

FREE
PLEASE TAKE A COPY



March/April 2007
ISSUE ONE

DRINKER'S ALEMANAC

incorporating *What's Doing*
covering Manchester, Salford and Beyond

IN THIS ISSUE

Editorial 3

A quick word from the editor

Your Views 5

Write in and let us know!

Spotlight on Two Cities 6

News from Manchester & Salford

Pub & Brewery News 7

Keep up to date

Tribute 9

In memory of Neil Richardson

Join CAMRA 10

It couldn't be easier....

Sun Brewery 12

Blast from the Past

Forthcoming Events 14

Whats going on in your area

BEER IN ARNDALE PARADISE See page 5



Produced by the North Manchester Branch of the CAMPAIGN for Real Ale
www.camra.org.uk/nmanchester

Crown & Anchor

*Traditional pub serving a
selection of well-kept
cask ales*

Good homecooked food
served from 12 - 2pm

Bed & Breakfast available

41 Hilton Street, Manchester

Tel: 0161 2281142



Greenfield
Real Ale
Brewery

Greenfield Real Ale Brewery

Waterside Mills, Greenfield,
Saddleworth OL3 7NH

Tel. 01457 879789

info@greenfieldrealale.co.uk

www.greenfieldrealale.co.uk

*Real Ale's brewed with fine natural
ingredients and Greenfield Spring Water
for extra taste !!*

Come and find our '**Secret Brewery**' on the edge
of the Peak District National Park. Whilst here
enjoy a Brewery Tour followed by a few pints
(or more) at our Brewery Bar.

Our beers are often named after local
source's such as :-

Dobcross Bitter 4.2 abv -

an attractive 18th century stone Village.

Delph Donkey 4.1 abv -

the last Steam Train from Delph in 1955.

Castleshaw 4.2 abv -

location of a nearby ruined Roman Fort.

Spot On Stocks



Stocktaking, A Complete Stock Report
Produced on Site

Bookkeeping/Accounts/VAT Returns
Full Professional Payroll Services

Over 30 years experience in the trade

We offer a quality service at competitive prices

First appointment free (PLUS A FREE GIFT)

For full details contact Peter Mansell

**FREE PAYROLL WITH
GOVERNMENT GRANT**

Telephone: 0161 339 9283

Mobile: 07785 583844

www.spoton.gbr.cc

Email: peter@spoton.gbr.cc

Member Institute of Licenced
Trade Stock Auditors



New Brewery, Aston Park, Souldon
Road, WEM, Shropshire SY4 5SD

**Nutcracker
Gold Medal Winner
GBBF 2005**

Strong Bitter

Quality Ales Brewed the Old
Fashioned Way

With 14 Permanent Beers

Plus Monthly Specials

Tel/Fax: 01939 232432

email: info@hanbyales.co.uk

www.hanbyales.co.uk

DRINKER'S ALEMANAC

FROM THE EDITOR'S CHAIR

Hello and welcome to our first edition of a new regular magazine covering the CAMRA Branch of North Manchester and beyond. As stated on the cover, we hope to continue where *What's Doing* left off, incorporating some of the things that made it unique. This can only be possible by having a dedicated team of enthusiastic willing workers and regular contributors, all volunteers I may add, to help the CAMRA cause.

Since the sudden and unexpected loss of *What's Doing* and its editor, Neil Richardson, quite a lot has happened over the few months we've been away. The demise of some of our pubs continues on apace and other new ventures have come on line; the Northern Quarter is undergoing constant change - so fast, in fact, that we can hardly keep up with it. Other areas of our two cities too - exciting times are ahead. Let's hope we can keep bringing our readers up to date reports on all that's happening around the region.

Therefore, I dedicate this issue to the memory of Neil Richardson (see tribute on page 8), a man who put his heart and soul into local history and the continued production of *What's Doing*. He is watching over us now, just to make sure we try and do things properly. *What's Doing* ran to a colossal 369 issues, let's hope we can do the same and run on even longer.

Lastly, I would also like to thank John Clarke, editor of South Manchester & Stockport's *Opening Times*, for his continued support during those last few months, for keeping a North Manchester CAMRA column going during our absence.

Contacts

Editor: Steve Smith.

Email: Manpubs2006@aol.com.

Assistant Editors: Dave Hallows.

Email: davehallows2002@yahoo.co.uk.

Ian Kenny Email: ipkenny@supanet.com.

Your views and any correspondence should be sent to the editorial address: c/o 3 Routledge Walk, Harpurhey, Manchester M9 4DT or to the Email addresses above.

Subscription Rates

£2.00 for mailing of six issues should be sent to Roger Hall, 123 Hill Lane, Blackley, Manchester M9 2DW. Please make cheques payable to CAMRA North Manchester.

Contributors to this issue: Alan Gall, Roger Hall, Dave Hallows, Andy Jenkinson, Mark McConachie, Stewart Revell, Steve Smith, Roger Wood, Neil Worthington.

Photographic Credits: Peter Butler, Dave Hallows, Steve Smith.

Trading Standards

Should you wish to make a complaint concerning certain aspects of service regarding the pub, firstly it is better to take it up with the management of the establishment concerned. If however the matter cannot be resolved you may wish to contact your local Trading Standards office.

These are located as follows:

Manchester City Council -

1 Hammerstone Road, Gorton, Manchester M18 8EQ. Tel: 0161 234 1555. Fax: 0161 957 8379. Email: tradingstandards@manchester.gov.uk.

<http://tradingstandards.gov.uk/manchester>.

Salford City Council -

Turnpike House, 631 Eccles New Road, Salford M5 2SH. Tel: 0161 925 1346. Fax: 0161 925 1199. Email: ron.pennington@salford.gov.uk.

Disclaimer

Readers are reminded that the editorial team or the Campaign for Real Ale may not necessarily share the views expressed by the contributors. Contributions are always gratefully received but may be edited without altering the meaning and certain grammatical errors, if spotted in time, may be corrected. As with any free publication, space is at a premium and publication can not always be guaranteed. All articles are © Campaign for Real Ale and may be reproduced if source acknowledged.

WITCH BEER?



Witch Beer?
East Lancashire
CAMRA, 48pp, £2.00.

For about the price of a pint this handy little guide is the first in this area for over two decades and well worth the wait. It features those real ale pubs which are worthy of a full entry in CAMRA's national Good Beer Guide, so its quite selective is this one.

It does what it says on the cover though, "A guide to the best real ale pubs in East Lancashire" and each pub is given in full detail and there are some neat photographs. The slimline style fits easily into the pocket with each entry in alphabetical order; firstly by local authority areas covering Blackburn with Darwen, Burnley, Hyndburn, Pendle, Ribble Valley and Rossendale, then by town and village. Although the places are not described, there is enough information here to whet the imbiber's appetite - pub name, address, opening times and telephone number; beers available and description of the pub; and standard Good Beer Guide symbols to denote facilities offered.

Featured on the full colour cover is a view of local landmark Pendle Hill, taken from the Shooters Arms, Nelson. Inside, the introductory pages concentrate on the branch details and how to use the guide, whilst towards the rear is a list of clubs featuring real ale in the area and a description of the breweries. It also includes a pub report form for any changes, but as I found with my editorial experiences, these are often little used if at all rarely completed, so the page could have been used for something more useful.

I picked up my copy at the recent Pendle Beer Festival in Colne, a snippet at the price and a worthwhile guide to the adjoining areas of Greater Manchester.

Steve Smith

Unicorn

26 Church Street Manchester
0161 8348854

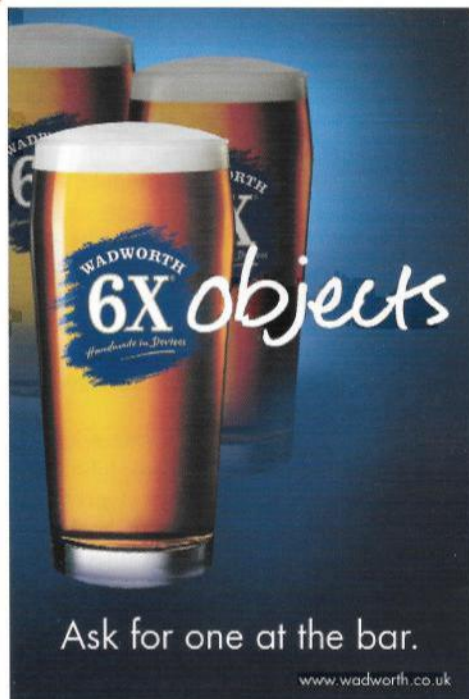
Traditional English Pub

3 Real Ales Available

Also Serving Traditional
Lagers and Beer

Grade II Listed Victorian
Building

*Liz and Staff Offer Everyone
a Warm Welcome*



BEER IN ARNDALE PARADISE



Last September saw the opening of the most unusual bar in Manchester - the Paradise Brewery Bar on the ground floor of the swish new wing of the Arndale Centre in the city. In Europe a bar like this is commonplace, in bus stations and motorway services, but here it is novel. Paradise brewery was originally on the site of Wrenbury Station in the wilds of leafy Cheshire, owned by John Wood, who owns the bar. The story goes that he found out that the whole of the Arndale Centre had a license to sell alcohol and the rest is history!

There are usually two beers on handpump/stillage. On my last visit there was Paradise Arndale Ale (3.7% abv) and Nantwich Ale (5.0% abv). The brewery itself now brews one day a week at 3 Rivers brewery in Reddish, Stockport. But there are plans for a move to North Wales some time in the future. Also available is Lowenbrau Pils Lager in bottle, as well as a wide selection of Real Ale in bottles from Paradise. Now and then, there's a guest brew. In the past there have been 3 Rivers, Thornbridge and Shaws.

The bar faces the English Lounge on High Street and is surrounded by various take away food outlets, selling anything as diverse as sushi to sausage barmes. Glasses are good quality plastic glasses, due to Council rules. There are stools and high tables for customers to use opposite the bar. As it is a shopping centre the opening hours reflect this. Monday to Saturday is 11am (ish) until 6pm, and on Sundays 11am (ish) until 5pm. Well worth a visit.

Dave Hallows

YOUR VIEWS

Sir,

We just made it back to our home on Friday 26th January, 2007 after visiting the National Winter Ales Festival in Manchester. We are almost completely over jet lag and the laundry is almost done. I guess that signals the true end of the vacation. We had a great time at the festival. We met and talked to a lot of friendly and informative people ...both volunteers and attendees. And of course, the beer was fabulous!

We also found the Marble Arch pub, stopping there for a couple of good pints as well.

Cheers from two devoted beer enthusiasts.

John and Kathy Merkwon, Roanoke, Virginia, USA.

Sir,

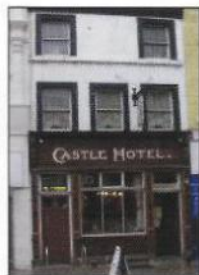
Although I live in Cambridge which has an above average number of excellent free houses, I visit the Greater Manchester area on a regular basis, to visit their Good Beer Guide pubs.

I sense some feeling in your local CAMRA circles that the real ale scene is on a slight decline, as a number of the old stalwarts in the Northern Quarter and parts of Salford change hands. My own experience is much more positive. Manchester seemingly has a better spread and variety of good real ale hostelry than anywhere else in Britain and a better public transport system to access them (although I prefer walking between them).

I really enjoy the contrast between the many excellent newer bars around the Oxford Road area and the Robinson's estate in Stockport town centre. East Manchester suffers in comparison, but the Good Beer Guide entries for the Gorton and Openshaw area are both superb. Pub interiors are generally less 'spoiled' than down south and the beer prices and high volumes mean good quality. It is a shame you don't see the 3 Rivers beers on sale more widely though. My only criticism is that it would be really helpful if your branches could indicate whether or not children are welcomed - I believe in giving mine early exposure to the joys of the public house.

Martin Taylor, Cambridge.

SPOTLIGHT ON TWO CITIES



News from the Castle

A mosaic portrait of Kath Smethurst, the licensee of the Castle Hotel, Oldham Street, Manchester who sadly died last August (see tribute on page 14) has been completed by local artist and pub regular Mark Kennedy. Incorporating some

of Kath's ashes in the grout, it is a fitting memorial to one of the Northern Quarter's institutions.

The pub may feature a further two handpumps in the near future - one for Robinson's Hartleys XB and the other for their seasonal beer.

Regular live music now features on a regular basis and are labelled DIY Hardcore Shows. Featuring up and coming bands, the shows are free but donations are asked for the upkeep of the groups' expenses and there plans to broadcast these shows live on t'internet.

Bazens'

The Salford Micro, based in the Cliff district of Higher Broughton has a new theme of beers for 2007 to celebrate Salford's history. All beers are tawny in colour and of an abv of 4.3%, but made with different hops. First out was Dirty Old Town - a tribute to famous Salford folk singer and writer of the song of the same name, Ewan MacColl.

Next up is Salford's Star, renamed from the original of Doctors Papers, after the actor Christopher Eccleston who played Doctor Who in the BBC television series was thought to object to the beer and his picture on the original pumpclip. Brews for the rest of the year, epitomising Salford and its events will be: March - Sparked Out (Agecroft Power Station); April - A River Runs Through It (Salford Metropolitan Borough); May - Winning Post (Castle Irwell Racecourse); June - Salford's Hero (Mark Addy); July - Bazens' Birth (Birth of the Brewery); August - Park Life (Peel Park); September - High Water (1946 Floods); October - Royal Ale (Lowry Arts Centre); November - Picture Perfect (L S Lowry); December - Broken Record (L S Lowry's The Match).

A recent beer festival had their Trust 5 beer on stillage, quite a tasty mid brown brew, but this could have been a rebadge.

Boggart Bulletin

Moston's mighty micro is the Boggart Hole Clough Brewery. Founded by Mark Dade, its' many brews are easily spotted by the wooden beer badges and burnt carved out writing thereon. Over the year's Boggart has had a growing reputation for bringing out many special 'one-off' beers, as well as its regular and seasonal brews.

Recently out was Wobbley Parrot (4.6% abv) - a golden beer with a mellow bitter complementary and light fruit aroma. Also recently spotted were Moonlight (5.0% abv), pale, fruity and hoppy. Out in February was Cowhead Bitter (4.9% abv), again pale in colour.

Next up is a new dark beer as yet unnamed. For more information about Boggart and its beers log on to: www.boggart-brewery.co.uk.

Dave Hallows

Holts Corner

Joseph Holt's are considering making a number of their tied estate pubs into tenancies and it is believed that about eight are involved. At the time of going to press, the names of the Holt's pubs that maybe converted into tenancies are not known; the brewery is still 'fine tuning' the selected houses. One of them will most likely be the Eagle on Collier Street, where a front window was recently damaged and subsequently repaired. I hear there has also been a change of licensee there in recent weeks.

There is now in place, a calendar time table, showing the Seasonal Beers to be available during 2007 and the selected Joseph Holt pubs that the beer will be available in. 40 Pubs have been selected but three of these are undergoing refurbishment (indicated thus *), so are not included until finished.

The pubs involved are as follows:-

Abbey, Angel, Ape & Apple, Atherton Arms, Black Dog, Blue Bell (Blackford Bridge), Blue Bell (Moston), Brooklyn, Cart & Horses, Chapel House, Cheadle Hulme, Cleveland, Cock O'Budworth, Crown Hotel, Crown & Anchor, Derby Brewery Arms, Doffcocker, Duke Of Wellington, Eagle & Child, Edington Arms, Friendship, Globe, Griffin Hotel (Cheadle),

Griffin Hotel (Heaton Mersey), Hayfield*, Legh Arms, Lord Nelson, Melville, Morning Star, Norfolk*, Old Monkey, Park Hotel, Queens Hotel, Railway, Richmond*, Roebuck Hotel, Welcome Inn, Wellington Inn, Woodthorpe Hotel, Wyldes. So, for March the seasonal beer will be Thunder Holt at 4.5% abv, followed by, in April, Fifth Sense at 5.0% abv. Later in the year, Nuts & Holts is due a come-back.

Stewart Revell (stewart.revell@gmail.com)

From the Marble Vaults

Nothing much to report here for the moment. Things are going quite steady, as no seasonal beers are in the pipeline. However, there is a change to the bottle version of Ginger – a special one off 6.0% abv brew. Another new bottled beer is added to the range too; Stronge Tawny (5.7% abv) will be available soon. Look out for a specially brewed St Patrick's Day stout. This will be a dry hopped version, minus the port wine at 4.3%

Steve Smith

Presentation Time!

The Lamb Hotel in Eccles has been in CAMRA's

Good Beer Guide for the last 15 years continuously and will have a plaque presented to commemorate this. Also, the White Swan in Swinton has been in for the last 14 years. We encourage and invite people along to these two events; please see the branch diary for details.

Holt's on th' Heights

Irlams o'th' Height on Bolton Road has four pubs; three of which are real ale and all Holt's houses in the space of no more than 100 metres! The Wagon & Horses sells just the Bitter, while at the Wellington, there were an amazing three beers on the last visit. Joining the Bitter, there was the hand-pumped Mild and seasonal Humdinger - a honey beer. A few steps away there's the Red Lion. Whilst just serving the Bitter, there was a promise of the real handpumped Mild 'maybe tomorrow'.

So we plan to send round one of our number, a reformed keg drinker, sporting a sweat shirt with the logos printed on it of 'Keg Dept Chuggers of 1908 - The Keg Champions - Roll it out, tap it and kill it' to check it out!

AROUND THE REGION

Wigan Beer Festival

This popular event returns once again to the Robin Park Indoor Sports Centre on Loire Drive, which is about a fifteen minutes' walk from the rail stations, which is opposite the main JJB Stadium. Billed as the "2-007 - The Pie Who Loved Me", bordering on a James Bond caricature in the shape of a pie, it runs from Thursday, 22nd March until to Saturday, 24th March.

For its 20th year, this one will be bigger and better than ever before, and Wigan Branch is consequently asking for help from neighbouring branches. I have staffing forms etc., for anyone interested in working there. Contact Neil Worthington at neil.worthington@virgin.net.

Oldham Beer Festival

Secondly, another very popular event is the one held at the Queen Elizabeth Hall on West Street. This one takes place on Friday, 30th March and Saturday, 31st March. Now in its 21st year and

there are easy public transport connections as its opposite the bus station.

After a minor refurbishment, the Orange Tree, Old Market Street, Altrincham now has a policy of non-smoking throughout. See branch diary on page 17.

The Barn Owl, Warrington Lane, Agden Wharf, near Lymm has gained a fifth handpump. This Good Beer Guide listed establishment now has three guest beers to add to the regular range of Marston's Burton Bitter and Pedigree.

The Old Market Tavern is the Trafford & Hulme Branch Pub of the Season for spring 2007. This pub faced a bleak future in March last year when the tenant left, owing to financial difficulties. It closed, only to reopen a few weeks after in April. Entrepreneur John Glover renegotiated the lease with Punch Taverns and since then, it has never looked back. It now boasts up to 11 real ales on offer from a variety of breweries. Regular beers are Caledonian Deuchars IPA and three from the Bank Top stable.

Continued Overleaf

On Wednesday night there is a quiz which includes a free buffet and on Saturday and Sunday nights, a live heavy rock/blues music session, which has as its audience a predominantly mature clientele.

Presentation takes place on Thursday, 19th April at 8.00pm.

Stockport & Manchester Mild Challenge 2007

Following the great success of last year's Stockport & Manchester Mild Challenge, Stockport & South Manchester CAMRA are once again organising an extended trail of pubs to promote the drinking of cask conditioned mild.

The promotion is again being sponsored by the Stockport Express and will run from 31st March to 6th May 2007. Those who wish to participate in the challenge can obtain a Mild Challenge card either from those pubs taking part or from the inserts in the local CAMRA magazine Opening Times.

Each card will list all participating pubs and have room for 15 stamps. When a customer buys either a half or pint of cask conditioned mild, then the card will be stamped. Those submitting completed cards will get free entry to Stockport Beer Festival and also be entered into a grand prize draw to be drawn at the festival. There will also be a special Mild Challenge polo shirt for those covering 15 pubs in 15 different parts of the Challenge area, and an extra special embroidered polo shirt for those covering all of the pubs in the Challenge.

Here's an early mention of an event being organised by the Cheshire Branches of CAMRA. It's on Saturday, 2nd June, and it's a 'Meet CAMRA' event followed by an 'All-Cheshire Social' involving a barbecue and bottled beer tasting event. This takes place at the Holly Tree Farm, Tabley, near Knutsford (not to be confused with the Holly Bush pub on the A49). Again, help from neighbouring branches is requested.

Finally, there's news of a free vintage bus service touring real ale pubs around St Helens. 'The North West Museum of Road Transport' in St Helens was approached with an idea by the proprietor of one of the areas most popular pubs, the Red Cat at Crank. The proposition was to organise Saturday afternoon excursions using

vintage buses to local pubs specialising in great food and traditional ales. The Red Cat has earned an excellent reputation for its home cooked dishes and real ales. It was therefore the obvious first stop in an afternoon tour taking in the Colliers Arms at Kings Moss and the Stanley Gate at Bickerstaffe. The tours start from the North West Museum of Road Transport in Hall Street, St Helens, departing at noon on Saturdays. For further information, please contact Gary Maddock, Tourism development Manager, St Helens Council. Telephone: 07747765273. Email: garymaddock@sthelens.gov.uk.

The town of St Helens has undergone a dramatic transformation in recent years to become a growing regional location of choice for businesses, residents and visitors alike. The Borough's spirit of innovation and its prime position at the heart of the North West's motorway network, midway between the vibrant cities of Liverpool and Manchester, continue to be major factors in its ongoing success.

St Helens is over 50% rural, one of only seven UK locations where a new work of "Big Art" will be developed in association with Channel 4, cited by the North West Development Agency as an exemplar for its approach to tourism development and was the only area in the North West to be awarded £13.4 million Round 1 Local Enterprise Growth Initiative funding; just a few of the impressive facts that may challenge people's preconceptions and make St Helens worth a closer look.

The Council's commitment to service excellence is reflected in its maximum 4* rating, making St Helens one of the top Local Authorities in the country. The dynamic and forward thinking Economic Development Team - comprising integrated Business Location, Funding & Economic Intelligence, Tourism Development, Town Centre Management, & Marketing functions - is responsible for developing and delivering key elements of the ambitious regeneration and growth agenda for "St Helens plc" and works very closely with a variety of public and private sector partners to achieve these aims.



NEIL RICHARDSON - WHAT'S DOING EDITOR

Neil Richardson, who died on 21st August 2006, aged 58, after a short illness, will best be remembered in CAMRA circles for his editorship of *What's Doing* and, more widely, for his

contribution to the local history community.

Neil edited *What's Doing* for over thirty years. Under his leadership the magazine developed a quirky and independent style which reflected Neil's sense of humour and keen eye for the ridiculous. Neil first attended CAMRA branch meetings in early 1976 at the Lord Nelson in Ringley. At the time he was a postgraduate research student at Salford University. When he became editor he used the Students' Union facilities to print *What's Doing*. Gradually Neil's interest in pubs and local history became more important than Physics and in the 1980s he set up his own printing and publishing company, which focussed on local history, particularly pubs and breweries.

Neil's ventures into local history had begun with his series of publications on Salford Pubs. This encouraged others to write their own local histories and soon the content spread beyond pubs and breweries to include a wide range of topics from cinemas, schools and canals to regiments, industry and sport. In addition to histories of particular districts and institutions, Neil reprinted many ancient maps and directories which were a boon to local historians. His publications filled a real niche in the local publications scene. The booklets, produced in both A4 and A5 formats, were well written, illustrated with photographs, maps and contemporary newspaper cuttings and eminently affordable.

The publications also encouraged those who might not otherwise have gone into print to write, thus ensuring that rich personal memories were more widely shared. This was not vanity publishing. Neil provided his authors with

encouragement, sought out suitable illustrations from his vast archive and created a viable business from the focus he had achieved. Print runs were in the hundreds rather than thousands and authors received royalties from their books once around 500 copies had been sold. There was a universal admiration for Neil's dedication, skill and scholarship which has enriched the lives of many, authors and readers alike.

Neil is survived by his wife Sue and his mother, both of whom continue to live in Ringley. Sue hopes to make the current list of publications available to readers. This may involve some reprinting on the old equipment which Neil nursed successfully for many years. There were many people at Neil's funeral from both his CAMRA and local history friends. Many tributes have been received from those who knew him well and from those who just enjoyed the fruits of his professional work. He will without a doubt be sorely missed.

Roger Hall

Owl Brewing

**Fine Craft
Ales and
Porter**



Visitors welcome at:

Unit 41, Acorn Centre, Barry St., Oldham

Our spring range of ales includes:

- Snowbird* - 4.1% V.Hoppy/V.Pale
- Dawnbreaker* - 4.4% Hoppy & Golden
- Eventide* - 4.4% Hoppy Amber
- Russett Extra* - 4.5% Brown Ale
- OB Bitter* - 4.2% Session Bitter

Try a mixed case of bottles, or buy a
3-bottle special gift pack!

07889-631366

For Cask/Off Licence sales

It takes all sorts to campaign for real ale

Join CAMRA today...

Complete the Direct Debit form below and you will receive three months membership free and a fantastic discount on your membership subscription. Alternatively you can send a cheque payable to CAMRA Ltd with your completed form, visit www.camra.org.uk or call 01727 867201. All forms should be addressed to Membership Secretary, CAMRA, 230 Hatfield Road, St Albans, AL1 4LW.

Your Details

Title Surname

Forename(s)

Date of Birth (dd/mm/yyyy)

Address

..... Postcode

Email address

Tel No (s)

Partner's Details (if Joint Membership)

Title Surname

Forename(s)

Date of Birth (dd/mm/yyyy)



Save money by
paying by
Direct Debit!

Please state which CAMRA newsletter you found this form in?

	Direct Debit	Non DD
Single Membership (UK & EU)	£20 <input type="checkbox"/>	£22 <input type="checkbox"/>
Joint Membership (Partner at the same address)	£25 <input type="checkbox"/>	£27 <input type="checkbox"/>

For concessionary rates please visit www.camra.org.uk or call 01727 867201.

I wish to join the Campaign for Real Ale, and agree to abide by the Memorandum and Articles of Association.

I enclose a cheque for

Signed Date

Applications will be processed within 21 days



Instruction to your Bank or Building Society to pay by Direct Debit

Please fill in the form and send to: Campaign for Real Ale Ltd, 230 Hatfield Road, St Albans, Herts AL1 4LW



This Guarantee should be detached and retained by the payer.

The Direct Debit Guarantee

- This Guarantee is offered by all Banks and Building Societies that take part in the Direct Debit Scheme. The efficiency and security of the Scheme is monitored and protected by your own Bank or Building Society.
- If the amounts to be paid on the payment dates change CAMRA will notify you 10 working days in advance of your account being debited or as otherwise agreed.
- If an error is made by CAMRA or your Bank or Building Society, you are guaranteed a full and immediate refund from your branch of the amount paid.
- You can cancel a Direct Debit at any time by writing to your Bank or Building Society. Please also send a copy of your letter to us.

detached and retained on action

Name and full postal address of your Bank or Building Society

To the Manager Bank or Building Society

Address

Postcode

Name(s) of Account Holder (s)

Bank or Building Society Account Number

Branch Sort Code

Reference Number

Originator's Identification Number

9 2 6 1 2 9

FOR CAMRA OFFICIAL USE ONLY

This is not part of the instruction to your Bank or Building Society

Membership Number

Name

Postcode

Instructions to your Bank or Building Society

Please pay CAMRA Direct Debits from the account detailed on this instruction subject to the safeguards assured by the Direct Debit Guarantee. I understand that this instruction may remain with CAMRA and, if so will be passed electronically to my Bank/Building Society.

Signature(s)

Date

Banks and Building Societies may not accept Direct Debit Instructions for some types of accounts.

New Oxford

A warm welcome awaits you

1 Guest Beer - New Oxford Bitter
+ 5 guest ales

Home cooked food served
Mon-Sat 11-6pm

3 Belgian beers on draught at all times

New world bottled beer menu

Quiz night Tuesday

Good Beer Guide 2008

11 Bexley Square, (just off Chapel Street),
Salford Manchester

Tel: 0161 832 7082



Purveyors of cask
& bottled beers

**Only licensed bar in
Arndale Centre, Manchester**

Open 11 - 6pm

Come and visit us!

BEER MASTERS

A real ale tasting competition

Ever tried to impress your mates by your beer tasting skills in a premier pub or at a CAMRA beer festival? Now is the chance for the real buff or wannabe to put this to the ultimate test. Beer Masters is a real ale tasting knockout competition under the flag of CAMRA Greater Manchester Region and hosted at CAMRA Oldham Beer Festival, Queen Elizabeth Hall, Oldham on Saturday, 31st March 2007 commencing at 12.30pm for a 1.00pm start.

There'll be three knockout rounds where entrants will fill in a beer tasting sheet to score on flavour, finish, body and aroma. Identify the temperature, clarity, head, carbonation, and mouth feel and beer style. Then come up with your own tasting notes giving colour, flavour, aftertaste, and aroma, commenting on character and/or whether the beer is distinctive, including any negative flavours. Contestants need to book in advance. Incentives in this prestige event is that each who enter will get a FREE half of beer in a clean glass in each round they get through to; water biscuits will be provided to cleanse the palate and a CAMRA plaque goes to the winner with prizes.

The object is to impress a panel of expert judges on your beer tasting skills. On the panel will be brewers from Bazens, Hyde's, Marble and Phoenix breweries with CAMRA Chair.

Contestants have to be prepared to drink most beer colours and styles for a chance to get into the final round when each of the last four will, in turn, be interviewed by the panel about the beer being tasted.

The one who impresses the most earns the title of CAMRA Greater Manchester Region's 1st Beer Master 2007! The event is sheduled to finish around 3.00pm and is open to all who book, including non-members. Contact: Dave Hallows (Event Organiser). Write to: 42 Broomfield Drive, Cheetham Hill, Manchester M8 9EE.

Tel: 07983944992.

Email: davehallows2002@yahoo.co.uk.

CHARLES MOTTRAM AND THE SUN BREWERY, SALFORD



The Coomassie Hotel

In 1834, and for almost a hundred and forty years afterwards, the Sun Brewery looked out from Ford Lane at the changing face of Salford. At first there were still open fields to be seen northwards in the direction of the River Irwell. The area around the brewery, then known as Richmond Hill, started to develop rapidly as buildings began filling all the available space. Next to the brewery appeared a school and on the other side of Ford Lane St. Matthias' Church was consecrated, both in 1842.

The first recorded user of the brewery was John Collins who worked in partnership with George and Edward Gripper as 'Collins & Gripper' around 1838-1841. Before and after these dates John Collins operated under his own name, finally going bankrupt in 1845. A succession of occupants followed with varying degrees of success. Even with the large demand for beer, there was so much competition in the region that many businesses failed. One thing we know about the brewery is that when it became vacant in 1846 the capacity of the plant was 100 barrels per week, assuming that the advertisements of the day were not exaggerating the figure.

Less than 300 yards away from the Sun stood the long established St. Stephen's Street Brewery run by R. E. Mottram. It seems unlikely that one of the Mottrams would set up in competition with

his own family but this is exactly what happened when Charles Mottram moved into the Sun Brewery. Support for the idea of a rift comes from the fact that in the early 1870s Charles lived in near-by lodgings rather than his father's house. Yet Charles was allowed to draw large sums of money against his future inheritance, although



Leamington Inn

under the terms of Richard Elliott Mottram's Will he was obliged to pay interest on anything he borrowed. Despite the availability of this substantial funding, Charles was not ultimately successful in his business dealings.

Charles was born in 1845, the son of Richard Elliott Mottram and Maria Mottram. By the age of 16 he had already started to follow in the footsteps of his father as a brewer. Richard represented the third generation of Mottrams at the St. Stephen's Street Brewery so brewing was definitely 'in the blood'. Not long after his 21st birthday, Charles formed a partnership with William Sidgwick and began spending his temporary wealth on public houses and other necessities of the trade. The partnership with Sidgwick lasted until 1869, after which time the business continued under Charles alone. As the 1870s drew to a close the brewery ran into financial problems.

Charles filed a petition for liquidation of the business on 26th January 1880 but was able to continue earning a wage by managing the brewery for the Trustees of his estate. There were even hopes that his business could be saved. To do

this, he proposed to form a partnership with one Henry Walker. Each would need to find half of the £10,350 price tag that the Trustees had fixed for the transaction, less a £500 deposit to be paid in advance. Charles was unable to pay his share of the deposit so Henry Walker provided the full amount. What hope did Charles have of raising the money? We may never know. He had to admit defeat and wrote to Henry Walker on 10th February 1881:

'As I find I am unable to provide the necessary funds for completing our agreement with the trustees of my estate, I authorize and request you to complete it on your own account and apart from me, and I surrender to you any interest I might have under this agreement. I hereby request the trustees to convey and assure all the property in that agreement to you alone, on your paying the balance of the purchase money.'

Ten thousand pounds was very serious money in 1881. Nevertheless, the Trustees were paid and Henry Walker became a brewer. If he wasn't originally a wealthy man then he had certainly married into money. His bride in 1856 was Therese Eleonora Susanna Rotherham, daughter of a rich landowner. Henry lived at the Rotherham family seat, Mosbrough Hall near Chesterfield.

Charles Mottram was not quite finished with his brewing career. After being discharged as a bankrupt on 24th November 1880, he was able to start again. In June of 1881 he sent a circular to his former customers of the Sun Brewery:

'I beg to inform you that I have purchased the goodwill of the brewery hitherto carried on by Mrs. E. A. Renshaw at the above address [Swan Brewery, Pryme Street, Hulme]. It is my intention to supply my customers with ales and porters of the finest quality, and I trust, by strict attention to their requirements, to merit and receive a continuance of their support.'

Henry Walker didn't take this turn of events too well and attempted to obtain an injunction preventing Charles from soliciting the Sun Brewery customers.

The action was not successful and neither was an appeal that came before the courts in 1881. All the judges took the view that since Charles had not parted with his original business willingly, he had every right to solicit custom. The new enterprise at the Swan Brewery didn't carry on

much longer after these events. Proceedings for liquidation were underway by March 1882.

Henry Walker's business continued for a considerably longer time. Trading as Walker & Homfrays Ltd, the brewery became one of Salford's largest. It finally merged with Wilsons Brewery Ltd in 1949 to form Wilson & Walker Breweries Ltd. This soon reverted back to Wilsons Brewery Ltd. The Sun Brewery was not used much after about 1890 when Walker & Homfrays moved their HQ to the Woodside Brewery, off Eccles New Road. The Sun Brewery buildings themselves remained until 1973, demolished to make way for extensions to St. Matthias' School.

Thanks to: Sue Richardson for pub pictures and Richard Mottram for information.

Details of the pubs are from Salford Pubs by Neil Richardson (2003)

Much of the research was done at Salford Local History Library, thanks Tim.

Alan Gall

Pubs controlled by Charles Mottram at the Sun Brewery

Cross Keys, 91 Broughton Road, Salford.

Pulled down when Blackfriars Road was constructed. The licence was transferred to the Florin Street Beer House in 1874.

Duchess of Edinburgh, 347 Liverpool Street, Salford. *Passed to Walker & Homfrays and closed in about 1960.*

Florin Street Beer House, 53 Florin Street, Salford. *Became the Coomassie Hotel, which closed under a CPU in 1968.*

Leamington Inn, 11 Taylorson Street, Salford. *Passed to Walker & Homfrays. Closed in 1969.*

Mechanics Arms, Wilburn Street, Salford. *The original building was pulled down to make way for a new section of road between Wilburn Street and Ordsall Lane. The beer house licence was transferred to two of the remaining houses on the street which Charles Mottram replaced with a new building a few years later. It was destroyed in the 1940 blitz.*

Wigan Arms, 18 Sidney Street, Salford. *Passed to Groves & Whitnall. Closed about 1960.*

WHERE WE GO AND WHAT WE DO THE BRANCH DIARY

North Manchester

MARCH

Wed 7: Peel Green and Patricroft Crawl - Grapes, Liverpool Road, 7.30pm, Stanley Arms, Liverpool Road, 8.30pm, Queens Arms, Green Lane, 9.30pm.

Wed 14: Good Beer Guide Award - White Swan, Worsley Road, Swinton, 8.00pm. Buses 12, 26.

Wed 21: Branch Meeting & AGM - New Oxford, Bexley Square, Salford, 8.00pm.

Wed 28: Boothstown Survey - Greyhound, Victoria Street, 8.00pm, Royal Oak, Leigh Road, 9.00pm. Buses 26, 33.

APRIL

Wed 4: Brewery Visit - Shaws, Old Stables, Park Road, Dukinfield, 7.30pm. The cost will be £3.00 per head and the maximum allowed is 15 people. To book email: philip.booton@britishcouncil.org. Train to Ashton then Bus 330. Alight at Wharf Street and walk onto Park Road. The brewery is situated about mid way along.

Wed 11: Good Beer Guide Award - Lamb Hotel, Regent Street, Eccles, 8.00pm.

Wed 18: Branch Meeting - Hare & Hounds, Shudehill, Manchester, 8.00pm.

Wed 25: Manchester City Centre Crawl - Sinclair's Oyster Bar, Cathedral Gates, 7.30pm, Mr Thomas's Chop House, Corporation Street, 8.30pm, Sam's Chop House, Back Pool Fold, 9.30pm.

MAY

Wed 2: Blackley Crawl - Fox Inn, Old Market Street, 8.00pm, Ye Golden Lion, Old Market Street, 8.00pm.

Branch Contact: Dave Hallows. Telephone: 07983944992. Email: davehallows2002@yahoo.co.uk.

Sat 12: National Mild Day Crawl - Start at Marble Arch, 12.00pm.

Branch Contact: John Ison.
Telephone: 0161 962 7976.

Trafford & Hulme

MARCH

Thu 1: Branch Meeting - Timperley Taverners Social Club, Park Road, Timperley, 8.00pm.

Thu 8: Manchester City Centre Survey - Mr Thomas's Chop House, Corporation Street, 8.00pm, Corbieres, Half Moon Street, 8.45pm, Ape and Apple, John Dalton Street, to finish.

Thu 22: Sale Moor Survey - Carters Arms, Northenden Road, 8.00pm, Legh Arms, Northenden Road, 9.00pm.

APRIL

Thu 5: Branch Meeting - Orange Tree, Old Market Place, Altrincham, 8.00pm.

Thu 19: Spring Pub of the Season Award - Old Market Tavern, Church Street, Altrincham, 8.00pm.

LOCAL BEER FESTIVALS AROUND THE REGIONS

(not necessarily endorsed by CAMRA)

MARCH

Thu 22 - Sat 24: 20th Wigan Beer Festival, Robin Park Sports Centre, Loire Drive, Wigan.

Thu 22 - Sat 24: Preston Beer Festival 2007, St. Walburge's Parish Centre, Weston Street, Preston.

Thu 22 - Sun 25: March Beer Weekend, The Black Horse, 72 Redearth Street, Darwen.

Fri 23 - Sat 24: Clarets Trust 3rd Burnley Beer Festival, Nelson House, Nelson Square, Burnley.

Fri 30 - Sat 31: 21st Oldham Beer Festival, Queen Elizabeth Hall, West Street, Oldham

APRIL

Thu 5 - Mon 9: Easter Beer Festival, The Bulls Head, 356 Warrington Road, Goose Green, Wigan.

Thu 26 - Sun 29: April Beer Weekend, The Black Horse, 72 Redearth Street, Darwen.

MAY

Thu 3 - Mon 7: 7th Great Harwood Beer Festival, Royal Hotel, Station Road, Great Harwood.

TRIBUTE TO KATH SMETHURST



Kath, at the tender age of 56, departed us on 27th August of last year. As licensee of the Castle Hotel in Oldham Street, Manchester she will be sadly missed.

Kath was born in the nearby town of Bury, spending much of her working life in the pub trade. She came by

her final role by way of the King, another of the Oldham Street public houses, where she worked behind the bar, moving across the road to the Castle in 1986, again working behind the bar until 1995. When the tenancy came up for grabs, she had no

A NEWER, NEW OXFORD

Imbibers from near and far are all raving about the New Oxford on Bexley Square, off Chapel Street in Salford, which has now well and truly put itself on the map for its range and quality of real ales. Its run by its former cellar man Tim Flynn and his partner Paulette Scanlon and they have enjoyed a highly successful festival of their own during the National Winter Ales back in January. On my last visit, there was Salford's own Bazens' special, The Doctors Orders, Coach House Dick Turpin and Abbeydale's Resolution, joining the regular 'house bitter' New Oxford Bitter brewed by Northern. On the Continental side there's Liefmans Cherry fruit beer with Maredous Blonde and Italian Porretti lager all on draught. There's a small but good selection of bottled beers and a few real ciders. These originate from Dranke Centrale from Altrincham, who hold continental beer tastings in the pub from time to time. And they are getting more and more popular due to the New Oxford's policy of keen prices!

Recently tastefully refurbished in mushroom and cream, there's a comfortable and airy L-shaped main room and central bar with back room for dining, giving a modern café bar feel to



this former Vaux house. The pub has access for all. A new menu has started, after a refit in the kitchen. Indeed, there are plans for new chrome seating and an awning for the smokers outside, altogether making the pub a more attractive frontage to entice the passing trade in. And that they are too - in their droves!

Dave Hallows

hesitation in taking the helm, building up an ebullient pub trade of a loyal band of locals and regular customers. She held this position until the very end, the pub going from strength to strength being well respected and treated with the utmost respect by all. As Robinson's only city centre outlet, she was forceful in demanding it sell all of the brewery's cask ale range. A regular entry in CAMRA's Good Beer Guide, she forged links with Czech Republic, visiting and having visitors from there several times.

A very moving speech, parts of which are quoted here, were read out at her funeral by her son Damien: "She means something different to each and every-one of us here today, and the many people that for various reasons were unable to make it here. She was, first and foremost, a wonderful mother, the best friend anyone could ever wish for, a great licensee,

and a truly grand woman. She was there for everyone, and even right up to the end she was doing her best to help us, choosing to go in the middle of a four day music festival, yet passing away on Sunday lunchtime, when she knew the pub would be quiet. "She never, at any point in her life, worried or thought about herself. Always it was other people that came first, and she showed so much love and affection to so many people, it's hard to believe that one woman was capable of so much. She was there for everyone she knew, at all times, day or night, no matter what, and that's what made her such a special person. Thank you, for loving me." She leaves a husband Ian, her aforementioned son Damien (who has now taken over as licensee of the pub) and three daughters Chantelle, Kirsty and Zoë. May she rest in peace.



*Derby Brewery, Empire Street,
Cheetham, Manchester M3 1JD*

*For those
who know Bitter.*

*Tel: 0161 834 3285
Fax: 0161 834 6458
www.joseph-holt.com*

