

FREE
PLEASE TAKE A COPY



MAY/JUNE 2007
ISSUE TWO

DRINKER'S ALEMANAC

incorporating *What's Doing*
covering Manchester, Salford and Beyond

IN THIS ISSUE

- Editorial** 3
A quick word from the editor
- Your Views** 5
Write in and let us know!
- Spotlight on Two Cities** 6
News from Manchester & Salford
- Pub & Brewery News** 6
Keep up to date
- The Hope Valley Line** 9
A pub crawl by train
- Join CAMRA** 10
It couldn't be easier....
- Forthcoming Events** 14
Whats going on in your area

CHANGES AT THE CRESCENT



The pub where Karl Marx discussed his Communist theory whilst enjoying a pint of his favourite tipple is now under threat. The Crescent, a long standing real ale free

house and premier real ale house in Salford is up for sale at around £700,000. The fears are that it could be lost to the developers.

Idy and Sal who currently look after the pub are leaving in July and the owners, Andy and Jo Davies, who are themselves close to retirement, are returning to manage the place. It is anticipated that the same bar staff will be kept on to run the place. Let us hope that this pub, marketed for sale as a 'development opportunity' is sold and maintained as a public house and a true free house at that.

A few of the more long standing CAMRA Members may remember Idy Philips who served at Ye Cracke up on Rice Street in Liverpool. From there Idy went on to run the Swan on Wood Street in the same city, as a Licensee, then later on to the Black Horse & Rainbow in Berry Street, whilst still in her mid 20's, between the late 1980's and early 1990's.

Continued Overleaf >



MANCHESTER FOOD & DRINK FESTIVAL 2006

Pub of the Year

73 Rochdale Road, Manchester M4

**MARBLE
BEERS**^{LTD}

www.marblebeers.com

DRINKER'S ALEMANAC

FROM THE EDITOR'S CHAIR

Firstly, I would like to thank all our contributors and advertisers for making the first issue possible. Also to the people who have heaped praise on our first effort. It proved to be a resounding success, flying out of the pubs almost as soon as it was deposited. Issue number two proves to be bigger and better; one or two people have expressed ideas of what they would like to see. We will try and accommodate their wishes although we do realise that we can't satisfy everybody's needs. Keep your contributions coming, as the more we get, the more chance there is of becoming a bigger and better publication, with perhaps even a more regular issue and reflecting some of the more current news items.

So what's happening within our local pub and brewery industry, then? To start with, the Boddingtons' brewery site has been demolished; a sad loss, but at least they've kept the chimney. Let us hope that they don't spoil the surroundings with mega tall buildings.

Long standing licensees Idy and Sal at the Crescent are finally giving up the reins in July, best wishes to them both, whatever they choose to do.

The smoking ban in public places came into effect in Wales on April 2 and has been received with mixed feelings. Don't forget, it's with us here in England on July 1.

CHANGES AT THE CRESCENT - CONTINUED

Idy then moved on to the Manchester real ale scene, and took over the Beer House on Angel Street, making it a wonderful drinking establishment along with her Italian partner, Sal. After a few years they moved again, taking over as tenants of the Crescent, which has featured for 20 continuous years in the Good Beer Guide, and took many of the Beer House's customers with them.

Last year Idy and Sal were married and have now decided to retire themselves. To mark their devotion and service there will be a presentation on Wednesday, 27th June.

Contacts

Editor: Steve Smith.

Email: Manpubs2006@aol.com.

Assistant Editors: Dave Hallows.

Email: davehallows2002@yahoo.co.uk.

Ian Kenny Email: ipkenny@supanet.com.

Your views and any correspondence should be sent to the editorial address: c/o 3 Routledge Walk, Harpurhey, Manchester M9 4DT or to the Email addresses above.

Copy date for July Issue: 15th June.

Publication date for Issue Three: 6th July

Subscription Rates

£2.00 for mailing of six issues should be sent to Roger Hall, 123 Hill Lane, Blackley, Manchester M9 6PW. Please make cheques payable to CAMRA North Manchester.

Contributors to this issue: Phil Booton, Pete Cash, Bill Collier, Dave Hallows. Andy Jenkinson, Beverley Rae, Stewart Revell, Steve Smith, Roger Wood

Photographic Credits: Dave Hallows, Stewart Revell, Steve Smith

Trading Standards

Should you wish to make a complaint concerning certain aspects of service regarding the pub, firstly it is better to take it up with the management of the establishment concerned. If however the matter cannot be resolved you may wish to contact your local Trading Standards office.

These are located as follows:

Manchester City Council -

1 Hammerstone Road, Gorton, Manchester M18 8EQ. Tel: 0161 234 1555. Fax: 0161 957 8379. Email: tradingstandards@manchester.gov.uk.

<http://tradingstandards.gov.uk/manchester>.

Salford City Council - Turnpike House, 631 Eccles New Road, Salford M5 2SH. Tel: 0161 925 1346. Fax: 0161 925 1199. Email: ron.pennington@salford.gov.uk.

Disclaimer

Readers are reminded that the editorial team or the Campaign for Real Ale may not necessarily share the views expressed by the contributors. Contributions are always gratefully received but may be edited without altering the meaning and certain grammatical errors, if spotted in time, may be corrected. As with any free publication, space is at a premium and publication can not always be guaranteed. All articles are © Campaign for Real Ale and may be reproduced if source acknowledged.



Spot On Stocks



Stocktaking, A Complete Stock Report
Produced on Site

Bookkeeping/Accounts/VAT Returns
Full Professional Payroll Services

Over 30 years experience in the trade
We offer a quality service at competitive prices
First appointment free (PLUS A FREE GIFT)
For full details contact Peter Mansell

FREE PAYROLL WITH GOVERNMENT GRANT

Telephone: 0161 339 9283

Mobile: 07785 583844

www.spoton.gbr.cc

Email: peter@spoton.gbr.cc

Member Institute of Licenced
Trade Stock Auditors



Purveyors of cask
& bottled beers

**Only licensed bar in
Arndale Centre, Manchester**

Open 11 - 6pm

Come and visit us!

New Oxford



A warm welcome awaits you

1 Guest Beer - New Oxford Bitter
+ 5 guest ales

Home cooked food served
Mon-Sat 11-6pm

3 Belgian beers on draught at all times
New world bottled beer menu

Quiz night Tuesday

www.thenewoxford.co.uk

11 Bexley Square, (just off Chapel Street),
Salford Manchester

Tel: 0161 832 7082

Crown & Anchor

*Traditional pub serving a
selection of well-kept
cask ales*

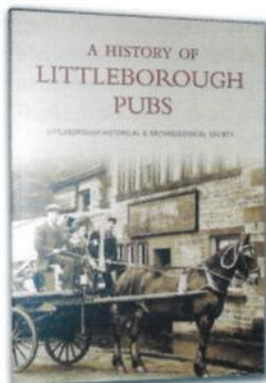
Good homecooked food
served from 12 - 2pm

Bed & Breakfast available

41 Hilton Street, Manchester

Tel: 0161 2281142

LOCAL GUIDES REVIEW



A History of Littleborough Pubs, by the Littleborough Historical & Archaeological Society, Tempus Publishing, 128pp, paperback, £12.99.

Following on from Alan Luke's former history of the area's pubs, published in 1983, to which this present book is dedicated, it is the most definitive yet on the hostelrys in and around the Littleborough area. Although many have long gone, there are still plenty that remain but of those which dispense cask ales nowadays may seem a little thin on the ground. Still, as with Tempus' other volumes in this series, the excellent black and white photographs are wide and varied, covering not just the town itself but the surrounding environs as well.

Featuring over 50 pubs, each is given in detail alphabetically and former names have been cross referenced. The descriptions begin with a full list of licensees up to the present day and then continue with a detailed history. The opening pages concentrate on an introduction which is then followed by an early history and general records. After this comes a detailed map showing the locations, covering the borough from places as remote as Shore and Rakewood (near Hollingworth Lake) to the more populated areas of the town itself and Smithy Bridge.

Some amusing little anecdotes are thrown in, such as the illustration of 'A Descriptive Account of the Company at the Moorcock Inn' and Bill O'Jacks' poem on 'The White Heawse'.

An excellent reference work, this book should appeal to any historian and pub-minded individual.



What you said about it - some comments on our recent first issue:

Congratulations on a very successful launch issue - Good to see a North Manchester magazine back in the pubs.

John Clarke, Edgeley, Stockport.

Well done for a fledgling publication.

Roger Hall, Blackley, Manchester.

New Drinker's Almanac looks good.

Paul J King, Stretford.

After the initial shock i.e., it's glossy! I've enjoyed reading it and glad that you've included a historical article. Congratulations.

Colin Marshall, Godalming, Surrey.

Thanks for including the obit and dedicating it to Neil's memory; it was very nice of you. A good job well done - it looks really good and I'm sure he'd approve. All the best.

Sue Richardson, Stoneclough, Manchester.

Great advert, thanks for the front page.

John Wood, Paradise Brewery, Cheshire.

A Fond Farewell

Sir,

The Brewery History Society Members would like to say farewell and thank you to Idy and Sal at the Crescent, for many years of looking after us and raising money for Manchester Children's Hospital. We have followed Idy from her Beer House days and always found a happy welcome.

They may be moving a little further away; but who knows? They may return. Many thanks from Alan, Tom Conner and Graham Lawley.

Alan T Gardner, Lancaster, Lancs.

SPOTLIGHT ON TWO CITIES

Bazens'

The new seasonal beer, A River Runs Through It, using Cascade hops, should be around by the time you read this. The big news though is about Mild. There will be a new mild which is a stronger version of the popular Black Pig (don't despair - it's continuing!) This will be called Mild Boar with an abv of 4.1% and around during the Stockport & Manchester Mild Challenge.

Despite some concerns, brewer Richard Bazen has stated that the Black Pig Mild has not been made paler and less flavoursome to make way for the newcomer. A simple case of being short on Chocolate Malt accounted for this, affecting some batches.

St George's Cross is another beer which has been out and about, no doubt brewed to celebrate the St George's Day Festival. Oh why can't we have a Bank Holiday in which to enjoy it! Winning Post should also make its appearance in early May too. A new cold store is being commissioned at the brewery and will be in use by early summer; this should reduce the incidence of returned beer

Boggart Bulletin

Deep in the North Manchester Branch of CAMRA resides Boggart Hole Clough Brewery in Moston. Brewer Mark Dade told us that the Easter special was Mad Hatter, a plain stout at 3.9% abv. Out next is Lightside at 4.1% abv, which is, not surprisingly, a light bitter. At times these beers can be found at the Bar Fringe on Swan Street and the Ashton Arms on Clegg Street in Oldham town centre. These specials join a long list of regular beers - Best Bitter, Dark Mild, Standard Pioneer (a session bitter), Angel Hill (a pale and very bitter pale ale), Boggart Brew (a ruby red bitter), Dark Side (a porter) and Sun Dial (a strong bitter).

Holt's Corner

The Crumpsall Hotel, Bury Old Road has had a CPO placed upon it. There is no news yet as to whether there will be a replacement or where it will be. Some of their new accounts have centred upon the Free Trade. These are Holt Bitter put into the Bulls Head, Whitefield; Pineapple,

Whitehall Street, Rochdale; Nags Head, Charlestown Road, Glossop and the Stop & Rest, Fielding Lane, Oswaldtwistle.

Holt's also took a stand at the recent Northern Bar and Restaurant Exhibition at the G-Mex centre, exhibiting their bottled beers with the addition of Holt Bitter and Thunderbolt on draught.

The current seasonal beer is Fifth Sense.

Stewart Revell (stewart.revell@gmail.com).

From The Marble Vaults

Gong for Marble Arch. CAMRA North Manchester is to give a prestigious award to the Marble Arch for 10 continuous years in the CAMRA Good Beer Guide, having never been out of the guide since 1998. Being one of the premier Mancunian watering holes in the city it's also the home of the organic brewery, Marble. The branch will be holding a social and presentation of the official CAMRA plaque on Wednesday, 30th May from 8.00pm and all are welcome to attend.

On the cask beer front a new mild ale, Half Cut at 4.1% abv has been introduced, principally for the Stockport & Manchester Mild Challenge. A 6.0% abv version of Ginger has been brewed to appear at the charity stall in Stockport Beer & Cider Festival later this month. Expect a big demand for this; only being available in a 9 gallon cask. Also due out later this month is Summer Marble 2007, a popular return for this thirst quenching beer.

The bottled beer range, however, has seen a mini revolution. Versions of Ginger at 6% and Stronge Tawny at 5.7% have been released and also two more favourites, the popular Chocolate and Lagonda are on sale, too. These are purported to be newer, fresher brews.

Boddingtons Blown Away

Just after our first issue went to press the bulldozers moved in on the former Boddingtons' brewery site. All the existing buildings are due to be demolished except for the chimney which is a local landmark; the only good point to remain, really and it is presently adorned with a contractors' banner covering the Boddingtons' lettering. Henry Boddington took over the brewery in 1853 from which time a number of the buildings date. It was then developed and expanded and the once

proud Brewery Tap pub stood out on the front of the road; at one time it was the focal point of the brewery tours, offering fine food and ales. All these buildings are due to go over the coming three to four months or so except for the aforementioned chimney.

The last few years has seen a decline in the sales of Boddingtons' beers and the noticeable loss of their cask mild a long while ago. They even produced strong ale too. All that remains is Boddingtons Bitter which enjoyed a mini revival, being marketed as the 'Cream of Manchester'; but there was a shift towards smoothflow and the Belgian parent company In Bev decided to switch production to Samlesbury near Preston, Magor in South Wales and Glasgow in Scotland. The cask version still enjoys a stance though, being brewed by Hydes at their Moss Side brewery. The site, recently acquired by developers is under negotiation with the City Council's planners.

Doing the Dutton

This brings us onto the subject of the Dutton Hotel in Park Street, situated behind the aforementioned demolition site. This is an excellent survival of a back street corner local pub, wedge shaped due to its position on a sharp corner which was often frequented by the Boddingtons' staff when they were in residence! There are three small rooms done out in a mock Tudor style, giving off a cosy atmosphere fraternised by a boisterous local mature clientele, and an excellent pint of Hydes is to be had here.

The pub dates from the 1880's, the interior being altered in the late 1970's, if somewhat sensitively. It features a fine collection of brasses, blow lamps and a large anvil in a corner window, the latter being the brewery's symbol.

Some other notable happenings around the city centre have resulted in a 'Pub To Let' sign appearing outside the Shakespeare on Fountain Street. On peering through, only one handpump appeared to be in operation out of a possible three. The former Dr Livvy's on High Street has yet again changed its name. This time round it is now the Market Trader, obviously to try and cash in on would be Arndale shoppers. It looked rather empty when passing ... hmm.

At the beginning of Oldham Street, the former

Late Lounge has now metamorphosed into Joes Bar & Coffee Shop. Shiny chrome lettering and a bright exterior, with presumably no real ale inside. Rumours abound that the City, Oldham Street, having been gutted by fire some time ago is having some alterations done internally. Although nothing can be seen from the outside, it might be being prepared for a reincarnation - and who knows, if it does open again, maybe there's a chance of the real stuff. Continuing along Oldham Road, the Cheshire Cheese, a pub which once sold real ale but hasn't done in a good while, looks to have finally breathed its last. Closed and boarded, with an uncertain future looming, this pub was always very spartan and has been hanging on for the last few years.

Also, the Ace Of Diamonds, on the same stretch of road had its doors closed well before 11.00pm and appeared in darkness.



Golden Paradise

On a recent visit to the ever popular Paradise Brewery Bar in the Arndale Centre in the market complex, there was Paradise Golden Lion on cask at 4.5% abv. It had initially a good taste of bitterness and hops which gave way to a biscuity malt sweetness, which stays until the finish with a malty aroma. There's an interesting range of bottled conditioned beers from Paradise at keen prices. They recently brought out a special beer for Llangollen's first beer festival, back in April. Named '6880' - it's called that to commemorate the steam engine Betton Grange - which runs on the Welsh Rheilffordd Llangollen (Llangollen Railway), a scenic route running between the town and Carrog. Let's hope it'll make an appearance at the Paradise Brewery Bar ... that's the beer, not the engine. *Continued Overleaf >*

White Swan Presentation



The White Swan, Worsley Road, Swinton gets its gong for being in the CAMRA Good Beer Guide for 14 continuous years. Pictured here is Secretary Dave Hallows presenting the award to Eric the Landlord.

Lamb Hotel Presentation



A further presentation was also made for 15 years continuous Good Beer Guide entries. This time it was the turn of the Lamb Hotel, Church Street, Eccles. Dave Hallows again presents the award, received by landlady Telsa.

AROUND THE REGIONS

A Glimpse of Irlam and Cadishead

You'd be forgiven for thinking that the Tiger Moth on Swallow Drive in Higher Irlam was a Holt's pub; think again for this is a genuine free house owned by the landlords.

Joseph Holt Bitter first arrived at the Tiger Moth in 1990 and was arguably the first non-Holt's pub (it was then a Wilsons' establishment) to get this beer when the brewery entered the Free Trade. The current owners have kept faith with one of Manchester's favourite breweries. The Mild, on the other hand, is the smooth version.

The Boathouse, lying at the bottom of Ferry Road is well situated on the edge of Princes Park, overlooking the old course of the 'dark river', the Irwell. The new management team has maintained a real ale policy. The brews are subject to a diverse range and have included Black Sheep Bitter, Courage Directors, Jennings Cumberland Ale, J W Lees Bitter, and Ruddles County.

J W Lees Bitter is also firmly established at the Irlam Steelworks Club, on Liverpool Road, in the centre of Irlam. It is a Member's only club, with bona fide guests welcome.

The rest of the area sadly has succumbed to the tide of the smoothflow revolution. A total of nine pubs along a three mile stretch of road between the Cadishead border and Higher Irlam have no real ale at all.

The Roebuck Hotel, Church Street, Flixton (Joseph Holt) has had a fire in the rooftop area. Damage is not too serious but it is closed until further notice. Even so, it was due to close for a month or so for a major refurbishment anyhow, before the fire.

Stockport Beer & Cider Festival

One of the biggest and most popular beer festivals to hit town is on its way - the 21st Stockport Beer & Cider Festival once again takes place at Edgeley Park Football Ground, home of Stockport County and Sale Sharks.

Once again sponsored by the Stockport Express, and running from Thursday, May 31st until Saturday, June 2nd, it promises many beers and perhaps the largest range of ciders and perries in the north west. Apart from the Friday lunchtime session which is designated a 'quiet' one, there are live music sessions. Families are welcome until 9.00pm and there are outside drinking areas available. One not to be missed, so put this one in your diary. (See advertisement on page 13).

ALONG THE HOPE VALLEY LINE

A PUB CRAWL BY TRAIN

The Hope Valley train route plies its way between Manchester and Sheffield, running through the valley, where there are a number of scattered villages, all suitable to the drinker and walker alike, for this is hiking country with a few hosteleries along the way in which to imbibe.

What follows is a selection of pubs in which to enjoy real ales, by traversing the line. The crawl is scheduled to take place on Saturday, 26 May 2007.

New Mills

Not far from Newtown Station is the Bee Hive, a free house, which often features beers from the Storm Brewery of Macclesfield. There is also an Indian Restaurant upstairs, where the last of these outings finished up. Leaving here we take a short cut, down and across a small footbridge over the River Goyt, next to the Millennium Walkway, and up to New Mills Central Station.

Cheerless Chinley, Welcoming Whitehough

Chinley Station is the last stop on the Hope Valley railway before you enter the Cowburn tunnel. Unlike the next three stations (Edale, Hope and Bamford) it is in the village itself, which would be handy if Chinley hadn't lost its last pub, the Chinley Lodge. The only licensed premises in Chinley now are the Conservative Club selling cask Thwaites's bitter, and Robinson's Crown & Mitre over a mile out of town.

Fortunately, less than a half mile away is the hamlet of Whitehough where there are two more pubs. The Old Hall Inn has been converted from a sixteenth century manor house and has a large beer garden. It sells Marston's and several guest beers, but has limited opening hours. The Oddfellows is a basic, comfortable three room pub with boot-friendly stone floors selling Marston's Bitter and occasionally Pedigree. If boots are muddy they can be changed in the small beer garden at the front where the beer and early evening summer sunshine can be enjoyed after a day's walking.

Hope Hosteleries

The station is a half mile east of the village, so depending on the choice of pub, allowance must be made for the walking time when ordering your final pint. In the centre of Hope are two real ale pubs: the small Woodroffe Arms and a large roadhouse nearby, the Old Hall Hotel. Over to the east is the Travellers' Rest, which is just less than a half-mile south east of the station on the A6187 near the junction of the road to Brough. In the 1970's, a cider-only house owned by Bulmers, today it is much extended with a large beer garden and catering for families with children and customers requiring meals.

However, the best of all, over to the north west is the Cheshire Cheese just a quarter of a mile north of the village centre on the Edale Road. This comfortable GBG-listed hostelry still retains all its Wards signage on the exterior. It has three low beamed rooms: a central bar with a large fireplace, which is half opened into a second room on the same level, and a dining room down a few steps on the other side of the bar. Large meals are served on enormous plates. Black Sheep and Tetley Bitters feature regularly, along with several micros. The station is over a mile away, so allow a good twenty-five minutes to be sure of the train.

Heavenly Hathersage

Just seven minutes' walk from the station is the excellent Little John, a large family-friendly corner free house with a selection of real ales, mostly from Yorkshire micros. Popular with hikers, it is also used by rock-climbing groups, who practise on the nearby Stanage Edge. This will be our final pub and here too, large, value for money meals can be ordered to round off the day. The train back is at 20.54 arriving Piccadilly at 22.03.

TRAIN TIMES FOR PUB CRAWL ALONG THE HOPE VALLEY

Saturday, 26th May, 2007.

It is advisable to check the times of the trains, as those given are provisional, pending the new summer timetable which comes into force on 20 May, 2007. CAUTION! This outing involves nearly five miles on foot.

Blackpool to Buxton train:

Salford Crescent depart 1125; Manchester Piccadilly depart 1137; New Mills Newtown arrive 1206. Visit Bee Hive at 1215, leaving at 1250.

Manchester Piccadilly to Sheffield train:

New Mills Central depart 1312; Chinley arrive 1319. Visit Old Hall Inn (if open) at 1340, then Oddfellows at 1415, leaving at 1455.

Manchester Piccadilly to Sheffield train:

Chinley depart 1519; Hope arrive 1534. Visit Cheshire Cheese at 1600, leaving at 1707.

Manchester Piccadilly to Sheffield train:

Hope depart 1734; Hathersage arrive 1740. Visit Little John at 1747, leaving at 2040.

Sheffield to Manchester Piccadilly train:

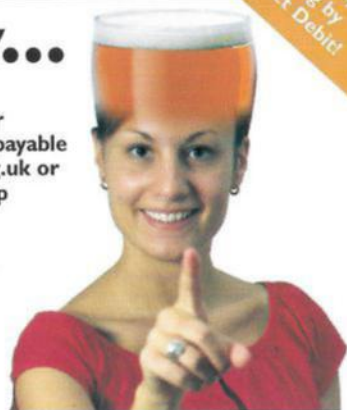
Hathersage depart 2054; Manchester Piccadilly arrive 2203. Note the next (and last) train from Hathersage departs at 2241, arriving in Manchester Piccadilly at 2339.

Pete Cash

It takes all sorts to campaign for real ale

Join CAMRA today...

Complete the Direct Debit form below and you will receive three months membership free and a fantastic discount on your membership subscription. Alternatively you can send a cheque payable to CAMRA Ltd with your completed form, visit www.camra.org.uk or call 01727 867201. All forms should be addressed to Membership Secretary, CAMRA, 230 Hatfield Road, St Albans, AL1 4LW.



Save money by paying by Direct Debit!

Your Details

Title Surname

Forename(s)

Date of Birth (dd/mm/yyyy)

Address

Postcode

Email address

Tel No (s)

Partner's Details (if Joint Membership)

Title Surname

Forename(s)

Date of Birth (dd/mm/yyyy)

Please state which CAMRA newsletter you found this form in?

	Direct Debit	Non DD
Single Membership (UK & EU)	£20 <input type="checkbox"/>	£22 <input type="checkbox"/>
Joint Membership (Partner at the same address)	£25 <input type="checkbox"/>	£27 <input type="checkbox"/>

For concessionary rates please visit www.camra.org.uk or call 01727 867201.

I wish to join the Campaign for Real Ale, and agree to abide by the Memorandum and Articles of Association.

I enclose a cheque for

Signed Date

Applications will be processed within 21 days



Instruction to your Bank or Building Society to pay by Direct Debit

Please fill in the form and send to: Campaign for Real Ale Ltd, 230 Hatfield Road, St Albans, Herts AL1 4LW



This Guarantee should be detached and retained by the payer.

The Direct Debit Guarantee

- This Guarantee is offered by all Banks and Building Societies that take part in the Direct Debit Scheme. The efficiency and security of the Scheme is monitored and protected by your own Bank or Building Society.
- If the amounts to be paid or the payment dates change CAMRA will notify you 10 working days in advance of your account being debited or as otherwise agreed.
- If an error is made by CAMRA or your Bank or Building Society, you are guaranteed a full and immediate refund from your branch of the amount paid.
- You can cancel a Direct Debit at any time by writing to your Bank or Building Society. Please also send a copy of your letter to us.

detached and retained this section

Name and full postal address of your Bank or Building Society

To the Manager Bank or Building Society

Address

Postcode

Name(s) of Account Holder (s)

Bank or Building Society Account Number

Branch Sort Code

Reference Number

Originator's Identification Number

9 2 6 1 2 9

FOR CAMRA OFFICIAL USE ONLY

This is not part of the instruction to your Bank or Building Society

Membership Number

Name

Postcode

Instructions to your Bank or Building Society

Please pay CAMRA Direct Debits from the account detailed on this instruction subject to the safeguards assured by the Direct Debit Guarantee. I understand that this instruction may remain with CAMRA and, if so will be passed electronically to my Bank/Building Society.

Signature(s)

Date

Banks and Building Societies may not accept Direct Debit instructions for some types of accounts.

HIDDEN SALFORD



The Star Inn

A couple of hidden gems still grace the streets of Salford. Back in 1901, Salford had the highest number of pubs per population with two or three hostelries in every street. Many may have bitten the dust, many are long forgotten, but there are still some exceptions which survive and are doing well.

The Star Inn on Back Hope Street, an ex-Kay's pub, is hidden away in the Cliff district of Higher Broughton and hails from the 19th Century. Now a Robinsons' brewery house, there's one exceedingly good pint of their Unicorn Bitter from the tiny vault with bar, that can fit about 14 people in, with some standing. The overflow is in the larger and mostly original saloon with ink-green pig skin bench seating. At the back is the games room which can double up as a quiet room. Most evenings there's the comfortable hum of many conversations, throughout the pub. For donkey's years the pub was run by the renowned 'one-armed' Wally Marshall and many of the locals from that era are still there. In fact, for the last six years or so, the pub is now run by two former regulars - the Cranks! No one's a stranger here for long as everyone is on first name terms. So, it's mine hosts Jim and Cath Crank and their staff of Shirley and Mavis, with a loyal band of regulars, who love this pub. Banter is always good-humoured and there's plenty of comment when Manchester United are on the box, as the pub is a short way from United's Cliff training ground now used for the youth teams.

At times the banter turns to the now closed pub over the cobbled street opposite - the **Horseshoe Inn** (noted for the ornate tiled sign of the defunct

brewery from Openshaw). It was only a couple of years ago that the Horseshoe was doubled in size at massive cost and sensitively done (both of these pubs are in a conservation area). Then it was sold and closed just over a year after the revamp. Now, there's nearly always a rumour that it will reopen again, but nobody's holding their breath. Now the pub is up for let as storage space and several 'other uses'.



Racecourse Hotel

About 25 minutes' walk away in Lower Kersal is another gem; the **Racecourse Hotel** on Littleton Road. Certainly less hidden than the Star, the pub is enormous and magnificent! This Mock Tudor pub built in 1930 was saved and renovated by the Barnsley brewer, Oakwell. The pub once served the adjacent Salford racecourse; hence the size. The main bar in the lounge is 51 feet long! The pub was awarded the CAMRA and English Heritage Best Pub Refurbishment for 2005. Inside, there are various separate rooms with a smaller separate vault and entrance. This hostelry has fantastic oak paneling throughout and mock Tudor arches with original flooring. It doesn't take long before the combination of a well-bittered pint of Barnsley Bitter at a very keen price of £1.42 and mementos from the Sport of Kings has its effect - it's a great pub! There's a new addition of a large beer garden outside by the River Irwell, which should prove popular. What with hopes for a return of the racecourse, possibly nearby, the glory days could be back for this gargantuan house, steeped in history, which resonates with its bygone horse racing atmosphere. A giant reawakened! **The Star Inn** is served well by the 98 bus route from Manchester to Bury; the **Racecourse** can be reached by the 93 and 95 bus routes. Two good pubs, which are simply a must.

Dave Hallows

A CORNUCOPIA OF PUBS AROUND THE NORTH OF THE CITY

Dave Hallows goes around a selection of pubs in the Northern Quarter and just outside, to see what's doing.

From one up market city centre hostelry in the Northern Quarter, the Odd Bar on Thomas Street; to one on Piccadilly. The Brunswick on Piccadilly proved a hit and miss affair recently. The **Odd Bar** has had a few good reports recently. Indeed it won the accolade of 'Bar of the Year' at the last Manchester Food & Drink Festival and is popular in the ever-trendy Thomas Street area. Nearby there is a new bar opened up - **Trof**, another of the Thomas Street newcomers, which has no real ale but a good selection of Continental beers both on draught and in bottle,



the most notable being the Jever from Germany. Alas, the last two visits to the Odd Bar revealed no real ale to be had, despite the good reports and the bar being busy. It was a mid-week evening, but on a third visit they did have Marble Lagonda IPA on.

Around the corner on High Street is the former Whitbread and then Hogshead chain pub; now the **English Lounge**. Again, this is an up-market large and busy pub, offering Black Sheep Best Bitter, Marston's Pedigree, Timothy Taylor Landlord and the Wychwood Hobgoblin (of the 'What are you afraid of lager-boy?' advertisement), which was in good nick too.

Further along again and returning to Thomas Street is the **Millstone**, for the past several years a Lees' house. Sadly, there is no cask GB Mild on here, but the Bitter was found to be in fine form. Now into Church Street, where the **Unicorn** is a fine Edwardian creation, a pub with fine oak paneling throughout and some intimate drinking

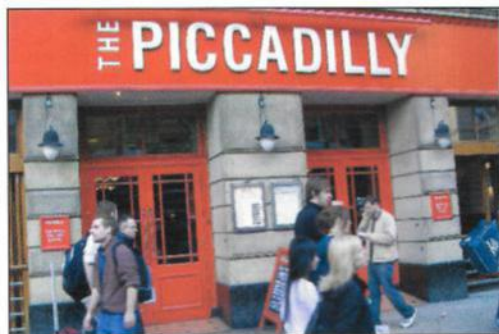
areas. It features Bass Draught Ale (possibly the finest example of this beer in the city and one which gained the pub its reputation when once owned by the Bass Brewery), Boddingtons Cask, and Caledonian Deuchars IPA as their handpulled offerings.

On Back Piccadilly there's the tucked-away **Mother Macs**. Sadly, on this visit the one real ale they usually have was not on, but it's Tetley Bitter when it is.

The **Crown & Anchor**, Hilton Street, in its past glories had a good reputation for real ales, being a Whitbread house and then part of their Beer Engine concept, but then it hit the doldrums. Now there's a good quality selection of Caledonian Deuchars IPA, Shepherd Neame Spitfire along with Timothy Taylor Landlord to be had.

On Piccadilly there are two busy emporiums in the **Piccadilly** and the **Brunswick**. The former is like a large 'Spoon' and despite various people scoffing "It'll never last", has, since a refurbishment and introduction of real ale some time ago, it's kept up the tradition with the proper stuff still on! Boddingtons Cask and Timothy Taylor Landlord was joined by a mild, no less, in the form of Moorhouse's Black Cat.

One always hates to finish on a downer, but there's no other way of looking at it. The Brunswick, up market to serve the city gent and the great and good, was on this occasion not serving beer of a reasonable quality, at least on the cask ale front. Three of the Theakston range of beers are available with Best Bitter, Mild and the stronger Old Peculier, which was stale and murky and priced at £2.90 a pint with the other two at £2.65. An astonishing price for tired, on-the-turn beer.





**OVER 100
BEERS, CIDERS
& PERRIES**

**COME AND CELEBRATE
OUR COMING OF AGE!**

BEER & CIDER FESTIVAL

**MAY 31ST - 2ND JUNE 2007
EDGELEY PARK • STOCKPORT**



EVENING
5.30PM-11.00PM

ADMISSION £2
LIVE MUSIC

**Tame Valley
Stompers**



**ORGANISED BY THE
CAMPAIGN FOR REAL ALE**

EDGELEY PARK
HOME OF STOCKPORT
COUNTY & SALE SHARKS

**SEATING FOR ALL -
OUTSIDE DRINKING
AVAILABLE**

Supporting

*Independent
Options*

**FAMILIES WELCOME
UNTIL 9.00PM**

Sponsored by

**The
STOCKPORT EXPRESS**



LUNCH
11.30AM-3.30PM

**ADMISSION
FREE**

**QUIET DRINKING
SESSION**

**HOT & COLD FOOD
AT ALL SESSIONS**

EVENING
5.30PM-11.00PM

ADMISSION £4
LIVE MUSIC

**Simon "Honeyboy"
Hickling & the DT's**



LUNCH
11.30AM-4.00PM

ADMISSION £1
LIVE MUSIC

Treebeard

EVENING
6.30PM-11.00PM

ADMISSION £2
LIVE MUSIC

**New Lights
Big Band**

Visit our Web Site: www.stockportfestival.fsnet.co.uk

WHERE WE GO AND WHAT WE DO THE BRANCH DIARY

North Manchester

MAY

Wed 9: City Centre Crawl around Princess Street - Vine Inn, Kennedy Street, 7.30pm. City Arms, Kennedy Street, 8.00pm. Waterhouse, Princess Street, 8.30pm. Old Monkey, Portland Street, 9.00pm. Circus Tavern, Portland Street, 9.30pm. Grey Horse Inn, Portland Street, 10.00pm.

Sat 12: National Mild Day Crawl - Marble Arch, Rochdale Road, 12.00pm.

Wed 16: Branch Meeting - New Oxford, Bexley Square, Salford, 8.00pm.

Wed 23: Social - Star Inn, Back Hope Street, Lower Broughton, 8.00pm.

Sat 26: Hope Valley Line Pub Crawl (by train) - see article on page 9 for details and itinerary.

Wed 30: Good Beer Guide Presentation (10 years continuous) - Marble Arch, Rochdale Road, 8.00pm.

JUNE

Wed 6: D-Day Crawl - Odd Bar, Thomas St, 8.00pm. Dutton, Park Street, 9.00pm, Derby Brewery Arms, 10.00pm.

Wed 13: Chorlton Crawl - Marble Beerhouse, Manchester Road, 7.30pm. Bar, Wilbraham Road, 9.00pm. Buses 85, 86 from Piccadilly (frequent).

Wed 20: Branch Meeting - Hare & Hounds, Shudehill, 8.00pm.

Wed 27: Social (and presentation to publicans Idy & Sal) - Crescent, Crescent, Salford, 8.00pm.

JULY

Wed 4: City Centre Crawl north to south - Unicorn, Church Street, 7.30pm. Sinclairs Oyster Bar, Cathedral Gates, 8.30pm, Sir Ralph Abercromby Inn, Bootle Street, 10.00pm.

Sat 7: Independents' Day Treasure Hunt - Marble Arch, Rochdale Road, 12.00pm.

Branch Contact: Dave Hallows.

Telephone: 07983944992.

Email: davehallowes2002@yahoo.co.uk.

Trafford & Hulme

MAY

Thu 3: Branch Meeting - Lloyds Hotel, Wilbraham Road, Chorlton, 8.00pm.

Tue 15: Joint Social with Stockport Branch

around Chorlton area - Famous Trevor Arms, Beech Road, 8.00pm. Beech, 8.30pm. Lloyds Hotel, Wilbraham Road, 9.15pm.

JUNE

Thu 7: Branch Meeting - Briton's Protection, Great Bridgewater Street, Manchester, 8.00pm.

Wed 13: Invitation to join North Manchester Chorlton Crawl - see above for details.

Sat 16: Joint Social with South Cheshire Branch around Manchester's Northern Quarter - Jolly Angler, Ducie Street, 1.00pm. Crown & Kettle, Oldham Road, 2.00pm.

Sat 23: Howard Town Brewery Trip, walk and pub crawl with High Peak Branch in Glossop - Train at 1019 from Manchester Piccadilly and meet up with Frank Wood for a walk taking in the local scenery. Then on to Howard Town Brewery, 1.00pm. Beer and Food for £10. Limited numbers; book at the May Branch Meeting. Finish off with a crawl around the town, 4.00pm.

Thu 28: Branch Social around Altrincham and Hale - Tatton Arms, Tipping Street, 8.00pm. Cheshire Midland, Ashley Road, 9.00pm. Railway Inn, Ashley Road, to finish.

JULY

Thu 5: Branch Meeting - Venue to be confirmed.

Sat 7: Branch Social in Cheshire - Railway, Mill Lane, Heatley, 1.00pm. Barn Owl, Agden Wharf, Warrington Lane, Heatley, 2.00pm. Then onwards.

Branch Contact: John Ison.

Telephone: 0161 962 7976.

LOCAL BEER FESTIVALS AROUND THE REGIONS

(not necessarily endorsed by CAMRA)

MAY

Thu 3 - Mon 7: 6th Great Harwood Beer Festival, Royal Hotel, Station Road, Great Harwood.

Fri 11 - Sat 12: 15th Frodsham Beer Festival, Community Centre, Fluin Lane, Frodsham.

Fri 11 - Sat 12: 5th Halifax Mayfest, Square Chapel Centre for the Arts, Square Road, Halifax.

Fri 11 - Sat 12: 13th Macclesfield Beer Festival, Macclesfield Rugby Club, Priory Park Lane, Macclesfield.

Thu 17 - Sat 19: Chester Charity Beer Festival 2007, Chester Rugby Club, Hare Lane, Vicars Cross, Chester.

Thu 17 - Sun 20: May Beer Festival Part I, Black Horse, 72 Redearth Street, Darwen.

Fri 18 - Sat 19: Rail Ale Festival, Barrow Hill Roundhouse, Campbell Drive, Barrow Hill, Chesterfield.

Thu 24 - Sun 27: May Beer Festival Part II, Black Horse, 72 Redearth Street, Darwen.

Fri 25 - Sun 27: 1st Skipton Beer Festival, Town Hall, High Street, Skipton.

Fri 25 - Mon 28: Four Nations 4th Anniversary Beer Festival, Fox & Goose Inn, 9 Heptonstall Road, Hebden Bridge.

Fri 25 - Mon 28: Good Sam 3rd Beer Festival, Good Samaritan, Peel Brow, Ramsbottom.

Thu 31 - Sat June 2: 21st Stockport Beer & Cider Festival, Edgeley Park Football Ground, Hardcastle Road, Stockport.

Thu 31 - Sun June 3: Beer, Bangers and Blues Festival, West Riding Refreshment Rooms, Wellington Road, Dewsbury.

JUNE

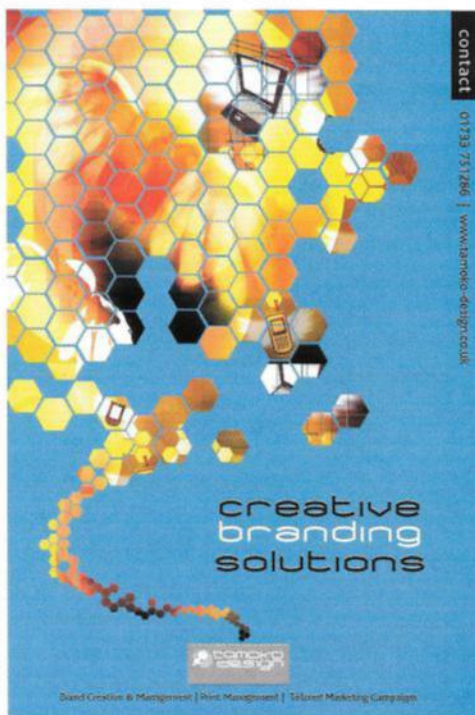
Fri 15 - Sun 17: Brewers Weekend, Prince Of Wales, Foxfield, Broughton-in-Furness.

Thu 21 - Sun 24: June Beer Weekend, Black Horse, 72 Redearth Street, Darwen.

AN APOLOGY

In our previous issue we stated that Bazens' Doctor's Orders name change was due to their being refused permission to use the name by Christopher Eccleston or someone involved with Doctor Who.

This was not the case at all - they were unable to contact the relevant people to get permission for the reference to the programme so out of courtesy to them changed the name just in case there were any objections. We would like to apologise to all concerned and for any embarrassment this may have caused.



creative
branding
solutions

contact 01233 751266 | www.danmo-design.co.uk

David Creative & Management | Print Management | Tailored Marketing Campaigns



**TRADITIONAL
HAND-CRAFTED CASK
CONDITIONED
FINE ALES**

**FROM CHESHIRE'S AWARD
WINNING BREWERY**

**COACH HOUSE BREWING
COMPANY LTD
WHARF STREET, HOWLEY
WARRINGTON CHESHIRE**

TELEPHONE 01925 232800

TRADITIONAL BEERS for MODERN TASTES



Pacific Bitter 3.8% Blue Bullet 4.5%

Flatbac 4.2% (Beer of the Festival, Stockport 2003 & BIA Bronze 2004)

Black Pig Mild 3.6% (Bronze for Mild, CBoB 2003)

Knoll Street Porter 5.2%

(Gold - Porters & Stouts, CBoB 2006,

Silver - Porters & Stouts, SIBA North Beer Competition 2006)

plus seasonals & monthly specials*

For more info, please see

www.bazensbrewery.co.uk,

phone 0161 708 0247

or email bazensbrewery@mac.com



* All beers subject to availability



Greenfield
Real Ale
Brewery

Greenfield Real Ale Brewery

Waterside Mills, Greenfield,
Saddleworth OL3 7NH

Tel. 01457 879789

info@greenfieldrealale.co.uk

www.greenfieldrealale.co.uk

*Real Ales brewed with fine natural
ingredients and Greenfield Spring Water
for extra taste !!*

Come and find our '**Secret Brewery**' on the edge
of the Peak District National Park. Whilst here
enjoy a Brewery Tour followed by a few pints
(or more) at our Brewery Bar.

Our beers are often named after local
sources such as :-

Dobcross Bitter 4.2 abv -

an attractive 18th century stone village.

Delph Donkey 4.1 abv -

the last Steam Train from Delph in 1955.

Castleshaw 4.2 abv -

location of a nearby ruined Roman Fort.



Five ever-rotating guest Cask Ales

Seven imported draught Belgian Beers

Over **forty** guest-bottled beers imported from Belgium,
Germany and Czechoslovakia.

Thatcher's bottled single variety ciders, plus Cheddar
Red Cider sold from the tub, also Swedish Ciders
from Herrljunga.

In the Good Beer Guide for the last 9 consecutive years

We are in the Belgian Good Beer Guide, and were runners
up in the National Class Awards for the best beer range
available in a UK bar in 2006.

Food is available from: 12noon until 8pm Sun - Thurs,
12noon until 4pm Fri & Sat

**FRINGE
BAR**

8 Swan Street, Manchester M4 5JN Tel: 0161 835 3815