

FREE
PLEASE TAKE A COPY



JULY/AUGUST 2007
ISSUE THREE

DRINKER'S ALEMANAC

incorporating *What's Doing*
covering Manchester, Salford and Beyond

SMOKING RESTRICTIONS - A POSITIVE FUTURE FOR THE LOCAL?

IN THIS ISSUE

- | | |
|---|-----------|
| Editorial | 3 |
| <i>A quick word from the editor</i> | |
| Spotlight on Two Cities | 6 |
| <i>News from Manchester & Salford</i> | |
| Brewing in Pendleton | 10 |
| <i>Feature</i> | |
| Young Members | 12 |
| <i>Working Social</i> | |
| Forthcoming Events | 14 |
| <i>Whats going on in your area</i> | |



Produced by the North Manchester Branch of the CAMpaign for Real Ale
www.camra.org.uk/nmanchester

**Bohemia
regent**



PREMIUM CZECH LAGER
ESTABLISHED 1379



**BOHEMIAN
LIKE YOU**

**BREWED IN
THE CZECH
REPUBLIC,
ENJOYED IN
THE UK**

IMPORTED INTO THE UK BY

JW LEES & CO. (BREWERS) LIMITED,
GREENGATE BREWERY, MIDDLETON JUNCTION,
MANCHESTER M24 2AX.

JW Lees Switchboard: 0161 643 2487 | Sales Office: 0161 643 4289
Email: enquiries@jwlees.co.uk | Website: jwlees.co.uk

bohemia-regent.co.uk

DRINKER'S ALEMANAC

FROM THE EDITOR'S CHAIR

Smoking restrictions (I personally prefer 'restrictions' rather than 'ban' as it's a smoke-free law) finally came into place on July 1 in England, now covering public places throughout Britain and Ireland. Whether or not you agree or disagree, it can only be a good thing in these health-conscious modern times of ours.

What effect it will have on the numbers who frequent public houses as such, only time will tell, but indications from previous restrictions in the British Isles appear quite favourable.

DISTRIBUTORS WANTED!

If you are a CAMRA member, please consider giving up some of your time to distribute our North Manchester Branch magazine, Drinker's Alemanac.

We are looking for persons to deliver to the pubs close to where you live, work or play.

As an incentive CAMRA North Manchester Branch will give you two free complementary tokens, to be exchanged for pints which will be valid at the next National Winter Ales Festival which takes place at the New Century Hall, Manchester in January 2008.

As the magazine is bi-monthly, it will only mean giving a little bit of your time up every other month.

For full details contact Dave Hallows on telephone number 07983 944992 or Email to davehallows2002@yahoo.co.uk

Magazine design and layout:

Tamoko Design Tel: 01733 751286

For information regarding advertising please contact:

Neil Richards MBE: 01536 358670

Contacts

Editor: Steve Smith.

Email: Manpubs2006@aol.com.

Assistant Editors: Dave Hallows.

Email: davehallows2002@yahoo.co.uk.

Ian Kenny Email: ipkenny@supanet.com.

Your views and any correspondence should be sent to the editorial address: c/o 3 Routledge Walk, Harpurhey, Manchester M9 4DT or to the Email addresses above.

Copy date for September Issue: 15th Aug.

Publication date for Issue Four: 3rd Sep.

Subscription Rates

£2.00 for mailing of six issues should be sent to Roger Hall, 123 Hill Lane, Blackley, Manchester M9 6PW. Please make cheques payable to CAMRA North Manchester.

Contributors to this issue: Alan Gall, John Gobbett, Dave Hallows, Andy Jenkinson, Beverley Rae, Stewart Revell, Steve Smith, Roger Wood.

Photographic Credits: Chris Wainwright, Dave Hallows, Andy Jenkinson, Andrea Ku.

Trading Standards

Should you wish to make a complaint concerning certain aspects of service regarding the pub, firstly it is better to take it up with the management of the establishment concerned. If however the matter cannot be resolved you may wish to contact your local Trading Standards office.

These are located as follows:

Manchester City Council -

1 Hammerstone Road, Gorton, Manchester M18 8EQ. Tel: 0161 234 1555. Fax: 0161 957 8379. Email: tradingstandards@manchester.gov.uk.

<http://tradingstandards.gov.uk/manchester>.

Salford City Council - Turnpike House, 631 Eccles New Road, Salford M5 2SH. Tel: 0161 925 1346. Fax: 0161 925 1199. Email: ron.pennington@salford.gov.uk.

Disclaimer

Readers are reminded that the editorial team or the Campaign for Real Ale may not necessarily share the views expressed by the contributors. Contributions are always gratefully received but may be edited without altering the meaning and certain grammatical errors, if spotted in time, may be corrected. As with any free publication, space is at a premium and publication can not always be guaranteed. All articles are © Campaign for Real Ale and may be reproduced if source acknowledged.

SMOKING RESTRICTIONS - A POSITIVE FUTURE FOR THE LOCAL?

Section two of the Health Act 2006 sets out that all premises that are open to the public, or are used as a place of work by more than one person or where members of the public might attend to receive or provide goods or services, are to be smokefree in areas that are 'enclosed' or 'substantially enclosed' from July 1, 2007. Premises will be considered 'enclosed' if they have a ceiling or roof and (except for doors, windows or passageways) are wholly enclosed either on a permanent or temporary basis.

The new law is being introduced to protect employees and the public from the harmful effects of secondhand smoke. So how does this affect that British Institution, the English public house?

No smoking signs will have to be displayed in all smokefree premises, creating a 'cleaner air' environment. Staff smoking rooms and indoor smoking areas will no longer be allowed, so anyone who wants to smoke will have to go outside. Some public houses will be providing areas around the outside of their hostelrys, open air spaces, smoking shelters and the like, to cater for those wishing to partake of the weed.

Some early signs in the past, especially across the water in Ireland, gave reports of disastrous takings due to this, the loss of people refusing to visit the pub and preferring to drink at home instead. It's not all doom and gloom however; things are starting to pick up, as people accept the fact that a smokefree environment is beneficial to all and are coming to terms with it. However, there are the scare mongers who predict that many pubs will be lost in England, due to this. But aren't they being lost already to the developers anyway?

Everyone is entitled to their opinions - maybe you don't get rid of anything by restricting it or

banning it - but some publicans who have experienced with the scheme well before the deadline date have seemed to have succeeded in attracting more customers, not fewer.

Whether we like it or not, due to the health hazards encountered by smoking, it's here to stay. We can only encourage more people to visit the pub on a regular basis to ensure its continued survival.

Yes! There is a future for the English pub - let's drink to that one - and we'll see you down the local.



**Stocktaking, A Complete Stock Report
Produced on Site
Bookkeeping/Accounts/VAT Returns
Full Professional Payroll Services**

*Over 30 years experience in the trade
We offer a quality service at competitive prices
First appointment free (PLUS A FREE GIFT)
For full details contact Peter Mansell*

**FREE PAYROLL WITH
GOVERNMENT GRANT**

Telephone: 0161 339 9283

Mobile: 07785 583844

www.spoton.gbr.cc

Email: peter@spoton.gbr.cc

**Member Institute of Licenced
Trade Stock Auditors**

Crown & Anchor

*Traditional pub serving a
selection of well-kept
cask ales*

Good homecooked food
served from 12 - 2pm

Bed & Breakfast available

41 Hilton Street, Manchester

Tel: 0161 2281142

TRADITIONAL BEERS for MODERN TASTES



Pacific Bitter 3.8% Blue Bullet 4.5%
Flatbac 4.2% (Beer of the Festival, Stockport 2003 & BIA Bronze 2004)
Black Pig Mild 3.6% (Bronze for Mild, CBoB 2003)
Knoll Street Porter 5.2%
(Gold - Porters & Stouts, CBoB 2006,
Silver - Porters & Stouts, SIBA North Beer Competition 2006)
plus seasonals & monthly specials*

For more info, please see

www.bazensbrewery.co.uk,

phone 0161 708 0247

or email bazensbrewery@mac.com



* All beers subject to availability

HANBY ALES LTD
Est. 1988

New Brewery, Aston Park, Soulton
Road, WEM, Shropshire SY4 5SD

**Nutcracker
Gold Medal Winner
GBBF 2005
Strong Bitter**

Quality Ales Brewed the Old
Fashioned Way
With 14 Permanent Beers
Plus Monthly Specials

Tel/Fax: 01939 232432
email: info@hanbyales.co.uk
www.hanbyales.co.uk



**TRADITIONAL
HAND-CRAFTED CASK
CONDITIONED
FINE ALES**

**FROM CHESHIRE'S AWARD
WINNING BREWERY**

**COACH HOUSE BREWING
COMPANY LTD**

**WHARF STREET, HOWLEY
WARRINGTON CHESHIRE**

TELEPHONE 01925 232800

SPOTLIGHT ON TWO CITIES

Crescent Saved?

As Drinker's Almanac went to press, news came through that there is a good possibility that the Crescent, close to Salford University, will remain as a pub.

The sale of this CAMRA Good Beer Guide listed pub is yet to be finalised, but there is a good chance of it continuing as a pub.

A property developer who runs the nearby Salford student homes looks set to purchase the pub and renovate the derelict adjoining house on Massey Street which is to become student accommodation. He aims to keep the pub running on similar lines as before.

In the interim the present owners, Andy and Jo Davies were scheduled to be back at the helm, with publicans Idy and Sal departing at the end of June. There will be a number of familiar faces staying on behind the bar.

A presentation was arranged by CAMRA North Manchester at the end of June of a silver salver to mark their lasting endeavours by supporting real ale in pubs in both Liverpool and Manchester, especially the Crescent.

Bazens'

The new seasonal special, Local Hero, is out next week and celebrates Salford's Mark Addy. He was born on the banks of the River Irwell and became famous for rescuing over 50 people from the dangerous waters, which were more like an open sewer. He was the only civilian to receive the Royal Albert Medal (the Victoria Cross) from Queen Victoria. It is hoped that the beer will feature in the pub of the same name, on Stanley Street, where, if it sells well, it will attract attention from the local media, including CAMRA publications.

Jude has put the finishing touches to the 'shop' page on the website, which should be available to view soon.

Boggart Bulletin

Brewer Mark Dade's Moston micro brewery, Boggart Hole Clough, brings out an enormous number of special beers to compliment a large regular beer list. The 'Mild Month of May' saw

Light Mild out at 3.9% abv - this was a pale beer and drank rather like a bitter. This breaks a trend by some other breweries that have dropped the word 'Mild' from their beer brands and clips, so renaming their beers but without changing the recipe. For instance, it's some years ago that Robinson's just called theirs Hatters Mild and Dark Hatters Mild, renaming them to Hatters and Dark Hatters respectively. Indeed these beers can be tried at the Castle on Oldham Street (both varieties) and the former at the Smithfield Hotel & Bar on Swan Street, depending on availability. Boggart's Sun Hill (4.5% abv) was a pale golden bitter that came out soon afterwards. Out in July is Gogbrats Leaplea (4.4% abv) which is a pale bitter, to be followed by a dark beer called Worcester Sauce. Yummy!

Holt's Corner

Good News this month regarding 'Real Ale in a Bottle' from Head Brewer, Keith Sheard at the brewery.

They are going ahead with a brew, which presumably will be in 500 ml bottles, called Pioneer at 5.2% abv. Brewed with English Malt and Pioneer Hops, it commemorates the founder, Joseph Holt and his election for Business Man of the Year in Manchester during the 1800's. No ideas yet as to the actual year or indeed the retail price but it should be made available from August.

From The Marble Vaults

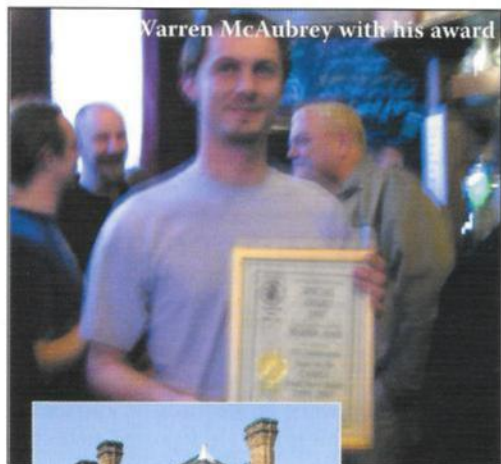
10 beers for 10 years - that was the latest theme of the Marble Brewery's display on offer during their recent presentation. CAMRA (the Campaign for Real Ale) North Manchester Branch awarded the Marble Arch a certificate for 10 consecutive years in their flagship publication, the Good Beer Guide.

The pub has been featured from 1998 - 2007 and pictured is bar manager Warren McAubrey showing the certificate.

The beers on offer included the local favourites Chocolate, Ginger, GSB, Lagonda IPA and Manchester, along with some new additions and variations on handpumps and in bottles, which featured the very dark and palatable Half Cut Mild (4.1% abv); JP (John Palmer - named after the one time bar person and latterly cleaner who is recovering from a serious illness - we wish him

well) Bitter; a rebadged version of Road Rider; Summer 2007 (4.5% abv), the latest seasonal brew; a 6% abv version of Ginger and finally the Strong Tawny.

Further news circulating is that Rob (late of the Crescent) has moved across to the Marble Arch as their new bar manager, Warren moving into the brewing side of things assisting James, Dominic and Colin.



Warren McAubrey with his award



The Marble Arch

Charity Gig at the Castle

Just as we went to press, the Castle Hotel on Oldham Street in Manchester had arranged

a charity event in aid of Cancer Research and Marie Curie Cancer Care.

This was a benefit concert to raise funds for both charities and took place over the weekend of June 30th and July 1st.

20 of the best unsigned bands and acoustic artists from the Manchester area have kindly agreed to donate their time in order to play at the event, with the aim being to raise as much money as possible.

Damien Smethurst, landlord of the Castle Hotel said: "My mum died last year from cancer, and I have an aunt who is also terminally ill. This is an illness that affects far too many people every year,

and anything we can do to help find a cure or assist other families who are going through what my family are going through, is more than worth the time and effort involved in organising such an event. With the smoking ban coming in on July 1st, I felt it would be an ideal time to put something together that coincides with that."

The event, which began at 2.00pm, had ten acts playing over each of the two days, with admission free of charge, although donations were requested. There was also a raffle organised for both days, with novelty prizes being donated by each of the acts involved.

Damien continues: "The aim is for us to have as much fun as possible over the weekend, whilst still ensuring that we keep in mind the reason that we're all giving up our time. We all appreciate that there will be a lot of people who want to show support, but will not be able to make it to the event, and with that in mind have set up websites for donations on-line."

People can donate to whichever of the two charities they prefer on-line, at the following sites:

For Cancer Research go to: www.justgiving.com/CastleRocksCancer;

For Marie Curie Cancer Care go to - www.justgiving.com/CastleRocksMarieCurie. We hope to carry a full report of the event in our next issue.

From the Cheapest to the Most Expensive.

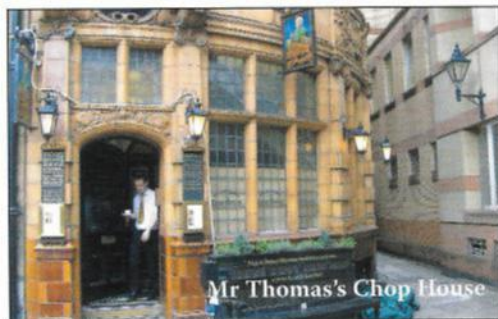
An Oyster Bar then Two Chop Houses.

On a recent visit in April round Manchester, some of the branch members went on a Chop! Chop! crawl. Dave Hallows took his notebook and pencil along...

Three Mancunian institutions - which have been around in some shape or form since the year dot are, in the 21st Century (as far as real ale prices go) poles apart.

Sinclair's Oyster Bar, having been moved, twice is now situated at 2 Cathedral Gates, adjacent to the Old Wellington Inn. Both these touristy hostelleries smack of 'location, location, location', as both are gold mines, especially so Sinclair's with their very reasonably priced Samuel Smiths Old Brewery Bitter at £1.36 a pint. This represents good value for the city centre and was on good form on my last visit.

The other two institutions are Mr Thomas's Chop House, 52 Cross Street and Sam's Chop



House, located at 6-10 Chapel Walks just off Cross Street. This is where the £3 pint has finally made its mark (£1.55 for a half) for the proper stuff.

At Mr Thomas's the beer range at that price was Bass Draught Ale and Black Sheep Best Bitter, with Boddingtons Cask at £2.75. On this visit the J W Lees Bitter had just gone off and a continental beer, Leffe Blonde, is also featured on draught. Needless to say the beers were in good condition for the price and just as well. It might be fair to say one was paying for the privilege of drinking in such opulent Victorian splendour and at an up market restaurant. Outside on the main street the enterprise is wrapped in scaffolding as renovation is underway. Through the main door the patron is met by a bar parlour, somewhat modernised, albeit tastefully so. The restaurant is impressive with its original green and cream tiling and it's good to see an establishment for the business classes having a number of real ales on, while pushing the usual bottles of wine.

Sam's Chop House echoes the same with a slightly differing range of ales - Boddingtons Cask, Flowers IPA, J W Lees Bitter and Wells Bombardier. The best buy by far though is Sam's

Special Best Bitter for £2.70 per pint. Most of the gang opted for this 'house' beer, brewed by the Coach House Brewing Company of Warrington and deemed to be in good nick. The enterprise is set in the basement of the building and is thankfully, not part of the planned redevelopment of the upper storeys. Consisting of one long room with a semi-circular bar and original stone slabs from the Town Hall with quite a large, but cosy and swish restaurant operation, one side is beset with dining booths. If you're hungry, be guided by the fact that a portion of fish and chips here will set you back £11.95 and a bowl of soup £6. These are just two examples (time to get the platinum credit cards out?) and as with its previously mentioned sister establishment, much on a par.

AROUND THE REGIONS

The local B & M 'cheapo' store in Harpurhey is selling bottle conditioned Scuttled, 5.5% abv smooth dark ruby ale brewed in Cornwall by the Carn Brea Brewery at Redruth. It carries the 'CAMRA says this is real ale' logo and states that it is a blend of pale, crystal and black barley with English hops, selling for the knock down price of £1.19 each.

News has filtered through of a couple of real ale gains in the Chorlton area. To begin with, there is the Abode on Wilbraham Road which has two to three cask beers on offer. These can be from the likes of Moorhouses and Hydes amongst others, plus bottled Belgian ales. The place can get a little noisy sometimes but worth it for the beers, in decent form we are told - and it's next door to the Bar.

Secondly Pi on Manchester Road dispenses Bank Top Flat Cap and a guest from local micros. Pints are served in dimpled handled pots and there are also a number of bottled beers from around the world - including Belgium. The main food item here is - wait for it - pies! Geddit.

Trafford & Hulme's Pubs of the Season

It was a fantastic turnout from CAMRA members and the drinking public in April when we presented John at the Old Market Tavern in Church Street, Altrincham with the Trafford Spring Pub of the Season award. The Old Market

Tavern is undoubtedly the branch's premier real ale outlet and what a difference a year makes. Just over a year ago the branch was stunned when the pub closed unexpectedly; rumours ran rife, but thankfully under the stewardship of John the pub reopened. A major spring clean had taken place and since then the pub has gone from strength to strength.

We were treated to a guided tour of the cellars of the pub, including a room that was used as a holding cell for prisoners, before being taken up a narrow flight of stairs into court - yes, the pub has a long and chequered history.

The best sight was the racks of beer casks, all being kept at an optimum temperature by a modern air monitoring system. Also down in the depths was the remains of a bar area that has not seen the light of day for 20 years.

On our way back to the bar John informed us that he has plans to reopen the subterranean bar area (after a refit of course). He also plans to introduce a real cider to the bar and a Belgian beer to the portfolio.

We would like to thank John and his wife Linda for a wonderful evening and the great buffet they provided.



Pictured here is Beverley Rae presenting licensees John and Linda with their certificate.

Andy Jenkinson

The award for the Summer Pub of the Season has gone to the Railway, Manchester Road, Broadheath. This Joseph Holt pub is on the list of CAMRA's National Inventory of Pub Interiors because of its unspoilt multi-roomed layout.

It was originally converted into a pub from two cottages when a station was installed on the then existing railway line, hence the strange shape of

the building. The station has long since gone and the line went in the late 1990's when a campaign by locals and CAMRA saved the pub from demolition which left it standing on the edge of a modern retail park. This pub seems to belong to another age, complete with real fires and real ale, Joseph Holt Bitter and Mild.

The landlady, Pam, has been running the establishment for 18 months now and has made great strides in returning this fine old pub to its original glory. It's a little gem, a real working men's pub with an open fire and home made grub at lunchtimes and bed & breakfast facilities should you feel the need to stay over. If you want somewhere that concentrates more on keeping and serving good ale than somewhere that caters for teenagers then this is the place.

The presentation will take place on Wednesday July 18th at 8.00pm and Pam is extending her hospitality to provide a small buffet for those attending.

John Gobbett

The Marstons house, the Railway Inn on Stamford Street, Altrincham has decided to do away with the real stuff and has gone keg. The supply of real ales on a regular basis had dwindled, only being available intermittently.

Festival Time!

During the summer always sees a proliferation of beer festivals. Here are two local ones you should try and get to.

The weekend of Friday July 13th and Saturday 14th has the annual Chorlton Beer Festival at St Clements Church, Edge Lane. This, their 4th, is always good for the interesting cask and continental offerings and there's usually a hog roast. Volunteers are needed, especially on the Saturday evening. Please contact Beverley Rae by Email on bevalitabev@yahoo.co.uk.

Another excellent one is the Glossop Beer Festival on the weekend of Friday August 31st until Sunday September 2nd. It takes place at Glossop Labour Club, Charles Street and coincides with the town's Victorian Weekend, where many folk dress up in period costume. Volunteers are always needed - contact Frank Wood at glossopowl@btinternet.com.

BREWING IN PENDLETON

Part One

There have probably been as many breweries in Pendleton as now exist in the whole of Greater Manchester. What was once a significant industry for the area has long passed from living memory, the last few having closed well over a hundred years ago. Naturally, with such a lengthy passage of time, very little has survived to show that these ventures ever existed. Even with the aid of maps and directories it is difficult to decide exactly where some of the breweries were located, and considerably less easy to unearth any facts about their operation.

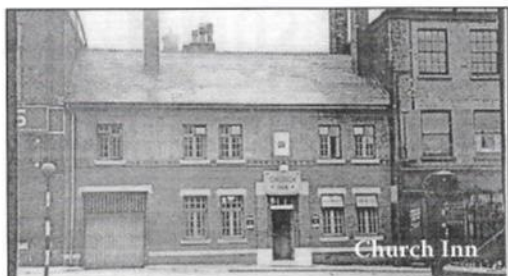
The name 'Pendleton Brewery' was used by at least two separate businesses. William Sumner ran the Dog Tavern on Deansgate, Manchester in the late 1700's and by about 1812 had branched out into brewing at the Pendleton Brewery, which adjoined a nine bedroom mansion called Brunswick Grove. The house and gardens occupied just over 2,700 square yards set in a pleasant location commanding a rural view over the largely undeveloped Pendleton. An 1848 map shows the property next to Bedlam Lane and within a hundred metres of an observatory. This lane eventually became Strawberry Road and a school was built partly on the site of the brewery, to be replaced by houses (opposite to the junction with Gore Street); the railway line between the end of Upper Gloucester Street and Kennedy House on Cheltenham Street now covers the site of the observatory. After William Sumner died an auction was held at the Dog Tavern on 28th November 1817 to dispose of the brewery with other properties. Whether or not the brewery was used again after this date is unclear.

The location of the second Pendleton Brewery can be more easily found as it stood next to the present day Church Inn on Ford Lane. In the 1860s, Josiah Higson, Thomas Broughton and Henry Smith operated in partnership as Higson & Broughton at the Church Inn Brewery. Again, it is difficult to decide if the pub itself was used for the brewing at that time or if separate premis-

es had been built and at what point the name Pendleton Brewery came into use. Josiah Higson left the business in 1868, after which event it became known as Henry Smith & Co. Henry Swales, a Yorkshire man by birth, later replaced Thomas Broughton as one of the partners but the firm continued under the same name until Henry Smith left in 1874. Styled as just Henry Swales, Brewer, a further six years passed before Henry's debts overtook his earnings, pushing him into bankruptcy. Henry Swales continued to be listed in the trade directories until 1887, so it is possible that he was able to satisfy his creditors by using a known inheritance from his father, John. For a single year, in 1889, Dawson Morgan & Co appears at the Pendleton Brewery (Dawson was Mr Morgan's first name).

Just after noon on the 12th April 1831, seventy-four soldiers from the 60th Rifles started crossing the suspension bridge that linked Broughton with Pendleton. They had been on Kersal Moor and were returning to barracks in Salford. Almost all (about 60) had set foot on the bridge when the structure collapsed after the support chains gave way. By an amazing coincidence, the leader of the company was Lieutenant P S Fitzgerald, son of the man who erected the bridge. No fatalities occurred although there were a number of serious injuries. One theory suggested that the soldiers marching in step had caused the structure to vibrate with a destructive frequency. Criticism was also made of the quality of the chains and that the static weight of so many people may have been sufficient to cause the disaster.

Within sight of the ill-fated bridge, across open fields, stood the Suspension Bridge Brewery. Charles Caudwell, occupant before 1835, ended up as a prisoner for debt in Lancaster Castle. He was followed (at the brewery, not the gaol) by Henry Shepherd and Joseph Williamson who parted company in 1836. Shepherd continued to trade on his own until Peter Higgins took over around 1839. In 1851, the brewery was advertised with immediate possession at a moderate rent. A small house with a garden also went with the property but there is no evidence that anyone continued the brewing. The brewery stood



roughly behind the old Condren Club on Broughton Road (once part of Ford Lane and now Broughton Road East). Bowker & Co was unusual in being run by three females of the family; Ann, Elizabeth and Martha. The trio took over sole operation of the Bank House Brewery when Samuel Bowker retired in 1839. There is no indication that the enterprise continued after the early 1840s and the address was recorded only as Pendleton. A substantial building called Bank House stood on Ford Lane so it is possible that the brewery adjoined the house, in the same way as the brewery at Brunswick Grove. The similarly named Bank Brewery stood somewhere on Bank Street, off Broad Street. Mary Watkins is listed there for the period 1838 to 1856. She was succeeded by Allan Kinder, followed by Henry Kinder who went bankrupt in 1863.

Alan Gall

BEER MASTERS 2007 - AN UPDATE

CAMRA Greater Manchester Region sponsored a barrel of beer (Marble Best) at CAMRA Oldham Beer Festival as part of Beer Masters - a real ale tasting contest. Entrants had to match their beer tasting skills to an expert panel consisting of Paul Jefferies from Hydes, Richard Bazen from Bazens' in Salford with CAMRA Chair, Matthew Parr, beer orderer at the festival. The eventual winner was Alison Whitaker from Bolton branch, who carried off the CAMRA plaque, beer prizes, plus a free brewery tour of Hydes for up to 20 people, as well as the title of 1st Beer Master 2007.

Dave Hallows

New Oxford



A warm welcome awaits you

Newly refurbished bar

1 Guest Beer - New Oxford Bitter + 5 guest ales

Home cooked food served Mon-Sat 11-6pm

Opening times 12 - 12 everyday

3 Belgian beers on draught at all times

New world bottled beer menu

Quiz night Tuesday

www.thenewoxford.co.uk

*11 Bexley Square, (just off Chapel Street),
Salford Manchester*

Tel: 0161 832 7082



Purveyors of cask
& bottled beers

**Only licensed bar in
Arndale Centre, Manchester**

Open 11 - 6pm

Come and visit us!

YOUNG MEMBERS WORKING SOCIAL AT NANTWICH BEER AND CIDER FESTIVAL



Photo: CAMRA under 30's new members contact Margaret O'Brien

Saturday, September 29 sees the Young Members Working Social taking place. This will be the first Regional Young Members event in CAMRA Merseyside, Cheshire and North Wales Region. Young CAMRA Members from all over the United Kingdom are welcome to attend this event and those from Nottingham and York have already expressed an interest in going.

Working Socials are where young CAMRA Members can get together at beer and cider festivals, staffing for a couple of hours or so, then move on to socialise on a pub crawl before returning to the venue for the evening session and listen to the live music until closing time at 11.00pm.

It is expected we will assemble around 12.00pm (noon), at the CAMRA membership stand allowing time to sign in, have a bit of lunch and afford

staff training to those who need it before the work starts at 2.00pm. We'll be staffing one of the bars until 5.00pm, followed by a mini pub crawl of Nantwich until 7.00pm.

Everyone is welcome to attend this event, so feel free to bring any friends along to enjoy the day. Please be aware that non-members will have to enjoy the festival from the other side of the bar though, as only CAMRA members are allowed to work there. Admission is free before 5.00pm and thereafter a £3 charge for entry. CAMRA members who present their membership card and are not staffing the festival will receive a £1 beer token after 5.00pm.

The festival is being held as part of the Nantwich Food & Drink Festival which takes place at Nantwich Civic Hall, Market Street and is opposite the bus station.

For more information please visit the website at <http://www.nantwichfoodfestival.co.uk>.

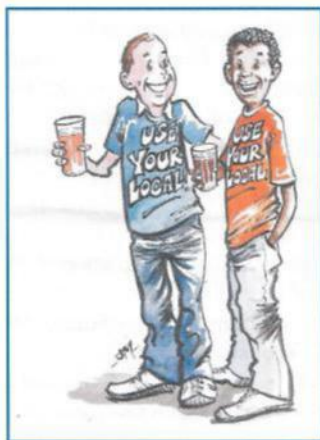
Concessions will be available to those Young Members who sign the guest list between 12.00pm and 2.00pm will receive free entry to the festival all day. Young CAMRA Members who are staffing between 2.00pm and 5.00pm AND signed the guest list between 12.00pm and 2.00pm will receive the following concessions:

- Free entry to the afternoon session of the festival;
- Free commemorative glass;
- Free staff tee shirt;
- Free beer whilst staffing;
- Free entry to the evening session of the festival;
- Free beer during the evening session.

NOTE: Please make sure that you sign the guest list and staff at the appointed times above to receive the full benefits. Please bring your membership card with you. If you require a replacement membership card, please Email membership@camra.org.uk or telephone the Membership Department at CAMRA head office on 01727 876201.

In Greater Manchester, CAMRA under 30's group was formed in 2002. The group, which welcomes young non-members, holds regular socials, crawls, beer festival visits, day trips out and brewery visits. The next event coming up is run by Margaret O'Brien, the new Young Members Contact for CAMRA Stockport & South Manchester. It's a pub crawl around central Manchester on Saturday, August 18th, starting at the Lass 'O' Gowrie on Charles Street at 4.00pm. Halfway point is at the Rain Bar, Great Bridgewater Street at around 7.30pm. See diary for contact details.

There's very much a team around the region for young real ale drinkers. Matt Parr is the Regional Young Members Coordinator, ably supported by Amy Joughin (and both are from CAMRA Rochdale, Oldham & Bury) and committee member, Richard Chambers. Both Kim Walton and Tim Jackson are Young Members Contacts for CAMRA North Manchester. Tim is also CAMRA Student Liaison Officer. For future under 30's events email camrau30.manchester@gmail.com for information about how one can get oneself on the under 30's messenger site.



HITTING YOUR TARGETS.... EVERY TIME.

For professional advertising sales and advice across the following media platforms:

- Magazines and Programmes
- Banners
- Event Sponsorship
- Multi-media / New-media

Contact Neil Richards MBE on

01536 358670



contact 01783 751286 | www.lando-design.co.uk

creative
branding
solutions

Brand Creation & Management | Print Management | Tailored Marketing Campaigns

WHERE WE GO AND WHAT WE DO THE BRANCH DIARY

North Manchester

JULY

Wed 4: USA Crawl in Manchester - Unicorn, Church Street, 7.30pm; Sinclair's Oyster Bar, Cathedral Gates, 8.30pm; Sir Ralph Abercromby Inn, Bootle Street, 10.00pm.

Sat 7: Independents' Day Treasure Hunt - Start at Marble Arch Inn, Rochdale Road, Manchester, 12.00pm.

Wed 11: Rochdale Canal Crawl - Jolly Angler, Ducie Street, 7.30pm; (intermediate stops at Rembrandt Hotel, Sackville Street; Peveril Of The Peak, Great Bridgewater Street) Rain Bar, Great Bridgewater Street, 8.45pm; (intermediate stop at Britain's Protection, Great Bridgewater Street) Knott, Deansgate, 10.00 pm.

Wed 18: Branch Meeting - New Oxford, Bexley Square, Salford, 8.00pm.

Wed 25: Out of Branch Area Social - Ashton Arms, Clegg Street, Oldham, 7.45pm. First Buses 82, 83 from Piccadilly (frequent). Northern Trains from Manchester Victoria, depart 1907; Return from Oldham Mumps depart 2219, 2319. **Sat 28:** Visit to Facer's Brewery - Arriva Trains Wales depart Manchester Piccadilly 1016, arrive Flint 1138. Return journeys depart Flint 1522, 1634, then hourly - possible stop at Chester on way back - depart 1753, 1853, 1953, 2056 to Manchester. Price £4 - contact Social Secretary at philip.booton@britishcouncil.org for details and to book a place.

AUGUST

Wed 1: Winton Social - Ellesmere, King William Street, 8.00pm. Note earlier time, as Egerton, Worsley Road, has no real ale.

Wed 8: Combined Award for 21 Years in Good Beer Guide and Long Service - Jolly Angler, Ducie Street, Manchester, 8.00pm.

Wed 15: Branch Meeting - Hare & Hounds, Shudehill, Manchester, 8.00pm.

Sat 18: CAMRA Under 30's Group Pub Crawl Around Central Manchester - Lass 'O' Gowrie, Charles Street, 4.00pm; Rain Bar, Great Bridgewater Street, 7.30pm. (Halfway point). Non members welcome, contact Margaret O'Brien on 07981 756720 or Email

Margaret84@yahoo.co.uk.

Wed 22: Four 'Crowns &' Crawl in Manchester - Crown & Anchor, Hilton Street, 7.30pm; Crown & Kettle, Oldham Road, 8.15pm; Crown & Cushion, Corporation Street, 9.00pm; finish at Crown & Anchor, Cateaton Street, 9.45pm

Wed 29: Lower Prestwich and Heaton Park Crawl - Ostrich, Bury Old Road, 7.30pm; Woodthorpe Hotel, Bury Old Road, 8.15pm; Friendship, Scholes Lane, 9.15pm. Bus 135 (frequent), Metrolink Tram to Heaton Park station.

SEPTEMBER

Sat 1: Social at Glossop Beer Festival - Glossop Labour Club, Chapel Street, Glossop, 12.00pm onwards. Contact social secretary at philip.booton@britishcouncil.org for further details.

Wed 5: Social - Kings Arms, Bloom Street, Salford, 8.00pm.

Wed 12: University/Oxford Road Crawl - Sand Bar, Grosvenor Street, 8.00pm; (possible look into Salutation, Higher Chatham Street) Odder, Oxford Road, 8.45pm; Font, New Wakefield Street, 9.15pm; Lass 'O' Gowrie, Charles Street, 10.00pm.

Fri 14 - Sat 15: Bury Round Table 2nd Annual 'SEPTEMBURY' Beer Festival 2007, Bury Sports Club, Radcliffe Road, Bury.

Trafford & Hulme

JULY

Thu 5: Branch Meeting - Orange Tree, Old Market Place, Altrincham, 8.00pm.

Sat 7: Branch Social in Cheshire - Railway, Heatley, 1.00pm (Warrington Borough Transport Bus 5, 1228 from Altrincham Interchange); Barn Owl, Warrington Lane, Agden Wharf, 2.00pm; then onwards...

Wed 18: Pub of the Season Presentation - Railway, Manchester Road, Broadheath, 8.00pm. (Small buffet will be provided).

AUGUST

Thu 2: Branch Meeting - Old Market Tavern, Church Street, Altrincham, 8.00pm.

To be confirmed.

Sat 18: Chorlton Social - Hilary Step, Upper Chorlton Road, 1.00pm; finish at Jackson's Boat, Rifle Road.

Thu 30: Ashley Social - Greyhound, Cow Lane,

8.00pm. Northern Trains depart Altrincham 1851, 1951 (journey time 5 minutes - please note that Ashley is a request stop); Return from Ashley 2148, 2334.

SEPTEMBER

Thu 13: Manchester City Centre Social - Font, New Wakefield Street, 8.00pm; Odder, Oxford Road, 9.00pm; Salisbury, Wakefield Street (to finish).

Sat 15: Visit to Hydes Brewery, Moss Lane East, Manchester for an afternoon talk about their operations by Paul Jefferies including a session on beer tasting sampling Hydes beers.

LOCAL AND REGIONAL BEER FESTIVALS LISTINGS

(not necessarily endorsed by CAMRA)

JULY

Wed 11 - Sun 15: 30th Derby Summer Beer Festival, Assembly Rooms, Market Place, Derby.

Thu 12 - Sun 15: Hawkshead Brewery First Beer Festival, Beer Hall, Mill Yard, Staveley.

Fri 13 - Sat 14: 3rd Chorlton Beer Festival, St Clements Church, Edge Lane, Chorlton.

Fri 13 - Sun 15: Beer and Live Music Festival, Duke Of York, Stockport Road, Romiley.

Sat 14: Spitting Feathers West Cheshire Beer Festival, Spitting Feathers Brewery, Common Farm, Waverton, near Chester.

Wed 18 - Sun 22: Star Beer Festival, Star, 7 Albert Street, Lockwood, Huddersfield.

Fri 20 - Sun 22: Summer Beer Festival, White Horse, Kings Meaburn, near Appleby in Westmoreland.

Thu 26 - Sat 28: North West Beer Festival 2007, Sutton Leisure Centre, Elton Head Road, St Helens.

Thu 26 - Sun 29: July Beer Weekend, Black Horse, 72 Redearth Street, Darwen.

Fri 27 - Sat 28: Beer By The Bridge, Brindley Theatre and Arts Centre, High Street, Runcorn.

Fri 27 - Sun 29: Summer Beer Festival, Ship Inn, Wheat Lane, Lathom, near Burscough.

Fri 27 - Sun 29: 3rd Anniversary Beer Festival, Junction, 1 Baildon Road, Baildon.

Sat 28 - Sun 29: 3rd Summer Festival - Dog Inn, Well Bank Lane, Peover Heath, near Knutsford.

AUGUST

Fri 3 - Sun 5: 6th Annual Beer Festival, Village Hall Memorial Club, Mobberley.

Thu 23 - Sun 26: August Beer Weekend, Black Horse, 72 Redearth Street, Darwen.

Fri 24 - Mon 27: 5th Annual Beer Festival, Ship Inn, Wincle, near Macclesfield.

Fri 24 - Mon 27: August Bank Holiday Weekend Mini Beer Festival - Bulls Head, 356 Warrington Road, Goose Green, Wigan.

Thu 30 - Sat Sep 2: Furness Beer Festival 2007, Coronation Hall, County Square, Ulverston.

Fri 31 - Sun Sep 2: 4th Glossop Victorian Weekend Beer Festival - Glossop Labour Club, Charles Street, Glossop.

SEPTEMBER

Thu 6 - Sat 8: 8th Sandgrunder Beer Festival, Southport Arts Centre, Lord Street, Southport.

Thu 6 - Sun 9: 3rd Silloth Music & Beer Festival, The Green, Silloth-on-Solway.

Fri 14 - Sat 15: 1st Lytham Beer Festival - Lower Pavilion, West Beach, Lytham St Annes.

Thu 20 - Sun 23: Equinox Beer Festival - Black Horse, 72 Redearth Street, Darwen.

Castle Hotel

66 Oldham Street,
Manchester, M4 1LE

Selling NINE Robinsons Real Ales:

*Old Tom, Unicorn, Oldham Bitter,
Wards Best Bitter, Double Hop, Old Stockport
Bitter, Hatters Mild, Dark Hatters,
and Cumbria Way*

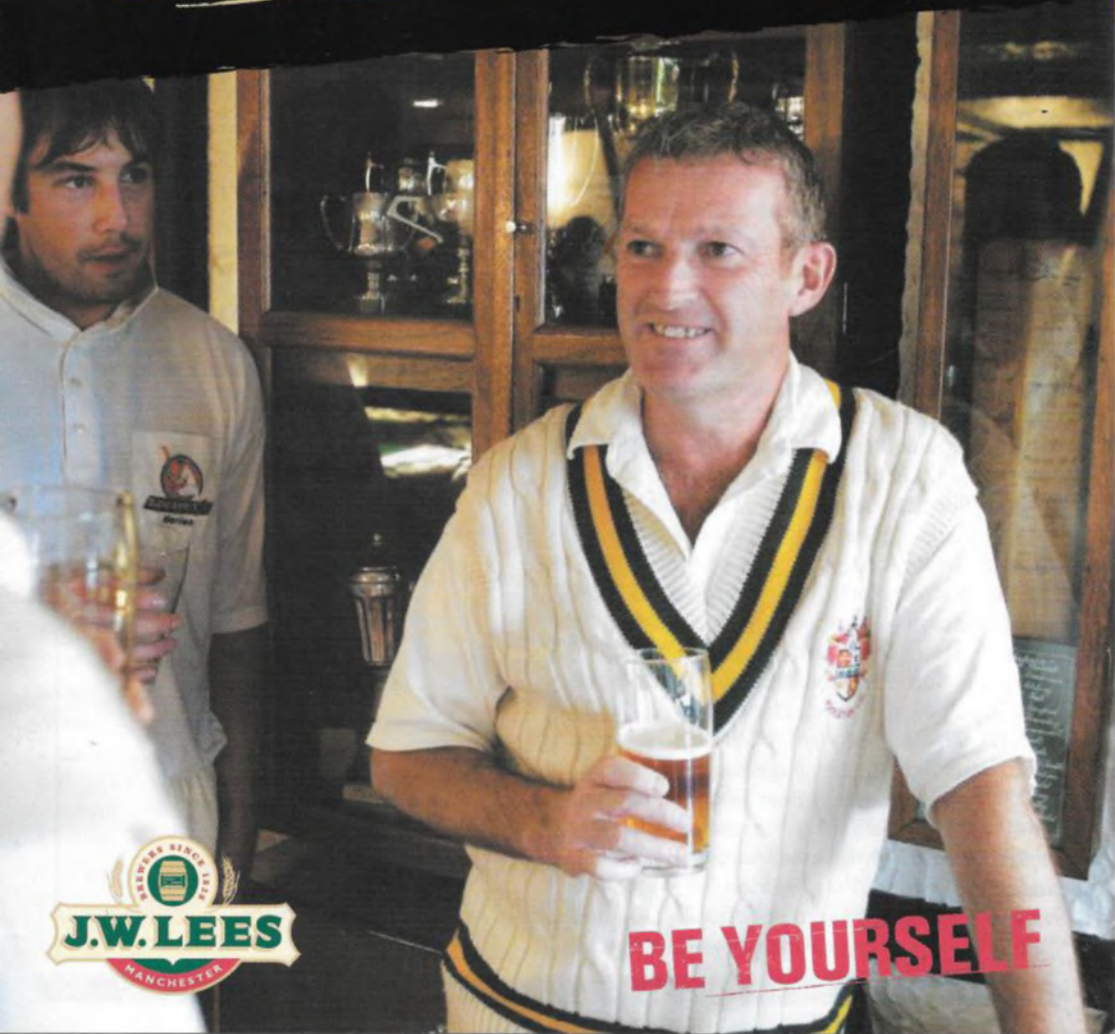
Regular FREE live music

*Anything from acoustic to
hard core punk....*

**Stunning water features
throughout the pub!!**

*Damien and the staff wish
everyone a warm welcome*

YOUR LOCAL BEER AT YOUR LOCAL PUB



BE YOURSELF