

FREE
PLEASE TAKE A COPY

JULY/AUGUST 2008
ISSUE 9



DRINKER'S ALEMANAC

Covering Manchester, Salford and Beyond

IS DRINK UNDER THREAT?



SEE PAGE 4

Produced by the North Manchester Branch of the CAMPAIGN for Real Ale
www.camra.org.uk/nmanchester

The Vale Cottage Inn

REGIONAL PUB OF THE YEAR 2006

A traditional English pub where we value friendly service and offer our customers quiet and comfortable surroundings

Extensive Lunch Time Menu Available 12 to 2:30 Daily

Traditional Sunday Lunches Served 12 to 2:30

Quiz nights: Tuesday - General Knowledge

Thursday - The Best Music Quiz Around

Fine Cask Ales

(Timothy Taylor's Landlord,
Theakstons, Bombardier, Guests)



Telephone: 0161 223 2477

Kirk Street, Corton, Manchester M18 8UE

CAMRA Good Beer Guide 2007 We're in it!



The Brewery, Empire Street,
Cheetham, Manchester, M3 1JD

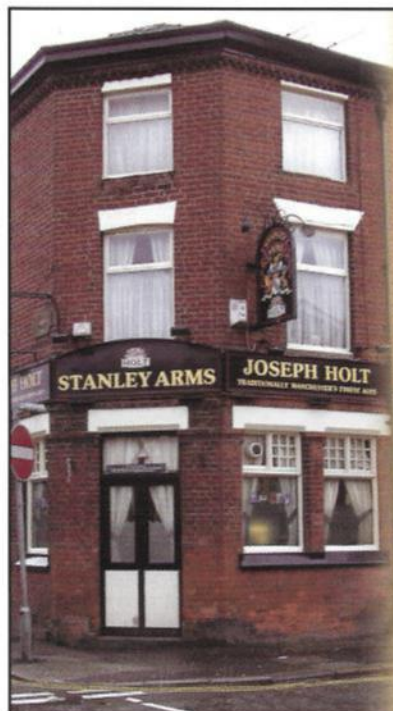
www.joseph-holt.com

Tel: 0161 834 3285

Fax: 0161 834 6458



For those who know Bitter



Stanley Arms

Liverpool Road, Patricroft, Manchester
0161-2857100

Open 12 - 11 Every Day
Bar Snacks available

2 Real ales

**Neil Richardson
Award Winner 2008**

*Nigel, Linda offer a
warm welcome to
everyone!*



DRINKER'S ALEMANAC

FROM THE EDITOR'S CHAIR

REAL ALE ON THE REVIVAL TRAIL

For those people who would have us all believe that there is no future in real ale and that cask is in decline, look again! The evidence is plain for all to see, with the advent of more and more cask ale breweries and pubs showing an increase in output and demand for the real stuff.

Here in the Northwest the future looks rosy with the resurgence. Witness some of the local and regional beer festivals, many of which fill to near capacity and have no beers or very little left at the end of their sessions. And more and more pubs are stocking not only one, but sometimes two or even three guest beers; this alongside the one or two regular ales they have as well. The cask ale market continues to grow, and long may it be so.

STOP PRESS - BREAKING NEWS

Just as we were going to press, news reaches us that there is a new micro brewery for Salford. Named Shedded Brewery, it was about to open imminently, and the first beer out should be A Bitter Justice at 4.2% abv.

Also, we hear of further developments at the long closed Beer House on Angel Street in Manchester. This is set to reopen with three real ales promised. There will be a name change to the pub though - to The Angel, named after the street it is situated in.

Contacts

Editor: Steve Smith.

Email: Manpubs2006@aol.com.

Assistant Editor: Dave Hallows.

Email: davehallows2002@yahoo.co.uk.

Your views and any correspondence should be sent to the editorial address: c/o 3 Routledge Walk, Harpurhey, Manchester M9 4DT or to the Email addresses above. Copy date for Sep/Oct Issue: Friday 15th August. Estimated publication date for ISSUE 10: Monday 8th September.

Subscription Rates

£2.00 for mailing of six issues should be sent to Roger Hall, 123 Hill Lane, Blackley, Manchester M9 6PW. Please make cheques payable to CAMRA North Manchester.

Contributors to this Issue: Roy Bullock, Pete Cash, Dave Hallows, Andy Jenkinson, Stewart Revell, Steve Smith, Ralph Warrington.

Photographic Credits: Dave Hallows, Andy Jenkinson, Stewart Revell, Steve Smith.

Trading Standards

Should you wish to make a complaint concerning certain aspects of service regarding the pub, firstly it is better to take it up with the management of the establishment concerned. If however the matter cannot be resolved you may wish to contact your local Trading Standards office.

These are located as follows:

Manchester City Council -

1 Hammerstone Road, Gorton, Manchester M18 8EQ. Tel: 0161 234 1555. Fax: 0161 957 8379. Email: tradingstandards@manchester.gov.uk.

<http://tradingstandards.gov.uk/manchester>.

City of Salford - Turnpike House, 631 Eccles New Road, Salford M5 2SH. Tel: 0161 925 1346. Fax: 0161 925 1199.

www: <http://www.salford.gov.uk/>

Disclaimer

Readers are reminded that the editorial team or the Campaign for Real Ale may not necessarily share the views expressed by the contributors. Contributions are always gratefully received but may be edited without altering the meaning and certain grammatical errors, if spotted in time, may be corrected. As with any free publication, space is at a premium and publication cannot always be guaranteed. All articles are © Campaign for Real Ale and may be reproduced if source acknowledged.

IS DRINK UNDER THREAT?

The Royal College of Physicians has recently launched a lobby group called the Alcohol Health Alliance UK. This elitist group will campaign for increased tax on alcohol; a ban on alcohol television advertising before 9pm, and in cinemas (apart from those showing 18-rated films); warning labels on alcohol; and a reduction on the drink-driving limit to 0.5g and near zero for new drivers.

While CAMRA supports responsible drinking along with the government's recent strategy of education and advice, rather than the use of Draconian methods, since May though, the education and advice has gone very much in the face. Billboards announce the recommended daily limit endorsed by the NHS. Just over one pint of beer, no stronger than 3.8% abv for women, and one and a half to two pints of the same for men. Of course, it all depends on each individual's metabolic rate. These figures are in fact plucked out of the air. They are so low that many other European countries that have higher alcohol consumption, have higher recommended daily rates – Spain, France, Italy, Greece, etc. have daily higher limits. Of course, this again depends on lifestyle and diet. For instance in Spain, it is commonplace that on the table with grapes, paella and wine, there are soft drinks as well for all the family. Here in the UK one would not see the soft drinks for everyone in the same way placed on the table.

Recently, in the Northwest there has been a large questionnaire called "The Big Drink Debate." It claims to reach a potential of 650,000 around the region that has the second highest rate for drink-related illnesses. It promises that it will result in "future generations to enjoy longer, safer and healthier lives." Done through the North West Centre for Public Health at Liverpool John Moores University, there are nine multi-choice questions, which are very much across the board.

Let's wait to see the results of this, but, again it is elitist and prejudged.

For instance, it asks "In general, where does most of the alcohol you drink come from?" The first of six choices is the "pub, bar or club". The "supermarket" comes second on the list. So, is the pub the first on a "hit list" by this group, aided by a group named as Ourlife, a movement for social change? The only question that is remotely favourable to alcohol is when you are asked "What are the good things about alcohol?" though the last two answers of that are "it relieves boredom" and "It helps me to forget my problems." Well, most of us have cried over a pint, but now that is political!

And that is the crux of it. Is it absurd even to suggest that there is an elitist element in the UK that wants to see a road to prohibition?

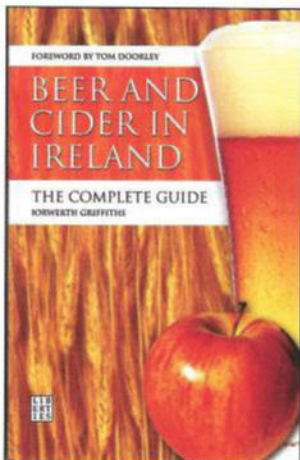
Dave Hallows



Two forlorn pints, half consumed, outside a country pub ... would these have to be left behind, once having reached the proposed limits?

BEER ON THE BOOKSHELF

BEER AND CIDER IN IRELAND: The Complete Guide by Iorwerth Griffiths, Liberties Press, 174 pp paperback, £7.99.



If you ever go across the sea to Ireland, like I do quite frequently, then you will probably need a guide to the drinking establishments.

However, although this is the latest and most up to date offering, it is not a pub guide in the true sense, more

essentially a synopsis of what is available and where to find it. Presented in a handy pocket sized format and launched at The Porterhouse in Dublin, this book covers a multitude of brewing operations. Every brewer and cider producer in the country is covered, both north and south, and arranged in alphabetical order.

We are introduced to A Short History of Brewing in Ireland, followed by a chapter on Brewing Beer. There is a useful map showing the locations of each of the breweries, cider makers and pubs specialising in beers in Ireland, then come the entries. A readable format is presented, with most of the illustrations in colour, albeit the serif typeface used is a bit small; this is dependent on the size of the book, no doubt.

The breweries are given three to six pages of coverage, a history of each company, with a summary of availability and visiting arrangements. At the end of the entries comes a further chapter on breweries which may be coming soon.

It then goes onto a History of Cidermaking in Ireland. And it's good to see that

Bulmers/Magners are listed together at the same address. For, would you believe, Magners is the name given to Bulmers cider which is available in the UK! Following these entries are chapters on New Ciders and Appreciating Beer and Cider; Best Beer Bars and Pubs in Ireland; a Beer Festival Calendar; Best Imported Beers, ending with a Glossary, a selection of brewing terms.

This is the first book that covers all the Irish beers and ciders, written by a Welshman, and an interesting book in which to dip in and out of. It's certainly worth taking with you if you intend visiting the Emerald Isle.

Available from Beer In Print, Long High Top, Colden, Heptonstall, West Yorkshire HX7 7PE. Telephone 01422 844437.

New Oxford

*A warm welcome awaits you at the
2008 Pub of the Year*

Bazen's Flat Bac 4.2% plus 10 guest ales
7 Belgian & 4 German beers on
draught at all times

*New food menu available Mon - Sat 12 - 8pm
Sunday lunch and light bites 12 - 6.30pm
Thurs night - curry night*



New world bottled
beer menu

Tues night - quiz night

Nominated GBG 2008
www.thenewoxford.co.uk

11 Bexley Square, (just off Chapel Street),
Salford Manchester
Tel: 0161 832 7082

SPOTLIGHT ON TWO CITIES

NEWS ON THE BREWS

Bazens'

In their Salford History Series of beers, the May offering was Cooke St IPA, commemorating the Threlfall's Cooke Street brewery, whose listed tower remains extant to this day.

At the recent New Oxford Summer beer festival there were three interesting Bazens' beers - Balloon Beer (4.1% abv) and WWW (4.2% abv); these were joined by a distinct bitter ale named Bazens' 57 (4.0% abv). This is to celebrate 57 different beers brought out by the Salford micro, since the New Oxford opened its doors. It is no coincidence that the beer is so named after a certain brand of baked beans, but the similarity ends there; albeit the beer is amber-orange in colour. It has a nicely dry bittered taste with fruit, hints of flowers and orange peel, plus a strong fruity aroma and sweetness in the aftertaste. This follows the Light Ox and Dark Ox, both milds, brewed to celebrate the New Oxford's crown of being the CAMRA North Manchester Pub of the Year.

The June beer in their "Old Salford Series" will be WWW (4.2% abv), which is a triple play on the letter "W" - perhaps. As well as "World Wide Web, it can also represent three cricketers Worrell, Weekes and Walcott; and also for the bygone brewers Watson, Woodhead and Wagstaffe (established in the 1890s), whose brewery tower on Irwell Street can still be seen from the front door of The New Oxford pub.

The beer for July is Old Punch Ale, at around 4.8% abv; the name is taken from a beer of the same name brewed in 1831 to celebrate the bicentenary of Salford's Charter.

Boggart Bulletin

For the 'Wild for Mild' challenge in May, Moston's own micro, Boggart Hole Clough have continued with what could now be a renaissance for the light mild, as the brewery have done a special one at 3.5% abv. More and more breweries are now bringing back this style of mild.

New out is a yet unnamed pale 4.3% abv beer. There's always something happening in the

Boggart heartland and more new beers are always being brewed that it's hard to keep up with ...

Holt's Corner

The Roebuck Hotel, Church Street, Flixton, has now reopened after being completely refurbished since a very bad fire some 12 months ago. Many of their original established and previous customers have now returned and trade is doing very well.

Also recovering from the throes of a similar fate, The Broadway on Nuthurst Road at New Moston is scheduled to reopen in mid-July.

The Stockport suburb of Reddish, now have a Holt's hostelry, the brewery having opened the Grey Horse on Broadstone Road as one of their tied estate outlets.

Planning permission has been granted for the alteration and refurbishment of the Golden Lion on Manchester Road at Clifton. The pub is due to reopen around the end of July, the date being determined by the progress and completion of the work involved. At one time, it was suggested that a competition would be staged for a change of name for this pub, but it is now understood that its present name will remain. The Golden Lion will be an up-market type of Holt's outlet, with meals being available and beer prices higher than some of their other outlets.

The New Market and Lord Nelson, both on Bolton Road at Pendlebury continue to offer their more standard beer prices.

stewart.revell@gmail.com

From the Marble Vaults

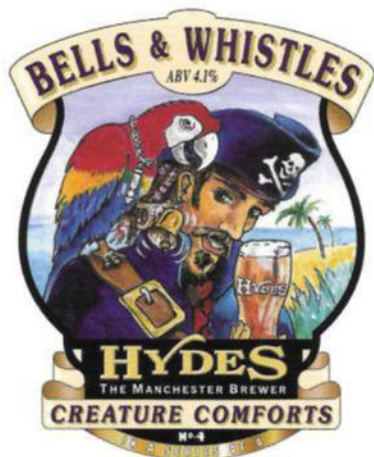
And the awards just keep on coming ... the brewery has yet again scooped another beer of the festival award. This time it was at the recent Stockport Beer & Cider Festival, for their Festival Special 1280. This one was brewed by Warren at 1041 og (4.2% abv), dry and very hoppy.

Summer Marble should be making the rounds again soon, if not already out. Pale and hoppy, containing New Zealand hops.

A new food menu has been introduced and also has a list of recommended beers at the Marble Arch Inn on Rochdale Road.

Hydes

The latest beer in their craft range for July and August (number four in the Creature Comforts series) will be Bells & Whistles, a 4.1% abv brew, golden and straw coloured with a zesty, grapefruit floral taste and a citrus aroma. Perle Pale Ale malt and Styrian Goldings hops add to the flavour, this light refreshing beer having everything you'd expect from a fine ale.



The Coach & Four, Wilmslow, held a mini beer festival over the weekend of 20th June, from Friday to Sunday, celebrating with their own limited ale, Wilmslow Wobbler; not for the light-hearted this one, and specially brewed at 6.5% abv. Featuring a further 14 beers on offer, licensee Roy Timmins commented: "I really looked forward to our first beer festival at the pub. This is a quality pub where people enjoy real ale, so it was great to offer our customers such a fantastic range of beers over the weekend." Other attractions over the course of the weekend included live music on the Friday and Saturday nights, as well as a special curry night on the Friday. Entrance was free.

NATIONAL WINTER ALES IS ALIVE AND WELL

Following Steve Prescott's announcement to stand down as organiser of the National Winter Ales Festival (NWAFF), yet another successful event in 2008, the hunt was on to find a willing replacement.

News has reached us that one has been found! Graham Donning, a long time activist for CAMRA's Furness Branch in Cumbria, put his name forward. As Graham says, "No sooner had I thrown my hat into the ring, before you know it, hey presto, or should I say Prescott, I am it."

Graham retired from his Civil Service career in February 2006 and following his decision not to stand for re-election as a local Labour Councillor from May 2008 he decided to retire, not to the country, as most sensible people would, but to the city; in fact the City of Salford.

Graham has been active in CAMRA for many years attending many of their AGMs (as he still calls them!) and other national events. Having decided to move to Salford and seeing the roll of Festival Organiser of the NWAFF become vacant he decided that it was time to get involved again. Having stood down as Chairman of the Furness Branch in March 2008, he felt he had had enough time away from CAMRA activity. So he's decided to take on the mantle of the organiser's duties.

"Since putting my name forward and having been accepted by the National Executive" said Graham, "I have been a bit busy, too! A Working Party has been set up and our first meeting was held on 31st May in Stockport. We have a logo in place, a web site is being organised and I have set up a Yahoo group:

(<http://groups.yahoo.com/group/NWAFF-CAMRA/>), for anybody who may be interested in keeping up to date.

"A series of dates for future meetings has been arranged and there is to be an open meeting on Saturday 5th July, at 3.00pm in the Crescent, Salford. Any CAMRA member is welcome to these meetings. We are also hoping to get as many local CAMRA members volunteering for this prestigious North Western event as possible; after all, CAMRA is nothing without them."

The dates for the 2009 event are as follows: setting up/taking down from Sunday 18th January through to Monday 26th January.

The festival is open to the public from Wednesday 21st January until Saturday 24th January inclusive.

Graham can be contacted at g_donning@yahoo.com or via the Yahoo group.

CASTLEFIELD HOTEL UPDATE



The YMCA's Castlefield Hotel on Liverpool Road opposite the Science Museum, is now featuring up to three handpumps. The new permanent beer is from Bazens' of Salford. To start with, this is Flatbac, with their Black Pig Mild to follow. Also, on the last visit were Caledonian Deuchars IPA and Theakston Best Bitter. Plans are to have a beer from the North Shields micro Mordue Brewery.

The bar itself is right by the Y Club sports hall and has just had its first Real Ale and Continental beer festival. One to watch out for is a special brewed by Theakston to celebrate the 160th Anniversary of the YMCA in September. Oh, and yes, the real ale is still at £2 a pint. A snip when you think the bar is just off the affluence of Deansgate! Go and take a look; see you there soon!

The Pendleton area of Salford has, over the years, been decimated by the loss of a considerable amount of its pubs. It now looks as though two more could soon follow. By the end of June, the Woolpack on Belvedere Road may be closed by the time you read this. Known for its entertainment, it will be a great loss for its value of featuring live entertainment; its most significant fact is the loss of another real ale outlet in the area.

Further rumoured, albeit unconfirmed, is that the Flemish Weaver, also on Belvedere Road may be another candidate for closure.

WORSLEY SELECT

Affluence abounds in the ancient suburb of Worsley with three good pubs. The John Gilbert

on Worsley Brow was once a Hardy & Hansons pub, before Greene King took over. But the former brewery still has a presence in this picturesque up market hostelry with Hardy & Hansons Olde Trip along with Greene King IPA and Morland Original Bitter.

On other side of the motorway junction there is the newly refurbished Bridgewater Hotel on Barton Road. This, a large and imposing building, is in the heart of the village. The branch made a visit on the first night of an English Ale Festival, supported by CAMRA, Cask Marque and in association with Wells & Youngs Brewery to celebrate Saint George's Day back in April. It was projected to last over a month – on the night Bank Top Flat Cap was on with the sponsors' beer, Wells Bombardier.

A planned 30 or so English real ales were due on over the time of the festival. The décor is now Art Deco and very stylish with background music for a more mature family style clientele. There are usually one or two Bank Top beers as regulars, too.

Just across from here is the newest pub to Worsley - the Barton Arms on Stable Fold - all on one level it is again up market with, at the time of our visit, Boddingtons Cask, Black Sheep Best Bitter and Timothy Taylor Landlord. This pub, too, holds beer festivals here. All looks good in select Worsley at present.

AROUND THE REGIONS

Trafford Tales

PUB OF THE YEAR

The Trafford & Hulme Branch of CAMRA recently voted the Old Market Tavern, Church Street, Altrincham as their overall Branch Pub of the Year winner.

Since licensee John Glover adopted a "hands on" approach to running the establishment, with a commitment to looking after the cask ales, the pub has become this branch's premier real ale outlet in the area.

When Janet Glover, the manageress, was told of the award she was naturally thrilled. The pub now qualifies to go forward into the regional

selection for this award and the branch wishes them well in their endeavours.

The award took place on Saturday, 21st June.

Andy Jenkinson

SUMMER PUB OF THE SEASON

The Pub of the Season award by Trafford & Hulme for the Summer period has been given to the Swan With Two Nicks on Park Lane at Little Bollington, just across the county boundary into Cheshire.

The presentation will take place on Wednesday 16th July at around 8.00pm.

Throughout March and April, a brief and bold venture saw the Old Cock on Chester Road at Stretford open and selling real ale. Run by John Rogers (Johnno) late of the Marble Arch Inn, the customer potential was never forthcoming and the pub has now closed again.

The Beech, Beech Road, Chorlton has had a 4.00pm closing order put on it by police. This is

following the pubs' troubled times.

Also on Beech Road, Marmalade café bar has discontinued its real ale.

Real ale continues to be available at the Horse and Jockey on Chorlton Green and the quality is rather good.

Swan With Two Nicks



Old Market Tavern



SHELTER THE SMOKER - ONE YEAR ON

From the 1st July 2007 one saw, perhaps, the biggest upheaval to the pub trade in England - the introduction of a total smoking ban in all public places. It was, and in some cases still is, but as any publican will tell you - this restriction is not the only threat to the trade; there's cheap supermarket booze by the case load, revaluation of business rates, the health lobby and the Chancellor's policy of across-the-board increases of 2% above inflation for the next four years.

Around the suburbs, when the ban was announced it was noticeable that mainly pubco licenses were going to the wall, well before the 1st of July. To some extent this has continued with pubs between the towns and cities in the region, either just ticking over, closed or closed and boarded and/or up for sale.

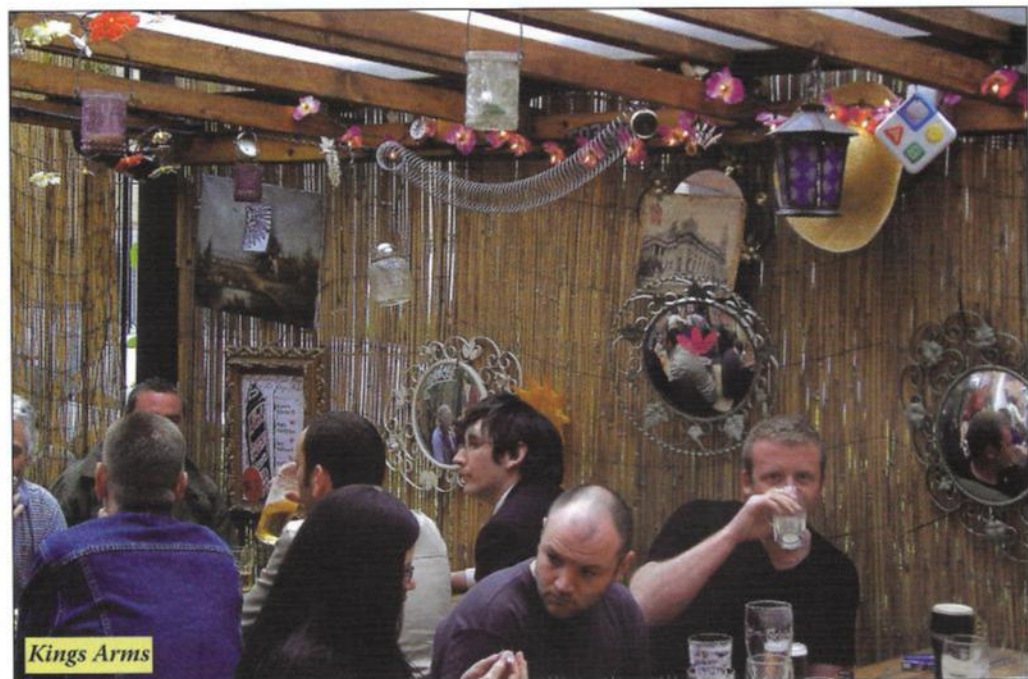
On the other hand, there are exceptions where trade is holding out; giving a lot of good evidence that people will still go to a good pub. CAMRA

plays a part in this, but credit is due to the pub-going public.

A lot of pubs have adjusted and have given the smoker outside facilities that have been a practical solution and, at times, attractive to the smoker who likes a drink in the company of others, which is promised by a pub.

The Kings Arms on Bloom Street in Salford have used their side yard to make it a smoker's Bohemian oases of ornaments, mirrors and an iron range as a source of heat. And very popular it is, too.

Out in the suburbs is the Star Inn on Back Hope Street situated near the Cliff in Lower Broughton, with a shelter that is as tucked away as is the pub itself with comfortable seating. Again, it's in the yard of the pub.





Top of the range is the up market Friendship on Scholes Lane in Prestwich with their superior state of the art modernist heated smoking shelter replete with hanging baskets, pine seating and tables, plus outdoor plasma TV screening Sky Sports football (you can see this in its own security box!)

Some pubs have got round the complexities of a shelter attached to the building by providing those gargantuan parasols that can be put up and taken down as required. But on a more sober note, the pubs that are suffering are the ones with no space outside other than in the street.

The passer-by can see a group of smokers huddled around the wall-mounted street ashtray in all weathers with a certain Local Authority using the Environmental Health Law to restrict the numbers of patrons, who smoke directly out in the street with the threat of a fine to the publican, who has no chance of overseeing it, particularly when busy! Very unfair, that it is.

Dave Hallows

TRADITIONAL BEERS for MODERN TASTES



Pacific Bitter 3.8% Blue Bullet 4.5%
 Flatbac 4.2% (Beer of the Festival, Stockport 2003 & BIA Bronze 2004)
 Black Pig Mild 3.6% (Bronze for Mild, CBoB 2003)
 Knoll Street Porter 5.2%
 (Gold - Porters & Stouts, CBoB 2006,
 Silver - Porters & Stouts, SIBA North Beer Competition 2006)
 plus seasonals & monthly specials*

For more info, please see

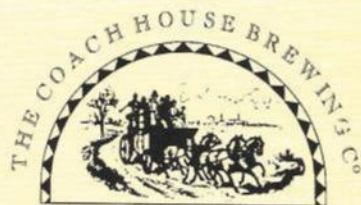
www.bazensbrewery.co.uk,

phone 0161 708 0247

or email bazensbrewery@mac.com



* All beers subject to availability



**TRADITIONAL
 HAND-CRAFTED CASK
 CONDITIONED
 FINE ALES**

**FROM CHESHIRE'S AWARD
 WINNING BREWERY**

**COACH HOUSE BREWING
 COMPANY LTD
 WHARF STREET, HOWLEY
 WARRINGTON CHESHIRE**

TELEPHONE 01925 232800

"RUNNERS AND RIDERS" AT THE NATIONAL MILD DAY CRAWL 2008



On 3rd May, a small but enthusiastic band of drinkers assembled in Manchester for the start of this annual event. Commencing at the Marble Arch Inn on Rochdale Road, the Marble Brewery had produced a formidable 6.0% abv mild, **Marble Well Cut**. Next it was a short way to the Smithfield on Swan Street, still a quality beer outlet under its new management. We sampled the ever present **Robinsons Dark Hatters** at 3.3% abv, and erroneously listed as "Dark Mild" in CAMRA's 2008 Good Beer Guide.

Just across the other side of the same street is the Bar Fringe, where we were able to taste the new Prospect Brewery's **Prospect Nutty Slack**. Over the road junction on the corner of Oldham Road with Great Ancoats Street is the imposing Crown & Kettle where the expected tippie of Copper Dragon Black Gold did not alas materialize on this day. Nearby on Oldham Street is the Castle Hotel, where both the light and dark versions of **Robinsons Hatters**, both at 3.3% abv can be had. Quite a walk now (some 5 furlongs) to the Grey Horse on Portland Street for their **Hydes Mild** at 3.5% abv; then it was on to the Lass 'O' Gowrie on Charles Street to sample the **Titanic Mild**, a 3.5% abv brew. Across Oxford Road and tucked away by the railway arches on New Wakefield Street is

the **Font**, a young persons' outlet which flies the flag for real ale and provided us with **Allgates Mild at Heart**.

Out and under the railway, over Whitworth Street West and across the top gates of Lock 91 on the Rochdale Canal took us to the **Rain Bar** on Great Bridgewater Street where we drank **Lees Mild**, which has now been renamed **Brewer's Dark**, yet another 3.5% abv brew, which has undergone a "darkening by stealth" in recent years.

Another 4^{1/2} furlongs took us to the **Ape & Apple** on John Dalton Street where we had the handpulled **Joseph Holt Mild** at 3.2% abv. Sales of this excellent beer have been badly hit in some Holt's houses by the introduction of the keg "Joseph Holt Black". The longest leg of the crawl took us into Salford and **The New Oxford** on Bexley Square where there were three milds to be sampled; **Dunham Massey Light**, **Dunham Massey Dark** and **Bazens' Dark Ox**, 4.0% abv, which was to be joined in a few days' time by **Light Ox**, again at 4.0% abv, brewed to celebrate the pub winning the North Manchester Branch Pub of the Year competition.

A mere 3 furlongs now to the finish, at the **Crescent** on the road of the same name, where we rounded off the day with **Northern Mar'V'lus Mild & Little Valley Midgley Mild**.

In total we had sampled 14 different milds and covered a distance of 28 furlongs (3.5 miles).

Our picture shows the team from the 2007 event, inside the Crescent, with the late Ian Kenny on the far left.

Pete Cash

A PUB IN THE TOWN: THE BULLS HEAD

Although not in our branch area (and why ever not - it's in the city centre, isn't it - but that's a matter of conjecture), this pub has seen a revitalisation in recent years.

Situated across the road from the Fairfield Street entrance to Manchester Piccadilly station on London Road by the junction with Granby Row, it is quite a useful spot if you've time to kill whilst waiting for a train, or travelling by tram.

Some years ago, this was a basic street corner local two roomed boozer, a one time Wilsons house, then passing into the hands of the Burtonwood Brewery near Warrington. Relegated to providing just one cask ale, Burtonwood Bitter, the pub dwindled on over the years, retaining a very low customer base.

Eventually, under the auspices of this established north west brewer, the pub was given a complete

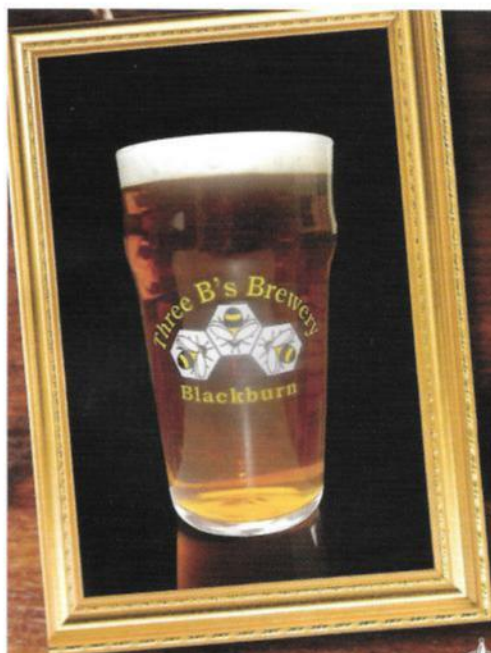
refurbishment, still retaining its tiled exterior, but internally opened out to provide one room. Fitted out with leather seating and raised areas, it became popular with students and travellers alike.

The introduction of further cask ales enhanced its popularity and now having passed into the hands of Marstons its future looks pretty good.

There is now a provision for providing up to five cask ales; two regulars in Marstons Pedigree and Jennings Cumberland Ale, with three guests. This now has to be one of the city's premier real ale outlets and lunchtime food is also available.

Recently the Stockport & South Manchester Branch of CAMRA voted this pub as their Pub of the Month for June.

The Bulls Head, London Road, Manchester



*It's not just a beer
It's a work of art*

Unit 5 Laneside Works, Stockclough Lane,
Feniscowles, Blackburn, Lancashire BB2 5JR

Tel 01254 207686 Fax 01254 201333

Email info@threebsbrewery.co.uk

www.threebsbrewery.co.uk



WHERE WE GO AND WHAT WE DO

THE BRANCH DIARY

North Manchester

Branch Contact, Dave Hallows, telephone: 07983 944992 or Email:

davehallows2002@yahoo.co.uk

JULY

Wed 9: Branch Pub of the Year Presentation, The New Oxford, Bexley Square, Salford, 8.00pm.

Wed 16: Branch meeting, The New Oxford, Bexley Square, Salford, 8.00pm.

Wed 23: Branch Social, Duke Of Wellington, Weardale Road, Blackley, 8.00pm. Buses: 64, 65, 88, 89, 149 along Victoria Avenue.

Wed 30: N/4 Northern Quarter City Centre Crawl, Crown & Kettle, Oldham Road, 7.30pm; Bar Fringe, Swan Street, 8.00pm; (additional call in at Burton Arms, Swan Street); Smithfield Hotel & Bar, Swan Street, 9.00pm.

AUGUST

Wed 6: Bolton Crawl, Sweet Green Tavern, Soho Street, 7.30pm; Barristers, Bradshawgate, 8.15pm; Hen & Chickens, Deansgate, 9.30pm. Trains: Manchester Piccadilly, Manchester Victoria, Salford Central, Salford Crescent to Bolton.

Wed 13: Branch Social, Smithfield Hotel & Bar, Swan Street, 8.00pm.

Wed 20: Branch Meeting, The New Oxford, Bexley Square, Salford, 8.00pm.

Wed 27: Stockport Town Centre Crawl, The Railway, Avenue Street, Portwood, 7.30pm; (then various other pubs); to finish at Ye Olde Vic, Chatham Street, Edgeley, 10.00pm. Buses 203 (from Manchester Piccadilly (alight on Bridgefield Street then short walk), 322, 325, 327, 330, 380, 381, 389 along Great Portwood Street. Trains: Manchester Piccadilly to Stockport.

SEPTEMBER

Wed 3: Clifton Social, Golden Lion, Manchester Road, 8.00pm. Buses: 8 (from Manchester), 22 (from Swinton).

Wed 10: Greenfield Pub Visit along the Chew Valley Road, Railway, 8.00pm; King William IV, 9.00pm; other pubs if time allows; finish at Railway, 10.00pm. Trains: Manchester Victoria to Greenfield or Manchester Piccadilly (change at Stalybridge).

Trafford & Hulme

Branch Contact, John Ison, telephone: 0161 962 7976.

JULY 2008

Wed 16: Summer Pub of the Year presentation, Swan With Two Nicks, Park Lane, Little Bollington, 8.30pm.

Sat 26: Day Out with Rochdale, Oldham & Bury Branch, in and around Bury.

Thu 31: Branch Social at Jackson's Boat, Rifle Road, Sale, 8.00pm.

AUGUST

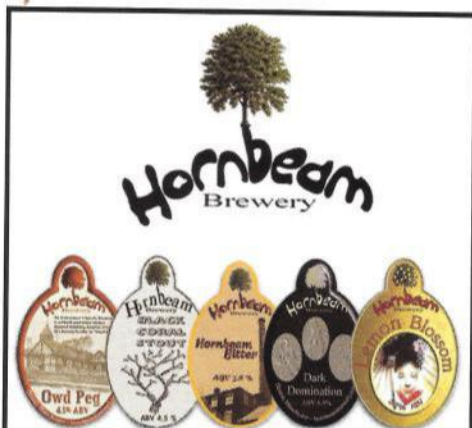
Thu 14: Branch Meeting, (venue to be confirmed).

Thu 21: Branch Social, The Greyhound, Cow Lane, Ashley. Trains: Altrincham to Ashley (this is a request stop).

Sat 30: Branch Outing to Kelham Island Brewery, Alma Street, Sheffield. £5 per head. Contact Social Secretary Roger Wood.

SEPTEMBER

Thu 4: Branch Meeting, (venue to be confirmed).



Hornbeam Brewery is family run and based in Denton's famous old bat factory. We at Hornbeam Brewery pride ourselves on our excellent range of cask conditioned real ales. The head brewer, Kevin Rothwell has many years experience in brewing and has perfected the balance of ingredients to create a range of quality ales bursting with aroma, flavour and bitterness.

Unit 1 - 1 c Grey Street, Denton, Manchester M34 3RU
Tel: 0161 320 5627 kevin@hornbeambrewery.com

LOCAL AND REGIONAL BEER FESTIVALS LISTINGS

Not necessarily endorsed by CAMRA.

C = Indicates official CAMRA or associated festival.

JULY 2008

C Wed 9 - Sun 13: 31st Derby Beer Festival, Assembly Rooms, Market Place, Derby.

Thu 10 - Sun 13: 2nd Annual Sunfest, Rising Sun, Fulwood Road, Sheffield.

Fri 11 - Sat 12: Chorlton Beer Festival, St Clements Church, Edge Lane, Chorlton.

Sat 12: West Cheshire Beer Festival, Spitting Feathers Brewery, Common Farm, Common Lane, Waverton, near Chester.

Wed 23 - Sun 27: Star Inn at Folly Hall Beer Festival, Albert Street, Lockwood, Huddersfield.

Thu 24 - Sun 27: July Beer Weekend, The Black Horse, Redearth Street, Darwen.

Fri 25 - Sun 27: Annual Summer Beer Festival, Dog Inn, Wellbank Lane, Over Peover, near Knutsford.

Fri 25 - Sun 27: 4th Anniversary Beer Festival, the Junction, 1 Baildon Road, Baildon.

Sat 26 - Sun 27: Hall Bower Athletic WMC Beer Festival, Hall Bower Athletic Club & Institute Limited, 53 Hall Bower, Huddersfield.

AUGUST 2008

Fri 1 - Sun 3: 7th Annual Mobberley Beer Festival, Victory Hall, Town Lane, Mobberley.

Thu 21 - Sun 24: August Beer Weekend, The Black Horse, Redearth Street, Darwen.

Fri 22 - Sun 24: 5th Annual Beer Festival, The Nook, Victoria Square, Holmfirth.

Thu 28 - Sat 30: Durham Beer Festival, Dunelm House, New Elvet, Durham.

SEPTEMBER 2008

C Thu 4 - Sat 6: Furness Beer Festival 2008, Coronation Hall, County Square, Ulverston.



Greenfield
Real Ale Brewery

Waterside Mills, Greenfield,
Saddleworth OL3 7NH

Tel. 01457 879789

info@greenfieldrealale.co.uk

www.greenfieldrealale.co.uk

*Real Ale's brewed with fine natural
ingredients and Greenfield Spring Water
for extra taste !!*

Come and find our '**Secret Brewery**' on the edge of the Peak District National Park. Whilst here enjoy a Brewery Tour followed by a few pints (or more) at our Brewery Bar.

Our beers are often named after local source's such as :-

Dobcross Bitter 4.2 abv -
an attractive 18th century stone Village.

Delph Donkey 4.1 abv -
the last Steam Train from Delph in 1955.

Castleshaw 4.2 abv -
location of a nearby ruined Roman Fort.



Bank Top
BREWERY

Our award winning beers are available
to pubs, clubs and homes.

Now also available in bottles!

A selection of our beers are now available in 500ml
bottles, a great way to enjoy our real ale in the
comfort of your own home.

Bottled Beer Gift Packs - Ideal Presents



The Pavilion, Ashworth Lane, Bank Top, Bolton, BL1 8RA
Tel/Fax: 01204 595800 www.banktopbrewery.com

Ginger Tom



A 6.0% ABV superior strong ale, booming with ripe malt, where the aromas of dark fruit are spiced with ginger and botanic herbs.

Available NOW exclusively from **Sainsbury's**