

15p

WHAT'S DOING



FEB
1984

THE MANCHESTER BEER DRINKER'S MONTHLY MAGAZINE

100th



EDITION

000000

WHAT'S DOING COLLECTOR'S EDITION No.....

HOPS COCK

Not for the first time, Manchester's favourite brewery has experienced serious problems with its Christmas production. many pubs were left without beer as hundreds of barrels of undrinkable amber liquid were returned to Strangeways. Boddingtons blamed the hops, but this excuse stretches credulity too far. Don't they check them? Why does the problem occur at Christmas when production is at its height? How is additional production achieved? Where is the extra beer stored? How long is beer kept in casks? The brewery and their P.R people remain silent. Public Relations is not merely a matter of a drum-beating hoo-ha when a pub opens or the brewery is 200 years old; it should provide an honest exchange of information between the brewery and the public. After all, a lot of people were affected. Publicans lost a lot of income and customers were inconvenienced. They surely deserve something more than silence or being fobbed off with less than the complete truth.

Roger Hall

PAGES FROM THE PAST

Rob Dunford casts a critical eye over those searing back numbers of What's Doing:

Vol 2, No 6 (1977) reported the Manchester Evening News competition to name a new pub on the Ellor Street development, Salford. The suggestion "Mark Addy" was a runner up to the winner, "Brass Tally".

Vol 2, No 7 (1977): The Grafton Arms, Manchester, was reported to be selling the most expensive Holts bitter - 26p per pint!

Plus ca change... **Sept 1977:** "The Red Dragon on the Crescent, Salford, may be re-opening soon as a free house. This former Tetley house has been closed for about six years..." It's now 1984 and we're still waiting!

You can't be right all the time! **April 1978:** "The Coach and Horses, London Road, Manchester, is now closed. Our unsubstantiated rumour department reports that when the pub re-opens it will no longer be selling real ale."

Jan 1978: A critical letter on Boddingtons asserted that "...what was once a strong-tasting bitter has, in my opinion, become gold-coloured tasteless water." - Was this the first stirrings of the "Bland Boddies" campaign? A letter in the March 1978 issue sprang to Boddies' defence, however.

You can always rely on bureaucrats! Feb 1978: "Manchester Arms reprieved - The Manchester Arms, one of the city's oldest pubs, is safe, at least for the time being. The City Planning Committee has told Greater Manchester Transport, the leaseholders, that they must not demolish the building, despite its derelict state."

Let us note, with regret, the demise of "City Desk" - there was no-one quite capable of following in Peter O'Grady's footsteps.

QUIZ TIME

1 How often has Roger Hall appeared on radio/TV as a CAMRA/real ale instant pundit and when were the first and most recent (last?!) appearances? (Prompted by WD No 9, July 1976, referring to regular spots on Radio Manchester)

2 Vol 2 No5 (1977): "Next meeting of the North Manchester Branch will be held at the Black Horse, Crescent, Salford" - When was the last time this branch met in a Greenalls house?!

3 Vol 2 No 7: The Three Legs of Man, Greengate, is to reopen soon" - How many times has similar news subsequently been reported in WD?

SOME CHRONICLES OF THE WHITBREAD CAMPAIGN

Vol 2 No 5 (1977): "...Ultimately, of course, we would like to see Chesters mild and the rest back where they belong, but it must be accepted that not only would this require an enormous change in thinking in both Cook Street and Chiswell Street, but a substantial investment in casks, drays, cleaning equipment and the rest. The likelihood of resistance from pub managers cannot be overlooked either. Not an easy task to set ourselves, but this is exactly why the Campaign exists." - Robin Bence

Vol 2 No 8: "In Greater Manchester, since they (Whitbread) took over Duttons in 1964 and Threlfalls in 1967 they have eradicated real ale and their subsequent actions may make its reintroduction impossible."

Nov 1977 (The first hints!) "The company is considering brewing draught beer at Salford and Blackburn once again."

Mar 1978 reported a formal announcement from Whitbread of production of real ale once again at Cook Street.

- Well, we're nearly six years on and it's not quite going right, is it?

WHAT'S DOING CENTENARY ISSUE - SPECIAL OFFER

In celebration of this momentous occasion, What's Doing readers are offered the opportunity to join CAMRA at the reduced rate of £5 (normal rate £7). Please complete the form below and return to: What's Doing Membership Offer, 37 Oaklands Road, Edenfield, Ramsbottom, Bury BLO 0LR by February 29th.

I/We wish to become members of the Campaign for Real Ale Ltd. I/We agree to abide by the memorandum and articles of association of the Campaign. I/We enclose £5 for full membership/husband and wife membership.

Full Name(s).....

Address.....

Postcode.....Signature.....Date.....

Cheques must be accompanied by a banker's card number and made payable to CAMRA Ltd. Not available as a membership renewal.

100TH WHAT'S DOING - THE COLLECTOR'S ITEM!

This month's What's Doings have been individually numbered on the bottom right hand corner of the front page. Next month we will be announcing 5 lucky numbers and the owners of these What's Doings will be entitled to free CAMRA memberships or renewals if they are already members. There will also be a booby prize of a night out with the What's Doing contributor of your choice at your expense.. Full details of how to claim will be given with the numbers next month.

WHAT'S DOING

GONE FOR A BURTON

The Bulls Head, Swinton, no longer sells Ind Coope's Burton Ale due to the familiar "lack of demand". At 71p per pint this is hardly surprising. The remaining real ales are Tetley mild and bitter on handpumps.

TROUBLE AT T'MILL

Like its neighbour the Bay Horse, the Millstone on Thomas Street, Manchester, is boarded up. Wilsons assure us that "tenancy problems", not refurbishment, have forced these circumstances and the pub will be reopening as soon as possible. Let's hope so.

DD K9P

First the bad news: Ind Coope have appointed a new advertising agency for their Double Diamond brew, whose demise - it is readily admitted - is due to CAMRA's efforts and the introduction of regional bitters such as Stones. The good news is that the advertising campaign will be concentrated in London and the South.

NO MILD AT THE DEAD HOUSE

The Dead House, or Dino's, as the Prince of Wales is known to its regulars, no longer sells mild. Despite its proximity to Wilsons Brewery, the pub has always retained its character but Dino, the landlord, has been fighting a losing battle with mild for some time. The fact that he was able to serve the beer in good condition on a turnover of 18 gallons a fortnight is a credit to his cellarman'ship, but its demise is inevitable. This 1984 Good Beer Guide pub still serves an excellent pint of bitter in a unique atmosphere.

SHUT

Bass and their merrie men have boarded up the Robin Hood on Queens Road, Collyhurst.

BAD BEHAVIOUR FROM BURTONWOOD

Burtonwood Brewery have erected four signs on the outside of the Stags Head, Junction Road, Bolton, proclaiming "Burtonwood Traditional Ales", strongly leading one to believe that these are what are on sale inside. There are also handpumps on the bars inside the pub. These handpumps are of the trick variety and operate electric pumps. On top of this, the beer is of the cold and fizzy variety. It is particularly disturbing to note that now Burtonwood have killed off their light mild in cask form they are introducing handpumps and pump clips to sell the keg version. A couple of years ago they declared they were unable to provide some form of promotion to stop the cask light mild from being phased out - shoddy behaviour indeed!

Overall, it seems nothing less than an attempt to con the gullible, young customers who frequent the Stags Head into believing they are getting a traditional cask beer. Most breweries realised this approach was a lost cause years ago. Are Burtonwood so naive as to think they can get away with it now?

GOLD CROSS

Gold Cross cask conditioned lager (og 1040°) made its first appearance at the Manor House, Withington, on 14th January (joining the Tetley mild, bitter and Ind Coope Burton Ale). It is kept under a CO² blanket in the cask and, after passing through a flash cooler, it is served through a distinctive yellow handpump. It is 76p a pint at the Manor House, and 75p at the Greenwood Tree in Wythenshawe, where it sells alongside the handpumped Tetley mild and bitter. It is also on sale at the Walness in Salford.

BETTER BASS

Bass North West are at last showing some signs of a move back to real ale and, more importantly, to the use of handpumps to emphasise the traditional nature of the beer. In many Bass pubs, lurking behind the ubiquitous illuminated box on the bar, complete with "keg" tap, there lies a cask beer. The only way to find out is to buy a pint (not a particularly cheap exercise in most Bass houses) and taste it. However, the return to handpumps, usually a guarantee of real ale in the North West, to distinguish their cask beers is a most welcome move and deserves our support.

ROYAL THORN

The Royal Thorn, just off Princess Parkway, has had a complete facelift and a new arrival is handpumped Wilsons Original bitter at 65p a pint. However, tuxedo-clad bouncers are in evidence, so smarten yourselves up.

ALL CHANGE

The Railway, a Wilsons house on Simpson Street, Hyde, has been renamed the Ten Houses. Mild and bitter are available on handpumps.



THE BRINSOP ARMS

590 - 592 CHORLEY RD
WESTHOUGHTON
Nr BOLTON
0924 812007

THE PROPRIETORS
JIM HARDY & ANDY BARTON
OFFER TO YOU

A BAR FULL OF HANDPUMPS SERVING

HAMMONDS, DRAUGHT BASS, HARTLEYS
BODDINGTONS, BASS BEST MILD, JOHN PEEL
BITTER, MATTHEW BROWN MILD
*** FUNCTION ROOM AVAILABLE ***

THE FREEHOUSE FULL OF FINE TRADITIONAL ALES
AND STOCKED HIGH WITH WHOLESOME FOOD

FILLED BAKED POTATOES OUR SPECIALITY



WELCOME RETURN

When the Welcome Inn on Ordsall Lane was demolished, John Willie Lees lost their only remaining Salford pub. They have now regained a foothold in the city by purchasing the Jollies, a free house on Oldfield Road. The Jollies was formerly a Wilsons house - the St Philips Tavern - before it was sold into the free trade. Let's hope that Lees make a success of it - other pubs in the area haven't fared too well. Wilsons sold the Kings Arms to Holts; Tetleys closed the Prince of Wales (soon to be a Chinese takeaway); the Red Dragon has been shut for years and the Angel's only roaring success was when it caught fire.

V F M AT TOPHAMS

Tophams Tavern, Smithybridge Road, Littleborough, must represent the best value for money in the area. The pub, situated near Hollingworth Lake, sells handpumped OB mild and bitter together with Taylors dark mild, Landlord and Theakstons Old Peculier on gravity from casks stored behind the bar. Both milds sell at 54p and both bitters at 58p. The OP costs 84p. Not bad when you consider prices charged elsewhere in the area's free houses.

REAL ALE IN ROSSENDALE

A few corrections are necessary to last month's listing. Under the pubs listed for Rawtenstall: The Rams Head should read Newchurch Road, Centre, Bass 4X, Cask(E). Also add: Red Lion, Newchurch Road, Higher Cloughfold, Wilsons M,B(E). Also, in the notes, instead of "Bass have only one real ale pub" it should read "Bass have only one keg pub"! It is in many other areas where they only have one real ale pub!

CROSS OUT

- Handpumped beer has not arrived at the Railway, Bromley Cross, contrary to the report in last month's WD. We're still waiting.

HANDPUMPS IN THE HOPE

Real ale has made a welcome return to the Hope & Anchor, Sandy Lane, Royton. The pub serves 4X mild, Toby Light and Stones bitter, all through handpumps.

BUCK UP

Cowpe is a hamlet just above Waterfoot in the Rossendale Valley and the Good Beer Guide describes the Buck as a "classic terraced local. Worth finding." If further spur were needed, it is now provided in the shape of Timothy Taylors Ram Tam - a real rarity in the area. This replaces Landlord for the winter and joins the Taylors best bitter and dark mild. Thwaites ales are also on sale and all are handpumped

UP THE BLUES

The former Hyde Road Hotel (Whitbread-Chesters) on Hyde Road, Ardwick, has had a transformation. Its new name is the City Gates, as it stands near the site of Manchester City's former ground. The pub has all the flavour of City regalia and, making a change from red, blue is the predominant colour. The lamp shades are in the shape of footballs and the carpets bear the City motif; shields, cups, photos, scarves, shirts, etc, adorn the place. Landlord George Heslop is a former City player and was the licensee of the Royal George on Lever Street in Manchester. Traditional handpumped Chesters is on sale at 62p a pint.

CORNBROOK

The Cornbrook Brewery was demolished some 6 or 7 years ago and now it would appear that the adjacent Bass North West Technical Offices on Ellesmere Street are to go to make way for road widening. We don't know if the Last Hop (ex-Turville) will be affected.

BANKS'S

The Longsight Inn on Redgate Lane, a former free house at the back of the Belle Vue site, is now selling the full range of Banks's products, including traditional draught mild (54p), bitter (56p) and PB draught bitter (like a light mild) at 54p. This is Banks's first acquisition in the area and more are to follow.

ENJOY A FREE PINT WITH US!



Bury Road
Rochdale
Rochdale 43214

A fine selection of handpumped real ales in traditional surroundings. Our current range is:-
**RUDDLES COUNTY, HOLTS BITTER, VAUX SAMSON,
EVERARDS TIGER, TAYLORS LANDLORD or PORTER,
TAYLORS BITTER, BODDINGTONS BITTER**

Guest beers are always available and in 1982 these included Adnams, Batemans, Matthew Brown, Clarks, Darleys, Failsworth, Hydes, Lorimer & Clark, Marstons, Moorhouses, Oldham, Priory, Robinsons, Theakstons, West Riding, Wilsons, Winkles

Why not organise a trip to see us. For parties we can provide a room, food and a beer of your choice (within reason!) Phone Ethel or Colin for further information. The first pint each is on us.

TROUBLE AT T'MILL (2)

The Old Mill, the AA hotel and restaurant in Ramsbottom which sold an excellent pint of Castle Eden Ale, closed its public bar in January. With the disappearance of Castle Eden from the Waterloo on Bolton Road, this leaves the Major as the only source of Castle Eden in the town.

MILD LOSS

There has been another cask mild loss in the Wigan area. The Enfield Inn, Enfield Street, Pemberton, went over to the fizzy stuff just before Christmas due to lack of demand. Wilsons took the pub over from Burtonwood in 1980.

RADCLIFFE RUMBLINGS

There have been strange goings-on at the Boars Head on Blackburn Street in Radcliffe. The information in November's WD was correct until the first week in December, when Boddingtons put an illuminated sign up. In the second week of December Boddingtons turned up and removed all their beer. Just before Christmas the handpumps disappeared, the Bass fizz pumps returned and prices returned to their higher level. Perhaps all this yo-yoing about is meant to bring the customers rolling in to see which brewery is putting their beer in, or pulling it out. It's Boddingtons' turn to come and take their sign down.

Just up the road from the Boars Head, the Rams Head, a Wilsons managed house (have they changed their name this year yet?) was closed for a couple of weeks and reopened before Christmas as an art deco pub called "Rams", where, to quote the press release, "no expense has been spared to create an atmosphere of sheer unadulterated luxury". Well, it looks just like any one of several Whitbread pubs around, with the tubular, chromed frames hanging everywhere, not to mention the dozens of green plastic plants. Pretty boring stuff really, but a lot better than the previous nautical theme. The beer was tank, but now it's Wilsons bitter on handpump (64p) and keg mild.

KEEPERS

The Woodhouses Inn, Woodhouse Lane, Wigan, has been reopened by Burtonwood after being shut for some time. It is now called the Keepers Inn and the hanging sign depicts a lock keeper, the likes of whom are no longer to be seen on Wigan's canals! That aside, the Keepers has been tastefully turned into a spacious, one-roomed pub, with one part of the floor raised Whitbread-style. It is a vast improvement on the old Woodhouses (indoor gents, now) and cask bitter and mild have been retained on handpump. The Keepers is said to be haunted - perhaps by the ghost of the light mild they used to sell here!

GLOBE RESIDENTIAL

The Globe Hotel, Globe Square, Dukinfield, is shortly to become residential. It will be the first Dukinfield pub for several years to offer hotel accommodation. Although a "free house", the range of beers comprises Tetley mild and bitter.

CHURCH NEWS

The Church Inn, Church Road, Northenden, has gone over to cask beer at last. Although the pub is now decked out in a diluted tropical bar-type theme, and is largely inhabited by the "young set", the handpumped Tetley mild and bitter was in excellent condition on a recent visit.

Contributors: Don Chattwood, The Whingeing Sartorial Scot, Steve Lawton, Peter Wightman, Dave White, Karl Greenall, Dave Hale, Roger Hall, Philip Levison, Leo King, Stewart Revell, Rob Dunford



Asian CORNER

Amongst the many excellent outlets on Wilmslow Road, Rusholme, is one which presents an entirely vegetarian menu. Chuni's Chaat House is the name and there are both eat in and take away facilities.

None of the ubiquitous vindaloo, biriani, pilau and tandoori dishes are to be seen; instead you must choose between various pooris, dosas, roti and parantha. For those overwhelmed by the array of unfamiliar names, the house speciality, Thali, consists of a number of Gujarati dishes served together as a set meal.

Delux Dosa, a large rice-flour pancake with savoury stuffing, is also good value. Worthy of special mention are Gol Gappas (or Panni Poori), which are hollow, crispy balls of wheat pastry, served with tamarind sauce and a few chick peas. The correct technique is to make a small hole at the top then fill with 3 or 4 chick peas, potato cubes and sour sauce. It must be said that on their own these do not make a substantial meal; one presumably pays for the preparation more than the contents.

Finally, there is a good selection of Indian sweets. Or why not finish off with Masala Pan - betelnut and spices wrapped in betel leaf; it will be with you long after you have paid the bill and departed!

Al O'Matey

(Regretfully I must withdraw the recommendation made in a past WD regarding the Shah)

A COMPREHENSIVE LIST OF
REAL ALE OUTLETS IN THE
METROPOLITAN DISTRICT OF

GROTLEY



At last - a full list of Grotley's amber nectar outlets. This guide has been in production for almost five years and has been delayed largely by the imprisonment and hospitalisation of our inspectors. Arson, assault, sarcasm, enteritis, Legionnaires' Disease, bubonic plague and onanism were only some of the perils to which our intrepid compilers were subjected in their search for authentic beer. During the time that the guide has been in production there have been colossal changes in Grotley. The new slum building programme has resulted in the loss of numerous alehouses of character, many of which were still lit by oil and infested with rats and cockroaches. Obscenity and violence, which were once the province of the back-alley beerhouse, have become more widespread in the new Baco-boxes which have sprung up. Alone among the brewers, Drabs have attempted to ensure the continuation of an aura of squalid feculence with their whole-hearted commitment to a policy of unplanned obsolescence, deterioration and decay so that at least some of the old values persist in a new era and ethnicity shines through.

The pubs marked with a * appear in the Greater Grotley guide.

ATHLETES FOOT

Back Gingivitis Street

Drabs M,B(H)

Arguably unique rodent collection

BOWEL TURNERS INN

Rear Entry

Pigswill 4X mild (H)

Former Victorian Deaf Aid factory



CIRCUMAMBULATORY NEWT

Plastered Walk

Gollocks B (W)

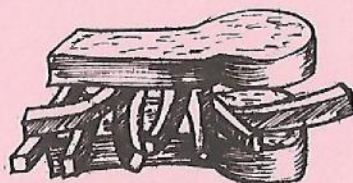
Full of boisterous old age pensioners

COALMANS PUNT

Canal Mine Terrace

Python 6X Porter (G)

Run by Tarquin Spooner, formerly of the Pheasant Pluckers Rest



* DOCKERS WEDGE

Eczema Ginnel

Drabs M,B(H)

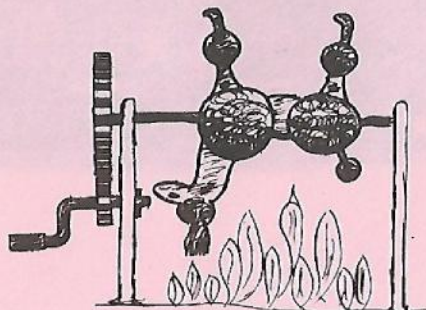
Landlord Drabs Drunk of the Year, 1978 and 1983

* DOG AND SPIT

Bilharzia Lane

Drabs M,B(H)

Barmaid strangles parrots





* DOSE OF CLAP

Retch Alley
Drabs M,B(H)
Draught Meths in season
.....

14th MOUNTED WHORE

Condom Close
Drabs M,B(H)
Black Masses every Tuesday.
Bring your own elbib
.....

FRIGATE AND SEA

Dockley Way
Boringsod BB,BM (E)
Venue for traditional Boxing .
Day syrup joust against the
Dockers Wedge
.....

GROPING FERRET

Importuning Lane
Brasses B, Muckraker (G)
Real ale only in Dirty Mac's
Bar
.....

* GUNGESMEARERS ARMS

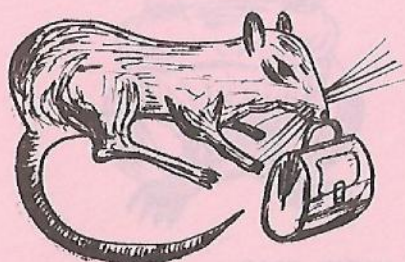
Scum Street
Drabs M,B(H)
A rare example of authentic
squalor
.....

HONEY LINGERS

Half Stewed Street
Gollocks B(E)
Unfriendly pub popular with
Irish Negroes
.....

JCB AND GRAPEFRUIT

Spewmans Ditch
Kepple B(H)
Meeting place for Pox
Doctors' clerks
.....



* RAT AND HANDBAG

Varooka Fold
Drabs M,B(H)
Room available for brawls
.....

* RATS VOMIT

Snots Buildings
Drabs M,B(H)
CAMRA member killing
landlord
.....

SAWDUST PLAITERS

Nuthouse Lane
Nausea BM(H)
Frequented by inmates of
local Mental Home.
.....



* SKUNKS BUM

Back Thrutch Lane
Drabs M,B(H)
Next to farting cushion
factory
.....

SLIMESHIFTERS ARMS

Schlurp Street
Honker & McNasty 80/-
Semi derelict, overlooking
knackers yard
.....

SPAGHETTI TREE

Pasta Rise
Capone Vecchio (H)
Former speakeasy
.....



*** VAPID TOAD**

Sweats Buildings

Drabs M,B(H)

Violent and filthy

WANDERING MENSTRUAL

Gore Street

Plasma (IVD)

Formerly the Bleeding Waif

WIG AND PISTLE

Newgate Hill

Drabs M,B(H)

Near the Law Courts.

Formerly the Porcine Flute



WHITBREAD SURVEY

Back in October Whitbread unleashed Trophy cask bitter on an unsuspecting public. For some reason best known to the brewery, this was to be sold alongside bright Trophy except in half a dozen outlets. In order to assess the wisdom or otherwise of Whitbread's attempts to promote a cask beer, a survey of the outlets was undertaken with the following results. In many cases cask Trophy had replaced cask Duttons or Chesters bitter.

1 44 pubs were surveyed, 42 out of these were managed, 1 had been managed but was now tenanted. I was thought to be tenanted.

2 What type of pub is it?

House of Horrors 14

Refurbished 25

Ordinary 15

3 Normal Choice of cask beers

Duttons/Chesters bitter 9

Castle Eden Ale 29

Hartleys XB 5

Trophy bitter 40

(4 others had no cask beer available at the time of the survey)

4 Is bright Trophy available?

Yes 42

No 2

5 If you ask for bitter, what do you get served with?

Bright Trophy best bitter 30

Cask Trophy bitter 1

Choice offered 13

6 If you ask for Trophy, what do you get served with?

Bright Trophy best bitter 25

Cask Trophy 11

Choice offered 8

7 How much was the Cask Trophy?

61p - 7; 62p - 7; 63p - 17; 64p - 8; 65p - 1; 66p - 1; 67p - 2

8 What was the quality of the beer like?

Poor/undrinkable 2

Acceptable 19

Good 15

Very good 4

Not available 4

What promotional material was there?

None 11

Pump clips only 25

Pump clips, lapel badges and beermats 8

10 Have you any comments on the pub and its beers?

(Selection only)

a. Barmaid was outnumbered 6:1 by the lunchtime food staff - unbelievable!

b A pub you would prefer to visit in a power cut. The fizz pumps, flashing lights and continuous music would be out of action. "We always serve (bright) Trophy to people who don't specifically ask for cask Trophy. That's when it's on, anyway."

- c. Horrors pub with a telephone kiosk, complete with female tailor's dummy and a squirrel making a phone call.
- d. All that are left of the old pub are the Ducketts stones.
- e. Staff reluctant to serve cask Trophy. Populated by immature drinkers.
- f. No real ale available yet again. Manager completely disinterested.
- g. Decent refurbished town centre pub frequented by too many of the dossers who went in before it was done up.
- h. Bar staff show little intention of serving cask beer unless specifically asked.
- i. I suspect that the landlord only offered people a choice of cask or keg because I was wearing a CAMRA badge.
- j. Most of this pub is beyond recognition as a public house.
- k. This Horrors pub seems almost reasonable by later efforts in the area.
- l. Over abundance of plastic greenery (or similar, umpteen times)
- m. Horrendous. If all pubs were like this I would go teetotal.
- n. Pedigree sold well but was taken off! (Also a Hartleys example)
- o. Duttons pump clip selling Trophy.
- p. Landlord keen on real ale (only once!)



THE STATION

You'll find us
at the end of
Warrington St.
next to
the by pass

**Our range of hand pumped real ales include
Marstons Pedigree, Merrie Monk, Mercian Mild,
Owd Rodger (when it's cold), Boddingtons Bitter.**

**Recent Guest Beers have included
Ruddies County, Oldham Bitter, Old Peculier**

**We are renowned for our superb luncheons
(hot & cold buffet plus tasty 'brown-dish' meals)**

All served in a Victorian setting.

*if the weather's nice,
enjoy a pint in the
beer garden!*

*** Organise an excursion & we'll provide *
a room & food if you wish.**



2 WARRINGTON ST., ASHTON-U-LYNE. 061-330 6776

- q. You have to be quick not to get keg Trophy
- r. Most of the bar staff served keg Trophy without hesitation.
- s. The public bar is the only sane place in this Horrors pub, but you can't get cask beer there. Nor can you take cask beer in. Cask Trophy 3p more than keg.
- t. Why a pub needs a waterwheel is a complete mystery.
- u. Sales of cask Trophy would improve if the bar staff realised it was available.
- v. You are only served cask Trophy if you ask specifically for it - i.e. "Special"!
- w. This Horrors pub replaced a licensed dentist's waiting room. An improvement?
- x. Staff complaining about having two different beers with the same name!



GREENALLS

Sir - Re January WD's report of "dirty deeds" at the Manchester Regiment, Hulme. Someone (WD or Trafford & Hulme branch?) might be interested in taking this up with Greenall's PR firm - City Press Services, 172 Chapel Street, Salford 3. 832 7972. Apparently

Greenalls pass over to them an "what's going on at the pubs?" enquiries.

P Inlaw

OLD TOM

Sir - I notice that some Robinsons outlets have had their Old Tom strong ale transferred from gravity dispense to handpumps. Two such pubs are the Three Legs of Man, Greengate, Salford, and the White Swan at Ladybarn. What happens where only electric dispense is available? Would Old Tom "go electric"? Who wants short measured beer? - especially this expensive brew!

Leo King

ERROR

Sir - Alas, a small inaccuracy in the article "Northenden and Didsbury Ale" (WD Jan) A second non-real ale outlet in Didsbury is the Barleycorn on Barlow Moor Road, a Tetley house which was latterly the Didsbury Lodge Club. However, this still means that 80% of pubs in this area offer real ale - a proportion I'm sure we would all be delighted to find nationally!

Phil Jordan

NO MILD

Sir - The Coach and Horses, opposite Piccadilly Station, no longer sells mild due to lack of demand. If a hostelry as popular among discerning drinkers as this can't sell enough of the stuff, what hope is there for its continued presence in the rest of Manchester's pubs? Come on, bitter drinkers, why not start off your evening's supping with a pint of mild and help to stop the demise of a much underrated drink!

Ken Linkman

ANGRY

Sir - I feel I must protest at a current advert carried in your esteemed mag. The Brinsop Arms at Westhoughton, whilst undoubtedly a very wonderful pub, claims to sell Hammonds ales. Whether the licensee was able to stockpile the entire final brew from this once-famous brewery is open to speculation. The real ale scene is complicated enough these days, with the bigger breweries resurrecting brand names of beers long since gone, usually as a result of their own avarice in the takeover mania of the 1960's. Many drinkers might scoff at "badge engineering" in the motor car industry but are apparently quite happy to tolerate a similar situation in our pubs. Mmm, I think I'll just pop up town for a pint of Welcome bitter. The secondary fermentation should be virtually complete after 25 years!

Chaddertonian

SUBSCRIPTIONS

If you want to be sure of getting **WHAT'S DOING** every month, why not subscribe? It costs £1.90 for six issues, postage paid. Fill in the form below and send it together with a cheque or postal order made out to "WHAT'S DOING" to Roger Hall, 123 Hill Lane, Blackley, Manchester

Name.....

Address.....

.....

Please send me the next 6 issues, starting with.....(month)

BACK NUMBERS

These are available from the above address at 10p a copy. Please send a large stamped, addressed envelope.

WHAT'S DOING

WHAT'S DOING is edited by Neil Richardson, 375 Chorley Road, Swinton, Manchester M27 2AY

COPY DATE FOR THE NEXT ISSUE IS THE 20th OF THIS MONTH

JOIN CAMRA

To join **CAMRA** send £7 to Membership, **CAMRA**, 34 Alma Road, St Albans, Herts AL1 3BW



Just in case smug self-satisfaction has not crept in elsewhere in this, the 100th edition of the highly wonderful and marvellous What's Doing, I would like here and now to make a statement of extreme self-satisfied smugness. I am very proud to have been associated with such a highly wonderful and marvellous publication and may it go on to interest and educate the hoi polloi for another 100 editions. What's Doing is so highly wonderful and marvellous that it has outlived almost all of the newsworthy personages with whom its hallowed pages have been peopled. Regular readers may be interested to know what's happened to these stalwarts of yesteryear; where are they now? Mr Starsky of the askew eyes, for example, who used to extol the virtues of Snotes whilst becoming legless on Drabs, has returned from Patagonia to become an apologist for Kepples Half-timbered Lovely Pubs (left of the hills) Inc.

The charming Mr Cobbler has followed up his immensely successful brewing venture with an equally outstanding career as ambassador to Afghanistan, Grenada, Guatemala and the Lebanon. Max Wall has taken over from the importunate Leonard Sacks as compere of The Good Old Days, which will now continue for evermore. The jawbone of Martin Boreman has been found in the cellar of an Ecuador convent, whilst Badge and the Lovely Madge Fairplastic have joined other notables of the campaign like Dr Brew Ten, Jimmy Slyme and the Noble in hostelry ownership.

The balding Rasputin has not been seen for almost half a decade, whilst the Lirrel Pirrock is in an ongoing matrimonial situation, complete with knitted hat and scarf. Mr and Mrs Prune are still in a high profile mode, inspecting taverns with media famous televisual divorcee Bogbrush and Milton, Pugh and Samson, their pet labradors. Boris Pratt is feeding Red Ken's salamanders, whilst Dermatitis is in

a massive cupboard full of Teddies. The Fatted Pseud, where I was once vice-captain of the embroidery team, is not what it was. Humpty Dumpty has taken to surreptitious purchasing of this organ from a certain hostelry which boasts a ballroom and a camel stable and Tom Duckfoot now lies on his own couch mumbling, "Bingley arson, no!" - whatever that might mean. The Barnsley and Sheffield Cretin, Peter Podge, is studying for a PhD in Porcine Dementia and has not been able to entertain us with his coruscating repartee and unparalleled rhetoric. In a rapidly changing world it's good to see that some things remain the same; Bunt is in Strangleways again for GBH. Let's hope that the next 100 editions can provide us with campaign members and boss-persons as interesting and committed as those of the first 100 years.

2084 - A REVIEW

CAMRA International can reflect upon another campaigning decade. On the plus side, our sponsorship of the European Nine Men's Morris Championship resulted in a win for San Marino. The trip to Joseph Holt (International) PLC, at their new factory in Milwaukee, Wisconsin, was an unqualified success. Their take over of Schlitz and Budweiser in the USA strengthened their world dominance, following their acquisitions in the 1990's of Fosters (Australia) and Lowenbrau (West Germany). Another welcome sign is the refusal of John Smiths to provide a keg version of any of their 17 real ales, despite criticism from the inhabitants of Spaceworld 104, the Japanese satellite colony. It is rumoured that BILE (Bring In Lager for Everyone), the keg revivalist organisation, has been mounting a campaign on the off-earth habitations. It is doubtful, however, that this movement will affect Britain's 8,000 home brew pubs. The home brew pub revolution, older readers will remember, received its first boost back in the 1990's, when Grand Metropolitan sold their Wilsons managed houses (formerly "Pennine Host Group") to the Failsworth Brewery, having run out of new names for the company.

On the debit side, it is sad to report the retirement of CAMRA (Undergarments) Ltd Chairman, Terry Whitter. His foresight in introducing CAMRA motifs to cami-knickers, G-strings, garters, liberty bodicies and thermal jock straps gave the Campaign a new dignity and ensured its high standing in public respect.

Here's hoping that the next ten years sees the Campaign going from strength to strength and that we achieve our object of keeping the price of a cosmo pint below 100 Eurodollars.

Ken Birch

CAMRA NEWSLETTER EXCHANGE

Some time ago, "What's Doing" took part in a newsletter swap, from which we received the consolidated literary output of CAMRA branches throughout the country. The table shows how they compared in a number of aspects. Most were free; only Tyke Taverner and What's Doing made a charge (15p). Six did not accept advertising, but most of these were low cost, single or double sheet handouts. A notable exception was

TITLE and Branch	Pages	Price	Beer and Pub Topics %	CAMRA Topics %	Advert Space %	Critical or Campaigning Items %	Other Items %	Issues per Year	Print Run
PINT TAKEN Northampton	2	-	10	50	0	40	0	6	1500
GETTEM IN Swindon & N. Wilts	2	-	15	80	0	5	0	6	500
NORFOLK NIPS Norwich & Norfolk	4	-	35	25	20	17	3	6	5000
PUB MIRROR Hull	2	-	67	25	0	8	0	12	1100
YOUR ROUND N. Sussex	4	-	40	60	0	0	0	4	550
ALE Cambridge	8	-	78	7	0	10	5	12	2500
THE TIPPLER Gloucestershire	4	-	80	20	0	0	0	6	1200
EXE ALE Exeter & E. Devon	2	-	75	25	0	0	0	6	200
DARLINGTON DRINKER *** Darlington	4	-	65	8	10	17	0	12	700
PUBS & PINTS Cleveland	20	-	40	35	5	8	12	6	1000
NEW TYKE TAVERNER West Yorks.	28	15p	40	13	27	8	12	11	800
BOOZLETTER Ashford & Shepway	12	-	63	17	0	20	0	4	500
WHAT ALES W. Cumbria & Lakes	8	-	25	63	0	0	12	6	700
BORO BANTER ** Solihull	4	-	53	18	25	4	0	12	500
BEER MATTERS Sheffield	8	-	88	12	0	0	0	12	?
WHAT'S DOING ** Greater Manchester	20	15p	54	10	13	16	7	12	2300

** Average of two issues

*** " " three "

** " " four "

Cambridge "Ale", which managed a quality presentation with reasonable content; presumably this is subsidised by highly profitable beer festivals of recent years.

Interestingly, all those with no critical or campaigning content also carried no advertisements; yet opponents of advertising usually argue that it can stifle critical comment.

Only Tyke Taverner bore any close resemblance to What's Doing; 24 pages of A5 bound in coloured card. Yet the general layout was more "untidy" and the poor artwork on most of the many pub advertisements added to the general disharmony.

Some famous names were missing; where were Mersey Drinker, London Drinker and Durham Drinker? These are among the better branch newsletters.

Without being smug or complacent, it is clear that What's Doing is somewhere near the top of the First Division, if the samples we received are at all typical of the national output.

Pete Cash

SORGHUM BEER - REAL ALE THE AFRICAN WAY

Traditionally, sorghum is one of Africa's main sources of nutrition. It is widely used to make a variety of porridges and beverages, many of which are fermented to enhance their flavour.

The major part of the South African sorghum crop is malted and used in the preparation of sorghum beer. It is estimated by the South African authorities that nearly 2,000 million litres (3,500 million pints) of sorghum beer are produced annually; approximately half by the government-controlled breweries, the rest being home-brewed by the African housewife, who by tribal custom is the brewer.

In some ways sorghum beer is similar to traditional British beer. Many types are brewed, each tribe having a different recipe; examples are utshwala and utywala, which are the tribal beers of the Zulu and Xhosa tribes. Sorghum beer and real ale have roughly the same alcohol content (3.5%), they both undergo secondary fermentation, which in the case of sorghum beer leads to a short shelf life of 3-5 days. Both types of beer are highly nutritional - many African factory workers have a liquid lunch of sorghum beer (just as their counterparts in Manchester have a liquid lunch of Robinsons, Boddingtons, etc.)

The main differences between African and British traditional beers are taste, clarity, fermentation and price. Sorghum beer is sour and cloudy (caused by suspended solids and yeast), the taste arising from the fermentation process, which is a mixture of lactic and alcoholic

fermentation - European beers do not undergo lactic fermentation as they contain hops which are absent from the African beer. The raw materials used in the two types of beer are different, sorghum beer uses sorghum malt and adduct of maize or sorghum, whereas European beer uses barley malt with cereals or syrup as adduct.

The main difference between the two types of beer is price - a litre of draught sorghum beer costs 4p in an African beerhall and 6p in a bottle store, which is a lot cheaper than the European-type beers available in South Africa!

Phil Green



Branch Diary

SOUTH MANCHESTER

Tues 7 Feb, Open Committee meeting, Swan with Two Necks, Princes Street, Stockport Shopping Precinct, 8pm
Thurs 9 Feb Branch meeting, 8pm, Gateway, Kingsway, East Didsbury. Guest speaker from Hydes Brewery
Sunday 12 February Provisional breakfast and lunchtime pub crawl of Saddleworth. Details from B Pryme 061 225 6606 (home)
Thurs 23 February, Pub of the Month, Tiviot, Tiviot Dale, Stockport
Fri 2 March GSG Survey pub crawl of Gatley. Details from B Pryme
Tues 6 Mar Open Committee Meeting, 8pm, Swan with Two Necks, Stockport
Contact S Sproson 061 225 4058

BOLTON

Weds 8 Feb, 8pm. Branch meeting, Falcon, Kay Street, Bolton
Tues 14 Feb 8pm. Social Victoria (Fanny's), Markland Hill, Bolton
Weds 7 Mar 8pm Branch meeting Queen Ann (Thwaites), Little Lever
Sun 11th Mar 12noon. Meeting "House with no Name", Bradshaw
Wed 21 Mar 8.30 Social, Alma, Bradshawgate, Bolton
Sun 25th Mar 12noon. Meeting, Fourgates, A6, Blackrod
Contact Jim Hurst Tottington 3532

ROCHDALE, OLDHAM & BURY

Tues 7 Feb 8pm, Branch meeting, Albert (Burtonwood), Spotland Road, Rochdale
Tues 21 Feb 8pm, Committee meeting, Navigation (Holts), Drake Street, Rochdale
Tues 6th Mar 8pm. Branch meeting, Crown (OB), Huddersfield Road, Oldham. Guest speaker Tony Molyneux (NE & bar)
Tues 20 Mar 8pm. Committee meeting, White Hart (Wilsons), Rochdale Road, Royton
Contact Steve Lawton 061 620 9239 (h) or 061 775 3351 ext 248

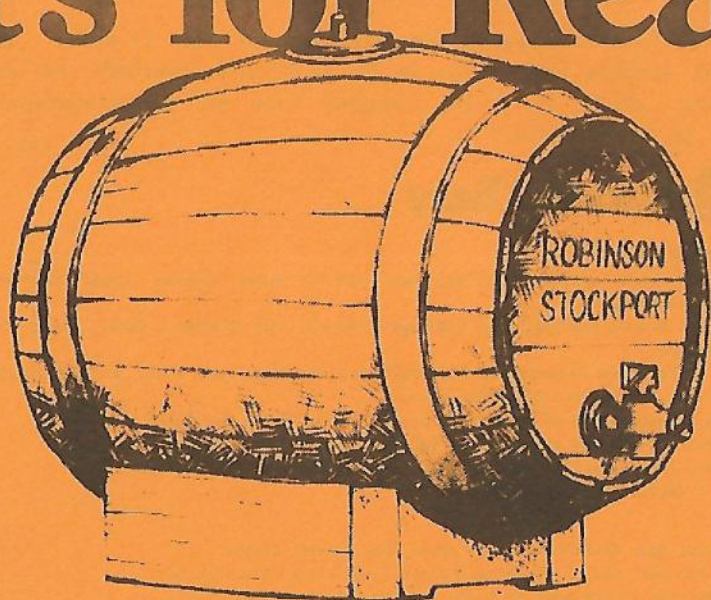
NORTH MANCHESTER

Weds 15 Feb Branch meeting, White Swan, Swinton 8pm
Weds 22 Feb. Whitbread survey. Royal George, Rochdale Road, 7pm. Crown & Anchor 9pm
Wed 29 Feb. LEAP CRAWL. Lord Nelson, Chapel Street, Salford, 7pm. Eagle, Angel, Punchbowl, Crown, Rising Sun, Abercrombie, White Lion, Lord Clyde
Wed 7 Mar Higher Broughton crawl. 7pm Horseshoe, Back Hope Street. 8pm Church, Hilton Street. Ending in Grove, Bury New Road
Wed 14 Mar Old House at Home, Bottomley Side, Blackley, 8pm.
WEDS 21 MAR. TENTH ANNIVERSARY OF THE FOUNDING OF THE BRANCH. MEETING AT THE BIRTH-PLACE, THE LORD NELSON, RINGLEY. 8pm. EXTREMELY OLD MEMBERS WELCOME. MEMBERS OF BOLTON AND R.O.B. BRANCHES INVITED.
Contact Roger Hall 740 7937

HIGH PEAK AND NORTH-EAST CHESHIRE

Tues 7 Feb 8.30 Committee meeting, Rising Sun, Bredbury (Wilsons)
Thurs 23 Feb 8pm. Denton Women's Club - talk on CANRA. 12 Library Building, Peel Street, Denton.
Fri 24 Feb, Minibus trip to Whaley Bridge
Contact Tom Lord 061 427 7099

It's for Real



We at Robinson's think that what matters most about beer is its flavour. That's why we are still brewing beer the same way that we did a hundred years ago. Natural ingredients, the same time-honoured brewing ways, even on the same site - not many can say that!

And you can buy at least one, usually two and sometimes more of the traditional ales listed here in any Robinson's pub within 100 miles of Stockport. Not many can make that sort of claim either.

Now you can have Real Ale at home for parties or just for your own enjoyment. Available in Firkins and Pins*, complete with tap, stillage and detailed instructions. You can order from any Robinson's On or Off-Licence or Unicorn Wine Shops.

Old Tom Ale
Best Bitter Ale
Best Mild Ale



Always available from Unicorn Wine, Lower Hillgate, Stockport, (just by the Brewery) 061-480 6571. And it's the cheapest way of buying beer. A little more trouble perhaps but we think you will agree with us that it is worth it.

There are deposits on the casks, stillages and taps, returnable in full when you bring them back. You can borrow glasses, paying only for those you break or fail to return providing you also make appropriate purchases of items to fill them.

We strongly recommend that you place your order as soon as possible for Christmas or New Year use.

It's Robinson's . . . for Real.

**When you buy any of these Robinson's Ales,
you are buying Traditional Draught Beer
-at its very best.**