

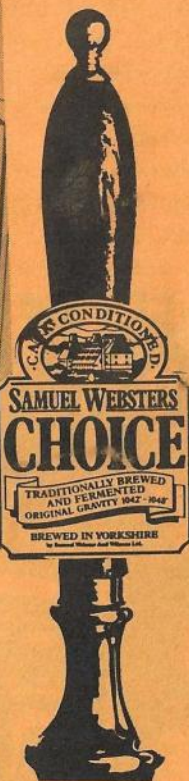
# WHAT'S DOING



MAY  
1986

THE MANCHESTER BEER DRINKER'S MONTHLY MAGAZINE

## WEBSTERS CHOICE



On 9th April CAMRA members from over 20 Northern branches were treated to a tasting of Websters' new premium cask bitter, "Choice", at the Halifax brewery. The new brew has an original gravity of 1045°, which puts it in the draught Bass/Pedigree market sector. The beer was full bodied and smooth with none of the overpowering malty taste associated with some high gravity beers and it was not distinctive in the way that Taylors Landlord, Holts or Higsons could be described. Perhaps because it will eventually be marketed nationwide it is unexceptional (or inoffensive) - a high quality beer which will appeal to most palates. Choice is on trial in 50 outlets to evaluate its success, the future



potential and to determine such factors as price differentials and its effect on sales of other beers. All Choice will be served by handpump and point of sale publicity includes pump clips, window stickers and shelf wobblers.

A premium cask bitter has been in development for some four years - both Wilsons and Websters were intent on marketing such a brew. Wilsons' Gold Medal, which was favourably received at a tasting over two years ago, was dropped in favour of a single brand and Choice has been under development since the merger of the two breweries at the beginning of 1985.

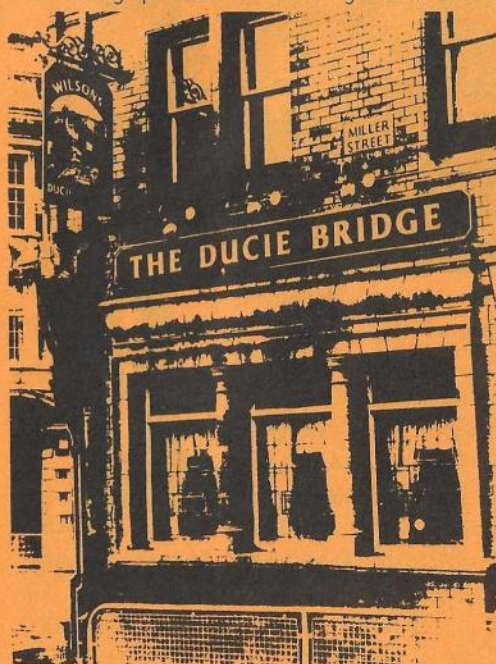
The rationale behind the introduction of the beer is that premium bitters have seen a 3.6% increase in the North, whilst bitter sales generally have fallen by 4%. At the same time the percentage of cask doubled. Demand for premium cask bitters at present is fairly low - some 2½% of total beer volume - and there is a low level of competition. Websters believe that Choice, the big brother of their Yorkshire bitter, can emulate the success of the latter, which the brewery claim is the most successful cask beer in the UK with 10,000 outlets and a turnover of 500,000 barrels a year.

Websters Choice is brewed in a traditional manner from traditional ingredients. Gypsum is added to Burtonise the water and the hops (East Kent Goldings) are pelletised. As the beer is not a volume seller, it is being produced in 11 gallon casks. Peter Humphrey, the brewery MD, does not believe in rip-off prices and will discourage outlets from selling it at 98p a pint. It is expected that Choice will retail in the low 80's - an acceptable price for a strong and most acceptable cask beer.

(The photo shows Head Brewer John Kemp and CAMRA's David Shelton at the Websters tasting.

#### DUCIE CHOICE

One of the pubs selected to sell Websters Choice is the Ducie Bridge on Miller Street, Manchester. The pub returned to tenancy last year and all the Pennine Joke tat has now been removed. The disappearance of the false Italian roofs has improved what was formerly a



pretty dismal pub. The ceilings are still low but the open plan area to the left is broken up by pillars and shelves. To the right is an almost separate room with some semblance of a vault - there's a dartboard and a steel oche over which the inadvertent may accidentally trip! Some of the books on the mandatory bookshelves are not inappropriate - "Stones Justices' Manual" and "Licensed Houses and their Management".



Food is still important in view of the potential lunchtime custom from the CIS opposite. Websters Choice at 78p is complemented by Wilsons bitter at 70p and Websters Green Label Best at 69p. The licensee, who was formerly at the Crown on Blackfriars Street, explained that the last named was a much better seller than Wilsons mild, which is no longer on sale. The Ducie Bridge is well worth a visit, particularly as it is close to a number of other excellent pubs.

\*\*\*\*\*

Websters Choice is on sale in the following pubs:

#### MANCHESTER

Crown, Deansgate  
Old House at Home, Blackley  
Rising Sun, Queen Street  
Withington Ale House  
Ducie Bridge, Corporation Street  
New White Lion, Blackley  
Peveril of the Peak  
Horse & Jockey, Chorlton  
Salisbury, Wakefield Street  
Tatton Arms, Northenden  
Sams Chop House, Bk Pool Fold

#### TRAFFORD

Moss Vale, Urmston  
Vine, Sale  
Sale Hotel, Sale  
Griffin, Bowden  
Fox & Hounds, Flixton  
Moss Trooper, Timperley  
Urmston, Stretford Road  
Waggon & Horses, Sale

#### STOCKPORT

Ash, Manchester Road  
Egerton, St Petersgate  
Hesketh Arms, Cheadle Hulme  
Malt Shovels, Cheadle  
Smithy, Cheadle Hulme  
Wrights Arms, Offerton

#### BURY

Bridge Inn, Manchester Road

#### TAMESIDE

Moss Tavern, Droylsden

#### OLDHAM

Queens Arms, Rochdale Road  
Royal, Rochdale Road  
White Hart, Oldham Rd, Royton  
Cranberry, Cranberry Street  
Friendship, Lees Road  
Springbank, Chadderton  
Whitegate, Chadderton

#### ROCHDALE

Horse & Farrier, Edenfield Rd  
Spread Eagle, Cheetham St

#### IN THE STICKS

Fox & Grapes, Wakefield  
Old Crown, Bradford  
Prince of Wales, Ossett  
Stickler Inn, Bradford  
Woolpack, Haslingden  
Postern Gate, Warrington  
Swan, Winwick  
Woodlands Hotel, Harrogate  
Bowling Green, Nantwich  
Fountain, Bradford  
Jacob's Well, Wakefield  
Peel Hotel, Bradford  
Queens, Outwood, Wakefield  
Spindle Tree, Wakefield  
Union Cross, Halifax  
Cornmarket, Liverpool  
Old Ship, Styall  
Pack Horse, Mottram  
Junction, Marsh, Huddersfield



# HOLTS

Last month George Fildes, landlord of the White Swan, Swinton, invited Dick Venes, Under Brewer at Holts, to give a talk on Manchester's premier amber nectar purveyor for the benefit of CAMRA members.

Mr Venes was obviously proud of his product and confident about the company's future (the family still own more than 50% of the shares). The Derby Brewery was virtually unchanged until the late 1970s, when sales had increased to such an extent that the brewery was not big enough to supply its pubs. In 1979 a new fermenting building was completed and this increased capacity by 70% Otherwise Holts are "traditional low-tech" and proud of it.

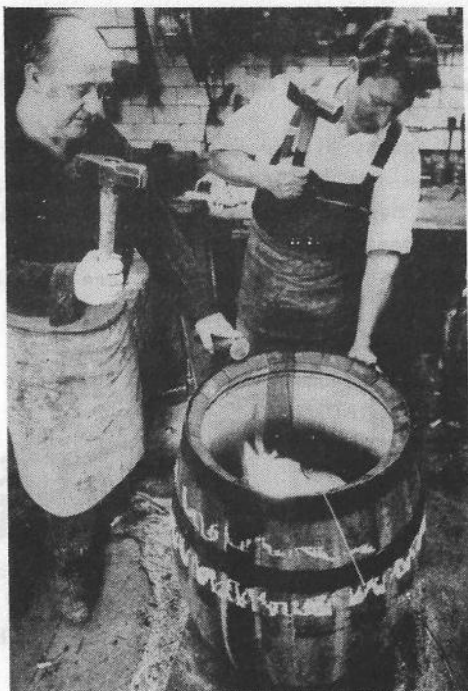
The strength and recipe of the beers hasn't changed for 30 years (can any other so-called "traditional" brewer say that?) and the range is still the same, except that they stopped



Top: Joseph Holt. Centre: Richard Kershaw, Joint Managing Director and great great grandson of Joseph. Bottom: Knowsley Hotel in the last century; now the Derby Brewery Arms. Part of the Derby Brewery can be seen on the left.

producing Diamond Ale when on-site bottling ceased in November 1980. Mild now forms only about 25% of sales as against bitter, whereas in 1963 55% of beer sold was mild, but apparently it's still viable as total sales have increased. Sixex is the only bottled beer whose sales are increasing, but there's no chance of a cask version!

Town water has been used for brewing since November 1969 - the quality of Cheetham's well water had deteriorated by then! The malt comes from 6 different suppliers, mainly in the Eastern Counties and Yorkshire since a bad harvest in Scotland last year. (The pale malt tasted the



nicest and would provide some stiff competition for Bombay Mix/Scampi Fries should Holts decide to change direction.) Spent mash is still sold to farmers for cattle feed, although demand has dropped since the EEC reduced milk quotas. Hops come in 8 varieties from 20 different growers in Kent and Worcestershire - the competition keeps the quality up and the prices down. And the yeast? Well, they **think** it came from Hydes twenty years ago.



Much of the brewing equipment is second-hand - the two boiling coppers came from Robinsons of Chorlton Road (closed around 1940) and two tanks for maturing lager from Whitbreads at Kirkstall - they had to remove a bit of roof to get those in.

Plans for the future? The Atherton Arms is due to open in mid-June and the new pub in Little Hulton in September (see Competition). Another new pub in Padgate should be finished next year. Company

policy is to improve existing pubs (sic!) and to install handpumps in all new or rebuilt houses; there are no plans to change the beer or to introduce new products. They don't really care what CAMRA thinks, but then they seem to be doing everything right anyway!

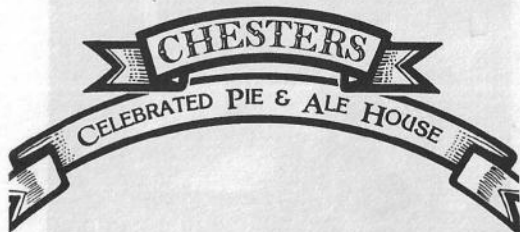
(The photo shows the brewery's cooper at work in the 1960s)

# CITY DESK

## REAL GRAND

Boddingtons bitter and John Smiths bitter - both hand drawn - can be had for a mere 60p a pint during the "Happy Hour" - 5.30pm to 7.00pm - Monday to Friday in the Vineyard Bar of the GRAND HOTEL, Aytoun Street. On my last visit the beers were both on good form and the bar was nicely busy.

PETER O'GRADY



## PIE-AYED

A "thumbs-up" is, I feel, deserved for the re-refurbished CHESTERS "Celebrated Pie and Ale House" (formerly Mr Chesters), Cateaton Street, which offers Chesters mild and bitter alongside Thwaites

bitter and Marstons Pedigree, all on handpump. A fine range of hot and cold hand-made pies is also for sale (from £1.95 to £2.50) including Beef, Smoked Oyster with Guinness and Hare, Rabbit, Venison and Pate.

## HIP HIP...

HENRY'S Cafe Bar, a Whitbread development, is due to open in Arkwright House, Parsonage Gardens, at the end of April. It looks very swish through the windows - but no sign as yet of handpumps on the bar.

## CO-INCIDENCE

Having got over their brush with the Public Health recently, BRANAGAN'S BAR in the Royal Exchange basement has switched beers. Wilsons and Websters bitter and Websters Green Label are now available on handpump.

## OLD ALE?

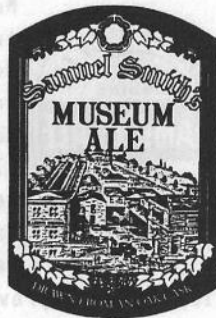
Museum Ale, Sam Smith's new premium bitter, has appeared at SINCLAIRS in Shambles Square. Hand-pulled from oak casks and named after the brewery museum at Stamford in Lincolnshire - well worth a try.

## UPPER CRUST

The top echelons will soon be able to dine and drink in splendid isolation with the proposed opening of an "executive suite" in the former sandwich bar of SAM'S CHOP HOUSE, Back Pool Fold. No details of beer yet.

## MYSTERY

A new subterranean pub/bar is taking shape in Princess House, Princess Street (near the Union). No signs yet as to the name of the establishment or the brewery involved.



## PEV PACKED

The PEVERIL OF THE PEAK, Great Bridgewater Street, held its official reopening on April 15th. Another packed house for this marvellously restored pub. The new Websters Choice seemed very popular amongst the assembled throng. I wonder how their heads felt the next morning?



## RAFFALD (1733-1781)

A former innkeeper in both Manchester and Salford has been honoured with an historical blue plaque - situated by the back door of Marks & Spencer in Shambles Square.

Elizabeth Raffald ran the Bulls Head, Market Place, Manchester. and the Kings Head, Chapel Street, Salford. Neither place exists today, although "Kings Head Yard" can still be seen. Apart from running these pubs, Mrs Raffald also: had 15 daughters; published Manchester's first street and trade directory; assisted in running two Manchester journals or newspapers; wrote and published a cookery book; ran a delicatessen shop and opened the first employment agency for domestic servants. Drink a toast to her next time you are in Shambles Square.



## GONE FOR A....

Burton Ale and Jennings have joined Tetleys bitter and mild at SMITHFIELDS on Shudehill - a very comfortable and well-appointed watering hole, which would, I feel, be more at home in St Ann's Square than on Shudehill.

## GROT

My nomination for the most unwelcoming entrance to licensed premises goes to Corbieres Wine Cavern, Half Moon Street - it's how I imagine the ante-room to Hell to be. However, the Marstons Pedigree is fine - if you can brave the stairs.

\*\*\*\*\*

## LOW NOTE FOR BASS

The vast array of handpumps in the Cross Keys, Eccles, has dwindled to one selling Bass. Apparently there's no demand. Funny how most of the other pubs in this western Mecca manage to find enough customers who like traditional beer. Could it be that Bass couldn't give a monkey's about real ale and are more concerned with daft adverts to try to fill their pubs?

## BODDY COUNTS (no.86)

With the help of Higgies, Boddies profits have shot up 24% to £11.7 million. Why do we keep telling them they're doing everything wrong? And what's this we hear about chilled beer? It'll be keg next (over Ewart's dead body, no doubt).



## BURTONWOOD'S NEW BEER

This month Burtonwood launch their new "premium" bitter, JBA (original gravity 1039). Here's where you can get it.....

### WIGAN AREA

Park Hotel, Bryn  
Royal, Golborne  
Royal Oak, Standish  
Squirrel, Ince  
Old Pear Tree, Wigan  
Raffles, Wigan  
Alexandra, Hindley  
Balcarres Arms, Haigh  
Red Lion, Newburgh  
Cherry Gardens, Wigan Lane  
Prince William, Dalton  
Boars Head, Standish  
Eagle & Child, Leyland  
Welcome, Blackpool

### WARRINGTON AREA

Carriers Inn, Norley  
Elm Tree, Burtonwood  
Bridge, Burtonwood  
Chat Moss, Glazebury  
Penny Ferry, Warrington

### MERSEYSIDE

Cambridge Hotel, Liverpool  
Manor Farm, Rainhill

Rake Hall, Little Stanney  
Royal Oak, Liscard  
Wellington Inn, Hale  
Bootle Arms, Melling

### BOLTON AREA

Swan, Bolton  
Trafalgar, Bury  
York, Bolton  
Alma, Bolton

### MANCHESTER AREA

Grove, Blackley  
Albert, Rochdale  
Bulls Head, Manchester  
New Union, Manchester  
Radclyffe Arms, Middleton Jct

### IN THE STICKS

Swan, Talke, Staffs  
Brighton Belle, Winsford  
Raven, Winsford  
Stag Hotel, Dolgellau, Wales  
Crown & Liver, Ewloe, Wales  
Queens Head, Mold

## BOLTON BRIEFLY

The modernisation of the Millstone (WD last month) has resulted in an improvement of the pub but the ale stays the same - keg Tetley. What a shame.

No change either at the Griffin (Bass).

Real ale gains are Trophy at the Bridge, Horwich, joining the Castle Eden, and a Chesters handpump has appeared at the Rose & Crown, Farnworth. The Bass handpump at Winstons (free house), Bolton, has been moved from relative obscurity at the side of the bar to the front and sales are still increasing.

Pennine Joke have turned the Jolly Miller (aka Barnabys, etc), Chorley Old Road, into a Sports emporium. This could well be an improvement. One real ale - Wilsons bitter.

Plans for the Bolton Heritage Centre in the old Lion Oil Works on St Georges Road include a pub and brewery. Interesting.

Less than three months after reopening as a free house, the Quill and Pen (ex-Railway) on Great Moor Street has lost its cask Tetley mild and bitter. Handpumped Jennings bitter is now the only real ale in the range of fizz.



# WIGAN & DISTRICT

DAVE WHITE

Greenall Whitley are to close two pubs in the Wigan area. The British Queen, Ormskirk Road, Pemberton, has been keg for several years, but the Plough and Harrow, further down the road in Newtown, is a superb old boozer selling excellent ales and would be a great loss. Greenalls, who have a number of pubs in this part of town, blame falling custom for the closures. It isn't yet known whether the pubs will be sold de-licensed.

Still with Greenalls, rumour has it that the long-closed Travellers Rest in Hindley is to be converted into a set of apartments.

There is better news from Burtonwood. In Wigan centre, the Royal Oak, Standishgate, has removed the handpumps serving the keg beer, while the White Horse, still on Standishgate, has reportedly reverted to cask (as advertised outside). The beer still tastes a bit thin at times, though.

Meanwhile, in Standish, cask mild returned to the New Seven Stars on Preston Road. Smaller barrelage and a newly installed cooler should see the mild through the lean summer months. Standish is dominated by Burtonwood as they bought out the local brewery, J B Almond, in 1968. Jennings bitter has been taken off at the Queens Arms, Fingerpost, Aspull. However, it is on sale at the Black Horse, Elliot Street, Tyldesley. What with Greenalls, Boddingtons, Oldham, Wilsons, Holts, Tetleys and Thwaites thrown in as well, Tyldesley centre makes a fine pub crawl.

The Springfield Hotel, near 'Latics football ground, has added Walker best bitter (73p) alongside the ordinary bitter and mild (72p and 69p respectively).

Still with football, "battle royal" broke out between Wigan and Bolton fans over Easter weekend. Too bad it had to be in the Market Tavern, Mesnes Street. The damage came to £3,000, but by the following Wednesday the new windows were in place and the pub looked pretty much the same as it did before. Should you venture into the Market, the S&N YSB and IPA are recommended.

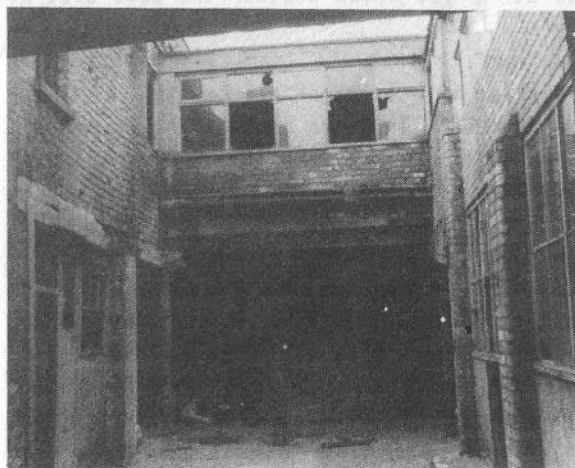
Wigan CAMRA branch are to survey the Matthew Brown pubs in Hindley. A liking for bottled Guinness or White Shield would be an advantage, as nearly all Brown's pubs are keg. Branch members hope to talk to the licensees about their willingness (or lack of it) to sell cask beer. We promise to nip into the occasional real ale pub and anyone out there who is interested would be very welcome. See Branch Diary for details.

The Minorca, Wallgate, Wigan, is to re-emerge as "Blair's" (an obscure reference to Orwell/Wigan Pier, perhaps?). At the moment, the interior looks like the inside of a spaceship and the only handpumps in sight

were those little ones that dispense wine. Nevertheless, one lives in hopes of cask Wilsons and all should be revealed by the next edition of WD.

Which is more than can be said of the Honeysuckle, Swan Meadow Road, Poolstock. Whitbread closed this pub down ages back and on a recent visit it wasn't anything like ready. Watch this space....

\*\*\*\*\*



## RAN OUT OF STEAM

One of Manchester's old breweries is now derelict and looks set for demolition. The Steam Brewery on the corner of York Street and Boundary Street East, Chorlton on Medlock, turned out its last brew some 85 years ago, but has remained intact down through the years. The brewery, which can be seen set back from Oxford Road

(left hand side going down, just past Grosvenor Street), was built in the 1850's by Thomas Clowes. A few years later Clowes took James Broadbent into partnership, and "James B Broadbent, Licensed Common Brewer" is still partly legible on the front of the building. The Steam Brewery was acquired by the Manchester Brewery Company in 1899 and brewing ceased a few years later. The structure of the old building has survived - two storeys around a central yard with cellars below - the last surviving example of one of Victorian Manchester's small wholesale breweries. The brick-vaulted cellars, with iron pillars under the yard, are impressive.

\*\*\*\*\*

\* WHAT'S DOING is edited by Neil Richardson, 375 Chorley Road, \*  
\* Swinton, Manchester M27 2AY. News, articles, letters, moans, \*  
\* etc, must arrive by the 20th of the month for inclusion in the \*  
\* next month's issue. \*

\* SUBSCRIPTIONS: Send cheque/PO for £1.90, together with your \*  
\* name and address, to Roger Hall, 123 Hill Lane, Blackley, \*  
\* Manchester, for 6 issues. (Cheques made out to "What's Doing") \*

\* BACK NUMBERS: 10p per copy. Send stamped addressed envelope \*  
\* to Roger Hall, address above. \*

\* To Join CAMRA send £7 to Membership, CAMRA, 34 Alma Road, \*  
\* St Albans, Herts AL1 3BW. \*

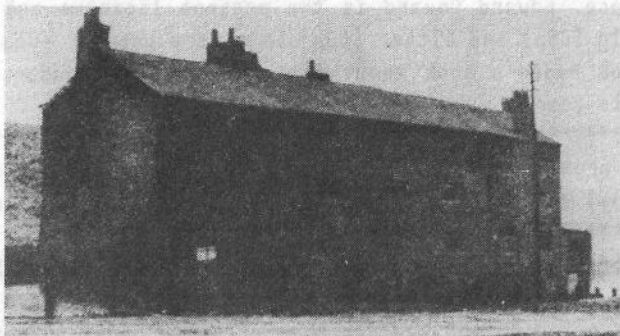
\*\*\*\*\*

# NOW & THEN

by ROB MAGEE

## No. 5 CROWN INN

72 WALSH STREET,  
CHADDERTON



The old photograph shows a derelict terrace of houses on Stockbrook Lane, off Stock Lane, Chadderton, built for the miners of Stockfield Colliery. Around 1869 the end cottage on the left became a beerhouse, the Colliers Arms, kept by Edward Norbury. The customers nicknamed the beerhouse the "Sump Hole" – the beer was said to come from the sump holes of the colliery drainage pumps!

In 1881 iron turner John W Pallister became landlord and changed the name to the Miners Arms. He was succeeded by Broadbent Nichols in 1890 and three years later the terrace was demolished to make way for Platt Brothers' railway sidings. The licence, together with Mr Nichols, was transferred in 1893 to new premises on Walsh Street – the present Crown Inn. Oldham brewers Jowett & Waterhouse acquired the pub in the 1890s and it became a Wilsons house in 1896.

It is said that a wooden sign was fixed into the entrance archway, proclaiming "Ye Old Sump Hole"; this was presumably removed when the porch was rearranged. For many years the Cowhill Mayor was elected at the Crown. Stockfield Colliery, which closed in 1916, was behind the Crown and in my time was used as the site for Cowhill Wakes. To the Crown's right were about twenty terraced houses and to the left the

railway bridge which was demolished about 1970. The bridge had deep scars in the wall made by the wheels of an engine which ran over the edge and into Stocks Lane, pulling wagons with it.

In recent years, landlords at the Crown have been Clifford Brown (until 1956), James Shaw (1956–80) and Derek Heap (1980–1984), who moved to the Navigation on Manchester Road. Moira J Ferguson was landlady in 1984/5.

Major renovations took place in





1982 and these were tastefully done, preserving the atmosphere of the place. Edward Coward is the present licensee and he sells handpumped mild (65p) and bitter (68p) in a very popular local.

(Rob Magee's book about the old pubs of Chadderton is due out later this year)

\*\*\*\*\*  
As promised (WD Feb), Arthur Lovell has reintroduced cask Wilsons mild (69p) at the Miners Arms, George Street, Oldham, and it's going well.

\*\*\*\*\*  
Some changes have taken place at the Black Horse (Robinsons), Werneth. The two small rooms to the left of the bar have been turned into a concert room and the pub has certainly benefitted from the change.

### NEW LOOK FOR BLACKLEY LION

Blackley's Red Lion, which dates back to 1858, has long been extended into the former stables, but after a further tarding up by Pennine Joke it reopened at the end of March as a Chef and Brewer house. There is no vault but a clearly defined games area can be found to the left of the bar. To the right, the bar doubles as a food counter serving the restaurant part of the pub. The Red Lion is now open plan, but the fact that it has been converted from what were two separate buildings means that the space is broken up into smaller areas by part walls and alcoves formed by seats. Quality furnishings and full carpeting create a comfortable atmosphere which makes the Red Lion busy and popular with a wide cross section of customers, albeit somewhat hampered by a main road position which makes parking difficult when the tiny car park is full. Cask mild is not available but both Wilsons bitter (74p) and Websters (76p) are served by handpump and are of excellent quality.

### WILSONS NEWS

The Prince of Wales on Bleasby Street, Oldham, has been sold de-licensed, whilst Tankards on Blackbury Road, Haslingden, which has been closed for some time, has been sold into the free trade. The buyer is Mrs Kay, tenant of the Robin Hood in Helmshore, who hopes to modernise the place and reopen selling John Smiths and/or Matthew Brown cask beers. The Cross Keys in Whitefield and the Springbank in Chadderton have been refurbished.

### QUIZ

Who won't talk to CAMRA? Who won't send a speaker to CAMRA meetings? Who, when you do arrange a meeting with them, sends you a long list of things that can't be discussed?

.....Boddingtons, naturally



## ORIGINAL SIN

In March 1983, amidst a blaze of publicity: TV adverts, glossy booklets, in-house newspapers and at meetings with CAMRA, Wilsons announced new names for their traditional cask conditioned beers - Original Bitter and Original Mild.

In the early 1970s, they admitted "CAMRA became vociferous. Arguing that local breweries should retain their individual identity and beers. We were caught in the middle. The aim (then) was to re-establish the Wilsons identity. Now (in 1983) we've renamed our traditional draught beers Wilsons Original Bitter and Mild, to remind the consumer of the beers' heritage. Both feature distinctive pump clip designs, which emphasise their traditional nature."

In Issue No.1 of "Brews & Views" they said: "Wilsons Original Bitter: a new branding for our famous traditional bitter which will distinguish this traditional cask-conditioned beer from its brewery-conditioned sister product. Designed to recreate the heritage and origins of this truly great beer."

In a leaflet on cellar magement, Original Bitter and Mild were described exclusively as cask-conditioned or "traditional" beers, needing special skills to keep them in perfect condition. Brewery conditioned beers were described simply as Wilsons Mild, Special Mild, Bitter or Newton Bitter.

At meetings at the brewery and elsewhere, CAMRA was assured that "Original" was a guarantee of cask-conditioned beer.

In the last year or so, however, Original Bitter has been turning up in the most unexpected places; small clubs, hotel bars, etc. Close inspection of the familiar logo shows the words "fine traditional beer" have been replaced by "brewed in Manchester". Recently Original Mild has also produced a mutation.

With the merger of Websters and Wilsons and the appearance here of Websters bitter, mild and the new Choice, the need is surely for clearer point-of-sale distinction between traditional and brewery-conditioned.

On a recent visit to Halifax, local CAMRA members tried to make this point to brewery spokesmen, without apparent success.

Come on, Wilsons, stick by your original convictions and promises and don't try to pass off a brewery-conditioned product by giving it a near-identical image to the real thing.

Pete Cash

## WIN A GALLON

There follows the shortlist of contenders for North Manchester's 1987 Good Beer Guide entries. All you have to do is to pick out those that were selected (29 in all) and name your favourite pub from amongst them. The list closest to the actual list will win the entrant a gallon of ale. Members of North Manchester CAMRA and their grandmas, aunties and wicked step-mothers can't take part. At the risk of another HQ wrist slapping, the selections and the name of the winner will be published in June's What's Doing.

### CENTRAL

Unicorn, Church Street  
Hare & Hounds, Shudehill  
Crown & Anchor, Hilton Street  
Marble Arch, Rochdale Road  
Wheatsheaf, Oak Street

### ANCOATS

Jolly Angler, Ducie Street  
Smiths Arms, Sherratt Street  
White House, Great Ancoats St  
Mitchells Arms, Holt Town

### NORTH MANCHESTER

Old House at Home, Blackley  
Golden Lion, Blackley  
Dean Brook, Moston  
Railway, Newton Heath  
Derby Brewery Arms, Cheetham  
Tanners Arms, Strangeways  
New Moston, New Moston

### WORSLEY

Royal Oak, Boothstown  
Kenyon Arms, Little Hulton

### IRLAM & CADISHEAD

Boathouse  
Railway

### SWINTON & PENDLEBURY

Farmers, Manchester Road  
Football, Swinton Hall Road  
Newmarket, Bolton Road  
Park, Worsley Road

Robin Hood, Bolton Road  
White Lion, Worsley Road  
White Swan, Worsley Road  
White Horse, Worsley Road

### SALFORD

Horse Shoe, Back Hope Street  
Borough, Encombe Place  
Duchy, Brindleheath Road  
Bricklayers, Ordsall Lane  
Eagle, Collier Street  
Union Tavern, Liverpool Street  
Wellington, Irlams o'th'Height  
Spinners, Oldfield Road  
Church, Ford Lane  
Albert Park, Great Clowes Street  
Swan, Eccles New Road  
Oxford, Bexley Square  
Old Ship, Chapel Street

### ECCLES

Albert Edward, Church Street  
Bridgewater, Liverpool Road  
Egerton, Worsley Road  
Lamb, Regent Street  
Queens, Green Lane  
Packet House, Liverpool Road  
Park, Monton Road  
Wellington, Church Street  
White Lion, Liverpool Road  
Duke of York, Church Street  
Royal Oak, Barton Lane  
Ship Canal, Barton Lane  
Stanley, Liverpool Road

## ROCK ON

Rockside Brewery in Sheffield opened in May 1985, brewing two traditional beers - Thurlstone bitter (1040) and Thurlstone Bell (1050). The brewery is interested in expanding and would like to hear from free houses in Greater Manchester which take guest beers. Contact D Winstanley on Barnsley 764536.





I've been positively inundated with correspondence in the last few weeks. Sir Thomas Duckfoot writes as sharply as crayon will allow, suggesting that I may be one of the four things wrong with What's Doing, the others being a repetitive typeface, blurred photos and long, rambling, verbose letters. The cheek! It's the last time I'll lend either of him my book "Cure Yourselves of Schizophrenia". From our subscription department, Royal Hall has forwarded a letter to which he has penned a note: "Why not clue us all in at the same time, Roop?" The letter in question is from Mr Ray Cottam, who asks for a "covering note explaining the Rupert Periwinkle section as it does appear to be a pointless part of an otherwise informative magazine." He also asks whether we know the nearest outlet for Courage's Imperial Russian Stout. I firmly believe that if people need to ask questions like that, they shouldn't really be reading What's Doing. Far better to try one of the lesser beer drinkers' magazines....

Which brings me to Mr Gaskell, an expatriate pie-eater, who's penned an epistle to Mr Nestfeather wittering on about constant mentions of Manky Ale - dirty washing in public and so on. I have always felt the need to crusade against the worst excesses of Campaign members and will continue to do so unless threats, blackmail or bribery prevent it. He should thank his lucky stars that there's been very little mention of adultery among tavern keepers or wife swapping among branch officials, which is rife. Nor have we mentioned the financial acumen of HQ which is virtually bankrupt after frittering money away on silly amber nectar shows. The mere mention of Manky Ale and Opening Tripe will encourage people to buy these wonder magazines and boost the deflated egos of Nora and Bert Tackler, Humphrey Dumpty and the silly celt. Buy a Manky Ale now before it's too late! There's a puff for you.

Perhaps its time to peg out some clean linen. I was delighted to see three stalwart members of our Campaign, who have not always seen eye to eye, together again. The occasion was the bye-bye crawl for Little Jim, who's gone to another tram company. Charlie Bass, Beinlos and the



Noble, having imbibed too freely of Slumley Parva Drabs, were seen outside the Ruins of Benghazi Restaurant, arm in arm, singing "Three Little Girls from School are We". What a pretty sight! I'm reliably informed that, as soon as he's paid £300 for loss of profits and written an apology in O Rhesus Negative, Beinlos will be allowed back in Leech's. Such is the price of reconciliation. \*The usual hogshead of Drabs is offered for photos of Tattlecopse's secret honeymoon in Tenerife.

\*\*Guess who turned up when Goosegrease & Dishwater wanted to flog off the Queens Leg to the free trade - Perry Drab's minion, Charlie Bass and a mysterious belligerent bantam.

\*\*\*\*\*

### ENTREPRENEURS' CORNER

Greenalls have put the Kings Arms, Bloom Street, Salford, on the market with licence. The pub, conveniently situated across the road from the Bloom Street doss-house, has attracted several prospective purchasers, Holts among them.

### SHUTTLE SHUFFLE

The Flying Shuttle (Thwaites), Clerke Street, Bury, reopened last month after refurbishing.

### TRY AGAIN

The Bridgewater in Stockport, which became a free house last year selling Holts, closed not long after winning a CAMRA Pub of the Month award. Despite this unfortunate coincidence, it reopened last month selling Tetleys and Jennings.

### NEW PUBS

There are plans for two new pubs in West Manchester. Boddingtons are to build new premises at 121-127 Moorside Road, Swinton, where they presently have an off-licence. Frank and Teresa O'Regan will soon be opening the "Chestnut Lodge", formerly the Greenbank Labour Club, Trafford Road, Eccles.

### SHORT SPAN

The Bridge on Pin Mill Brow has disappeared. Whitbread had allowed the pub to fall into disrepair but, after failing to find a buyer, did it up and reopened it. No doubt someone at Cook Street will get the chop for wasting a lot of money. Further up the road the Brick House (ex-Crescent) has also disappeared, and the Travellers Call, Ashton Old Road, is boarded up ready for demolition.

To the Editor:

375 Chorley Road, Swinton, Manchester M27

# LETTERS



## PARK HOTEL

Sir - Your piece about the Park Hotel last month was wrong. The price of bitter is still 62p in the lounge, 2p cheaper than the Drop Inn, and the Park is a proper pub into the bargain.

Park Regular  
(Groveling apologies - our database had a hiccup. The Park in Monton is, of course, an excellent pub, as evidenced by its continued appearance in the Good Beer Guide.)

## MANKY ALE

Sir - As a former member of the Wigan Branch Committee, now in exile, I am still an avid reader of your publication.

It is with some sadness, however, that I read each month of the constant references to "Manky Ale". I feel that it is very damaging for a CAMRA branch to wash its dirty laundry in public and openly criticise another CAMRA branch and publication.

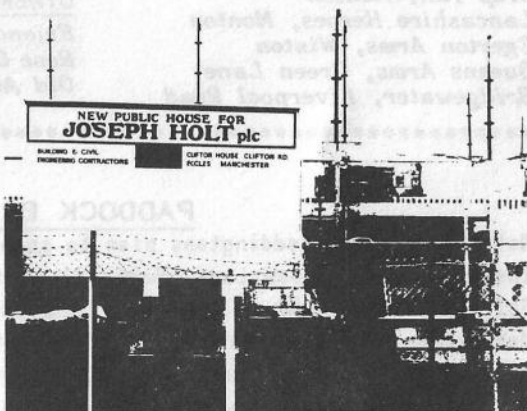
I now no longer consider North Manchester to be a model branch in view of these indiscretions, and would suggest that they be stopped before lasting damage is done to CAMRA's credibility.

Paul Gaskell, Oxford City Branch of CAMRA

\*\*\*\*\*

## COMPETITION

Holts don't seem to have a name for their new pub under construction in Little Hulton. What will it be? We already have the John Willie Lees and the Henry Boddington - will Holts follow suit with the Hon Ebenezer Drab, perhaps? Or maybe they'll be aiming for the fashionable cognoscenti - Periwinkle's Perch?



If you have a suggestion, let us know. Printable ideas will be passed on to the brewery! Whilst on the subject of names, we have it on good authority that young Perry is expecting an heir to the Drab empire in August. What will he/she be called? Winston Drab has a nice ring to it. Wellington Drab? Tarquin? Kevin? Suggestions please.



## WHERE TO GET YOUR WHAT'S DOING

### CITY CENTRE

Unicorn, Church Street  
Crown, Booth Street  
Crown & Anchor, Hilton Street  
Jolly Angler, Ducie Street  
Marble Arch, Rochdale Road  
Wheatsheaf, Oak Street  
Harp & Shamrock, New Mount St  
White House, Great Ancoats St  
Millstone, Thomas Street  
Smiths Arms, Sherratt Street  
Grey Horse, Portland Street  
City Arms, Kennedy Street  
Coach & Horses, London Road  
Bulls Head, London Road  
Castle & Falcon, Bradshaw St

### NORTH MANCHESTER

Derby Brewery Arms, Cheetham  
Old House at Home, Blackley  
Golden Lion, Blackley  
Duke of Wellington, Hr Blackley  
Top Derby, Rochdale Road  
Bluebell, Moston  
New Moston, New Moston  
Lancashire Heroes, Crumpsall

### ECCLES

White Lion, Liverpool Road  
Stanley Arms, Liverpool Road  
Park Inn, Monton  
Drop Inn, Monton  
Lancashire Heroes, Monton  
Egerton Arms, Winton  
Queens Arms, Green Lane  
Bridgewater, Liverpool Road

### SALFORD

Ordsall, Ordsall Lane  
Union Tavern, Liverpool Street  
Wellington, Bolton Road  
Spread Eagle, Regent Road  
Waggon & Horses, Bolton Road  
Coach & Horses, Eccles New Rd  
Broadway, Broadway

### SWINTON & PENDLEBURY

White Swan, Worsley Road  
White Horse, Worsley Road  
Newmarket, Bolton Road

### WORSLEY

Royal Oak, Boothstown  
Lancashire Heroes, Hilton Lane,  
Little Hulton

### IRLAM & CADISHEAD

Boathouse, Ferry Road

### BOLTON

Alma, Bradshawgate  
Dog & Partridge, Manor Street  
Winstons, Deansgate  
Sunnyside, Adelaide Street

### OLDHAM

Black Horse, Werneth  
Miners Arms, George Street  
Hark to Topper, Bow Street  
Kings Arms, Hollinwood

### OTHERS

Friendship, Scholes La, Prestwich  
Rose & Crown, M/c Old Rd, Bury  
Old Abbey, Guildhall St,  
Greenheys

\*\*\*\*\*

## PADDOCK BRIEF

Not before time, Boddingtons plan to spend some money on the lounge of the Paddock on Cross Lane, Salford. At the moment it must be one of Salford's worst pubs - a barn of a place with decrepit furniture and decoration. It will be closed for about 8 weeks and handpumps will replace the electric pumps when it reopens. Let's hope the atmosphere can be improved by a few bob well spent with no gimmicks.

## NOT AMUSED

The Victoria is the latest Wilsons pub to join those on Oldham Road boarded up by the brewery. The Lancaster and the Nelson are still closed. You'd think that Wilsons would make an effort to keep open pubs on the main road near the brewery - it can't really be a very

good advert. Perhaps they should flog them off. After all, the Alexandra, the Ancoats, the White House and that other place near Mamas don't appear to be doing too badly.

### SALISBURY PLANE

The Salisbury on Trafford Road (opposite the Docks), Salford, has been demolished after being boarded up for many months. In its heyday, the Salisbury was residential and busy with trade from the docks, but with the decline of the Ship Canal the pub became redundant. It will be missed (even though in recent years there was no real ale) for its fine architecture and woodwork. There are now no pubs on Trafford Road - the Trafford went a couple of years ago and the Clowes last year.

## BOOZERS LAMENT

*I have been asked in the past few months for a list of the public houses that used to exist in Blackrod, when the licence for all public houses was from 6 am to 10 pm. That total was 28 and the approx. number of dwelling houses totalled 500 with the highest census figures published in 1881 at 4,324. The vast majority of the public houses were owned by John Sumner's Haigh Brewery which closed in 1931 due to a take-over by Greenhall's, every employee receiving £10 for every year's service, and many had a total of 40 years. The take-over figure was £250,000 and it was a sad day for Blackrod's boozers when the brewery closed as it was known to be the finest beer in the North of England. The approx. population figure of the village today is given as 6,500 but only 5 public houses exist, plus 3 clubs.*

The following is a complete list of the 28 pubs.

Bee Hive Inn  
Scot Lane Inn  
Swan Inn  
Green Barn Tavern

Commercial Inn

Ridgway Arms Hotel  
Horse Shoe Inn  
Victoria Hotel  
Leigh Arms  
Red Lion Hotel  
Caldwell Arms

Three Crowns  
Royal Oak.  
Cross Keys  
Travellers Rest  
Church Inn  
Shoulder of Mutton  
Foresters Arms  
Ringers Arms  
Blackhorse Hotel  
Star Inn  
Boatman's Arms  
Farmers Arms  
Colliers Arms  
New Inn  
Cock Tavern  
Gold Diggers  
The Mill

Scot Lane. Demolished.  
Scot Lane. Now The Poacher  
Manchester Road. Demolished.  
Now Green Barn Hotel. Manchester Road.  
Manchester Road. Now British Legion Club.  
Station Road.  
New Street. Demolished.  
New Street. Dwelling House.  
Church Street. Demolished.  
Church Street.  
Church Street. Shop & Dwelling House.  
Church Street. Dwelling Houses.  
Church Street. Demolished.  
Church Street. Demolished.  
Church Street. Demolished.  
Church Street. Demolished.  
Blackhorse Street. Dwelling Houses.  
Blackhorse Street. Demolished.  
Blackhorse Street. Demolished.  
Blackhorse Street  
Chorley Road. Demolished.  
Aberdeen. Dwelling House.  
Dark Lane. Demolished.  
Little Scotland. Demolished.  
Little Scotland. Temp. closed.  
Little Scotland. Demolished.  
Hill Lane. Demolished.  
Factory Brow. Demolished.

Yours,  
L. Watkinson, Councillor & Town Mayor.





## Asian Corner



The latest addition to the numerous Chinese restaurants in the George Street area is the Heng Loy Fat on Princess Street. On the other side of Portland Street from the new Yang Sing, the Heng Loy Fat is a specialist Cantonese sea food restaurant. It does,

of course, sell the normal range of other dishes but there is a considerably enlarged seafood section on the menu. There are, for example, a dozen different shark's fin soups and dishes composed of prawn, abalone, crab, lobster, squid, scallops, whelks, frogs' legs and other exotic components. The Heng Loy Fat is more upmarket in terms of both decor and price than, say, Kais, the Woo Sang, the Pearl City or Charlie Chan's, and is therefore more suited to a leisurely meal than a quick chop suey after a night on the beer. Nevertheless, for the aficionado of Chinese food, it is highly recommended.

Sue Mei

\*\*\*\*\*



## Branch Diary

### WIGAN

Wed May 7 Matthew Brown Survey of Hindley. 8pm Bird in Hand (near the bus stop); 8.30 Balmoral

Wed May 21 Branch Meeting 8.30 Seven Stars, Wallgate, Wigan  
Contact Brian Gleave Atherton 892965 (h) Atherton 876200 (w)

### NORTH MANCHESTER

Wed 7 May. Bill's Pre-birthday Crawl of Irlam. 7.30 Nags Head (Vault); 8.30 Boathouse  
Wed 14 May. Newmarket, Pendlebury 8pm

Wed 21 May Branch Meeting, Waldorf, Gore Street, Manchester 8pm

Wed 24 May Train ride to Liverpool. 6.20 from Piccadilly or 6.30 from Victoria. Meet Vine, Renshaw Street, 7.30

Wed 4 June Social with Stockport & South Manchester branch. Mitchell, Ancoats, 8pm

Wed 11 June, Spanking Roger, Miles Platting, 8pm

Wed 18 June, White Swan, Swinton, 8pm

Wed 25 June Farnworth Survey. Bridgewater, Buckley Lane 7.30.

Contact: Roger Hall 740 7937

### BOLTON

Wed 7 May 8.30pm Branch Meeting Cross Guns (Walkers) Deane Rd, Bolton

Mon 12 May Thwaites Brewery Trip. 'Phone branch contact for details.

Sun 18 May 12.00 noon Social, Flag, Bromley Cross

Wed 4 June 8.30pm Branch Meeting George (Wilsons) Great Moor St

Sun 22 June Daisy Hill Social, 12.00 noon, Grey Man; 12.45 Three Crowns; 1.30 Rose Hill (The Bug)

Contact: David K Flewing 0204 389918 (h) 0204 75111 x207 (w)