

WHAT'S DOING



AUG
1986

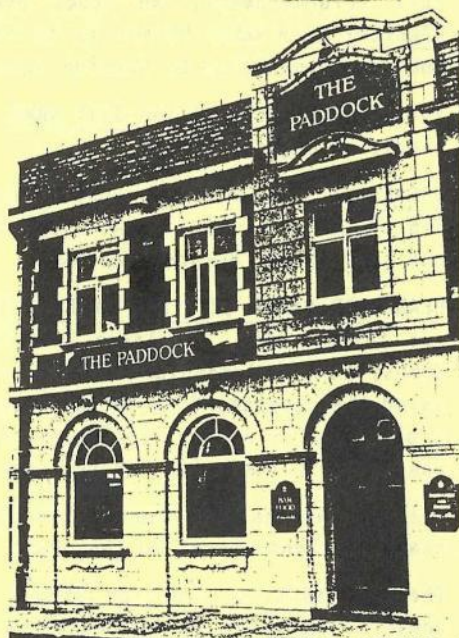
THE MANCHESTER BEER DRINKER'S MONTHLY MAGAZINE

SALFORD HIGGIES

Somewhat belatedly the Paddock on Cross Lane in Salford reopened at the beginning of July. Plusher than before, the former Swales Fusiliers Arms retains its stage and a small dance floor has been added.

The vault is still there and new features are wallpaper and matching furniture. Sadly, the revolving door has gone. Handpumped Higsons bitter has joined the Boddies mild and bitter and both beers are advertised outside.

Wonder if Wilsons - sorry, Websters - will ever do up the Corporation opposite?



PRESTWICH GAIN

The Church Inn, Church Lane, Prestwich, is at long last back on real ale. The pub has been closed for some time whilst John Smiths modernised and extended the premises. The result is quite pleasing, and traditional John Smiths bitter is on sale.

CITY DESK

PETER O'GRADY



Webster's Choice now seems to be a permanent "attraction" at the WAGGON & HORSES, Southgate Street, Manchester. On my last visit the beers on offer (mortgages available) were Wilsons bitter, Ruddles bitter and Choice.

The RISING SUN on Queen Street has just added Choice to its full range of lagers and Wilsons bitter.

Despite what you may have read elsewhere, the ROYAL GEORGE on Lever Street still has Wilsons beers, as Leo King pointed out in WD July. In fact, the Wilsons must be going so well that the brewery are having a "cut price" promotion for Webster's beers. The cads. (Drink up the cheap stuff while it lasts and then go back to Wilsons!)

The KENSINGTON (Wilsons) on Newton Street closed on July 26th for a full refurbishment. No doubt even more Webster's is on its way. NICKLEBY'S on Dale Street is to follow suit later in the year. Both pubs are controlled by Pennine Joke.

The refurbishment at the CITY ARMS, Kennedy Street, is to begin in the middle of August.

OSCARS on Cooper Street, which closed "for a few days" at the beginning of June, is still shut. Hooded men have been witnessed shovelling out tons of the dreaded asbestos.

"LANDLORD SAVES CITIZENS FROM POISONOUS SNAKE!!" or so the story went (at third hand). On closer investigation it was revealed that Peter Gibbs, hero and popular landlord of the WHEATSHEAF on Oak Street, had saved the populace from an 18" long water snake which had escaped from a pet shop in nearby Tib Street. A few years ago a python escaped and was found in the cellar of the same pub!

Bulldog Taverns have opened the STUDIO CAFE BAR on Piccadilly, underneath Hitchens Store. Do they have draught beer?

The CHURCHILL on Chorlton Street (Greenalls bitter on handpump) is another pub about to be renovated. It won't close, though - they're doing one bar at a time.

BUNKHOUSE

Greenalls have applied for permission to build a 27-bedroom extension on to the charismatic Narrowboat in Swinton. Doubtless punters will have to kip in toy barges and they'll call it the Narrow Boatel. Drinkers will still give it a wide berth. Weary residents, fortunately, will be able to get a decent drink of Holts in the White Swan across the road, before dosing down for the night.

CIDER FESTIVAL

The third annual Greater Manchester Cider Festival was recently staged by Robin Bence at the Duke of York, Eccles, and the Crown & Anchor, Manchester. About 20 farmhouse ciders and perries were available - in half pints only.

North Manchester CAMRA's July meeting at the Duke was addressed by Mr Mike Fildes of Bulmers. After a short video showing how Bulmers had grown from a small family concern to become the world's largest cider producer, there was a lively question and answer session. It was heartening to learn that, despite their size, Bulmers use only home-grown apples, with no reliance on imported fruit or apple concentrate.

Samples of Bulmers' Still and Medium Draught ciders were kindly provided, together with bottled Original Dry and a new product, "1080". This half-pint bottled cider is said to be "double fermented" for extra strength, but the unusual name does not indicate the gravity, which is nearer to 1066. (Curiously, ciders do not have to carry any indication of gravity or alcohol content, which must be unique today.)

The assembled company, although not habitual cider drinkers, generally voted the "1080" the best of the four drinks. This despite its not being "traditional" in the CAMRA definition.

Our thanks go to Robin for staging the event and Mike for an entertaining evening. Traditional cider is recognised and supported by CAMRA and it is good to see it made more widely available outside its native territory.

FOOTNOTE

The assembly of so many farmhouse ciders and perries in one place provides a rare opportunity for direct comparison. A few unselfish members bravely undertook this task on the first evening of the festival. Their comments and "scores" out of 10 are given below.

LONG ASHTON DRY - 3 - bland and uninteresting - not much taste of apples.

PLUMTREE DRY - 4½ - plenty of character but mainly due to acetaldehyde (an oxidation product) - difficult to finish the half-pint.

THATCHER'S DRY - 5 - unremarkable.

SUMMER'S MEDIUM DRY - 6 - tasty.

WESTON SWEET PERRY - 6½ - good but very sweet.

SYMONDS MEDIUM PERRY - 7 - excellent fruity taste.

SYMONDS SCRUMPY JACK - 8 - the best of the ciders sampled, good fruity character.

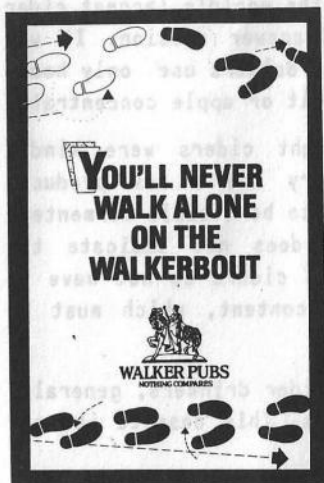
SUMMER'S PERRY - 8 - Generally agreed to be very good and with unusual overtones which were variously described as "brandy", "rum" and "muscatel grapes".

WESTON'S VINTAGE - ? - sold out before we could try it!

Pete Cash

WALKERBOUT

Peter Walker are organising a "Walkerbout" promotion - visit 16 Walker pubs, get your passbook stamped and claim a "Walker leisure bag", a Peter Walker guide and a free pint. It's not a lot for all that supping, but it gets you out of the house. There is a choice of four trails - the Greater Manchester area trail includes such pubs as the Silverwell in Wigan, Kings Arms in Lowton, Howcroft in Bolton and Boars Head in Leigh. The pass-books can be had from most Peter Walker pubs.



BASS BOOST

Mainly keg Market Street, Farnworth, will be much improved later this month when draught Bass appears at the Freemasons.

IRLAM NEWS

Following the article in WD June, I understand Wilsons/Websters have decided to improve the cellar facilities at Higher Irlam Social Club. When the work is done, let's hope the members will be served with quality, cask-conditioned beers at all times rather than the inconsistent, somewhat lukewarm beer they've been receiving. The centre of Irlam has seen a traditional mild comeback. Following the introduction of Boddies mild at the Railway, the White Horse has brought back handpumped Tetley mild.

Bill Collier

LESS BREWERIES

Brewing has now ceased at Newton Heath and the knacker's men have been in to dismember the corpse. Will Wilsons' soul live on in Halifax? Fat chance! Meanwhile Matthew Brown, still under pressure from Scottish & Newcastle, have closed their Carlisle Brewery and switched production to Workington. Other breweries under threat include Wem, Shipstones and Davenports. How long Greenalls will keep them open when Wilderspool is running at only 60-odd percent of its capacity is anybody's guess. And how much longer will Boddies operate four breweries in the North West?

WIGAN & DISTRICT

DAVE WHITE

The Whitesmiths Arms, a Boddingtons pub in the centre of Wigan, has closed whilst awaiting a new licensee. The Whitesmiths appeared in the Good Beer Guide for many years and still sold the cheapest pint in town - 64p mild, 66p bitter. But a change of image was vital. Let's face it, trade at the Whitesmiths was restricted by the reputation of its clientele and the AIDS scare just about sealed its fate.

As for Bodfans, they are advised to travel out of town for Manchester's favourite brew. Their nearest pub to the town centre, the Bowling Green at Newtown, merely confirms what people have been saying about Boddies for the last few years.

Still in Wigan, Addlestone's "serious" draught cider is now available at the Raven Hotel, Wallgate. An initial request for "cider" was met with the obligatory lurch towards the fizzy Gaymers Olde English, so be sure to specify. Recent attempts to sell draught Bass and Burton Ale at the Raven came to naught and, at 88p a pint, the Addlestons could well go the same way. The Walkers mild and best bitter, however, are always on top form.

The Market Tavern, Mesnes Street, reopened on 17th July. It hasn't changed much inside, but the jukebox appears to have got louder. YSB and IPA are still available and have been joined by Youngers No.3.

The Old Pear Tree in Frog Lane is well known locally for its darts team. Recently, the lads took part in a 24-hour darts marathon, playing non-stop. For their efforts, they hope to have raised nearly £1,000 for cancer research. As for the Pear Tree itself, this Burtonwood pub will celebrate ten years in the Good Beer Guide in 1987.

Nearby, Jennings bitter is now on sale at the Bird i'th'Hand, Gidlow Lane.

The Manley Hotel, Manley Street, Ince, reopened recently. This ex-GW pub, later a rugby club, has been shut for several years. Bass are now running the show and the nearest they've got to real ale is the Guinness bottled at Burton-on-Trent. Thankfully, the Bird in Hand (Burtonwood) and Anderton Arms (Thwaites) are within walking distance either way from the Manley.

The Welcome Traveller, a Wilsons house in Elliot Street, Tyldesley, has been converted to handpumps.

More news on Greenalls. Two pubs in the area thought to be all-keg are actually selling cask bitter. They are the Star Inn, Bank Brow, Roby

Mill, and the Foresters Arms at Shevington Moor. The mild in both is still fizzy, though. On the minus side, the George & Dragon, Main Street, Billinge, has gone the way of all renovated Greenalls houses.

The Dray King, Long Lane, Hindley, has gone over to handpumps to serve the Thwaites bitter and mild. If you can put up with the younger set, hang up your anorak and enjoy the ale - recommended.

NEWTON SHOW

This year's Newton Town Show takes place on Saturday 9th August (11.30-5.30). CAMRA will once again be providing the beer - 10 real ales (including Taylors, Moorhouses, Ansell's, ABC and Halls Harvester) and traditional cider. Other diversions include a half marathon, horse jumping and all the fun of the fair. The show will be held on Selwyn Jones Lower School ground - on the 39 bus route; trains to Newton or Earlestown stations.



WILSONS MOVES

Alan Johnson of Welcome fame is moving from the Ordsall Hotel to the Black Boy in Eccles. The tenancy of the Ordsall is being taken by the licensee of the Star in Eccles.

WHAT'S DOING is edited by Neil Richardson, 375 Chorley Road, Swinton, Manchester M27 2AY. News, articles, letters, moans, etc, must arrive by the 20th of the month for inclusion in the next month's issue.

SUBSCRIPTIONS: Send cheque/PO for £1.90, together with your name and address, to Roger Hall, 123 Hill Lane, Blackley, Manchester, for 6 issues. Cheques made out to "What's Doing".

BACK NUMBERS: 10p per copy. Send stamped, addressed envelope to Roger Hall, address above.

To Join CAMRA send £7 to Membership; CAMRA, 34 Alma Road, St Albans, Herts AL1 3BW.

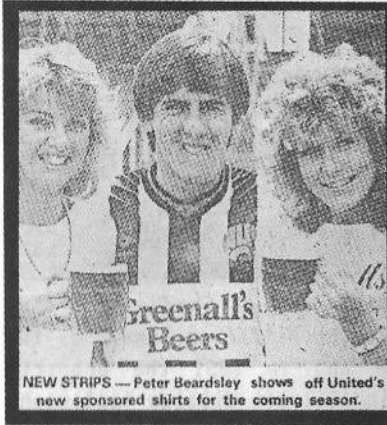
WHAT'S DOING ADVERTISING RATES: Enquiries to Phil Pearson, 16 York Street, Atherton, Manchester M29 9JD. Atherton 896569.

Full page £25: $\frac{1}{2}$ page £20: $\frac{1}{4}$ page £15: $\frac{1}{8}$ page £7.50

Discount for 6 insertions: Full page £20: $\frac{1}{2}$ page £16: $\frac{1}{4}$ page £12: $\frac{1}{8}$ page £6

Other contributors to this issue: Duncan Roberts, Rob Dunford, Roger Hall, Brian Gleave, Eddie Cash, Stewart Revell, Dave Fleming. The inclusion of a real ale list has meant some articles have had to be held over.

FOOTBALL CRAZY



The news that Greenalls are to take over sponsorship of Newcastle United FC from Newcastle Breweries must be depressing wherever you live. According to Allan Gilmour, their representative in a television interview of 2nd July, Greenalls are spending all that money because (a) they are seeking to expand into the North East, (b) Newcastle United are a good club and (c) Greenalls' customers are so hooked on the stuff that to drink it they'll even venture into Geordieland and become loyal Magpies' supporters.

(a) is, of course, yet another example of a big brewer seeking to market a "national beer" - with all the indifference to regional tastes which that involves. (b)? So they are, but how condescending! And what a tactless second to the profit motive! Clearly Greenalls are going to be genuinely interested in the club's fortunes. (c)? Oh, dear! To do the man justice, he did simper as if he knew how silly it sounded. Presumably Newcastle Breweries will not be offering to sponsor any North West clubs in return. After all, there are too many good ones to choose from.

LOOKALIKE

Followers of professional wrestling may have noticed the striking similarity between Arthur Swindells, landlord of the Crown Hotel, Booth Street, Manchester, and wrestler Paul Mitchell. They are one and the same person - Arthur used the pseudonym Paul Mitchell before he retired from the sport and he now runs a busy pub serving excellent handpumped Stones and Bass.

BACK TO WILSONS

A few weeks ago five more Pennine Host pubs were transferred back to Wilsons. They are: Rovers Return, Salford; Greens Arms, Clayton; Britannia, Irlams o'th'Height; Metropole, Beswick; White Lion, Rooley Moor Road, Rochdale.

GETTING ADDLED

The new Addlestons cask conditioned cider has been put on trial in 20 Walkers pubs. Here are a few of them: Bucks Head, Abram; Hare & Hounds, Bury Road, Bolton; Miners Arms, Astley; Ainsworth Arms, Bolton; Blue Lion, Newton le Willows; Howcroft, Bolton; Market, Farnworth; Raven, Wigan.



NOW & THEN

by ROB MAGEE

No. 8

CHURCH INN

23 CHADDERTON FOLD
CHADDERTON



The Church Inn, on the banks of the River Irk at Chadderton Fold, opened as a beerhouse around 1841, with Joseph Miller as landlord. The pub became fully licensed around 1846 and in 1851 the property included a stable and a shop. Licensee in 1861 was William Tomlinson, followed by Thomas Scholes (1868-74) and James Hoghton (1874-75). John Tomlinson and then his son James followed, and it was James who sold the Church Inn to Oldham Brewery in 1900. The brewery installed John Booth as their first tenant, and he stayed until 1909.

After a succession of tenants, Sam Boardman arrived in 1934 and he stayed until 1962. It was during this time that major alterations were made at the pub and the top storey was removed. The Church Inn was originally a large three-storey building with eight windows to the front and nine in the gable end, making it look like a small riverside mill. It was also attached to a row of terraced houses.

Sam Boardman was succeeded by Norman Pugh (1962-1967) and the present landlord, Edward Gilmore, took over in 1967. Around 1976 the Church Inn was extended into the adjacent cottage and other improvements were made. Happily, the bowling green has remained untouched and must be the only green belonging to a pub left in Chadderton.

A HISTORY OF CHADDERTON'S PUBS



Rob Magee

£2

The old Church Inn appears on the cover of Rob Magee's "History of Chadderton's Pubs". The illustrated book contains the histories of over 50 licensed houses which have existed in the Chadderton area and is on sale in all good bookshops - or it can be had by post from the publisher, Neil Richardson, 375 Chorley Road, Swinton, Manchester, for £2.25.



Believing themselves to be literary geniuses, Royal and Eddy went off to an Eminent Persons discussion group in Poxford where famous Campaign members had assembled. Both myself and Ruffley Dikheit were invited to accompany them. Unfortunately, as we were passing through Shakespeare country, Ruffley began his diatribe against "heightism" - the irrational prejudice against persons of restricted growth. Royal quickly realised that this wouldn't go down well with the self-styled literati - with the exception of the tiny but perfectly formed Ms Prune, they are all overtaill. Consequently we were dumped unceremoniously outside a genuinely old Hook Norton pub. We had to wait for an hour before we could ask the fawning ingratiating landlord for a pint of bitter from the wood by name (© A Cunningsod, 1976)

Meanwhile the "think tank", led by a former boss person whose name escapes me, indulged in mutual backslapping and the gratification of sub-megalomania. Boris Pratt and Nellie wanted an amber nectar vademecum with only 12 pubs in it but wonderfully presented, much like a gift-wrapped turd. Bernie Mitten was nearly persuaded to change What's Brewing into a sort of Sun for drunks but this failed to get much support. Tom Duckfoot thought that most of the entries in the guide were dreadful and that all local guides should be 100 guineas each. Kevin Thrust didn't do much except to extol the virtues of the '87 guide front which, by all accounts, looked more like an Edwardian curate's book of marsh grasses. Oh yes, and to reinforce Mr Duckfoot's point, he took the brainstrust out to a GBG hostelry of many years' standing which sold Lawrence's from the wickets which was more like brackish draff than beer.

Ruffley and myself did much better, We got high in the High, then went to tea with the master of our old college where we imbibed freely of the vintage port until we were collected by Royal and Eddy, who were over the moon about licking the boots of their betters and delighted that What's Doing was considered wonderful "apart from your demented tripe, Roop, which we'll really have to review" and that Manky Ale was nearly as bad as Pudtoper. I think they made that up. I'm still trying to fathom out whether the story Ruffley told me about the ethnic

origins of a certain celt was a dream or reality. I must ask him again when he's sober again.

* * * * *

Why is one of Grotley's favourite amber nectar shops full of Marxist paedophiles all of a sudden? Can it have anything to do with the CAMRA articles in the Lesbo Leninspart Express extolling the virtues of the hostelry to its readership of non-heterosexist pinko weirdoes?

CHEAP TRICK

Watneys evidently find it difficult to flog Websters products over here. Green Label was on special offer in June, only 58p at the Moss Rose in Kearsley.

FREE HOUSE NEWS

Renovation at the old Imperial (ex-Wilsons), just off Hyde Road, Gorton, is progressing but it looks like it will be several weeks before the pub reopens as a free house.

CLUB CORNER

The Barrfield Club (a gentleman's club with around 200 members), Barrfield Road, Pendleton, now has Youngers IPA (64p a pint) on hand-pump for the summer. The No.3 is having a rest for a while.

JOLLY WINTON

Traditional Wilsons bitter is now on sale at the Jolly Carter, Winton, a comfortable pub which was renovated about eighteen months ago. The Jolly Carter hadn't sold real ale for donkeys' years, but that's all changed now thanks to landlord Eric Ogden (formerly of the Woolpack, Pendleton). It's bitter only at present - let's hope traditional Wilsons mild will be installed soon.



The conversion of the Jolly Carter raised the Greater Eccles score to 43 real ale against 8 non-real ale pubs. However, a few weeks ago John Smiths opened a new pub in the old Greenbank Labour Club premises in Eccles. It's called the Chestnut Lodge. No real ale. Oh, well.

ANCOATS ATTRACTIONS

The White House, Great Ancoats Street, now has a Beer Garden at the rear. Further up the road, Keith and Barbara Bee have taken over the tenancy of the Crown & Kettle.

"HE HATH A SURFEIT OF DRABS"

A side-effect (or sole purpose, depending on your point of view) of that most splendid of pastimes, beer drinking, is drunkenness. The state of obfuscation brought on by imbibing too freely can be described in many ways, some of recent origin and some much older...



The word "drunk" and phrases like "on the drunk", "drunk as a wheelbarrow" and "quite the gay drunkard" date from the late nineteenth century; in 1883 the charge of being "Drunk and Disorderly" was introduced. From about the same time came descriptions such as "unable to see a hole in a ladder", "drunk as a rolling fart", "so drunk he opened his shirt collar to piss".

"Plastered" comes from 1916 - "plastering" was originally slang for shattering a bird with shot; during the Great War it was used to mean "shelling heavily" and then "plastered" became army slang for "drunk".

A sixteenth century drunkard was an "ale knight" and "drunk as a rat" first appeared in print in 1542; a "rat" was a drunken person taken into custody. From the seventeenth century come expressions like: "One whom the brewer's horse hath bit", "The tavern-bitch hath bit him on the head", "He hath swallowed a tavern token", "He is bit by a barn weasel", "He hath seen the French King" and "He hath been at the scrivener's and learned to make indentures".

Of course, new expressions are being coined all the time - perhaps a Periwinkle-ism will eventually make the Oxford English Dictionary!

LONGER HOURS

Maxims, the Vaux pub on Bradshawgate, Bolton, has been granted a licence to serve until 1.00am on Thursdays, Fridays and Saturdays.

DROP INN

Monton's free house is now selling Hydes bitter at 55p a pint. Not bad, and the Holts is still selling at 60p. The Jennings has gone.

FARNWORTH & KEARSLEY



Perhaps because of lack of competition from local brewers, Farnworth has less real ale than adjoining areas like Swinton and Whitefield. There are no Holts, Hydes or Robinsons pubs and only two Boddies houses. 18 of Farnworth's pubs serve only keg beer, including all 8 Bass pubs. Tetley Walker have a reasonable record, with 8 out of 11 outlets serving traditional beer, and even Greenalls don't fare too badly with 3 out of 6 on real ale. 3 of Whitbread-Chesters' 5 pubs sell no real ale. All the most awful places, like Bananas and Brandos, sell keg beer - perhaps a good thing for those who prefer genuine pubs and good beer.

One or two pubs stand out. The Market, which for some reason is not included in the Greater Manchester beer guide, is a much improved Walkers pub in the heart of Farnworth - well worth a visit. The Clock Face, near the motorway, "exudes quintessential pubness at its most manifest" - not many of them left, particularly in Farnworth.

Down in Ringley, the Lord Nelson has shown some progress

Top: White Horse, Railway and non-real ale Moses Gate Hotel
Right: Hare & Hounds



but it's still not the pub it was when Percy had it. Another Thwaites pub - the Church - has maintained the same cosiness which it enjoyed for many years as a Greenalls pub.

The Shakespeare, with its 3 rooms and lobby, has a comfortable atmosphere with plenty of wood panelling and brasswork. It's a pity that handpumped Original is not available to augment the Greenalls mild and bitter. Sam Smiths opened up the Bridgewater a few years ago but the character has been retained. Unfortunately only the OBB is real ale.

Prices in Farnworth are not excessive, considering the absence of Holts, although recent increases by Greenalls and Tetley may have changed that, bringing their pubs in line with the somewhat overpriced Chesters outlets.



A tour of the area could include the Clock Face, the Bridgewater, the Bradford, the Market, the Britannia and the Church; a trip round Kearsley could start in the Moss Rose, taking in the Antelope and the Spread Eagle on Manchester Road. Dropping down into Ringley down Slackey Brow, the athletic toper could also

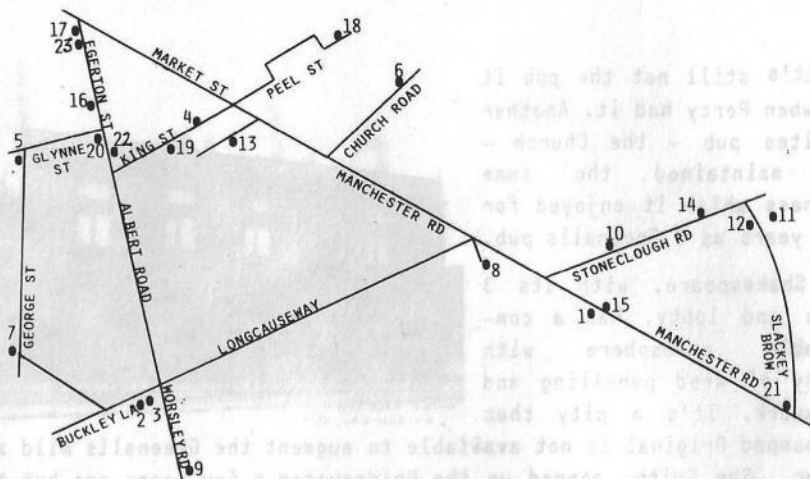
pay a visit to the Lord Nelson and the Horseshoe before making his way back to the main road via the Market Street Tavern and the Hare and Hounds. An ideal finishing spot would be the Clock Face.

REAL ALE IN FARNWORTH & KEARSLEY

All prices correct at 25.6.86

1 Antelope	Manchester Road	GW	M69,B72(E):Orig75(H)
2 Bradford	Buckley Lane	Boddingtons	M66,B69(H)
3 Bridgewater	Buckley Lane	Sam Smith	OB67(H)
4 Britannia	King Street	Chesters	B73(H)
5 Canary	Plodder Lane	Chesters	B74(H)
6 Church	Church Road	Thwaites	M70,B72(H)





7 Church	New Bury	Walkers	M66,B68(H)
8 Clock Face	Old Hall Street	Tetley	M68,B71(H)
9 Half Way House	Worsley Road	Boddingtons	M64,B72(E)
10 Hare & Hounds	Stonecough Rd	Tet	M72,B73(E):Jenn70(H)
11 Horseshoe	Ringley	Thwaites	M70,B72(E)
12 Lord Nelson	Ringley	Thwaites	M68,B70(H)
13 Market	Brackley Street	Walkers	M68,B72(H)
14 Market Street Tavern	Stonecough	Wilsons	B70(H)
15 Moss Rose	Manchester Rd	Wilsons	M68,B70(H):Websters GL68,YB72(H)
16 Park	Egerton Street	M Brown	M67,B70(E)
17 Railway	Egerton Street	Greenalls	M69,B72(E)
18 Rawsons	Peel Street	Burtonwood	M69,B71(E)
19 Saddle	King Street	Tetley	M70,B74(H)
20 Shakespeare	Albert Road	Greenalls	M70,B72(E)
21 Spread Eagle	Manchester Road	Tetley	M70,B72(E)
22 White Hart	Albert Road	Tetley	M71,B72(E)
23 White Horse	Egerton Street	Tetley	M72,B75(H)

FARNWORTH & KEARSLEY PUBS - A BIT OF HISTORY

Following on from the survey, here is some idea of what previous generations might have found. This article is based on directory entries and doesn't take account of where pubs were knocked down and rebuilt - for example, the Golden Lion (now Bananas!) on Gladstone Road was once on the other side of the road and the present building is (was!) at least the third to bear that name.

Of the five licences in Farnworth and Kearsley in 1800, three are still with us - the Golden Lion, the Black Horse and the Lord Nelson, Ringley (then the General Howe) and those of a certain age will remember the other two, the Bowling Green on Market Street and the

Unicorn (right) at Spindle Point. The Three Arrows (now the Antelope) appeared in 1806 and the Three Crowns (now gone) and the Horseshoe at Ringley in the early 1820s. Both the Church Inn on Church Road (formerly the St John's Tavern) and the Royal (once the Vitriol Makers Arms) were there by 1834. The Beerhouse Act had just been passed then and Farnworth already had three beerhouses; one of these probably



became the Nut Inn, which stood almost opposite the Queens on Market Street. Two years later there were 11 beerhouses in the area, including the Grapes at Stoneclough and another nearby and the Wagon and Horses (now gone) on Manchester Road, Kearsley.

By 1853 there were 19 beer retailers and three public houses in Farnworth, 14 beer retailers and 7 public houses in Kearsley, and this number changed little for the rest of the century.

The 1922 list includes additional pubs built as outlying streets like Glynne Street and Egerton Street were developed, but in other respects it is very similar to a list of 1876. Five pubs named in 1876 had gone - the Nut Inn, the Horse and Jockey on Market Street (became Rose & Crown?), the Red Lion and Lord Raglan on King Street and the Albert on Albert Road. All the pubs listed on Albert Road were there in 1843, as were the two at Dixon Green, the Artillery Arms on Queen Street and at least one on King Street.



Today there are 41 pubs in Farnworth and Kearsley. In 1922 you could have visited 58 - if you had the stamina. And if you still wanted some to take home, you could have visited any one of 66 off-licences!

Left: The original Church Hotel on Blindsill Road, New Bury.

FARNWORTH AND KEARSLEY - THE PUBS IN 1922

MARKET ST, FARNWORTH

122 Bowling Green
158 Queens Hotel
85/87 Travellers Rest
56 Wellington
154 Bulls Head Hotel
42/44 Victoria
70/72 Freemasons
65/67 Rose & Crown

102 One Horse Shoe

HIGHER MARKET STREET

57/59 Black Horse
25/27 Old Three Crowns
20 Lord Nelson Inn
10 Post Office Inn

MANCHESTER RD, KEARSLEY

336 Unicorn
14-18 Antelope Inn
2 Bird i'th'Hand
245 Man & Scythe
21 Starkie Arms
454 Unity Brook
313 Spread Eagle
1 Moss Rose

BOLTON RD, KEARSLEY

98 Wagon & Horses
217/9 White Horse

SLACKEY BROW

77-79 Miners Arms

STONECLOUGH & RINGLEY

Lord Nelson
Horse Shoe
Grapes, 47 Market St
Market St Tav. 131 "
Hare & Hounds, 13 "

OLD HALL STREET

63/65 Clock Face

CHURCH ROAD, KEARSLEY

61 Church Hotel

PEEL STREET

133 Rawsons Arms

KING STREET

34 Britannia Inn

53 Saddle

BRACKLEY STREET

149/51 Brackley Arms
11-15 Market Hotel

QUEEN STREET

29/31 Artillery Arms

BRIDGEWATER STREET

71/73 Bridgewater Arms

BUCKLEY LANE

47 Bradford Arms

27 Bridgewater Hotel

ALBERT ROAD

142 Royal
96 Waggon & Horses
73 Kings Arms
67/69 White Hart

GLADSTONE ROAD

18 Golden Lion

EGERTON STREET

78 Egerton Arms
2&6 Railway Hotel
182 Park Inn
12 White Horse

MOSSFIELD ROAD

2 Kings Arms
12/14 Grapes Inn

GLYNNE STREET

1 Shakespeare Hotel
61 Greenbank Inn
39/41 Church Inn

BLINDSILL ROAD

6 Church Inn

WORSLEY ROAD

69 Half Way House

LOWER ST, NEW BURY

35/37 Spinners Arms

BOLTON RD, MOSES GATE

5 Moses Gate Hotel



Branch Diary

NORTH MANCHESTER

Wed 13 Aug White Lion, Eccles, 8pm

Wed 20 Aug Branch Meeting, White Swan, Swinton 8pm

Wed 27 Aug Trip to Buxton. 7.15 train from Piccadilly

Wed 3 Sep Irlams o'th'Height Crawl. Red Lion 7pm, Britannia 8.30

Wed 10 Sep Harp & Shamrock, New Mount Street, Manchester 8pm

Fri 12 Sep Rochdale Crawl with Rochdale, Oldham & Bury branch. 8pm Cemetery, 8.30 Merrie Monk.

Wed 17 Sep Branch Meeting, Crescent, Salford 8pm

Contact Roger Hall 740 7937

5TH
EDITION

AT JUNE 1986

REAL ALE in ROCHDALE



INCLUDING HEYWOOD, MILNROW, MIDDLETON, LITTLEBOROUGH

*** KEY ***

M=Mild B=Bitter
SA=Strong Ale
E=Electric pump
H=Handpump
G=Gravity
BASS BEERS...
D/BASS=Draught Bass
BB=Best (bitter)
DM=Dark (mild)
LM=Light (mild)
ST=Stones Bitter
WHITBREAD BEERS...
DB=Duttons Bitter
CB=Chesters Bitter
TB=Trophy Bitter
CE=Castle Eden Bitter
Other Breweries...
JENN=Jennings Bitter
 (Tetley Pubs)
JBA=Almonds Bitter
 (Burtonwood pubs)
HART=Hartleys Bitter
 (Whitbread pubs)
PED=Pedigree (Marstons
 pubs)
OBB=Old Brewery Bitter
 (Sam Smiths pubs)
TAD=Tadcaster bitter
 (Sam Smiths pubs)



ROCHDALE AREA (Including Castleton, Bamford, Norden, Healey and Smallbridge)

Abbey Inn	Redcross Street	Centre	Tetley	JENN(H)
Albert	Spotland Road	Centre	Burtonwood	M,B(H)
Albion	Whitworth Road	Healey	Whitbread	CE(H)
Alpine Ayingerbrau	Gasthof Whitworth Road	Centre	Sam Smith	OBB(H)
Baileys Arms	Whitworth Road	Centre	John Smiths	B(H)
Baths	Smith Street	Centre	Boddingtons	M,B(E)
Baum	Toad Lane	Centre	Boddingtons	B(H)
Birches	Market Street	Healey	Bass	D/BASS(E)

Blue Pits	Manchester Road	Castleton	Lees	M,B(E)
Bonnie Dundee	Fishwick Street	Lower Place	Boddingtons	B(E)
Bridge Inn	Manchester Road	Castleton	Thwaites	M,B(E)
Bridge Inn	Edenfield Road	Norden	Bass D/BASS,DM(E)	
Britannia	Jermyn Street	Centre	Wilsons	B(H)
Brown Cow	Edenfield Road	Norden	Whitbread	DB(H)
Bulls Head	Halifax Road	Centre	Tetley	JENN(H)
Brunswick	Baillie Street	Centre	Thwaites	M,B(H)
Burns Tavern	Norden Road	Bamford	Bass	DM,ST(H)
Blue Ball	Edenfield Road	Norden	Wilsons	M,B(H)
Cemetery	Bury Road	Roch Valley	Ruddles, Boddies	M,B(H)
		Taylors, Theakstons, Thwaites + guest beer		
Citizen Inn	Drake Street	Centre	Boddingtons	B(H)
Castle	Manchester Road	Centre	Wilsons	M,B(H)
Cross Yates	Whitworth Road	Centre	Holts	M,B(H)
Commercial	Manchester Road	Castleton	Bass	DM(E)
Carters Rest	Spotland Road	Centre	Wilsons	M,B(H)
Church	Wilbuts Lane	Cutgate	Wilsons	M,B(H)
Church Inn	Manchester Road	Castleton	Whitbread	DB(H)
Cloverdale	Entwistle Road	Centre	Wilsons	M,B(H)
Commercial	Milnrow Road	Centre	Lees	M,B(H)
Crawford Arms	Crawford Street	Lower Place	Lees	M,B(E)
Crown & Shuttle	Milnrow Road	Firgrove	Lees	M,B(E)
Craven Heifer	Broad Lane	Buersil	Wilsons	M,B(H)
Directors Arms	Heywood Old Road	Castleton	Bass	DM(E)
Derby Arms	Whitehall Street	Centre	Wilsons	M,B(E)
Dicken Green	Queensway	Ashfield Valley	Lees	M,B(E)
Dog & Partridge	Oldham Road	Buersil	Whitbread	CE(H)
Dog & Partridge	Bury Road	Roch Valley	Whitbread	CE(H)
Elephant & Castle	Bury Road	Bamford	Whitbread DB,CE(H)	
Entwistle	Halifax Road	Hamer	Thwaites	M,B(H)
Fairview	Broad Lane	Burnedge	Greenalls	M,B(E)
Flying Horse	Town Hall Square	Centre	Wilsons	M,B(H)
Fox. Inn	Milnrow Road	Centre	Tetley	JENN(H)
Farewell	Manchester Road	Castleton	Greenalls	M,B(E)
Foresters Arms	Bury Road	Centre	Tetley	JENN(H)
Gale	Whitworth Road	Shawclough	Bass	BB,DM(E)
Gale Inn	Valley Road	Ashfield Valley	Lees	GBM,B(H)
George & Dragon	Manchester Road	Castleton	Bass D/BASS,DM(E)	
Globe	Whitworth Road	Centre	Whitbread	DB(H)
Golden Ball	Spotland Road	Centre	OB/Boddies	M,B(H)
Grapes	Norden Road	Bamford	Bass	BB,DM(E)
Greengate	Halifax Road	Smallbridge	Wilsons	M,B(H)
Highland Laddie	Spotland Road	Centre	Lees	M,B(E)
Harrows	Bolton Road	Marland	Bass	LM,DM(E)
High Sheriff	Halifax Road	Hamer	Thwaites	M,B(E)
Horse & Farrier	Edenfield Road	Norden	Wilsons/Websters	M,B(H)
Hare & Hounds	Syke Road	Syke	Wilsons	M,B(E)
Hare & Hounds	Bury & Rochdale Old Rd	Bamford	Thwaites	M,B(H)
Hare & Hounds	Belfield Road	Centre	Boddingtons	M,B(E)
Healey	Shawclough Road	Lower Healey	Robinsons	M,B,SA(H/G)
Industry	Sladen Street	Centre	Bass	BB,DM(E)
Junction	Bolton Road	Castleton	Thwaites	M,B(E)
Lark Inn	Durham Street	Centre	Bass	BB,DM(E)
Lincoln Inn	Oldham Road	Lower Place	Boddingtons	B(H)
Lord Howard	The Strand	Kirkholt	Bass	BB(E)
Lord Nelson	Milnrow Road	Belfield	Whitbread	DB(H)
Mayfield	Albert Royds Street	Belfield	Bass	DM(E)
Mark Twain	Whitworth Road	Centre	Thwaites, Robinsons	M,B,SA(H/G)
Merrie Monk	College Road	Centre	Marston	M,B,PED(H) + guest beer
New Inn	Manchester Road	Castleton	Thwaites	M,B(E)
Navigation	Drake Street	Centre	Holts	M,B(H)
Norton Grange	Manchester Road	Castleton	Tetley	JENN(H)
Oxford	Whitworth Road	Lower Healey	Matthew Brown	M,B(E)
Princess Royal	Freehold Street	Freehold	Boddingtons	B(H)
Printers	Belfield Lane	Belfield	Wilsons	M,B(H)
Queens	Milkstone Road	Centre	Wilsons	M,B(H)
Railway	Yorkshire Street	Centre	Bass	DM(E)
Red Rose	Durham Street	Lower Place	Matthew Brown	M,B(H)
Royds Arms	Rooley Moor Road	Spotland	Bass	BB,DM(E)

Regent	Regent Street	Centre	Wilsons	B(H)
Reed Hotel	Yorkshire Street	Centre	Bass	BB,DM(H)
Roebuck	off Yorkshire Street	Centre	Sam Smith	TAD, OBB(H)
Royal	Oldham Road	Buersil	Thwaites	B(H)
Sandknockers	Halifax Road	Smallbridge	Wilsons	M, B(H)
Sawyers	Whitehall Street	Centre	Thwaites	M, B(E)
Ship Inn	Milnrow Road	Belfield	Whitbread DB, Hartley	(H)
Spread Eagle	Cheetham Street	Centre	Wilsons/Websters	M, B(H)
Spring Inn	Broad Lane	Buersil	Lees	M, B(E)
Success to the Plough	Bolton Road	Marland	Lees	M, B(E)
Tophams Again	Oldham Road	Lower Place	Robinson/Hartley	M, B(H)
Top House	Manchester Road	Castleton	Bass	DM(E)
Turf Tavern	Edenfield Road	Norden	Sam Smiths	OBB(H)
Two Ships	Hope Street	Centre	Thwaites/Boddies	M, B(H)
Waggon & Horses	Brimrod Way	Sudden	Wilsons	M, B(H)
White Lion	Rooley Moor Road	Spotland	Wilsons	M, B(H)
Winston Churchill	War Office Road	Bamford	Whitbread DB, CE	(H)
Waggon & Horses	Halifax Road	Smallbridge	Bass	BB, DM(E)
Woolpack	Halifax Road	Smallbridge	Bass	DM(E)
Woolpack	Drake Street	Centre	Bass D/BASS, BB,	DM(E)
Weavers	Ashfield Road	Deeplish	Lees	M, B(E)
Wellfield	Wellfield Street	Lower Place	Lees	B(H)
White Lion	Yorkshire Street	Centre	Thwaites	M, B(H)
Windmill	Bolton Road	Sudden	Burtonwood	M, B(H)
Yates (Bluebell)	Yorkshire Street	Centre	Tetley	B(H)
Yew Tree	Oldham Road	Balderstones	Sam Smith	OBB(H)

HEYWOOD AREA (Including Birtle, Cheesden and Pilsworth)

Black Bull	Rochdale Road East	Centre	Bass	DM(E)
Brick House	Bridge Street	Centre	Whitbread	CB(H)
Black Swan	Middleton Road	Hopwood	Thwaites	B(H)
Brunswick	Bridge Street	Centre	Burtonwood	M, B(H)
Chamber House	Rochdale Road East	Heywood	Matthew Brown	M, B(H)
Criterion	Argyle Street	Darn Hill	Marstons	M, B(E)
Egerton Arms	Ashworth Road	Ashworth Valley	Theakston	BB(H)
Engineers	Aspinall Street	Centre	Sam Smiths	OBB(H)
Hare & Hounds	Green Lane	Hopwood	Wilsons	M, B(E)
Horse & Jockey	Bury Street	Centre	Bass	DM(H)
Kings	Market Place	Centre	Thwaites	M, B(H)
New Inn	Edenfield Road	Cheesden	Bass	BB, DM(E)
Owd Betts	Edenfield Road	Cheesden	Greenalls	M, B(E)
Oddfellows Arms	Peel Lane	Centre	Wilsons	M, B(E)
Our House	Manchester Street	Centre	Bass	DM(E)
Pack Horse	Elbut Lane	Birtle	Lees	M, B(H) SA(E)
Pig & Whistle	Pilsworth Road	Centre	Whitbread M, TB,	CE(H)
Ship Inn	York Street	Centre	Whitbread	DB(H)
Starkey Arms	Manchester Road	Centre	Bass	DM(E)
Stonemasons	Bury Street	Summit	Thwaites	M, B(E)
Three Terriers	Dawson Street	Centre	Boddingtons	B(E)
Tanners Arms	Rochdale Road East	Centre	Bass	DM(E)
Three Arrows	Pilsworth Road	Three Lane Ends	Lees	M, B(E)
Woolpack	Birch Street	Centre	Bass	LM, DM(E)

MILNROW AREA (Including Newhey)

(Bottom) Bird in Hand	Huddersfield Road	Newhey	Sam Smiths	OBB(H)
(Top) Bird in Hand	Huddersfield Road	Newhey	Sam Smiths	OBB(H)
Bulls Head	Ogden Lane	Newhey	Bass	BB, DM(H)
Freemasons	Equitable Street	Centre	Whitbread	CB(H)
Free Trade Tavern	Newhey Road	Centre	Lees	M, B(E)
Gallows	Kiln Lane	Cross Gates	Bass	BB(E)
John Milne	Newhey Road	Centre	Theakston	BB(H)
Ladybarn	Harbour Lane	Centre	Boddingtons	B(H)
Tim Bobbin	Dale Street	Centre	Wilsons	B(H)
Wagon	New Street	Centre	Burtonwood	M, B(H)
Waggon & Horses	Newhey Road	Newhey	Lees	M, B(E)
Wheatsheaf	Haugh Lane	Newhey	Tetley	M, B(H)
Woolpack	Dale Street	Centre	Whitbread	DB(H)

LITTLEBOROUGH AREA (Including Wardle, Calderbrook, Dearnley and Summit)

Beach Hotel	Lakeside	Hollingworth Lake	Wilsons	M, B(H)
Caldermoor	Calderbrook Road	Caldermoor	Wilsons	M, B(H)

Dog & Partridge	Todmorden Road	Summit	Wilsons	M, B(H)
Falcon	Church Street	Centre	Tetley M, B, JENN(H)	
Globe	Wardle Road	Wardle	Wilsons	M, B(E)
Hare & Hounds	Ramsden Road	Wardle	Wilsons	M, B(H)
Huntsman	Summit Road	Summit	Bass	BB, DM(E)
Lydgate	Blackstone Edge Old Rd	Lydgate	Boddingtons	B(H)
New Inn	New Road	Dearnley	Bass	BB, DM(E)
Ox & Plough	New Road	Dearnley	Bass	BB, DM(E)
Queens	Church Street	Centre	Thwaites	M, B(H)
Railway Inn	Inghams Lane	Centre	D/BASS, BB, DM(H/E)	
Royal Exchange	Featherstall Road	Centre	Bass	BB, DM(H)
Royal Oak	Church Street	Centre	Bass	BB, DM(E)
Red Lion	Blackstone Edge Road	Centre	Wilsons	M, B(E)
Summit Inn	Summit Road	Summit	Bass	BB, DM(E)
Tophams Tavern	Smithybridge Road	Smithybridge	Boddingtons	B(H)
Wheatsheaf	Church Street	Centre	Whitbread	CE(H)
White House	Blackstone Edge Road	Blackstone Edge	Thwaites	M, B(H)

MIDDLETON AREA (Including Middleton Junction, Rhodes, Slattocks and Alkrington)

Albion	Wood Street	Centre	Boddies/Higsons	M, B(H)
Assheton Arms	Market Place	Centre	Lees	M, B(H)
Apple & Pear	Mainway East	Alkrington	Lees	M, B(H)
Bricklayers	Market Place	Centre	Bass	ST, LM(E)
Brewers Arms	Cheapside	Centre	Wilsons	M, B(H)
Boarshaw Hotel	Stanycliffe Lane	Boarshaw	Lees	M, B(E)
Britannia	Manchester Old Road	Centre	Lees	M, B(E)
Cotton Tree	Boarshaw Road	Boarshaw	Lees	M, B(E)
Crown	Long Street	Centre	Lees	M, B(E)
Carters Arms	Manchester Old Road	Rhodes	Lees	M, B(E)
Dog & Partridge	Spring Vale	Tonge	OB/Boddingtons	M, B(E)
Firwood	Joshua Lane	Middleton Junction	Lees	M, B(E)
Gardeners Arms	Sandy Lane	Middleton Junction	Lees	M, B(H)
Gardeners Arms	Manchester Old Road	Rhodes	Boddingtons	B(H)
Gardeners Arms	Grimshaw Lane	Middleton Junction	Lees	M, B(H)
Hopwood Arms	Manchester Road	Slattocks	Wilsons Cider,	M, B(H)
Hare & Hounds	Oldham Road	Tonge	Thwaites	M, B(E)
Hare & Hounds	Long Street	Centre	Lees	M, B(E)
Joiners Arms	Cross Street	Centre	OB/Boddingtons	M, B(E)
Jolly Carters	Oldham Road	Tonge	Lees	M, B(H)
Jolly Butcher	Heywood Old Road	Bowlee	Bass	BB, DM(E)
Junction	Green Lane	Middleton Junction	Lees	M, B(H)
Kenyon	Kenyon Lane	Tonge	Wilsons	M, B(H)
Kings Arms	Higher Wood Street	Centre	Wilsons	M, B(E)
Lancashire Fold	Kirkway	Alkrington	Lees	M, B(H)
Middleton Archer	Kemp Street	Centre	Lees	M, B(E)
Mallard	Windermere Road	Langley	Wilsons	M, B(H)
Minders Arms	Joshua Lane	Middleton Junction	Lees	M, B(E)
Moonraker	Wood Street	Langley	Tetley	M, B(H)
Nowster	Oldham Road	Tonge	Lees	M, B(E)
Oddfellows	Oldham Road	Tonge	Wilsons	M, B(E)
Old Boars Head	Long Street	Centre	Lees	M, B(H)
Old Cock	Oldham Road	Mills Hill	Lees	M, B(E)
Old Davids	Kirkway	Alkrington	Bass	ST(H)
Roebuck	Kirkway	Alkrington	Whitbread	TB(H)
Radcliffe Arms	Grimshaw Lane	Middleton Jct	Burtonwood JBA,	B(H)
Railway & Linnet	Grimshaw Lane	Middleton Junction	Lees	M, B(H)
Railway	Townley Street	Tonge	Wilsons	M, B(H)
Ring o' Bells	St Leonards Square	Centre	Lees	M, B(E)
Red Lion	Hollins Lane	Hollins	Boddingtons	M, B(E)
Royal Oak	Boarshaw Road	Boarshaw	Lees	M, B(E)
Ship Inn	Rochdale Road	Slattocks	Lees	M, B(H)
Three Arrows	Middleton Road	Rhodes	Boddingtons	M, B(E)
Tandle Hill Tavern	Thornham Lane	Tandle Hills	Lees	M, B(H)
Whitbrook	Boarshaw Road	Boarshaw	Bass	DM(E)
White Hart	Heywood Old Road	Birch	Bass D/BASS,	DM(H)
Wilton Arms	Manchester Old Road	Rhodes	Boddingtons	M, B(E)
Waggon & Horses	Manchester Old Road	Rhodes	Boddingtons	B(H)
White Hart	Long Street	Centre	Lees	M, B(E)
Who'd a Thowt It	Wood Street	Centre	Lees	M, B(E)