

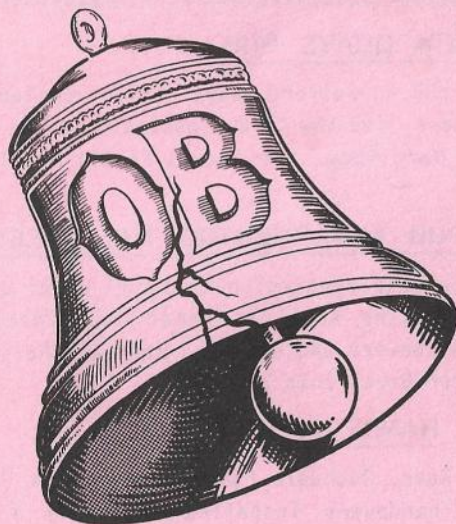
# WHAT'S DOING



MAR  
1988

THE MANCHESTER BEER DRINKER'S MONTHLY MAGAZINE

## BODDY ODOUR



Manchester's favourite brewery got a kick in the teeth last month when their high-handed attitude resulted in a strike. Pubs ran out of beer and foreign beers were brought in. Boddies regulars who were drinking, say, Buckley's Welsh bitter, realised for the first time how their favourite straw coloured brew had changed over the years. Some were heard to refer to Boddies thereafter as "toy beer". It's no longer toy in price - Boddies have had their second price increase in 12 months (see

"Rip Offs", inside). Plans to close Oldham Brewery are going ahead. CAMRA's Brewery Action Group, which was set up to prevent Boddingtons being taken over by a predator, has now concentrated its efforts on fighting the Oldham closure. Thousands of leaflets have been produced and a march round Oldham town centre has been planned for 12 o'clock on March 12th. It is important to show Boddingtons that people do care, even if the brewery does not.



We wonder what's happened to Boddingtons - a friendly, local, popular, small brewery has been transformed into a putative giant and in the process has alienated its customers and its employees and turned its back on principles which were so eloquently set out only a few years ago. CAMRA is not opposed to Boddingtons, but we are opposed to their activities which have resulted in brewery closures, keg beer and insensitive pub refurbishments. As long as Boddingtons insist on perpetrating these practices, CAMRA will do everything possible to resist them.

## 100 YEARS AGO

"Not only have we made a dent in the theory that big is beautiful, we have also shown that lager is not the greatest thing," says Mr Ewart Boddington, the chairman.

"I believe there will be a continuing place for small brewers for a long way ahead," says Mr Boddington.

Daily Telegraph 20 Feb 1978

\*\*\*\*\*

## NEW QUAYS PUB

Rumour has it that the new pub on Salford Quays will be called Samuel Platt's. Apparently the owners like the idea of naming the place after a local notable, as with the Mark Addy. But Samuel Platt! What's wrong with Vinegar Vera's?

## GREENING THE PUB AND PUBBING THE GREEN

Tetleys have applied for planning permission to build a car park and beer garden alongside the Smiths Arms in Ancoats. In Chorlton an application has been made to convert and extend a barn at the junction of Brookburn Road and Chorlton Green into a pub.

## HANDPUMPS

The Queens Hotel, Milkstone Road, Rochdale (just a short walk from the railway station), has had handpumps installed following a recent change of landlord. On sale are Websters Yorkshire Bitter (80p), Wilsons bitter and Websters Green Label (78p) and Wilsons mild (74p).

## FORTHCOMING ATTRACTION

The Vine on Kennedy Street, Manchester, reopened after a refurbishment on 18th February and the beer was 50p a pint. For those readers who missed it, there's always the Courage Directors to look forward to - probably in May or June.

## DUKE OF YORK, MARBLE ARCH CHANGES



Two well-known North Manchester licensees left their pubs at the end of February. Robin Bence has given up the Duke of York, Eccles, in order to run his "Eccles Greys" bus company. He took on the Whitbread pub in February 1981 and pioneered the "relaxed tie" approach, selling Taylors, Thwaites and other breweries' beers in addition to the Chesters range.

John Worthington bought the Marble Arch on Rochdale Road, Manchester, in July 1984. He transformed it into a popular free house, and proved that run-down inner-city pubs abandoned by the brewers can, in the right hands, be made to work.

The Duke of York will become a Whitbread managed house, although the range of beers may remain.

The Marble Arch has new owners and the range of beers is expected to be from Hydes, Marstons and Webster/Wilsons.



\*\*\*\*\*



# The Beer House



(Weaver's Arms)



6 Angel Street

off Rockdale Road

Tel: 061-832-1452

Home  
Cooked  
Food

Theakston's

Holt's

Linfit

Matthew Brown

Thatcher's Journey

(TRADITIONAL ALES)

Forthcoming Guests

Enoch's Hammer

Hyde's 4X Strong

Bateman's XXX B

Green King Abbot Ale

Wide selection of Continental Beers

Opening Hours

Mon. ~ Sat. ~ 11.30 ~ 3pm : 5.30 ~ 11pm

Sun. ~ 12noon ~ 2pm : 7.00 ~ 10.30pm

# CITY DESK

Peter O'Grady



MR THOMAS'S CHOP HOUSE, 52 Cross Street, has introduced Chesters bitter and mild on handpump in addition to their excellent handpumped Thwaites bitter. This pub is a masterpiece of Victoriana. A superb tiled floor, ornate wood panelling and wall tiles, together with leaded glass panels, give a cosy atmosphere. There are excellent dining facilities at lunchtime, and it is hoped that early evening meals will be available from mid-March. Although the front bar is invariably busy, the service is quick and friendly. At present the opening times are normal at lunchtime Monday to Saturday; open 5.30-8pm Mon-Thurs, 5.30-11pm on Friday and 7-11pm Saturday. Try it.

\* \* \* \* \*



Beer drinkers will be relieved to know that the characterful old "market" hostelry, the **WHEATSHEAF** on Oak Street, is still serving an exceedingly good pint of Tetley mild, bitter and Jennings bitter. The mild is particularly toothsome - Terry, the landlord, drinks it. The Wheatsheaf is a good straightforward pub of the type that has virtually disappeared from the city centre. Luckily, I can't see it becoming a cafe bar.

New Licensees will be in place by publication date at the **CITY ARMS**, Kennedy Street; the **HARE & HOUNDS**, Shudehill; the **CORNBROOK**, Chester Road, and **NICKLEBY'S** on Dale Street. We wish the new incumbents well.

\* \* \* \* \*

The **MILLSTONE** on Thomas Street (Wilson's mild and bitter, handpumped), has new-ish licensees. This roomy pub is building itself a reputation for good value pub food and has excellent facilities for meetings and pub sports nights.

\* \* \* \* \*

## ENTREPRENEURS' CORNER

The whisper is that **SMITHFIELDS** on Shudehill is up for sale. This place could also be known as "The Plagiarist's Arms" - it pinched the

pub name from the Smithfield Vaults on Swan Street, then called its upstairs restaurant the Market Restaurant, after the Good Food Guide, etc, listed real Market Restaurant on High Street/Edge Street. Perhaps the new owners will be able to come up with original names.

\*\*\*\*\*

## BOLTON NEWS

Des Nogalski

Davenports bitter has appeared in, of all places, the MORRIS DANCERS on the corner of Morris Green Lane and Sapling Road, a pub where tank beer has been the order of the day. A false handpump appeared next to the bar mountings during January following the arrival of a new licensee.

THE TAVERN, Hunger Hill, Wigan Road, Bolton, has changed its range of real ales. Out go Wilsons bitter and Websters Yorkshire bitter, in come Websters Choice and Ruddles County.

The Whitbread guest beer scheme appears to have died a death in Bolton. A recent visit to the BRIDGE INN on Wigan Road, Westhoughton, found Hartleys XB on sale as a permanent fixture alongside Chesters bitter and Castle Eden. The Chesters mild, however, is now keg.

Visitors to BENJAMIN TOPP'S at the top of Bath Street are in for a disappointment. The handpump on the bar isn't likely to be used again. According to the barperson, "We tried traditional beer but we found that people preferred the keg stuff." Avoid.

News of the FOURGATES, the Greenalls pub on the A6 at Westhoughton which is currently closed for refurbishment. Apparently it is to become an American bar/restaurant called EASY STREET. More on that one soon.

Further down the A6 the Mercury Motel's CLASSICS WINE BAR is worth a visit if only to try Moorhouses Premier Bitter. Apparently sales aren't too good, which obviously means the beer could disappear.

Again on the A6, at Westhoughton the WINDMILL INN has dropped Jennings bitter due to poor sales. So have the LOSTOCK ARMS on Lostock Junction Road and the WRIGHTS ARMS at Belmont, although the WRIGHTS is due to install handpumps for its Tetley mild and bitter quite soon.

Finally, my apologies for last month's error. The BROWN COW in Horwich does not serve cask Greenalls mild but the BLACK BULL across the road does.



## COCK AND BULL

If you thought the first plans for the Cock Hotel, Worsley, were horrendous, you ain't seen nothing yet! The people at the brewery obviously listen with cloth ears. The new plans are a landmark in applied tokenism. Yes, they include a locals' bar. It's in the present dining room and about the size of a cupboard. To compensate for these parasites supping halves of mild all day, Boddies want to build a 30-bed hotel on the car park and surround the entire pub with car parking spaces. It's the most insensitive treatment of the pub imaginable and shows that Manchester's favourite brewery couldn't give a monkey's about what their customers want. In case their sight as well as their hearing is impaired...



1. THE COCK CUSTOMERS DON'T WANT A RESTAURANT
2. THEY DON'T WANT AN HOTEL
3. THEY WANT THE VAULT TO REMAIN

What they don't want is an upmarket development catering for chinless hoorays and the XR3i brigade. They want a local to which they can walk, meet their friends and enjoy a pint in pleasant surroundings.

The new plans for the Cock were deposited with Salford Council on 29th January. Go and look at them (reference number E/22762) and write to the Council to object, or contact your local councillor. The grounds for objection to the planning application are somewhat restricted but the following may be considered important:



1. Inadequate car parking may create nuisance in the district.
2. Increased traffic could be dangerous and inconvenient.
3. Extension of hours - people arriving and departing late at night and departing early in the morning - may create a loss of amenity.
4. There are far too many hotels and restaurants in the area and there is no necessity for further large-scale developments.

Boddingtons must be stopped in their tracks. If they get away with this, there's little hope for the rest of their tied estate.

\*\*\*\*\*

# KING'S ALE

Leo King

I recently paid a visit to the Waggon & Horses (Holts), Hyde Road/Far Lane, Gorton, and what a pleasant surprise! This former run-down pub has really been given the treatment - plush carpeting, comfortable seating, a new, bright, lighting system and brand new handpumps. The outside has also been thoroughly cleaned. The interior has been slightly modified, but with very few structural changes. There is a smart bar counter and a clean, well-lit vault. All this, excellent beer, and no price increase. So Holts excel yet again.

At the Prince of Wales (free) on Oldfield Road, Salford, the range of ales is Boddingtons, Higsons and Oldham bitters and Hydes mild (all on handpump). It was good to see a mild on sale, and the beer was well on form at the time of my visit.

## SHORT MEASURE

I have recently been concerned about short-measured beer, which seems to be becoming more and more common in pubs with so-called "electric metered pumps". When a pint is ordered, it should be a pint, not half a litre - and why do so many licensees and bar staff pull faces when asked for a "top-up"? After all, it's our money we're spending, not theirs! The unpleasant thing about "topping-up" is that, after a while, the glass of reserve beer goes flat and stale. So the customer has to decide whether to take the top-up/slop-up or forget it and accept a thick, frothy collar.

In my opinion, the biggest culprits are Robinsons, Tetleys and Banks's. If these companies must use electric pumps, why don't they install the free-flow type like Holts use? This is a much more sensible system. But good beer surely deserves to be pulled up, not forced up by a motor. Let's see a return of many more handpumps; after all, they're adaptable to all types of pubs.

# MOORHOUSE'S

## BREWERS OF REAL ALE

**PREMIER BITTER** (O.G. 1036°)  
Silver Medal Award Winner, Brewex 83

**PENDLE WITCHES BREW** (O.G. 1050°)  
Believed Strongest Bitter Brewed in the North-West

Both delivered weekly direct from brewery to cellar. Contact Max Taylor to place your order.


**Tel: BURNLEY (0282) 22864**

### PREMIER DRAUGHT BITTER

*The Prize-Winning Pint!*

### Pendle Witches Brew

**STRONG  
BURNLEY  
BITTER**





## RIP-OFFS

Each February CAMRA branches throughout the country survey a selection of pubs in their areas to compare prices. In North Manchester the same 20 pubs are surveyed each year. In the last 12 months most prices have risen by 3p per pint (Holts, Tetleys, Hydes, Banks's and Wilsons). Chesters and S&N have kept their price rise to 2p per pint, whilst Robinsons' prices were exactly the same as they were last year. (There has been a 3p increase since the CAMRA survey.) Marstons, Greenalls and Bass have all gone up 4p, which leaves Boddingtons.

Boddies prices have risen by a massive 7p per pint, presumably to pay for all the redundancies. It's no longer a cheap local beer. Mind you, a couple of our free houses have managed to keep pace with Manchester's favourite brewery. You'd expect free house prices to rise by about 3p, and indeed the Crescent (3p) and the White House (2p) bear this out. However, two of our highly regarded free houses have gone over the top in price rises. Mild in the Duke of York, Eccles, is 8p more than it was 12 months ago and bitter 7p more. In February 1987 you could get mild or bitter in the Marble Arch for 69p. Now the mild's gone as a regular beer and bitter will cost you 78p a pint.

When inflation is less than 4% per annum and there has been no increase in excise duty, an increase of even 3p is unreasonable. Price increases of 7p or more are in excess of 10% and totally unacceptable. We know what Boddies are up to, but what's happening to our free houses?

\*\*\*\*\*

*WHAT'S DOING* is edited by Neil Richardson, 375 Chorley Road, Swinton, Manchester M27 2AY. News, articles, letters, moans, etc, must arrive by the 20th of the month for inclusion in the next month's issue.

**SUBSCRIPTIONS:** Send cheque/PO for £1.90, together with your name and address, to Roger Hall, 123 Hill Lane, Blackley, Manchester, for 6 issues. Cheques made out to "What's Doing".

**BACK NUMBERS:** 10p per copy. Send stamped, addressed envelope to Roger Hall, address above.

To Join CAMRA send £9 to Membership, CAMRA, 34 Alma Road, St Albans, Herts AL1 3BW.

**WHAT'S DOING ADVERTISING:** Enquiries to the editor, address above. Full page £25,  $\frac{3}{4}$  page £20,  $\frac{1}{2}$  page £15,  $\frac{1}{4}$  page £7.50. Discount on bookings for 6 months or longer.

# WIGAN & DISTRICT

Dave White

I don't know who was responsible for the insertion in last month's column - about there not being much strong ale in Wigan - but it wasn't me! (It was Brian Gleave - Ed) Each winter since 1985/6, Walker's Winter Warmer has been on sale at the **RAVEN**, Wallgate, and the **SPRINGFIELD**, Springfield Road; while Thwaites' Daniel's Hammer (remember that?) had a stint in the otherwise keg **JOHN BULL CHOPHOUSE**, up the Wiend.

Kath Scott, landlady of the **CROWN**, Platt Lane, Worthington, has quashed the rumours that she was ready to sell the pub to Matthew Brown/S&N. Once Mrs Scott is rid of a niggling back injury, the Crown will be back to its best with an increased range of beers; McEwans 70/- and 80/- are "possibles".

On the other hand, rumours are flying about that Tetleys are planning to convert the **GENERAL ELLIOT**, Lord Street, Croft, into a fun pub. The magpies in this village outnumber the population, and the pub is situated on a rather precarious fork in the road. Still, Tetleys know best. Whether the cask beers will survive the transition (Ind Coope Burton Ale and Tetleys and Jennings bitters) is something else again.

Incidentally, the **PADGATE CAMPUS** of **NORTH CHESHIRE COLLEGE**, Fearnhead, sells real ale at a fixed price of 82p a pint, which is quite reasonable for the likes of Greenalls Original and Theakston XB. (In my day, we had to make do with gassy Thwaites.) And don't forget, there's a Holts pub, the **MILLHOUSE**, not a hundred miles away in Cinnamon Brow.

Nearer home, the **ROYAL OAK**, Wigan Lower Road, Standish Lower Ground, has lost its traditional Burtonwood mild. This pleasant canalside pub still serves cask bitter via handpump.

The **LYCH GATE**, Church Street, Standish, has dropped Choice from its Wilsons/Websters range due to poor sales. The mega-obscure positioning of the handpump on the bar (from the main room) meant that this beer was the best-kept secret in Wigan Metro. Its demise is hardly surprising.

The **NOGGIN**, Warrington Road, Risley, is temporarily closed. This Greenalls pub appears to be having an extension fitted. Still with Greenalls, the **NEW INN**, Kitt Green, near Orrell, has gone over to chilled and filtered beers and, following a change of licensee, is now something of a fun pub. This means that all the pubs on the City Road stretch - the **MINERS ARMS** (Whitbread), the **BROOKHOUSE** (Tetley) and the New Inn - serve fizzy rubbish.



# Oldham Brewery closure

Oldham Brewery is due to close in April, with the loss of nearly 80 jobs. These job losses are apart from those at Strangeways. In total over 200 jobs are affected.

Oldham is loosing the last of its breweries, over the years there have been 6 breweries in the area. The name Oldham will no longer be associated with beer. Already we see bar mounts with the name Boddingtons Oldham Bitter.

When beer production is moved to Strangeways the subtle tastes of the beer is bound to be affected. The change of vessel size, different water & brewing personnel, even with the same recipe & ingredients can drastically alter the beer.

## What you can do about it

You can write to the people below & register your objections to the closure of this famous brewery.

### Boddington Personnel

Ewart Boddington,  
Fanshaw Brook Farm  
Henbury  
nr Macclesfield  
Cheshire.

Hubert Reid  
Marton House  
Marton  
Macclesfield  
Cheshire SK11 9HX

### Local MPs

James Lamond, MP  
House of Commons  
Westminster  
London  
SW1A 0AA

Geoffrey Dickens, MP  
The Sycamores  
Greenfield  
Oldham  
OL3 7PB

Micheal Meacher, MP  
45 Cholmeley Park  
Highgate  
London  
N6

Produced by

## **CAMRA GREATER MANCHESTER Brewery Action Group**

Chairman: Danny Blyth, CAMRA Ltd, 34 Alma Rd, St Albans.  
0727 67201

Vice Chairman: Rhys Jones, 24 Ellen Wilkinson Crescent,  
Manchester, M12 4JU. 0270 255123 x 8298 (w)

Press Officer Peter Barnes, 12 Ellesmere Rd, Eccles M30 9FH  
832 9111 x 2305 (w) 789 2323 (h)

# Why drink Boddies when you want



# Bitter ?



## Five black marks for Boddingtons

Boddington Brewery was once the pride of Manchester, but no longer. Over the years CAMRA have paid tribute to Boddingtons for its commitment to real ale & the brewery has always received support in their fight against takeover by the big national brewers. The Brewery no longer deserves its cosy reputation. Boddingtons are masquerading as a traditional brewer but in fact are acting like national brewers. Five characteristics demonstrate Boddingtons changed role.

## Takeovers

Having staved off takeovers themselves, Boddingtons swallowed up Oldham Brewery in 1982 & then Higsons Brewery in 1985. So far no real ales have been lost, but it is the thin end of the wedge. Experience of takeovers shows that in the long run, some beers inevitably disappear, CAMRA hopes to be proved wrong, but the impending closure of Oldham Brewery does not augur well.

## High prices

A CAMRA survey of Manchester City Centre has shown that Boddingtons are up there at the top of the price league alongside the big national brewers. The cheapest prices are to be found amongst the genuine local brewers - Holts, Hydes, Lees & Robinsons



## **Keg beer**

Boddingtons have been so strongly identified with real ale that to many people, real ale meant Boddingtons, they are now introducing brewery conditioned beer to some of their free trade outlets - & not making it clear that it is not real ale. Is this misleading?

## **Diversification**

Boddingtons now have 20 "Henry's Table" restaurants & a total of 50 are planned for 1990. They also have a holding in Village Leisure Hotels. Finding other ways of making money may be good for the Accountants but it means that the traditional business of brewing beer is apparently relegated in importance, & it has begun to show.

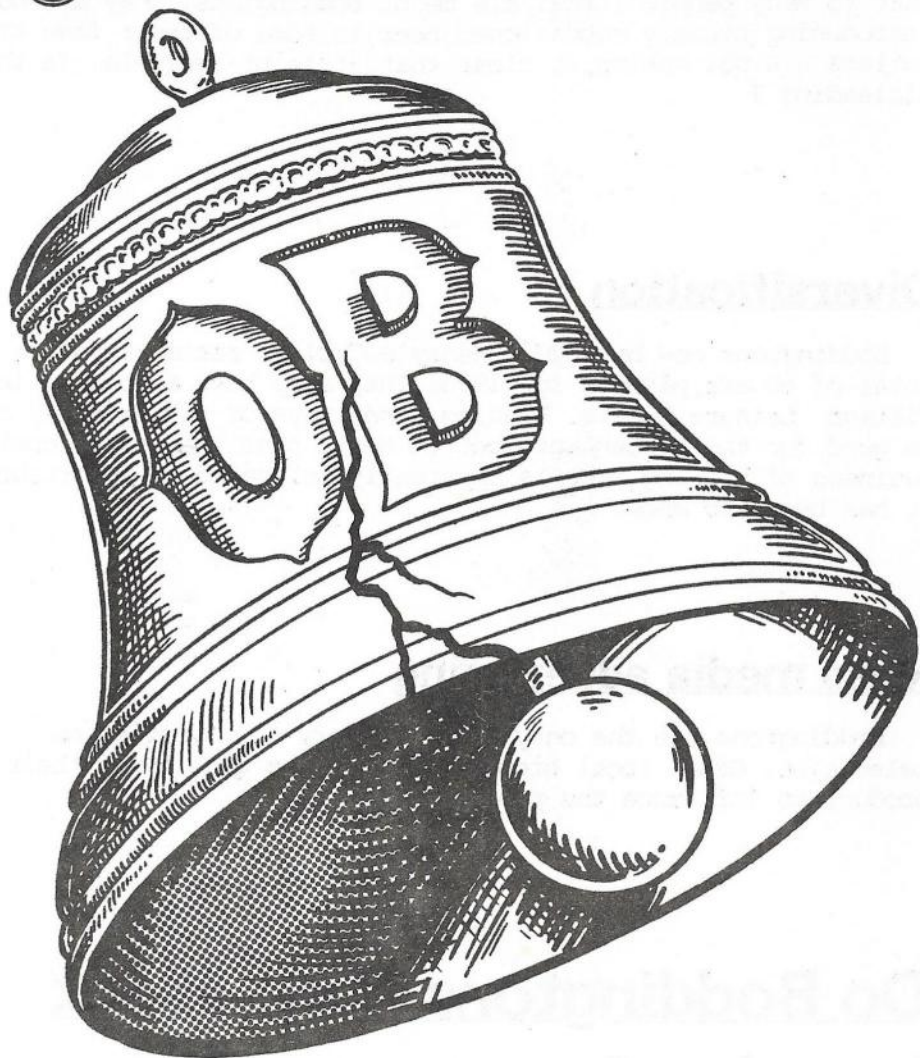
## **Mass media advertising**

Boddingtons are the only local brewery to advertise on television. Other local brewers rely on the quality of their product to influence the public

## **Do Boddingtons care about brewing?**

Commenting on the diversification into Hotel & leisure operations in the Company's annual report, chairman Ewart Boddington states "... forms part of a strategy to reduce dependence on traditional product areas whilst maximising our pub & other retail activities. "

**OB** means Oldham Brewed



**Will the Strangeways of  
brewing affect the taste ?**



# NOW & THEN

by Rob Magee

No.25

## CONFECTIONERS ARMS

35 Market Place  
Oldham

This view of the Market Place is the oldest known photograph of Oldham, taken around 1860. The pub on the left is the Confectioners Arms, a beerhouse which was then run by John Chadderton.

For many years before, John had been in business as a confectioner;



a "moulder of sugar, unequalled and certainly not excelled!" His creations were apparently in great demand and among his customers were Messrs Terry of York and Beal & Co of Manchester. For special occasions he moulded angels in different poses, and some of his creations required upwards of a quarter of a hundredweight of sugar.

But perhaps most significant of all, in the year 1842 John Chadderton invented the process of putting lettering all the way through a stick of rock. He even made up a rhyme about it:

"Break it where you will,  
There is will be still,  
All the way through,  
Eighteen hundred and forty two."

He also invented the sugar whistle, which he sold in their hundreds.

John Chadderton moved to the shop in the Market Place with his wife and three daughters around 1850 and obtained a beerseller's licence a few years later. The Chaddertons would have seen the fountain in the photograph being built. It was inscribed "Presented to the Corporation by the King Street Co-operative Society" on one side and "Dog Fountain" on the other - so that man and beast were provided for! It cost £15 to build and was replaced some thirty years later by a much grander fountain to commemorate Queen Victoria's Jubilee.

John Chadderton and his wife left Oldham in 1862. His daughters had died and in that year he lost part of his hand in a shooting accident. He took over the Volunteer Inn, Douglas, Isle of Man, but died after only a few months on the island. His body was brought back to Oldham and was buried in Greenacres Cemetery.

Mrs Chadderton kept the Volunteer for a few years after her husband's death, and then in 1865 she moved back to Oldham. She died the following year and was buried beside her husband and two daughters. The grave can still be seen.

What of the Confectioners Arms? The beerhouse survived barely two decades and closed around 1880; the last licensee was Jesse Angus. It stood on a site approximately in front of the present Littlewood's store.

\*\*\*\*\*

\*\*\*\*\*

Other contributors to this issue: Roger Hall, Paul Roberts, Peter Wadsworth, Clive Taylor, Alan Gall, Steve Lawton

\*\*\*\*\*

## WILSONS SELL 85 PUBS

Press reports have suggested that Grand Met sell-offs would be restricted to East Anglia and the South. Not so. 215 pubs are to go as one lot in the North and Midlands, 130 from the old Manns area and 85 in the Samuel Webster & Wilsons trading area. The tender deadline was 15 February and the sole criterion was the highest bid for each lot. The number of pubs in each lot may vary, but each pub will be sold with a licence and each is seen as viable. There will be no product tie and written guarantees will be sought from purchasers that sitting tenants will be transferred. This would protect them in the unlikely event of outlets closing.

After the sale, Grand Met will be left with 5,400 pubs (3,600 tenancies and 1,800 in the retailing division - Berni, Hosts and Cliftons). We would usually condemn the sale of pubs by a big brewery, but in this instance we would expect the transfer to bring greater choice and more competition. Mind you, if the pubs are snapped up by some loony leisure group, who knows?

\*\*\*\*\*



### WHERE IS IT?

This photograph has recently turned up, and is thought to be of a Manchester area pub in the 1950s. Anybody recognise it?

### CROWN & ANCHOR

The Crown & Anchor, Hilton Street, Manchester, closed on 14 February and is due to have a "Grand Reopening" at 5.30pm on 10th March. The pub is being completely overhauled and Whitbread promise the same range of beers, together with Trophy, Taylor's Porter and maybe one other, when the pub reopens.

\* \* \* \* \*



To the Editor:

375 Chorley Road, Swinton, Manchester M27

# LETTERS

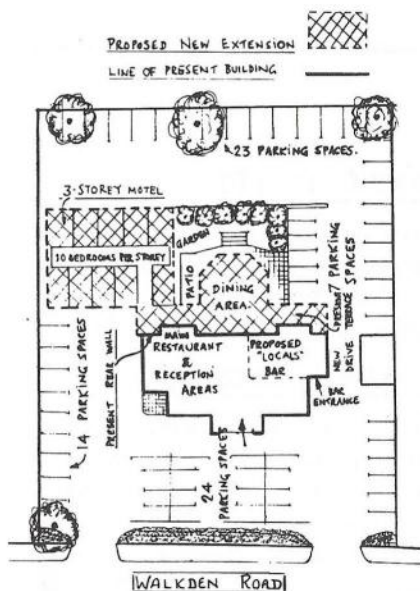


## COCK FIGHTERS

Sir - How interesting I found the letter from Boddingtons' Managing Director in the February WD. If our own situation were not so grim, I could almost describe it as "amusing". Let us examine his points in turn, in detail..

1 PLANS FOR REDEVELOPMENT "which include the addition of a Pub Restaurant". I prefer WD's earlier description - "the destruction of a pub". Look at the plans. There will be no pub, in the true sense, left. Just a yuppie-type restaurant whose limited bars and lounge will service both diners and those waiting to be called to table. How, then, can

there be a "pub restaurant"? As for being "confident that it will continue to be used by many existing customers..", the 1,000+ individuals who signed the recent petition to save the Cock Hotel have already given their answer to that!



2. THE PROVISION OF MEALS AND OTHER SERVICES "to the traveller and the local community". Quite astonishing! It is only in the past 3-4 years that it has been possible to obtain anything other than a tired sandwich or a warmed pie within the confines of the Cock Hotel. Why, even regular "Crisp Crises" used to arise! (I must stress that the present manager puts on a very good business lunch.)

3. LOCAL BREWERS SHOULD CATER FOR LOCAL TASTES. If only Boddingtons would. Look at the lousy press they

have been getting recently. Listen to the voices raised against the proposals. They are unnecessary and unwanted.

4. PLANS FOR THE FUTURE "which will be carried out as sensitively as possible". If this is an example of "sensitive planning", then I shudder to think what constitutes "insensitive". A pub has stood on the site since at least 1627. This is now to be "sensitively planned"

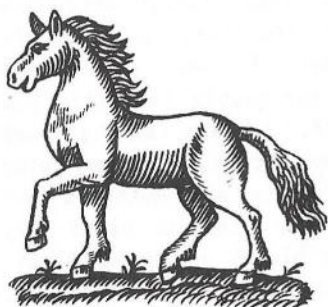
away and (a) a restaurant put in its place and (b) it is also "sensitively planned" to site a 30-bed motel adjoining the Green Belt and Woods, and close to houses. No concern for immediate residents or local drinkers - most of whom have supported Boddingtons over many years. The development isn't needed - there are more than 20 good eating establishments within an approximate one mile radius of the Cock Hotel, plus the large Novotel Hotel half a mile away and the large Greyhound Motel some three miles distant. Boddingtons have turned deaf ears to the protests the scheme has generated. Yes, very "sensitive".

5 PLANS BEING REVIEWED "to see if these can be varied to provide a separate 'locals bar'". One visit to the present Cock, on any weekend opening, will show immediately that this will be woefully inadequate; probably even for just the vault regulars.

To paraphrase the "Dad's Army" song - "Who do you think you are kidding, Mr Boddies?" What we are fighting for here is a cherished and important part of our social lives, whilst defending our surroundings and heritage.

Big business rules OK? Not while we can still fight!

Alan Stewart, Chairman, Save the Cock Committee



#### WHITE HORSE

Sir - I have been asked why so many public houses in the region are given this name, and wonder if your readers can come up with an answer. There are between 500 and 600 White Horse inns or pubs in the British Isles, and 15 of them are in Greater Manchester, 8 in Lancashire, 4 in Cumbria and two in the eastern part of Cheshire.

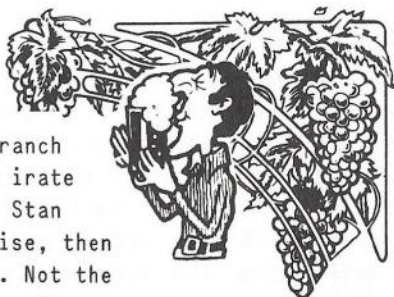
The White Horse has particular significance in Kent and Berkshire, and it was the sign of the royal house of Hanover, but did that mean anything special in this part of the world?

Any serious suggestions would be most welcome.

J R A Daglish, North West Licensed Trade Development Association,  
Bridgewater House, 23 Barton Road, Worsley, Manchester M28 4PE

\*\*\*\*\*

# RUPERT'S PAGE



As I was about to enter the Slumley Branch HQ, I was knocked to the ground by an irate person stamping out in a giant huff. Stan Craap (for it was he) began to apologise, then realising it was me, stormed off again. Not the sort of behaviour one would expect in a toy supremo,

I thought to myself as I re-entered the aforesaid hostelry. All the crowd were there because Billy Cosh, William of Irlam and Ben Chestnut had resumed the Fogues musical quartet (nearly) and were singing lute and mandolin accompanied madrigals to the assembled throng. Stan, too, had been enjoying the splendid entertainment when his eyes happened to rest on a poster announcing a forthcoming Anschluss of part of what he regarded as his own sovereign territory. Stan was distraught and protested at length, but Billy said that this was normally the way of doing things in both the Third Reich and Slumley. "In any case," Billy challenged Stan, "name me one branch that covers East Friggin." It was this which precipitated his hasty retreat, resulting in my knocking down.

Gradually the conversation turned to other things. Royal Hall said that Stan had refused to tell him how many Brobdingnags hostelries there were in Nastley and Piddlesley and this brought about an onslaught on Grotley's famous brewery. "Serves them right," said Tish unsympathetically. "If Efrem hadn't run off to the funny farm and left Osbert Pratt in charge of shutting Fuddy's it need never have happened. The man's a sadist, but if you treat people like shit you usually end up getting covered in it yourself." Beinlos remarked that he found Tish's language offensive and anyway he really enjoyed going in lots of Efrem's houses and drinking Drabs and Python's and Gollocks, in fact anything apart from the characterless bilge they usually sell. Fiona said it was sad that a highly respected family brewery should, in a few short years, metamorphose into a heartless, uncaring monster, interested only in profit. Everyone concurred.

At this point, for no apparent reason, Buntly mentioned prices in Grotley's favourite hostelries. Why were they so high, he wondered, and why, he further mused, if everything What's Doing wrote was utter claptrap and a tissue of lies, did Charlie Bass put up massive posters pointing this out?

"Mezhinksh he doesh protest too mush," said Beinlos as he slipped into oblivion.



With two potential new re-outlets, What's Doing is poised to become once again Grotley's biggest circulation imbiber's cheeky little mag, beating Opening Tripe, which is evidently difficult to give away in larger quantities.

\*\*\*\*\*

### BROWNS No.1

For the past year or so, Graham Rawlinson has run a Heywood town centre bar called **BROWNS No.1** at 41 Bridge Street. The bar specialises in Belgian and German bottled beers in their many forms, and is styled along the lines of a Dutch "Brown Bar".

As a bonus for the draught real ale drinker, Graham has recently introduced a regular guest beer system, which has so far included Everards, Taylors and Hydes. Depending on the demand, Graham is to continue providing regular guest beers, which in Heywood town centre is much overdue.

### DANNY BAR

We hear that Thwaites have got themselves a cafe bar in Manchester city centre, and it is due to open soon. In the imaginative tradition of Henry's, John Willie's and the rest, they're calling it Daniel's.

---

## ***BEER from BELGIUM***

---

GUEUZE, KRIEK & PEACH  
lambic beers 1050-52 O.G.

DE KONINCK  
special ale 1047 O.G.

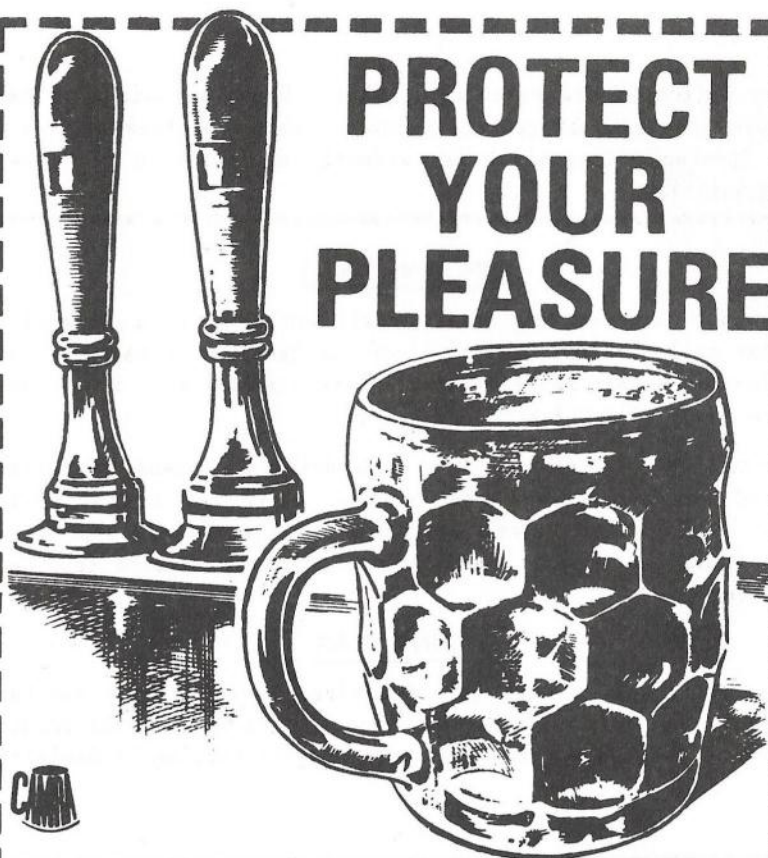
KWAK  
strong & warming 1085 O.G.

---

**telephone:                      061 976 3027**

---

# PROTECT YOUR PLEASURE



## JOIN CAMRA NOW

Just fill in the form below and send, with a cheque for £9 (payable to CAMRA Ltd) to Sally Bennell, CAMRA, 34 Alma Road, St. Albans, Herts AL1 3BW.

### APPLICATION FORM

NAME .....

ADDRESS .....

.....

..... POST CODE .....

I wish to join the Campaign for Real Ale, and agree to abide by the Memorandum and Articles of Association. I enclose a cheque for £9 (£12 if overseas).

Signed ..... Date .....





# Branch Diary

## BOLTON

Thurs 3 March, Wigan Beer Festival Social. Meet 7pm Raven, near Wallgate Station  
Tues 8 March 8.30, Branch Meeting, York Hotel, Newport Street  
Sun 20 March, Beer Festival Poster Distribution - Horwich. Meet Toll Bar 12 noon  
Wed 23 March, Bury Crawl. Start 7.30 Rose & Crown, Manchester Old Road  
Fri 25 March, Central Manchester Crawl. Start 7.30 Lass o' Gowrie, Charles Street  
Sun 27 March, Poster Distribution - Radcliffe. Meet Old Cross 12 noon  
Wed 6 April Whitefield Crawl. Start 7.30, Church  
Thurs 7 April Stockport Beer Festival Social. Meet 6pm York Hotel, Bolton. 7.30 Manchester Arms, Stockport  
Tues 12 April 8.30pm, Branch Meeting, Lodge Bank Tavern, Bridgeman Street  
Wed 20 - Sun 24 April, GREAT NORTH WESTERN BEER FESTIVAL, Bolton Sports & Exhibition Centre, Silverwell Street, off Bradshawgate, Bolton. Over 100 real ales and ciders. More details next month.  
Contact: Dave Fleming Farnworth 75111 x207 (w) Bolton 389918 (h)

## WIGAN

Thurs 3 - Sat 5 March, WIGAN BEER FESTIVAL, Mill at the Pier, Wigan Pier  
Wed 15 March 8.30, Branch Meeting, Swan & Railway, Wallgate, Wigan. (Including an orgy of self-congratulation or post-mortem on the Beerex)  
Wed 23 March 8.30, Final GBG selection meeting, Old Pear Tree, Frog Lane, Wigan  
Contact: Brian Gleave Atherton 892965 (h), Atherton 876200 (w)

## ROCHDALE, OLDHAM & BURY

Tues 1 Mar 8pm, Branch Meeting, Welcome, Bury Old Road, Besses, Whitefield  
Tues 8 Mar 8pm, 10 years in the Good Beer Guide presentation to the Coach & Horses, Bury Old Road, Whitefield  
Tues 15 Mar 8pm, Committee meeting, Ostrich, Bury Old Road, Prestwich  
Tues 5 April 8pm, Branch Meeting, Old Dun Horse, Bolton Road West, Ramsbottom  
Fri 8 - Sun 10 April, Mayor of Oldham Charity Appeal Beer Festival. Werneth Music Rooms, Oldham. Branch contact for details.  
Tues 19 April 8pm, Committee meeting, Help Me Thro, Crostons Road, Bury  
Contact: John Burns 061 653 8361 (h)

## NORTH MANCHESTER

Wed 2 Mar, Collyhurst - Rochdale Road. Milan 7pm, Golden Lion 8pm  
Wed 9 Mar, Little Hulton. Kenyon Arms 7pm, Horseshoe 8pm  
Sat 12 Mar, Oldham Brewery Protest March. Mid-day - 2pm  
Wed 16 Mar, Branch AGM, Crescent 8pm. Election and GBG selections  
Wed 23 Mar, Bury Survey. Rose & Crown, Manchester Old Road, 7pm to 8pm  
Wed 30 Mar, Ringley & Farnworth survey. Lord Nelson 7.30, Horseshoe 8pm  
Wed 6 April, Pendleton. Woolpack 7pm, Paddock 8pm  
Contact Roger Hall 740 7937

## TRAFFORD & HULME

Thu 3 Mar 8pm, Committee/Social, Railway, Hale  
Thu 17 Mar 8pm, Branch Meeting, The Toll Gate, Seymour Grove, Old Trafford  
Thu 24 Mar, City Centre Crawl: Pack Horse, Deansgate, 7pm; Peveril, Great Bridgewater Street, 8pm  
Sun 27 Mar 12 noon. Wardens Club Social, Wardle Road, Sale  
Thu 7 April 8pm, Committee/Social, White Lion, King Street, Knutsford  
Contact: David Shelton 061 224 7341 x27 (w) 061 795 2113 (h)



# THE QUEENS ARMS

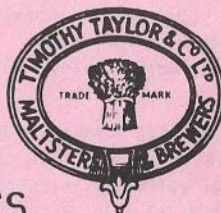
FREE HOUSE

6 Honey Street

(off Redbank)

Manchester

Tel. 061 834 4239



*Serving a range of*

**TRADITIONAL ALES**

*from*

**THEAKSTONS & TIMOTHY TAYLORS**

**Best Bitter, XB, Old Peculier,**

**Landlord and Porter**

*all on handpump*

**ENOCH'S HAMMER old ale on gravity**

## OPENING HOURS

**LUNCH:** 11.30 to 3.00 Monday to Saturday  
12.00 to 2.00 Sunday

**EVENING:** 7.00 to 11.00 Monday to Saturday  
7.00 to 10.30 Sunday

A selection of hot and cold food at lunchtime  
and early evening, including chilli and curry

Special menu for weekends available