

25p

# What's Doing

SEPT 1993



Britain's Best-Selling Regional CAMRA Magazine

## New Manchester Free House

They may be pulling pubs down round the corner on Oldham Road, but things are looking up on Swan Street. Several years ago the lease of the old Smithfield Vaults was acquired by the Regal Knight company and it became the Royal Crown Hotel. Now the licensee has taken over and it has another name, Walkers Hotel and Bar.

A range of up to five bitters and a mild is promised (including Old Speckled Hen, London Pride and Landlord) and at reasonable prices. As reported in a recent WD, Landlord and Castle Eden have been on sale at £1.15 a pint.





## **Longer hours**

Pub-goers will enjoy longer drinking hours in Manchester City Centre in September as the licensing bench has decided that the number of events taking place in the city is sufficient to make the month "special". More importantly, the extended hours will show the Olympic hierarchy that we can cater for the expectations of foreign visitors when it comes to getting a drink.

The longer pub hours are until midnight on Thursday, Friday and Saturday and between 3pm and 7pm on Sundays. This is a one-off experiment, so make the most of what CAMRA believes are the sort of hours we should have all the time. (Not all pubs will be taking advantage, so check first.)

## **Railway, Broadheath**

Last month the Department of National Heritage announced the Grade II listing of the Railway because it is of special architectural or historic interest. The schedule to the listing contains a detailed description of the interior and concludes: "A rare example of an unaltered modest interior to a small public house, retaining room divisions and original bar and bar-room fittings." BodPubCo are planning to do one of their "Ale House" conversions at the Railway later this year, so we trust they will respect the Secretary of State's opinion that the pub is not to be messed about.

## **Bull rears its head again**

After being closed for several weeks, the Bulls Head in Hale Barns has reopened with a radically altered interior. The ceilings have been removed and various features have been fitted on a "chapel" theme. Unfortunately it all appears as something of an unfinished hotchpotch, with high quality woodwork in parts and rough timber in others!

Nevertheless, bar service is good, there is also waiter service and the beer quality has undoubtedly improved. The range has not altered and comprises only Robinsons best mild and best bitter.

## **Swinton Yates's**

A Yates's emporium has opened in former shop premises in Swinton's shopping precinct. On sale recently were John Smiths bitter and Stones bitter at £1.25 and Cains Formidable at £1.35 (not bad for a 5.1% beer). Yates's isn't tied to a brewery so more interesting beers could be on offer in future.

## Far Flung Flixton!

Sean Kilgariff

With the gauntlet thrown down to Flixtonians to check out the solitary Sam Smiths OB bitter handpump at the Railway on Irlam Road, Flixton (Aug WD), this intrepid beer-swiller from Irlam crossed the Big Ditch to do just that. When the landlord had released his grip and allowed my feet to return to the floor (a most pleasant man, really), he showed me the plethora of handpumps dispensing OB in all rooms at £1.08 a pint. Over an excellent pint of beer the landlord explained that the pumps had been in and working for almost three months. The bitter is going so well that Museum Ale may join it in the near future.

Meanwhile, back in Irlam, the Higher Irlam Social Club has got as its latest guest beer the "interesting" Lions Bitter from the 1991 Empress Brewery in Burnley. With an ABV of 4.1% and a price of 98p per pint it must rate as one of the best value pints in the country - it's certainly the best value in this area!

Another famous watering-hole, "Boathouse" (the "The" has been dropped from the nameboards) on Ferry Road, closed for a week so the revamp could be finished off and then it reopened selling beer 4p a pint dearer. (I suppose the carpets in the vault had to be paid for.) The latest revamp at the Coach & Horses, Cadishead, is to cost punters 2p a pint. Both pubs belong to BodPubCo. I rest my case!

\*\*\*\*\*

## Altrincham

The keg Scrumpy Jack handpump was removed from the bar of the Orange Tree earlier in the summer and the pub now sells traditional Bulmers West Country Cider. Despite initial problems in convincing the customers that real cider is supposed to be cloudy, it is now selling well. The Orange Tree is unique in being Trafford's only real cider outlet and in having Trafford's only non-smoking room.

By contrast, the Unicorn next door sells Scrumpy Jack cider through the misleading handpumps. The beer range in this real ale theme pub has been reduced to the Whitbread standard of Marstons Pedigree, Boddingtons bitter, Jennings bitter and sometimes a guest.

The former Barclays Bank on the Downs has had its vault removed and it is now the Zanzibar wine bar, selling cask Tetley bitter and Ind Coope Burton Ale.

# THE STATION

## ASHTON'S PREMIER FREE HOUSE

offers a selection of  
hand pumped traditional ales  
in a friendly atmosphere.

## GUEST BEERS

from the smaller or more distant  
INDEPENDENT BREWERIES  
share the bar with  
Boddies, Pedigree & Chester's Mild  
plus interesting bottled beers.

Superb but inexpensive  
LUNCHEONS

## WE'RE OPEN ALL DAY

Monday to Friday

Saturday: 11.30-3.00/7-11.00, Sunday usual hours

Conservatory, Snug or Function Room

for meetings & parties

Ring Sylvia - 330 6776

WARRINGTON STREET  
ASHTON-U-LYNE

(NEAR BY-PASS)



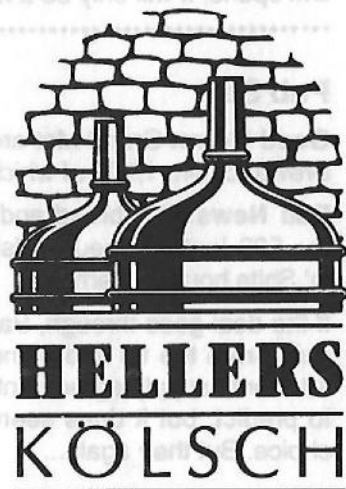


## Beinlos in Köln

Paul Roberts

Two recent developments have increased the number of breweries in Cologne to an amazing 27!

Hubert Heller opened the Deutschen Bierhaus in 1983, where he sells seventeen draught beers of all German brewing styles in cavern-like surroundings. In 1991 he started to brew Hellers Urweiss, an unfiltered, top-fermented brew, then February 1992 saw the production of Hellers Kölsch. This is a "100% ecological" beer, made from pure malt and hops which have been farmed without chemical fertilizers. In comparison with most German beers, Kölsch beers are generally quite bland and in order to counteract this, Hellers Kölsch has a higher hop content - almost as much as the average Pils.



The end result is a very pleasant, hoppy drink with far more taste than the usual varieties. The brewery manager, Norbert Effgen, claims that the benefit of this completely pure beer is noticeable the morning after. He regularly drinks thirty glasses per evening and swears he suffers no after effects the next day.

Take-outs are available in 10-litre barrels and 2-litre flagons, which are filled to order. Weiss also comes in half-litre bottles. Definitely worth a visit, the Hellers Brauhaus is to be found at Roonstraße 33, just off the main inner ring road between Rudolfplatz and Barbarossaplatz, and is open 6pm-1am Sunday to Thursday and until 2am Friday and Saturday.

The latest brewery to open is Papa Joe's Brauhaus, "Em Bierstall", at Unter Käster 14, right at the heart of Cologne's Altstadt. Papa Joe's long-established jazz and piano bar is just a few doors down from the new premises in Altermarkt.



The Bierstall-Bräu is an unfiltered, top-fermented brew available in 0.3 litre measures (the usual Kölsch measure is 0.2 litre). Unlike the Heller's Brauhaus, the Bierstall is a "gimmick" establishment, with the beer served in surroundings which are somewhere in between Madame Tussaud's and the

Hall of Mirth! Giesler-Brauerei actually organise the brewing of the beer.

Cologne already had more breweries than any other city in the world and with these two the city is even more worth visiting. Once the Chunnel rail link opens, it will only be a few hours by train from Manchester.

\*\*\*\*\*

## Pub Sale

**Good News:** Grand Met are flogging off some 1,600 pubs in the Chef & Brewer chain, 1,100 of which are managed houses.

**Bad News:** Whitbread and Bass are buying them. What they'll do with the 500 Innentrepreneur millstones is anyone's guess. Turn them into Tit 'n' Shite houses, perhaps?

If the deal goes through, Bass and Whitbread would have to free existing pubs from the tie and come to some arrangement about the remaining 18-month supply agreement with Courage. It's early days yet and difficult to predict, but it does seem as though the deal might result in greater choice. But then again...

*Bigger for '93 !*



**Open:**

**Friday 12-15.00, 17.00-23.00**

**Saturday 12.00-15.00, 18.00-23.00**

**More than 50 Real Ales**

**Food at All Sessions**

**Cider & Foreign Beers**

**Entertainments**

**Two Drinking Areas**

**No Smoking Bar**

**CAMRA Members Free**

**The Metropolitan (former Derby Hall)  
Market Street, Bury**

# Letters

## City Centre Pubs

Sir - The figures quoted (WD August) to argue for increased Good Beer Guide representation in Manchester City Centre are misleading. With the exception of Liverpool (which, like Manchester, has a separate City Centre heading in the guide) and Newcastle (where no suburban pubs appear under the city's heading), the figures represent the whole of the town or city concerned - not just the city centre, as is the case for Manchester.

Correcting for this, I estimate the following figures give the true comparison for Beer Guide entries in the centres of the towns and cities quoted in the article:

Leeds 8, Newcastle 11, Oxford 4, Liverpool 12, Glasgow 6, Stafford 8, Stoke on Trent 3, Swansea 7, Cardiff 4, Bristol 5, Bath 10, Bolton 6, Salford 4, Stockport 2, Manchester 9.

These figures do not appear to bear out the hypothesis advanced!

## Saving the Plough

On a separate matter, I was disappointed by the defeatist tone of your item on the campaign to save the Plough in Gorton. You are no doubt right to say that the Hyde Road dual carriageway scheme will go ahead come what may - indeed, I know of no organised opposition to it. CAMRA's proposal, however, preserves the pub whilst not in any way impinging on the road scheme. I am pleased to say that it is being taken very much more seriously by the competent authorities than by your contributor. I cherish the hope that, like the nearby Coach & Horses on Belle Vue Street (already saved from the same scheme by a CAMRA campaign), the Plough will stand for years to come in vindication of intelligent, prioritized CAMRA action, as opposed to the anguished wringing of hands.

*Rhys P Jones*

## Dusty Miller

Sir - The August edition of WD gave prominence to the choice of five cask beers available at Whitbread's Dusty Miller in Middleton's town centre.

The Dusty Miller was for years a predominantly keg pub and a visit to the pub today will reveal that it still is. On a couple of occasions recently I was one of only a handful of cask beer drinkers. The beers were in poor to dreadful condition. It's too big a transition in one step, I fear, and I predict that the experiment will not last long and that soon only Boddingtons (if that) will remain.

I regret that the article did not comment on the beer, but I suppose that as always with Whitbread, "caveat emptor". Those gullible enough to visit the Dusty Miller, on what appears to be a recommendation from CAMRA, should certainly bear this in mind.

*Peter Alexander*

### **City Centre Pubs (2)**

Sir - I write to criticize the misleading assertion that Manchester's CAMRA branches don't care enough about their city centre pubs. Many other branches put pubs up to three miles out of town under the city or town centre heading in the Good Beer Guide. The Leeds 19 include several pubs in suburbs such as Hunslet, which would be like putting Hulme under Manchester city centre. In Cardiff there are only four genuine city centre pubs in the Guide. In Manchester there are actually 11 GBG pubs in the centre, as the White House and the Jolly Angler are easily accessible, but listed under Ancoats.

If the Manchester Olympic bid is successful, CAMRA head office should increase the regional allocation of pubs so that Manchester's special position as an international tourist city can be acknowledged without removing excellent suburban pubs from the GBG.

*Roger Wood*

### **Café Bar Licences**

Sir - It's not surprising that Cheadle Hulme is confused about our licensing laws (WD Aug). They are already far too complex and promise to become more so. July's article stated that café bar licences are both unnecessary and undesirable. Even after ten pints you wouldn't notice much difference between a café bar and a pub, except that kids wouldn't be allowed into any part of a café bar. With a special licence even that distinction might disappear.

What is important, however, is the way in which the licence might be obtained. If a café bar licence could be obtained in the same way as a restaurant licence, then the grounds for refusal applicable to pub licences (full on licences) are seriously weakened. This would inevitably lead to a proliferation of café bar premises - unfair competition for both pubs and restaurants which I for one don't consider desirable. Sometimes it's necessary to try to understand the complexity of our arcane licensing laws in order to fight for what we believe to be right.

*Jim Paterson*

PS: I can't make head nor tail of the deranged Rupert, either.

### **Pub Food**

Sir - Further to Hungry Horace's letter ("Food for Thought") in last month's WD. It is indeed sad that some pubs are prevented from selling food because of all-encompassing hygiene regulations, but I don't agree



with Horace's answer to the problem. Buying in pre-prepared food as Sainsbury's and Marks & Spencer's do? If I want to eat Sainsbury's sandwiches, I'll go to Sainsbury's. What about the individuality of home-made food and all the other qualities that make eating in pubs interesting? Places that sell the pre-packed stuff tend to have as much atmosphere as a Sainsbury's shop.

What is happening to all those marvellous, humble pubs which provide good, honest processed cheese sandwiches (white bread, of course) and well-matured pickled onions? Can you get a decent pie in Wigan these days? Never mind the bloody trams and new roads - this is a British institution worth defending!

*Charlie Cheddar*

\*\*\*\*\*

## **BLACK HORSE, FAILSWORTH, MANCHESTER**

A well known and popular house in the Failsworth area which would ideally suit an experienced mature couple wishing to develop their career in the licensed trade.

- \* Vertical drinking in bar area
- \* Small to medium lounge
- \* Small popular games room
- \* 3 bedrooomed private accommodation
- \* Capital requirement £13,000

## **Adspeak**

The cutting on the left comes from a recent Manchester Evening News advertisement for Marstons pub tenancies. Vertical drinking, eh? Sounds like fun. But what about us horizontalists?

\*\*\*\*\*

## **Kendlegate Wine Cellars Ltd**

164 Northgate Rd, Edgeley. Tel: 477 3939

Wide range of Belgian and Continental Beers  
Cask beers to order, glass hire, delivery service

Timmermans, Leifmans, Orval, Chimay, Duvel, Hooegarden,  
Rodenbach, Kwak, Westmalle, St Sixtus, Worthington White Shield,  
Imperial Russian Stout, Taddy Porter  
and Vintage Ciders

Wide selection of Wines £2 - £20  
Parties and Functions supplied

Note: We operate under Wholesale Licensing Regulations, therefore  
minimum purchase is 24 bottles beer or 12 bottles wines/spirits,  
which can all be different

Open: 8am-5.30pm Monday-Friday; 11am-3pm Saturday

Closed Sunday and Bank Holiday Weekends

Telephone orders accepted on a COD basis

## Scilly Ales

Steve Smith

Although an expensive holiday retreat, the Isles of Scilly, some twenty-eight miles south-west of Land's End, are well worth visiting and you can enjoy an abundance of wildlife, glorious unspoilt beaches and ample walking. There is a true magical feeling about these islands; only six are inhabited and there are forty or so uninhabited ones. Only four of the six have any real ale outlets and all these bar one sell the hand-pulled variety.

St Mary's is the largest and the main island so the capital, Hugh Town, is a good place to base oneself. There you will find three pubs within a short distance of each other along the main thoroughfare. The first, nearest the quay and handy for the boats, is a former Cornish Brewery establishment (now Whitbread), the Mermaid. This is a proper drinkers' den, perhaps the least attractive of the three but with a superb atmosphere. Beers available on my visit were Flowers Original (£1.38 a pint) and - wait for it - Boddingtons bitter, which has even found its way this far down! The second pub, one of two St Austell Brewery outlets, is the Atlantic Inn, an extension of the hotel. The beers were the popular Tinnors Ale, the stronger Hicks Special Draught and the even rarer XXXX Cornish Mild. (This sold at a quite reasonable £1.22 a pint.) The third pub, the Bishop & Wolf (a lovely name taken from the rocks on which the lighthouses stand) is also used as a base for storing ales for distribution to the other islands. The same beers are available as at the Atlantic Inn and at the same prices.

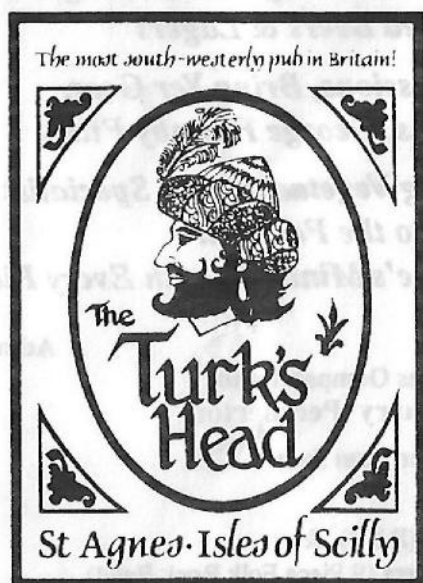
All three pubs can be extremely busy at any time - almost full to overflowing. They are bedecked with maritime memorabilia and each has a restaurant for main meals and bar snacks, lunchtimes and evenings. There is one other real ale outlet here, Tregarthen's Hotel, which sells Marstons Pedigree at £1.70 per pint in the rather upmarket bar.

Excursions to the other islands proved to be interesting. Boats leave the quayside around early and mid-morning, with direct return trips or round island tours with a selected stopping-off point. Either way, you can usually get a few hours in one particular place, returning late afternoon. The trips can be most exhilarating, apart from one which involves disembarkation via a plank of wood leading on to the rocks and over some slippery seaweed!

Tresco, perhaps the prettiest of all the islands, boasts two real ale

outlets, the New Inn and the Island Hotel, located a short distance apart at New and Old Grimsby respectively. They are both outlets for Flowers and the former has scope for guest ales, though sadly none were available at the time of my visit.

St Martin's has an unusual real ale hostelry in the form of a guest house-cum-tea garden! The Polreath, incorporating Web's Tea Rooms, serves Cotleigh Bitter (70p per half) on gravity. There is even a CAMRA sticker in the window which advertises "Real Ale Available Here". Beware the two non-real ale pubs - the Seven Stones Inn (keg Allied) and the St Martin's Hotel. Although the latter sported three handpumps, I was informed that the cooler had broken and when it was working the pumps dispensed Carlsberg, Guinness and Duchy Bitter (a keg-only St Austell product)! There were only cans of beer available at a hefty £2 each.



St Agnes, smaller than the aforementioned islands, has one outlet. As you stroll from the quay, the Turks Head and Ind Coope Burton Ale (£1.60 a pint) await. If you are hungry, the Turks Head sells what are reputed to be the finest pasties on all the islands - at £2.50, each is a meal in itself. To this particular inn there is also a regular evening boat run, giving one a few hours to enjoy its facilities.

That more or less sums up the Scilly Isles. There may not be an awful lot in the way of choice, but what there is is of excellent quality and the surroundings are beautiful.

One or two tips for the interested traveller. There are few cars, if any, on some of the islands and there is not much in the way of public transport - walking is the norm. Certain boats which deposit you on the islands do not always return from the same place as there are different quaysides, so listen to the directions given by the boatmen before alighting!

\*\*\*\*\*

Contributors to this issue: Roger Hall, Roger Wood, Paul Roberts, Peter Wadsworth, Peter Barnes, Stewart Revell, Mark MacConachie, Keith Egerton, Paul Mason, Steve Smith

\*\*\*\*\*



THE

# BEER ENGINE

69 Poolstock, Wigan, Tel: 0942 42497



## 3rd Annual Beer, Pie & Music Festival

Thursday 30th Sept., Friday 1st Oct., Saturday 2nd, Sunday 3rd

*Over 30 Real Ales, German Lagers on Draught  
Imported Bottled Beers & Lagers*

*10 Bands & Jam Sessions, Bring Yer Gear.  
Laurel & Hardy Films, George Formby Films*

*10 Varieties of Pies including Vegetarian and Specialist Pies  
Exclusive to the Festival.*

*After Pie Mint (Uncle Joe's Mintball) with Every Pie*

		Admission
Thursday 30th Sept	The Beer-Barons Oompah Band	
7.30 - 11.00 pm	& Support Harry Pemberton	£2.50
Friday Day Session	The Beer-Engine Ram Jam	
12noon - 6.30	Band & Guests	£1.50
Friday Night	Skeleton Crew (R&B) &	
7.30 - 11.00 pm	The Bogg Trotters (9 Piece Folk Rock Band)	£4.50
Saturday Day	Red Moon Joe (Country Rock)	
12noon - 6.30	Pearl & the Prairie Dawgs (Texas Swing)	£3.00
Saturday Night	La Cucina (Neapolitan Accordion Driven Funky Rockers)	
7.30 - 11.00 pm	Bon Temps Playboys (7 Piece Cajun Band)	£4.50
Sunday Lunch	Guest Bands & Jam Sessions	£2.00
12noon - 4.00 pm	Right Band Wrong Planet	

All Admissions include Commemorative Glass & Programme

*Every Week up to Fifteen Traditional Beers from around the Country*

# Now & Then

Rob Magee

No.79

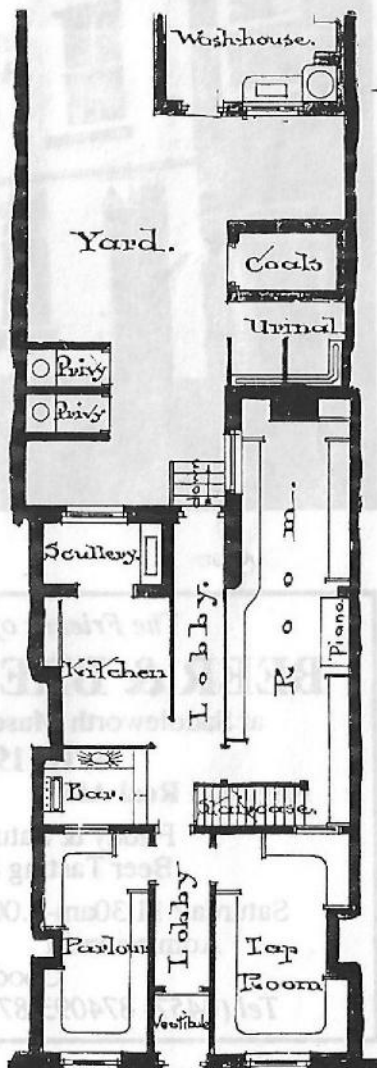
**Ashton Arms**

28,30 Clegg Street, Oldham

In July 1868 a Mr Partington obtained an excise licence and converted his grocer's shop on Clegg Street into a beerhouse called the Bricklayers Arms. A few weeks later he turned up at the magistrates' court to apply for a music licence. Mr Worthington, the chief magistrate, nearly fell off his seat when he heard that someone had opened a beerhouse on so important a street - and right opposite the office of the Chief Clerk to the Council!

The Bricklayers managed without the music licence, but it wasn't a good ornament to Clegg Street by the time the police inspected the premises in 1886. The building was dirty and in need of repair and the backyard was shared with two cottages. Gartside's Brewery bought the house in 1894 and a few years later carried out a number of improvements. The plan reproduced here shows the property in 1900, when the old cottages at the back had been removed to open up the yard and make room for a washhouse. By this time the beerhouse had been renamed the Ashton Arms (Gartside's Brewery was in Ashton).

In 1953 the central doorway became a window and a new entrance was made where the parlour window had been. A bigger bar was constructed in part of the music room area, new lavatories were built and an attic room at the back was converted into a dormer. In 1959 Jim Parkinson, who had been running the Regent in the Market Place since 1941, and before that the Friendship at Mumps since 1920, wanted a quieter life and agreed to take the Ashton Arms providing it had a full licence. This was granted on 4th March 1959 and Jim stayed until 1963, when he was 73 years old.



The next big change came in 1985, when licensee Sylvia Diggle and her husband Michael bought the pub from Bass. In 1991 they took over the house next door and so today the Ashton Arms is a free house double its original size.



*The Friends of Saddleworth Museum*

## **BEER & BREWING FESTIVAL**

at Saddleworth Museum, Uppermill, near Oldham

**17th-19th September**

**Regional Real Ales**

**Continental Bottled Beers**

Friday & Saturday 7.30pm-11.00pm

Beer Tasting & Music Tickets £2

Saturday 11.30am-5.00pm Sunday 12 noon - 3.00pm

Admission £1

Concessions 50p

Good Food Served

*Tel (0457) 874093/870336 or call in at the Museum*



Following on from last month's brief report that Danny and Ann Grayson are leaving the Union Tavern, we are assured that the quality of the Holts beers will be maintained at the pub as their daughter Julie and her husband, Josh Cadogan, are taking the licence. Danny and Ann are moving to the Coach & Horses (Sam Smiths) on Eccles New Road some time in September.

Maintenance work and refurbishments continue at many Holts pubs. The Morning Star at Wardley is coming along fine and the extension is close to being finished. The Egerton (Cheetham) and the Woodthorpe are progressing well. The next pub to be given the treatment will be the Ellesmere Inn on King William Street, Winton, where Lil and Paul Finley have recently taken over.

It's nice to see Olympic Bid posters in many Holts pubs. When offering their support for the Manchester Olympics, I bet Holts weren't thinking of going as far as sacrificing one of their pubs! The Olympic City's Metrolink line to Ashton will see off the Grove in Clayton.

## Farnworth

Whilst all around us licensed houses are closing, yet another opens in Farnworth. The town now has its first wine bar, called Ferns. (It is said that the name Farnworth means "the place among the ferns".) The bar consists of a single room on two levels the lower one being paved with stone flags!

Vaux Samson is on sale at 117p (served rather cold) and Vaux bitter is also available (115p). The landlady ran the Black Dog at Belmont from 1979 until 1985 and earned the pub entries in the Good Beer Guide and the Good Pub Food Guide. At Ferns she will be providing food all day, including Sunday, in the bar and in the large restaurant upstairs, which also has handpulled beer.

Ferns has exceptional facilities for the disabled and its designers are to be congratulated in their work in making access to pubs easier for all.

## Kestrel

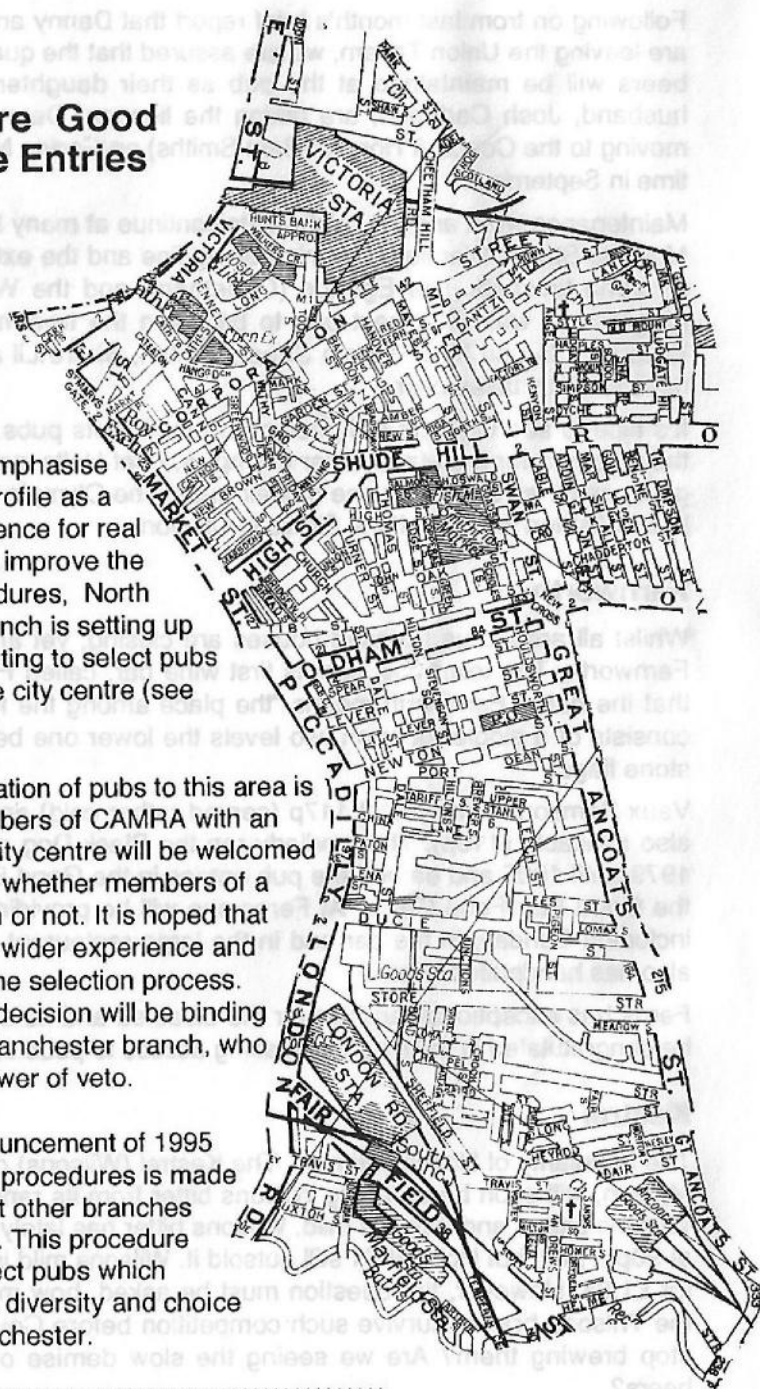
The popularity of Holts continues. The Kestrel (Wilsons) on Hugo Street, Moston, will soon be dropping Wilsons bitter from its range of Holts and Wilsons bitters and Wilsons mild. Wilsons bitter has lately been available at 90p a pint, but Holts at £1 still outsold it. Wilsons mild is safe and sells for £1.04. However, the question must be asked, how much longer can the Wilsons brands survive such competition before Courage/Websters stop brewing them? Are we seeing the slow demise of once-popular beers?

## City Centre Good Beer Guide Entries

In an effort to emphasise Manchester's profile as a centre of excellence for real ale pubs and to improve the selection procedures, North Manchester branch is setting up a separate meeting to select pubs in its area of the city centre (see map).

The initial allocation of pubs to this area is seven. All members of CAMRA with an interest in the city centre will be welcomed to the meeting, whether members of a CAMRA branch or not. It is hoped that this will bring a wider experience and expertise into the selection process. The meeting's decision will be binding on the North Manchester branch, who will have no power of veto.

The early announcement of 1995 GBG selection procedures is made in the hope that other branches may contribute. This procedure will help to select pubs which truly reflect the diversity and choice in central Manchester.



# Rupert

Upset I am. Mumsy's doing her fruit with Nestfeather for allowing people to suggest that I am doolally. All right. I might have thrown the odd brick at the lions but I didn't really intend to throw myself into the canal. After all, I did manage to escape from the sack when I was thrown in at birth. Our family has a history of failure in suicide. Great Uncle Cuthbert had both feet amputated when he lay on the wrong railway track in Dorset and Cousin Chloë spent an embarrassing fortnight in hospital when she mistook a bottle of laxative tablets for paracetamols. In any case I have no less than two certificates of sanity, which is more than most people can boast.

Nestfeather has written me a stiff letter telling me not to digress. "You are writing for the world's best-selling real ale organ," he begins. He says that only because all the others with print runs in the millions are given away. Could you see Charlie Super putting on his masthead "Britain's Biggest Give-Away Regional CAMRA Magazine"? Like as if. Nestfeather went on, "Our readers don't want to see irrelevant drivel which has got nothing to do with pubs or real ale and which is the product of a seriously disturbed mind." (He was in Cheadle Hulme at the time at an exhibition of nineteenth century hamster mourning cards.) "Keep to the point. If you don't, you'll be sacked." I didn't show Mumsy the letter and I didn't sulk for very long.

So, OK then. Pubs and the real ale scene, what's to say? Smarmford & Slutch have finally admitted that they're completely hopeless at campaigning, having allowed all the hostelries given to them by the

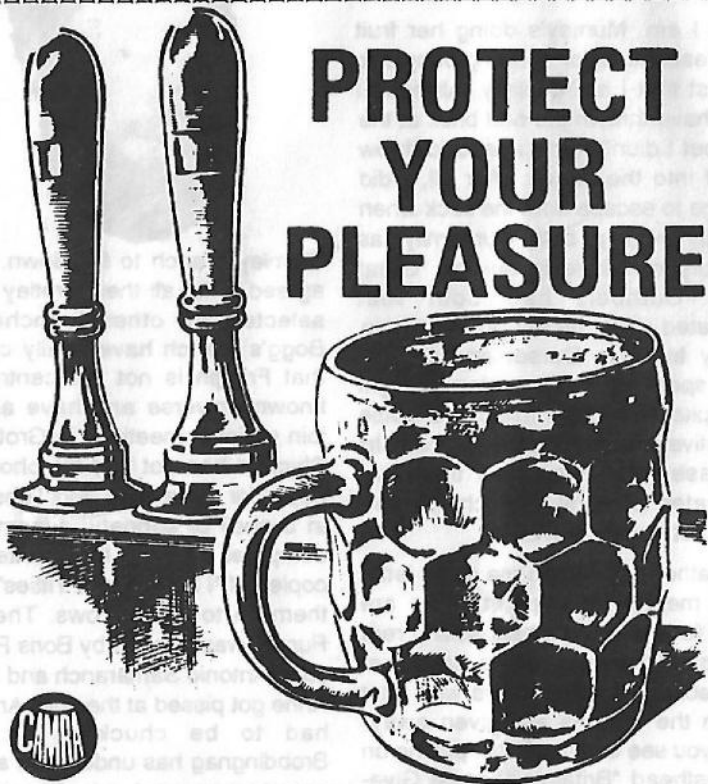


Slumley branch to fall down. They've agreed to let all their Grotley pubs be selected by other branches. Billy Bogg's branch have finally conceded that Friggin is not the centre of the known universe and have agreed to join regional meetings in Grotley. Billy Shippon has not had his photo in the paper for three days and Tubs Caries, in a spell of sobriety, dynamism and computer literacy, has printed 2,000 copies of "I Love Sue's Titties" and got them on to the barrows. The Dick & Puppet was opened by Boris Pratt, and Juan Antonio Samaranch and Princess Anne got pissed at the Jolly Angler and had to be chucked out. Efreem Brobdingnag has undergone a Pauline conversion and masterminded a management buyout of Strangleways Brewery from Dillons, and Dermatitis didn't fall on his face in Ben Chestnut's pub of the nanosecond in Snobley. Would that it were true. Little wonder, when all news is bad news, one falls back on speculation and minor daydreams. I've joined the Martyn Lewis Good News Club and am constantly scanning obituary columns to see if anything nice turns up, in the hope of meeting Eddy's harsh demands.

*Late News:* I understand that the opening of the Dick & Puppet is being delayed so as to coincide with the launch of "Ale of Two Cities".



# PROTECT YOUR PLEASURE



## JOIN CAMRA NOW

Just fill in the form below and send, with a cheque for £10 (payable to CAMRA Ltd) to Membership Secretary, CAMRA, 34 Alma Road, St Albans, Herts, AL1 3BW.

### APPLICATION FORM

NAME .....

ADDRESS .....

.....

..... POST CODE .....

I wish to join the Campaign for Real Ale, and agree to abide by the Memorandum and Articles of Association. I enclose a cheque for £10 (£14 if overseas).

Signed ..... Date .....

# Branch Diary

## Rochdale, Oldham & Bury

Tue 7 Sept 8pm, Branch Meeting, Dyers & Polishers Social Club, Oldham Road, Middleton

Tues 14 Sept 8.15pm, New Members Social, Flying Horse, Town Hall Square, Rochdale

Sat 18 Sept, Eccles "14" Pub Crawl - *phone contact for details*

Tues 21 Sept 7.30pm, Committee Meeting, followed by Extraordinary General Meeting at 8pm re GBG Criteria: Flying Horse, Rochdale

Tues 28 Sept 7.30pm. What's Doing Collation, Flying Horse. Rochdale

Sun 21 Nov. Great Belgian Beer Hunt. *Phone Ken Holt, 045 787 4268 for details.* Note correction from previous date given.

*Contact: Peter Alexander 061 655 4002 (h), 0532 324023 (w)*

## Trafford & Hulme

Thur 2 Sept, Committee Meeting, Vine, Kennedy Street, Manchester.

Thur 9 Sept, Ashton on Mersey Crawl. Meet Plough, 8.15pm

Sat 11th Sept, Chester Trip. *Details from Branch Contact.*

Thur 16 Sept, Chorlton Trip. 8.15 Lloyds, 9.30 Beech.

Thurs 23 Sept, Oxford Canal.

Thurs 30 Sept, Deansgate Ramble. Meet Crown 8pm and onwards to White Lion.

Sat 2 Oct, Annual Tyldesley Crawl. *Details from Branch Contact*

*Contact: Allan Glover 061 962 9890 (h), 0524 847930 (w)*

## Bolton

Thur 9 Sept 8.30pm, Branch Meeting, Dog & Partridge, Manor Street

Thur 23 Sept, Social & Crawl of Little Lever. Meet Jolly Carters 7.30pm, then on to Church, Horseshoe, Three Crowns, Queen Anne and possibly White Horse

*Contact: Judith Spragg 0204 595342 (h), 0204 397350 (w)*

## North Manchester

Wed 1 Sept, Swinton Crawl. Buckley 7pm, Football 8pm, White Lion 9pm.

Wed 8 Sept, Committee/Social, Ellesmere, King William Street, Winton, 8pm

Wed 15 Sept, Branch Meeting, Queens, Honey Street, Red Bank, 8pm

Wed 22 Sept, Ancoats Crawl. Starting at Grove, Clayton 7pm. Mitchell Arms, 8pm, Auld Lang Syne 9pm.

Wed 29 Sept, Buxton Trip. Train from Piccadilly 6.21pm. Returning 10.44pm.

Wed 6 Oct, Brewers Arms, Adelphi Street, Salford, 7pm. Peel Park, Chapel Street, 8pm, Salford Arms 9pm

*Contact; Roger Hall 740 7937*



# THE QUEENS ARMS

## FREE HOUSE

4/6 Honey Street (off Red Bank), Manchester

Tel.061 834 4239



Serving a large range of  
traditional ales supporting  
the independent breweries,  
including



### THEAKSTONS & TIMOTHY TAYLORS

Mild, Bitter, XB, Old Peculier,  
Taylors Best Bitter and Landlord  
and weekly guest beers from around the country

### WESTON'S TRADITIONAL CIDER ON HANDPUMP

*A selection of Continental  
bottled beers also available*

#### Opening Hours

Sun: 12.00-3.00, 7.00-10.30

Mon: 12.00-4.00, 7.00-11.00

Tues: 12.00-4.00, 7.00-11.00

Wed: 12.00-4.00, 7.00-11.00

Thur: 12.00-11.00

Fri: 12.00-11.00

Sat: 12.00-4.00, 7.00-11.00

#### Free

A large and varied selection of  
board games always available.

**We're in the Good Beer Guide  
and CAMRA's Good Food Guide**

Your hosts,  
Dave & Jo

