

25p

What's Doing

DECEMBER 1993



The Manchester Beer Drinker's Monthly Magazine

Historic Bolton pub to go

The Boars Head on Churchgate in Bolton looks set to be demolished. Greenalls have applied for planning permission to take down the early eighteenth century pub and properties on either side and to replace them with a four-storey office building.



A similar planning application in 1989 was rejected after the Borough Surveyor found that although the properties adjoining the pub needed attention, the Boars Head itself was in reasonable condition. Now the building is in danger of collapse and it seems likely that this latest planning application will be nodded through on safety grounds.

The Boars Head dates back to 1721 and was once the principal inn in the town. It came into Greenalls' hands in 1958 following their takeover of Bolton brewery Magee, Marshall & Co. (The old company monogram of two intertwined M's could be seen in stained glass at the pub right up until its closure in March 1992.) The pub made Good Beer Guide appearances in 1985 and 1986. Although Greenalls' 1989 plans include a new Boars Head at the bottom of a five storey building, the new plans are for four storeys of offices only.

Des Nogalski

September Late Licensing

Paul Mason

The later opening hours experiment in Manchester City Centre during September seemed to find favour with customers, the trade and the Greater Manchester Police.

The month started slowly but as the word went round there was a significant upturn in trade towards the month's end. The night of the Olympic bid decision, which was "midnight" opening, was compared by many landlords to New Year's Eve, with all city centre pubs packed. The police reported no increase in trouble caused by later hours and for many publicans drinking-up time was more relaxed than the usual 11.00 until 11.20 push to get everyone out.

This was a significant experiment that attracted a lot of media attention and both the GMP and the Home Office are producing reports on its success. Of course, a change in the national licensing laws is still some way off but the city council has helped with a postcard campaign to the Home Secretary called "Wish you were here in September". Many thousands are on their way to the House of Commons. A letter to your MP asking him/her to lobby for longer licensing hours to become a national debate will help speed the reform.

Liquid Liabilities

The Boddington Pub Company have got themselves into a bit of a mess with their guest beer operation. Their own subsidiary beer retailing company, Liquid Assets, is supplying a good range of independent brewers' beers (eg Morlands, Eldridge Pope, Banks & Taylor, Everards) to any customer except Boddingtons pubs! BodPubCo's pubs now have to choose guest beers from the Whitbread Cask Collection, which includes some well-regarded independents' beers such as Fullers and Brains but which is mainly composed of the portfolio of Whitbread-brewed beers from Cheltenham.

If you ask, you are given all sorts of abstruse reasons why it is better to have Cask Collection beers, but it is more likely to be a consequence of the long-term supply agreement which Whitbread negotiated with BodPubCo when they bought the Strangeways Brewery. It is interesting to speculate what will happen when the supply agreement runs out. There is no knowing who will have the best negotiating position or what price Boddington pub customers will pay in terms of choice, quality and value.

Pub Closures

Roger Hall

Forecasts of massive pub closures are nothing new. Here in the North West our legacy of densely concentrated pubs has been eroded quite quickly over the last two decades, particularly in the inner city areas of Manchester and its satellite towns. Many of these closures have been as a result of population movement and recession and have not really been commonplace in more affluent areas of the region.

It is likely that pub closures will continue and at an accelerating pace for the next decade and will begin to affect areas which have hitherto been immune. A shift in the age structure of the population and a change in social habits will combine to marginalise pubs in many areas. As leisure activities expand, pubs face competition from new directions. The separation of brewing from pub owning, high rents in pubs and heavy discounting to the retail trade will continue to widen the price differential between drinking in the pub and drinking at home.

We are already beginning to see pub closures in the outer suburbs, through both economic failure and social disintegration. Some inner city areas are virtually unpubbed and there is a real danger that the pub as an institution will be under serious threat.

CAMRA is unlikely to be successful in fighting a vanguard action against the emergence of premises such as café bars and eateries which respond to changing social tastes, although this is a fight worth fighting where their emergence destroys a traditional pub. We can, however, battle against the excessive prices which make pubs prohibitively expensive to a large section of the population. Eventually, perhaps, the unseen hand of market forces will operate to reduce prices and some evidence of this is beginning to emerge. Yet the big brewers have a vested interest to protect and by the time the market works we may well have lost a further 10,000 pubs nationally, perhaps 500 in Greater Manchester alone. It is an irony that at a time CAMRA when is at its most influential, the pub is under greater threat than at any point since Cromwell's Commonwealth.

Wigan

The guest beer range at the Good Beer Guide listed Orwell at Wigan Pier was extended considerably last month and the pub now also sells a traditional cider.

Another GBG listed free house, the Swan & Railway on Wallgate, has added a guest beer to its already wide range. Banks's mild and bitter, Bass mild, Stones bitter, Draught Bass, John Smiths bitter, Courage Directors and Camerons Strongarm are available. Pedigree has already come and gone and Batemans XXXB and others are promised soon.

Following the deal with Tetleys, the new Vaux pubs in the Wigan area include the Engineers at Ince and the Hare & Hounds, Ladies Lane, Hindley. The last named was previously a keg outlet and now sells Samson at 99p a pint.

Irlam News

The Red Rose Inn on Liverpool Road is selling real ale in the form of Vaux Mild, Light and Samson on handpump. Meanwhile, at the White Lion (ex-Sports), also on Liverpool Road, nothing is happening. It appears to be shut. The range of ales at the Tiger Moth, Swallow Drive, has increased to four - Chesters mild, Boddies and Pedigree have joined Joey's bitter.

Kings Ale

Leo King

Walkers Hotel

The latest Manchester free house (formerly the Royal Crown, Swan Street) has been transformed recently. The wall seating has been removed and replaced by chairs and the wooden floorboards exposed in the fashion popular with most real ale free houses. The pub has been smartly decorated throughout and there is a separate room at the back for meals. There are no noisy gaming machines or juke box and definitely no karaoke or discos!

The pub has six handpumps dispensing real ale from all over the country. The beers are reasonably priced and kept in excellent condition. On a recent visit these included Batemans XB (£1.10), London Pride (£1.20), Banks's Mild (95p), Marstons Bitter (£1) and Pedigree (£1.20). Compare these last two prices with those of Marstons own outlets. I have paid more than £1.20 a pint for just the bitter!

The opening hours are 12noon-3.00pm and 5pm-11pm Monday to Friday; 7pm-11pm Saturday (closed Sat afternoon); 12noon-3pm and 7pm-10.30pm Sunday.

Beer House

The Beer House on Angel Street, off Rochdale Road, is being altered. The bar counter has been modified to make more room for customers and this has meant a much smaller bar area and the number of handpumps has been reduced from eighteen to twelve. There used to be thirteen on the bar as you walked in the door (the other five being on the other side) but now as you go in the first thing you see are those bloody monstrous fizz fonts! But we can't really complain - twelve handpumps are better than twelve keg pumps!

Unicorn

Guest beers at the Unicorn on Church Street over the next few weeks will be: Greene King Abbot (from 9 Dec), Wadworths 6X (16 Dec), Highgate Old (23 Dec, 30 Dec), Youngs Special Bitter (6 Jan), Cains Formidable (13 Jan), Morlands Old Speckled Hen (20 Jan), Fullers London Pride (27 Jan) and Cains Bitter (3 Feb).

Bottle to Barrel

In October I wrote that I would like to see two bottled beers (Holts Sixex and Lees Archer Stout) in cask form, so imagine my surprise when I found that draught Archer Stout was on sale at the Bury Beer Festival at the end of that month! The beer was produced in response to a request from the Rochdale, Oldham & Bury branch of CAMRA, but it will probably remain a one-off. Mr Dennis, the head brewer at Lees, tells me that he doesn't think draught Archer Stout would be successful in the pubs as it is too sweet. It's a pity, really. We have oatmeal stout, porter stout, strong stout, etc, so what's wrong with a sweet stout?

More Micros

Finally, here are some more micro-breweries to add to the lists in WD Aug and Oct:

Branscombe Vale, Branscombe, Devon	Bridgwater Brewing Co, Somerset
Cheriton Brewery, Hampshire	Cooks, Christchurch, Dorset
Cottage Brewing Co, West Lydford, Somerset	
Daleside (ex Big End Brewery)	Hambleton Ales, Thirsk, N Yorks
Hobsons, Cleobury Mortimer, Salop	Lastingham Brewery, Malton, Yorks
Rother Brewing Co, Northiam, E Sussex	
Wheatsheaf Inn, Fromes Hill, nr Ledbury, Herefordshire	

Salford Unitary Development Plan

One of CAMRA's suggestions for Salford's plan has been adopted in part by the Council. CAMRA was concerned that listing (as in listed buildings) was not properly explained. The paragraph now states that buildings are listed in their entirety and that there should be a presumption in favour of preservation of listed buildings and buildings within conservation areas. A small but important victory, this puts one more hurdle in the way of brewers and pub owners who want to wreck classic features in pubs of quality. It may be too late to prevent the excesses of the past but it may put paid to similar plans in the future.

Good Pub Guide

A few copies of "Traditional Pubs of Old Lancashire", celebrating the diversity of pubs in the old county (including Greater Manchester and Liverpool), are still to be had. The book is well illustrated with photographs and contains details of 187 of the most distinctive pubs in Lancashire - the beers, catering information, family facilities, etc. There is also a section on all the local breweries.

Copies are available by post from Peter Barnes, 12 Ellesmere Road, Eccles, Manchester M30 9FH. Price £7.95 including postage.

Pub Campaigning

CAMRA's national Pubs Group is meeting in the Buffs Room of the Grapes, 431 Liverpool Road, Peel Green, Eccles on Saturday 8th January at 12 noon. Any interested local CAMRA members are invited to attend. The meeting will be quite boring but the Holts is good.

Amazing Stories

On a recent visit to the Dutton in Strangeways the friendly greeting was enhanced by a parrot that listens and then repeats everything said. This might be entertaining enough, but the new colour scheme in the gents is truly fantastic and not to be missed. The Dutton is surely the most fascinating pub in the area - unless, of course, you know different!

New Pub

BodPubCo's Moorings, the new pub at the old Boothstown Canal Basin, opened on 19th November.



British Beermat Collectors Society

Christmas is here again and so is the BBCS - at the Queens Arms, 4/6 Honey Street, Red Bank, Manchester. 12.00 noon start, Saturday 4th December. The meeting continues till closing time then afterwards we roll around Manchester. Non-members very welcome. Please contact Alan Gardner on 0772 455536.

THE STATION

ASHTON'S PREMIER FREE HOUSE

offers a selection of
hand pumped traditional ales
in a friendly atmosphere.

GUEST BEERS

from the smaller or more distant
INDEPENDENT BREWERIES
share the bar with
Boddies, Pedigree & Chester's Mild
plus interesting bottled beers.

Superb but inexpensive
LUNCHEONS

WE'RE OPEN ALL DAY

Monday to Friday

Saturday: 11.30-3.00/7-11.00, Sunday usual hours

Conservatory, Snug or Function Room

for meetings & parties

Ring Sylvia - 330 6776

WARRINGTON STREET
ASHTON-U-LYNE

(NEAR BY-PASS)



Strangeways Heritage Centre?

The Royal Oak on Great Ducie Street, a characterful pub, renowned for its aroma of brontosaurus vomit and its spartan interior, was knocked down some years ago to make way for the Brewers Arms. This flagship venture was intended to be all things to everyone but ended up being few things to anybody. It's been closed for some time. However, things are looking up. Whitbread are so busy with visits to Strangeways Brewery that they're converting the premises into a visitors' centre for the hordes of enthusiasts who flock to this shrine of gritty Northern excellence.

Short Measure

The Government has bowed to pressure from the brewery lobby and reneged on its promise to legislate for a full pint. Section 43 has been abandoned and it may now be some time before we get what we pay for - a full pint of beer.

Whose pub is it?

As What's Doing has reported previously, the proliferation of pub-owning groups has fragmented the ownership of pub businesses. In order to throw some light on this, CAMRA's annual price survey on City Centre pubs has, for the first time, included a question on ownership of the business. The results of the survey will be published in January's edition.

Son of Brief Encounter

A film company has spotted Stalybridge Station as an ideal location for a forthcoming epic. The luvvies fell head over heels in love with the place, which has largely avoided the rudimentary shed minimalism of those few halts and stations which remain in this postmodern age. So the station buffet is set to follow in the footsteps of the Lamb and the Kings Arms as a star of the silver screen (OK, the box). However, progress has not left even Stalybridge unscathed and it will be necessary to restore the station and the buffet to their Victorian splendour before the cameras roll. After filming is complete, the difficult decision will have to be made as to whether the buffet should retain its restoration or be reresetored to its pre-1994 state.

Jolly Angler

Just as we thought the campaign to save the Angler was won, Manchester has to go and make a bid to host the 2002 Commonwealth Games. Although the received wisdom among planners is that they would never have knocked it down anyway, could there be a Commonwealth Village in Ancoats which makes the Angler inconvenient? We should be told. A clear statement from the planners that the Angler is safe for ever would do and save a lot of effort and heartache.

Old Mill revival

For some time trade has been in the doldrums at the Old Mill in Altrincham, with its uninspiring range of beers, but now the pub may be heading for a revival. Websters Yorkshire Bitter, Marstons Pedigree and at least one guest beer (currently from the Coach House Brewery) are on sale and if trade increases sufficiently further guest beers will be introduced. Pricing is keen for the area - the Old Mill is at least 10p a pint cheaper than other pubs selling similar beers.

Bolton News

Des Nogalski

There are signs that the Brinsop Arms on the A6 between Westhoughton and Blackrod may be open again soon. A licence application on behalf of new owners Leonard and Barbara Young will be heard in Bolton on 1st December. The Brinsop was a Bass pub known as the New Inn until the mid-seventies, when it was sold into the free trade and began to offer the widest choice of real ales in the area. In 1983 it was bought by a partnership which included Londoner Jim Hardy. Jim later bought out his partner and began to expand the Brinsop into a hotel and conference centre, but this didn't work out and the pub closed in July 1990. Shortly afterwards there were rumours that it would reopen selling Greenalls products, but the doors have been firmly shut ever since.

The Cattle Market at the junction of Orlando Street and Nelson Street has received a boost in custom with the opening of the Orlando Village student accommodation complex just across the road. Boddingtons bitter is now on offer at £1 a pint most evenings, with the result that the pub is often packed with students disposing of their grant cheques in time-honoured fashion. Morland Old Speckled Hen and Thwaites bitter are also on sale as guest beers.

Tetley Imperial is now on sale at the Clifton Arms on Newport Street and the Sweet Green Tavern on Crook Street...The Malt & Hops Bar at the Swan Hotel has cut the price of its guest beers by up to 20p a pint, bringing many guests into the more reasonable £1.20-a-pint range...The White Lion at the corner of Moor Lane and Deansgate has been closed for some months, awaiting new lessees. Nearby, the Hen & Chickens was rumoured to be next on Greenalls demolition list but the pub's manager has agreed to take on the tenancy...The George on Great Moor Street is still looking for a long-term lessee if the sign outside the building is to be believed. A succession of short-term licensees has been at the pub in the past year or so...Finally, some club news. Bolton Anglers Club on Rishton Lane now sells handpulled Ruddles bitter.

Kendlegate Wine Cellars Ltd

164 Northgate Rd, Edgeley. Tel: 477 3939

Wide range of cask beer available to order
Increasing range of Belgian and Continental beers

NEW! TASTINGS ON THE FIRST SATURDAY OF THE MONTH

JANUARY 8th - ENGLISH BEERS

COME ALONG AND TRY SOME BETWEEN 12 and 3pm

SPECIAL OFFERS AVAILABLE AT THESE TASTINGS

**Note: We operate under Wholesale Licensing Regulations, therefore
minimum purchase is 24 bottles beer or 12 bottles wines/spirits,
which can all be different**

Open Monday-Friday, 10am-5pm

Closed from 5pm 22nd Dec. Reopens 10am Wed 5th Jan 1994

Telephone orders accepted on a COD basis

Holts Corner

Stewart Revell

Sadly, Holts have had to abandon all hope of keeping the Sabre in Ordsall because of the problems in that area. They have sold the building to Wimpey.

The annual price rises are usually at the end of November, but this year, with a budget due on Nov 30th, Holts put a penny on a pint in the first week of November. Perhaps they are hedging their bets in case there is a further increase in beer duty. Pre-budget prices are 90p for mild and 96p for bitter. There is always a chance that beer duty will rise, but the price of a pint of Holts could still stay under a pound.

The refurbishment at the Morning Star in Wardley is most pleasing and the extension blends in quite well with the old part of the pub; the locals are delighted with the results. A large kitchen has been provided to cater for lunchtime trade.

Boddingtons Brewery trip

Paul Mason

CAMRA members were invited to visit Boddingtons Brewery by the Whitbread Beer Company on the evening of November 11th and we enjoyed a guided tour of an ever-expanding brewery which was operating flat out and had a surprising number of staff on duty. Unfortunately a serious steam breakdown was causing some concern during the visit.

The Strangeways Brewery was established in 1778 and much of the present building dates from 1881. It is a traditional "tower" brewery and since Whitbread took over in 1989 it has enjoyed considerable investment as Boddingtons bitter production has increased. Recent improvements include a change from coal-fired to oil-fired boilers, an automated yeast recovery plant and covers over all the fermentation squares.

Four beers are brewed at Strangeways: Boddingtons bitter and mild, plus OB bitter and mild. 95% of the production is given over to Boddingtons bitter and the other three brands are only produced once a week. All the beer is brewed using well water from under the brewery site.

After our visit the generous hospitality in the tap room was enlivened somewhat by the sight of a coach party from Fleetwood who were enjoying pints of Stella Artois rather than sampling the beer they had come to see being brewed!

Swinton & Pendlebury

Elderly readers may remember a two-part television programme in 1976-ish about the public house. The second part, about the future of the pub, featured the Duke of Wellington in Pendlebury. A modern, open-plan, noisy, keg Whitbread hell-hole, this was the way all pubs were going to have to go if they were to survive the 1980s and 1990s. Well, the Duke of Wellington has been boarded up for years and now we hear the building has been sold and it will become an Evangelist Church. The tragedy is, some people actually believe what they see on television.

The Albert on Bolton Road is selling Hartleys XB as a regular guest beer at £1.20 a pint. The Cricketers in Swinton is experimenting with all day opening, Monday to Saturday, until the New Year.

ATHERTON & TYLDESLEY

ROUND TABLE

IN CONJUNCTION WITH CAMRA

PRESENT THE FIFTH



At the **FORMBY HALL, ATHERTON**

27th 28th 29th JANUARY 1994

"A WINTER ALE SPECTACULAR"

PROCEEDS IN AID OF LOCAL CHARITIES

OPENING TIMES AND ADMISSION COSTS

THURSDAY 27th Admission £3.00: 6.00pm to 11.00pm

FRIDAY 28th Admission £3.50: 6.00pm to 11.00pm

(Glass and Programme included)

SATURDAY 29th: 12 noon to 4.00pm and 7.00pm to 11.00pm

Admission Cost: £2.50

(Glass and Programme included)

ALL CAMRA members get £1.00 off the admission cost

MAIN SPONSORS

Hi Tech Scaffolding
Eclipse Prints

Leigh Glass Ltd
Atherton Windows

Cask Sams 2

Further to the news in last month's WD about Sam Smiths pubs being converted to cask ale, the Coach & Horses on Eccles New Road, Weaste, now has Old Brewery Bitter on handpumps at 105p a pint.

Britannia sunk?

The Britannia (Wilsons) on Newton Street, Manchester has been shut for several weeks now. No explanation for the closure (refurbishment, change of owner/licensee, etc) is forthcoming.

Ye Olde Nelson

Money for widening the A6 on Chapel Street is a little slow in coming forward so Ye Olde Nelson is safe for the moment. Whitbread have turned a blind eye to the potential threat and have carried out essential maintenance and redecoration at the pub, which would seem not to herald imminent demolition.

Licensing Reform

Our unsubstantiated rumour department reports a leak from a usually reliable source indicating the Government proposals in response to the consultation document on Licensing Reform. It is likely that Children's Certificates will be introduced and that the criterion of need will be retained. It seems that no special licence for Café Bars is envisaged. Watch this space.

Bulls Head to stay

When Phil and Judith Hanbridge took over the Bulls Head at Walkden they ran a competition to re-name the pub. But everybody wanted it to keep the name it has had for the last 150 years or more and so the prize money was donated to a local charity. Phil and Judith came from the Volunteer at Sale when that pub was taken over by Holts. At the moment the only cask beer at the Bulls Head is Boddies (£1.26), but there are plans for a guest beer and it may even become a Whitbread Cask Ale House.

(The purple paint mentioned in last month's item turned out to be the undercoat - the final colour is a pleasant dark blue!)

Bridgwater beer to appear

The Beech, just off Chorlton Green, currently sells nine handpumped beers and in the New Year these will be joined by a tenth. It is hoped that beers from the new Bridgwater Brewing Company will be featured, and the Beech also promises a mini beer festival at Easter 1994.

New Pub

Bass have converted the Gemstone, a café-bar-type joint on St Mary's Street in Manchester into a real ale pub called H R Fletcher. It opened on 22nd November selling Draught Bass, Highgate Old, Dark and Bitter; Youngs Special, Wadworths 6X, Worthington Best and guest beers are promised.

Contributors to this issue: Mark McConachie, Roger Hall, Ian Kenny, Keith Egerton, Stewart Revell, Des Nogalski, Peter Barnes, Leo King, Brian Gleave, Paul Mason.

Letters

Big Five Beers

Sir - Your reporter's concern about the possible loss of "regional beers" presently brewed by the Big Five (front page, November WD) was misplaced. Over half of the brand names listed are produced at breweries far removed from their original location. I doubt if anyone would mourn the passing of the insipid maltades that pass for Wilsons, Fremlins and Shipstones these days, and the perpetuation of these ersatz products merely serves to mislead the public into thinking that the range of ales, and therefore breweries, is wider than it actually is.

There is no shortage of fine breweries in the North West - Oak, Coach House and Moorhouses, to name but three - that are looking for bar space in the pubs run by the Nationals. The success of Cains beers on Merseyside proves that even a brewing giant like Whitbread can bow to popular demand and pressure. If CAMRA activists in our area can promote and support local products in the same way, then "regional beers" worthy of the term will survive, and the likes of OB, Wethereds and Matthew Brown can be consigned to the archives, where they belong.

Dave White

Trams and Trains

Sir - Regarding the saga of the proposed Metrolink extension towards Ashton, which I have followed with interest. Naturally, I hope the Grove and the Sir Humphrey Chetham will be saved. I am NOT one of those who has been conned into thinking that Metrolink is the greatest thing since sliced bread. Consider the following:

1. Once former BR lines have been converted to "light rail" they can no longer be used for proper trains, freight or passenger.
2. Quality of ride. I have ridden on thirty-year-old BR diesel electric units (eg to Hazel Grove or Warrington Central) with better quality of ride than Metrolink trams, especially on the line to Bury. So much for "state of the art technology"!
3. Unlike trams, virtually all BR trains have toilets.
4. "Standard Fare". £10 is payable by those without a ticket, however far they have travelled. This in spite of the fact that stations have no staff. BR do not do this - if you are without a ticket, you are charged one single fare. Do Metrolink really believe their passengers are less honest than British Rail's?
5. Fare levels. It costs £2.40 (off peak) for just one return journey from Manchester to Altrincham or Bury and back. Yet for just £2 I can travel ALL DAY on BR within Greater Manchester - from Hall i'th'Wood to Hazel Grove, Mossley to Marple, Glossop to Gatley, etc. Which is the better value?

Kim Rampley

Students

Sir - I am a student at Salford University and went along to the Student Social at the Crescent run by CAMRA. There didn't seem to be many CAMRA people there and when I enquired, it turned out that the Student Liaison Officer hadn't bothered to organise anything or even come along. The Membership Secretary and the Publicity Officer weren't there either. The Chairman, Vice Chairman, Secretary and Treasurer all had more important engagements as well. We did enjoy the butties provided by the pub, but if CAMRA is serious about attracting students to Real Ale you need to get your act together!

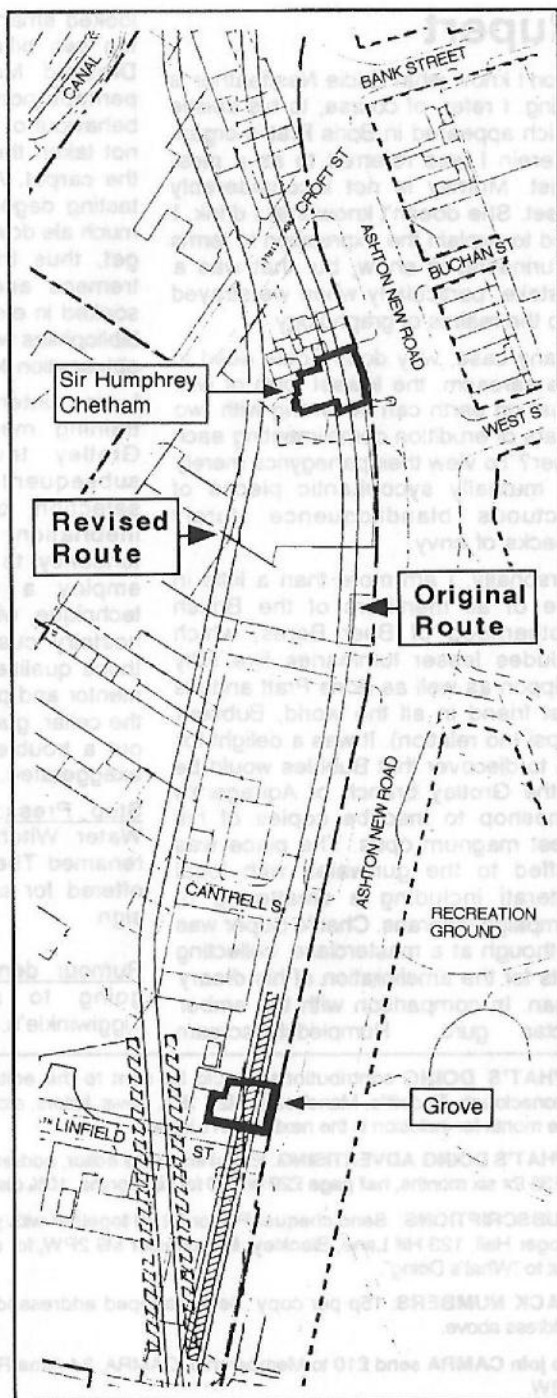
Maxwell Hall

Tramlines

CAMRA welcomes investment in public transport ("Don't Drive and Drink - Get Metrolink" and all that) but we took exception to the Greater Manchester Passenger Transport Authority's plan to demolish three pubs on the proposed line to Ashton.

Customers of the Auld Lang Syne, the Sir Humphrey Chetham and the Grove put their names to petitions to try to make the planners see the errors of their ways and on 25th October two of these petitions were handed over to Councillor Jack Flanagan (Chairman of the Metrolink Working Party) by Clayton & Beswick Councillor Bill Egerton. The Sir Humphrey Chetham didn't take part in the exercise because the owners, Whitbread, said they didn't need CAMRA's help and they would look after their licensee.

An alternative route along Ashton New Road has now been drawn up. The plan reproduced here shows the original line going through the Sir Humphrey Chetham and the adjacent shops, and a tram stop on the site of the Grove. The alternative line goes behind the Ashton New Road properties and the tram stop is re-sited behind the Grove. Much better!



Rupert

I don't know what Eddie Nestfeather is doing. I refer, of course, to his epistle which appeared in Boris Pratt's organ, wherein I was referred to as a piss-artist. Mumsey is not inconsiderably upset. She doesn't know that I drink. I tried to explain the expression in terms of urinating in snow, but that was a mistake, particularly when we strayed into the realms of graphology.

In any case, why does Eddie need to use sarcasm, the lowest form of wit? What on earth can be wrong with two pillars of erudition complimenting each other? To view their panegyrics merely as mutually sycophantic pieces of unctuous blandiloquence surely smacks of envy.

Personally, I am more than a little in awe of all members of the British Brotherhood of Beer Bores, which includes lesser luminaries like Billy Shippon as well as Boris Pratt and his best friend in all the world, Bubbles Pepsi (no relation). It was a delight for me to discover that Bubbles would be at the Grotley branch of Aquagem's tomeshop to inscribe copies of his latest magnum opus. The place was stuffed to the gunwales with local glitterati including a smattering of Campaign veterans. Charlie Super was as though at a masterclass, collecting hints for the amelioration of his dreary organ. In comparison with the amber nectar guru, Rumpleshirtscream

looked smart and has edged into the top two billion in the World's Best Dressed Man list. Aquagem's are perhaps not entirely au fait with the behaviour of those at a tasting and had not taken the precaution of rolling up the carpet. As the evening wore on, tasting degenerated into throwing as much ale down your neck as you could get, thus triggering latent delirium tremens and resulting in a carpet soaked in exotic amber nectars. Aged bibliophiles were swooning from instant obfuscation for three days afterwards.

I was interested to discover the training methods employed by a Grotley tavern-owning company subsequent to recruitment and selection based on dishevelled inebriation, incoherence and a tendency to "snap". It seems they employ a sitting next to Nellie technique, where Nellie is an existing hostelry custodian who possesses those qualities in spades. Reports of mentor and protégé lying comatose in the cellar, gurgling after having thrown out a trouble-making nun are surely exaggerated.

Stop Press: I understand that the Water Witch in Friggin has been renamed The Foghorn with Piles. £5 offered for a photograph of the inn sign.

Rumour denial: Charlie Bass is not going to move back to Mrs Tiggiwinkle's.

WHAT'S DOING contributions should be sent to the editor c/o 88 Ringley Road, Stoneclough, Radcliffe, Manchester M26 1ET. News, letters, etc, must arrive by the 20th of the month for inclusion in the next month's issue.

WHAT'S DOING ADVERTISING: Enquiries to the editor, address above. Full page £30 or £135 for six months, half page £20 or £90 for six months. 10% discount for payment up front.

SUBSCRIPTIONS: Send cheque/PO for £2.70 together with your name and address to Roger Hall, 123 Hill Lane, Blackley, Manchester M9 2PW, for six issues. Cheques made out to "What's Doing".

BACK NUMBERS: 15p per copy. Send stamped addressed envelope to Roger Hall, address above.

To join CAMRA send £10 to Membership, CAMRA, 34 Alma Road, St Albans, Herts AL1 3BW.

Branch Diary

Regional Meeting

Wed 8 Dec 8pm, Unicorn, Church Street, Manchester. All agenda items to Judith Spragg, Bolton Contact

Trafford & Hulme

Thur 2 Dec 8pm, Committee Meeting, Jolly Angler; White House, Land o'Cakes, etc.

Thur 9 Dec 8pm, Xmas Curry. Meet at the Albert, 8pm.

Thur 16th Dec 8pm, Alty Survey: Tatton, Grapes, Bridge, Malt Shovels, Orange Tree.

Thur 23 Dec 8pm, City Centre Survey: Vine, City, etc.

Thur 30 Dec 8pm, Knutsford Survey. Starting in the Builders.

Thur 6 Jan 8pm, Woolpack & Crown, Stockport.

Weekend of 14th & 15th Jan: Branch Trip to Brussels.

Contact: Allan Glover 061 962 9890 (h), 061 872 2373 (w)

Bolton

Thur 2 Dec 8.30pm, Branch Meeting, Sweet Green, Crook Street. Includes GBG 1995 nominations.

Tue 28 Dec, Crawl & Curry. Meet Lord Clyde 7pm, then Dog & Partridge, Man & Scythe, 8.30pm Malt & Hops, 10pm Sweet Green, then Sunar Gaw, Manchester Road, for curry.

Thur 6 Jan 8.30pm, Branch Meeting. Includes GBG 1995 nominations. Details later.

Thur 20 Jan, GBG 1995 shortlisting. Details later.

Contact: Judith Spragg 0204 595342 (h), 0204 397350 (w)

Rochdale, Oldham & Bury

Tues 7 Dec 8pm. Branch Meeting, Crown & Shuttle, Firgrove, Milnrow

Tues 14 Dec 8pm. Christmas Social - All welcome. Royal Oak, Mumps, Oldham

Tues 21 Dec 8pm. Committee Meeting, Flying Horse, Town Hall Square, Rochdale

Tues 4 Jan 8pm. Branch Meeting, Woodthorpe, Prestwich

Contact: Peter Alexander 0532 324023 (w), 061 655 4002 (h)

Wigan

Mon 13th Dec, Branch Meeting, Beer Engine, Poolstock, 8.30pm

Fri 17th Dec, Christmas Cracker Curry Crawl. 7pm Old Pear Tree, 7.30 Tudor.

Contact: Brian Gleave 0942 840658

North Manchester

Wed 1 Dec. Charlestown Crawl: Old House at Home, Whit Lane, 7pm; Beehive, Holland Street, 7.30; Church, Ford Lane, 8pm; Unicorn, Broughton Lane, 9pm.

Wed 15 Dec. Branch Meeting, Crescent, Salford, 8pm

Wed 22 Dec. Social: Woodthorpe, Bury Old Road, Heaton Park, 8pm

Wed 29 Dec: Christmas Social. Crawl & Curry. Dutton, Park St, noon: Yates's, High Street, 2pm; Curry at This & That, Soap Street, 4pm.

Wed 5 Jan: City Centre Good Beer Guide Shortlisting Meeting: Kings Arms, Bloom Street, Salford, 8pm.

Contact: Roger Hall 740 7937

THE QUEENS ARMS

FREE HOUSE

4/6 Honey Street (off Red Bank), Manchester

Tel.061 834 4239



Serving a large range of
traditional ales supporting
the independent breweries,
including



THEAKSTONS & TIMOTHY TAYLORS

Mild, Bitter, XB, Old Peculier,
Taylors Best Bitter and Landlord
and weekly guest beers from around the country

WESTON'S TRADITIONAL CIDER ON HANDPUMP

*A selection of Continental
bottled beers also available*

Opening Hours

Sun: 12.00-3.00, 7.00-10.30

Mon: 12.00-4.00, 7.00-11.00

Tues: 12.00-4.00, 7.00-11.00

Wed: 12.00-4.00, 7.00-11.00

Thur: 12.00-11.00

Fri: 12.00-11.00

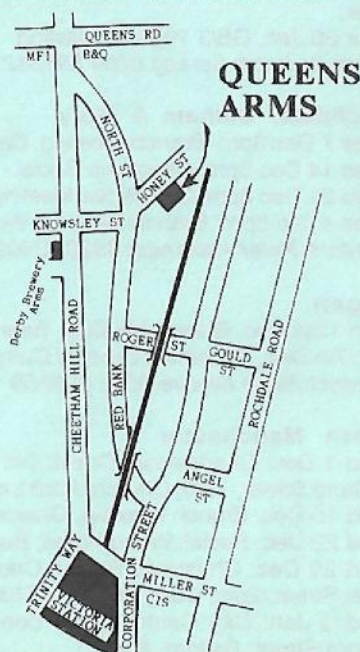
Sat: 12.00-4.00, 7.00-11.00

Free

A large and varied selection of
board games always available.

**We're in the Good Beer Guide
and CAMRA's Good Food Guide**

*Your hosts,
Dave & Jo*

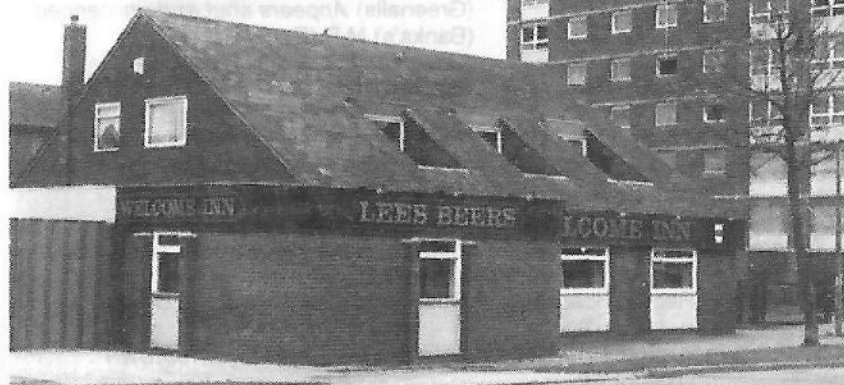


A2C2

The Series

The Manchester & Salford Pub Guide

Part 2

Salford**Broughton with Kersal, Littleton Road and Salford 8**

Albert Inn	Short Street	(Free) Worthington BB, Stones (H)
Albert Park	Great Clowes St	(Bass) Bass M, Special B; Websters B(H)
Bridge Inn	Lwr Broughton Rd	(Bass) NO REAL ALE
Broughton	Gt Cheetham St E	(Whitbread) Chesters M, Boddies B (H)
Byroms	Littleton Road	(Tetley) CLOSED & BOARDED
Carlton Inn	Camp Street	(Burtonwood) B (H)
Castle	Cheadle Avenue	(Greenalls) NO REAL ALE
Church Inn	Hilton Street	(BodPubCo) Boddies M,B, Old Shilling (H)
Dover	Fenney Street	(Greenalls) B (H)
Dover Castle	Highclere Avenue	(Burtonwood) B(H)
Duke of York	Marlborough Road	(Holts) M,B (H)
Griffin	Lwr Broughton Rd	(Whitbread) Chesters M, Boddies B (H)
Grosvenor	Great Clowes St	(Whitbread) Chesters B, Boddies B (H)
Horseshoe	Back Hope Street	(Bass) Worthington BB, Stones (H)
Jacks	Bury New Road	(Grand Met) NO REAL ALE
Kersal	Moor Lane	(BodPubCo) Boddingtons M,B (H)
Kildakin	St Kildas Drive	(BodPubCo) CLOSED
Old Priory	Priory Grove	(Temple Inns) <i>Due to reopen Dec. 1993</i>
Palatine	Edward Street	(Greenalls) NO REAL ALE
Prince of Wales	Lwr Broughton Rd	(Sam Smiths) Old Brewery Bitter (H)

Racecourse	Littleton Road	(Greenalls) M,B,Original, Stones (H)
Royal Archer	Lwr Broughton Rd	(Centric) <i>NO REAL ALE</i>
Star Inn*	Back Hope Street	(Robinsons) BM, BB (E)
Unicorn	Lwr Broughton Rd	(Whitbread) Boddies, Trophy (H)

Ordsall with the Docks, Liverpool Street and Oldfield Road

Bricklayers Arms	Ordsall Lane	(Holts) M,B (H)
Broadway	Broadway	(Holts) M,B (H)
Druids Arms	Liverpool Street	(Lees) <i>CLOSED - awaiting new licensee</i>
Flying Dutchman	Waterfront Quay	(Free) <i>NO REAL ALE</i>
Hobsons Choice	Oldfield Road	(Whitbread) <i>CLOSED - fire damaged</i>
Jollies	Oldfield Road	(Lees) B (H)
Jubilee	Tatton Street	(BodPubCo) Boddingtons M,B (H)
Liner Bar	Trafford Road	(Greenalls) <i>Appears shut and unlicensed</i>
Old Pump House	Clipper Quay	(Banks's) M,B (E)
Ordsall	Ordsall Lane	(Grand Met) <i>CLOSED & BOARDED</i>
Park Royal	Regent Road	(Burtonwood) <i>CLOSED & BOARDED</i>
Quay House	The Quays	(Whitbread) Boddies, Flowers IPA (H)
Pier 6	Clipper Quay	(Toby/Bass) <i>NO REAL ALE</i>
Prince of Wales	Oldfield Road	(Free) Chesters M, Boddies B, Lees B (H)
Railway	Oldfield Road	(John Smiths) <i>NO REAL ALE</i>
Sabre	Taylorson Street	(Holts) <i>Shut indefinitely</i>
Union Tavern*	Liverpool Street	(Holts) M,B (H)
Welcome*	Robert Hall Street	(Lees) M,B (E/H)
Wellington	Regent Road	(BodPubCo) Boddingtons M,B (H)

Pendleton including Brindleheath, Brunswick and Charlestown

Beehive	Holland Street	(Greenalls) Greenalls B, Stones (H)
Brass Handles	Edgehill Close	(Whitbread) Boddies B, Thwaites B (H)
Brass Tally	Westerham Ave	(Greenalls) <i>CLOSED - Fire damaged</i>
Bridge	Strawberry Road	(Tetley) <i>NO REAL ALE</i>
Church Inn	Ford Lane	(Grand Met) Holts B (H)
Corporation	Cross Lane	(Grand Met) Websters Green Label, John Smiths B, Wilsons B (H)
Duchy	Brindleheath Road	(Greenalls) <i>NO REAL ALE</i>
Flat Iron	Fitzgerald Way	(Whitbread) Chesters M, Boddies B (H)
Flemish Weaver	Belvedere Road	(Whitbread) Chesters M, Boddies B, Trophy (H)
Golden Gate	Cross Lane	(Free) Boddingtons (H)
Kettledrum	Heywood Way	(Bass) <i>NO REAL ALE</i>
Keystone	Market Way	(Burtonwood) <i>NO REAL ALE</i>
Kings Arms	Langley Road S	(Tetley) <i>NO REAL ALE</i>
Mariner	Liverpool Street	(Grand Met) Wilsons B (H)
Maypole	Broughton Road	(Centric) <i>NO REAL ALE</i>
Old House at Home	Whit Lane	(Holts) M,B (H)
Paddock	Cross Lane	(BodPubCo) Boddies (H)
Pied Piper	Broadwalk	(Tetley) Websters B (H) <i>sporadically</i>
Priory	Gardner Street	(BodPubCo) Boddingtons M,B (H)
Railway	Broughton Road	(BodPubCo) Boddingtons M,B (H)
Ship	Cross Lane	(Vaux) Samson (H)
Unicorn	Broughton Road	(Tetley/Free) Tetley M,B; Lees B (H)
Wallness	Wallness Lane	(Tetley) Tetley B, Theakstons BB (H)

Winston	Churchill Way	(Holts) M,B (E)
Woolpack	Belvedere Road	(Temple Inns) Boddies (H)

Chapel Street with Trinity, Adelphi, etc

Adelphi Riverside	Crescent	(Tetley) Tetley B, Jennings B (H)
Albert Vaults	Chapel Street	(Burtonwood) B (H)
Bell Tower	Chapel Street	(Free) <i>NO REAL ALE</i>
Bird in Hand	St Stephen Street	(Banks's) <i>NO REAL ALE</i>
Black Friar	Blackfriars Road	(BodPubCo) Higsons M, Boddies B (H)
Black Horse	Crescent	(Greenalls) Greenalls B, Stones (H)
Black Lion	Chapel Street	(Centric) <i>NO REAL ALE</i>
Braziers Arms*	Hodson Street	(BodPubCo) Boddington M,B (H)
Brewers Arms	Adelphi Street	(Burtonwood) B (H)
Broughton Tav	Blackfriars Road	(Greenalls) <i>CLOSED & BOARDED</i>
Brown Bull	Chapel Street	(Marstons) <i>CLOSED - no licence</i>
Buskers	Blackfriars Road	(Whitbread) Chesters M, Boddies B (H)
Cathedral Arches	Chapel Street	(Free) Worthington BB, Stones, Bass (H)
Church Inn	Ford Street	(Greenalls) <i>NO REAL ALE</i>
Crescent*	Crescent	(Free) Crescent Bitter and guest ales (H)
Crown Inn	Blackfriars Street	(Whitbread?) Chesters B, Boddies B, Marstons Pedigree (H)
Dick & Puppet	Encombe Place	(Free) <i>Opening Jan 1994. Hopefully.</i>
Eagle*	Collier Street	(Holts) M,B (H)
Egerton Arms	Gore Street	(John Smiths) B, Websters B (H)
Hyde Park Corner	Silk Street	(Holts) M,B (H)
Kings Arms*	Bloom Street	(BodPubCo) Holts B & guest ales (H)
Mark Addy	Stanley Street	(Free) Boddies B, Marstons Pedigree (H)
Old Ship	Chapel Street	(BodPubCo) Boddingtons M,B (H)
Oxford	Bexley Square	(Vaux) Vaux B, Samson (H)
Peel Park	Chapel Street	(John Smiths) B, Courage Directors (H)
Pen & Wig	New Bailey Street	(Grand Met) Wilsons M, Websters B, John Smiths B, Marstons Pedigree (H)
Punch Bowl	Chapel Street	(Tetley) Websters B, Robinsons BB (H)
Queen Victoria	Crown Street	(Tetley) Tetley B (H)
Rovers Return	Chapel Street	(Grand Met) John Smiths, Websters B (H)
Salford Arms	Chapel Street	(Whitbread) Boddies B, Holts B (H)
Squealing Pig	Peru Street	(Free) Boddies B, Trophy, Flowers Original (H)
Three Legs of Man	Greengate	(Robinsons) BM, B, BB (H)
Town Hall Tavern	Cleminson Street	(Whitbread) <i>CLOSED & BOARDED</i>
Ye Olde Nelson	Chapel Street	(Whitbread) Chesters M, Boddies B, Trophy (H)

Weaste & Irlams o'th'Height

Ashley Brook*	Liverpool Street	(Holts) M,B (H)
Britannia	Bank Lane, IOH	(Grand Met) Wilsons M, J Smiths B (H)
Coach & Horses	Eccles New Road	(Sam Smith) Old Brewery B (H)
Dog & Partridge	Bolton Road, IOH	(Bass) Stones, Bass (H)
Grey Mare	Eccles New Road	(Greenalls) Greenalls B (H)
Inn of Good Hope	Eccles Old Road	(Grand Met) Websters Green Label, Websters B, Ruddles County (H)
Langworthy	Langworthy Road	(Whitbread) <i>CLOSED - fire damaged</i>
Oakwood	Lancaster Road	(Whitbread) Boddingtons M,B (H)
Old Veteran	Eccles New Road	(Greenalls) M,B, Original, Stones (H)
Red Lion	Bolton Road, IOH	(Holts) M,B (E)

Royal	Eccles New Road	(Bass) NO REAL ALE
Stowell Spire	Eccles New Road	(Banks's) B (E) <i>Beware keg mild</i>
Swan	Eccles New Road	(Vaux) NO REAL ALE
Waggon & Horses	Bolton Road, IOH	(Holts) M,B (H)
Waverley	Eccles New Road	(Whitbread) Boddies (H)
Weaste	Tootal Drive	(Whitbread) Boddies (H)
Wellington	Bolton Road, IOH	(Holts) M,B (E)
White Horse	Gilda Brook Road	(Robinsons) BM, BB (E)

*** In particular...**

Ashley Brook

Modern pub (built 1990) but with an old-fashioned atmosphere. Holts first applied to build a pub in Seedley in 1924 but were opposed by a member of the clergy. In 1989, thanks to a Methodist minister, they got their way. A two-roomed local which is a much appreciated and enjoyed part of the community.

Braziers Arms

Pre-beerhouse era terraced public house in old part of Salford. Two small rooms and large, noisy lounge. Traditional welcoming local with good community spirit.

Crescent

Originally the Red Dragon, now the longest established free house in Salford. As well as ale-lovers from everywhere, it caters for a large student clientele during term times. The pub has three eclectically furnished rooms with a style of decor that can only be described as rustic.

Eagle

A pub worth seeking out. Its simplicity is both its charm and the reason for its continued popularity. There's nothing fancy here - it doesn't need frills. The modestly furnished vault and parlour are normally alive with the sound of friendly chat. An example of how pubs were and of how they should be.

Kings Arms

Rivalling the Crescent for choice, this one-time Groves & Whitnall house was the first "Cask Ale House" opened by BodPubCo. Its success was immediate and changed the fortunes of this back street pub. Popular meeting place for many societies, but loud music can pervade at times.

Star Inn

One of only three Robinsons pubs in Salford. Affectionately known as "One-armed Wally's" (Wally can still be seen serving), the Star has real character. It is a long, narrow pub with one small bar in the tiny vault. Meeting place for the oldest folk club in Salford. Unique to this pub are the inside gents', outside ladies' toilets and the electric diaphragm pumps.

Union Tavern

Basic, three-roomed local in industrial area of the city. Some internal alterations have opened the pub up a little and moonscape wallpaper is less than traditional, but the Union Tavern thrives.

Welcome

Built by Wilsons in the 1970s as the Chequerboard and then bought by Lees, who changed the name to the Welcome in memory of their famous old pub on Ordsall Lane. The licensees are Alan and Iris Johnson, who kept the original Welcome. A no-nonsense community pub with lounge, vault and function room and decorated with Harold Riley prints of old Salford.