

25p

What's Doing

JUNE 1994



The Manchester Beer Drinker's Monthly Magazine

Holts and Boddingtons pubs become listed buildings

Cooperation between CAMRA and English Heritage has resulted in three pubs in Eccles and another in Salford becoming listed buildings. They are the Lamb, the Royal Oak and the Grapes (all Edwardian Holts houses) and the Black Friar, a more modest edifice built for Boddingtons in 1886.

Twenty-five pubs in Greater Manchester and Lancashire were submitted for listing altogether and so far the campaigners have been successful with six. (The other two, the Railway in Altrincham and the Plough in Gorton, were listed last year.)

We are told that decisions on the remaining nineteen are expected to come in dribs and, er, drabs.



Licensing Hours and Excise Duty

As a consumer organisation, CAMRA must exhibit nous on topics of importance concerning beer and pubs. Few subjects can be more important than our licensing system and the taxation on beer. CAMRA must be in a position to respond to Government consultation. Informed opinion from the Region can assist CAMRA HQ to formulate such responses. Among the issues which we need to consider are:

- * Permitted Licensing Hours
- * Control of Hours
- * Criteria for varying hours
- * Complaints systems
- * Sunday Opening
- * Pub and Club Hours
- * Supper Licences
- * Entertainment Licences
- * Link with brewers to oppose excise duty
- * Effects of Tax
- * National and Regional price differentials

Both licensing and taxation will be discussed at a meeting of the Brewery Action Group on Tuesday 5th July at the Castle, Oldham Street, at 8.15pm. It is envisaged that the proposals drawn up at the meeting will be put to the next Regional Meeting as Regional Policy.

Lucky for some

The Horseshoe, one of two pubs on Back Hope Street, Broughton, is now serving guest beers alongside Worthington and Stones. Recent guests have included Robinsons, Samson, Speckled Hen and Spitfire. Dishevelled inebriates who've been chucked out of the Star opposite won't have too far to go for their pint of Robbies.

Independents' Pubs - the Guide - the Series

What's Doing is planning to produce a series of guides to independents' pubs in Greater Manchester, starting in July. The guides will cover the pubs of our own independent brewers - Hydes, Holts, Lees and Robinsons, together with those of more distant independents such as Vaux and Banks's. Free houses serving independents' beers will also be included.

Contributions are welcome. They may take the form of a review of the pubs of a particular area, such as Independent Brews in Newton Heath; write-ups on a particular brewer, such as Coach House Outlets in Manchester, or a description of a particular pub with details of opening times, beers served and facilities. It is hoped that the series of articles can be revised and compiled into a guide to the county.

Pub Dereliction League

We've already looked at Whitbread and Grand Met's records of losing pubs in Salford. What about Greenalls? I suppose you might say that they started it all when, as Groves & Whitnalls, they transferred the licence of Salford's oldest pub, the Bulls Head on Greengate, to the Racecourse Hotel in Littleton Road. That was in 1930. The old pub fell into disuse and in 1937 it was damaged by fire and subsequently knocked down. A familiar story? Only the time scale has changed. In 1977 Greenalls had 26 pubs in the old city of Salford. They now have 10. This is what's happened to the rest...

Bridge, Regent Rd	Demolished
Borough, Regent Rd	Demolished
Broughton Tavern, Blackfriars Rd	

Closed

Champion, Broadwalk	Demolished
GasTavern, Regent Rd	Demolished
Greyhound, Woden St	Demolished
Grove, Regent Rd	Demolished
Kings Arms, Bloom Street	

Sold. Free Trade. BodPubCo

Moonrakers, Phoebe Street

Demolished (St James's)

Papermakers, Clifden Place

Demolished

Poets Corner, Lower Broughton Rd

Demolished

Railway, Cross La

Demolished

Salisbury, Trafford Rd

Demolished

Star, Regent Road

Demolished

Station, Cross La

Demolished

Unicorn, Broughton Road

Sold. Free Trade



The Liner and the Brass Tally which were acquired after 1977 have also closed.

Not the best of records, but by no means as bad as Grand Met, who get the wooden spoon. Between them, Greenalls, Grand Met and Whitbread have managed to lose over 70 pubs in Salford in 17 years.

Planning News

An outfit called Lazi Leisure has applied for permission to convert the basement of 21-31 Oldham Street into a pub. That's the bit between Back Piccadilly and Church Street. Let's hope they sell real ale, unlike Merchants opposite, and don't have daft door policies like Dry Bar up the road.

Guests are
always welcome
at



ASHTON'S PREMIER
FREE HOUSE

With NINE beers on hand pumps
there are always interesting guest
beers - old favourites and also
rare and exotic brews. (BETWEEN-
8 and 12 different ales EACH WEEK.

MONDAY-
FOLK NIGHT

PLUS

LUNCHEONS TRY OUR HOT MEALS
& SUPER COLD BUFFET

Conservatory & Rooms

For Meetings & Parties

OPEN ALL DAY
- MONDAY TO FRIDAY

WARRINGTON ST
ASHTON-U-LYNE
NEXT TO
BY-PASS



Kings Ale

Leo King

There has been a big increase in the number of new micro-breweries (yes, them again - great!) and the following list comes from the books kindly loaned to me by the Marble Arch, the real ale free house on Rochdale Road, Manchester.

Aberystwyth Ales, Aberystwyth, Dyfed
Bishops Brewery, Borough Market,
London SE1

Carlford Hotel, Little Eccleston, Lancs
Chalke Hill Brewery, Norwich

Cottage Brewery, West Lydford,
Somerset

Elsecar Heritage Centre Brewery,
Elsecar, South Yorks

Fox & Newt, Leeds

Goddards Brewery, Ryde, Isle of Wight

Greenjack Brewery, Oulton Broad,
Lowestoft, Suffolk

Kings Head, Plymouth

Lucifer Brewing Co, Clifton, Bristol

Manod Arms, Blaneau Ffestiniog,
Gwynedd

Mansfield Arms, Alloa, Scotland

Mardle Hall Brewery, Norfolk

Munday Colours, Holbeton, Devon

New Ale Brewing Co, Andover, Hants

Oakhams Brewery, Oakham, Rutland
Old White Bear, Cross Hills, West
Yorks

Passageway Brewery, Widnes, Lancs

Reckless Eric (Skinners), Cilfynydd,
Glamorgan

Red Cross Brewery, Bromsgrove,
Worcs

Rother Valley Brewery, Tenterden,
Kent

Shardlow Brewery, Shardlow,
Derbyshire

Solstice Brewery, Kington,
Herefordshire

Stanway Superior Ales, Toddington,
Glos

Sutton Brewery, Coxside, Plymouth

Tomintoul Brewery, Ballincullough,
Scotland

Tomlinsons, Pontefract, Yorkshire
Tuckers Maltings, Newton Abbot,
Devon

Uddington Brewery, Strathclyde,
Scotland

Whim Ales, Hartington, Derbyshire

*New companies whose beer is
contract-brewed*

Castle, Ashby-de-la-Zouche, Leics -
brewed by Lloyds, Derby

High Peak, Derbyshire - brewed by
Lloyds, Derby

London Beer Co (Pitfield) - brewed by
Brewery-on-Sea, Lancing, W Sussex

Pennine - brewed by Commercial
(formerly Worth Brewery), Keighley,
West Yorks

Pioneer - brewed by Roosters,
Harrogate, West Yorks

Breweries which are now defunct

Jolly Roger, Hereford. The ex-brewpub
is now called the Victory and is owned
by Wye Valley

Mundane Ales - ceased brewing early
1994

Trough Brewery - brewer now uses
Commercial's plant for the new
Pennine Brewery (qv)

Breweries which have been renamed

Dunn Ploughman - renamed Solstice

(qv). Soon moving to Andover, Hants

Forbes - reopened as Greenjack (qv)

Hedgehog & Hogshead - brews for the

free trade under the name Belchers

Island Brewery (IOW) - now known
officially as Burts

More micros: breweries which are expected to be in business soon
Abergele Brewery, Abergele, North Wales

Beards of Sussex - a former regional brewery in the East Sussex county town of Lewes - may install brewing equipment in one of their pubs
Britannia, Upper Gornal, West Midlands

Eagle & Child, Hoscote, Wigan
Grand Junction Brewery, Crewe.
Planned Rising Sun (Stoke on Trent) spin-off

Ice House, Mildenhall, Suffolk
Little Mutton Monster, Devonport, Plymouth
Mill Hotel, Chester
Paines (Wholesale), St Neots, Cambridgeshire. Paines is a former regional brewery
Red Wharf, Anglesey, North Wales
St George, Eccleshall, Staffs
St Helier, Jersey, Channel Islands
Teignworthy Brewery, Newton Abbot, Devon
Two Bridges Hotel, Princetown, Devon

Marble Arch

Manchester's famous free house is now in the hands of enthusiastic new managers John and Jane O'Shea. The pub usually closes on bank holidays but on Monday 30th May it will be open all day for a special occasion - a charity barbecue in aid of Broughton House Ex-Servicemen's Home. There will be food and live music, a bottle auction, other events and plenty of real ale.

It is intended that regular charity events will take place at the Marble Arch and under the new management bar meals will be available and there is a possibility of live music in the future.

Kendlegate Wine Cellars Ltd

164 Northgate Rd, Edgeley. Tel: 477 3939

**Cask beer to order from over 60 breweries
Increasing, ever changing range of bottled beers**

TASTINGS: 1st Saturday of the month 12.00-3.00pm
June 4th - Pilsner style July 2nd - Tasting Competition
No tastings August or September - recommence October
SPECIAL OFFERS AVAILABLE AT THESE TASTINGS!

**Note: We operate under Wholesale Licensing Regulations, therefore
minimum purchase is 24 bottles beer or 12 bottles wines/spirits,
which can all be different**

OPEN 10am-5pm MONDAY-FRIDAY
(Closed weekends and bank holidays)
Telephone orders accepted on a COD basis

Grey Horse and Circus

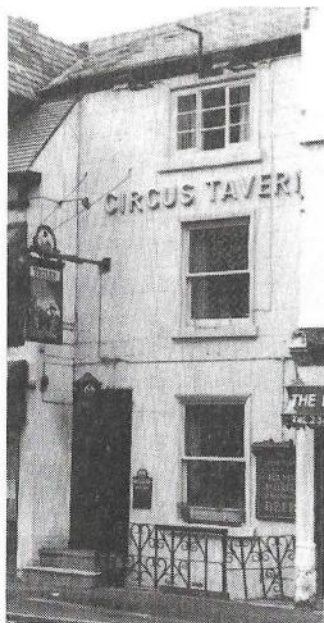
Jean Goldie left the Grey Horse on Portland Street at the end of April, having been there some ten years longer than she had planned. Jean came to the pub in March 1980 for what she thought would be, at best, a four-year stint. At the time the pub was threatened by a road scheme or the like and it was believed it would be demolished by 1984. Happily this was not the case.

The Grey Horse is Hydes' only pub in the heart of the city and is indeed a good advertisement for that brewery. Under Jean's stewardship it retained a splendidly "pubby" atmosphere, attracting, as all the best pubs do, a wide range of customers. Jean is now enjoying her well-earned retirement on the Fylde coast. We wish her well.

The Circus Tavern, a few doors along from the Grey Horse, is featured in a recently published English Heritage booklet because the original fittings have survived, and that's a rarity in an urban pub these days. When Tetleys, the owners, read their copy of the booklet they decided to do something about it and as a result the Circus will be officially recognised as a "Tetley Heritage" pub in June.

The properties which became the Circus and the Grey Horse were originally part of a terrace of thirteen houses built between Nicholas Street and Princess Street well over two hundred years ago. The houses were built when Portland Street was first developed on what was then the edge of the town and the early residents would have had views across gently sloping fields down to Garratt Hall and the River Medlock, where swans glided... *(Yes, yes, we get the picture.)* Anyway, things were changing fast in Manchester and by the early nineteenth century the terrace contained a mixture of private residents and shopkeepers.

With commercial and industrial development going on all around, most of the thirteen houses became business premises and the first to be licensed was No.92 on the Princess Street corner, which became a beerhouse (later called the Queens Arms) in the early 1830s. In all, no fewer than seven of the thirteen properties had licences to sell beer at one time or another.



By the early 1840s the Bee Hive (No.74 - the building is still there) was in business and by 1850 the Grey Horse (No.80), the Circus (No.86) and the shop next door (No.88) had beer licences. A few years earlier the house which became the Circus was the home of a butcher who had a shop near Bridge Street; an undertaker lived at the house which became the Grey Horse. By the 1860s Nos.70 and 76 were beerhouses, the latter being the original Old Monkey.

Numbers 68, 70 and 72 were pulled down to make room for the large building on the corner of Nicholas Street and over the years the surviving ten houses were modified or partly rebuilt. Originally they all had stairwells to cellars at the front; those on either side of the Circus were covered over when new frontages were built, which is why the Circus appears to be set back. No.82, next to the Grey Horse, was completely rebuilt, but there were no significant changes until 1993, when Holts demolished Nos. 90 and 92 (the old Queens Arms) to build their new Old Monkey.

The Queens and the original Old Monkey closed in 1925 and the Bee Hive in 1937, but two of these buildings remain, along with three other shops and, of course, the Circus and the Grey Horse.

Most of the Victorian warehouses which dominated Portland Street for over a century have gone, but the old houses between Nicholas Street and Princess Street are reminders of an earlier age, when there were gardens laid out along the banks of the Medlock at Granby Row and... *(I hope you are not going to mention the swans again.)* OK.



Letters

Idy Hi

Sir - May I correct some details concerning my career in the trade, as detailed in the article about the Beer House last month. I held the licence for the Swan Inn, Liverpool, from 1983 until 1988 and the pub entered the Good Beer Guide in 1984. After one year out I returned as licensee (not as a demoted assistant manager!) in 1989. A year later I was offered the position as licensee of Liverpool's first brew-pub - the Black Horse & Rainbow - where I worked until June 1991. Following this I held the licence of the Cumberland Tavern, a real ale pub in Liverpool city centre, until September 1993.

Idy Phillips

Futile Excise

Sir - I can quite see the point of trying to reduce excise duty on beer. The cheaper the better. But do we have to jump into bed with the brewers to do it? Excise duty on a pint of bitter is about 25p. There's more difference between a pint of Holts and, say, a pint of Boddies than the entire duty. And brewers over here are as guilty as the Transit-to-Calais brigade of flogging off beer at cheapo to the supermarkets. Come on brewers, get your own act together. Reduce your prices in the pubs, stop selling to supermarkets at the margin and your campaign might have some credibility. Then we'll make common cause with Whitbread.

Jean-Paul Baguette-Blanche

More Gricing

Sir - Has 5674 (May WD - Gricers' Corner) nothing better to do than swot up on his Ian Allan spotters' books and CAMRA pub guides, looking for connections? Several Saints carried names of novels by Scott, for example:

2902 Lady of the Lake

2987 Bride of Lammermoor

Does he want us to go out and name a couple of pubs after them? Mind you, the Saints carried about the only tolerable names on the GWR. The rest seemed to be named after highly immobile objects like castles. Oh aye, and some were named after kings - a sad design with daft names.

A H Peppercorn

Spanking New Union

The New Union is set to become even newer. Listed Building Consent has been sought for a two-storey extension at the rear to form an enlarged lounge, service area and kitchen with a residents' lounge and bedrooms above.



34 Drake Street, Rochdale

1st BIRTHDAY BEER FESTIVAL

Fri 10th June 12 noon-11.00pm

Sat 11th June 12 noon-11.00pm

Sun 12th June 12 noon-3.00pm, 7.00pm-10.30pm

**OVER 30 ALES, CIDERS and
PERRIES from around the
country**

TAP & SPILE

34 Drake Street, Rochdale

Tel. 0706 869812 - ask for Mark

Real Ale in Flixton

Stuart Fish

Trafford has been described as the most boring district in Britain for guest beers. Although there was some truth in this statement at one time, things have now improved. Over the next few months I will be describing the pubs in the Trafford area and the beers available, starting at the Flixton end of the borough.

The October and November 1991 issues of WD reported the appearance of Coachmans bitter at the **Church** at the end of Church Road in Flixton. The beer is still there along with well-kept Tetley-Walker-brewed Greenalls bitter, mild and Original on handpumps. The pub is a comfortable village-style local with a number of separate drinking areas, one with a dartboard, and returned to the real ale fold in mid-1991. Good value lunches are served Monday to Friday.

Next door to the Church is the **Greyhound**, a typical Whitbread "Beefeater" establishment with the emphasis on the usual range of steaks. The ubiquitous Boddingtons bitter is the only regular beer, but others from Whitbread's "guest" range, such as Pedigree and Flowers Original, have been reported. Across the green on Flixton Road, the former Flixton Station has been converted into the **Station** pub after a short existence as a "Henry's Table". The restaurant part is no more but bar snacks are available at lunchtime. Boddingtons bitter has been joined by changing guest beers which have included Cains bitter, Morland Old Speckled Hen, Jennings Snecklifter, Brains SA and Theakstons XB. Beware the doormen at weekends, when the pub can be very crowded.

Moving down Irlam Road, we come to Samuel Smith's **Railway Tavern**,



which changed over to traditional beer last summer. Handpumps were installed to dispense Old Brewery Bitter at a modest £1.11 a pint and there is a possibility of Museum Ale appearing. It was always a mystery why, in this otherwise fairly reasonable local, Sam Smiths persisted with the keg stuff for so long when nearly all their other pubs sell traditional beer.

Just along Irlam Road from the Railway at Woodsend Circle, Chef & Brewer's **Red Lion** is currently offering the dreaded Websters Eurobland bitter alongside the more interesting Directors. How long the Courage beers will last following the sale of Chef & Brewer to Scottish & Newcastle is anyone's guess. Another Chef & Brewer pub, the smarter **Fox & Hounds** on Woodsend Road, has the reliable John Smiths bitter in addition to the two beers offered by the Red Lion. Perhaps some of these Chef & Brewer pubs, of which Trafford as a whole has seventeen, will be released either partly or fully from the tie and a better selection of beer installed.

Opposite Park Hospital (recently renamed Trafford General) the **Garricks Head** is a huge Chef & Brewer outlet with a reputation as a kids' pub and only one beer, the disappointing Websters bitter.

Back on Flixton Road, the **Bird i'th'Hand** is a big Greenalls pub which was another real ale conversion last year. The pub was redecorated just before Christmas and reopened with a slightly altered name. Prior to closing, Greenalls bitter and mild on handpumps plus a third beer had been on sale. At first Stones bitter was offered, followed by Tetley bitter and surprisingly, from London, Youngs "Ordinary" bitter. Unfortunately the Youngs was not a success, probably because it was priced at 10p a pint more than the Greenalls, and was subsequently taken off. Tetley bitter has reappeared along with Greenalls original.



The last, but in no sense least, pub in Flixton is Joseph Holt's **Roebuck** on the corner of Church Road and Chassen Road, just inside the parish boundary with Urmston. It was completely altered in 1991, when there were rumours that the pub would become the second so-called "Joseph's Table", similar to the Cheadle Hulme. It

transpired that the vault was retained in part, the big room was made bigger and an odd area was created in front of the bar, which can become very congested at busy times. The Roebuck was turned into an even more popular pub than before, with many regulars struggling to get in on Friday and Saturday nights. Holts bitter and mild are now on handpumps and food is served at lunchtimes. The upstairs room is available for hire and recently the Holts AGM has been held there in succession to the Melville. So all nine pubs in the Flixton area serve real beer, twelve brews being regularly available in addition to guest beers.

Independents' Day Treasure Hunt

Yes, it's here again. That brain-teaser and piss-up all combined.

What?

A Treasure Hunt round pubs in Manchester.

When's that?

Saturday, July 2nd.

Where?

Starting off at the Beer House at 12 noon and finishing around 8.00pm.

That's a long time, isn't it?

Yes, but you'll have a lot of problems to solve, a lot of clues to find and a few pints to sup.

Anyway, you can go for a curry in between or go shopping if you want.

So, do I come by myself?

Can you rephrase that?

Do I enter as an individual?

Never mind. No, form a team of two or three or four.

What does it cost?

£2 per team.

So there's a prize then?

Yes, a gallon of beer kindly donated by the Beer House and a tatty trophy donated by the organising CAMRA branch.

So what's this Independents' Day?

Well, it's almost American Independence Day and we're going to be supping beer from independent breweries - geddit?

Yes - do I need to book?

No, just turn up at the Beer House before 1.00pm on 2nd July - the organisers will be upstairs.

Whitbread News

The Canary on Plodder Lane, Farnworth, is now a Whitbread "Beer Engine" and is selling six handpulled real ales - Boddies bitter, Trophy and four changing guest beers. However, they haven't got it quite right yet. The management is advertising a competition whereby customers win a prize if they consume a pint of each beer and also a pint of Scrumpy Jack, the keg cider which is sold through fake handpumps!

The Bulls Head in Walkden closed for two weeks on 9th May so that it could be converted into a "Cask Ale House".



FREE

LEGAL HELP

NO WIN NO FEE

PERSONAL INJURY

- AT WORK
- MOTORING
- PEDESTRIAN

EMPLOYMENT DISPUTE

- DISCRIMINATION
- UNFAIR DISMISSAL
- REDUNDANCY

WHY PAY UNNECESSARY FEES !
for **FREE** immediate case assessment

RING THE LEGAL RESPONSE LINE

061 929 1039

for an informal and confidential discussion

**THE U.K.
LEGAL RESPONSE
GROUP** Ref WD

**MILLER HOUSE, 19 MARKET STREET,
ALTRINCHAM, CHESHIRE WA14 1QS.**

Fishermans Retreat, Shuttleworth

As the name suggests, you can fish here, and you can certainly get away from it all at this idyllic retreat on the moors near Ramsbottom. This new real ale outlet was established a couple of years ago by the enterprising Magnall family at Twine Valley, Shuttleworth.

There's a trout fishery, excellent food served all day and panoramic moorland views, but most importantly there are well kept real ales. From the early days, Ruddles Best (£1.30) and County (£1.40) have been available, but it's the guest beers which tempt one up there regularly. These are ever-changing and there are generally two, if not more. Recent guests have included beers from the Dent Brewery, Wychwood Dr Thirsty's, Morland Old Speckled Hen and Cains bitter: usually all guests are priced at £1.50.

The place is great for a family day out, as the kids can feed the fish, and there are plans for a small menagerie. It's a popular stopping-off place for hikers, too. Although remote, the Fishermans Retreat is only half a mile or so from the main road through Shuttleworth, the A56. Look out for Bye Road and a pavement noticeboard, then just follow the signs.

Holts in the rest of the world

In April we printed a list of local "free trade" outlets supplied by Holts Brewery. Devotees of the Derby Brewery Drinking Experience who are planning their late summer holidays will be interested to learn that Holts beers are being distributed to the nether regions by brewers' agent Max Taylor. Forty-odd outlets in such exotic locations as the Lake District, Edinburgh, Southport, Huddersfield and Bradford are on his list. Max has supplied Holts BLO Stewart Revell with some names...

Scotland

Edinburgh: Drew Nichols Bar,
Cumberland Bar
Leith: Malt & Hops
North Berwick: Dalrymple Arms
Glasgow: Blackfriars, Brewery Tap
Kirkcaldy: Betty Nichols Bar
Linlithgow: Four Marys
Musselburgh: Staggs (Volunteers)

England

Liverpool: Ship & Mitre, United Powers,
Swan, Royal George
Southport: Berkeley Hotel
Croston: Black Horse
Preston: Gastons
Cleveleys: Royal Hotel
Kendal: Burgundy's
Lakes: Old Dungeon Ghyll Inn,
Great Langdale
Newcastle: Cooperage, Alumdale Inn

South Shields: Dolly Peel
Huddersfield: Rat & Ratchet
Halifax: Pump Room
Keighley: Red Pig
Bradford: Corn Dolly
Pool-in-Wharfedale: Hunters
Leeds: Cock of the North, Beer
Emporium, Duck & Drake
Wakefield: Beer Engine
Sheffield: Cask & Cutler, Fat Cat
Chesterfield: Derby Tup
Derby: Brunswick, Alex, Flower Pot,
Crompton Tavern

A note from our financial editor: The usual Holts prices do not apply and the poor souls who live in some of these faraway places are accustomed to paying well over the odds for their imported ale.

Brook House Tavern

The Brook House Recreation Centre in the middle of the Brook House Estate is now a pub. The Recreation Centre was losing money and would have been closed (albeit reluctantly) by the council but for the efforts of two local entrepreneurs.

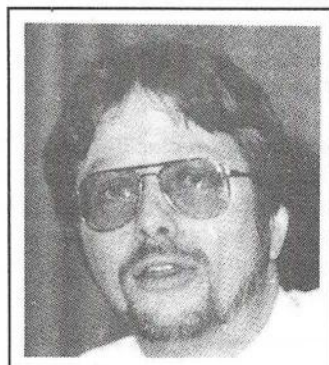
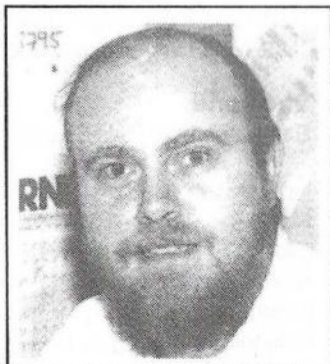
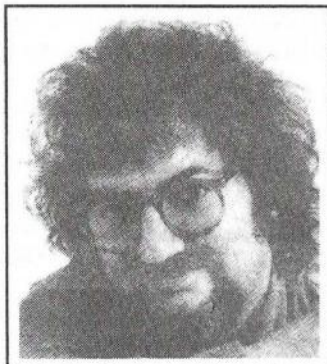
The Brook House Tavern is a joint venture between the landlords of the Chestnut Lodge and the Church. Consequently the beers at present are Websters bitter and John Smiths bitter (both at £1.15 a pint), but there are plans for more interesting guest beers in the future. Opening hours are all day Monday, Friday and Saturday, 5.30pm-11.00pm on the other weekdays and 12.00-3.00pm, 7.00pm-10.30pm Sunday.

What's Doing Competition! Valuable Prizes!

First Prize - Two tickets for Saturday at the Great British Beer Festival.

Second Prize - Two tickets for Saturday at the Great British Beer Festival. Plus Two season tickets (Tues-Sat) at the GBBF.

All you have to do is tell us which of these people is Chris Cryne, the organiser of the Great British Beer Festival.



Use your skill and judgment to complete the following in not more than 2,000 words:
"Chris Cryne is blonde, petite and ..."



Entries to the Editor by 20th June.

Chris Cryne's grandma, that bloke with the silly beard and suchlike can't enter.

The Great British Beer Festival

Grand Hall, Olympia, London



The Great British Beer Festival

2nd-6th August 1994

Tues-Thur 5pm-10.30pm: £3

Wed-Fri 11.30am-3pm: £1

Fri 5pm-10.30pm: £3.50

Sat 11.30am-10pm: £3

This year's Great British Beer Festival will boast the biggest selection of draught beers under one roof in the world. There will be nearly 500 different real ales, imported beers, ciders and perries. Live music will be provided at each session, ranging from classical music on Wednesday to jazz with Eric Delaney on Saturday evening. A family room with children's entertainment will be open at lunchtimes and the festival will include craft stands, games and food. Groups of 15 or over can get a discount on the admission prices by contacting A Bridle on 0272 248894.

Broadheath Beer

The Railway in Broadheath, a long-standing Good Beer Guide entry, has a new licensee. Mel Blackey took over when the previous tenants retired after many years at the pub and he has reintroduced Boddingtons mild. The beer is selling well after an absence of some thirteen years and there is now a guest beer each week as well. The Railway is a cosy pub which became a listed building last year, thanks to CAMRA. There is competition a couple of doors away in the form of a much larger BodPubCo outlet and both pubs are in an area due for extensive redevelopment. The success of the Railway shows that CAMRA's campaigning on pub preservation can work, especially when there is a cooperative pub group or brewery.

Rupert

Well, there one is then! The glory of high office has once again eluded Nora Tackler. It is significant that her electoral defeat was in no way due to the scurrilous handbill which I have seen which casts doubts on her integrity. It is fortunate that those who were to have distributed this opprobrious document at the beanfeast in Cliffinnslide had qualms of conscience or cowardice and refused to broadcast the calumnies. I would not, however, go so far as to agree with Fiona, who said, "It is somehow satisfying to see someone fail on their own merits. There can be no question of shifting the blame or rationalising one's defeat." I wish Nora luck.

With the progress she is making on her self-improvement course, she may well have worn down resistance by the end of the millenium and attained high office before senility sets in.

What's this come bumping on my doormat? It's a new Members Handbook (with no apostrophe). It's reminiscent of What's Doing in the old days before Mr Nestfeather squandered his fortune on Billy Whizz desk-top publishing with squeaky-clean fonts. The blurred



print and cockeyed collation bring back fond memories of the John Bull kit and the kitchen table. So much more cosy and user-friendly, as computer buffs would say. So what's in it? Lots of useful information. But what's this? An invite to a meeting weeks ago. Did Tubs Caries print this? Opening Tripe is described as popular. How would they know, when it's given away? Perhaps they meant

"populist" or "populous", which my dictionary says means "thickly inhabited". Then there's a photo of Hattie with a pair of drawers, most appealing! But what's this I see - a Rupert quiz. How dare they! A series of photographs of what look like serial killers, child molesters, gormless

pratts and cerebrally challenged social misfits and a stubborn donkey is juxtaposed with a series of questions which suggest that the people about whom I write are fictitious or at the best thinly disguised parodies of real life people. I only hope that Jamie Frotter, Billy Bog, Hass Brickie and Rumpleshirtscream will come along with me, bringing their copy of this tawdry rag to stick it up the jaxi of whoever printed it. Neither I nor my friends will sit back and be made mock of in this manner.

Branch Diary

Bolton

Thur 2 Jun, Branch Meeting, Malt & Hops, Bradshawgate, 8.30pm

Sat 18 Jun, Social & Crawl. Meet Toll Bar, Horwich, noon. 12.30pm Crown; 12.50 Queens Head; 1.30pm Bowling Green; 2.15pm Bridge Inn; 2.50pm Black Bull

Thur 7 Jul, Branch Meeting, Derby Arms, Derby Street, 8.30pm

Contact: Judith Spragg 0204 595342 (h), 0204 397350 (w)

North Manchester

Wed 1 June, Winton Crawl: Brown Cow, Worsley Road, 7pm; Egerton Arms, Parrin Lane, 8pm; Ellesmere, King William Street, 9pm

Wed 8 June, Regional Meeting: Kings Arms, Helmshore Walk, Chorlton-on-Medlock, 8pm

Wed 15 June, Special General Meeting/Branch Meeting, Beer House, Angel Street, Manchester, 8pm/8.15pm

Wed 22 June, Irlam & Cadishead Crawl: Coach & Horses 7.30pm; George 8.30pm; Red Rose 9.30pm (all on Liverpool Road)

Wed 29 June, New Members' Social in Eccles: Lamb, Regent Street, 8pm; Albert Edward, Church Street, 9pm; Crown & Volunteer, Church Street, 10pm

Contact: Roger Hall 740 7937

Rochdale, Oldham & Bury

Tues 7 June 8pm, Branch Meeting, Waggon Inn, Butterworth Hall, Milnrow

Wed 15 June 8.30pm, Bury Beer Festival Organising Meeting, Napier, Bolton Street, Bury

Sat 18 June, Coach Trip to Snowdonia Brewery, Gwynedd. Ring contact for availability of places

Tues 21 June 8pm, Committee Meeting, Royal Oak, Th'Heights, Delph

Tues 28 June 8pm, What's Doing Collation, Flying Horse, Town Hall Square, Rochdale

Sat 2 July 11am, Independents Day Celebration. Meet J W Lees Brewery, then Indies Coach Tour

Contact: Peter Alexander 0532 324023 (w), 061 655 4002 (h)

Brazil Nuthouse?

Permission is being sought to convert the basement of Amazon House, a warehouse on Brazil Street, into a café bar. The application includes the construction of a footbridge over the Rochdale Canal to Canal Street. No doubt for added realism they'll fill the canal with piranhas and crocodiles or have topless single-breasted women serving the grub.

Contributors to this issue: Stewart Revell, Roger Hall, Mark McConachie, Mike Robinson, Roger Wood, Leo King, Peter Barnes, Stuart Fish, B Lee, D Busman, Peter Wadsworth

THE QUEENS ARMS

FREE HOUSE

4/6 Honey Street (off Red Bank), Manchester

Tel.061 834 4239



Serving a large range of
traditional ales supporting
the independent breweries,
including



THEAKSTONS & TIMOTHY TAYLORS

Mild, Bitter, XB, Old Peculier,

Taylor's Best Bitter and Landlord

and weekly guest beers from around the country

WESTON'S TRADITIONAL CIDER ON HANDPUMP

*A selection of Continental
bottled beers also available*

Opening Hours

Sun: 12.00-3.00, 7.00-10.30

Mon: 12.00-4.00, 7.00-11.00

Tues: 12.00-4.00, 7.00-11.00

Wed: 12.00-4.00, 7.00-11.00

Thur: 12.00-11.00

Fri: 12.00-11.00

Sat: 12.00-4.00, 7.00-11.00

Free

A large and varied selection of
board games always available.

**We're in the Good Beer Guide
and CAMRA's Good Food Guide**

*Your hosts,
Dave & Jo*

