

25p

What's Doing

OCTOBER 1996



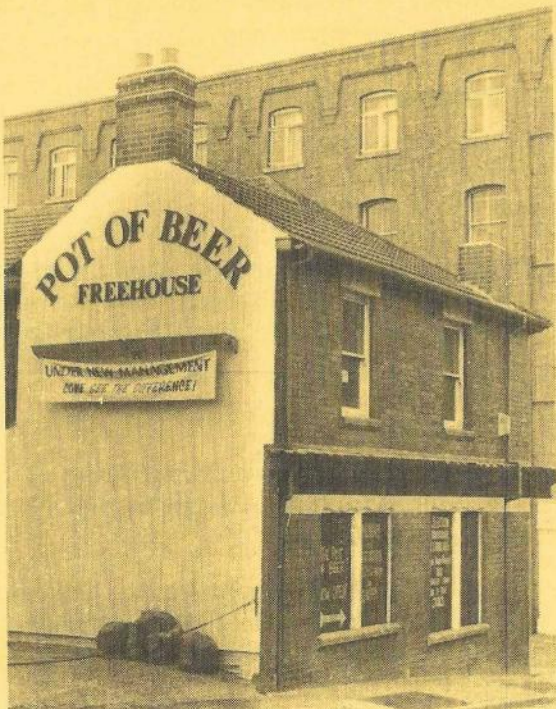
The Manchester Beer Drinker's Monthly Magazine

THUMBS UP!

The Harp & Shamrock on New Mount Street, Manchester, has reopened as the Pot of Beer. The former Marstons outlet is now one of two pubs owned by Ward Taverns of Ashton-u-Lyne (their other is Williams in A-u-L).

The inside of the pub has been thoroughly re-worked and there has been some necessary strengthening of the floor joists in places. If you knew the old 'Thumbs Up', as it was called, you will still recognise the two-room layout, but now it is all bare boards, bare brick, washed walls and pine wainscoting.

Some inside windows have been bricked-up, whilst most original glass remains. The Marstons beer range has been replaced by four beers on the bar, including Boddies and Hatters dark mild. A further three beers are on gravity on the bar back - these have included Old Speckled Hen and beers from



Wilds. With the gravity beers, all you can see of the casks is their ends and taps. Prices range from about 136p upwards. The man in charge, David Cooper, has some pedigree in that he did a fair stint at the nearby Marble Arch.

All in all, well worth a visit.

Call for a Porter at the Railway

The Mayor of Stockport did the honours at the official opening of the Railway, Great Portwood Street, on 12th September. The pub is the third outlet of David Porter's Porter Brewing Company of Rossendale and the full range of beers was available, plus a special Ginger Beer.

The pub has been extensively redecorated and generally smartened up and is much changed from its former 'Byron's' guise (see WD Sept). There's a traditional atmosphere and, true to form, there are no video games or loud music. The beer prices are very competitive, with mild at £1.05, bitter £1.10, Rossendale Ale £1.20, Porter £1.40 and Sunshine £1.45. It is intended to offer lunchtime meals in the near future.

The Railway is run by Paul and Bev Stanyer, who previously ran another Porter pub, the Albion at Clayton-le-Moors. The beers were in excellent condition at the opening do and will undoubtedly continue to be so, based on past performance.

Finnegan's Wake

That's the new name for the Brunswick on Piccadilly, Manchester. Just when we thought the Irish theme had run its course, Innentrepreneur come up with another one.

There is an 'alehouse'-type interior, with bare boards, discrete furniture and nothing overtly Irish apart from the wallpaper, which is composed of Irish posters and newspapers. The cask beers are Theakstons BB (£1.55 a pint!) and XB.

New bars

D Hughes (who he?) wants to convert 41 Bloom Street into a café bar. The Exchange Pub Co wants to alter 55 Mosley Street so it, too, can become a café bar.

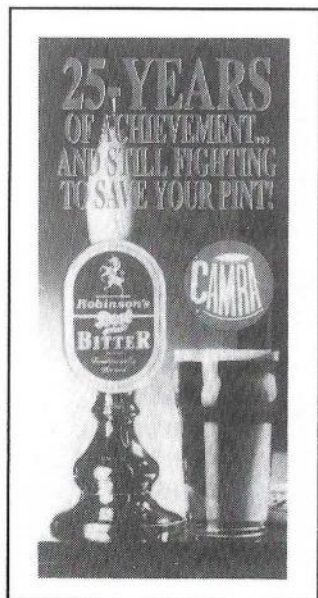
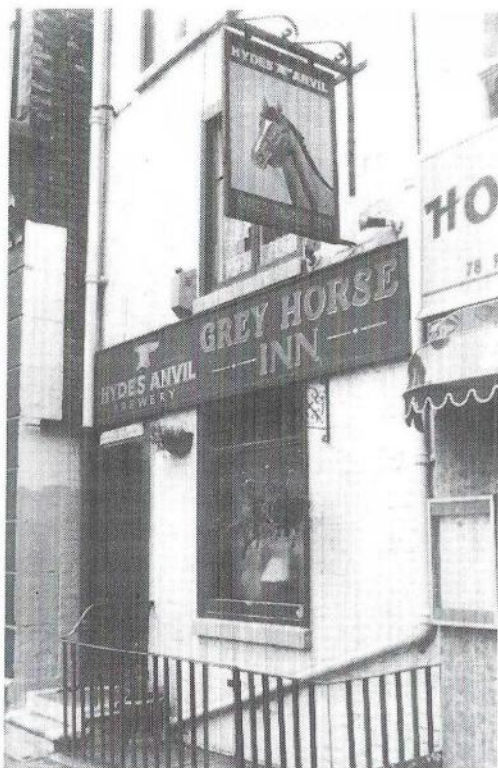
Plans have been submitted to turn the first floor of the former Congregational Church at 244 Deansgate (near Quay Street) into a bar and function room. Meanwhile, up near Kendals, H R Fletchers is to revert to a café bar.

Grey Horse

A new licensee took over at the Grey Horse on Portland Street in Manchester at the end of August. The green interior is no more, which is an improvement, and the pub has been redecorated in more conventional white - much less stressful on the eyes! The beer quality has also improved and the Grey Horse sells a very pleasant pint of Hydres bitter at £1.35.

Another major change is that the pub now opens all day seven days a week. Previously it opened only Monday-Saturday lunchtimes and evenings and stayed shut on Sundays.

The Grey Horse has always been a place of tranquillity



away from the din of jukeboxes and karaoke of other central Manchester pubs, so it's nice to see it on the way up once more.

Robbies promo

Robinsons of Stockport, who have 400 pubs in the North West, have launched a CAMRA membership promotion.

During September (better hurry...) pick up a leaflet in one of their pubs, join CAMRA and you will receive a Robinsons pub guide and a pint of Robbies at the 1971 price.

Some of the brewery's pubs in Lancashire and Cheshire will also be having promotional evenings, so keep your eyes open.

Guests are
always welcome



ASHTON'S PREMIER
FREE HOUSE

With NINE beers on hand pumps
there are always interesting guest
beers - old favourites and also
rare and exotic brews. (BETWEEN-
8 and 12 different ales EACH WEEK.

MONDAY-
FOLK NIGHT

PLUS

LUNCHEONS TRY OUR HOT MEALS
& SUPER COLD BUFFET

Conservatory & Rooms

For Meetings & Parties

OPEN ALL DAY
- MONDAY TO FRIDAY

WARRINGTON ST
ASHTON-U-LYNE
NEXT TO
BY-PASS



Queens reopens

The Queens Arms in Patricroft reopened on 12th September. Although one might quibble about some of the details, the overall effect of the refurbishment is pleasing. The garden wall has been altered so that you now enter the pub from the car park. The bay window has been refitted with obscure glass bearing the name 'snug'. A serving hatch/window has been fitted to the rear of the bar and the corridor wall removed. The window between the two rear rooms has been extended downwards to form a walk-through opening. Nonetheless, the Queens retains its feeling of separate spaces and the much needed redecoration and re-upholstering has removed many of the tatty features to make the pub more comfortable.

Most of the pictures and photographs have some historical significance to the pub and the area, many drawing on Nasmyth's next door and the railway connection. The excellent bar front in the vault has been retained but there seems to be an excess of obscure glass near the vault entrance. On the first Friday after opening, the pub was busy and comments from customers were favourable.

The process of consultation which was necessary because of the Queens' listed status has resulted in a transformation which should satisfy both customers and owners. The excesses planned by the brewery have been toned down and the result is a pub which retains its different rooms and its links with the past whilst, at the same time, providing a more comfortable environment and a more commercially viable business.

Here, the damaging effects of internal demolition have been avoided. Sadly, the same cannot be said for the Red Lion over the tracks, where the removal of an internal wall has changed the character of the pub for the worse.



Classic Pubs

R Critchey

The Rochdale, Oldham & Bury branch of CAMRA recently travelled to rural South Lancashire and Merseyside to visit some of the classic pubs in that area. First stop was the Scotch Piper in Lydiate, 'the oldest pub in Lancashire'.



It's a fine olde worlde thatched building, but the beer did not live up to expectations.

From there we went to the Dog & Gun in Aughton, an unspoilt, multi-room pub, and then on to the Ship Inn at Lathom. This canalside pub had a range of beers including Valiant and Bombardier in good condition. The extensive menu made the Ship the natural lunch stop.

The Railway Tavern in Hoscar served Walkers Best Bitter, possibly the best beer of the day, and we enjoyed this in the garden, until the rain came. By the time we reached the Farmers Arms in Heskin Green the rain had stopped, so we city folks were able to stay outside and enjoy watching the farmyard animals.

From there we went to the Black Bull in Mawdesley and finished off at the Eagle & Child, Bispham Green, where the range included Amber Rambler and Lakeland Gold. The skies finally opened up as we left, but the weather wasn't able to put a damper on a great day out.

WHAT'S DOING contributions should be sent to the editor c/o 88 Ringley Road, Stoneclough, Radcliffe, Manchester M26 1ET. News and letters must arrive by the 20th of the month for inclusion in the next month's issue.

WHAT'S DOING ADVERTISING: Full page £50 or £200 for six months, half page £35 or £150 for six months, quarter page £25 or £100 for six months. All adverts must be accompanied with payment. Cheque payable to What's Doing.

SUBSCRIPTIONS: Send cheque/PO for £2.70 together with your name and address to Roger Hall, 123 Hill Lane, Blackley, Manchester M9 6PW, for six issues. Cheques made out to "What's Doing".

BACK NUMBERS: 15p per copy. Send stamped addressed envelope to Roger Hall, 123 Hill Lane, Blackley, Manchester M9 6PW.

To join CAMRA send £12 to Membership, CAMRA, 230 Hatfield Road, St Albans, Herts AL1 4LW.

Anvil Tales

Keith Egerton

New Hydes Anvil Brewery drays, complete with new company slogans on the side, should now be in service. Watch out for them delivering round the company's estate.

It is Hydes' ambition to produce the best quality beers in Manchester and they are continuing to upgrade and improve brewery procedures and plant. The latest investment has been in high-tech fermentation controllers to ensure consistency of brew. Their efforts were recognised by the Greater Manchester CAMRA branches' quality award in September.

Following the departure of the tenant of the Albert in Didsbury to Marstons' Royal Oak, the Albert is now a managed house under Ken and Lynn Mallion and the first change has been a reduction of prices!



Over at the Grey Horse, new tenant Lil Duffy has been busily redecorating the inside. Customers can now appreciate a less garish decor than of late and, it is hoped, enjoy a better quality of beer.

Holts briefly

Stewart Revell

Holts continue to monitor the three remaining tenanted pubs they acquired from Greenalls earlier this year - the Pack Horse on Ashton Old Road, Openshaw, the Railway at Moses Gate, near Bolton, and the Chapel House at Dukinfield. I hear the Pack Horse is doing very well. There is expected to be an announcement regarding one of the others soon, so watch this space.

The Volunteer at Darcy Lever, one of the ex-Greenalls pubs sold into the free trade (still selling Holts bitter) may be in for a major refurbishment soon.

Work is in full swing at the new outlet in John Dalton Street in the centre of Manchester.

COME TO THE ALL YEAR ROUND BEER FESTIVAL

THE BEER HOUSE

Angel Street, Manchester. 0161 839 7019

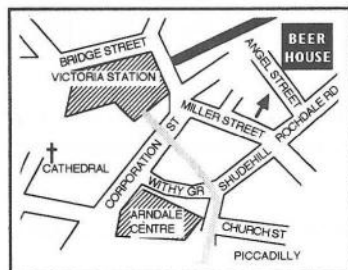
12 REAL ALES ON OFFER including
**BURTONWOOD BITTER, THEAKSTONS XB and
BEST BITTER, MOORHOUSES PENDLE WITCH
PLUS 8 EVER-CHANGING GUEST BEERS**
including a **GUEST MILD**
**PLUS A RANGE OF TRADITIONAL CIDERS,
DRAUGHT BELGIAN KRIEK, LEFFE BLONDE,
HOEGAARDEN & MANY BOTTLED BELGIAN
and other FOREIGN BEERS**



CEILIDH BAND
Saturday afternoon
October 5th
from 1.00pm

SOMETHING FOR EVEN THE MOST DISCERNING TASTE
Lunchtime food 7 days a week • Try our Sunday Breakfast 12 - 2.30
Evening Meals 5 - 7 Fri • Thurs 5 - 8 Choice of three curries (veg and
carnivore) + rice £2.50 • Half price menus Monday lunch

WE'RE
IN THE
GOOD
BEER
GUIDE
'96



OPEN ALL DAY MONDAY - SUNDAY
Bar Billiards & Darts
THREE TRADITIONAL CIDERS
ALWAYS AVAILABLE
GOOD FOOD - Vegetarians welcome
NOW TAKING CHRISTMAS
BOOKINGS FOR FREE PARTY ROOM

Closed & Boarded Corner

Only two pubs in the news this month. First, the 53 has reached its terminus - or rather the Appleford (ex-No.53), the former Whitbread on Queens Road, Cheetham. The boards are in place and the Caribbean food van has gone.



The second boarding-up appears to be temporary. Greenalls'

Beehive on Holland Street, Salford, is closed and for sale. If this were to stay closed it would be a sad loss for the area, as it was one of the better pubs in Charlestown.

The BEER HOUSE CHAMPIONS WEEKEND

Friday Oct 25th to Sunday Oct 27th

Try all the winners from GBBF 1996

plus

Uncle Igor is back!!

Now at 25.0 ABV

Open All Day Every Day

Letters

Guest Beers

Sir - Beinlos is right (WD Sept) - continental Europe produces a host of wonderful craft-brewed beers. But if the Beer Orders restrictions on guest beer rights were lifted, how many licensees does he really think would stock them in the face of routinely available deep discounts on mass-market dross from the major players?

He cites Theakstons and Taylors as examples of breweries whose product quality has been compromised by wider distribution. So can he really think it desirable that quality beers from Flanders or Franconia, previously 'only available in a handful of outlets', should be trucked not just across Britain but across half of Europe?

Rhys P Jones

Upright organ?

Sir - I have always regarded your organ as upholding the highest standards in British journalism - correct English (on the whole); good, clean content; items of local interest and so on. I was, however, quite appalled by your September edition, on the following grounds.

1) Patriotism! It should have been entitled Euro '96 (an international sports competition, I understand). There was more about the beers of Brussels, Antwerp and various parts of Germany than about the products of our own glorious nation.

2) Sex! We all know that the national press panders to the prurient, but should I really have to hide a local magazine about beer so that it does not offend my lady wife?

3) Language! WD readers are accustomed to Rupert's excesses and those of us who are educated enough to own dictionaries can just about manage "Choice is a chimera", but "a frot group"? Really!

Please mend your ways or I shall cancel my subscription.

Disgusted of Denton

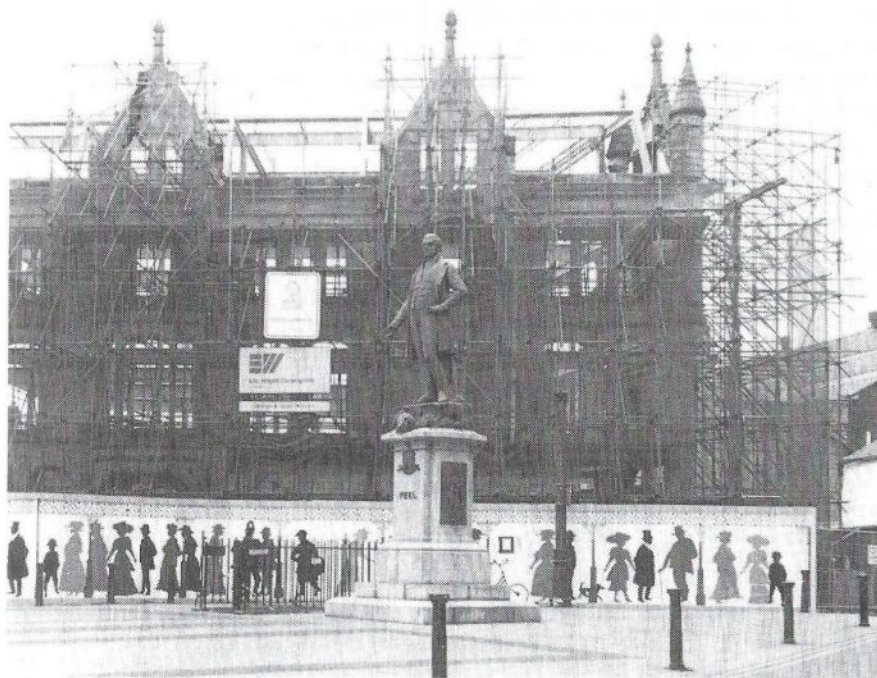
Miles O'Plattin

The Apollo on Varley Street now rejoices in the name of The Dubliner. A Greek god in Miles Platting did stick out like a sore thumb, but another Irish pub...?

Wetherspoons blitz

There's no news about their planning application in Bolton (WD Sept), but pub group Wetherspoons have announced that they want to open outlets in Bury, Didsbury, Eccles, Middleton, Northwich, Oldham, Rochdale, Whitefield, Sale and Wilmslow - all in the next eighteen months. They say the sites have been acquired and they have put in planning and licence applications.

Work on the Bury site is proceeding apace. The fancy frontage of the old tramway offices is propped up by scaffolding (*below*) and there's a very large hole at the back where the rest of the building used to be.



Pub of the Season

The Rochdale, Oldham & Bury branch of CAMRA are proud to announce that their choice for the Autumn Pub of the Season award is the Swan at Dobcross. The landlord has spent much time and effort in renovating the pub, and offers a good range of beers, Phoenix brews being prominent. The presentation of the award certificate will take place at the Swan on Wednesday 9th October at around 9.00pm. All are welcome to attend and meet branch members in a social atmosphere. Please park nicely; there is no car park at the pub and the village streets are narrow and winding!

Chorlton-on-Medlock Pubs

Bob Potts

It is now over twelve years since my books about the old pubs of Hulme and Chorlton-on-Medlock were published. With a new edition in preparation I needed to check on some of the survivors, so at 5.45pm on 31st August I set off on my bike for Chorlton-on-Medlock.

I soon arrive at the site of the Hussar, Arnott Crescent. It was pulled down two years ago and there are new buildings there now. Around the corner, the Chequered Flag is still in business. I used to live near here and memories abound.

There are enough newish pubs in the proximity of Oxford Road for a good pub crawl. I cycle past Jabez Clegg's, Barney McGrew's, McNally's (formerly the Old Steam Brewery), take a look at the Flea & Firkin (an old cinema) at All Saints and move on to the Irish theme pub called Scruffy Murphy's on Grosvenor Street. Further on, I step into a newly opened bar called the Sandbar. It's an OK place and the barmaid knows her stuff. The Lass o'Gowrie on Charles Street is upmarket and still has the best-looking pub façade in C-on-M.

C-on-M's old pubs in 1984

Bowling Green, Grafton Street
Church Inn, Lower Cambridge Street
Clynes Wine Bar, Cavendish Street
Blackstock, Upper Brook Street
Ducie Arms, Devas Street
Ducie Arms, Stockport Road
George & Dragon, Ardwick Green South
Gold Cup (Wellington), Stockport Road
Grafton Arms, Grafton Street
Kings Arms, Helmshore Walk
Lancaster, Plymouth Grove East
Lass o'Gowrie, Charles Street
Mawson Hotel, Frances Street
Old Abbey, Park Street
Plymouth Grove Hotel, Plymouth Grove
Salutation, Higher Chatham Street
Sherwood Inn, Statham Walk

C-on-M's new pubs in 1984

Chequered Flag, Brackenbury Walk (1971)
Cock & Bull, Stockport Road (1978)
Falcon, Kincardine Road (1980)
Hunting Lodge, Oxford Road (1971)
Hussar, Arnott Crescent (1970)
King William IV, Justin Close (1967)
Phoenix, Oxford Road (1973)



King William IV - boarded up

The change of scene at the Kings Arms, Helmshore Walk, is dramatic. The old pub is boarded up and vandalised. A passer-by informs me that it might get demolished. Well, that would be a mercy. The neighbouring Sherwood was knocked down some years ago.

I pedal down Stockport Road. The Cock and Bull and the Gold Cup - the new and the old - look busy. I arrive at the Lancaster. Shock! Horror! The lovely old Victorian pub is now only a shell. A friendly Irishman tells me that the place was torched about a year ago. A former regular, he shakes his head sadly. I tell him I am off to the Falcon in Kincardine Road and he enlightens me: 'It's called the Tilted Falcon now, because of subsidence.' I check it out. The Tilted Falcon is a fine, newish Banks's pub with a warm, welcome glow to it.

It is now dusk and I take a look at the Plymouth Grove Hotel (Boddingtons). Much further on is a new pub, a free house called the Grove. The Blackstock is boarded up, so the nearest competitor for the Grove is the old Ducie Arms (Whitbread) on Stockport Road.



Blackstock - boarded up



Lancaster - burned out

Over now to Grafton Street. The Bowling Green (Greenalls) and the Grafton Arms (Holts), rebuilt about eight years back, are thriving in a busy area.

I decide to bypass Clynes (Vaux) on Cavendish Street and the Ducie Arms, Devas Street. Ditto the Old Abbey Inn, the George & Dragon, the Mawson, the Salutation and the Church Inn (Lees) on Lower Cambridge Street. All are still there. The King William IV in Justin Close is closed. The Hunting Lodge and the Phoenix, two bars on Oxford Road, were also short-lived.

Next month - biking around Hulme.

The Pub Chains

Remember when all pubs were owned by breweries? It's a bit different now, and Peter Davies of CAMRA's Retail Group has provided this summary of what some of the pub-owning companies are up to...

Allied Domecq

In August Allied Domecq agreed the sale of its 50% share of Carlsberg-Tetley to Bass for £200m. The deal may be referred to the Monopolies & Mergers Commission, but whatever the outcome it takes the company out of brewing. This makes Allied Domecq Britain's largest pub group with some 4,000 outlets. Bass have stated that they are likely to maintain Carlsberg-Tetley's brands for the present, but the supply deal with C-T expires at the end of 1997 and will not be renewed on the current terms.

Enterprise Inns

Has acquired the John Labatt Retail pub chain (530 outlets) from Belgian Interbrew for £62m, taking its pub tally to around 1,000.

Head of Steam

Expansion plans for this chain have been shelved following closure of its intended fifth outlet on Blackburn Station.

Inntrepreneur

In order to raise money to reduce borrowing, the company has sold 1,400 pubs to Spring Inns for £262m (see below).

The Office of Fair Trading requires that all Inntrepreneur pubs should be free from tie by March 1998, but the company is trying to have the condition set aside because of changes in the company and market conditions.

Jolly Taverns

An expanding pub chain which recently purchased a pub in Scarborough (the Albion).

John Labatt Retail

Owned by Belgian multinational Interbrew, the 530-pub estate was put up for sale for an estimated £100m. Both Century Inns and Enterprise Inns were tipped as possible buyers; Enterprise did the deal for £62m.

Magic Pub Company

The 277-pub company has been acquired by brewer Greene King for almost £200m in cash and shares.

Po Na Na (sic)

This company was floated at a value of £1.4m and plans to open pubs in Bristol in August and in Edinburgh in October.

Pubmaster

Five venture capital groups are believed to be interested in financing purchase of this 1,700-strong pub group from its debt-ridden parent company, Brent Walker.

Regent Inns

Valued at £200m, this 60-pub company is believed to be looking to move out of its M25 heartland by acquiring between 12 and 20 outlets in the North of England over the next year, possibly by taking over either Crossgate Leisure or Waterfall Holdings.

Spring Inns

A new company, 98% owned by Royal Exchange Trust (part of insurance company Guardian Royal Exchange), and 1% each by Grand Met and Fosters. Its purpose was to acquire the 1,400 pubs from Innpreneur. These are likely to be sold on, either to a single buyer or in large packages, although sale to individual tenants has not been ruled out. A supply deal with Scottish Courage continues, but could be renegotiated on sale.

J.D. Wetherspoon

The share price dipped by nearly 20% towards the end of July, after it was felt by the City that the company was overvalued. A bid from a brewery was considered a possibility.

Yates Brothers Wine Lodges

Planning a new outlet in Scarborough.

Any information concerning the goings-on in the various pub companies should be sent to Peter Davies at CAMRA, 230 Hatfield Road, St Albans AL1 4BW

Rupert Periwinkle R.I.P.

We are sorry to report the death of our long-serving correspondent Rupert Periwinkle, D.Litt. (Honoris Causa). Rupert's remains were discovered in the Performing Tigers' Compound at Enderby-Hughes' three-ring circus in Slumley Parva on the morning of September 21st. An obituary and full appreciation of Rupert's life and works will appear in the November issue.

Wainwright Revisited

Peter Cash

In 1938 the famous walker and author, A Wainwright, left Settle in Yorkshire, walked northwards across the



Dales, reached Hadrian's Wall and turned left. Following the wall westwards for some miles, he turned left again and returned to Settle down the west side of the Pennines, taking eleven days to complete the trip. He made detailed notes along the way and in 1986 these were published in his book, *A Pennine Journey*. It was with great interest, therefore, that in September 1996 we visited some of the pubs he mentions to see how much, or how little, they had changed in 58 years.

We first caught up with A.W. as he approached the Tan Hill Inn, the highest in Britain. In 1938 he arrived in mist and rain: *'I could discern the dim outline of a building across the road. I crossed to it, entered the porch and pulled my cape off. Then I went along the passage and into the stone-flagged kitchen. A huge fire was burning in the grate. I had a drink, and some bread and cheese.'* He stayed an hour before setting off north-east towards Bowes.

By contrast, we arrived in blazing sunshine. Several cars were parked outside and Pennine Way walkers were regularly arriving and departing. The porch still exists, though there is evidence of a filled-in doorway to the left, behind the modern Theakstons pub sign. Inside, the passage has gone, but the stone flags and fire remain, with the bar along the back wall of this central room. On the left was a slightly more formal room, whilst a modern extension on the other side housed a pool table. Back in the main bar, postcards and other memorabilia are on sale in one corner.

On his visit, A.W. was the only customer, but 58 years later the pub was nearly full, with both motorists and walkers (there is also a bus stop outside) partaking of the menu, which included giant Yorkshire puddings with a variety of fillings. We selected Old Peculier (at £2 a pint) from the Theakstons range of beers.

After visiting Bowes, A.W. sought accommodation in Cotherstone: *'Cotherstone offers no welcome for the visitor. If one of the cottages were to exhibit an "Apartments" sign, Cotherstone would be outraged and humiliated. There is an inn, but there were motor cars outside, a bad*

token for the walker, so I went on and out of the other end of the village.'

There are, in fact, two pubs, both buildings much older than 1938, though one may have had a different function then. We opted for the Fox & Hounds, perched above the road on a bend, and with good views. I like to imagine that this is the one A.W. judged too grand, for it is indeed still very posh, with an upmarket menu and wine list. It was gratifying to find local real ales on sale, including excellent bitter from nearby Butterknowle Brewery. Empty when we arrived, the pub started to fill as customers drifted in and placed orders for lunch. A cheese is made locally and we bought some from the village shop.

A.W. continues towards Middleton: *'Two miles further I came to Romaldekirk and as it was then quite dark, I looked for lodging. It is a friendly place, with two inns abutting on the village green. The Rose & Crown was out of the question; it looked much too fine and expensive, so I made my way to the Kirk Inn, an unpretentious little house which half turns its back to the green.'*

He did, in fact, spend two nights here, but noted that *'The Kirk Inn is not a place of laughter and song; it is forsaken and lonely, and neglect is eating its heart away. A laugh or a shout drifts from the Rose & Crown,*



Tan Hill Inn

but within the Kirk Inn there is the quiet of death. I opened the door at half past seven. It was not opened again that evening.'

He was made welcome enough by the landlady and her daughters, but left with the impression that a blight lay over the house. However, in the light of dawn he pronounced Romaldkirk '*an arbour of great loveliness...no other place in Teesdale quite so pleasant.*'

Romaldkirk was in fact our base for the week. The Kirk Inn was shut when we arrived, so we tried the Rose & Crown. It is still fine and expensive; with Pedigree at £1.86 and Old Speckled Hen at about £2.14, this was our one and only visit.

ROMALDKIRK

Rose & Crown Hotel (Harbit Heal, proprietor); A.A. & R.A.C.; residential; luncheons & teas; hard tennis courts; fishing; garage & modern sanitation

1930s advertisement

Happily, the Kirk is a place transformed! It is thriving, with a varying selection of real ales including many local ones, and excellent home made food. According to the locals, A.W.'s description may well have held true a decade or so ago, but current hosts Dennis and Ros changed all that. The Kirk got a 'try also' in the 1989 Good Beer Guide and in 1990 it ousted the Rose & Crown as the full entry, and it has featured regularly in the guide since. Because the village no longer has a shop, the Kirk doubles as a Post Office.

Beers at the Kirk included two from the High Force Hotel brewery and 'Leo's', brewed by Britain's youngest brewer, Leo Middleton, at Stainton Grove, just to the north of Barnard Castle. Leo previously worked at Butterknowle before launching his beer this April. Indeed, the Kirk was the launch pad for Butterknowle beers when that brewery started in 1990.

A.W. walked through Middleton the next morning, towards High Force waterfall, turned north at Newbiggin, before the Hotel, to cross Weardale and go on to Blanchland in Northumberland. He passed not far from one other pub, which demands inclusion here. Before High Force is Low Force, a double but less spectacular waterfall, where walkers can cross the Tees via the small Wynch suspension bridge. From here a footpath crosses the Pennine Way and leads to Holwick village and the Strathmore Arms.

Voted CAMRA Country Pub of 1995 and 1996 for the area, it has a welcoming main room with a stone-walled bar and open fire. There are excellent value home made meals and the pub attracts a wide variety of customers: on our first visit there were numerous bikers attending a weekend event (free camping adjacent). Beers are from the Theakstons range plus local guests. We sampled the Hogshead and Black Bull.

The licensee, Ollie Hawdon, told us about a previous landlord who, when the pub was cut off and had run out of beer, set off on foot with a few regulars. Using a child's sledge, they brought a barrel of beer across the fields from the High Force Hotel, and over the little suspension bridge, back to the Strathmore!

We visited one more of A.W.'s ports of call; Alston, the highest market town in England. Although we tried two of the pubs, he had arrived exhausted and after dark on the very day of the Annual Show, and was glad of shelter in a private house that night. The town itself is still much as he described it, with the main street steep and cobbled, flanked by straggling rows of buildings.

THE MIDLAND BEER COMPANY

826 Manchester Road Castleton, Rochdale
near Castleton BR

FOUR REAL ALES

Burtonwood 99p a pint

Theakstons, Taylors and Guest Beers

Thatchers Cider

plus German and Belgian Beers

Lunchtime food Monday - Friday

01706 750873

Open all day

CAMRA has produced a 'Manifesto' for 1996/97. This is a summary:

The future for Britain's drinkers

CAMRA believes that the diversity and vitality of beer and pub culture is an important part of our heritage. The diversity is under threat and the Campaign is determined that drinkers in the future will be able to enjoy a choice of good beers, at reasonable prices, from a variety of good pubs.

The next few years will be vital

* The European Commission is examining the tie between brewer and pub. CAMRA wants to see the traditional tenanted pub remain, to protect the diversity of our brewing industry.

* The highly successful guest beer law needs to be protected and extended. The guest beer must remain a real ale.

* High beer tax threatens thousands of pubs with closure.

* There is little time left to prevent the collapse of the brewing industry into a market dominated by only two brewers.

Competition

CAMRA is resolutely hostile to takeovers and mergers in the brewing industry. All mergers should be blocked unless there are clear benefits to the consumer. Recent mergers have been against the interest of consumers in terms of choice and price.

CAMRA supports the principle of the tied house system, which maintains a diverse beer market and a range of independent brewers.

The guest beer must remain as a real ale, otherwise there will be a flood of national lagers, and the guest beer law must be extended to non-brewing companies which are currently exempt.

There should be a statutory definition of local monopoly - 25% of the pubs in any one licensing district.

Taxes

Britain's beer taxes are far too high. Since the creation of the European single market, foreign beer has flooded into this country, threatening thousands of small pubs with closure. A third

The CAMRA Manifesto 1996/1997



of this trade is illegal and high taxes are promoting crime.

All alcohol duties should be lowered to the European average over the next three years. This would eliminate unfair cross-border trade, safeguard jobs, and above all keep the traditional community pub in business.

CAMRA wants to see smaller brewers pay a lower rate of tax, promoting diversity and choice in local beer markets. Such progressive excise duties are common in Europe.

The CAMRA Manifesto 1996/1997

Consumer rights

CAMRA wants to see short measure prohibited. The Weights and Measures Act should be amended so that a pint of beer or cider must contain 20 fluid ounces, plus any head.

Consumers have a right to know what is in their pint. CAMRA wants the mandatory listing of all ingredients in alcoholic drink, the place of brewing, and whether the drinks are traditional or processed.

Licensing

Licensed premises should be able to open the hours that suit their staff and customers. There should be a general liberalisation of licensing hours, with appropriate safeguards and controls on nuisance.

Accompanied children should be allowed into suitable pubs at the licensee's discretion. The new children's certificate system has been erratic and unjust in its operation: CAMRA wants it simplified.

CAMRA wants the granting of licences to be reformed: new licences should only be refused on specific, clearly drafted grounds.

Saving the pub

Customers should be consulted before pubs are closed or refurbished and given the right to oppose changes. Pub owners should be required to publicise proposed changes locally.

Planning law is weak in defending pubs: often a major change of use needs no planning permission. Pubs should be given their own 'Use Class' to prevent this.

CAMRA believes a well motivated publican with a stake in the business and in day-to-day control of his premises is essential to the proper running of the pub. Publicans should have the right to buy their pub if ownership changes.

Running a tenanted pub must remain a partnership, with rents, capital ingoings, barrellage agreements and responsibilities for tenants being realistic in light of likely trade.

CAMRA supports moves to give some rural pubs relief on their business rates. The tax burden on the pub and the drinker needs to be cut across the board, as it is the best way to cut prices.

Bavarian breweries in decline

Beinlos

Three Bavarian breweries close every month, on average. The president of the Bayerischen Brauerverbunds eV, Georg Schneider, estimates over-capacity at 20-30% and increased costs are likely to bring a round of price increases at the turn of the year.

At the end of 1995 there were 702 breweries in Bavaria - 42 fewer than in 1994. Another 30-35 will have gone by the end of 1996. If you discount the microbreweries and teaching breweries, only around 600 are left - 1,000 fewer than in 1960. 18,000 people were employed by the breweries at the end of 1995, compared to 20,000 in 1989. Despite these closures, 41% of all European Union breweries are in Bavaria.

1995 beer production was down 5.5% to 25.9 million hectolitres and another four to five percent cut-back is forecast for this year. Currently 5.6% of all Bavarian beer production is exported from the state. Weizenbier, with a market share of 30%, is the leading product, although in the North Bavarian breweries Pils is the main product.

A worrying trend is canned beer - six Bavarian breweries now produce canned beer and a half-litre can sells for 49 pfenning (that's 23 pence per pint!) Canned beer production is expected to rise by almost 10% this year. Georg Schneider hopes he doesn't see the day when 'beer will be served in plastic bottles like alcohol free drinks.' That day arrived in England over ten years ago.

Bury Beer Festival

The next organising meeting is from noon on Saturday 21st September at the Tap & Spile in Bury. Anyone interested in contributing ideas (or just getting a sneak preview of the beer list) is welcome to attend. All offers of staffing help will be gratefully received. (Remember, there are several perks to volunteering, even if you can only spare a couple of hours, and there is usually a thank-you event afterwards!) For general information, contact Sue or Alan on 01204 574790. For staffing information, contact Graham Chinn on 0161 652 4524.

Contributors to this issue: Paul Roberts, Keith Egerton, R Critchey, Sue Barker, Alan Ainsworth, John Hutchinson, Barbara Lee, Bob Potts, Mark McConachie

Branch Diary

Rochdale, Oldham & Bury

Tues 1 Oct 8.30pm, Branch Meeting, Welcome, Whitefield

Wed 2 Oct, Campaigning Crawl of Royton. Meet 8pm Railway; 9pm Dog & Partridge

Sun 6 Oct 11am. Tandle Hill 10K run, walk, cycle. Meet Tandle Hill Tavern

Wed 9 Oct 8.30pm, Autumn Pub of the Season - Swan, Dobcross (free house). All welcome

Tue 15 Oct 8.30pm, Committee Meeting, Wellington, Stand Lane, Radcliffe

Sat 26 Oct 12noon, Bury Beer Festival Organising Meeting, Tap & Spile, Bury Centre

Tue 29 Oct 8.30pm, What's Doing Collation, Flying Horse, Town Hall Square, Rochdale

Contact: Peter Alexander 0113 232 4023(w), 0161 655 4002 (h)

Trafford & Hulme

Thur 3 Oct 8pm, Peveril of the Peak, Great Bridgewater Street, Manchester, followed by Britons Protection and Crown, Deansgate

Thur 10 Oct 8pm, The Bar, Wilbraham Road, Chorlton, followed by Spread Eagle and Beech

Sun 13 Oct noon onwards, Holly Bush Vintage Weekend, Little Leigh

Thur 17 Oct 8pm, AGM, Queens Arms, Red Bank, Manchester

Thur 24 Oct 8pm, Railway, Broadheath, followed by Packet House, Cresta Court, Hogshead and Orange Tree

Thur 31 Oct 8.15pm, Knutsford Crawl: Builders Arms, followed by Legh Arms, Cross Keys, Freemasons, White Lion and White Bear

Contact: Roger Wilson 0161 827 0765 (w) or 0161 941 5602 (h)

North Manchester

Wed 2 Oct, New Members Crawl. Moon under Water, Deansgate, 7pm; Crown & Anchor, Cateaton Street, 8pm; Hare & Hounds, Shudehill, 9pm; Beer House to finish

Wed 9 Oct 8pm, Committee & Social, Pint Pot Brewery, Adelphi Street, Salford

Wed 16 Oct, 8pm Branch Meeting, Beer House, Angel Street, Manchester

Wed 23 Oct, Queens Arms, Red Bank, 7pm; Marble Arch 8pm, Pot o'Beer 8.30, Beerhouse 9pm, Smithfield 9.30

Mon/Tues Oct 28/9, 6pm onwards. WD collation, Beer House, Angel Street. Yes, two evenings!

Wed Oct 30, Student Social: start at Pint Pot Brewery. Details later.

Contact: Roger Hall 0161 740 7937

Dave and Sue welcome you to the

QUEENS ARMS

FREE HOUSE

Tel. 0161 834 4239

4/6 Honey Street (off Red Bank), Cheetham

Serving a large range of traditional ales supporting the independent brewers

**Batmans Mild & XXXB - Mitchells
Bitter - Old Peculier - Taylors Best
Bitter & Landlord - weekly guest beers**

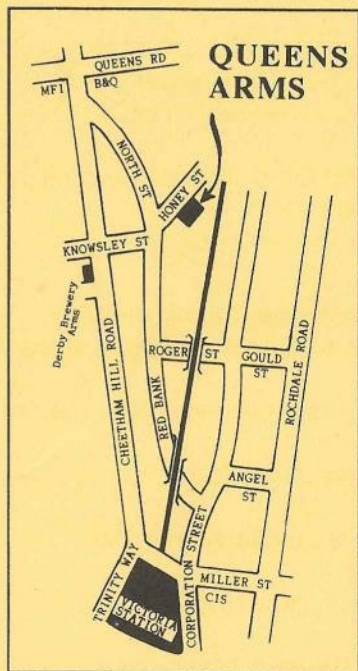


Westons Traditional Cider on handpump

A large menu plus home-made specials
available seven lunchtimes a week

Hot and cold food available until late evening

Opening Hours: 12.00-11.00 Mon-Sat; 12-10.30 Sunday



Children's play equipment in the Beer Garden, with swings, slides, climbing net, etc.

We have a Children's Certificate so families are welcome inside or in the Beer Garden.

Bar-B-Que for hire free of charge.

A permanent range of draught
**Belgian beers including Kwak, Le
Trappe & Riva Blanche**, not
forgetting the Continental bottles

Bar Billiards, Backgammon, Chess, etc.

General Knowledge Quiz Night
Tuesday. Beer Prizes

*We're in the Good Beer Guide and
CAMRA's Good Food Guide*