

25p

What's Doing

JANUARY 1997



The Manchester Beer Drinker's Monthly Magazine

CLASSIC PUB REOPENS



The Railway at Broadheath, listed as 'at risk' in the Good Beer Guide, reopened in early December after essential repairs. The interior is unchanged, except for a redecoration, but new windows have meant the loss of the nostalgic collection of GBG stickers dating back to the 1970s. A games machine has appeared in the lounge, but the piped music has gone. Boddingtons mild and bitter are sold as before.

New Yates's

December is the month for pub openings and so Yates's launched their new 'flagship' city venue on a wet Tuesday the 17th. The opening was without ceremony bar the Town Cryer, so thankfully we were spared the usual Man United stars, Coronation Street actors and Gladiators.



The pub is in a former bank on the corner of Portland Street and Chorlton Street. It consists of one large room with an added conservatory and the bar at one end. A large central area, intended for 'vertical drinking', is prominent, and surrounding this are raised areas with a smattering of furniture for diners and those drinkers who prefer to sit. Beers are Boddies and John Smiths at 160p. Music is definitely to the fore, with a DJ in residence.

The pub seems to be aiming for the younger end of the market and it will doubtless be successful. The only gripe with the first customers seemed to be that the toilets are on the second floor!

Across town on High Street, the façade of Yates's Blob Shop has had windows fitted and a subtle name change to 'Blob Shop - the unique and original bar'.

Magees

The former Crofters Hotel (aka Magees) on St Georges Road, Bolton, appears to have new owners. A few weeks ago, signs advertising 'Gallagher's Oyster Bar' were being fitted.

Prices Survey 1996

A cold November evening saw eight stalwarts brave the elements to carry out the annual survey of City Centre prices. The following points are worthy of particular mention...

- ☞ There is a greater choice than ever of real ale
- ☞ Real ale can still be obtained at reasonable prices
- ☞ Real mile is still available
- ☞ Cheapest pint 95p (Moon Under Water)
- ☞ The £2 pint has arrived (Dukes 92)
- ☞ Local brewers offer the best value
- ☞ Some pubs are reluctant to display prices

Many pubs still do not have visible price lists. What on earth are the Trading Standards people doing? When asked, bar staff are often reluctant to reveal prices. In one pub, the City on Oldham Street, the refusal led to a violent incident. Someone claiming to be the licensee assaulted the surveyors and the police were called. Let's hope the licence is revoked.

Many pubs are still closed post-bombing: Metro, Mitre, Bouchelles, Swan with Two Necks, Wellington.

Freeflow beers seem to be coming in extensively, often at a premium price. £2.30 for Caffreys seems a bit steep when you can get Holts for £1.02. Mind you, the Crown & Cushion has neither the ambience nor cachet of Henry's.



Cheapest pint - Moon Under Water

Short measure doesn't seem to be a problem, at least in Central Manchester. Only one pub (a GBG one, unfortunately) served less than a full pint. It was topped up when asked, but no notices were displayed. Once again the Trading Standards people need to get their act together.

Many pubs have changed their range of beers and a few have changed their decor and names as well. Kings Café Bar is now Quo Vadis and is flirting with real ale once more. Caffreys is the Frog & Bucket and the Frog & Bucket is Tommy Ducks Whisky Bar. Yates's is the Blob Shop and the Desert/Tavernetta/Dancing Weasel has been done up and is as posh as can be.

The pubs surveyed

(Unless mild is specified, all the beers are bitters)

Beer House, Angel Street: Thwaites 99p, guest mild 125p; other guests 135-170p

Blob Shop, High Street: Boddingtons 100p, Stones 100p, Thwaites 100p

Britons Protection, Great Bridgewater Street: Tetley 160p, Robinsons 165p, Jennings 165p, Boddingtons 170p

Burton Arms, Swan Street: Theakstons BB 135p, XB 145p

Commercial, Liverpool Road: John Smiths 130p, Websters 135p

Cotton Tree, Great Ancoats Street: Chesters Mild 118p, Trophy 130p, Boddingtons 136p

Courtney & Co, Parsonage: Boddingtons 160p, Directors 165p

Crown & Anchor, Cateaton Street: Holts Mild 96p, Bitter 102p

Crown & Anchor, Hilton St: Chesters Mild 129p, Wadworth 6X 132p, Boddingtons 136p, Landlord 148p, Pedigree 156p, guests 156-173p

Crown & Cushion, Corporation Street: Holts Mild 96p, Bitter 102p

Ducie Bridge, Corporation Street: Boddingtons 140p

Dukes 92, Castle Street: Boddingtons 150p, Landlord 200p, guest 200p

Dutton Hotel, Park Street: Hydes 132p

Gullivers, Oldham Street: Lees Mild 115p, Bitter 120p

Hare & Hounds, Shudehill: Tetley Mild 134p, Bitter 135p, guest 145p

Hat & Feathers, Mason Street: Holts 105p. *Refused to give prices of other beers*

Hogshead, High Street: Range of beers 163-185p

Jolly Angler, Ducie Street: Hydes Westwoods 115p, Bitter 132p

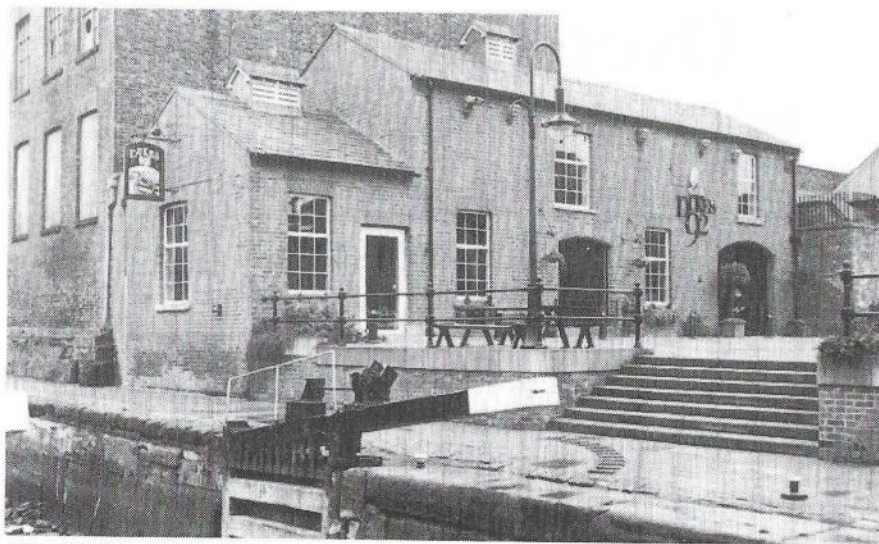
King, Oldham Street: Tetley Mild 120p, Bitter 125p, Marstons Bitter 125p

Land o'Cakes, Great Ancoats Street: Chesters Mild 129p, Trophy 134p, Boddingtons 136p, Flowers IPA 147p

Lord Nelson, Newton Street: Worthington Best 115p

Marble Arch, Rochdale Road: Hopwood 125p, Marstons Bitter 135p, guests 160-170p

Millstone, Thomas Street: John Smiths 125p (99p on happy days)
Moon Under Water, Deansgate: Youngers Scotch 95p, Directors 135p
Moulders Arms, Heyrod Street: Green Label 110p, Hatters Mild 135p, Theakstons 135p, Peter Yates 135p
Mulligans, Southgate: Tetley 145p, Ruddles BB 160p
Oxnoble, Liverpool Road: Boddingtons 150p, Landlord 170p, Pedigree 180p, Old Speckled Hen 180p
Pot of Beer, New Mount Street: Robinsons Dark Mild 134p, Boddingtons 142p, guests 154-156p
Quo Vadis, King Street West: Tetley 190p, Pedigree 190p
Royal George, Lever Street: Vaux Samson 135p
Sams Chop House, Back Pool Fold: Websters 155p, Theakstons XB 174p
Sinclairs, Shambles Square: Sam Smiths 117p (99p for students)
Smithfield, Swan Street: Highgate Mild 100p, guest beers 145-160p
Smithfields, Shudehill: Banks's 125p, Pedigree 136p
Tommy Ducks Whisky Bar, Newton Street: Tetley 140p, John Smiths 140p, Ruddles County 175p, Directors 175p
Unicorn, Church Street: Bass Light 125p, Worthington 138p, Stones 143p, Bass 152p
Victoria Station Bar: Boddingtons 199p, Bass 199p
Wheatsheaf, Oak Street: Burtonwood Mild 116p, Bitter 120p
White House, Great Ancoats Street: Grays 100p, Holts 106p
White Lion, Liverpool Road: Boddingtons 150p, Landlord 170p, guests 170-180p



The £2 pint - Dukes 92

8th Atherton Beer Festival

Formby Hall, Atherton

(Eight minutes from Atherton Central Station)



Over sixty beers

Bathams and beers from Sussex/Hampshire
plus many winter ales

Admission price includes glass and programme:

Thursday 6pm - 11pm: £3

Friday 6pm - 11pm: £3.50

Saturday 12noon - 4.00pm: £3. 7pm - 11pm: £3

£1 off for CAMRA members

Food and entertainment at all sessions

Lees Corner

Bernie Jackson

The Royal George at Greenfield finally opened its doors to the public on 12th December last with Chris & Dawn Hill (formerly of the Middleton Archer) at the helm. This large, ex-Tetley house is a managed 'Eatery' style pub selling, like all the company's tied houses, traditional beer. Other pub news is that Lees have bought the Wheatsheaf at Atherton (a former Centric house, below) which local chap Bob Meadows is running. Licensees on the move include Nicky Oliver from the Bricklayers to the Nowster at Mills Hill and Stephen Brown has taken over at Lees' Irish pub, Delaneys in Middleton.

After many years the Brewery is to launch another 'Passport' scheme early in 1997. It is not clear yet if all of their pubs are to be included or what the prizes will be, so watch this space. Other news coming out of the brewery is that William Lees-Jones (the Chairman's eldest son) has been appointed to the Board of Directors and judging of their annual 'Best Cellar' award is currently under way. There



are several categories: 'local' pubs, Welsh pubs, managed houses, an overall winner and a special award for 'Best Endeavour'.

The 1996 Harvest Ale (the 11th vintage) was launched on to the market on December 1st and already double last year's quantity has gone to outlets, including Harrods and Selfridges. Other bottled and keg beers have seen a rationalisation with bottled Pale Ale, Brown Ale, Export and Archer Stout being dropped and a new keg bitter 'Greengate', introduced. This is not a 'smooth' beer, but a low ABV keg aimed at the considerable club trade.

Finally, in January 1997, on behalf of the International Brewers Guild, Lees are hosting a series of workshops on Brewing For The Micro and Smaller Brewers, where it is hoped the smaller fry in the industry will benefit from each other's experiences.

Irlam & Cadishead

Sean Kilgarriff

Joey Holts bitter has, after many years' absence, returned to that most westerly part of the City of Salford, Cadishead. In December it went on sale at the pre 'seasonal increase' price of £1 at the Royal Arms. This pub was formerly the Royal British Legion Club, but now there's a lounge open to the general public. The beer is proving so popular that landlord Des Armstrong is opening all day every day.

In neighbouring Irlam, Whitbread (Bowland Inns) has lodged plans with Salford Council to build a 'Medium Brewers Fayre with Fun Factory' next to the Ship Canal at Irlam Locks. The proposed site will feature a 200-seat restaurant, children's indoor and outdoor play areas and car parking for 76 cars. Brian, the landlord of the Boathouse, the nearest public house to the site, said that he was aware that something was 'in the air', and that Greenalls would certainly object. Hang on a minute... don't Greenalls own Boddingtons and Whitbread brew Boddingtons beer? Who is in bed with whom this week? The Boathouse itself narrowly missed losing its vault forever in the latest revamp.

As Salford Council recently demolished both public toilets in Irlam, maybe this proposed development will provide a replacement meeting place for the youth of the area. They can always play 'throw the pub furniture (and each other) into the canal' if the Fun Factory fails to appeal.

Great British Beer Festival

CAMRA's 1997 Beer Bash is in London again and at an enlarged venue. For the last five years the festival has occupied the Grand Hall at Olympia, but this year it will be taking over the adjoining National Hall as well. The stage will be in the National Hall, so it will be a bit quieter for visitors who drink around the main bar in the Grand Hall.

For visitors whose enjoyment of real ale is enhanced by someone strumming a banjo, banging dustbin lids together or whatever, there will be small bars in the National Hall.

The Great British Beer Festival will be held on 5th-9th August. Details nearer the time.



Fall of the Imperial

By the time you read this the Imperial, London Road, will probably have been demolished. The site is to be redeveloped as the foyer of a new hotel incorporating the Joshua Hoyle building next door. (The two scaffolding-covered buildings were photographed just before Christmas.)



There was an eleventh-hour attempt to save a bit of the old Imperial by getting the Professional Footballers' Association (which was formed at the pub) to buy the ornate façade. They declined, and anyway, they didn't have anywhere to put it.

Kings Arms

When Dave and Sue Price moved from the Kings Arms on Bloom Street, Salford, to take over the Queens, Red Bank, there was concern about Greenalls' plans for the Kings. It is now thought that the pub will eventually be sold (along with a number of other Greenalls/BodPubCo properties in the Manchester area), but for the present the Kings will continue as before, selling a range of eight real ales.

The pub is in a safe pair of hands with new licensee (from 17th December) Mike Edwards. A couple of years ago Mike took over the Swan at Lees and built the trade up there for J W Lees.

Sorry . . .

Due to the uncertainty of the opening date of our new venture, Stalybridge Buffet Bar, (sometime in November is our hope, Railtrack permitting!), we're postponing the Porter's Festival until late January.

However this will now be . . .

The **2** **STATION** *Festival*

STARTING THURSDAY, JAN 30TH
UNTIL SUNDAY EVENING

There will be a selection of 50 plus beers, split between the two venues. The usual selection of food and festival glasses and T-shirts will be available.

Hope to see you there and there!

**THE STATION • WARRINGTON STREET
ASHTON-U-LYNE**

Wigan and District

Dave White

We have been watching the pub unfold before our very eyes for months. The MOON UNDER WATER finally opened to the public on Monday, 16th December. For those who still don't know, Wetherspoon's Wigan outlet is on the corner of Market Place and Library Street, and was created from three premises that used to belong to Max Spielmann, Dunn & Co the tailors, and the Halifax Building Society, though the last named property had been disused for several years. (Older drinkers may recall the CROSS KEYS being on this site.)

The layout of the Moon Under Water is similar to other Wetherspoon emporia, with a split-level ground floor and a 'No Smoking' area upstairs. As usual, beers from Scottish Courage dominate the bar, but ales from independents like Cains and Blackawton have also been on sale. Provided Wetherspoons don't start charging over-the-odds (Walker best bitter is an exorbitant £1.55 a pint in the nearby RAVEN HOTEL), the success of the Moon Under Water is guaranteed.

Just beyond the Raven, the BERKELEY SQUARE, Wallgate, has reopened, though with the same keg range as before.

Holts have reopened TRADITIONALS on Woodhouse Lane, Springfield, and renamed it the DOUGLAS BANK. The interior has been transformed, and actually resembles a pub for the first time in donkey's years. The



brewery has put a wall in to separate the vault from the lounge, and the overall effect is rather pleasing. In case you are wondering where the name comes from, Douglas Bank was the name of a nearby colliery.

Not all is well in Wigan, however; I am sorry to report the death of Pam Rodden, wife of landlord Jim of the MILLSTONE on Wigan Lane, Swinley. This Thwaites pub was closed at the time of writing.

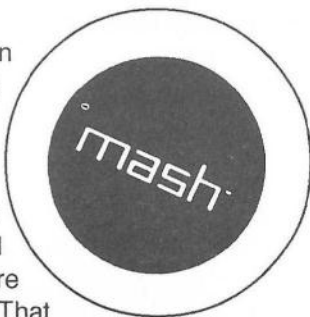
News in brief. Further to last month's report, the PLOUGH, Atherton Road, Hindley, continues to sell real ale, though only Walkers mild is available. After years of selling nothing more inspiring than Burtonwood bitter, the HOLTS ARMS (known the world over as the FOOT o'CAUSEWAY), Crank Road, Billinge, is dabbling with guest beers. A reliable source informs me that Black Sheep bitter was on sale recently.

Mash & Air

Mark McConachie

Probably the biggest opening of 1996 was that of the reputedly £2m Mash & Air on Chorlton Street/Canal Street in the city centre, just six days before Christmas. Operated by London restaurateur Oliver Peyton, this is a truly lavish affair occupying the four floors above Prague V. The lower two floors (Mash) are the bar-cum-casual eating areas; the upper two floors (Air) house a top-notch restaurant.

Apart from the bars, Mash has its very own micro brewery which produces four beers: Mash Beer (4.7%) premium bitter; Mash Peach (5%), which was not very peachy on my visit; Mash Blackcurrant Porter (5.3%), which I found disappointingly thin and most un-porter-like, and a Mash of the Month. All the beers are £2.40 a pint (yes, really!) and are stored under and served using gas pressure. That said, it may still prove interesting to the adventurous.



The interior is stark yet striking - mint green floors, ceilings and stairs, porthole lights, and a circular bar with the micro brewery behind it, visible through large porthole windows. All the founts and brewing equipment are orange to complete the picture.

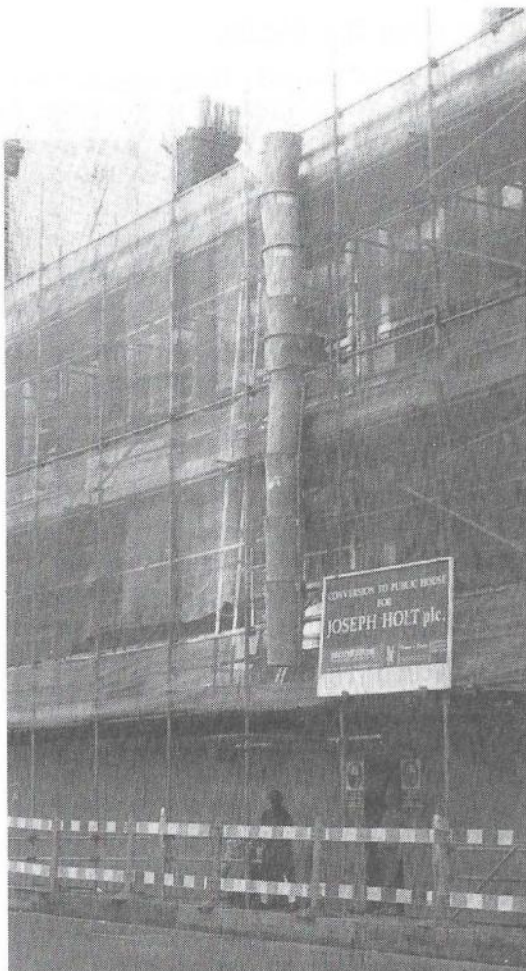
This is very much a venue for the style-conscious and one for those with deep pockets. It is nice to see such an ambitious venue as this opening in Manchester, as it shows there is confidence in the city. If the beers prove a success, perhaps the management might like to go the whole hog and serve them in cask conditioned form?

Holts Corner

Stewart Revell

With the start of a new year, Holts aficionados will be taking a keen interest in the progress of the new outlet under construction (right) at John Dalton Street in Manchester. The latest news from a source close to the action is that work will take longer than planned owing to unexpected site conditions. It was originally hoped that the opening would be around Easter time, but this will now be delayed by six or seven weeks.

Joeys don't have a name for the new pub yet, so readers are invited to write in with their suggestions. They aren't offering any prizes for the winning suggestion, but you might get a free pint!



WHAT'S DOING contributions should be sent to the editor c/o 88 Ringley Road, Stoneclough, Radcliffe, Manchester M26 1ET. News and letters must arrive by the 20th of the month for inclusion in the next month's issue.

WHAT'S DOING ADVERTISING: Full page £50 or £200 for six months, half page £35 or £150 for six months, quarter page £25 or £100 for six months. All adverts must be accompanied with payment. Cheque payable to What's Doing.

SUBSCRIPTIONS: Send cheque/PO for £2.70 together with your name and address to Roger Hall, 123 Hill Lane, Blackley, Manchester M9 6PW, for six issues. Cheques made out to "What's Doing".

BACK NUMBERS: 15p per copy. Send stamped addressed envelope to Roger Hall, 123 Hill Lane, Blackley, Manchester M9 6PW.

To join CAMRA send £12 to Membership, CAMRA, 230 Hatfield Road, St Albans, Herts AL1 4LW.

New one for Holts

Mark McConachie

The last of the ten pubs Holts acquired from Greenalls opened on 11th December and it was worth the wait. The Angel on King Street, Knutsford, is a very impressive affair indeed. Converted from a rather run-down, one-room pub (for a six-figure sum), the Angel now has high-quality rooms separated by a central bar. At the front of the house is a very classy lounge, divided into two rooms and tastefully decorated and furnished. At the rear and on a slightly higher level is a long vault which has the air of a baronial hall (well, it has for me).

Further work is being done on a function room and the seven bedrooms. The beers are excellent and at the usual prices, 96p for mild and 102p for bitter - very keen, considering the area. Food in the no-nonsense style (liver & onions etc) is available.

The Angel is a five-minute walk from Knutsford rail station at the far end of King Street and only a short walk from the Tatton Park entrance. Trains are hourly from Piccadilly via Altrincham (£3.60 day return) and the 289 and 290 buses from Altrincham will get you there too.

All in all, the new Angel is a splendid effort; a credit to the town and to owners Joseph Holt.

THE MIDLAND BEER COMPANY

826 Manchester Road Castleton, Rochdale
near Castleton BR

FOUR REAL ALES

Burtonwood 99p a pint
Theakstons, Taylors and Guest Beers
Thatchers Cider

plus German and Belgian Beers

Lunchtime food Monday - Friday

01706 750873

Open all day

Greenalls set to complete destruction of Worsley

Greenalls' predecessor, Boddies, managed a fair devastation job on the Cock, removing the vault and cardboarding the entire pub. The Barton Arms is like a rotting coconut, quite nice on the outside. It's hardly a bonus for Worsley Village. The Bridgewater, dating from the early years of this century, has already been knocked about a bit. The staircase went a long time ago and the front part has lots of traditional features like silly bar stools and raised eating areas. But at least the vault at the back remained more or less OK, serving as a village local for those stick-in-the-muds who favoured tradition. Now, even that will go.



You see, the Bridgewater has lost trade since the Barton Arms opened. So what do Greenalls do? Re-emphasise the traditional character of the Bridgewater so as to attract the vast majority of Worsleyites to whom the Barton Arms is anathema? No, of course not; don't be daft. They compete on the same basis. Knock all the walls down, throw most of the tables and chairs away, put in a central bar, do away with the vault and go for the 18-30s market in a big way. Just what the village wants. Sad that the licensing committee should agree.

Huey Green

A big new Banks's sign has gone up at the Lion & Lamb in Blackley and they've turfed the pavement. Come the summer and rolling the grass will have a different meaning for at least one North Manchester pub.

COME TO THE ALL YEAR ROUND BEER FESTIVAL

THE BEER HOUSE

Angel Street, Manchester. 0161 839 7019

12 REAL ALES ON OFFER

including

**BURTONWOOD BITTER,
THEAKSTONS XB and BEST BITTER,
MOORHOUSES PENDLE WITCH**

plus

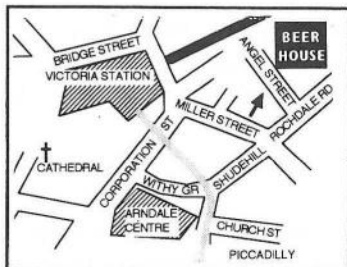
**8 EVER-CHANGING GUEST BEERS
including a GUEST MILD**



**PLUS A RANGE OF TRADITIONAL CIDERS,
DRAUGHT BELGIAN KRIEK, LEFFE BLONDE,
HOEGAARDEN & MANY BOTTLED BELGIAN
and other FOREIGN BEERS**

***SOMETHING FOR EVEN THE MOST DISCERNING
TASTE***

- * Lunchtime food seven days a week
- * Try our Sunday Breakfast 12 - 2.30
- * Evening Meals 5 - 7 Friday
- * Thurs 5 - 8 Choice of three curries
(veg and carnivore) + rice £2.50
- * Half price menus Monday lunch



OPEN ALL DAY MONDAY - SUNDAY
Bar Billiards & Darts
**THREE TRADITIONAL CIDERS
ALWAYS AVAILABLE**
GOOD FOOD - Vegetarians welcome
**NOW TAKING CHRISTMAS
BOOKINGS FOR FREE PARTY ROOM**

Letters

Do try and get your facts right

Sir - Further to your December issue, I write to correct one important error of fact. You state that it is now Robinsons policy to replace all departing tenants with managers. This is most definitely not the case. The brewery's policy is to review all tenancies as they become vacant to see whether the pubs are suitable for becoming managed houses. This does not mean that pubs will become managed houses as a matter of course, and indeed I know of at least one, the Blossoms in Stockport, which will remain a tenancy after the departure of the current licensee. Do try and get your facts right in future.

John Clarke, CAMRA Liaison Officer for Frederic Robinson Ltd

Inner city decline

Sir - Rhys Jones (Letters, Dec) suggests that I have accepted the lie about over-pubbing. Far from it. The growing number of on-licences nails that lie. Pubs are often in the wrong place. Our densely populated inner cities which spawned the archetypal beerhouse have lost population rapidly over the last two decades. Pub densities in relation to population have consequently risen and continue to do so, closures notwithstanding. In Manchester the average number of persons per pub is around 600; in Salford it's around 700. In the inner city the figures are lower - around 300 in Collyhurst and Miles Platting, for example. When you consider the economic and demographic trends in these areas, it's hardly surprising that the pubs are as desperate as I have described.

Gorton might be fine, but travel a mile citywards and things ain't so rosy. In the past we've managed pub crawls of Ordsall, Greengate, Miles Platting, Ancoats, Hulme and Lower Broughton. That's not so easy now.

Rhys's Challenge: Devise a crawl of 6 to 8 pubs in the inner city which demonstrates his point that there are still lots of good pubs. We promise we'll all come and judge for ourselves.

Roger Hall

Bigger Brook

Plans for enlarging the Brook at Brooklands Station have been approved. The existing lounge will be extended sideways and a small conservatory added. A seating area and terraced garden will be created outside, which should smarten up the bridge embankment considerably. Work is expected to be completed by April.

The Pub and CAMRA

The British Way of Life

The British Pub is a cornerstone of our way of life, more popular than restaurants, clubs, cinemas or other entertainment. Whether you drink real ale or not, people care about their pubs.



There is concern about a wide range of issues:

☆ high prices

☆ pub alterations:

- without consulting the pub users
- with little regard to the pub's heritage

☆ pub closures with no thought given to the community the pub serves

☆ landlord evictions with little account being taken of the business they have built up

Although better known for real ale, CAMRA is well established in campaigning for the British Pub. It is the only national organisation that speaks on behalf the pub customer.

CAMRA believes that...

☆ The pub is important to the community and fulfils a social function whether or not it sells real ale.

☆ Pubs offer a unique environment where drinking can take place in a controlled, sensible fashion.

☆ Pubs which are of historical interest and character should be preserved.

☆ Pubs should not be substantially altered without consulting the people who use them.

☆ Multi-roomed pubs should be retained, including the public bar, to allow for different types of people.

☆ Every time a change of use is proposed for a pub, planning permission should be required, so that locals who actually use the pub can have their say.

☆ Pubs in remote areas should be encouraged to combine with shops and post offices to keep vital services going.

☆ Sitting tenants should be given the right to buy when their pub is to be sold.

☆ Tenants should not be evicted if they refuse to sign leases on unreasonable terms.

What CAMRA does

☆ CAMRA has a Pubs Group which is responsible for devising national campaigns to increase the public awareness of pubs. For example, the Pub Design Awards, run in association with English Heritage, encourage designers to think about the customers when they revamp a pub, as well as promoting good new designs.

☆ CAMRA, with the Pubs Group's extensive expertise, advises on getting pubs listed (inside and out) so that they cannot be vandalised. CAMRA also advises people on how to go about preventing a pub being closed.

☆ CAMRA has a network of branches throughout the country and when a pub is under threat they are often involved in starting a campaign to save that pub. They do not operate on their own, but get the people who actually use that pub involved.

☆ CAMRA lobbies both the UK and European Parliaments. CAMRA also has links with organisations such as the Victorian and Georgian Societies to help protect the British Pub Heritage.

☆ CAMRA has regular meetings with council planners and local authorities to influence the future thinking of pub planning.



CAMRA Membership gives:

- * Monthly copies of *What's Brewing*, CAMRA's entertaining and highly-regarded newspaper.
- * Discounts on CAMRA products and publications (including the best-selling *Good Beer Guide*).
- * Advance warning of beer festivals throughout the U.K. and Europe - and discounts when you get there.
- * An invitation to join CAMRA's activities such as brewery trips, meetings and socials.
- * **ABOVE ALL**, you will belong to a flourishing and successful consumer movement which is acting as a champion for beer drinkers and pub users.

APPLICATION TO JOIN CAMRA

I/We wish to become members of the Campaign for Real Ale Limited and agree to abide by the Memorandum and Articles of Association of the Campaign.

Name(s)

Address.....

.....Postcode.....

Signature.....Date.....

I/We enclose the remittance for:

Single £14 ☐

Joint £17 ☐ (at same address)

OAP Single £8 ☐

OAP Joint £11 ☐ (at same address)

Student/Unemployed/Disabled £8 ☐

For Life and Overseas rates contact CAMRA HQ (01727 867201)

Send your remittance (payable to CAMRA Ltd) with this application form (or a photocopy) to:

The Membership Secretary,
CAMRA Ltd, 230 Hatfield Road
St Albans, Herts AL1 4LW



Beinlos in Bavaria

Paul Roberts

One of Germany's best known breweries, the Royal Thurn und Taxis in Regensburg, East Bavaria, is to close on 31st March 1997. After that date, the beers will be 'badge brewed' over 100 kilometres away at the

Paulaner brewery in Munich. Both breweries belong to the brewing giant Josef Schörghuber, as does Hacker-Pschorr in Munich. For some time now Paulaner has been trying to close the two Munich breweries and move to a massive, brand new brewery near the former airport at Riem, where Hacker, Paulaner and who knows how many other Schörghuber beers will be produced.



The Thurn und Taxis dynasty is headed by 13-year-old Prince Albert, although his 36-year-old mother, Gloria, as legal guardian, gave her consent to the closure. Gloria's husband, the 11th Prince (and 36 years her senior) died six years ago. Several years before that young Gloria was out on a shooting party with the famous (and slightly right wing!) Bavarian Premier, Franz Josef Strauß, who promptly popped his clogs.

At the end of the seventies, T&T produced almost one million hectolitres of beer a year, but the figure had fallen to around 32,000 hectolitres by the time of the sell-out to Schörghuber. Seventy years ago Regensburg boasted over 120 breweries and soon it will have nothing but a couple of Hausbrauereien.

T&T beers have been widely available in England for several years and Tesco stores in this region sell the range of Weizenbiers, Roggenbier and Pils.

New Vet

The Old Veteran on Eccles New Road, Salford, is expected to close for a complete refurbishment in February. The pub is under new management and a wide selection of beers is promised after the reopening.

Wigan Beer Bash

The Tenth Wigan Beer Festival Extravaganza will take place on 6th-8th March at the Mill at the Pier. More details next month.

Alas, poor Rupert

Just when Rupertophobes thought it was safe to read What's Doing again, disturbing uncertainties emerge. The inquest into Rupert's death was opened and adjourned sine die. DNA test results have been impounded by a Government agency and faxes from Burlima Faso seem strangely prescient if not written with 20/20 hindsight. Rupert's statements, lodged with his solicitor prior to his death on 21st September and released during December, include the following comments:



The plot to discredit the Campaign continues. Plans have been discovered which threaten to bring individual members into disrepute and assassinate others. Among the schemes I have uncovered are the following...

At a visit to a North Grotley brewery in December, one of the infiltrating agents will ensure that a fermenting vessel lid falls into a brew of festive ale, thereby ruining seven barrels of amber nectar and throwing the blame on to a Campaign member and the local branch.

During the annual tour of Grotley hostelrys, devised to ascertain the selling price of foaming ale from the wickets, a number of sleepers will be

placed strategically in half a dozen socio-economic group Z hostelrys to be visited by the surveyors. The focus of their attention will be a certain stentorian campaigner and his red-nosed assistant. Instructions are to assassinate both of them outside an amber nectar vademecum tavern.

The annual beanfeast of the Campaign is to be a fiasco greater than any other from which the Campaign will not recover. There are plans afoot to remove from office the only person who could make the event a success, but to continue to organise the event in a remote location, famous only for failed amber nectar shows. The chaos and ensuing riots will lead to the burning of sheep and cottages prior to the General Election, creating a hung parliament with 20 Plaid Cymru members.

Bubbles Pepsi and Boris Pratt will once again win the Beer Bore of the Year Awards, causing Campaign members to chuck up in disbelief and fail to renew their membership. Incompetents will be voted into positions of influence at both branch and national levels and major events will fail miserably as a result. 1997 will see the decline and eventual demise of the Campaign unless Grotley members rise up and expose the fifth columnists in their ranks.

Branch Diary

Rochdale, Oldham & Bury

Tues 7 Jan 8.30pm, Branch Meeting, Clarence, Bury Centre

Wed 15 Jan 8.30pm, Winter Pub of the Season, Merry Monk, College Street, Rochdale

Thur 16 Jan 8.30pm, Oldham Beer Festival Organising Meeting, Hogshead, Union Street, Oldham

Tues 21 Jan 8.30pm, Committee Meeting, Dusty Miller, Crostons Road, Bury

Sun 26 Jan 12noon, Bury Beer festival Post Mortem Meeting, Tap & Spile, Bury Centre

Sat 1 Feb 12noon, 1998 GBG Selection Meeting + Rochdale Pub Crawl - Contact has details

Contact: Peter Alexander 0113 232 4023(w), 0161 655 4002 (h)

Trafford & Hulme

Thur 2 Jan 8pm, Tatton, Tipping Street, Altrincham, followed by Bakers, Park, Faulkners and Orange Tree

Thur 9 Jan, City Survey. 8pm Crown, Deansgate; 10pm Vine, Kennedy Street. Finish City Arms, Kennedy Street

Thur 16 Jan 8pm, Rope & Anchor, 8.45 Vine (both B5160, Dunham Massey), 10pm Railway, Broadheath (A56).

Thur 23 Jan, City Survey. 8pm Britons Protection, Great Bridgewater Street; 9pm Church, Higher Cambridge Street; 9.30 Thirsty Scholar, then Salisbury, both under railway arches, Oxford Road. Finish Peveril of the Peak.

Thur 30 Jan 8pm, Unicorn, Hale Road; 8.45 Bulls Head, Wicker Lane (both Hale Barns). 9.30 Bleeding Wolf, finish Railway, Ashley Road

Thur 6 Feb 8pm, Legh Arms, Sale Moor. 10pm and finish, Brook, Brooklands Station

Contact: Roger Wood 0161 747 3987

North Manchester

Wed 8 Jan 7.30pm, GBG 1998 Shortlisting Meeting, Beer House, Angel Street, Manchester

Wed 15 Jan 8pm, Branch Meeting, Castle, Oldham Street, Manchester

Sat 18 Jan 12.30pm, Regional Meeting & AGM, Kingsway, Kingsway, Levenshulme

Wed 22 Jan, Irlams o'th'Height crawl. Dog & Partridge 7pm, Wellington 8.30, Red Lion 9.30, all Bolton Road.

Tues 28 Jan 6pm onwards, What's Doing collation, Queens Arms, Honey Street, Cheetham

Wed 29 Jan, Visit to Cains Brewery, Liverpool. Details later.

Wed 5 Feb, City Crawl. Peveril of the Peak, Great Bridgewater Street, 7pm; Circus, Portland Street, 8pm; Crown & Anchor, Hilton Street, 9pm; Jolly Angler, Ducie Street, to finish.

Contact: Roger Hall 0161 740 7937

Contributors to this issue: Sean Kilgariff, Paul Roberts, Bernie Jackson, Roger Wood, Keith Egerton, Mark McConachie, Alan Gall, Dave White, Brian Gleave, Stewart Revell, Roger Hall.

Dave and Sue welcome you to the

QUEENS ARMS

FREE HOUSE

Tel. 0161 834 4239

4/6 Honey Street (off Red Bank), Cheetham

Serving a large range of traditional ales supporting the independent brewers

**Batmans Mild & XXXB - Mitchells
Bitter - Old Peculier - Taylors Best
Bitter & Landlord - weekly guest beers**

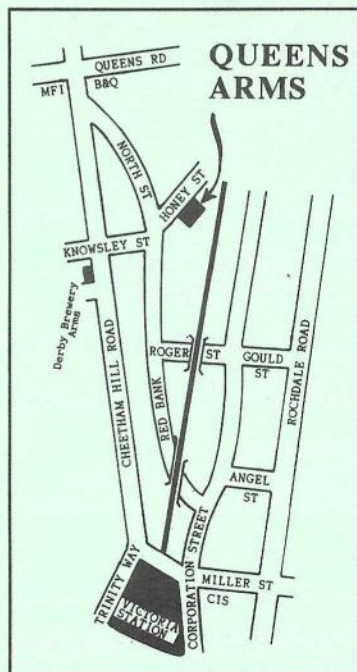


Westons Traditional Cider on handpump

A large menu plus home-made specials
available seven lunchtimes a week

Hot and cold food available until late evening

Opening Hours: 12.00-11.00 Mon-Sat; 12-10.30 Sunday



Children's play equipment in the Beer Garden, with swings, slides, climbing net, etc.

We have a Children's Certificate so families are welcome inside or in the Beer Garden.

Bar-B-Que for hire free of charge.

A permanent range of draught Belgian beers including Kwak, Le Trappe & Riva Blanche, not forgetting the Continental bottles

Bar Billiards, Backgammon, Chess, etc.

General Knowledge Quiz Night
Tuesday. Beer Prizes

*We're in the Good Beer Guide and
CAMRA's Good Food Guide*