

WHAT'S DOING



DEC
1979

THE MANCHESTER BEER DRINKER'S MONTHLY MAGAZINE

OXFORD BLUES

The Oxford on Oxford Road in Manchester is to be closed in January to make way for development of the site. The pub is leased by Wilsons from Booths Charities. The lease expired five years ago, since when Wilsons have been tenants at will. The demolition of the Oxford means the irreplaceable loss of yet another traditional pub in a city where few links with the past remain. It is pleasing to know that it is not

Wilson's who want to knock the place down, but this does not make the destruction of a part of Manchester's history any easier to bear.

Roger Hall



FLIGHT OF FANCY

On November 15th Lees opened their newest pub, the Apple and Pear, on Andover Avenue in Alkrington. The pub is an ordinary unpretentious estate pub and its name derives from two ponds in the vicinity which were known by the locals as Apple and Pear because of their shapes. Unusually for a Lees pub, the beer is handpumped rather than served from pillar taps.

Roger Hall

DOWN THE JUNCTION



A CPO has been placed on Lees' brewery tap, the Junction, as part of a road improvement scheme. The expanse of waste ground opposite the brewery has been purchased by Lees for the building of a bonded warehouse.

Stewart Revell

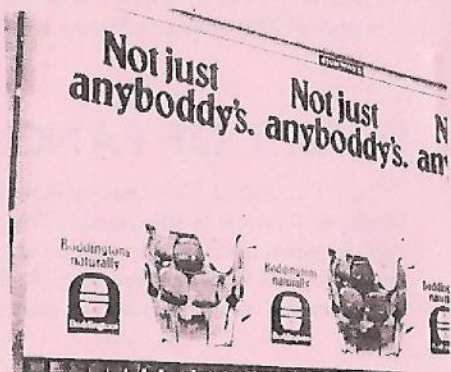
KENTUCKY FRIED BOOZER

Grand Metropolitan, owners of Watneys, Trumans and Wilsons breweries, among other things, have launched the 'Huckleberry fast food unit'. The 'fast food unit' is an American invention based on the premise that some people will eat anything if they get it fast enough. Six pubs in the London area are to close and be turned into restaurants/takeaways selling such delights as 'Metroburgers' (74p) and 'regular french fries' (16p) (presumably for the regular guys).

Chef and Brewer, Grand Met's catering subsidiary, say that they do not intend converting any more pubs, but are looking for suitable premises on the 'open property market'. I wonder at what stage a closed pub becomes 'open property'?

BODDY LANGUAGE

Boddingtons have started their first ever poster advertising campaign. With more brewing capacity at Strangeways, the company is seeking expansion in the free trade, which now accounts for 18% of their business.



WILSONS NEWS

Paddy's Goose on Bloom Street, Manchester 1, has had its fake handpumps replaced by the working variety.

La Tavernetta on Great Ancoats Street, formerly the Desert (sic), now sells handpumped real ale. In the days before Wilsons went daft the pub was called the Kings Arms.

The following pubs have had handpumps installed recently:

The Bird in Hand, St Stephen Street, Salford

The Mauldeth, Kingsway, Manchester 14

The Nelson, Barlow Moor Road, Didsbury

The handpumps in the Nelson are identical to those installed at the Britannia, Newton Street, Manchester. The landlord of the Nelson calls them the Rolls-Royce of handpumps, and very attractive they are too.

Information; Leo King

BODDERNISATION

Boddingtons have done their thing at the White Lion, Little Hulton. The well used handpumps have been done away with and new push-button pumps adorn the newly constructed bar.

Stewart Revell

GREAT GUNS

The Red Dragon on the Crescent, Salford, has reopened selling fizzy Scottish & Newcastle beers. One of them goes by the delightful name of Centurion Light, which is a very apt name for a tank beer. Bearing in mind the awful Colt 45 from America, can we expect a 'Luger n Lime' from Germany, or indeed Holts' Flintlock?

MIDWAY LINE-UP



The Midway on Newbridge Lane, Stockport, has added Winkles Saxon Cross bitter on handpump to their range of beers. The line-up is now Saxon Cross, Pollards bitter, Boddingtons bitter, Thwaites mild and bitter, Midways 80/- and Draught Bass.

Humphrey Higgins

PUB PRESERVATION



The speaker at the Trafford & Hulme branch meeting on January 17th at the Victoria Tavern, Altrincham, will be Tony Molyneux, a member of CAMRA's Pub Preservation Group. Along with many thousands of pub goers, Tony is deeply concerned about threats to the survival of traditional pubs. These threats include demolition following compulsory purchase; insensitive 'modernisation' or 'improvement' schemes and loss of the public bar. If you are concerned about the future of your local as you know it, or have opinions to express on pubs that have already changed, this is the meeting to attend. All are welcome. In fact the Victoria itself is the subject of much rumour since there are plans to build on land immediately behind the pub (a leisure centre) and removal of the Vic would make such a development easier. No doubt Bass North West would be quite happy to see the demolition of an old building with the chance of a more modern and bigger pub in the new complex and bang goes another good, traditional, local. All of this is pure conjecture, but it is interesting to note that the brewery are not prepared to commit themselves to any substantial improvements to the bar area because of the pub's uncertain future. Representatives of the planning department of the local council and of Bass NW have also been invited to the meeting.

Mick Rottenbury

RAIL ALE (4)

Handpumped Lees bitter has joined Boddingtons bitter at Manchester Victoria Station. There is as yet no real ale at Piccadilly Station, but the Coach & Horses nearby has extended its range of handpumped beers. Now available are: Tetleys mild and bitter, Boddingtons bitter, Pollards bitter and Pollards mild; Bass appears occasionally.

Leo King

THE GREAT DEBATE

So, farewell then
Rupert Periwinkle
You of the epicurean palate
No more Ophelia, Laetitia
Agrippa (deceased)
Periwinkle, a strange name
A crustacean isn't it?
Keith's mum used to frequent
the Rat and Handbag

E J Thribb (17)



From the dowager Lady Periwinkle

Dear Sir,

I'm writing in the hope that you'll take our Rupert back. Since you gave him the push he's not been hisself. He's come back down here to Wealthshire and just spends his time chucking bricks at t'lions all day. He's not interested in nowt no more, dwarfs, beer, dressing up in frocks - nothing. All his fancy friends have left him be and I'm feared he'll end up in t'cut with his throat cut if he don't get back to his writing. He's promised he won't write owt daft no more if you let him back. He's really sorry he's upset folk like and he'd never ever do it again if only he got his job back. I hope you have it in your heart to give our Rupert one more chance.

Bertha Periwinkle

Dear Sir,

The disappearance of Rupert Periwinkle some weeks ago gives more weight to the theory that he is the Mole and the fifth man in the Burgess, Maclean, Philby and Blunt affair. New evidence is turning up daily, and the recent discovery of a photo of him standing between Kosygin and the Vladivar Rep at the '76 May Day Parade in Red Square seems conclusive. It is also possible that he was the mysterious go-between, codename 'Shortarse', who obtained the export licences for Drabs and Boringsods at the recent Volga Boatmen's Narrow Boat Festival and Dirge. Before he disappeared he was seen with a copy of Real Ale in the Urals.

Yours, M

Dear Sir,

It really is too bad. First no 'Times', then no 'ITV' and now no 'Rupert Periwinkle'.

Gad Sir, I didn't fight in two world wars, and even if I had done it wouldn't have been so that I could read articles about filthy kraut lager festivals or the keg pubs and chip shops of Grotley-on-Sea in your scurrillous rag.

The young people of this country just don't realise the debt we all owe to the likes of Rupert. I mean, who got the bloody Campaign off the ground in Grotley anyway? Have they forgotten the sacrifices made by Rupert and his gallant crew in their fight to convert the Dockers Wedge from fizz in the first place. Agrippa, for one, was never the same again. And who was it who, single handed, masterminded the campaign to prevent the Gungesmealers Arms from being turned into some poofy wine bar.

No Sir, unless Rupert is reinstated I shall have no alternative. And failing that I shall cancel my subscription to your paper and be forced to read the 'Grotneys Gazette' instead.

Yours, Lt-Col 'Dipsy' Clutchfeatheringhaugh
(deceased)

PS. I hear from my good friend Sir Josiah Drab that he intends to ban the sale of What's Doing in all his pubs until Rupert returns. Damn good show too!

Dear Sir,

I wish to complain in the strongest terms about the decision to dispense with the Rupert Periwinkle column. In my experience this is by far the most popular feature in What's Doing. Everybody I know who buys the magazine turns immediately to his page. Moreover, it is probably not generally known that apart from his many other obvious talents, this man is endowed with the gift of prophesy; I refer of course to the present condition of the Noble Robin (may he be granted a speedy recovery) which was foreseen with such accuracy by R Periwinkle in recent months. I urge you to reconsider your unfortunate decision.

Yours, P Cash

NEW HANDS ON THE PUMPS

Three real ale pubs in the Trafford & Hulme branch area have recently changed landlords. Mick Lancaster left the Moss Trooper (Wilsons), Moss Lane, Timperley for the Crown in Nantwich and has been replaced by Brian Redshaw, who has been working 'relief' for Wilsons for 16 months after spells at the Hotel Piccadilly and Pinewood Hotel, Handforth. Brian is very keen on traditional beer and catering. One of his aims is to provide a varied and reasonably priced lunchtime menu. He would also like the 'concert' room brought more into use so if you have any ideas for celebrity lectures, live entertainments or inter-branch indoor hockey matches, get in touch!

Another Wilsons pub, the Axe and Cleaver in Altrincham, came under new management in November when Joe and Jean Croly took over from Mr & Mrs Thorpe, who left for the Good Companion at Holmes Chapel.

The third change that we know of was the arrival of William Rigby on October 8th at the Jolly Butcher (Lees), Petersfield Drive, Baguley. We wish them all success. Change of a different nature took place at another Lees outlet, the Park on Sledmoor Road, Wythenshawe. At the request of the landlord, five pairs of handpumps were installed in early October with the result that beer sales increased dramatically. The beer is, of course, the same as it always has been since the opening of the pub in 1965 and of a sufficiently high quality to merit the inclusion of the Park in the national Good Beer Guide each year. Be that as it may, the locals reckon their pint tastes even better since the arrival of the pumps.

Mick Rottenbury

McEWANS IN STOCKPORT

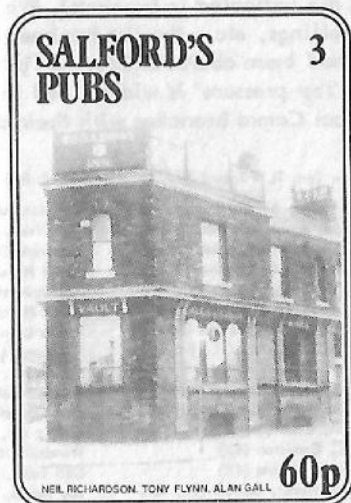
The bar at the Rudyard Hotel, Wellington Road North, Stockport, is selling McEwans 80/-

Humphrey Higgins

BOOK OF THE MONTH

The final part of the Richardson, Flynn and Gall trilogy about the pubs and breweries of the old City of Salford is out this month. This volume covers the Adelphi, Brunswick, Weaste and Broughton districts and what was once the city's biggest brewery, Groves & Whitnall. There is an article based on the earliest known licensing records of the city and one on the scandalous destruction of pubs in the last twenty years. The book is illustrated with many hitherto unpublished old photographs and engravings.

'Salford's Pubs No 3' is available from Alan Gall, 61 Romney Street, Salford 6, for 75p including postage.



THEY'RE STILL AT IT

Tetleys have applied for planning permission to change the use of the Bradford Arms, Ashton New Road, Bradford, from licensed premises to light industry.

FREE HOUSE CHANGES

The John Bull, New Brown Street, no longer sells Pollards. The beers on sale are now Wilsons and Whitbread. Not real ale. The St Anns Tavern, St Anns Square, has had a variety of beers recently - Tetleys, Thwaites and Winkles. The Whitbread Special Cask seems to have gone.

Leo King

NEW LION KEEPER

Tom Dunnett is the new licensee of the Red Lion on Chapel Street in Salford. Work has already begun on redecorating and renovating what is one of Salford's oldest pubs. Although the Red Lion may eventually be threatened by a road scheme, it should have several years of useful life remaining, serving cask Wilsons beers.

THE GAME OF THE NAME

The Cat, Nadgers, Halligans, Rutters, The Red House, The Showboat and Linleys are all nicknames for Swinton pubs. Although pub nicknames are common, few areas can boast as many as Swinton.

CASK BASS

This list of pubs in the Bass North West trading area comes hot from the brewery offices. All these pubs take, or are equipped to take, cask beer (the different brews are indicated in brackets). We apologise in advance for any vague addresses, mis-spellings, etc - the list has been transcribed from a computer print-out which itself had been abbreviated. The list is no guarantee of real ale as Camra defines it, as 'top pressure' is widely used in Bass houses. Readers are invited to contact the local Camra branches with their comments.

BX = Brew Ten; TL = Toby Light; 4X = Best Mild; BXI = Brew Eleven; MBM = M&B Mild

- | | | |
|---|--|---|
| Pheasant Hotel, Bassenthwaite (Bass) | Standard Mower, Leigh (BX, 4X) | New Inn, Nelson (BX, 4X) |
| White Lion, Ambleside (Bass) | Yew Tree, Boothstown (BX, 4X) | Old Duke, Burnley (BX) |
| Langdales Hotel, Ambleside (Bass) | Warwick Castle, Liverpool 1 (BX) | Pendle Inn, Burnley (BX) |
| Black Swan, Kirkby Stephen (Bass) | Eagle Hotel, Liverpool 1 (BX, 4X) | Queens Hotel, Burnley (BX) |
| Swan Hotel, Ulverston (Bass) | Wheatheaf, Atherton (Bass) | Prince of Wales, Nelson (BX) |
| Drunken Duck, Ambleside (Bass) | Kings Head, Atherton (4X) | Reindeer Hotel, Burnley (BX) |
| Sun Hotel, Kirkby Lonsdale (Bass) | White Lion, Leigh (Bass) | Royal Butterfly, Burnley (BX) |
| Miners Arms, Stainton (TL, Bass) | Spinners, Leigh (4X) | Stanley Hotel, Burnley (BX) |
| Kings Arms, Egremont (BX, 4X, Bass) | Shepherds, Lowton (Bass) | Turf Hotel, Burnley (BX) |
| Cavendish Arms, Carrmell (Bass) | Royal Hotel, Atherton (Bass) | Wheatheaf Inn, Burnley (BX) |
| Commercial, Kirkby in Furness (TL, 4X) | No 3 Hotel, Blackpool (BX, 4X, Bass) | White Swan Hotel, Burnley (4X, Bass) |
| Engine Inn, Cork (4X, Bass) | Rabbit Inn, Southport (BX, 4X, Bass) | Woodman Inn, Burnley (BX, 4X) |
| Sun Hotel, Coniston (4X) | Windmill Hotel, Blackpool (BX, 4X) | Old Sparrowhawk, Burnley (BX, 4X, Bass) |
| Frirs Hotel, Barrow (4X) | Old Toby, Ashurst (BX, 4X) | Prince Albert, Burnley (BX) |
| Washington Hotel, Barrow (TL, 4X) | Bay Horse, Formby (BX, Bass) | Wellington Hotel, Burnley (BX) |
| Periscope, Barrow (TL, 4X) | Hightown Hotel, Liverpool (Bass) | Empress Bar, Burnley (BX) |
| Steelworks Hotel, Barrow (TL, 4X) | Houghton Arms, Southport (Bass) | New Albion Hotel, Burnley (BX, Bass) |
| Bay Horse, Barrow (TL, 4X) | Railway Hotel, Leyland (BX) | Crown Hotel, Colne (4X, BB) |
| Tally Ho, Barrow (BX, 4X) | Ship Inn, Southport (BX, 4X, Bass) | Commercial Hotel, Colne (BX, 4X) |
| Brewery Inn, Barrow (TL, 4X) | Grosvenor Hotel, Blackpool (Bass) | Alma Inn, Burnley (BX, 4X) |
| Bird in Hand, Ulverston (BX, 4X) | Alison Arms, Appley Bridge (4X) | Coal Clough, Burnley (BX) |
| Bridge Inn, Dalton in Furness (TL, 4X) | Masons Arms, Southport (BX, 4X) | Cotton Tree, Colne (BX, 4X) |
| Brown Cow, Dalton (TL, 4X, Bass) | Derby Arms, Kirkham (4X) | Derby Arms, Colne (BX, 4X) |
| Crystal Palace Hotel, Barrow (TL, 4X) | Royal Oak, Preston (Bass) | Fleece Inn, Burnley (BX) |
| Concle Inn, Barrow (TL) | Prince of Wales, Southport (Bass) | General Havelock, Burnley (BX) |
| Devanshire Arms, Ulverston (4X) | Cobblers, Eccleston (Bass) | Gretna Green Hotel, Burnley (BX) |
| Devanshire Arms, Barrow (TL, 4X) | Coach & Horses, Liverpool 8 (4X) | Grey Mare, Burnley (BX) |
| Devanshire Arms, Dalton (TL, 4X) | Lord Seldon, Liverpool 7 (BX, 4X) | Hole in Wall, Colne (BX, 4X) |
| Hartington Hotel, Barrow (4X) | Elm House, Liverpool 6 (BX, 4X) | Marsden Cross Hotel, Brierfield (BX) |
| Harbour Hotel, Barrow (BX, 4X) | Grapes Hotel, Liverpool 6 (BX, 4X) | Mitre Hotel, Burnley (BX) |
| Market Tavern, Barrow (TL, 4X) | York Hotel, Liverpool 6 (Bass) | Nelson Hotel, Burnley (BX) |
| Prince of Wales, Barrow (TL, 4X) | White Star, Rainford Gdns (Bass) | Old Bridge Inn, Nelson (BX, 4X) |
| Queens Arms, Leaze (4X) | Greenhills, Liverpool 18 (Bass) | Railway Hotel, Nelson (BX) |
| Rams Head, Barrow (TL, 4X, Bass) | The Courts, Leigh (Bass) | Rock Hotel, Trawden (BX, 4X) |
| Regal Hotel, Barrow (TL, 4X) | The Woodcroft, Liverpool 15 (4X, Bass) | Victoria Hotel, Barrowford (BX, 4X) |
| Rose & Crown, Gleaston (TL, 4X) | Sefton Arms, Liverpool 15 (BX, 4X) | Waterloo Hotel, Burnley (BX) |
| Swan Inn, Barrow (TL, 4X) | Railway Inn, Liverpool 15 (BX, 4X) | White Bear Inn, Burnley (BX, Bass) |
| Shi p Inn, Roose, Barrow (TL, 4X) | Duke of York, Burnley (BX) | White Walls Inn, Colne (BX, 4X) |
| Sandgate Hotel, Barrow (BX, TL, 4X) | General Gordon, Nelson (BX) | Woodtop Inn, Burnley (BX, 4X) |
| Theatre Hotel, Barrow (TL, 4X) | Adelphi Hotel, Burnley (BX) | North Valley, Colne (BX, 4X) |
| White Horse, Dalton (TL, 4X, Bass) | Bay Horse, Nelson (BX) | Bowling Green, Burnley (BX) |
| White Lion, Barrow (TL, 4X) | Cattle Market, Burnley (BX, Bass) | Rose & Crown, Burnley (BX) |
| Wellington, Barrow (TL, 4X) | Coach & Horses, Burnley (BX, 4X) | Kings Head, Colne (BX, 4X) |
| Railway Arms, Lindal (TL, 4X) | Coachmakers, Burnley (BX) | Boars Head, Newchurch (BX, 4X) |
| Ambrose Hotel, Barrow (TL, 4X) | Commercial, Burnley (BX) | Stag Inn, Church (BX, 4X) |
| Castle House, Walney Island (TL, 4X) | Corporation Hotel, Burnley (BX) | Alma Inn, Padiham (BX, Bass) |
| Cliffon Arms, Blackpool (TL) | Craven Heifer, Burnley (BX, Bass) | Asworth Arms, Cloughfold (BX, 4X) |
| Saddle Inn, Blackpool (BX, 4X, Bass) | Engineers Arms, Nelson (BX, 4X) | Bay Horse, Worsthorne (BX) |
| Queens Hotel, Poulton (BX, 4X) | Fighting Cock, Cliviger (BX) | Bridge Inn, Church (BX, 4X) |
| River Wyre Hotel, Poulton (4X) | Foresters Arms, Burnley (BX) | Bridge Inn, Burnley (BX) |
| Palatine Wine Bar, Morecambe (4X, Bass) | Harpers Inn, Fence (BX) | Bridge Inn, Ewood Bridge (4X) |
| Durban Hotel, Cleveleys (Bass) | Hole in the Wall, Foulridge (BX, 4X) | Britannia Inn, Padiham (BX, 4X) |

Broadway, Accrington (BX)
 Buck Inn, Rossendale (BX, 4X)
 Commercial, Bacup (BX, 4X)
 Commercial, Rossendale (BX, 4X)
 Deepfield Inn, Bacup (BX, 4X)
 Free Gardeners, Padiham (BX, 4X)
 George & Dragon, Bacup (BX, 4X)
 Gordon Lennox Arms, Cliviger (BX)
 Hare & Hounds, Burnley (BX)
 Imperial Hotel, Accrington (BX, 4X)
 Irwell Hotel, Bacup (BX, 4X)
 New Masons Arms, Rossendale (BX, 4X)
 Masons Arms, Waterfoot (BX, 4X)
 The Jester, Rossendale (BX, 4X)
 Plane Tree Inn, Turn (BX, 4X)
 Rams Head, Rawtenstall (BX, 4X)
 Roebuck Hotel, Haslingden (BX, 4X)
 Rose & Crown, Rossendale (BX, 4X)
 Wellington Hotel, Bacup (BX, 4X)
 Wellington & Britannia, Bacup (BX, 4X)
 Jolly Sailor, Waterfoot (BX, 4X)
 Ram Inn, Cliviger (BX, 4X, Bass)
 Fountain Inn, Accrington Rd (4X, Bass)
 Dog Inn, Blackburn (BX, 4X, Bass)
 Market Hotel, Bacup (BX, 4X)
 Grand Hotel, Manchester (Bass)
 Midway, Stockport (Bass)
 Masonic Arms, Bollington (4X)
 Old Hall Inn, Chinley (Bass)
 Fleece Inn, Mossley (TL)
 Prince of Wales, Milltown (4X)
 Bulls Head, Old Glossop (TL)
 Bee Hive, Glossop (TL, Bass)
 Soldier Dick, Furness Vale (TL)
 King William IV, Newton, Hyde (TL)
 Rose & Crown, Glossop (TL)
 Bank Cottage, Hyde (TL, 4X)
 Norfolk Arms, Glossop (TL)
 Queens Arms, Old Glossop (TL)
 Howard Arms, Glossop (TL, Bass)
 Woolley Bridge Inn, Hallingworth (TL)
 Bulls Head, Grains Bar (BX, TL)
 Fleece Inn, Glossop (TL)
 Church Inn, Tintwistle (TL, Bass)
 Victoria Inn, Hadfield (TL)
 Pear Tree, Hadfield (TL)
 Royal Oak, Hollingworth (TL)
 Victoria Inn, Glossop (TL)
 Moorside Hotel, Oldham (TL)
 Commercial Hotel, Mossley (TL)
 Duke of Sussex, Newton, Hyde (TL)
 Globe Inn, Glossop (TL)
 Roebuck Inn, Glossop (TL)
 Queen Adelaide, Hyde (4X)
 Junction Inn, Glossop (TL)
 New Butchers Arms, Mossley (TL)
 Cottage Inn, Manchester (BX, TL)
 Green Dragon, Mill Lane (BX, 4X, Bass)
 Horseshoe Inn, Salford 7 (BX, 4X)
 Lloyds Arms, Manchester (BX, 4X)
 Old King, Stockport (BX, 4X)
 Railway, W Gorton (TL)
 Victoria Tavern, Altrincham (4X, Bass)
 Abbey Hey Hotel, Gorton (4X)
 Church Inn, Manchester 11 (4X)
 Jolly Carter, Droylsden (4X)
 Mechanics Arms, Audenshaw (TL)
 Grey Horse, Romiley (TL)
 Railway Inn, Woodley (TL)
 Royal Oak, Pendlebury (4X, Bass)
 Butchers Arms, Droylsden (4X)
 Jolly Sailor, Macclesfield (Bass)
 Vale Inn, Bollington (BX, 4X)
 Nags Head, Bollington (Bass)
 Town Hall Tavern, M/cr (Bass)
 Dyers Arms, Rochdale (4X)
 Drake Hotel, Rochdale (4X)
 Directors Arms, Castleton (BX, 4X)
 Gale Inn, Castleton (4X)
 George & Dragon, Rochdale (4X)
 Golden Ball, Rochdale (4X)
 Half Way House, Rochdale (4X)
 The Gallows, Milnrow (4X)
 Huntsman Inn, Littleborough (BX, 4X)
 New Inn, Dearnley (BX, 4X)
 Ox & Plough, Dearnley (BX, 4X)
 Rawstrons, Whitworth (4X)
 Cock & Magpie, Whitworth (BX, 4X)
 Railway Inn, Littleborough (BX, 4X)
 Reed Hotel, Rochdale (BX, 4X, Bass)
 Royal Oak, Littleborough (BX, 4X)
 Roys Arms, Rochdale (BX, 4X)
 Red Rose Inn, Rochdale (4X)
 Royal Exchange, Littleborough (4X)
 Summit Inn, Littleborough (BX, 4X)
 Top House, Castleton (4X)
 Waggon & Horses, Smallbridge (BX, 4X)
 Woolpack Inn, Smallbridge (4X)
 Woolpack, Rochdale (BX, 4X, Bass)
 Bridge Inn, Norden (4X)
 Bridge Inn, Rochdale (BX, 4X)
 Birches Hotel, Broadley (BX, 4X)
 Burns Tavern, Bamford (Bass)
 Hope & Anchor, Rayton (TL)
 Gale Inn, Rochdale (BX, 4X)
 Star Inn, Shaw (4X)
 Gale Inn, Littleborough (4X)
 Grapes Inn, Bamford (BX, 4X)
 Harrows Inn, Marland (TL, 4X)
 Industry Hotel, Rochdale (BX, 4X)
 Lark Inn, Rochdale (BX, 4X)
 Railway Hotel, Rochdale (BX, 4X)
 Cross Yates Inn, Rochdale (BX)
 Commercial, Castleton (4X)
 Bishop Bloize, Rochdale (BX, 4X)
 Mayfield Hotel, Rochdale (4X)
 General Havelock, Bolton (BX, 4X)
 Greyhound Inn, Bolton (4X)
 Newmarket Hotel, Heywood (4X)
 Old Boars Head, Bury (BX, 4X)
 Our House, Heywood (4X)
 Starkey Arms, Heywood (4X)
 Tanners Arms, Heywood (TL, 4X)
 Unity Brook, Kearsley (Bass)
 Whitbrook Inn, Middleton (4X)
 White Hart Inn, Birch (4X, Bass)
 Woolpack Hotel, Heywood (TL, 4X)
 Black Bull Hotel, Heywood (4X)
 Bricklayers Arms, Middleton (TL)
 Lord Clyde, Bolton (4X)
 Jolly Butcher, Bowlee (BX, 4X)
 New Inn, Radcliffe (BX, 4X)
 Brown Cow, Heywood (4X)
 Britannia Inn, Heywood (BX, 4X)
 Wellington Hotel, Radcliffe (4X)
 New Inn, Rochdale (BX, 4X)
 Oddfellows Arms, Bury (TL, 4X, Bass)
 Golden Fleece, Bury (BX, TL, 4X)
 Grapes Inn, Heyrod (4X)
 Hare & Hounds, Millbrook (4X)
 New Market Tavern, Dukinfield (TL)
 St Vincents Tavern, M/cr (BX)
 Wheatheaf, Manchester (4X)
 Black Diamond, Bardsley (BX, TL)
 Trafalgar Inn, Ashton u Lyne (TL)
 Horseshoe Inn, Oldham (TL)
 Stop & Rest, Stalybridge (TL)
 Ring o Bells, Ashton u Lyne (TL)
 Corporation Arms, A u L (TL)
 Robin Hood Inn, A u L (TL)
 Dog & Partridge, Stalybridge (TL, Bass)
 Greyhound, A u L (TL)
 Wharf Tavern, Stalybridge (TL)
 Sun Inn, Failsworth (4X)
 White Horse Inn, A u L (TL)
 Feathers, Stalybridge (TL)
 Cambridge Inn, A u L (TL)
 Waggon & Horses, A u L (TL)
 Burton Arms, Manchester (4X, Bass)
 Red Lion, A u L (TL)
 Freemasons Arms, Stalybridge (TL)
 Park Hotel, Dukinfield (TL)
 Star Inn, A u L (TL)
 Warrington Arms, A u L (TL)
 Bowling Green Hotel A u L (TL)
 Pineapple Inn, Stockport Rd (TL)
 Hop Pole, A u L (Bass)
 Hare & Hounds, Bower Fold (TL, Bass)
 Oxford Inn, A u L (TL)
 Gardeners Arms, A u L (TL)
 Brinsop Arms, Westhoughton (BX, 4X, Bass)
 Apethorn, Knott La, Hyde (Bass)
 Angel, Hyde Rd, Denton (Bass)
 Cross Keys, Eccles (4X, Bass)
 Wellington, Shambles M/cr (TL, Bass)
 Red Lion, Swinton (Bass)
 Corporation Arms, Ashton (TL)
 Derker Hotel, Oldham (BX, TL)
 Eight Bells, Failsworth (TL, 4X)
 Borough Arms, Blackburn (4X, Bass)
 Derby Hotel, Nelson (BX, 4X)
 Dugdale Arms, Burnley (BX, 4X)
 Greyhound, Brierfield (BX, 4X)
 Lane Ends, Burnley (BX, 4X)
 Talbot, Burnley (BX, Bass)
 Jolly Hatters, Colne (BX, 4X)
 White Horse, Padiham (BX, 4X)
 Morris Dancers, Colne (BX, 4X)
 Lord Howard, Rochdale (BX, 4X)
 Maypole, Pendleton (4X)
 Sportsmans, Chadderton (TL, 4X, Bass)
 Unicorn, Church St, M/cr (4X, Bass)
 Queens Arms, Rawtenstall (BX, 4X)
 Blossoms, Birkenhead (BX)
 Letters, Birkenhead (Bass)
 Hotel Victoria, New Brighton (Bass)
 McCullochs Pub, Wallasey (BX, 4X, Bass)
 Spital Vaults, Chester (BX, 4X)
 Blossoms Hotel, Chester (BX)
 Foresters Arms, Kelsall (4X, Bass)
 Royal Oak, Tarporley (BX, 4X)
 Dysart Arms, Bunbury (BX, 4X)
 Bull, Shocklach, Chesh. (Bass)
 Post House, Chester (Bass)
 Glynn Arms, Caergwrle (Bass)
 White Lion, Glanrafon (Bass, MBM)
 White Horse, Rhyl (Bass)
 Bagillt Arms, Bagillt (Bass, MBM)
 Red Lion, Wrexham (Bass)
 Douglas Arms, Bethesda (MBM, BXI)



- Gwydr Hotel, Betws y Coed (Bass)
 Castle Hotel, Bangor (Bass)
 Stag Hotel, Abergale (Bass)
 Harp Inn, Bangor (Bass)
 White Lion, Bangor (Bass, BXI)
 Castle, Conway (Bass)
 Griffin, Penrhyndeudreath (MBM, BXI)
 Oakley Arms, Merioneth (Bass)
 Lion Hotel, Barmouth (Bass)
 Grapes Hotel, Maentwrog (Bass, MBM, BXI)
 Australia Inn, Portmadoc (Bass)
 Castle, Pwllheli (Bass)
 Black Bay, Caernarvon (Bass)
 Ye Old Bulls Head, Beaumaris (Bass)
 Ye Old Vigour, Anglesey (Bass)
 Victoria Hotel, Anglesey (Bass)
 Prince of Wales, Llanberis (BXI)
 Parciay Arms, Marianglas (Bass)
 Brandonw Arms, Llanfrothen (MBM, BXI)
 Halfway House, Prenton (BX, 4X)
 Black Horse, Heswall (BX, 4X, Bass)
 Tower, Wallasey (4X)
 Rake Hotel, Easham (BX)
 Willows Hotel, Upton (BX, 4X)
 Magazine, Wallasey (Bass)
 Albion Hote, Chester (BX, Bass)
 Bee Hive, Hoole (BX, 4X)
 Ermine Hotel, Flookerbrook (BX, 4X)
 Golden Eagle, Chester (Bass)
 Royal Oak, Chester (Bass)
 Royal Oak, Hoole (BX, Bass)
 Woodlands Hotel, Whitby (BX, 4X)
 Ring a Bells, Christleton (Bass)
 Red House, Chester (Bass)
 Raven, Farndon, Chester (Bass)
 Beeston Castle, Ches (BX, 4X)
 Royal Oak, Kelsall (BX, 4X)
 Lorne Hotel, Rhyl (Bass, MBM)
 Alexandra, Rhyl (Bass, MBM)
 Crown Bard, Rhuddlan Rd (MBM, BXI)
 Hookes Smithy, St Asaph (Bass)
 George Hotel, Rhyl (MBM)
 Imperial Hotel, Rhyl (MBM)
 Anchor, Ruthin (Bass, MBM)
 Bryn Dias Hotel, St Asaph (Bass, MBM)
 Downing Arms, Bodfari (Bass)
 Leeswood Arms, Mold (Bass)
 Loggerheads, Llanferris (Bass)
 New Inn, Rhuddlan (Bass, MBM)
 Railway Hotel, Denbigh (Bass)
 Rising Sun, nr Mold (BXI)
 Windsor Vaults, Clwd (Bass, MBM)
 Liverpool Arms, Rhyl (Bass, MBM)
 Cayley Arms, Rhos on Sea (MBM, BXI)
 Central Hotel, Colwyn Bay (MBM, BXI)
 Glyn y Wedd Arms, Llanbedd (Bass)
 Park Hotel, Colwyn Bay (Bass, MBM)
 St Tudno Hotel, Llandudno (Bass, MBM)
 Ship Hotel, Rhos on Sea (MBM, BXI)
 Ship Hotel, Old Colwyn (MBM, BXI)
 Castle Hotel, Caernarvon (Bass, MBM)
 Liverpool Arms, Conway (Bass, MBM)
 Castle Hotel, Abergale (MBM)
 Albion Hotel, Llanwrst (MBM, BB)
 Alexandra Hotel, Caernarvon (Bass, MBM)
 George & Dragon, Conway (Bass)
 Liverpool Arms, Conway (Bass, MBM)
 Llanfair Arms, Llanfairfechan (Bass)
 Marine Hotel, Old Colwyn (Bass, MBM, BXI)
 Pen y Bryn Hotel, Llanwrst (MBM, BB)
 Ship Inn, Penmaenbach (Bass, MBM)
 Snowdon Hotel, Llandudno (Bass)
 Valentine Inn, Abergale (Bass, MBM)
 Acton Park Hotel, Wrexham (BX)
 Egerton Arms, Chester (BX, 4X, Bass)
 Ferry Hotel, Queensferry (4X)
 Golden Lion, Wrexham (Bass)
 Glynne Arms, Wrexham (BX, Bass)
 Robin Hood, Barrow (Bass)
 Hole in Wall, Liverpool (Bass)
 Dee Hotel, W Kirby (Bass)
 Park Hotel, Wigan (Bass)
 Raven Hotel, Wigan (Bass)
 Bowling Green, Wigan (Bass)
 Castle Hotel, Degeanwy (Bass)
 Egerton Arms, Stockport (Bass)
 Royal Oak, Chorlton cum Hardy (Bass)
 Seven Oaks, Manchester (Bass)
 Slip Inn, Lancaster (Bass)

NOT THE WÜRZBURG BEER FESTIVAL



Würzburger Tor



The Munich 'Oktoberfest' (November What's Doing) may be the biggest but it is by no means the only beer festival to be held in Germany. Last summer I went to spend a few days at the St Killian Beer Festival in Würzburg, a town in northern Bavaria.

Unbelievably, our tour company, Global of London (remember the name!) managed to deposit us in the city the week before the festival was to take place. Whilst this somewhat detracted from our enjoyment of the proceedings it did at least permit a more detailed study to be made of the everyday drinking habits of the average Würzburger.

According to Michael Jackson's 'World Guide to Beer', brewing in Würzburg was prohibited by the City Fathers 'for ever' in 1434. Imagine my surprise, therefore, to discover, at the Sellaiau terminus of the No 2 tram route the 'Würzburger Hofbräu' brewery. Ironically it was not possible for us to be given a guided tour as they were too busy brewing the special festival beer!

As part of a desperate attempt to placate an understandably argumentative tour party, Global (remember the name!) took us for a free meal at the brewery's beer garden. Here the courier made one of his many mistakes in promising unlimited free beer. The look on his face when we ordered litre steins was quite interesting and when one of our party informed him he was likely to drink 'at least' six or seven he nearly fainted. The bill, after only three hours, for a party of 33, came to DM1400 (£350). The beer itself was draught Pilsner served in stoneware steins direct from wooden barrels. Whilst to my mind not as tasty as the Münchener Oktoberfest beer it is far superior to English beer masquerading as 'Pilsner'.

In most 'Würzburger Hofbräu' and neighbouring local 'Wolfbräu' houses the only draught beer available was Pils, usually served by a controlled pressure system, using tall Scottish style 'fonts' which deliver the beer to the glass by utilising the natural CO₂ in the cask. As with most German beers, it is filtered. The usual measure is the half litre, which is as near a pint as makes no difference. We were able to find a number of pubs serving Pils direct from the (wooden) cask and when served in this way I found myself in agreement with Roger Hall (October 'What's Doing') in suggesting that Camra re-assess its attitude to Contin-

ental beer.

The only other draught beer type we came across was 'Altbeer'. This is a dark, top fermented beer similar in many ways to English mild ale. As with all German beer types it is served in its own distinctive glass, in this case a tall, cylindrical vessel containing 0.33litre. Two types were widely available. 'Hannen Alt' from Mönchengladbach, but also reputedly available in a Camra Investments pub in Cambridge, and 'Schlösser Alt' which comes from Düsseldorf, where the style originated. Again the controlled pressure dispense system is employed, and again I must state that this in no way makes the beer gassy or otherwise detracts from its acceptability.

Würzburg is certainly a pleasant place to visit. I believe the annual Beer Festival is some time after the first week in July. There is a fair selection of pubs, beer is cheap (about 40 a pint equivalent) and even cheaper for bottled beer in supermarkets (about 18p per pint), which again is nowhere near as fizzy as English bottled beer. Pubs are open all day until about 1.00am, which is when the hyper-efficient tram and bus system closes down for an hour or two. Yes, I enjoyed my short stay in the town, but I shall always remember Global of London as the tour company that couldn't organise a piss-up in a beer festival.

Prost! Jim Davies

BURTONWOOD BREWERY

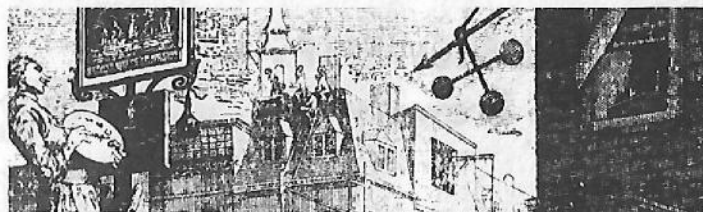
In 1867, James Forshaw, who had learned his brewing in Ormskirk, began brewing at a farmhouse in Burtonwood which had a good water supply. The brewery started with only 12 barrels. Before the First World War Burtonwood still only had 12 pubs but they had developed the club trade in the area under the leadership of James' nephew, Richard, who took over after James Forshaw's death in 1880. It was, however, Richard's son, Tom Forshaw, who built up the company in the pre-war years by developing motor transport and buying pubs in North Wales.



Burtonwood became a public company in 1964, although the major shareholding is still in the Forshaw family, which includes the Gilchrists. (Commander Gilchrist is the present chairman)

In recent years Burtonwood has expanded through the acquisition of J B Almond and Lassall & Sharmans breweries. Half of Burtonwood's output is in cask form, a figure which is not likely to increase because of the extent of free trade, but Burtonwood are firmly committed to cask beer in most of their tied houses.

Roger Hall



DEATH OF THE BEERHOUSE



The 1830 Beerhouse Act was introduced as an attempt to cut down the consumption of gin. The Act allowed a householder 'assessed to the poor rate' to retail beer from his own house on the payment of 2 guineas. In the years which followed there was understandably a vast increase in the number of premises serving beer, fuelled to some extent by population growth. The present century has seen a rapid decline in the number of beerhouse licences and few premises remain which are not allowed to serve wines and spirits.

The following table shows the decline of the beerhouse in local areas over the last few years:-

	MANCHESTER			SALFORD		
	All Tiquors	Beer	Wine & Cider	All Tiquors	Beer	Wine & Cider
1958	501	538	1	99	197	0
1968	777	58	1	217	33	0
1978	671	9	1	180	5	0

In the rest of Greater Manchester the picture is the same: In 1978 there were only 24 beerhouses (including premises licensed to sell beer and cider with or without wine)

Bolton 1; Eccles 2; Makerfield 3; Manchester 9; Oldham 2; Salford 5; South Tameside 1; Trafford 1.

Full circle! Who knows, we may need a new Hogarth to paint the evils of Gin Lane and the benefits of Beer Street to encourage a new Beerhouse Act - Next year is the 150th Anniversary and it would be a pity if no beerhouses remained at all.

Roger Hall

MANCHESTER BREWERIES No 13

Yates's Castle Brewery



John Smith's presence in this area is largely due to 'a merger of interests' which combined Smiths and the Barnsley Brewery Company with Yates's Castle Brewery Ltd in 1961. The magnet trade mark, used by Smiths since 1906, appeared outside the ex-Yates's pubs only to be replaced by the Courage cockerel when Smiths themselves became the object of a takeover.

According to local directories, Gatehouse and Yates founded the Castle Brewery shortly before 1877. Charles Gatehouse belonged to the Gatehouses of Birkenhead, a brewing family who later formed the West Cheshire Brewery Company. Charles and R G Gatehouse occupied a brewery at Tranmere, Birkenhead, after Aspinalls had vacated the building in 1865 to merge with Cooks Brewery and form the Birkenhead Brewery Company. The other partner at the Castle Brewery, William Yates, lived in Northwich. There is strong evidence to suggest that this was the same William Yates who, with George Jackson, formed the Lancaster brewers Yates & Jackson in 1878.

It would seem that the Gatehouse involvement ceased in 1888 with the formation of William Yates & Co Ltd. The Gatehouses had a further connection with the area, however. During the period 1888 - 1890, Gatehouse & Son occupied the Sandywell Brewery in Salford, vacated by George Clayton after he had sold out his business to Boddingtons.

The Yates's tied estate covered an area including Salford, Manchester, Birkenhead, Liverpool and Chester. In Chester they owned several pubs like the Town Hall Vaults, Princess Street (as Gatehouse & Yates) and the Brewers Arms, Foregate Street (as William Yates & Co).

Yates's Castle Brewery Ltd was registered on 20th October, 1896, with a purchase price of £172,725. By this time, the company controlled 175 fully-licensed houses and beerhouses. The years 1901 - 1925 must have been very difficult for Yates as they paid no dividends on the ordinary shares at all during this period. By 1928 they were able to pay 15% and in 1935, 15% with a bonus of 2½%.

The brewery stood on Ogden Street and William Street and might still have been in production today, except for the merger mania of the early 1960s.

Alan Gall

FULL HOUSE

By popular request, Trafford & Hulme's Christmas Social will again be held at the Carters Arms, Sale Moor, on December 27th. Food will be available and a pianist will endeavour to accompany the tuneless singing of Messrs Goode, Hurdle and company. All entertainers are welcome, no matter how little their talent - as long as they don't expect to get paid. One of the reasons for the choice of venue is the excellent range of Marstons beers; mild, bitter, Pedigree, Merrie Monk and Owd Rodger to complete the full house. Actually, if you drink 'mixed' you can have 15 pints of real ale without repeating yourself (sorry!) Mind you, if you start on Owd Rodger and Merrie Monk mixed you wouldn't be able to count to 15, let alone drink them.

Mick Rottenbury

TURN OF THE SCREW

The Cork & Screw, formerly the Beef & Barley, has changed its name yet again to the Shady Lady. Would anyone bold enough to enter let us know if cask beer is on sale yet?

STAY OF EXECUTION

The Red Cow, Albion Street, Salford, has been spared, for the time being. The pub will not be knocked down for GMC's road network until after August next year.

SALE ALE SETBACK

The hoped-for conversion to real ale of one of the bars in the revamped Sale Hotel (Wilsons), Marsland Road, Sale, has received a setback. At the time of writing it appears the brewery will still be supplying tank beer although the landlord is keen to have cask beer available to give his customers a choice. This really is a major disappointment as I only live round the corner!

Mick Rottenbury

POLY PUTS THE CASK ON

Manchester Polytechnic's Student Union bar has a 'Beer Appreciation Night' every Monday, providing about four different beers each week. Various real ales from all parts of the country - Morlands, Morrells, Hook Norton - as well as many local brews have been available in the last few months.

MOVING ON

The South Manchester Branch of CAMRA send good wishes to Carl and Maureen, who have now left the Golden Lion, Hillgate, Stockport, to take over another Burtonwood pub, the Alexandra at Hindley Green.

Dave Eckett

Real Ale Guides

The following publications are available from Roger Hall,
123 Hill Lane, Blackley, Manchester.

REAL ALE IN HIGH PEAK AND NORTH EAST CHESHIRE
- Including Marple, Hyde, Ashton, Audenshaw, Dukinfield,
Stalybridge, Mossley and Denton. 10p + s.a.e.

REAL ALE IN SOUTH MANCHESTER - Including Gorton,
Openshaw, Clayton, Didsbury, etc. 10p + s.a.e.

REAL ALE IN STOCKPORT - Including Hazel Grove,
Cheadle, Heaton Mersey etc. 10p + s.a.e.

***REAL ALE IN SALFORD** - Including Swinton, Eccles, Irlam
and Worsley. 150 pubs, maps, photographs. 25p + s.a.e.

REAL ALE IN ROCHDALE - Including Heywood, Milnrow, Littleborough and Middleton
10p + s.a.e.

****REAL ALE IN TRAFFORD AND HULME** - Including Altrincham, Sale, Urmston, Stretford,
etc. With maps. 10p + s.a.e.

*****REAL ALE IN CENTRAL MANCHESTER** - A comprehensive guide to real ale within 1
mile of St Peter's Square. 117 pubs, map illustrated. 30p + s.a.e.

REAL ALE IN OLDHAM - Including Failsworth, Royton, Chadderton, Shaw, Saddleworth,
etc. 10p + s.a.e.

REAL ALE IN BURY - Including Ramsbottom, Radcliffe, Tottington, Whitefield and
Prestwich. 10p + s.a.e.

REAL ALE IN MANCHESTER NORTH - Including the city centre, Ancoats, Collyhurst,
Moston, Newton Heath, Blackley, Cheetham, etc. 10p + s.a.e.

****REAL ALE IN CENTRAL AND NORTH CHESHIRE** - Including Warrington, Widnes,
Runcorn, Lymm, Frodsham, Northwich, Middlewich and Winsford 10p + s.a.e.

THE ROAD TO WIGAN BEER - Including Leigh, Atherton, Standish, Skelmersdale,
Newton, etc. Fully illustrated, maps. 35p + s.a.e.

REAL ALE IN GREATER GROTLEY - Including Grotley, Slumley, Smarmford and
Slutch, Poshton and Pseudley. 10p + s.a.e.

REAL ALE IN ST HELENS - Including Sutton, Peasley Cross, Thatto Heath, Moss Nook,
Eccleston, Parr, etc. 10p + s.a.e.

*updated 1979 ** Second Edition 1979 *** Third Edition 1979

Pub & Brewery Histories

The following publications are available from Alan Gall,
61 Romney Street, Salford 6.

SALFORD'S PUBS No 1 - Covering 'Hanky Park', Regent Road,
Cross Lane, Charlestown, Walker & Homfrays brewery, etc
Fully illustrated. 70p including postage

SALFORD'S PUBS No 2 - Covering Greengate, Chapel Street,
Islington, Ordsall, Threlfalls Brewery, brewery takeovers, etc.
Fully illustrated. 60p including postage

WIGAN'S PUBS No 1 - Covering the town centre, Aireys,
Oldfields, Albion breweries, the Newtown Brewery, etc.
Fully illustrated. 45p including postage



ESCAPE FROM SAN MIG

At 8.00pm on Sunday 16th December we welcome back Richard and Anna Greenhalgh on their 'summer holidays' from tropical exile in Papua New Guinea. Rick and Anna were active members of the South Manchester Branch of CAMRA, Rick being Area Organiser before his work took him to the land of head hunters and ice cold lager; San Miguel 'brownies' being his favourite drink over there. A recent taped message was full of longing for Holts, Robbies, etc, so as soon as flight 13A 931 has dumped its passengers at Ringway, two tanned figures will be scuttling for the Tatton Arms at Moss Nook. Rick has promised free ale to all his CAMRA friends that night. (By the way, Rick, what are L.B.F.M.s?

Mick Rottenbury



Branch Diary

NORTH MANCHESTER

Weds 19th Dec: Christmas Social - White Swan, Swinton. Guest Joe Goodwin (CAMRA Chairman) Buffet

Weds 2nd Jan: The Reverse 14 brew Pub Crawl. Just the thing to wash down the turkey and Christmas Pud. Eagle, Collier Street 7.00pm. Dutton, Park Street 8.00pm

Weds 9th Jan: Committee/Social. Railway (Holts) Newton Heath 8.00pm

Weds 16th Jan: Branch Meeting, White Swan, Swinton 8.00pm

Thurs 31 Jan: Trip to Burtonwood Brewery. 6.30 White Swan, Swinton

Contact: Roger Hall 740 7937

BOLTON

Thurs 13th Dec: Branch Meeting, Sweet Green Tavern, Crook Street 8.45pm

Fri 21st Dec: Pub Crawl: Falcon 7.00pm; Spread Eagle 7.30pm; Dog & Partridge 8.00pm; Swan 8.30pm; Prince William 9.00pm. The remainder of the crawl will be announced later

Weds 9th Jan: Visit to Robinsons Brewery. Coach from Bolton (Moor Lane) 6.30pm

TRAFFORD & HULME

Sun Dec 16th 12noon: Darts & Doms Social with S M/cr branch. Victoria, Stamford Street, Altrincham

Sun Dec 16th 8.00pm: Social with Papua New Guinea Branch. Tatton Arms, Trenchard Rd, off Ringway Rd, Moss Nook (see 'Escape From San Mig')

Thurs Dec 20th 8.00pm: Branch meeting. Railway, Ashley Road, Hale

Thurs Dec 27th 8.00pm: Social, Carters Arms, Northenden Road, Sale Moor (see 'Full House')

Thurs Jan 3rd 8.00pm Committee/Social Jolly Friar, Lloyd Street, Altrincham

Thurs Jan 17th 8.00pm: Branch Meeting, Victoria, Stamford Street, Altrincham
Speaker: Tony Molyneux (see 'Pub Preservation')

Contact: Mick Rottenbury 969 7013 (home)

SOUTH MANCHESTER

Thurs Dec 13th 8.00pm: Christmas Social. Hot Pot Supper & Folk Singing at the Gateway, Wilmslow Road, East Didsbury

Tues Dec 18th: Social at the Nursery (Hydes), Green Lane, Heaton Norris, Stockport. 8.00pm

Sat Dec 22nd: Christmas Crawl - Hillgate, Stockport. 14 pubs. Start 7.00pm at the Blossoms, Buxton Rd, 7.30 Wheatsheaf, Higher Hillgate, 8.00pm Royal Mortar

Thurs Jan 10th: Branch Meeting at the Gateway, 8.00pm

NB: Sunday Dec 16th, Darts & Dominoes Social with Trafford & Hulme branch
Contact: Humphrey Higgins 432 0059

ROCHDALE, OLDHAM & BURY

Tues 4th Dec: Committee Meeting, Rose of Lancaster (OB), Manchester Street, Oldham

Fri 14th Dec: Xmas Social, Waggon Inn (Burtonwood) Milnrow

Tues 18th Dec: Branch Meeting, White Swan (Robinsons), Huddersfield Rd, Oldham. Guest: Joe Goodwin, CAMRA Chairman

Tues 8th Jan: Branch Meeting, Stonemasons (Thwaites) Bury St, Heywood

Tues 22nd Jan: Committee Meeting, Woolpack (Bass) Birch St, Heywood

Contact: Steve Lawton 061 620 9239 (h) 061 236 4411 ext 7236 (w)

What's Doing

Contributions to the magazine are always needed. If you have any news of pubs opening, shutting, going back to traditional beer or going the other way, please get in touch with the editor, Neil Richardson, 51 Lime Street, Farnworth, Bolton. Farnworth 78138, 061 793 5329. Articles are always welcome.

COPY DATE for January Edition is Thurs 20th December

Subscriptions

If you want to be sure of getting What's Doing every month, why not subscribe? It costs £1.20 for six issues, postage paid. Fill in the form below and send it together with a cheque or postal order for £1.20 made out to 'What's Doing' to Roger Hall, 123 Hill Lane, Blackley, Manchester.

NAME _____

ADDRESS _____

Please send me the next six issues of What's Doing, starting with the _____ issue (state month). Signed _____

What is Real Ale?

CAMRA coined the term 'real ale' to describe beer brewed from traditional ingredients — malted barley, hops and yeast — kept in casks which allow it to continue 'working' in the pub cellar, and delivered to your glass by any method that does not involve the use of carbon dioxide.

More about the Campaign for Real Ale.

CAMRA is the only national organisation which exists specifically to speak for the beer-drinker and pub user. Except for a small staff in St Albans, CAMRA relies on voluntary effort, and members subscriptions, to promote and publicise traditional draught beer. The Campaign is piloted nationally by a democratically elected Executive, and 140 branches are its lifeblood at local level. Few parts of the country are without a CAMRA branch.

CAMRA tries to increase public awareness through such means as publications and beer exhibitions, and seeks to influence the brewing industry itself by making responsible and intelligent representations to the industry's bosses and the nation's legislators.

The Campaign is now accepted as one of Britain's foremost consumer and conservation bodies. Its views on a wide range of subjects connected with the brewing industry and the licensed trade are listened to seriously by the industry itself and by Government. CAMRA's growing concern with a whole range of legal and technical issues — with pricing policies, brewing technology, monopolies, the licensing laws, and consumer protection — reflect a mountain of effort by unpaid individuals.

The Campaign publishes a monthly newspaper — What's Brewing — which takes a broad and critical look at all sorts of developments in the world of beer and pubs, and keeps members closely informed. What's Brewing is sent free to every member. The annual Good Beer Guide, listing the best Real Ale pubs in the country, has become a national institution.

In 1976 CAMRA became a limited company. This status in no way inhibits the Campaign's activities as a voluntary organisation, and has been adopted with the sole purpose of putting CAMRA on a sounder legal footing.

Remember, most of CAMRA's activities cost money, and CAMRA relies on its members for financial support. Your help is needed now. If you do care about your pint and your pubs, join CAMRA. Then contact your local branch. They will be delighted to see you at their meetings, socials and on the trips they organise from time to time. They will also welcome your views, and your help in their local ventures.

Join Now!

Application for membership

I/We wish to become a member(s) of the Campaign for Real Ale Limited. I/We agree to abide by the Memorandum and Articles of Association of the campaign.

I enclose £4 (£6 Overseas) for full membership

We enclose £5 for husband and wife membership

or I/We enclose completed standing order authority

(Any additional amount will be welcomed as a donation).

☐
☐
☐

Application for Associateship

I wish to become an Associate of CAMRA Ltd.

I agree to abide by the aims of the organisation and enclose my fee of £1

☐

FULL NAME (Block capitals)

FULL POSTAL ADDRESS (Block capitals)

SIGNATURE..... DATE.....

Cheques should be made payable to Campaign for Real Ale Limited. Applications should be sent to Membership, CAMRA, 34 Alma Road, St Albans, Herts. AL1 3BW.

STANDING ORDER FORM (FOR FULL & HUSBAND AND WIFE MEMBERSHIP ONLY)

To (your Bank)

Please forward to Barclays Bank Ltd, 3 High St., St Albans (20-74-09) for the credit of CAMRA Limited subscription account, A/c No.50187887; now the sum of *£4/£5 and continue to pay this sum on the..... annually until further notice.

SIGNATURE..... DATE.....

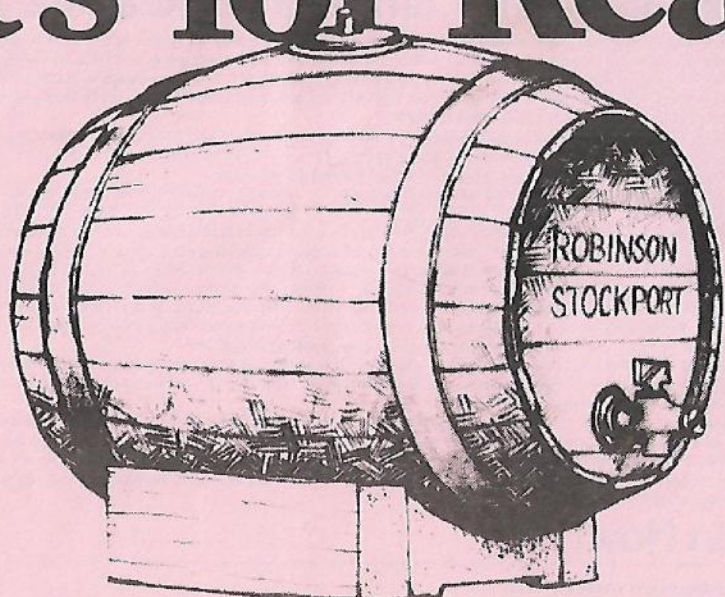
NAME (Block capitals)

BANK A/C NO. AND ADDRESS

*delete as appropriate



It's for Real



We, at Robinson's, think that what matters most about beer is its flavour. That's why we are still brewing beer the same way that we did a hundred years ago. Natural ingredients, the same time-honoured brewing ways, even on the same site - not many can say that!

And you can buy at least one, usually two and sometimes more of the traditional Ales listed here in any Robinson's pub within 100 miles of Stockport. Not many can make that sort of claim either.

Now you can have Real Ale at home for parties or just for your own enjoyment. Available in Firkins and Pins*, complete with tap, stillage and detailed instructions. You can order

from any Robinson's On or Off-Licence or Unicorn Wine Shops.

Always available from Unicorn Wine.

Old Tom Ale
Best Bitter Ale
Bitter Ale*
Best Mild Ale



Lower Hillgate, Stockport, (just by the Brewery) 061 480 6571. And its the cheapest way of buying beer. A little more trouble perhaps but we think you will agree with us that it is worth it.

There are deposits on the casks, stillages and taps, returnable in full when you bring them back. You can borrow glasses, paying only for those you break or fail to return providing you also make appropriate purchases of items to fill them.

We strongly recommend that you place your order as soon as possible for Christmas or New Year use.

It's Robinson's . . . for Real.

*Bitter Ale not available in Pins.

**When you buy any of these Robinson's Ales,
you are buying Traditional Draught Beer
-at its very best.**