

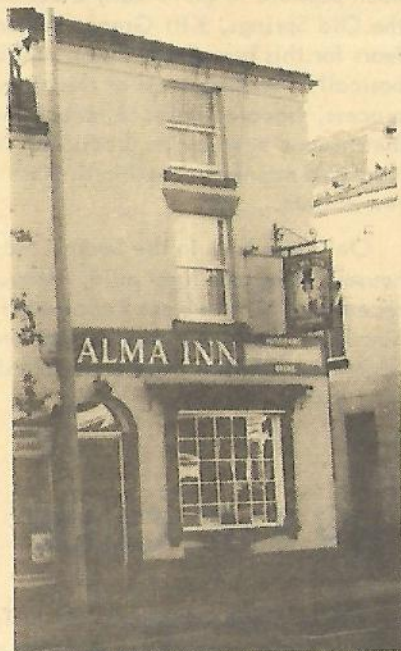
WHAT'S DOING



JAN
1981

THE MANCHESTER BEER DRINKER'S MONTHLY MAGAZINE

ALL'S WELL AT THE ALMA



Greenalls peculiar policy of giving the customer what he wants - fewer pubs and keg beer in the ones that are left - has meant a dramatic drop in the number of real ale Greenalls pubs in Bolton. However, the Alma, Bradshawgate, has always been a pleasant town centre pub selling good real ale. It featured for many years in the Good Beer Guide, when the landlord was Tom Boyle. Some months ago Greenalls refused to spend money on improving the living quarters and put the Alma on the market. Burtonwoods stepped in and spent some £13,000 on improvements, giving the small one-roomed pub a complete facelift, including four new handpumps and an interesting selection of old photographs of Bolton.

The best improvement was to bring back Tom Boyle and his wife Edna, who had moved to the Dog & Pheasant in Westhoughton and then left the pub trade for a short time. There is a good chance that the Alma will be appearing in the 1982 Good Beer Guide.

LAST OF THE LIGHT BRIGADE

Burtonwood have decided to stop producing their cask light mild, just as Greenalls and, more recently, Boddingtons have done. The brewery says that sales are "on such a small scale that its production has become quite uneconomic." Things might have been different with a little advertising - not necessarily extravagant TV campaigns such as those the brewers lavish on their ridiculous lagers - but a bit of point-of-sale information would have been useful. It has been possible to go in many a Burtonwood house offering cask light mild (like the Old Springs, Kitt Green, Wigan) and not even know it was there. CAMRA fears for this brew have in the past been allayed by the information that it is basically the same brew as the bitter which is fractioned off late in the brewing process, liquored down to reduce the gravity and fermented separately. However, Burtonwood now say its production has become uneconomic because demand is localised mainly in the North West Manchester area, where they claim to have too few outlets.

Only two pubs in the South Lanes area, containing 60 real ale Burtonwood houses, have sold light mild, although a keg version has appeared in one or two recently. This bears out Burtonwood's claim of too few outlets, or possibly shows how little they have done to promote this "excellent beer" (their description, with which few CAMRA members would disagree).

Brian Gleave

IN THE CLUB

Of 24 clubs surveyed so far in Trafford, real ale was found in nine outlets. This is fairly encouraging as many clubs are of a modern 'identikit' design and therefore cask beer is often impossible due to lack of cellar space. However, perhaps a few clubs could take a leaf out of Stretford Cricket Club's book - they have hardly any cellar space, yet excellent Matthew Brown bitter is available through handpump. The beer is kept behind the bar at feet level and with careful barstaff and ingenious pipework, the beer is a success. Other known real ale clubs are Ashton-on-Mersey RUFC (Marstons bitter, E), Sale CC, Hockey, Tennis & Old Salians RUFC (Bass Cask bitter, H), Sale Wardens Association (Hydes mild and bitter, E and Youngers Scotch bitter, H), Metrovicks RUFC (Thwaites mild and bitter, H), Stretford Trades & Labour Club, Sale (Boddingtons bitter, E) and Shell Carrington Club (Youngers Scotch bitter).

Anyone with news and views concerning the club trade in Trafford and Hulme should contact Steve Wilson, 21 Ravenstone Drive, Sale Tel 969 9635

WHAT'S DOING

NEWCASTLE NASTY

If the splash advert in the Manchester Evening News is anything to go by, it seems we can soon expect Scottish and Newcastle's new keg beer 'Newcastle Bitter' in Manchester.

If so, beware! In other parts of the country the same Newcastle Bitter is being served by handpumps. Until now the handpumps have only sprouted in free houses and the brewery (surprise, surprise) deny having any policy on having handpumps as the method of dispense for their fizzy stuff.

THAT NEW ROAD

What's Doing's mole in the GMC informs us that the "Manchester and Salford Inner Relief Route" is programmed for 1984 onwards and will cost £40,000,000.

THINK TANK

Last month Courage ran a publicity campaign in its 6,000 Courage and John (wash your mouth out) Smiths pubs in England and Wales. 1½ million beermats proclaimed, "Think before you drink before you drive". "Think before you drink Courage" may have been more appropriate.

MILD BILL

The Prince William, Bolton's only Boddingtons pub (for the time being) now sells mild. The beer has been put on by the landlord for the benefit of some of his mild-drinking older customers.

IS THIS A RECORD?

Word has it that the landlord at the Ship, Millgate, Wigan, has banned some 200 people from his pub (a gentleman of the Church Street, Eccles, school, no doubt). The Ship has been given a good clearing out and Wigan's colourful characters have given way to a younger clientele. Discos and an excruciatingly loud juke box are now the attractions.

THE PRICE OF A PINT

Last month "Mancunian" wrote to say his pint of Pedigree cost him 52p at Corbieres Wine Bar, Manchester. Corbieres say their Pedigree is 48p; it's the lager that costs 52p.



WORTHINGTON WICKETS

The Worthington Hotel, Market Street, Hindley, has had handpumps and cellar refrigeration installed, to the delight of local drinkers. The Worthington is well worth a visit for its excellent lunchtime food. The traditional Sunday Lunch, at £1.75, is hard to beat anywhere, with a choice of roast meats and veg, starter, sweet and coffee. The weekday buffet lunches also enjoy a wide reputation for price and quality.

CLIFTON CHANGE

The Clifton Arms on Newport Street, Bolton, has been done up by Tetleys. The pub has been "Walkerised" on the outside and inside the bar has been moved and the pub decorated. Handpumps remain and it should reopen soon.

WILSONS CHOICE

Wilsons brought variety and interest back to their pubs in late November, when their draymen went on strike for a fortnight. In Bury and Rossendale most pubs opted for Thwaites and Tetleys, but the odd few, such as the Clarence, Helmshore, the Commercial, Haslingden and the Trafalgar in Bury, sold Hartleys. The most unusual visitors were Higsons mild and bitter at the Hargreaves Arms, Lumb in Rossendale. The Swan in Bacup was noted still selling Wilsons mild on the day the strike ended.

PORCELAIN PUMPS

Burtonwoods have recently been installing electric metered pumps triggered by porcelain imitation handpumps (complete with hunting scene), standing around 9 inches high. They have appeared in the renovated Moorgate, Scot

Lane, Aspull, the Poacher (formerly Greenalls' Scot Lane Inn), Blackrod, and the Cherry Gardens, Wigan Lane, Wigan. Thus far only cask beer has been spotted served via these pumps, but vigilance is called for!

The Cherry Gardens now sells traditional mild after years on the fizzy stuff, and we wish the new landlord and his good lady (previously selling Greenalls in the Lancashire Union, Ince) well in their new pub.

MOORHOUSES MOVE

Moorhouses bitter has been taken off at the Whitcuff, Townsendfold, Rawtenstall, leaving the pub with no cask beer, Boddingtons having moved out about a month previously. It is believed that Taylors are keen to move in.

HANDPUMPS FOR GREENALLS

The Blue Bell, Warrington town centre, has recently been modernised and altered by Greenalls, who have also introduced new handpumps to serve the mild and bitter.



ECCLES EMPORIUM

Whitbread are turning the Duke of York, Church Street, Eccles, into a 'free house' in February. There will be a choice of five or so amber nectars from the wood, including Chesters mild and bitter.

The name of the Crewe pub where Chesters mild was launched last month is the Bitter End, not, as the late BLO had us believe, the Last Pint (daft sod).

BREWERY TAKEOVER

Hutchinsons Leisure Group, owners of the Sparrowhawk, Burnley, were so pleased with the sales of Moorhouses beer at the pub that they have decided to buy the brewery. The Group, which own some 53 pubs and clubs, are to take on more brewery staff and increase output threefold.

BLEEDING MISTAKE

Mick sends his apologies - the landlord of the Bleeding Wolf, Ashley Road, Hale, is very much in favour of real ale, and Whitbread Chesters bitter is selling well (about 10 x 18 gallon barrels a week). It has also brought new custom into the pub, which has a large spirits trade and offers meals five lunch-times and seven evenings a week. Well, whoever I spoke to on the phone when Chesters bitter was only a strong rumour SAID he was the landlord!



THE MELVILLE RINGS THE CHANGES

The Trafford & Hulme branch welcome Colin and Hazel Gower, who took on the managership of the Melville in Stretford on 8th December. Colin, an ex-rugger player for Workington, has come from the stewardship of a club in Southport to try his hand at looking after and selling real ale (Holts).

GET THE HABIT

Merrie Monk is in danger of disappearing from the Carters Arms, Sale Moor, due to falling sales. Is there an artist (other than the piss variety) who can design a point of dispense display card/model or poster? At present there is nothing to advertise its presence. Meanwhile try a pint or eight to keep it going.

WHITBREAD CASK GOES

Whitbread Special Cask vanished from the Duckworth Arms, Shuttleworth, Bury, the week before Chesters Best Bitter was introduced. The beer had been available since the test market was launched two years ago and the timing of the withdrawal leaves a lot to be desired. However, most of the pub's staff had been noticeably reluctant to serve the beer, presumably due to the poor operating characteristics of the handpump.

Special Cask has also departed from the Duke of Wellington, a free house on Grane Road, Helmshore. Its replacement in this now all-keg pub would seem to be the new Scottish & Newcastle "Newcastle Bitter", which has been likened to a fizzy, filtered version of the River Tyne.

RIGHT SAID FRED

That awful television advert for Greenall Whitley, which shows somebody demolishing a chimney, is particularly apt when you think about it. Quite often Greenalls do a lifelike imitation of demolition men. News came this month of their latest bout of bad taste - they announced they were closing the Prince of Wales, Warrington, a few weeks before Christmas, springing the news on licensee and customers who had laid other plans, such as a pensioners' Christmas party. Fortunately someone at Greenalls had the good grace to postpone the closure until the New Year. Greenalls reason is typical. "The Environmental Health people have been pressing us for some time to bring the house up to standard." These are the people who spend thousands of pounds each year vandalising their houses, knocking walls down, throwing up plastic and formica all over the place and they can't see their way to building a new lavatory at the Prince of Wales.

The pub has now been sold to the Warrington Liberal Club, a somewhat smaller organisation than Greenall Whitley, but obviously with enough cash to modernise the toilets. The beer will, of course, be Greenalls.

PUMP PREFERENCES

The Urmston Hotel (Wilsons), Stretford Road, Urmston, now uses handpumped dispense for the cask bitter and mild (previously pillar taps were used) but the King William IV, Manchester Road, Partington, has gone electric, though the beer (Marstons mild and bitter) is still real and just as good as ever. Beware keg mild in the 'cocktail' bar!

SAMS SESSION

The landlord of the Windmill (Sam Smiths), Carrington, complains that he doesn't see enough CAMRA members in his pub, despite the excellence of the cask Old Brewery Bitter. We contacted Rentabeerbore and await developments. Trafford & Hulme are having a Social there on January 29th to put on a show of strength.

HILLGATE HEARTACHE

Whilst it is stretching a point to say Stockport's Hillgate Crawl will never be the same again, it has nevertheless suffered a blow. Sadly, the Gladstone (Tetleys) has recently stopped selling mild.



LION LOSSES

Matthew Brown have bought the Conquering Hero in Ince in Makerfield (see Nov WD). The pub reopened in December with the usual range of Lion container beers. At the same time they sold off one of their few remaining houses selling cask beer - the Plough and Harrow, Coppull Moor.

So keen were Thwaites to move into the Wigan area that they nipped in and bought it before the planned auction could take place. Not surprisingly, the new owners will be supplying traditional beer. Strange how such close brewing neighbours should have such varying policies on real ale.

Contributors: John Dickinson, Roy Walker, Don Chattwood, Bert Kerks, "Puffing Billy", Brian Gleave, Ian Ogden, Dave Eckett, Alan Jarratt, Jim Davies, Mick Rottenbury

HEAD BREWER MOVES NORTH

Mr Peter Cole, Head Brewer and director of J W Lees brewery, Middleton Junction, is shortly to take over as Managing Director of Yates & Jacksons brewery, Lancaster.

Last month at R O B's Christmas Social, Mr Cole was presented with a CAMRA engraved mirror as a token of the branch's appreciation for his efforts in the furtherance of the real ale cause. His arrival at Lees some twelve years ago marked the turning point in the brewery's fortunes and it must be said that prior to this, 'John Willies' did not have a good reputation amongst local drinkers.

Mr Cole's replacement at the brewery will take over next month. Rumours are that he is an ex-Vaux man. What's that you say, a fleet of John Willie tankers?

Steve Lawton

PUB OF THE MONTH



Trafford & Hulme's Pub of the Month for January is the Malt Shovels in Altrincham. It is now five years since cask conditioned Sam Smiths mild and bitter replaced the chilled and filtered variety (Wednesday Feb 18th 1976, to be precise) to coincide with the complete renovation of the pub. Unfortunately Sams decided to stop brewing mild in cask form just over a year later and the Shovels became a bitter-only pub since Roy Beardow, brother of present landlord Pete, refused to take the nasty keg stuff out of protest. Pete has continued to build the Shovels up into a real community pub that offers good home cooking Monday - Saturday lunchtimes, jazz every night except Friday, when the piano takes over for a good singalong and Sunday, the banjo band's turn; a folk club upstairs on Wednesdays; teams in the darts and dominoes leagues and a Sunday football team. A host of other groups of people and clubs use the facilities of the function room, including the local CAMRA branch who meet there about four times a year. The social will be in the main bar on Thursday January 22nd, so come early if you want a seat!

CITY DESK



Sams Chop House, Back Pool Fold, Manchester 2, besides having Marstons Pedigree and Tetley bitter on handpump, also sells White Shield and $\frac{1}{2}$ litre bottles of the Belgian beer, Grolsch.

The Abercrombie, Bootle Street (next door to the police station) sells a good pint of handpumped Chesters bitter - it seems an ideal pub for the new mild, where it would go well. Also a good selection of lunchtime food and freshly-squeezed orange juice is always available.

Tetley mild is no longer available in the Brewers, Pall Mall. It has been replaced by Boddingtons mild, which joins Boddingtons bitter, both handpumped.

Draught Bass has been removed from the Brahms & Liszt in New Brown Street. Tetleys and John (wash your mouth out) Smith's fizzy bitters now prevail.

The John Bull on Brown Street, Manchester, after a brief flirtation with Pollards bitter, is no longer selling real ale.

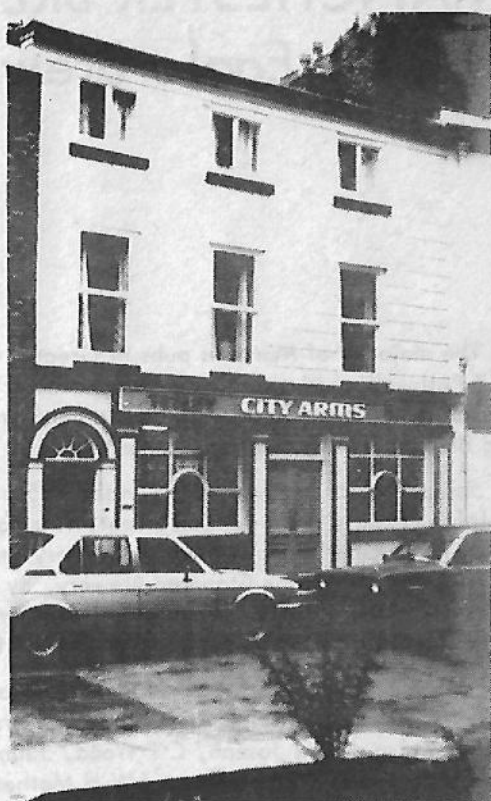
St Ann's Tavern, St Ann's Square, is closed until further notice.

The City Arms, Kennedy Street; after a slow (1x18 gallon) start, Walkers Warrington Ale is now selling 3 x 36 gallon barrels a week and demand still outstrips supply, even at 50p a pint.

The White Lion on Liverpool Road, apart from selling a good pint of Chesters bitter, also has a supper licence. It is open for midweek diners until midnight and until 12.30am on Fridays and Saturdays.

The St Matthews Tavern on Tonman Street, off Deansgate (near the City Hall) is well worth the effort of finding. The manager, James Henry Horday, is well used to selling Chesters cask bitter, having been in the trade for years in traditional Chesters country - Ashton Old Road. He's really looking forward to the cask mild's arrival. The St Matthews Tavern is a quiet, spotlessly clean pub - much bigger than it looks from the outside - and could be threatened by demolition as it is in a redevelopment area.

Did you know that the Oxnoble on Liverpool Road is named after a potato? Apparently the spuds were imported from Ireland and unloaded at Liverpool Road Station.



Let us hope that it's not too long before Chesters cask mild can be served along with the bitter at the Oxnoble - why else can the other handpump be there?

Boddingtons have decreed that half of 40p is 20½p - the relative prices of a pint and a half of bitter at Cox's Bar opposite Central Station. Is this a general Boddingtons policy?

QUESTION TIME

Q: Where in Central Manchester can you drink a lovely pint of handpumped Tetley bitter for 46p in plush surroundings, take in a sauna, enjoy good food and take a room for the night if you're incapable of facing the journey home?

A: The Midland Hotel Butty Boat Bar

A word of warning about the Butty Boat Bar: The nearest toilet is probably at Cox's Bar. The w.c. in the Midland is up a flight of stairs and about 100 yards away!

Peter O'Grady

MANCHESTER BREWERIES No 21

Taylors Eagle Brewery



The majority of Marstons pubs in Greater Manchester originate from either W T Rothwell of Newton Heath (Manchester Breweries No 17) or Taylors Eagle Brewery. Although Taylors did not sell out until 1958, Marstons had been supplying their pubs with beer ever since the Eagle Brewery closed down in 1924.

Joseph Taylor began brewing in the 1850s and first spent a short time at the Dolphin Brewery on Jenkinson Street. This had previously been used by Thomas Bake as the Chorlton-on-Medlock Brewery and later by Beaumont & Heathcote, when it was called the Standard Brewery. By 1860 the Eagle Brewery had been built on on the corner of Lloyd Street and Burlington Street in Greenheys, and after moving there made his home at Grove House, a few streets away.

Taylors Eagle Brewery Ltd was registered on 22nd February 1888, with an authorised share capital of £140,000. The first directors were Joseph Taylor and his son, also called Joseph, C P Wood, John Lawson and T E Roberts. Taylors probably acquired the business of W H Mather at the Lamb Brewery in about 1890. Standing at the rear of the Lamb Inn, 448 Oldham Road, this originally belonged to William Handley (early 1840s to 1870s). Mather progressed there via the Prince's Brewery on Vine Street (at the rear of the Northumberland Arms, Chester Road) and the Eclipse Brewery, Deansgate.

By 1912 only one of the original directors, T E Roberts, still held a seat on the board. In that year Taylors made a profit on brewing and bottling of £25,823, spent £3,704 on wages, incurred £212 in bad debts and loaned £33 to customers. Things weren't so rosy in 1923 however, when they had to transfer over £8,000 from a special reserve fund to the profit and loss account in order to cover a trading loss. The following year the brewery was closed and the equipment sold. The building housed a number of small businesses for a time and was then demolished to make way for a school.

Taylors continued as owners and managers of licensed property, making a modest profit until the beginning of a lean period from 1940 onwards. In 1952 they bought a wine and spirit business, W H Milner & Co Ltd. Milners had also been brewers in their time, using premises on Tyson Street, Cheetham Hill, a brewery which also had housed the Crumpsall Brewery Co, the Bee Brewery Co and Elliott's Brewery Co Ltd. W H Milner & Co had stores on Norton Street in

JOSEPH TAYLOR,
Ale and Porter Brewer,
EAGLE BREWERY,
LLOYD STREET,
BURLINGTON STREET, OXFORD ST.,
CHORLTON - UPON - MEDLOCK,
MANCHESTER.

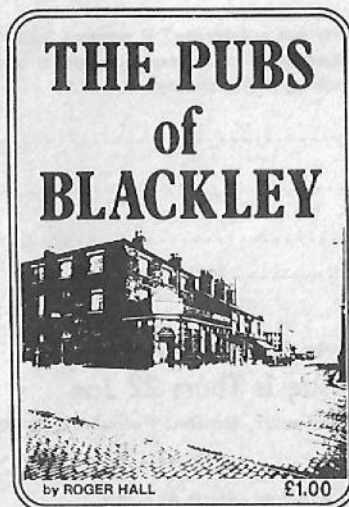
WILLIAM HANLEY,
ALE AND PORTER BREWER,
LAMB BREWERY,
ELM STREET, OLDHAM ROAD,
MANCHESTER.
SUPERIOR PALE AND BITTER ALES.
N.B. Sole Agent for Whitbread & Co.'s London Porter.

Salford, near the railway arches, which were kept in use after the takeover.

About 60 licensed houses were owned by Taylors, such as the Railway Inn, Stamford Street, Altrincham; the Carters Arms, Northenden Road, Sale; the Pine Apple Inn, Greenheys Lane and the Albion on Mill Street, Bradford, Manchester. The Taylors "Eagle" trade mark can still be seen on pubs like the Spinners Arms on Oldfield Road in Salford.

Alan Gall

BOOK OF THE MONTH



Roger Hall's "Pubs of Blackley" is a history of the Old House at Home, the Millstone and the New White Lion and many more. The story starts in the early 1600s, with the village's first alehouses, and traces the development of the pubs and the village through to the present day. Many of the pubs will be familiar to readers - the Flying Horse, the Pleasant, the Grove, and recent losses such as the Alliance, the Britannia and the New Inn - but there have been others in the village's past. Pubs such as the Prince of Wales, which suffered a fate which once threatened the Old House at Home, when it was pulled down for industrial development in 1932, and the Staff of Life, which closed some 70 years before that.

The Pubs of Blackley is well illustrated with old photos, beer labels and advertisements from days gone by and can be had from Roger Hall, 123 Hill Lane, Blackley, for £1.20, including postage.

MORE REAL WILSONS

The Bricklayers Arms, a comfortable little pub on George Street, Altrincham, went over to traditional Wilsons mild and bitter early in December. The present licensees are Jo and Alison Openshaw and Jo dug out the following notes on the pub's history after hours of painstaking research in Alty Library.

- 1852 Beerhouse occupied by Peter Drinkwater but owned by William Drinkwater
- 1858 Altrincham & Bowdon Directory gives Abraham Drinkwater of Beggars Square as having the occupation of beerseller
- 1886 -25th October. The licence holder was convicted of permitting drunkenness, fined 40 shillings with 17/6d costs and an endorsement of his licence.
The pub appears to have remained in the Drinkwater family until the late nineteenth century, and was known as 'Drinkwater's Cottages' It was known as the 'Brickmakers Arms' when it was owned by Renshaw & Cardwell's Brewery in 1891. This company brewed at premises in Hulme, opposite the Grand Junction, and sold out to Wilsons in 1902. The Drinkwaters remained as licensees until about 1897.
In the year 1900 the licensee was one Arthur Thomlinson, but by 8th March 1902 Joseph Hitchen was the publican and was convicted of permitting drunkenness and fined £2 with 14/6d costs.

1915 Electoral roll lists Mrs E Farrand as publican

1926 The licensee was popular local figure William Farrand Steel, who was also secretary of Altrincham Wednesday AFC.

Subscriptions

If you want to be sure of getting What's Doing every month, why not subscribe? It costs £1.60 for six issues, postage paid. Fill in the form below and send it together with a cheque or postal order made out to "What's Doing" to Roger Hall, 123 Hill Lane, Blackley, Manchester

NAME.....

ADDRESS.....

Please send me the next six issues starting with the issue (state month)

Back Numbers

These are available from the above address at 10p a copy. Please send a large s.a.e.

What's Doing COPY DATE for February issue is Thurs 22 Jan

What's Doing is edited by Neil Richardson, 51 Lime Street, Farnworth, Bolton. Farnworth 78138

JOIN CAMRA

To join CAMRA send £5.00 to: Membership, CAMRA, 34 Alma Road, St Albans, Herts AL1 3BW

- 1929 Electoral roll lists it as the Brickmakers Arms with residents Elizabeth Anne Farrand, William Farrand Steel, Doris May Steel and Edith Steel
- 1930 Electoral roll has been corrected by hand to (for the first time) the present name of Bricklayers Arms. Licensees since then were:
- 1942 James Hartley
- 1955 25th April 1960, Fred & Eva Green
- 1960 Joe Kenny (ex Salford Rugby League player)
- 1970-7 Bernard Walker
- 1977-9 John & Sandra Taylor (now licensees of Sale Hotel)
- 1980 Rui Sequiera Alvez for 6 months
- 1980 and presently Jo & Alison Openshaw

MR

Pseud's Corner

COMPETITION

Sir, — I note that you have quoted the familiar but incomplete version of Sod's Law (Leader November 21) the full version of which reads: "A jam bottle, when dropped, will always fall jam-side down — except when required to do so for the purposes of proving Sod's Law." — Yours,
B. J. Brownsword.
Stockport, Cheshire.

THE GUARDIAN

What's Doing contributors Mick Rottenbury (sorry to hear about the failed head transplant, Mick) and B J Brownsword have managed to get their names in the Guardian. What's Doing invites its other contributors to write to the letters page of the aforementioned newspaper, preferably on an amber nectar related topic. A suitable prize will be awarded to the sender of the most ludicrous piece of pretentious drivel which is printed.

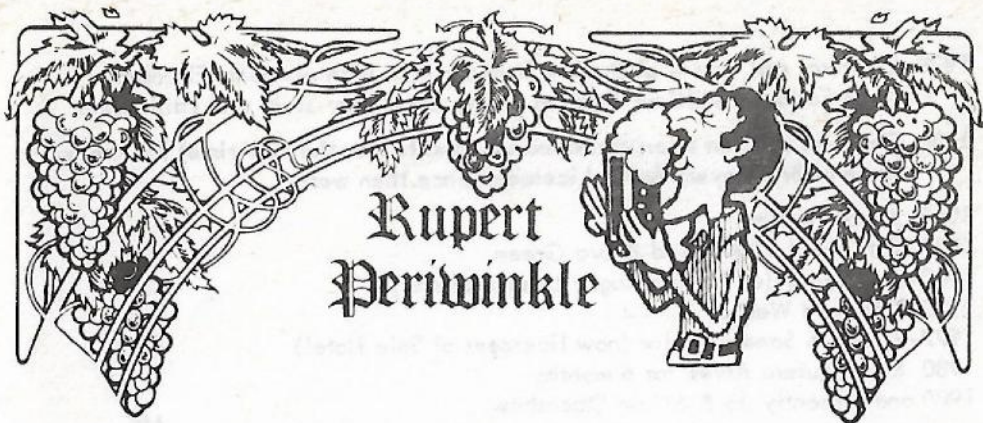
WASHBROOK'S

Specialist Home Brew Shop
59 Halifax Road, Rochdale

MALTED BARLEY GRAIN Lager Malt, Pale Malt, Crystal Malt
26p 1lb £1.65 7lb £11.50 25kg (55lb)
CRUSHED MALT GRAIN 28p 1lb £1.76 7lb £12.50 25kg (55lb)
DRIED MALT EXTRACT Light, Medium, Dark. 66p 1lb £30.30 25kg
LIQUID MALT EXTRACT 2lb £1.16 4lb £2.20 14lb £6.57 28lb £11.75 25kg (55lb)
HOPS 6 varieties 2oz 28p 16oz £2.15 £23.70

We stock the better Beer Concentrates Kwofitt, Cumbria, Muntona
Five makes of pressure barrels including Cornelius

For full list phone Rochdale 41590 - Callers always welcome



The leadership vacuum created by the premature demise of Demys has now been filled, not as was expected by the Hitler posturing Elsie, parrotophile Noble or even the emergent stop gap el supremo Hamish Himmel, but by the thrusting Tom Android, whose personality traits are so little known that he cannot be mocked. A dynamo at the top is just what the campaign needs at this moment in time, rather than drunken sea captains or obese biriani gobblers, megalomaniacs and heart on sleeve would-be legover situationists. It's nice to see that DOGSHIT boss Peter Hammerstein has also joined the hierarchy, although he does not feature in this year's ELSIES, presented for feats of outstanding merit in amber nectar related fields.

WHAT'S DOING ELSIES

The Herman Goering Luftwaffe Heritage
Prize ... Joseph Holt

The Nicest Licensee in all the world
.... Mr Mulroy

The Hitler Emulation Certificate
.... Elsie Clockwork Nun

Most Plastered Landlady (Unfortunately
the prime contender could not be
sobered up sufficiently to find out who
she was)

Advertising Standards Gold Award
.... The Great Railway Extortion

Lonely Hearts Club "Sweetie of the
Year" Ian Macmillan

Tolpuddle Industrial Relations Diploma

Best kept Pub Ballroom

Neville Chamberlain Ostrich Award



.... The Clever Mr Pollard

.... Jolly Angler

.... John (wash your mouth out) Smiths

The Late Bogbrush Graffiti Prize
 Cult personality of the Year
 Roué of the Decade
 What's Doing Page Three Girl
 Bunthorne Fortescue Peace Prize
 Jewish Piano Salesman of the Year

.... White Lion (Whale oil beef hooked)
 Tom Android
 Michael Rottenbodge
 Mole Whalebody
 Bunthorne Fortescue
 Perry Drab

I hear from Scousely that Elsie is as hetero as they come and indeed that the Clockwork-Nuns have always been so. Elsie's mother, the Reverend Arthur Clockwork-Nun was as straight as a fiddler's elbow. Still in Scousely, Mr Kiss Me Quick Bogbrush has, it seems, alienated himself from the local branch and is now in a lonesome selling situation vis-a-vis his organ.

IN THE GUTTER

This time of year sees more people stumbling into the gutter than any other. The reason for this lies partly in the appearance of dark and evil potions on bar tops up and down the country. I refer of course to the quaint English custom of the winter warmer or strong ale season. This magic liquid, known affectionately as Loopy Juice, Gravy Browning or just plain Yeuch! draws the dedicated imbibers to pubs that other drinkers never reach. To make the search even harder, some landlords have taken to hiding their elixir of life in the cellar and dispensing it through an un-named bar mounting. As an aid to the person seeking something different, the following strong ales are available this winter in Trafford and Hulme - but treat them with care! Prices are for half a pint.

Robinsons Old Tom (og 1079) Gardeners Arms (35p), Wythenshawe Rd,
 Northern Moor; Railway (35p), Chapel Road, Sale;
 Railway (32p), Ashley Road, Hale

Boddingtons Strong Ale (og 1063) Rope & Anchor (30½p), Dunham Massey;
 Railway (30p), Manchester Road, Broadheath

Marstons Owd Rodger (og 1080) Carters Arms (32½p), Northenden Road,
 Sale Moor

Hydes Anvil Strong Ale (og 1075) Quarry Bank (32½p), Bloomsbury Lane,
 Timperley; Grand Junction (33p), Rolls Crescent, Hulme

Unfortunately no pub has J W Lees Moonraker, despite its popularity at CAMRA beer exhibitions. If you can report any other sightings, please let us know. (see Branch Contacts in Branch Diary)

Real Ale Guides

The following publications are available from Roger Hall, 123 Hill Lane, Blackley, Manchester. The guides are updated from time to time so if you know of any changes please contact the relevant branch - see Branch Diary.

REAL ALE IN HIGH PEAK & NORTH EAST CHESHIRE

Including Marple, Hyde, Ashton, Audenshaw, Dukinfield, Stalybridge, Mossley & Denton. 10p + s.a.e.

REAL ALE IN SOUTH MANCHESTER - Gorton, Openshaw, Clayton, Didsbury, etc 10p + s.a.e.

REAL ALE IN STOCKPORT - Hazel Grove, Cheadle, Heaton Mersey, etc. 10p + s.a.e.

REAL ALE IN SALFORD - Swinton, Eccles, Irlam, Worsley 10p + s.a.e.

REAL ALE IN ROCHDALE Heywood, Littleborough, Middleton etc 10p + s.a.e.

REAL ALE IN ROSSENDALE - Bacup, Haslingden, Helmshore, Rawtenstall etc 10p + s.a.e.

INNS OF MAN - Illustrated comprehensive guide to the island's tied houses 50p + s.a.e.

REAL ALE IN TRAFFORD & HULME - Altrincham, Sale, Urmston etc. with maps 10p + s.a.e.

REAL ALE IN CENTRAL MANCHESTER A comprehensive guide to the real ale outlets within 1 mile of St Peter's Square. Map, illustrated 50p + s.a.e.

REAL ALE IN OLDHAM - Failsworth, Royton, Chadderton, Shaw, Saddleworth, 10p + s.a.e.

REAL ALE IN BURY - Ramsbottom, Radcliffe, Tottington, Whitefield, Prestwich, 10p + s.a.e.

REAL ALE IN MANCHESTER NORTH - city centre, Ancoats, Collyhurst, Newton Heath, Moston, Blackley, Cheetham etc 10p + s.a.e.

REAL ALE IN CENTRAL AND NORTH CHESHIRE - Warrington, Widnes, Runcorn, Lymm, Frodsham, Northwich, Middlewich and Winsford 10p + s.a.e.

THE ROAD TO WIGAN BEER - Leigh, Atherton, Standish, Skelmersdale, Newton etc, fully illustrated, maps. 35p + s.a.e.

REAL ALE IN ST HELENS - Sutton, Peasley Cross, Thatto Heath, Moss Nook, Eccleston, Parr, etc 10p + s.a.e.

REAL ALE IN GREATER GROTLEY - Slumley, Smarmford & Slutch, Poshton & Pseudley 10p + s.a.e.

GREATER MANCHESTER GOOD BEER GUIDE A selective guide to about 1,000 pubs in Greater Manchester - Bury, Stockport, Oldham, Salford, Trafford, Wigan, Bolton, Rochdale, Leigh, Tameside, etc. 64pp. £1.00 + s.a.e.

REAL ALE IN BURY METRO A 20-page guide to Whitefield, Ramsbottom, etc, with maps, illustrated, brewery history, etc. 50p + s.a.e.

REAL ALE IN HIGH PEAK Inc. Glossop, New Mills, Whalley Bridge, Buxton 15p + s.a.e.

Pub & Brewery Histories

The following publications are available from Alan Gall, 22 Stoneleigh Drive, Stoneclough, Radcliffe, Manchester M26 9HA

SALFORD'S PUBS No1 - Hanky Park, Regent Road, Cross Lane, Walker & Homfrays, etc. 78p inc post.

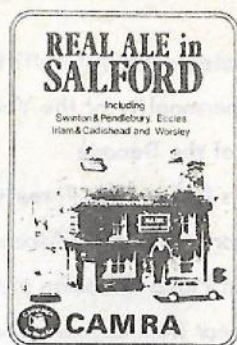
SALFORD'S PUBS No2 - Greengate, Chapel St, Ordsall, Threlfalls, small breweries etc. 78p inc postage

SALFORD'S PUBS No3 - Broughton, Weaste, early inns, Groves & Whitnall, demolition, etc. 78p inc postage

SALFORD'S PUBS No4 Pubs 50 years ago, alehouses of 1600s, 100 years of brewing, pub names 93p inc post

WIGAN'S PUBS No1 Town centre, Newtown Brewery, Aireys, Oldfield, Albion breweries etc 47p inc post

WIGAN'S PUBS No2 - Scholes, early inns, brewing in and around Wigan, surrounding pubs 47p inc postage





Branch Diary

TRAFFORD & HULME

- Sat 3rd Jan: Lunchtime crawl of Liverpool city centre. Meet 12.00noon White Star (Quinn's), Rainford Gardens, followed by inter-branch football match at Anfield - Scousery v Trafford Cloggers
- Mon 5th Jan Tetleys Brewery (Warrington) coach 6.20pm Stretford, Bass Drum; 6.25 opposite Sale Odeon; 6.30 Altrincham, Malt Shovels
- Wed 7th Jan 8.00pm Committee Social, Lloyds Arms, Higher Ormond Street, Hulme
- Thurs 15th Jan 8.00pm Branch Meeting, Cheshire Midland, Ashley Road, Hale (by Hale Station)
- Thurs 22nd Jan 8.00pm Pub of the Month, Malt Shovels, Stamford Street, Altrincham
- Thurs 29 Jan 8.00pm Social, Windmill, Carrington Lane, Carrington
- Thurs 5th Feb 8.00pm Committee/Social, Victoria Tavern, Victoria Street, Altrincham
- Thurs 19th Feb 8.00pm Branch Meeting, Malt Shovels, Altrincham. Guest speaker, film and samples of real cider from Bulmers
- Weds 25 Feb Brewery visit to Jennings, Cockermouth (coach)
- Contact Mick Rottenbury 061 969 7013 (home)

SOUTH MANCHESTER

- Thurs 8th Jan Branch Meeting, Castle, Oldham Street 8.00pm (note change of venue)
- Fri 16th Jan Chesters Bitter Sampling Session. 7.30 Waldorf, Gore Street; 8.30 Crown & Anchor, Hilton Street
- Thurs 22nd Jan Pub of the Month, Malt Shovels, Altrincham 8.00pm
- Contact: Humphrey Higgins 432 0059

BOLTON

- Tues 6th Jan Branch meeting Spread Eagle, Hulme Street 8.30
- Sat 17th Jan Meal followed by crawl. Cromptons Mule 7.00
- Weds 21 Jan Social, 3 Crowns (food available), Deansgate 8.30pm
- Weds 4th Feb Branch Meeting, Rawsons Arms, Peel Street, Farnworth 8.30pm
- Weds 11th Feb Social, BIT Social with Real Ale Society 8.00pm
- Contact Bert Kerks Bolton 388172

SOUTH LANCASHIRE

- Weds 14 Jan AGM Old Pear Tree, Wigan. 8.00pm prompt
- Tues 20th Jan St Helens centre survey. Start Cotham Arms 8.00pm
- Weds 4th Feb Branch meeting, Derby Arms, Hindley 8.30pm
- Contact Ian Ogden Wigan 79534

NORTH MANCHESTER

- Weds 4th Feb Greengate Crawl. Three Legs of Man 7.00; Black Friar 8.00pm
- Weds 11th Feb Social / Committee meeting. Grove, Bury New Road 8.00pm
- Fri 13th Feb Trip to Macclesfield 1912 train from Piccadilly, 1920 from Stockport. Assemble Waters Green Tavern 1945. Contact Duncan Roberts 793 5750 (note new phone no.)
- Weds 18 Feb 8.00pm Branch meeting Kings Arms, Oldfield Road, Salford
- Weds 28th Jan. Club Crawl of Swinton. Meet Bulls Head 7.00pm
- Contact: Roger Hall 740 7937

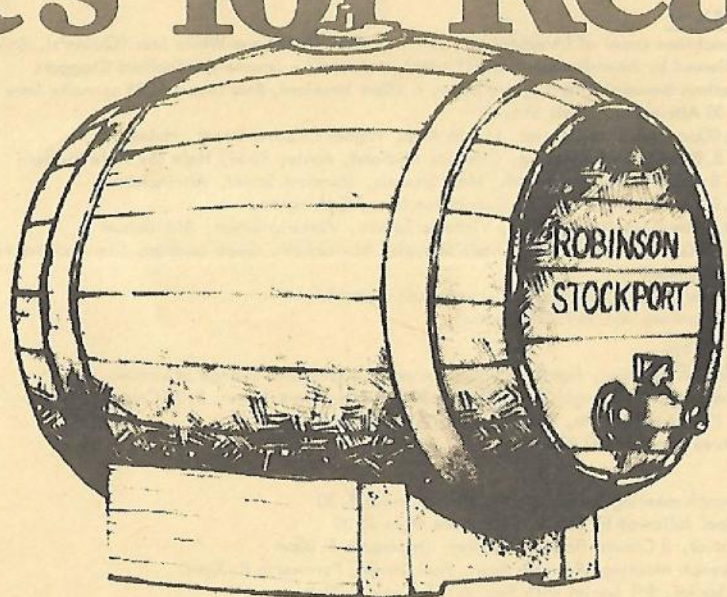
ROCHDALE OLDHAM & BURY

- Tues 13 Jan 8.00pm Branch meeting Old Blue Bell (Wilsons) Bell Lane, Bury
- Tues 20th Jan 8.00pm Committee meeting Napier (Thwaites), Bolton Street, Bury
- Tues 10th Feb 8.00pm Branch meeting, Bridgewater (Holts), Manchester Road, Oldham
- Speaker from Bulmers Cider - VENUE SUBJECT TO CONFIRMATION
- Tues 24th Feb 8.00pm Committee meeting Smut (Boddingtons) Manchester Road, Oldham
- Contact: Steve Lawton 061 236 4411 ext 7236 061 620 9239

GENERAL

- Mon 26th Jan 8.00pm. Meeting of Manchester University Real Ale Society, Students' Union
- Sunday 18th Jan Area Finance Committee Meeting. 12.15 Peveril of the Peak
- Sunday 25th Jan Castle, Oldham Street 11.00am Regional Meeting

It's for Real



We at Robinson's think that what matters most about beer is its flavour. That's why we are still brewing beer the same way that we did a hundred years ago. Natural ingredients, the same time-honoured brewing ways, even on the same site - not many can say that!

And you can buy at least one, usually two and sometimes more of the traditional ales listed here in any Robinson's pub within 100 miles of Stockport. Not many can make that sort of claim either.

Now you can have Real Ale at home for parties or just for your own enjoyment. Available in Firkins and Pins*, complete with tap, stillage and detailed instructions. You can order from any Robinson's On or Off-Licence or Unicorn Wine Shops.

Old Tom Ale
Best Bitter Ale
Bitter Ale*
Best Mild Ale



Always available from Unicorn Wine, Lower Hillgate, Stockport, (just by the Brewery) 061-480 6571. And it's the cheapest way of buying beer. A little more trouble perhaps but we think you will agree with us that it is worth it.

There are deposits on the casks, stillages and taps, returnable in full when you bring them back. You can borrow glasses, paying only for those you break or fail to return providing you also make appropriate purchases of items to fill them.

We strongly recommend that you place your order as soon as possible for Christmas or New Year use.

It's Robinson's . . . for Real.

*Bitter Ale not available in Pins

**When you buy any of these Robinson's Ales,
you are buying Traditional Draught Beer
-at its very best.**