



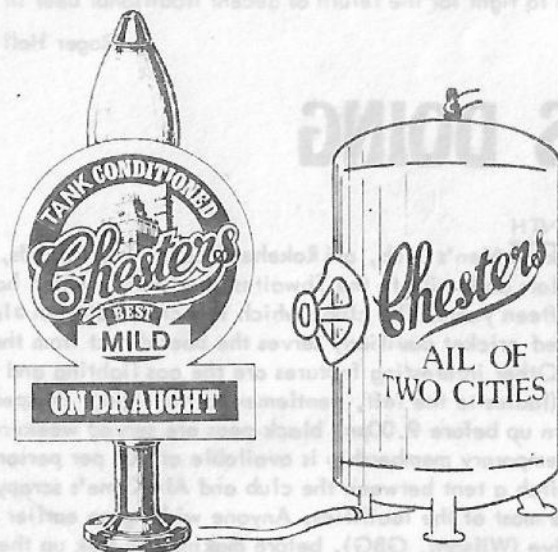
10p

WHAT'S DOING

JULY
1981

THE MANCHESTER BEER DRINKER'S MONTHLY MAGAZINE

K.O. FOR CHESTERS FIGHTING MILD?



Just six months after Whitbread introduced their traditional Chesters Mild, rumour has it that soon all Chesters Mild will be brewery fined and stored in tanks. The new version of the beer will be served from the handpumps installed for the cask Chesters.

Whitbread have done so much in this area to reintroduce cask beer and bring some life back to Salford and its only remaining brewery. Can they really be guilty of such nefarious conduct?

GONE FOR A BURTON

So Bass are to scrap their Union System. Yet another beer of repute dies a death. But before we start mourning the loss of Bass, which has been brewed in the same way for 150 years, perhaps we should reflect on what it will mean in Greater Manchester. In the North Manchester branch area the loss of Draught Bass is more or less irrelevant. What is of importance is the brewery giant's appalling performance in supplying any traditional beer in the area. In Metropolitan Salford and North Manchester there are 37 Bass pubs, mainly former Cornbrook, Hardys and Openshaw houses. Of these, only 7 serve traditional beer, including 4 pubs which serve Draught Bass. Perhaps we should be asking the world's biggest brewer of draught beer why over 80% of their pubs in the area don't sell real ale. Have Bass now assumed the role, formerly held by Watneys and Whitbreads, as enemy number one? Are they trying to foist on the public beers which are made more cheaply in plants like Runcorn? Why can't Bass sell the beers which people want instead of spending vast amounts of money persuading Mancunians to drink inferior products like the Stones which is found on this side of the Pennines? The Burton Union system may be doomed but it is not too late to fight for the return of decent traditional beer in Manchester's Bass pubs.

Roger Hall

WHAT'S DOING

CLUB OF THE MONTH

The Kimberley Working Men's Club, off Rakehead Lane, Stacksteads, Bacup, has recently added Taylors dark mild to the Thwaites' best mild, which has been on sale there for the last fifteen years. The club, which is a cross between a large chicken hut and a dilapidated cricket pavilion, serves the beer direct from the cellar, via barrel handpumps. Other interesting features are the gas lighting and the total lack of toilet facilities (ladies to the left, gentlemen to the right). Prospective visitors are asked not to turn up before 9.00pm; black peas are served weekend evenings around midnight. Temporary membership is available at 10p per person and there is plenty of room to pitch a tent between the club and Alf Kyme's scrapyard for those wishing to make the most of the facilities. Anyone wishing an earlier start should call in at the Beehive (Wilsons, GBG), before making the trek up the road.

LET IT BLEED

The Bleeding Wolf, Ashley Road, Hale, now has Chesters mild and bitter on handpumps. Closed for about five months after a fire in December, it was Whitbread's intention to re-open the pub as the "Bitter End" after a complete internal refit. Incensed locals, with the backing of a local councillor and the landlord, managed to persuade the brewery to retain the original name and with it, the pub's links with the history of the area.

NEWTON SHOW

Saturday August 8th is the date for this year's real ale extravaganza at Newton le Willows Town Show. There will be a range of approximately 15 beers to sample, featuring the usual favourites and some more exotic brews. The beer tent will be

licensed from 12.00 to 5.00pm, and there is a small entrance fee to the showground, which is within walking distance of Newton BR Station (on the Manchester-Liverpool line).

DISCO PUBS

First it was the Bluebell in Royton, now it's the Sholver, situated on a large estate of the same name on the hills overlooking Oldham. Both were social clubs and both have been bought by J W Lees, who extensively altered the interiors. Now go-go dancing, discos, bouncers on the doors and loud music all feature at these quaint little hostelrys. At least the beer is real!

MOORHOUSES MOVES

Moorhouses have recently appointed Bill Bell (ex Appleby Brewery) to their staff, along with a new sales rep. It is hoped that this will lead to a higher degree of acceptability of Moorhouses beers. The brewery have recently acquired the Centre Spot on Brunshaw Road, Burnley, next to the football ground. They have applied for a public house licence to replace the present club licence, and intend to rename the club/pub the Moorhouses Arms. If all goes well, this will be their first tied house.

Rumours that Moorhouses are acquiring pasteurisation equipment have been confirmed. But it is hoped this is for bottling purposes and will not affect supplies of cask beers to current and future outlets; although the brewery do use convertible casks, which could easily be employed as containers for bright beer.

EXPENSIVE LION

The recently swapped Oxford, Whitworth Road, Rochdale (ex Wilsons), is currently selling Matthew Brown bitter (og 1036) at 54p a pint in the lounge. The "other room" is in fact a cocktail bar, so don't expect the beer to be any cheaper in there.

BASS SELL UP

The only two Bass pubs in Wigan are being sold. The Allison Arms at Appley Bridge and the Crown at Standish are both non-real ale pubs at present. Whether they are being sold as free houses or with a tie is not known, so let's keep our fingers crossed! The Crown at Standish was once a Catterall & Swarbrick pub before Bass took over.

MORE IN MANCHESTER

Since Real Ale in Central Manchester hit the newsstands there are now three additions to the real ale list. The two Yates' Wine Lodges (Great Ancoats Street and Oldham Street), selling Boddingtons, have been joined by Mother Macs, Back Piccadilly (Chesters bitter).

DEAR BEER

Real ale drinkers, keen to maintain the price differential between mild and bitter, should spare a thought for the unlucky customers of the Footballers, Summerseat (Whitbread). Here one can enjoy the dubious delights of tank Trophy, keg Chesters mild, Whitbread best mild or Whitbread Amber - choose your poison - they all cost 50p a pint. We recommend you walk ten yards across the road to the Hamers (Matthew Brown) for cask mild and bitter at 46p and 48p respectively.

NO DUTTONS

Wigan's only Whitbread Duttons outlet, the Belle Vue, Woodhouse Lane, has

no real ale at the moment. The landlord has left for a Tetley pub in Bolton, not having seen eye-to-eye with Whitbread. Lovers of Whitbread Duttons ale will have to put up with Trophy, or go to the Derby Arms at Hindley.

BASS BOTHER

Bass NW tell us that it ain't their fault that the Bass pump in the Seven Oaks, Manchester, isn't working. The equipment belongs to Whitbread, who may be having trouble getting a new part.

SHIRES MILD

The Two Shires Brewery has recently introduced a mild to their range. Outlets are fairly restricted, but try Leach's Wine Cellars, Whalley Road, Shuttleworth, for polypins and also Sue's Brews, Waterfoot (Ross 215104). The company's first production mini-brewery is destined for the Doncaster area of the People's Republic of South Yorkshire.

PRICES UP

Recent brewery price increases have been: Thwaites 2p, Tetley 3p, Greenalls 3p

TALLY HO

The Huntsman (Boddingtons) is Ashton on Mersey's first real ale pub for several years. It stands on the corner of Firsway and Catterick Avenue. Before the pub opened at Easter, the choice in the area was restricted to bright Greenalls, John (wash your mouth out) Smiths and other fizzy products.

D.O.G.S.H.I.T. RIDES AGAIN

An inaugural meeting of the Greater Manchester Pub Preservation Group will be held immediately before the next Regional Meeting, at 7.15pm in Yates Wine Lodge, Great Ancoats Street, on Wednesday 22nd July. The major business will be to set up a working party and to determine priorities in the area. All interested members welcome.

TONG INN (CHEEK!)

An application has been made to convert a warehouse into a licensed (what other sort are there?) public house in Manchester's growing Chinatown. The proposed pub in Faulkner Street would, no doubt, cater for the Chinese community and, presumably, would not sell beer, but you never know.

NEW PARK KEEPERS

Pauline and Alan Pennington took over the Park (Lees), Moorcroft Road, Wythenshawe, following the retirement of Mr & Mrs Heines. The new licensees are delighted to be handling real ale after working at Irlam Social Club, where the beer is tanked Wilsons.

READ ALL ABOUT IT

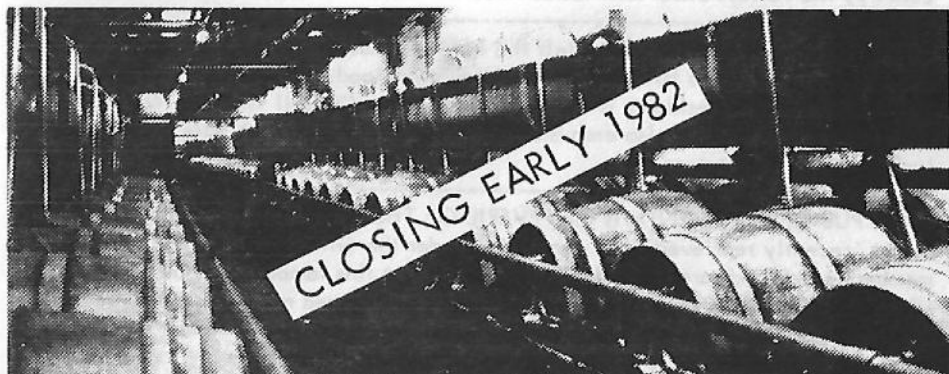
The South Manchester branch have had a number of posters, entitled "REAL ALE NEWS", printed, which are intended to advertise details of your branch events and for distribution to pubs, etc. They are available in two sizes at a cost of 1p each, with a minimum order of 25 plus post & packaging. Anyone interested in obtaining a supply should contact Terry Grimshaw, 21 Allingham Street, Longsight, Manchester M13 0ZF. Tel 224 0374.

DON'T BE DAFT BASS

BASS, Britain's largest brewing combine, plan to close their famous Union system of brewing at their Burton upon Trent brewery.

The decision has angered both beer drinkers and

publicans all over the country, as it threatens not only the most historic and highest quality brewing system ever built in this country but also the future of Britain's most popular traditional beer, Draught Bass.



The Burton Unions are an old and proven brewing system dating back to the 1840s. Beer ferments in a series of interconnected large oak casks, called Unions. The frothing brew circulates round the system continuously passing over the yeast – and it is this process that helps to give Draught Bass its unique taste and character. The Union system also plays a vital role in preserving the Bass yeast – which has remained unchanged for over 150 years.

FACT: Bass, in their own publicity, stress the importance of the Burton Unions to the production of a high quality beer. Their own brewers are rightly proud of the Union system and privately admit that they will be very sad to see it go.

FACT: Bass say that the reason for the closure is the cost of making repairs to the system and the room housing it. It would mean spending many thousands of pounds. Yet at the same time

they are happy to spend many millions of pounds on equipment at other breweries to produce mass-marketed keg and canned beers and lagers.

FACT: Marston's, the only other brewery in Britain to run a large, functioning Union system, have recently renovated and expanded their system for fear that if they did not the quality of their beers would suffer.

The Campaign for Real Ale believes that the decision to close Bass's Union system is wrong. It was a decision taken by accountants, not brewers, to boost profits at the expense of quality.

BUT, recent developments show that Bass may be having second thoughts. If we all make our views

known loud enough and clear enough, the Burton Union could still be saved.

If you think the decision is wrong, write to the man at the top and tell him so. His name is: **Mr Jack Leachman, Chairman, Bass Brewing Ltd., 137 High Street, Burton upon Trent, Staffs DE14 1JZ.**

**Great stuff this Bass
– let's keep it that way!**



CITY



DESK

Peter O'Grady

The handpump has been removed from the Midland Hotel's BUTTY BOAT BAR. This is presumably the first step in British Rail's much vaunted "electrification programme." Luckily, the Tetleys bitter still tastes fine.

Popular landlord Peter Gibbs has left the TOWN HALL TAVERN to take up his first tenancy at Tetleys HARLEQUIN in Middleton Road, Chadderton. The other good news for local residents is that Peter is very keen to sell Walkers Warrington Ale and the brewery are also enthusiastic. We wish Peter and his wife Jenny good luck in their new venture.

July's PUB OF THE MONTH is the PEVERIL OF THE PEAK, Great Bridgewater Street, recently reprieved from demolition under the GMC's road plans. CAMRA members and friends are assured a great welcome at this famous triangular shaped, tile-faced "local" in the city centre. Wilsons handpumped mild and bitter are always in good form at the Pev. The pub, which is named after a former coaching route, is also famed for its partitions - the stained glass partitions and, of course, the "Save the Pev" petitions. (Sorry!) We hope to invite representatives of Wilsons Brewery to the evening and food and drink will be provided. However, dunderfunks will not. ("Dunderfunks?" - look it up. Word of the Month supplied by Gwyneth Jack of Withington.)

June 4th saw the newspaper charities' OLD BEN WALK take place round the city centre. CAMRA, in conjunction with the Soaraway Sun and the News of the World, together with Sam Smiths, manned one of the checkpoints. Free ale was given to the first 100 walkers, along with CAMRA literature and membership forms. The evening was a great success, with many people showing interest in CAMRA's work. Let's hope they read this and carry out the various promises made to join the campaign!

Derek Mapp, Managed House Manager of Sam Smiths brewery, has invited CAMRA members to an evening in Sinclairs' upper room, where we will be regaled with tales about the history of the pub and also the brewery. We hope a date will soon be fixed to take advantage of Mr Mapp's kind offer.

"3 Packs" of Sam Smiths Strong Porter - a strictly limited edition, commemorating July 29th 1981, can be ordered from SINCLAIRS at £2.50 per pack.

New licensed premises appear to be on the verge of opening in Clarence Street (just off Albert Square). It seems likely it will be a wine bar-type establishment,

and is conveniently situated beneath the thermal underwear shop.

Strangely enough, no one has yet claimed the prize for obtaining a pint of real ale in John (wash your mouth out) Smith's Vine Inn. I wonder why? The prize is hereby doubled.

WHAT'S DOING

TOPHAMS TAVERNS TIPPLES

Following the introduction of Boddingtons bitter at Tophams in Heywood, the similarly named pub at Smithybridge Road, Rochdale, has followed suit. Electric pumps are in use at both pubs. Our scout in this area also informs us that the Hare & Hounds, Ramsden Road, Wardle, now sells traditional Wilsons mild and bitter by handpump.

TAMESIDE CANALS FESTIVAL 25th/26th JULY

There will be a real ale tent at this event, which will be held at the Portland Street Canal Marina, Ashton under Lyne on..

Saturday 25th July	12.00noon to 5.00pm
	7.00pm to 11.00pm
Sunday 26th July	12.00noon to 4.30pm



Local beers; others from further afield; cider, etc.

Many other events and attractions; fairground; stalls, entertainment; bands, etc

BEER QUALITY

What is happening to John Willies these days? Over the last few months the bitter has all but lost that characteristic "metallic" bite, which gave the beer such an individual flavour. The mild beers seem unaffected. Rumours in the trade suggest that the bitter is leaving the brewery with inadequate cask conditioning, in an effort to supply the needs of the beer-starved, strike-torn, Ansell's trading area. Perhaps a new season's hops or barley are responsible. Do us a favour JWJ, and get it back to normal as soon as possible, whatever the cause.

TETLEY TRIALS

Tetley-Walker have been undergoing some elaborate test-marketing for a proposed new mild and a new bitter. The test markets were held on alternate weeks during June at the Raven, Wigan, and Caledonian, Ashton in Makerfield. Members of the public were invited to pass comments on three beers at each trial - an established brew from Tetley-Walker, the trial brew and an established brew from Greenall Whitley. Not surprisingly, those partaking in the sample were not told which beer was which. The testing was done on a very professional basis, with several interesting questions asked, such as: "Do you think that this beer is made from traditional ingredients?" and "Do you think that this beer comes from a small brewery?" Obviously, Tetley-Walker are taking more care with the introduction of these new beers, in view of their Warrington Ale disappointments. It is hoped that these new cask beers will come on to the market eventually. The trial bitter was a particularly excellent and full-flavoured brew, and should prove a deserved success if introduced locally.

Contributors: Ian Ogden, Steve Lawton, Alan Ball, Tom Lord, Mick Rottenbury
Paul Roberts, Don Chattwood, Stewart Revell

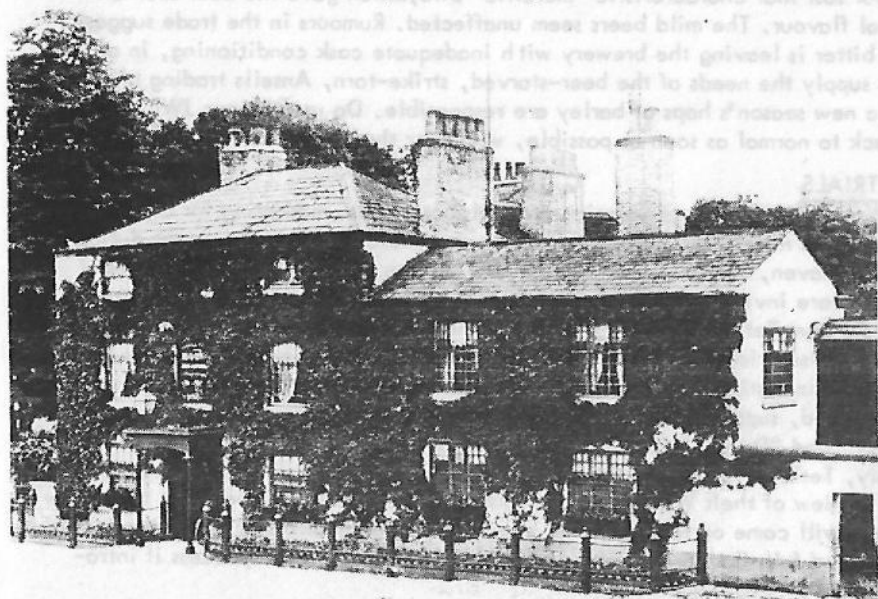
THE PUBS OF WORSLEY

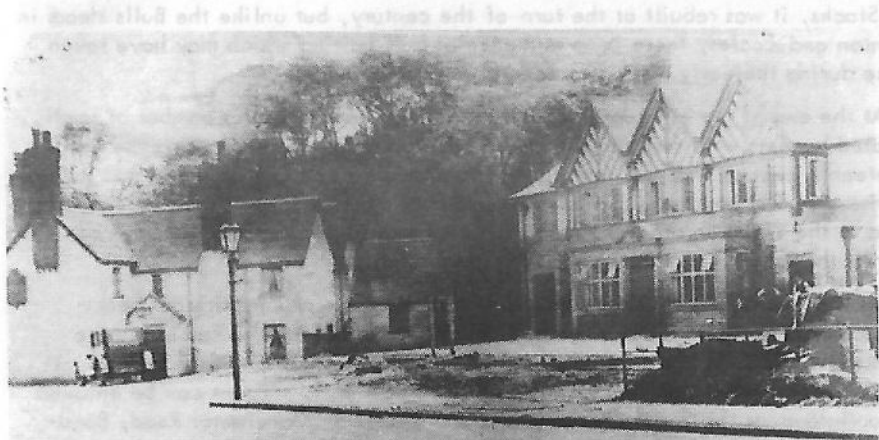
In the year 1629 there were five alehouses in Worsley - which at that time included Swinton and Newtown as well as Boothstown, Ellenbrook and Walkden, so it is likely that not all the pubs were in present-day Worsley. The alehouse-keepers in 1629, the earliest year for which licensing records are available, were John Darbishire, Hugh Meaneley, Thomas Collier, Elizabeth Haughton and Hugh Langshaw. Unfortunately, pub names or signs were not recorded until almost 150 years later, so it is difficult to say with any certainty where these pubs were. The name Hugh Meaneley, however, gives an accurate clue to one location. The Cock on Walkden Road was, for many years, known as the Meanlee or Mesnes Lea, and was a meeting place for the overseers of the poor.

It is likely that the four other alehouses in existence in 1629 were the White Horse at Little Haughton, the Stocks at Walkden and the Red Lion at Ellenbrook. The name Collier was associated with the White Horse for many years in the eighteenth century.

In the late eighteenth century, when alehouse recognizances included the name of the establishment, there were five alehouses in Worsley (excluding Swinton): The Grapes, the Red Lion, the Cock, the Swan and the Bulls Head, all of which still exist today, although all but one have been rebuilt.

The Grapes was an eighteenth century coaching inn in Worsley village, opposite the courthouse, and was demolished in 1903. The culprit was the Earl of Ellesmere, who was tidying up the place before King Edward VIII and Queen Alexandra came to see him. An impressive new gatehouse to the New Hall was





built on the site and a new Bridgewater Hotel was built on Barton Road. The Bridgewater, or Grapes, as it was better known in the locality, has always been associated with meetings of local groups and societies. Until the Courthouse was built in 1849, the Court Leet was held at the pub, and until 1894, when Worsley District Council was formed, township meetings were held at the Bridgewater Hotel. The Duke of Lancasters Own Yeomanry and the Worsley and District Agricultural Society have also used the hotel as their headquarters. The present Bridgewater Hotel maintains the tradition. The North West Brewers Association has its headquarters there and the boardroom is used for meetings of other societies.

The Cock, the only other pub in Worsley itself, was built in 1930. It replaced a smaller Cock, dating back to the seventeenth century, which was to the south of the present building (see photograph, which shows both). On the site of the old Cock is a grave bearing the inscription: "In memory of Polly, mother of 200 pigs. Died December 23, 1904, aged 15 years." This porcine toper, if legend is to be believed, was the property of the licensee. Inside the Cock is a painting of SS Snowdrop, which was the first steam vessel to reach Manchester.

The Red Lion at Ellenbrook is certainly of some antiquity. There is still evidence of stables in the present building and the existence of the church in the fifteenth century would indicate the presence of an alehouse from about this period. Although the Red Lion has been altered considerably over the years, it is the only Worsley pub which can trace some of its structure back 200 years.

The Stocks at Walkden was rebuilt in 1898, on the site of the former pub. The Stocks was formerly known as the Swan or the Swan with Two Necks, and derived its modern name from the location of the village stocks in front of the pub. Meetings of the town council and coroners' inquests were held at the Stocks during the nineteenth century and the present pub is still used for meetings of local societies.

The Bulls Head, as the name implies, is also a hostelry of some antiquity. Like

the Stocks, it was rebuilt at the turn of the century, but unlike the Bulls Head in Swinton and Eccles, there is no evidence of bull baiting which may have taken place during the early nineteenth century.

At the end of the eighteenth century, Worsley consisted of a number of small, isolated hamlets with few houses in between. Population growth during the early nineteenth century led to a new pub in Boothstown - the Greyhound - and several beerhouses. The beerhouses, which developed as a result of the 1830 Act, were confined to the Walkden area of the township - the Bridgewater and the Cock remained the only licensed premises in Worsley itself.

Of the five pubs surviving from the 1780s, only two sell traditional beer - the Cock and the Bridgewater are both Boddingtons outlets; the Red Lion, the Stocks and the Bulls Head being tank Tetleys, Greenalls and Whitbread respectively. Of the newer pubs within the old township limits, Wilsons can be enjoyed in Boothstown at the Royal Oak, Tetleys at the Bell on Manchester Road, Boddingtons at the Vulcan on the Farnworth boundary and Holts at the Morning Star in Wardley.

Roger Hall

LETTERS

Sir,

It might be of interest to your readers to know that Robinsons Best Bitter has reached the more remote regions of Cornwall - namely the Bird in Hand at Hayle; ten miles from Penzance and 400 miles from Stockport. It is served by handpump, tastes excellent but costs 66p a pint. A frightening figure, I admit, but it does pass through two distributors' hands and I suppose they all want a rake-off.

It might also be of interest to Robin, Boddington (dec'd) and friends, that the Bird in Hand is on the same site as the Bird of Paradise Children's Zoo, a collection of rare and endangered tropical birds with the parrot species prominent. The owner of these two ventures has also started to brew his own beer, called Paradise Bitter (1041.9 og). It is expected that this will sell at a respectable 48p a pint in the Bird in Hand.

Yours, P Jobin

Sir,

I couldn't agree more with your views (June WD) on Salford Council's policy of enforced total abstinence, but why the gratuitous slur on Swansea? "Indistinguishable from Slough" indeed! Things aren't all rosy down by the mumbling bay, but there are still plenty of good honest boozers left. For "Away Match Ale", for example, try: For First Division (!) Soccer at the Vetch Field - the Clarence in Clarence Street (Worthington Dark). For top-class Rugby Union and in-the-doldrums Glamorgan cricket at St Helens Ground - the Westbourne, by the old hospital on St Helens Road (Dark again, plus Bass, and a strong sporting theme). All this and laverbread too - Slough indeed!

Yours, Rhys P Jones

DUTTONS CASK

Duttons cask bitter will be going into 55 outlets, 20 during June, the remainder in August, when it is hoped that more casks will be available. The beer has an og of 1034. The number of outlets will eventually be increased to at least 100. The last cask beer brewed at the old Duttons brewery in Blackburn was in March 1975, and the brewery itself was closed in September 1978 with the onset of the fizzy products being churned out at Samlesbury. Initially, two handpumps are being supplied to each pub; existing Special Cask outlets will use the handpumps they already have. Pump clips and beer mats will be introduced, together with tee shirts to advertise the beer. The old Duttons lettering is being used, but not the old Duttons light blue - green and red being preferred.

NEW OUTLETS

George IV, Burnley
Bull Hotel, Nelson
Rose & Crown, Starling, Bury
The Canary, Farnworth
Major, Ramsbottom
Royal Oak, Skipton
Crown, Morecambe
New Hall Tavern, Samlesbury
Highcross Hotel, Hardhorn, near Blackpool

Bridge Inn, Clitheroe
Three Pigeons, Bolton
Wilton Arms, Belmont
Moses Gate, Farnworth
Black Horse, Bolton
Bridge, Radcliffe
Hare & Hounds, Blackburn
Dog Inn, Longridge
Queens Hotel, Blackpool

TRANSFERS FROM SPECIAL CASK TO DUTTONS BITTER

The Blossoms, Ansdell
Talbot, Lytham

Bull Hotel, Blackpool
McKenzie Arms, Bamber Bridge



Clifton Arms, Lytham
 Coach & Horses, Bolton by Bowland
 Feathers Inn, Brierfield
 New Britannia, Preston
 New Inn, Gisburn
 Tillotsons Arms, Chipping
 White Bull, Ribchester
 Bulls Head, Bolton
 Derby Arms, Bolton
 Farmers Glory, Haslingden
 Lamb Inn, Bury
 White Lion, Rawtenstall
 Half Way House, Samlesbury
 Railway Inn, Daubhill, Bolton

Black Bull, Cowling
 Emmott Arms, Colne
 Fountain Inn, Linton
 New Inn, Clitheroe
 Swan with two Necks, Pendleton
 Townley Arms, Chorley
 Bay Horse, Heywood
 Cross Guns, Bolton
 Duckworth Arms, Bury
 Gamecock, Bury
 Tippings Arms, Bolton
 White Lion, Heptonstall
 Royal George, Heady Hill
 Black Bull, Chatburn

This list of 50 pubs appears to be incomplete, as the brewery stated that 55 pubs were taking the beer. However, in addition to these, the Waggon & Horses on Walmersley Road, Bury, also sells Duttons; the Mayoress of Bury was photographed pulling pints of thin air there over two months ago. Another confirmed outlet is the Major in Ramsbottom (47p a pint).

Although the list has the Duckworth Arms, the Tippings Arms and the Railway listed as transfers from Special Cask to Duttons, none of the three pubs has sold Special Cask for at least six months, and in the case of the Railway, two years would be nearer the mark.

It is only to be hoped that a sensible pricing policy will be adopted with Duttons bitter, which has often not been the case with Chesters bitter.

Also being launched is the Duttons replacement of Whitbread Amber - Duttons Light. (One wonders how low the original gravity is) The brewery are obviously not convinced that the beer will be readily accepted, as a hoarding advertising campaign is under way for this fizzy rubbish. No doubt the advertising budgets and policies for this and the traditional product would be well worth comparing.

Don Chattwood

WASHBROOK'S

Specialist Home Brew Shop
 59 Halifax Road, Rochdale

MALTED BARLEY GRAIN Lager Malt, Pale Malt, Crystal Malt

26p 11b £1.76 71b £12.50 25kg (551b)

CRUSHED MALT GRAIN 28p 11b £1.85 71b £13.50 25kg (551b)

DRIED MALT EXTRACT Light, Medium, Dark. 66p 11b £30.30 25kg

LIQUID MALT EXTRACT 21b £1.16 41b £2.20 141b £6.57 281b £11.75 25kg(551b)

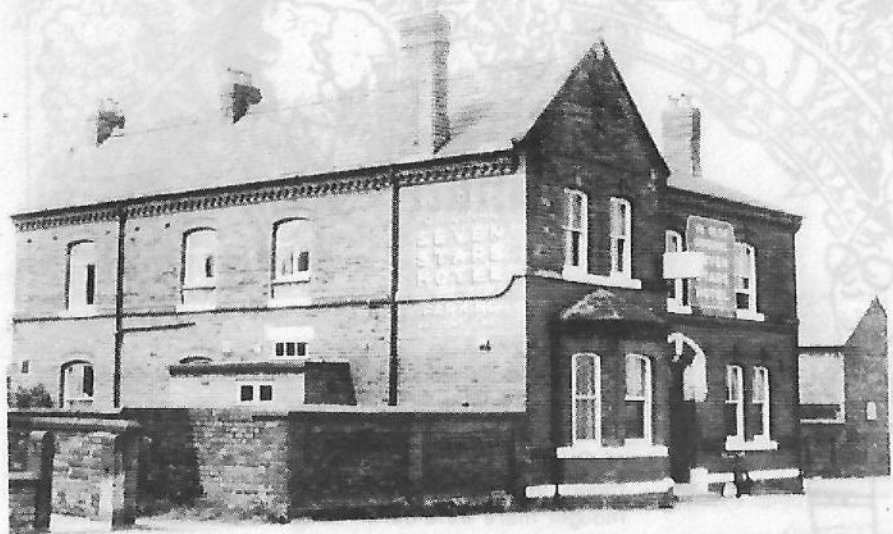
HOPS 6 varieties 2oz 32p-48p 16oz £2.40-£3.10 £23.70

We stock the better beer concentrates Kwofitt, Cumbria, Muntona, Condessa

Five makes of pressure barrels including Cornelius

For full list phone Rochdale 41590 - Callers always welcome

STANDISH PUB CRAWL




An ideal place to start a pub crawl of Standish is the Horseshoe (Nobby Clarks) - the only trouble is that you might not get anywhere else. Nobby has Burtonwood mild on handpumps and bitter on electric pumps, and if you go at the weekend there is a good old singalong. Across the road from Nobby's is the White Duck - Burtonwood bitter and mild on electric pumps. This is a cosy old pub with small rooms and, reputedly, a ghost. Ignore the Globe across the road (Matthew Brown, no real ale), carry on to the traffic lights and turn left up School Lane to the Dog and Partridge, with its cosy little lounge and large vault. Walkers bitter and Tetley mild are on handpumps, a pleasant change of brew as most pubs in Standish are Burtonwoods, who took over Almonds Brewery twelve years ago. Retrace your steps to the traffic lights and go into the Wheatsheaf for a good pint of Burtonwood bitter on electric pumps. This is the old Almonds Brewery tap; the brewery is still intact next door. The pub has plenty of old Britannia cast iron tables, a separate lounge with its own bar and is also residential.

Leaving the Wheatsheaf, turn left at the traffic lights and go down Preston Road to the Old Original Seven Stars. This is a Burtonwood house selling excellent bitter and mild on electric pumps. There is a large games room and a comfortable small lounge with a fine collection of miniatures.

After the Seven Stars, go back to the traffic lights, turn left and on the right is the Black Bull, another Burtonwood pub with excellent handpumped bitter. The landlord's son has the Kirkless Hall at Aspull, which will be S Lancs CAMRA's pub of the month this month. Cross the road for a change of brew. The Black Horse (Wilsons mild and bitter on electric pump) was the subject of a recent welcome pub swap with Burtonwood. It is not a bad place to end up - try one of Jimmy's quarter pounders.

Alan Ball



Rupert Periwinkle

There's always somebody who has to spoil everything. Poor Bilko had barely recovered from the untimely death of Boddington, when his vintage charabanc tour of Greater Grotley hostleries in the Amber Nectar toppers' vademecum took place. One would have thought there were but three contenders for the title of the Mouth of the Mersey - namely the loquacious Zimbabwe Talbot, the garrulous Bogbrush and the majestic river itself. But no, the surrogate Mr

Molyneux which Scousely imposed on us had them all "frappés dans un chapeau cocké", as they say in Frogley. Jamie Frazzle, for such was his name, had not only done everything that everyone else had done, but had done it better and first. He somewhat besmirched the image of the Campaign by bellowing in one of Snoot Magna's better hostleries, "How effin bourgeois!"

His coup de grace, however, was when he heard about a trip which all those drinking folk from CAMRA had made to the land of Hartleys many moons ago. On this occasion Duncan, who was driving, was the victim of an anacathartic traveller who sprayed the cab with gallons of vomit. Not wishing to be outdone, Jamie Frazzle, feeling replete after a visit to about the 19th tavern, perched on the platform of the ancient conveyance and emptied himself from both ends simultaneously into the Grotley twilight. What a disgusting sight! Bilko, Fiona and Tish were appalled, and have complained to Bogbrush about Mr Frazzle's intolerable behaviour, but I am afraid that this is very likely the norm in Scousely, and will not be looked down upon as it is here. I think the only solution is to send Bunty and his pals down the Scousely Road to teach them a few manners.

It has come to my notice that certain persons feel aggrieved that their worthy scribbles have not found their way into these hallowed pages. Accordingly, I would like to set aside a token space for those no doubt riveting articles, lest

LOCAL NEWS

it be felt that their local news is being kept out by meretricious nonsense inserted on the basis of bribery and nepotism rather than considered editorial judgement.

Rumour Denial

- 1) Despite the fact that he has been joined by a co-editor, Bogbrush is still persona non grata to Scousely members. Mr Nellie Tweed, his collaborator, was such a boring Jessie at Bedesville that Bogbrush is the only person who will talk to him.
- 2) No Regional Organisers at all in any shape or form have resigned at all definitely.

THE ELSIE CLOCKWORK-NUN SUPPORTERS CLUB

APPRECIATION SONG - LYRIC H HIGGINS, MUSIC SIR A SULLIVAN

To be sung to "When I was a Lad" (HMS Pinafore)

- 1 Now Elsie Nun is a damn fine lass,
She knows just how to drain her glass;
So rally round, and be her fan
For she'll wipe the floor with Trifledan.
ALL: She'll wipe the floor with Trifledan.

Chorus: She'll wipe the floor so easily
That soon she'll be Chairman of the
whole NE x2



- 2 When there's work to do she'll never flag
Like Bessie Clog or any old bag;
She Campaigns more than twenty men
And she'll wipe the floor with Tim Amsden.

ALL: She'll wipe the floor with Tim Amsden

Chorus: She'll wipe the floor..... x2

- 3 She's a reet grand girl, a proper gem,
She's better than half a dozen men,
On Elsie we've all got a crush,
Cos she'll wipe the floor with old Bogbrush.

ALL: She'll wipe the floor with old Bogbrush. ALL: She'll wipe the floor with Ian Mihell

Chorus: She'll wipe the floor..... x2

- 4 Whoever stands, they haven't a chance,
For our Elsie will lead them a proper dance,
Each one will go like a lamb to the slaughter,
She'll wipe the floor with Islam Deafwater.

ALL: She'll wipe the floor with Islam Deafwater.

Chorus: She'll wipe the floor..... x2

- 5 She's got a brain so great that she could do
All the work of tewnty-two;
The GBG, Finance as well,
She'll wipe the floor with Ian Mihell.

Chorus: She'll wipe the floor..... x2

REFRAIN

So members all, whoever you may be,
If you want a dynamic GREAT NE,
That'll all work hard till the battle's won
Make sure you support Elsie Clockwork-Nun

For she'll work so hard till the day is done,
Will our lovable, glorious Elsie Clockwork-Nun

pseud's Corner

WARRINGTON ALE : A
TALE OF ABJECT
RETRENCHMENT.

If it ever needed pro... the drinking
the

Headline in "Mersey Drinker"

Real Ale Guides

The following publications are available from Roger Hall, 123 Hill Lane, Blackley, Manchester. The guides are updated from time to time so if you know of any changes please contact the relevant branch - see Branch Diary.

REAL ALE IN HIGH PEAK & NORTH EAST CHESHIRE -

Including Marple, Hyde, Ashton, Audenshaw, Dukinfield, Stalybridge, Mossley & Denton. 10p + s.a.e.

REAL ALE IN SOUTH MANCHESTER - Gorton, Openshaw, Clayton, Didsbury, etc 10p + s.a.e.

REAL ALE IN STOCKPORT - Hazel Grove, Cheadle, Heaton Mersey, etc. 10p + s.a.e.

REAL ALE IN SALFORD - Swinton, Eccles, Irlam, Worsley 10p + s.a.e.

REAL ALE IN ROCHDALE Heywood, Littleborough, Middleton etc 10p + s.a.e.

REAL ALE IN ROSSENDALE - Bacup, Haslingden, Helmshore, Rawtenstall etc 10p + s.a.e.

INNS OF MAN - Illustrated comprehensive guide to the island's tied houses 50p + s.a.e.

REAL ALE IN TRAFFORD & HULME - Altrincham, Sale, Urmston etc. with maps 10p + s.a.e.

REAL ALE IN CENTRAL MANCHESTER A comprehensive guide to the real ale outlets within 1 mile of St Peter's Square. Map, illustrated 60p + s.a.e.

REAL ALE IN OLDHAM - Failsworth, Royton, Chadderton, Shaw, Saddleworth, 10p + s.a.e.

REAL ALE IN BURY - Ramsbottom, Radcliffe, Tottington, Whitefield, Prestwich, 10p + s.a.e.

REAL ALE IN MANCHESTER NORTH - city centre, Ancoats, Collyhurst, Newton Heath, Moston, Blackley, Cheetham etc 10p + s.a.e.

REAL ALE IN CENTRAL AND NORTH CHESHIRE - Warrington, Widnes, Runcorn, Lymm, Frodsham, Northwich, Middlewich and Winsford 10p + s.a.e.

SOUTH LANC'S ALE Leigh, Wigan, Standish, St Helens, Skelmersdale, Newton, Atherton etc. Maps, photographs 50p + s.a.e.

REAL ALE IN ST HELENS - Sutton, Peasley Cross, Thatto Heath, Moss Nook, Eccleston, Parr, etc 10p + s.a.e.

REAL ALE IN GREATER GORTLEY - Slumley, Smarmford & Slutch, Poshton & Pseudley 10p + s.a.e.

GREATER MANCHESTER GOOD BEER GUIDE A selective guide to about 1,000 pubs in Greater Manchester - Bury, Stockport, Oldham, Salford, Trafford, Wigan, Bolton, Rochdale, Leigh, Tameside, etc. 64pp. £1.00 + s.a.e.

REAL ALE IN BURY METRO A 20-page guide to Whitefield, Ramsbottom, etc, with maps, illustrated, brewery history, etc. 50p + s.a.e.

REAL ALE IN HIGH PEAK Inc. Glossop, New Mills, Whalley Bridge, Buxton 15p + s.a.e.

Pub & Brewery Histories

The following publications are available from Alan Gall, 22 Stoneleigh Drive, Stoneclough, Radcliffe, Manchester M26 9HA

SALFORD'S PUBS NO 1 95p inc postage

SALFORD'S PUBS NO 2 80p inc postage

SALFORD'S PUBS NO 3 80p inc postage

SALFORD'S PUBS NO 4 95p inc postage

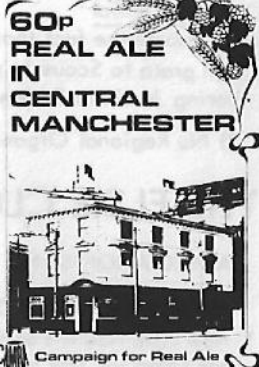
NOVEMBER SKIES (200 years of licensing in Salford) £1.44 inc post

THE PUBS OF BLACKLEY £1.20 inc post

WIGAN'S PUBS NO 1 50p inc postage

WIGAN'S PUBS NO 2 50p inc postage

THE PUBS AND BREWERIES OF MACCLESFIELD NO 1 £1.70 inc post



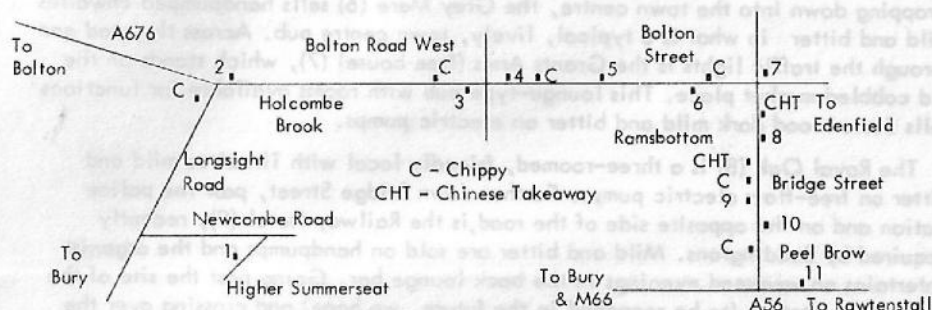
NOVEMBER SKIES



200 YEARS OF PUBLIC HOUSES
IN OLD SALFORD

£1.25

RAMSBOTTOM PUB CRAWL



The first pub, the Hamers Arms (1), is in Summerseat, a hamlet well populated by the professional level of commuters. It was recently swapped from Wilsons to Matthew Brown and mild and bitter are available from pillar taps. The second pub, up the road (15 minutes walk), is the recently converted Hare & Hounds (2), Wilsons - see June WD. Heading into Ramsbottom, the first decent pub (discounting the Whitbread en route) is the Masons (3), the first of four Thwaites houses. This is a small, compact, terraced house serving mild and bitter on electric pumps. Just across the road is the Dun Horse (Top Kicker)(4) - Thwaites mild and bitter on electric pumps again. The Dun Horse is a good example of an ex-Bury Brewery Co house, complete with a gentlemen only room and an attractively tiled bar area.



The Major (5) is a recently refurbished Whitbread house converted to Duttons Bitter. There is plenty of interest amongst the other Whitbread pubs in the area for cask beer drinkers, but regrettably no more outlets are in the pipeline at present. Dropping down into the town centre, the Grey Mare (6) sells handpumped Thwaites mild and bitter in what is a typical, lively, town centre pub. Across the road and through the traffic lights is the Grants Arms (free house) (7), which stands on the old cobbled market place. This lounge-type pub with rooms available for functions sells Burtonwood dark mild and bitter on electric pumps.

The Royal Oak (8) is a three-roomed, friendly local with Thwaites mild and bitter on free-flow electric pumps. Further down Bridge Street, past the police station and on the opposite side of the road, is the Railway Hotel (9), recently acquired by Boddingtons. Mild and bitter are sold on handpumps and the organist entertains on weekend evenings in the back lounge bar. Going past the site of the old railway station (to be reopened in the future, we hope) and crossing over the river, the Good Samaritan (10) serves handpumped Wilsons mild and bitter in pleasant, convivial surroundings. The Eagle & Child (11) (Wilson's mild and bitter on electric pumps) is at the top of Peel Brow, which is a gruelling walk up from the Good Samaritan. The bus (475) is at 23 minutes past the hour, for a door-to-door service.

Don Chattwood



HOLIDAY HAUNTS(2)

The following J W Lees pubs which offer accommodation may be of interest to those intent on facing the rigours of the Welsh pubs in the Passport scheme. The numbers refer to the Passport Scheme. Not all sell real ale.

95 Anglesey Arms Hotel, Menai Bridge, Anglesey Tel 0248712305	(hotel)
96 Bee Hotel, Market Street, Abergele Tel 0745822300	(hotel)
100 Bull Hotel, Chapel Street, Abergele Tel 0745822115	(pub)
101 Bull Bay Hotel, Amlwch, Anglesey Tel 0407830223	(hotel)
103 Crown Hotel, Llanfihangel, nr Corwen Tel 049082209	(pub)
105 Eagles Hotel, Panmachno, nr Bettws-y-Coed Tel 06903203	(pub)
106 Glanrafon Hotel, Benllech Bay, Anglesey Tel 0248742364/2687	(hotel)
108 Grouse Inn Carrog, nr Corwen Tel 049083272	(pub)
110 Holland Arms Hotel, Gaerwen, Anglesey Tel 024877651	(pub)
114 Maelog Lake Hotel, Rhosneigr, Anglesey Tel 0407810204	(hotel)
117 Owain Glyndwr Hotel, Corwen, Merioneth Tel 04902407	(hotel)
119 Red Lion Hotel, Gyffiliog, nr Ruthin, Denbighshire Tel 08246664	(pub)
123 Trearddur Bay Hotel, Trearddur Bay, Anglesey Tel 0407860301	(hotel)
125 Y Gwyn Hotel, Roewen, nr Conway Tel 049267232	(pub)
126 White Lion Hotel, Cerrig y Druidon, Corwen 049082202/82448	(pub)

Steve Lawton



Branch Diary

NORTH MANCHESTER

Weds 5 Aug. Pub crawl of Swinton. White Horse 7.00, Park 8.00

Weds 12 Aug. Committee/Social at the Queens Hall, Leeds, all welcome

Weds 19 Aug. Branch meeting, Three Crowns, Blackfriars Road, Salford 8.00

Sat 25 July. Trip to Dewsbury. 1850 from Victoria, Stalybridge 1904, Assemble Black Bull 2000 (nr town hall)

Contact Roger Hall, 740 7937 or Duncan Roberts 793 5750 for trip to Dewsbury

SOUTH LANCES

18th July Feature pub of the month: Wheatsheaf, Sutton, St Helens 2.00pm

28th July Branch meeting, Seven Stars, Wigan, 8.30pm

Contact Ian Ogden Wigan 79534

BOLTON

Weds 8 July Falcon, Kay Street. Speaker from Tetley 8.00 -

29 July Get Away From the Wedding Awayday. Ring Bert for details

Weds 12 August Branch meeting, York, Newport Street 8.00 Speaker from Burtonwood (possibly)

Contact Bert Kerks Bolton 388172

TRAFFORD & HULME

Sat 4 July 11am-5pm (licence permitting) Beer tent, Altrincham Festival

Thurs 16 July 8.00pm Branch meeting, Lloyds Arms, Higher Ormond Street, Hulme

Fri 17th July Evening coach trip to Ormskirk with local branches

Weds 22 July 8.00pm Regional Meeting, Castle, Oldham Street, Manchester

Thurs 23 July 8pm Pub of the Month with South Manchester branch. Peveril of the Peak, Great Bridgewater Street, Manchester

Thurs 6 Aug 8.00pm Committee/Social, Victoria, Victoria Street, Altrincham

Contact Mick Rottenbury 969 7013 (home)

ROCHDALE OLDHAM & BURY

Tues 14 July 8.00 Branch Meeting Napier (Thwaites), Bolton Street, Bury

Tues 28 July 8.00 Committee meeting Help Me Thro (Thwaites) Crostons Road, Bury

Tues 11 Aug 8.00 Branch Meeting Ring o Bells (Lees) St Leonards Square, Middleton

Tues 25 Aug 8.00 Committee meeting Kenyon (Wilsons) Kenyon Lane Middleton

Contact Steve Lawton 061 620 9239 or 061 236 4411 ext 7236

Subscriptions

If you want to be sure of getting What's Doing every month, why not subscribe? It costs £1.60 for six issues, postage paid. Fill in the form below and send it together with a cheque or postal order made out to "What's Doing" to Roger Hall, 123 Hill Lane, Blackley, Manchester

NAME.....

ADDRESS.....

Please send me the next six issues starting with the issue (state month)

Back Numbers

These are available from the above address at 10p a copy. Please send a large s.a.e.

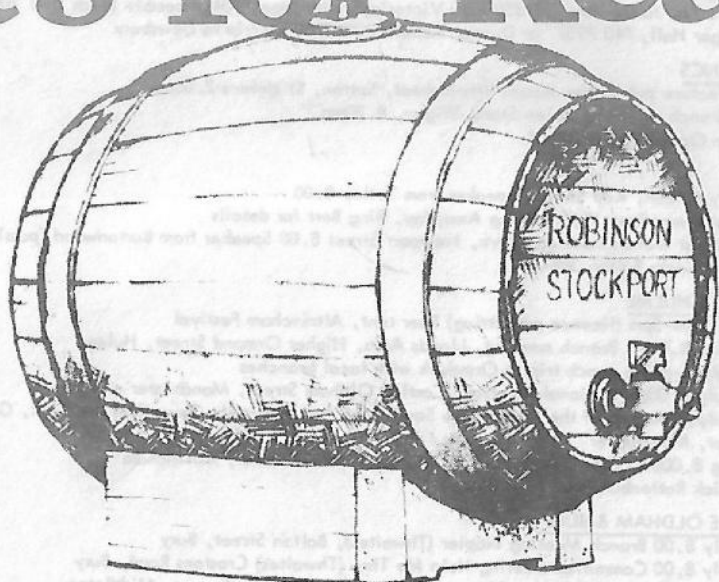
What's Doing COPY DATE for August is Thurs 23 July

What's Doing is edited by Neil Richardson, 375 Chorley Road, Swinton, Manchester M27 2AY, 061 793 5329

JOIN CAMRA

To join CAMRA send £7.00 to: Membership, CAMRA, 34 Alma Road, St Albans, Herts AL1 3BW

It's for Real



We at Robinson's think that what matters most about beer is its flavour. That's why we are still brewing beer the same way that we did a hundred years ago. Natural ingredients, the same time-honoured brewing ways, even on the same site - not many can say that!

And you can buy at least one, usually two and sometimes more of the traditional ales listed here in any Robinson's pub within 100 miles of Stockport. Not many can make that sort of claim either.

Now you can have Real Ale at home for parties or just for your own enjoyment. Available in Firkins and Pins*, complete with tap, stillage and detailed instructions. You can order from any Robinson's On or Off-Licence or Unicorn Wine Shops.

Old Tom Ale
Best Bitter Ale
Best Mild Ale



Always available from Unicorn Wine, Lower Hillgate, Stockport, (just by the Brewery) 061-480 6571. And it's the cheapest way of buying beer. A little more trouble perhaps but we think you will agree with us that it is worth it.

There are deposits on the casks, stillages and taps, returnable in full when you bring them back. You can borrow glasses, paying only for those you break or fail to return providing you also make appropriate purchases of items to fill them.

We strongly recommend that you place your order as soon as possible for Christmas or New Year use.

It's Robinson's... for Real.

**When you buy any of these Robinson's Ales,
you are buying Traditional Draught Beer
-at its very best.**