

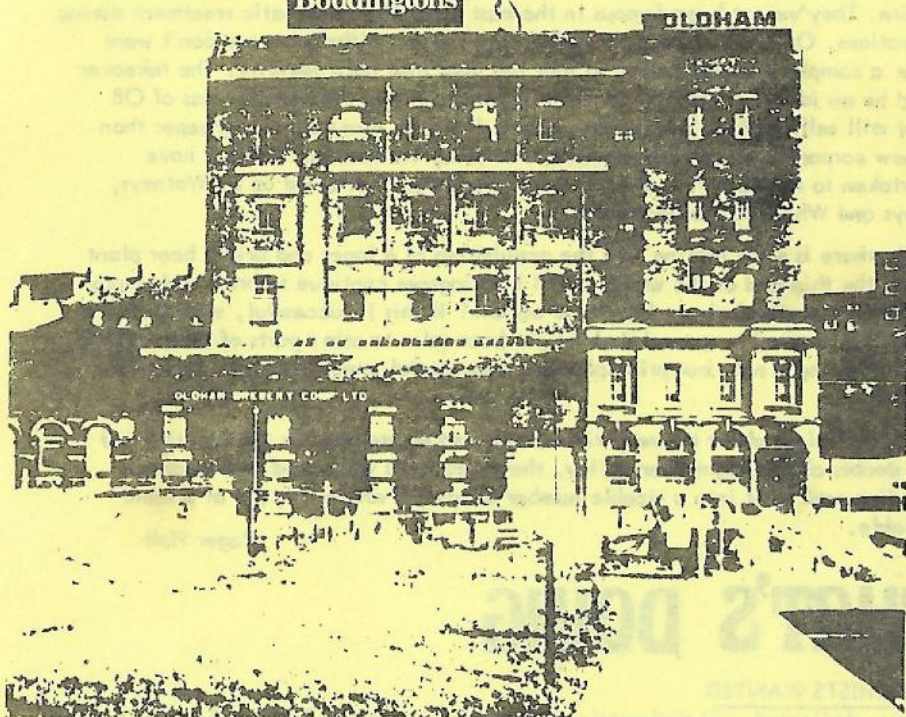
# WHAT'S DOING

FEB  
1982



THE MANCHESTER BEER DRINKER'S MONTHLY MAGAZINE

O BEE!



News of Boddingtons' takeover of Oldham Brewery will be received with mixed feelings. Although assurances have been given about the retention of OB's brewery for five years, its eventual demise seems inevitable. Strangeways has excess capacity and could supply most, if not all, of OB's pubs. Whilst the disappearance of a local brewery is always tinged with sadness, there are, nevertheless, considerable benefits from the takeover. Oldham have been pursuing a policy of bright beer



for some years. Although some of the more recent conversions have retained cask-conditioned beer, most of their tied houses serve tank beer.

It is to be hoped that Boddingtons' cask beer policy will remedy this, although problems with cellars and the costs of converting back may mean it is some time before cask beer is once again available in all the OB houses. It would be nice to think that OB's distinctive beers would become more widely available but this is unlikely.

Boddingtons' acquisition of OB's tied estate does give rise to considerable worries. When the brewery begins to examine its 84 new pubs, is it not possible that they will begin to rationalise? OB's pubs are crowded into a small area (over 70 are in Metropolitan Oldham). Some of the smaller houses have disappeared with re-development but there are still sufficient pubs to make accountants think about rationalising by closure. This would be a tremendous loss. Is it too much to hope that Boddingtons may consider the alternative - pub swaps - an ideal solution to the problem?

There is also some concern about what Boddingtons may do to the pubs they acquire. They've not been famous in the past for their sympathetic treatment during renovations. OB have not been angels in this respect either, but we don't want to see a complete Boddification so that the pubs lose their identity. The takeover would be an ideal opportunity for Boddingtons to retain the separateness of OB whilst still selling their Strangeways beers. It would also be much cheaper than the new corporate image policies which Wilsons, Walkers and Duttons have undertaken to re-identify breweries which had been swallowed up by Watneys, Tetleys and Whitbread respectively.

Finally, there is some feeling that the acquisition of a lager and bright beer plant may be the thin end of the wedge. Will Boddingtons continue to brew and market bright beer, particularly to free trade outlets? If this is successful, will they perhaps be tempted to extend their bright beer sales to other parts of their trading area? One hopes not, but principles and commercial expediency are not always compatible.

With reservations about the retention of the tied estate and the OB identity and some doubts about bright beer policy, the takeover is welcomed as a means of extending cask beer into a sizable number of outlets where it is not at present available.

Roger Hall

## WHAT'S DOING

### MASOCHISTS WANTED

Fearless, dedicated, yet diplomatic persons are required by Trafford & Hulme branch to help in pub survey work. A liking for bottled Guinness is an advantage as much work needs to be done in our tank beer/keg only outlets. Join the modern CAMRAmy and see the world, one night Trafford Park, another, Hale. Learn new skills; brick dodging in Hulme, map reading in Dunham, how to convince a 7ft x 6ft landlord his beer's rubbish and how to leave a Holts pub at 10.00pm to survey a Greenalls pub you know damn well has been fizzy for years and doesn't even stock White Shield. If you feel you have something to offer, if you want some excitement in life, telephone the

Trafford & Hulme branch contact or, better still, attend one of the meetings or social events. Don't worry, knowledge of real ale pubs is wanted as much as the others, so if you can keep us up to date with events and views in your local Boddies pub, it all helps.

#### DPA (1)

Wilsons DPA has appeared at the Rostrons Arms, Market Place, Edenfield, sold through pillar taps, like the mild and bitter. The open plan lounge has recently been partitioned off to help recreate the atmosphere lost in the previous modernisation. The new bright orange DPA ashtrays mingle with the old Watneys Red variety and there is an Olympic Bitter mirror on the wall. Only Brewers Bitter beer mats are needed to complete the Wilsons picture over the last ten years.

Wilsons have been busy in Rossendale recently, installing DPA at the Thorn, Bury Road, Haslingden, a somewhat unlikely spot. Handpumps have also appeared in place of electric pumps at the Railway Tavern, Newchurch Road, Stacksteads. Two rather impressive exterior signs have also appeared at the pub, although it's a pity that the two steam engines depicted never actually existed, let alone ran on the line which once passed the back of the pub. The previous sign also depicted a steam locomotive, named Old Warrior, which was the strong ale brewed by Beverleys, who owned the pub prior to Wilsons. Bulmers traditional cider has appeared at the Woolpack (Wilsons), Manchester Road, Haslingden, the first outlet in the valley.

#### ODD ABER ADDER

The Abercrombie, central Manchester, has a peculiar pricing policy. Chesters (traditional) bitter is 52p a pint, Chesters (fizzy) mild is 50p a pint and a pint of mixed is 54p!

#### MORE GREENALLS KEG MILD

More and more Greenalls pubs seem to be turning to keg mild as cask sales dwindle. The Ancoats now serves only cask bitter, leaving the River and the Jersey Lily as the only cask mild outlets in Ancoats. In Pendleton, the Beehive has joined the Unicorn as a draught bitter house. In Metropolitan Salford, once a Greenalls stronghold, there are now only eight pubs which serve cask conditioned mild and this is likely to deteriorate until the beer is no longer available. The reason lies as much in the erosion of price differentials as in Greenalls' policy towards cask beers. Whilst mild is only 4% cheaper than bitter its future must remain in jeopardy.

#### NUMBER THREE

Youngers No 3 (handpumped) is now available at the Duke of Wellington, Grange Road, Helmshore, where it joins Youngers Scotch bitter (electric pumps) and Taylors best bitter (handpumps).

No 3 has replaced the fizzy Newcastle Bitter at the Market Hotel, Wigan, joining Scotch bitter and IPA. The Scotch is 56p a pint, No3 and IPA, 60p.

#### ILLAWALLA ALE?

The owners of the Illawalla Country Club near Poulton-le-Fylde plan to set up a brewing operation in converted stables behind the club. Three people will be employed to produce 50 barrels of "traditional" ale a week initially, although the capacity of the brewery will be 80 - 100 barrels. The products of the brewery will be sold in the club alongside the existing range of keg beer and lagers. Details of the proposed beers have yet been released but it is known that Marston's and Bathams are amongst the breweries that have advised on the project.



Local residents are presently opposing the planning application on the grounds of noise and smell but it is claimed by the owners that these will be non-existent.

#### REGENT ROAD

Compensation for the Borough amounted to £36,500 and for the Gas Tavern £41,000

#### KEEP FIT CORNER

If you're the sporty type, keep free the lunchtime of Sunday February 14th. To avoid being massacred by the locals of the Bakers Arms, Pownall Road, Altrincham, Trafford & Hulme require CAMRA members and sympathisers with some skills in cards, dominoes, darts and pool. So if you can tell a trump from a fart, count up to six, hit a barn door at three paces or know that a cue is not something you do to get out of Tesco's, you'll do for us. See branch diary for details.

#### BIRD CHANGES HANDS

Late November saw Alan and Lesley Burns take over at the Bird in Hand, Liverpool Road, Patricroft (Holts). The pub has been redecorated and there are medium-term plans to develop the spare land at the rear of the premises as a beer garden. The pub has changed from being managed to a tenancy, though managed house prices are to be retained for the time being.

#### DOWN GRADE

A word of warning for anyone intending to follow in the footsteps of August Helms from the U S of A (WD Dec). The Burtonwood in the Ups 'n' Downs, Stockport is all fizz. The only traditional Burtonwood available in Stockport is in the Golden Lion, Hillgate.

#### CIDER

The only Holts pub not in Greater Manchester, the Black Dog at Belmont, is now selling handpumped Bulmers cider, presumably to compete with the Wilton Arms down the road, which also sells Bulmers as well as Hartleys XB and Duttons bitter.

#### AMBER NECTAR NEWS

The Railway, Ainsworth Road, Radcliffe, now sells Duttons bitter on handpump. The first week's sales were well above the normal week's Trophy sales, not surprisingly. The Robin Hood, a large lounge pub on Market Street, Tottington, now offers Hartleys XB, which is proving very popular.

Following the recent change in landlord at the Derby on Derby Street, Bolton, the Duttons bitter has been replaced by Hartleys XB. Supplies of cask bitter, then Duttons bitter were always intermittent, and the problem continues with the Hartleys.

The Whitbread cask revolution has reached Whitefield. Three pubs, all on the main road, are selling handpumped Duttons bitter: the Bulls Head, the Bee Hive and the Derby Arms.

The Kings Arms, Tyldesley has been closed for about a year and now, gutted and much improved in a plush style (especially for Bongs), it has reopened as Buckleys. The pub sells Duttons bitter, Hartleys XB and Castle Eden bitter, together with Bulmers Cider, all on handpump. Tyldesley has now become a very interesting drinking area with Holts, Wilsons, Tetley and Greenalls in the pubs and Lees and Hydes in nearby clubs.

## DPA (2)

Wilsons DPA is now available in cask form on handpumps at the Rams Head on Hillgate, Stockport and at the Old Grey Horse on Wilmslow Road, Didsbury.

## WILSONS DISAPPEARING MILD

Two more Wilsons pubs in Tameside have dropped cask mild for the chilled and filtered version. - The Commercial Hotel on Melbourne Street in Stalybridge and the Royal Albert on Hamnett Street in Hyde.

## ORDSALL CHANGES

The Ordsall, Ordsall Lane, Salford, has dropped the price of draught beers by 5p per pint at lunchtimes. This will supplement the other recent new attractions, including a new ceiling, installed by landlord Alan Johnson, an organ and the excellent DPA.

## OPEN AGAIN

The Bolton Arms (Youngers), New Bridge Street, Manchester has reopened. The pub was closed for three weeks after the last licensee died.

## NAVIGATION CHANGES TACK AGAIN

The Navigation, Hyde, continues on its bewildering way, having changed, in the recent past, from a free house selling Thwaites, Boddingtons and Pollards to a loosely "tied" house selling Watney-related products (Wilsons, Trumans, Websters). Now it appears to be back to the standard free house format with Thwaites and Saxon Cross. Promised for the near future is Timothy Taylors - a definite bonus for Tameside drinkers.

## SOUTH LANCs PUB OF THE YEAR

This prestigious award has fallen to last year's runner up, the Park Hotel, Wigan, handily adjacent to the bus station. During 1981 the Park changed from Tetley-Walker back to Peter Walker and is now selling handpumped Walkers mild, bitter and best bitter. By an old trading agreement, the Park also sells draught Bass and is the only outlet for this beer in Wigan centre. Mrs Brown runs the pub excellently along traditional lines, with roaring coal fires and waitress service, a rarity these days.

The two runners up this year were both Burtonwood houses; the Worthington, Hindley, with its reputation for good food (especially Sunday lunch) and beer from newly-installed beer engines, and the pleasantly refurbished and extended Old Pear Tree, Frog Lane, Wigan. Unfortunately neither of these yet sell light mild.

## WHY NOT

The Bradford Arms, Ashton New Road, reopened just before Christmas as the Why Not? It is a free house, selling Tetley mild and bitter and Boddingtons bitter on handpumps. It's a good pint in a pleasantly decorated and well laid out lounge. There's the ubiquitous pool table in the back and home made lunches are served from 12.00 til 2.00pm.

## SHUT

The Bridge, Moss Lane, Aittrincham (belonging to Bass NW) and the Bulls Head, Chester Road, Cornbrook, Hulme (Whitbread) were both very much closed in January. We await with interest to see whether the respective breweries have honourable intentions.

### HORSE TAKING WALKER

Walkers best bitter is now available at the White Horse, Liverpool Road, Irlam (handpumped Tetleys), coming in as a sort of super-sub for the now defunct Walkers Warrington Ale. This long-established Lancashire brew has proved a welcome newcomer and should become a permanent member of the team. Other Walkers beers may be introduced shortly, giving a comprehensive selection of the traditional ales available from the Warrington brewery. You never know, the White Horse could become Tetley-Walker's first true Tetley-Walker pub- at least in the Manchester area.

### KNIBBLERS

Knibblers in Horwich has now added Bass 4X mild to the cask bitter already on sale. It knibbles a nice hole in your pocket too, at 54p a pint.

### HANDPUMPS

Tetleys have installed handpumps at the Grey Man, 90 Hindley Road, Daisyhill.



### PUB OF THE MONTH

The South Manchester Pub of the Month for February is the Derby, Exbury Street, Fallowfield, Manchester 14 (off Ladybarn Lane). The Derby serves Wilsons mild and bitter on handpump and is a lively two-roomed pub with an active vault and thriving football, darts and crib teams (all currently top of their leagues!)

The pub has been managed for the past three years by Frank and Eileen Gunn, who moved from the Rising Sun in Manchester.

Tastefully refurbished some four years ago, the Derby is one of that dying breed of pubs - a friendly, terraced local. The presentation night on Thursday, February 25th promises to be a first-class 'do', to which all members and friends are warmly invited.

Contributors: Don Chattwood, David Rowlinson, Brian Gleave, Humphrey Higgins, Dave Hale, B J Brownsword, Roger Bullock, Roger Hall, Paul Roberts, Jimmy Ribble, Mick Rottenbury, Duncan Roberts



Following its temporary closure, the upper lounge bar of the Seven Oaks, Nicholas Street (Bass and Chesters bitter on handpumps) is now open again with its selection of hot lunches and snacks. The room has gained a piano in one corner, but unfortunately the meal preparation is now carried out within the dining area, where the sight and smell of cooking is not in harmony with the serenity of this city centre "hide-away". However, the Bass maintains its customary high standard.

\*\*\*\*\*

Until recently, travellers passing through the portals of Manchester Victoria had the choice of two real ales in the ornate surroundings of the station bar. Boddingtons bitter was originally partnered by Lees bitter, which gave way to Wilsons bitter. Today only Boddies remains to compete with a variety of gaseous liquids. British Rail cannot even find a pump clip to advertise its presence, with merely a tatty strip of labelling tape on the handpump. Unless prior knowledge or a keen eyesight prompts a request for Boddingtons, any cry for a "pint of bitter" is met with a lunge towards the Snots button.

\*\*\*\*\*

A recent report emanating from the Waggon and Horses, Southgate, speaks of keg mild having replaced the "real" version. Apparently it's the familiar story of low demand leading to a difficulty in keeping the condition of the beer. One would like to think they had considered ordering smaller amounts.

\*\*\*\*\*

The city centre has two new suppliers of draught takeaway beer. "Odd Bins" have opened a branch in Cooper Street and are offering polypins, etc., of Arkells, Batemans XB, Fullers, Greene King Abbot and Wadworth 6X. Prices and ordering details not yet available.

Elsewhere in the city, Safeways, that American equivalent of the corner shop, are offering firkins and polypins of the Odd Bins range plus various brews of Brains, Felinfoel, Devenish, Everards, Gibbs Mew, King & Barnes, Marstons, Paines, Raven, Ruddles, Sam Smiths and Tolly Cobbold. Prices indicate that you pay a premium for the exotic nature of the brews available, as the cost per pint is much the same as the pub price.

\*\*\*\*\*

### CITY CENTRE GOOD BEER GUIDE ENTRIES

We are enlisting the help of CAMRA members who work and drink in the centre of Manchester. In any working day, central Manchester contains many CAMRA members who belong to branches other than North Manchester, Trafford & Hulme and South Manchester, those that currently make the selection for the GBG. City Desk is collecting the recommendations of these members for submission to the Regional Committee when the GBG entries are due. Please ring Geoff Williamson, Bernie Brownsword or Paul Swann on 236 3377 x2391 and tell us about the pubs you think should be considered for the GBG. (Full list printed elsewhere in this issue).



# Real Ale Guides

The following publications are available from Roger Hall, 123 Hill Lane, Blackley, Manchester. The guides are updated from time to time so if you know of any changes please contact the relevant branch - see Branch Diary.

**REAL ALE IN SOUTH MANCHESTER** - Gorton, Openshaw, Clayton, Didsbury, etc 10p + s.a.e.

**REAL ALE IN STOCKPORT** - Hazel Grove, Cheadle, Heaton Mersey, etc. 10p + s.a.e.

**REAL ALE IN SALFORD** - Swinton, Eccles, Irlam, Worsley 10p + s.a.e.

**REAL ALE IN ROCHDALE** Heywood, Littleborough, Middleton etc 10p + s.a.e.

**REAL ALE IN ROSSENDALE** - Bacup, Haslingden, Helmshore, Rawtenstall etc 10p + s.a.e.

**INNS OF MAN** - Illustrated comprehensive guide to the island's tied houses 50p + s.a.e.

**REAL ALE IN TRAFFORD & HULME** - Altrincham, Sale, Urmston etc. with maps 10p + s.a.e.

**REAL ALE IN CENTRAL MANCHESTER** A comprehensive guide to the real ale outlets within 1 mile of St Peter's Square. Map, illustrated 60p + s.a.e.

**REAL ALE IN OLDHAM** - Failsworth, Royton, Chadderton, Shaw, Saddleworth, 10p + s.a.e.

**REAL ALE IN BURY** - Ramsbottom, Radcliffe, Tottington, Whitefield, Prestwich, 10p + s.a.e.

**REAL ALE IN MANCHESTER NORTH** - city centre, Ancoats, Collyhurst, Newton Heath, Moston, Blackley, Cheetham etc 10p + s.a.e.

**REAL ALE IN CENTRAL AND NORTH CHESHIRE** - Warrington, Widnes, Runcorn, Lymm, Frodsham, Northwich, Middlewich and Winsford 10p + s.a.e.

**SOUTH LANCs ALE** Leigh, Wigan, Standish, St Helens, Skelmersdale, Newton, Atherton etc. Maps, photographs 50p + s.a.e.

**REAL ALE IN ST HELENS** - Sutton, Peasley Cross, Thatto Heath, Moss Nook, Eccleston, Parr, etc 10p + s.a.e.

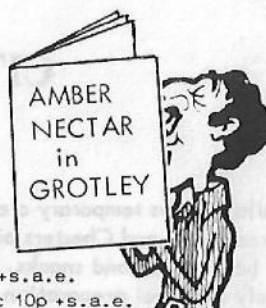
**REAL ALE IN GREATER GROTLEY** - Slumley, Smarmford & Slutch, Poshton & Pseudley 10p + s.a.e.

**GREATER MANCHESTER GOOD BEER GUIDE** A selective guide to about 1,000 pubs in Greater Manchester - Bury, Stockport, Oldham, Salford, Trafford, Wigan, Bolton, Rochdale, Leigh, Tameside, etc. 64pp. £1.00 + s.a.e.

**REAL ALE IN BURY METRO** A 20-page guide to Whitefield, Ramsbottom, etc, with maps, illustrated, brewery history, etc. 50p + s.a.e.

**REAL ALE IN N.W. DERBYSHIRE** - Buxton, Glossop, New Mills, Whaley Bridge, Disley, Chapel-en-le-Frith, etc. 10p + s.a.e.

**REAL ALE IN HIGH PEAK & N E CHESHIRE (TAMESIDE)** - Marple, Hyde, Denton, Ashton, Dukinfield, Stalybridge, etc 10p + s.a.e.



## Pub & Brewery Histories

The following publications are available from Alan Gall, 22 Stoneleigh Drive, Stoneclough, Radcliffe, Manchester M26 9HA

**SALFORD'S PUBS NO 1** 95p inc postage

**SALFORD'S PUBS NO 2** 95p inc postage

**SALFORD'S PUBS NO 3** 80p inc postage

**SALFORD'S PUBS NO 4** 95p inc postage

**NOVEMBER SKIES** (200 years of licensing in Salford) £1.44 inc post

**THE PUBS OF BLACKLEY** £1.20 inc post

**WIGAN'S PUBS NO 1** 50p inc postage

**WIGAN'S PUBS NO 2** 50p inc postage

**THE PUBS AND BREWERIES OF MACCLESFIELD NO 1** £1.70 inc post

**MANCHESTER BREWERIES NO 1** £1.20 inc post

**WHERE HAVE ALL THE BREWERIES GONE?** £3.75 inc post

**THE PUBS OF SWINTON & PENDLEBURY** £2.25 inc post

**A HISTORY OF PRESTWICH PUBS** £1.75 inc post

**60p REAL ALE IN CENTRAL MANCHESTER**



Campaign for Real Ale

**NOVEMBER SKIES**



200 YEARS OF PUBLIC HOUSES IN OLD SALFORD £1.75





# REAL ALE in ROCHDALE



INCLUDING HEYWOOD, MILNROW, MIDDLETON,  
LITTLEBOROUGH

ROCHDALE AREA (Including Castleton, Bamford, Norden, Healey, Whitworth & Facit)

Albert	Spotland Road	Centre	Wilsons	M, B(H)
Alpine Ayingerbrou	Gasthof Whitworth Road	Centre	Sam Smiths	B(H)
Baths	Smith Street	Centre	Boddingtons	M, B, SA(E/G)
Baum	Toad Lane	Centre	Boddingtons	B(H)
Bonnie Dundee	Fishwick Street	Lower Place	Boddingtons	B(E)
Blue Pits	Manchester Road	Castleton	Lees	M, B(E)
Bridge Inn	Manchester Road	Castleton	Thwaites	M, B(E)
Bridge Inn	Edenfield Road	Norden	Bass	4X(E)
Bridge Hotel	College Road	Centre	Bass	CB, 4X(E)
Bishop Blaize	Oldham Road	Lower Place	Bass	4X(E)
Britannia	Jermyn Street	Centre	Wilsons	B(H)
Brownhill	Heights Lane	Fallinge	Sam Smiths	B(H)
Brunswick	Baillie Street	Centre	Thwaites	M, B(H)
Blue Ball	Edenfield Road	Norden	Wilsons	M, B(H)
Cemetery	Bury Road	Roch Valley	Rob'sons, Bodd, Marstons, Taylors	M, B, Porter(H)
Cross Yates	Whitworth Road	Centre	Holts	M, B(H)
Commercial	Manchester Road	Castleton	Bass	4X(E)
Carters Rest	Spotland Road	Centre	Wilsons	M, B(H)
Castle	Manchester Road	Centre	Wilsons	M, B(E)
Church	Willbuts Lane	Cutgate	Wilsons	M, B(H)
Cloverdale	Entwistle Road	Centre	Wilsons	M, B(H)
Commercial	Milnrow Road	Centre	Lees	M, B(H)
Crawford Arms	Crawford Street	Lower Place	Lees	M, B(E)
Crown & Shuttle	Milnrow Road	Firgrove	Lees	M, B(E)
Craven Heifer	Broad Lane	Buersil	Wilsons	M, B(H)
Drake Hotel	Drake Street	Centre	Bass	4X(E)
Directors Arms	Heywood Old Road	Castleton	Bass	4X(E)
Derby Arms	Whitehall Street	Centre	Wilsons	M, B(E)
Dicken Green	Queensway	Ashfield Valley	Lees	M, B(E)
Entwistle	Halifax Road	Hamer	Thwaites	M, B(H)
Flying Horse	Town Hall Square	Centre	Wilsons	M, B(H)
Farewell	Manchester Road	Castleton	Greenalls	M, B(E)
Gale	Whitworth Road	Shawclough	Bass	CB, 4X(E)
Gale Inn	Valley Road	Ashfield Valley	Bass	TL, 4X(E)
George & Dragon	Manchester Road	Castleton	Bass	Bass, 4X(E)
Grapes	Norden Road	Bamford	Bass	CB, 4X(E)
Greengate	Halifax Road	Smallbridge	Wilsons	M, B(H)
Highland Laddie	Spotland Road	Centre	Lees	M, B(E)
Harrows	Bolton Road	Marland	Bass	TL, 4X(E)
High Sheriff	Halifax Road	Hamer	Thwaites	M, B(E)
Horse and Farrier	Edenfield Road	Norden	Wilsons	M, B(H)
Hare and Hounds	Syke Road	Syke	Wilsons	M, B(E)
Hare and Hounds	Bury & Rochdale Old Rd	Bamford	Thwaites	M, B(H)
Hare and Hounds	Belfield Road	Centre	Boddingtons	M, B(E)
Healey	Shawclough Road	Lower Healey	Robinsons	M, B, SA(H/G)
Industry	Sladen Street	Centre	Bass	CB, 4X(E)
Junction	Bolton Road	Castleton	Thwaites	M, B(E)
Lark Inn	Durham Street	Centre	Bass	4X, CB(E)
Lord Howard	The Strand	Castleton	Bass	CB, 4X(E)
Lord Nelson	Milnrow Road	Firgrove	Whitbread	DB(H)
Mayfield	Albert Royds Street	Belfield	Bass	4X(E)
Martins Nest	Brimrod Way	Sudden	Wilsons	M, B(H)
Mark Twain	Whitworth Road	Centre	Thwaites, Robinsons	M, B, SA(H/G)
Nell Rackers	Baillie Street	Centre	Bass	Bass(H)
New Bricklayers	Whitworth Road	Centre	Wilsons	B(H)
New Inn	Manchester Road	Castleton	Thwaites	M, B(E)
Navigation	Drake Street	Centre	Boddingtons	B(H)
Oxford	Whitworth Road	Lower Healey	Matthew Brown	M, B(E)
Railway	Yorkshire Street	Centre	Bass	4X(E)
Royds Arms	Roadley Moor Road	Spotland	Bass	CB, 4X(E)

Regent	Regent Street	Centre	Wilsons	M, B(H)
Reed Hotel	Yorkshire Street	Centre	Bass	CB, 4X, Bass(E/H)
Royal	Oldham Road	Buersil	Thwaites	M, B(H)
Sawyers	Whitehall Street	Centre	Thwaites	M, B(E)
Spread Eagle	Cheetham Street	Centre	Wilsons	M, B(H)
Spring Inn	Broad Lane	Buersil	Lees	M, B(E)
Success to the Plough	Bolton Road	Marland	Lees	M, B(E)
Tophams Tavern	Smithybridge Road	Smallbridge	Boddingtons	B(E)
Top House	Manchester Road	Castleton	Bass	4X(E)
Two Ships	Hape Street	Centre	Thwaites	M, B(H)
White Lion	Rooley Moor Road	Spotland	Wilsons	M, B(H)
Wagon and Horses	Halifax Road	Smallbridge	Bass	CB, 4X(E)
Woolpack	Halifax Road	Smallbridge	Bass	4X(E)
Woolpack	Drake Street	Centre	Bass	CB, 4X, Bass(E)
Weavers	Ashfield Road	Deeplish	Lees	M, B(E)
Wellfield	Wellfield Street	Lower Place	Lees	B(H)
White Lion	Yorkshire Street	Centre	Thwaites	M, B(H)
Windmill	Bolton Road	Sudden	Wilsons	M, B(H)

#### HEYWOOD AREA (Including Birtle, Cheesden and Pilsworth)

Bay Horse	Torrington Street	Hopwood	Whitbread	DB(H)
Black Bull	Rochdale Road East	Centre	Bass	4X(E)
Britannia	Bridge Street	Centre	Bass	CB, 4X(E)
Brown Cow	Bamford Road	Centre	Bass	4X(E)
Black Swan	Middleton Road	Hopwood	Thwaites	B(H)
Brunswick	Bridge Street	Centre	Burtonwood	M, B(H)
Criterion	Argyle Street	Darn Hill	Marstons	M, B(E)
Hare and Hounds	Green Lane	Hopwood	Wilsons	M, B(E)
Kings	Market Place	Centre	Thwaites	M, B(H)
Langton Arms	Miller Street	Centre	Wilsons	M, B(E)
New Inn	Edenfield Road	Cheesden	Bass	CB, 4X(E)
Newmarket Hotel	Hind Hill Street	Centre	Bass	4X(E)
Navigation	Manchester Street	Centre	Bass	4X(E)
Owd Betts	Edenfield Road	Cheesden	Greenalls	M, B(E)
Oddfellows Arms	Peel Lane	Centre	Wilsons	M, B(E)
Our House	Manchester Street	Centre	Bass	4X(E)
Pack Horse	Elbut Lane	Birtle	Lees	M, B(H)
Starkey Arms	Manchester Road	Centre	Bass	4X(E)
Stonemasons	Bury Street	Summit	Thwaites	M, B(E)
Tophams Tavern	Dawson Street	Centre	Boddingtons	B(E)
Tanners Arms	Rochdale Road East	Centre	Bass	4X(E)
Three Arrows	Pilsworth Road	Three Lane Ends	Lees	M, B(E)
Woolpack	Birch Street	Centre	Bass	TL, 4X(E)

#### MILNROW AREA (Including Newhey)

(Bottom) Bird in Hand	Huddersfield Road	Newhey	Sam Smiths	B(H)
(Top) Bird in Hand	Huddersfield Road	Newhey	Sam Smiths	B(H)
Free Trade Tavern	Newhey Road	Centre	Lees	M, B(E)
Gallows	Kiln Lane	Cross Gates	Bass	4X, CB(E)
Ladybarn	Harbour Lane	Centre	Boddingtons/Taylor	B(H)
Tim Bobbin	Dale Street	Centre	Wilsons	M, B(H)
Wagon	New Street	Centre	Burtonwood	M, B(H)
Wagon and Horses	Newhey Road	Newhey	Lees	M, B(E)

#### LITTLEBOROUGH AREA (Including Wardle, Calderbrook, Dearnley and Summit)

Caldermoor	Calderbrook Road	Caldermoor	Wilsons	M, B(H)
Dog & Partridge	Todmorden Road	Summit	Wilsons	M, B(H)
Falcon	Church Street	Centre	Tetley	M, B(H)
Globe	Wardle Road	Wardle	Wilsons	M, B(E)
Gale Inn	Todmorden Road	Gale	Bass	4X(E)
Hare and Hounds	Ramsden Road	Wardle	Wilsons	M, B(H)
Huntsman	Summit Road	Summit	Bass	CB, 4X(E)
Lydgate	Blackstone Edge Old Rd	Lydgate	Boddingtons	B(H)
New Inn	New Road	Dearnley	Bass	CB, 4X(E)



Ox and Plough	New Road	Dearnley	Bass	CB, 4X(E)
Queens	Church Street	Centre	Thwaites	M, B(H)
Railway Inn	Ingham Lane	Centre	Bass	CB, 4X(E)
Royal Oak	Church Street	Centre	Bass	CB, 4X(E)
Red Lion	Blackstone Edge Road	Centre	Wilsons	M, B(E)
Summit Inn	Summit Road	Summit	Bass	CB, 4X(E)
White House	Blackstone Edge Road	Blackstone Edge	Wilsons	M, B(H)

**MIDDLETON AREA (Including Middleton Junction, Rhodes, Slattocks and Alkington)**

Albion	Wood Street	Centre	Boddingtons	M, B(H)
Assheton Arms	Market Place	Centre	Lees	M, B(H)
Apple and Pear	Mainway East	Alkington	Lees	M, B(H)
Bricklayers	Market Place	Centre	Bass	TL(E)
Brewers Arms	Cheapside	Centre	Wilsons	M, B(H)
Boarshaw Hotel	Stanycliffe Lane	Boarshaw	Lees	M, B(E)
Britannia	Manchester Old Road	Centre	Lees	M, B(E)
Brunswick	Townley Street	Centre	Wilsons	M, B(H)
Cotton Tree	Boarshaw Road	Boarshaw	Lees	M, B(E)
Crown	Long Street	Centre	Lees	M, B(B)
Carters Arms	Manchester Old Road	Rhodes	Lees	M, B(E)
Dog and Partridge	Spring Vale	Tonge	Oldham	M, B(E)
Firwood	Joshua Lane	Middleton Junction	Lees	M, B(B)
Gardeners Arms	Sandy Lane	Middleton Junction	Lees	M, B(E)
Gardeners Arms	Manchester Old Road	Rhodes	Boddingtons	B(H)
Gardeners Arms	Grimshaw Lane	Middleton Junction	Lees	M, B(E)
Hopwood Arms	Manchester Road	Slattocks	Wilsons	M, B(H)
Hare and Hounds	Oldham Road	Tonge	Thwaites	M, B(E)
Hare and Hounds	Long Street	Centre	Lees	M, B(B)
Junction	Grimshaw Lane	Middleton Junction	Lees	M, B(E)
Jolly Carters	Oldham Road	Tonge	Lees	M, B(H)
Jolly Butcher	Heywood Old Road	Bowlee	Bass	CB, 4X(E)
Kernon	Kernon Lane	Tonge	Wilsons	M, B(H)
Kings Arms	Higher Wood Street	Centre	Wilsons	M, B(E)
Lancashire Fold	Kirkway	Alkington	Lees	M, B(E)
Middleton Archer	Kemp Street	Centre	Lees	M, B(E)
Mallard	Windermere Road	Langley	Wilsons	M, B(H)
Minders Arms	Joshua Lane	Middleton Junction	Lees	M, B(E)
Nowster	Oldham Road	Tonge	Lees	M, B(E)
Oddfellows	Oldham Road	Tonge	Wilsons	M, B(E)
Old Cock	Oldham Road	Mills Hill	Lees	M, B(E)
Roebuck	Kirkway	Alkington	Whitbread	DB(H)
Rodcliffe Arms	Grimshaw Lane	Middleton Junction	Burtonwood	M, B(E)
Railway and Linnet	Grimshaw Lane	Middleton Junction	Lees	M, B(E)
Railway	Townley Street	Tonge	Wilsons	M, B(H)
Ring o' Bells	St Leonards Square	Centre	Lees	M, B(E)
Red Lion	Hollins Lane	Hollins	Boddingtons	M, B(E)
Royal Oak	Boarshaw Road	Boarshaw	Lees	M, B(E)
Ship Inn	Rochdale Road	Slattocks	Lees	M, B(H)
Three Arrows	Middleton Road	Rhodes	Boddingtons	M, B(E)
Tandle Hill Tavern	Thornham Lane	Tandle Hills	Lees	M, B(H)
Whitbrook	Boarshaw Road	Boarshaw	Bass	4X(E)
White Hart	Heywood Old Road	Birch	Bass	Bass, 4X(E)
Wilton Arms	Manchester Old Road	Rhodes	Boddingtons	M, B(E)
Wagon and Horses	Manchester Old Road	Rhodes	Boddingtons	B(H)
White Hart	Long Street	Centre	Lees	M, B(E)
Who'da Thowt It	Wood Street	Centre	Lees	M, B(E)

M=mild, B=bitter, E=electric pump, H=handpump, G=gravity, SA=strong ale, CB=Bass Cask Bitter, 4X=Bass best mild, Bass=draught Bass, TL=Bass Toby Light, DB=Whitbread Duttons Bitter

# LONDON DRINKING

With beer prices on the ever upwards spiral, the 50p + pint is commonplace in many Greater Manchester outlets not belonging to the local independent breweries. Perhaps we should spare a thought for the poor old London drinkers. A random survey of a few London and south east pubs is given below; all were visited around New Year. When comparing prices, remember to take into account the gravity of the beer and, in the case of free houses, where the beer comes from.

Pub	Location	Brewery	Beer	o.g.	Price
Nags Head	Hampstead	free Chudley	Lords	1050	72p
			Local Line	1038	64p
Holly Bush	Hampstead	tied Ind Coope	Bitter	1037	63p
Flask	Hampstead	tied Youngs	Bitter	1036	58p
			Special	1046	62p
			Malt	1030	50p
King of Bohemia	Hampstead	tied Wethereds	Bitter	1036.6	67p
Duke of Wellington	Kings Cross	tied Charrington	IPA	1039.5	66p
Eagle	Brighton	free Old Chidham	Bitter	1042	62p
		Raven	Bitter	1039	64p
		King & Barnes	Bitter	1034.9	60p
Basketmakers	Brighton	tied Gales	Bitter	1037	56p
			HSB	1051	66p
Lord Wellington	WC1	free Ringwood	Bitter	1040	60p
Market Trader	SE1	free Rayments	BBA	1036	65p
		Borough	Bitter	1040	60p
Dive Bar	SE1	free Hall & Woodhouse	BBB	1041	60p
		Everards	Tiger	1041	60p
Argyll	Henley on Thames	tied Morland	Bitter	1035	54p
Three Tuns	Henley on Thames	tied Brakspears	Bitter	1035	64p
Angel on the Bridge	Henley on Thames	tied Brakspears	Bitter	1035	64p
Sun	WC1	free Gibbs Mew	Premium bitter	1039	70p
		Eldridge Pope	Dorchester b	1032.5	68p
		Brains	Dark (mild)	1035	72p
		Devenish	Bitter	1032	54p
		Felinfoel	Double Dragon	1040	70p
		Marstons	Pedigree	1043	78p
		Marstons	Owd Rodger	1080	1.10p
Lamb	WC1	tied Youngs	Bitter	1036	57p
			Special	1046	63p
			Malt	1030	48p
Fox & Firkin	Lewisham	tied Bruce's	Bitter	1045	65p
Roebuck	Lewisham	tied Fullers	London Pride	1041.5	65p
Duke of Cambridge	Lewisham	tied Taylor Walker	Bitter	1037	61p
Potters Bar	Kings Cross	free Ruddles	Blue	1032	57p
The Fountain	Trafalgar Square	free Corporation	Pop	1000	00p

The average price works out at 66p, but falls to 64p if the seven beers at the Sun are missed out. The Sun has the largest choice of all the pubs in London - usually around 20 - and charges for the privilege. The Devenish bitter appeared to be the pub's loss leader at 54p, and it was cloudy as well. All the other beers were at least 10p more

expensive. Seats are also a very elusive commodity. Virtually all the pubs are furnished to a much higher standard than the average local pub. The three pubs visited in Henley on Thames seemed to sum up the Brakspears monopoly. They charged 10p more than the out-of-town brewery, Morland, who have just the one pub.

Bruce's various home brew pubs are of a type not found in Greater Manchester. The price of a pint was fairly average for the area, but as overheads are low a lot of profit is being made. The pub in Lewisham is something similar to a Yates Wine Lodge; the Sunday lunchtime was very popular and the wide range of good food was reasonably cheap, even by local standards.

If in London, as a general guideline avoid the really trendy pubs and free houses and you won't get ripped off too badly. If in doubt make sure you've got your Access card ready. If you think the beer prices are bad, the average price of national brand lagers was 70p-75p. As well as your Access card, you will also require your head examining if you want to drink lager.

Don Chattwood

## BASS SURVEY

CAMRA is hoping to persuade Bass to provide cask conditioned Stones in the Manchester area and so the local branches are finding out what the landlords think. As usual, those sturdy chaps from North Manchester were first off the mark. This is their story..

Nineteen pubs were checked out; ten landlords said they would take cask Stones if it was offered, three wouldn't and six didn't know.

### The Definites

**TOWN HALL** (City Centre): The landlord was very doubtful that he would be offered cask Stones because he had been refused Cask Bitter, but he would be willing to take it on trial provided it was served by handpump to distinguish it from the fizz. He currently sells draught Bass but believes the brewery is embarked on a policy to get rid of the beer, with such ploys as reducing the period allowed for returning beer and by making licensees pay for their own spare parts for pumps, etc.

**BEN BRIERLY** (Moston): The landlord was very keen- he would replace all his non-traditional beers with cask "tomorrow".

**MOWERS ARMS** (Moston): The landlady would be pleased to try cask Stones. She doesn't like the fizzy stuff, with all the attendant problems of power failures and gas cylinders. She used to sell all cask beer at Listons in the city Centre.

**UNICORN** (City Centre): (Headquarters of Honourable Order of Bass Drinkers) Currently sells Bass, Toby Light and 4X mild on recently installed handpump, with one spare pump. The landlord wanted two banks of three, but the brewery said it was too expensive. He would readily instal cask Stones and the cellar has ample stillage space.

**CROSS KEYS** (Eccles): One of the longest established and very rare outlets for draught Bass outside the city centre; the new licensee has been told not to order any more Bass, which he admits has a low sale. As the 4X mild is now keg, once the Bass goes the pub will have no real ale. The landlord is therefore anxious to re-establish a high volume cask beer, and sees real Stones as being an excellent opportunity.



**DOG & PARTRIDGE** (Irlams o' th' Height): There is no cask beer in the pub, but the premises will be extended into the shop next door in about three months time. There will be a restaurant area and the landlord definitely intends to install a cask beer with handpumps. He will be pleased to try cask Stones and intends putting on draught Bass anyway.

**WHEATSHEAF** (Oldham Road): Now sells traditional 4X mild only. The cask bitter was tried but failed to sell well enough. The pub has always been a mild only house; Cornbrook Brewery tried to introduce bitter many years ago, but that too was short-lived. However, the landlady is willing to give cask Stones a try.

**NOTTS CASTLE** (Oldham Road): The new landlord has only been in ten weeks. A Boddies and Robbies drinker, he believes that his current range of non-traditional beer is rubbish and would be very keen to take cask Stones.

**HORSESHOE** (Higher Broughton): Currently sells cask mild and bitter on handpump. Willing to try any cask beer.

**BRIDGE** (Broughton): The landlord is in favour of cask beer but concerned about stillage space. He would take cask Stones if possible.

#### The Definitely Nots

**ROYAL OAK** (Pendlebury): Before the landlord died the pub sold draught Bass, Worthington Best Bitter and 4X mild all from cask. The BB disappeared shortly after Stones keg was introduced. His widow now has the licence and 12 months ago she took out Bass due to low sales and finally, last November, the 4X went onto blanket pressure. She does not now want the inconvenience of reintroducing a cask beer and disrupting the orderliness of the cellar.

**BIRD IN HAND**: Would not want it. The pub sells less than three containers a week.

**CRUMPSALL**: A busy pub, but quite definitely does not want cask. The licensee thought it was more likely to go into the managed houses.

#### The Not Sures

**THATCHED HOUSE** (Moston): The landlord is a member of the Honourable Order of Bass Drinkers, so he did not need convincing of the virtues of real ale. He used to sell Toby Light until recently, but stopped due to inconsistent quality. He would like to sell a cask beer as a "second runner", to take some of the sales off the keg Stones and thus avoid a move to tank Stones. However, he does not believe his cellar is large enough to switch completely to cask, because his sales are too high. He would therefore prefer cask bitter alongside the cask Stones.

**OLD WELLINGTON** (City Centre): The pub sells draught Bass and Toby Light through electric pumps from the cellar 80 feet below. The landlord would like to sell cask Stones but, because it is a high volume beer, he would not have the stillage space in his restricted cellar.

**ST VINCENT** (Ancoats): Not keen. The handpumps were removed soon after the present licensee moved in and she very much doubted whether there was stillage space left in the cellar. All the previous stillages had been taken away, too.

**HALFWAY HOUSE**: No cask beer at present. The licensee was anxious to point out that he wasn't against cask beer, but he was doubtful about stillage space (3 x 5 barrel tanks in the cellar).

**BERWICK ARMS** (near Strangeways prison): The bar is due to be altered after Easter and the licensee thought there might be a possibility of putting on cask beer then - willing to give it a try.

**ROBIN HOOD**: The licensee has never handled cask beer before and sells two barrels per week of Stones. A very definite "don't know".

## CENTRAL MANCHESTER TOP TEN

Abercrombie, Bootle St (Whitbread)	Red Bull, Mason St (Whitbread)	Grey Horse, Portland St (Hydes)
Bay Horse, Thomas St (Wilsons)	Rising Sun, Queen St (Wilsons)	Harp & Shamrock, New Mount St (Mar)
Britons Protection, Gt Bridgewater (Tet)	Royal Oak, Gt Ducie St (Bodd)	Imperial, London Rd (Wilsons)
Burton Arms, Swan St (Bass)	Sam's Chop Hse, Bk Pool Fold (free)	Jolly Angler, Ducie St (Hydes)
Castle & Falcon, Bradshaw St (B'wood)	Sinclair's, Old Shambles (Sam Smith)	Lower Turks Head, Shudehill (Wilsons)
Churchill, Charlton St (Greenalls)	Town Hall, Tib Lane (Bass)	Mariners, St Ann's Sq (Tetley)
City, Kennedy St (Tetley)	Union, Princess St (Burtonwood)	Millstone, Thomas St (Wilsons)
Corbieres, St Ann's Sq (Marstons)	Waggon & Horses, Southgate (Wil)	Mitre, Cathedral Yd (Wilsons)
Crown, Deansgate (Wilsons)	Weavers, Angel St (Tetley)	New York, Bloom St (Wilsons)
Crown & Cushion, Corporation St (Whit)	Wheatheaf, Oak St (Tetley)	O'Connell Arms, Oldham Rd (Whitbread)
Dancing Weasel, Gt Ancoats St (Wil)	White Lion, Liverpool Rd (Whitbread)	Oxno, Liverpool Rd (Whitbread)
Ducie Arms, Gt Ducie St (Bodd)	Bolton Arms, New Bridge St (S&N)	Peveril of the Peak, Gt B'water St (Wil)
George & Dragon, Bridge St (Wilsons)	Ancoats, Gt Ancoats St (Greenalls)	Rembrandt, Sackville St (Lees)
Grenadier, Oldham St (Wilsons)	Britannia, Newton St (Wilsons)	Royal George, Lever St (Wilsons)
Hare & Hounds, Shudehill (Tetley)	Bull's Head, London Rd (Burtonwood)	St Matthew's Tav, Torman St (Whit)
Hat & Feathers, Mason St (Whitbread)	Castle, Oldham St (Robinsons)	Seven Oaks, Nicholas St (Whitbread)
John Willie Lees, Withy Grove (Lees)	Church, Jersey St (Wilsons)	Smiths Arms, Sherratt St (Tetley)
King, Oldham St (Tetley)	Circus, Portland St (Tetley)	Unicorn, Church St (Bass)
Marble Arch, Rochdale Rd (Wilsons)	Coach & Horses, London Rd (free)	Victoria Stn Bar (free)
Midland, Peter Street (Tetley)	Cox's Bar, Grand Central (Bodd)	Waldorf, Gore St (Whitbread)
Mr Chesters, Cateaton St (Whitbread)	Crown & Anchor, Hilton St (Whit)	Wellington, Old Shambles (Bass)
Moulders Arms, Heyrod St (Tetley)	Crown & Kettle, Gt Ancoats St (Wil)	White House, Gt Ancoats St (Wilsons)
Nicklebys, Dale St (Wilsons)	Deerings, York St (free)	Square Albert, Albert Sq (Tetley)
Old Garratt, Princess St (Bodd)	Dutton Arms, Park St (Hydes)	Mother Macs, Bk Piccadilly (Whit)
Paddy's Goose, Bloom St (Wilsons)	Grand Hotel, Aytoun St (Bass)	

Last month we reported the change in the selection procedure for central Manchester pubs in the Good Beer Guide (see City Desk this month). To find out what the nation thinks, What's Doing is conducting its own poll on this weighty matter. You are invited to choose the 10 pubs on this list which you would most like to see in the GBG. Send your choice to the Editor, 375 Chorley Road, Swinton, Manchester. Results next month.

## Subscriptions

If you want to be sure of getting What's Doing every month, why not subscribe? It costs £1.60 for six issues, postage paid. Fill in the form below and send it together with a cheque or postal order made out to "What's Doing" to Roger Hall, 123 Hill Lane, Blackley, Manchester

NAME.....

ADDRESS.....

Please send me the next six issues starting with the ..... issue (state month)

## Back Numbers

These are available from the above address at 10p a copy. Please send a large s.a.e.

## What's Doing COPY DATE for March is Thursday 18 February

What's Doing is edited by Neil Richardson, 375 Chorley Road, Swinton, Manchester M27 2AY. 061 793 5329

## JOIN CAMRA

To join CAMRA send £7.00 to: Membership, CAMRA, 34 Alma Road, St Albans, Herts AL1 3BW

# GREENALLS NEWS

The Lion and Railway, Station Road, Northwich has been renovated and (together with the Bluebell in Warrington) must rate as one of Greenalls' best moves yet in maintaining and preserving traditional pub architecture and atmosphere. In both cases too, handpumps have been restored. No doubt the management of the Lion will be hoping to capitalise on the summer steam excursions and occasional open days at the station opposite, for railway memorabilia unobtrusively adorn the pub.

Lest it be thought that all is Smiles in Greenall Whitley Land, the willingness of the company to lease increasing numbers of their tied estate to budding entrepreneurs is causing concern on the pub preservation front. Following news of the planned desecration of the Dog & Pheasant, Westoughton, the new proprietor of the Chetwode Arms, Lower Whitley has defied a Grade 2 DoE listing on a 17th century building, and a refusal of planning permission, to transform a pub of great character, much to the disgust of many former regulars.

News of conversions to chilled and filtered mild continues to appear, leading to increased fears for the future of the beer in cask form. The latest to change in north Cheshire are the Stanley Arms and the Commercial, Widnes and the Three Greyhounds, Allstock (near Northwich).

The Grosvenor, central Widnes has just been revamped as the "Game Bird", advertising on their hoardings "Fun" and "Wizard Brews". The latter are Greenalls fizzy rubbish.

Roy Walker



Personally, I find it very hard to attach any blame to Kevin and Tracy Voletrouser for what happened. As newly installed Mein Hosts of the Rat and Handbag, they have understandably been striving to gentrify the hostelry and make it appeal to socio-economic groups A and B1. Big Julie just didn't fit in with this new upmarket image, despite her other outstanding features. Tracy had had it in for Big Julie since the farting powder in the black puddings episode on ladies' darts night. This latest escapade was an excellent excuse for the push.



Nobody knows what compelled Julie to brave all and streak topless through the visitors' changing room at the all-Slumley dominoes-on-horseback finals, but her photograph in the Scousely Imbiber has certainly changed her life. Sacked as barmaid of the Rat and Handbag, Julie has since been inundated with offers of employment. Eddy Nestfeather promised a four figure sum (10½p) if Julie would pose for page 3 of What's Doing, whilst hostelrys have been vying with each other in attempts to entice the good lady to their establishments. Until Tracy Voletrouser realised how to cash in on the publicity and gave Tracy her job back, it seemed that she'd be taking up Bilko's offer as upstairs barperson at the Duke of York Tuesday Guatemalan Nose Flautist recital evening.

I suppose all's well that ends well but it leaves a nasty taste in the mouth, which is more than can be said about Broddingnags latest rapacious activities. Why on earth aficionados of the hop should be apprehensive about this is beyond me. Fuddy's was run by a bunch of ageing stick in the muds, who were to real ale what Eddie Waring is to elocution. How much better that all their sordid alehouses in the sticks should be supplied with Grotley's own ubiquitous instant amber nectar. Better Fuddys than Drabs, comes the cry from the discerning cognoscenti of Greater Grotley, or is that yet to come?

I have had the opportunity of seeing the proofs of the 1983 toppers vademecum and reproduce here a section which should stifle all future posturing argumentation:

## GREATER MANCHESTER

### Lostock 25F2

11-3, 5.30-10.30 (11 F. S.)

#### Duke of Wellington

60 St. John's Road  
Westhoughton B13387  
DS 671078  
Tetley Walker Mild,  
Walker Bitter (M)  
Comfortable well-run pub  
J C A B R D V

### Manchester City Centre 25G3

#### Jolly Angler

47 Ducie Street, Ancoats, 1  
(011 A665)  
Hydes Best Mild, Bitter (M)  
Anvil Strong Ale (M)  
Quaint and characterful,  
behind Piccadilly Station  
J C A B R D V

#### Jolly Angler

47 Ducie Street, Ancoats, 1  
(011 A665)  
Hydes Best Mild, Bitter (M)  
Anvil Strong Ale (M)  
Quaint and characterful,  
behind Piccadilly Station  
J C A B R D V

#### Jolly Angler

47 Ducie Street, Ancoats, 1  
(011 A665)  
Hydes Best Mild, Bitter (M)  
Anvil Strong Ale (M)  
Quaint and characterful,  
behind Piccadilly Station  
J C A B R D V

#### Jolly Angler

47 Ducie Street, Ancoats, 1  
(011 A665)  
Hydes Best Mild, Bitter (M)  
Anvil Strong Ale (M)  
Quaint and characterful,  
behind Piccadilly Station  
J C A B R D V

#### Jolly Angler

47 Ducie Street, Ancoats, 1  
(011 A665)  
Hydes Best Mild, Bitter (M)  
Anvil Strong Ale (M)  
Quaint and characterful,  
behind Piccadilly Station  
J C A B R D V

#### Jolly Angler

47 Ducie Street, Ancoats, 1  
(011 A665)  
Hydes Best Mild, Bitter (M)  
Anvil Strong Ale (M)  
Quaint and characterful,  
behind Piccadilly Station  
J C A B R D V

#### Jolly Angler

47 Ducie Street, Ancoats, 1  
(011 A665)  
Hydes Best Mild, Bitter (M)  
Anvil Strong Ale (M)  
Quaint and characterful,  
behind Piccadilly Station  
J C A B R D V

### Marple 25H4

11-3, 5.30-10.30 (11 F. S.)

#### Hatters Arms

Church Lane  
Robinson Best Mild,  
Best Bitter (M) Old Tom (M)

Pub Games of England



Pissing into Hat



## Branch Diary

### TRAFFORD & HULME

Sun 14 Feb 12noon. St Valentines Day Massacre. CAMRA v locals at pub games, Bakers Arms, Pownall Road, Altrincham (food available)

Thurs Feb 18th, 8pm. Branch meeting, Melville, Barton Road, Stretford

Thurs 25 Feb 8pm Pub of the Month with S M/cr branch, Derby Arms, Exbury Street, Fallowfield

Thurs 4 Mar 7.30pm Committee/Social, Volunteer, Cross Street, Sale

Thurs 18 Mar 8pm. Branch meeting, Malt Shovels, Stamford Street, Altrincham

Contact Mick Rottenbury 969 7013 (h)

### NORTH MANCHESTER

Wed 3 Feb Bradford Road crawl & Greenalls survey - Cricketers 7pm, Bradford Road Inn 8pm

Wed 10 Feb 7.30 Prince of Wales Oldfield Road, Kings Arms 8.15

Wed 17 Feb 8pm Crown, Blackfriars St. Guests John Hutchinson (ex-Bass) & Tudor Taverns speaker

Wed 3 Mar March of the Marches Bulls Head (Burtonwood) 7pm, Waldorf (Gore St) 8pm

Wed 10 Mar 8pm Bird in Hand, Patricroft

Wed 17 March 8pm St Patrick's Day Meeting & AGM. White Swan, Swinton

Contact Roger Hall 740 7937

### ROCHDALE OLDHAM & BURY

Tues 9 Feb 8.00 Branch meeting Healey (Robinsons), Shawclough Rd, Rochdale

Tues 23 Feb Committee meeting, Cross Yates (Holts) Whitworth Road, Rochdale

Tues 9th March Branch meeting Angel, Shaw Road, Rayton (Lees)

Tues 23rd March 8.00pm Committee meeting, Woodman (Lees), Hollinwood

Contact: Steve Lawton 061 620 9239 (h) or 061 236 4411 ext 7237 (w)

### SOUTH MANCHESTER

Thurs Feb 11th Branch meeting, Gateway, Wilmslow Road, 8pm

Thursday Feb 25th Pub of the Month - The Derby, Exbury St, off Ladybarn Lane, Fallowfield, M14 at 8pm

Thursday March 11th Branch meeting, Gateway, Wilmslow Rd, 8pm

Contact Humphrey Higgins 432 0059

### HIGH PEAK & NORTH EAST CHESHIRE

Thurs 4th Feb 9pm Committee Meeting, Crescent, Disley

Tues 9 Feb 8.30pm Branch meeting Travellers Call, Bredbury. Guest speaker Jim Hooley, talking on history of Stockport pubs. All welcome.

Contact Tom Lord 061 427 7099

### SOUTH LANCASHIRE

Tues 2nd Feb Greenalls Action Night, Wheatsheaf, Wallgate, Wigan 7.45

Thurs 11th Feb Branch Meeting Imperial, Ince 8.30

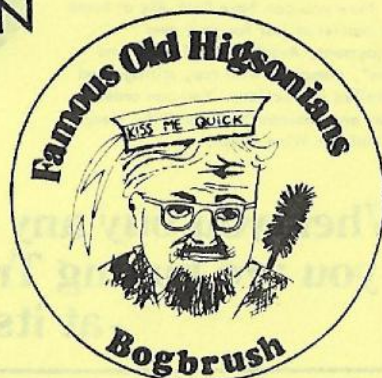
Fri 29th Feb Pub of the Month Victoria, Platt Bridge (Peter Walker) 8.30

Contact Brian Gleave Atherton 876200 (w) 892965 (h)

## BOGBRUSH CAPTION

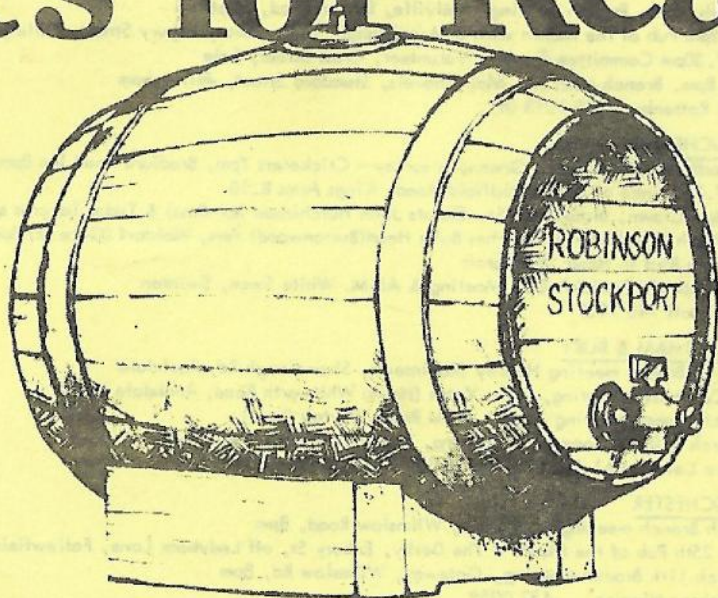
The Winner (anonymous) was:

Nobody knows Bogbrush's real name, but he was affectionately given this endearing pet name after being found as a baby on New Brighton beach, near the raw sewage pipe. He cut a cuddly, idiosyncratic figure with his beach hat and steamed-up glasses, a problem which has tended to block out his view of the real world, even to this day. The rattle he was holding at the time compensated somewhat for having lost his bottle.





# It's for Real



We at Robinson's think that what matters most about beer is its flavour. That's why we are still brewing beer the same way that we did a hundred years ago. Natural ingredients, the same time-honoured brewing ways, even on the same site - not many can say that!

And you can buy at least one, usually two and sometimes more of the traditional ales listed here in any Robinson's pub within 100 miles of Stockport. Not many can make that sort of claim either.

Now you can have Real Ale at home for parties or just for your own enjoyment. Available in Firkins and Pins\*, complete with tap, stillage and detailed instructions. You can order from any Robinson's On or Off-Licence or Unicorn Wine Shops.

**Old Tom Ale**  
**Best Bitter Ale**  
**Best Mild Ale**



Always available from Unicorn Wine, Lower Hillgate, Stockport, (just by the Brewery) 061-480 6571. And it's the cheapest way of buying beer. A little more trouble perhaps but we think you will agree with us that it is worth it.

There are deposits on the casks, stillages and taps, returnable in full when you bring them back. You can borrow glasses, paying only for those you break or fail to return providing you also make appropriate purchases of items to fill them.

We strongly recommend that you place your order as soon as possible for Christmas or New Year use.

It's Robinson's . . . for Real.

**When you buy any of these Robinson's Ales,  
you are buying Traditional Draught Beer  
-at its very best.**