

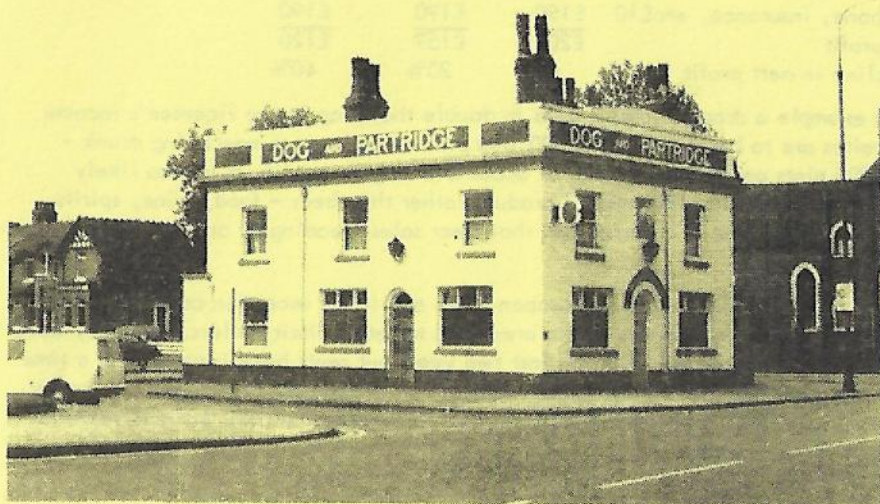
WHAT'S DOING



APRIL
1982

THE MANCHESTER BEER DRINKER'S MONTHLY MAGAZINE

FEELING THE DRAUGHT



"PUBS MAY CLOSE" - This was the front page headline of the Eccles Journal of March 11th. The article suggested that eight licensees in Eccles were about to leave the licensed trade, leading to the possible closure of the pubs. In fact there are at least a dozen licensees in the area who may leave their pubs. The eight pubs mentioned in the Journal are:-

White Lion, Holts
Ellesmere, Boddingtons
Dog & Partridge, Greenalls
Spinners, Tetleys

Stanley Arms, Holts
Queens Arms, Boddingtons
Star, Greenalls
Town Hall, Wilsons

All the pubs, with the exception of the Spinners and the Town Hall, sell traditional beer, and the beer is well kept in all the real ale outlets. The departing licensees blame falling trade caused by the recession as a reason for wanting to leave.

There has been some suggestion that Eccles is over-pubbed, but at 50 pubs for a

population of 35,000, the ratio is fairly close to the national average. Are other areas threatened with the same difficulties and, if so, why? Pubs have a high proportion of fixed overheads such as rates, rent, heating, which eat into profits during a recession.

If we take as a theoretical example a small pub with a turnover of 6 barrels per week, the effects of a small drop in sales can be dramatic:

		10% drop	20% drop
Sales 6 barrels @ 50p/pint	£864	£778	£691
gross profit 30%	£260	£233	£207
gross profit from other sales	£130	£116	£103
total gross profit	£390	£349	£310
Fixed overheads			
Rates & Rent	£100		
Heat, light, power	£50		
Wages	£30		
Telephone, insurance, etc	£10	£190	£190
Nett profit	£200	£159	£120
% decline in nett profit	0	20%	40%

In this example a drop in sales results in double that drop in the licensee's income. If Thwaites are to be believed, 3,000,000 pint a day less are now being drunk - about 300 pints per pub per week, or about £45 in gross profit. It is also likely that during a recession the sales of products other than beer - food, wine, spirits, mixers - will decline at a faster rate than beer sales, leading to an even greater fall in gross profits.

A pub which closes is unlikely to reopen when and if the recession comes to an end. It is in the long term interests of the breweries to retain their outlets. Not only have retail margins on beer fallen in the last two years but rents have increased at a time of falling sales - squeezing the tenant rather than the brewer. If some of our better pubs are to survive, perhaps the brewers need to re-examine their policies towards rents and retail margins.

RH

NOTES FROM BASS

A recent meeting with the Chairman of Bass NW revealed some interesting facts and opinions. There is no possibility of cask Stones appearing on this side of the Pennines. The Sheffield brewery does not have the capacity and Runcorn, which can brew cask beer, would not be capable of matching the palate. Cask mild (4X) sales have shown a steady increase over the last 18 months and sales of Brew X have steadied since it was renamed. We were assured that Bass's market share was increasing in the North West and that there was no need to exploit the real ale market. In view of the comparative emptiness of Bass pubs, one wonders from whom they are gaining their market share (Whitbread, Wilsons, Tetleys, Boddingtons, Holts?).

If we are to persuade Bass NW that real ale public houses are a discrete and identifiable market sector, then we must argue in economic rather than emotional terms to convince the company that traditional cask conditioned beer makes commercial sense.

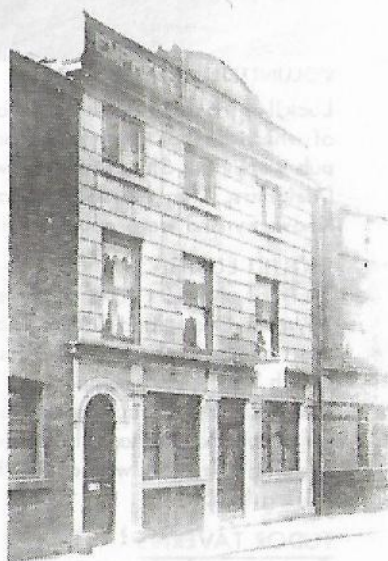
One serious hurdle is the attitude of the public towards Bass. Everyone knows that all Boddingtons pubs serve the same kind of beer, Wilsons, Tetley Walker and Whitbread have taken great care to identify those outlets which do serve cask beer. According to these brewers, their conversions have been successful. Bass pubs are not easily recognisable when they do sell real ale and the fact that beers are not sufficiently differentiated could create consumer resistance.

However, information about real ale successes, Bass pubs competing against real ale outlets of other brewers, opinions of licensees and customers may all help to persuade the brewery to convert more pubs to cask beer. Platitudes about Bass being the largest brewers of cask beer in the country are mere palliatives and may soon no longer be true. Their performance in the North West is appalling. A barrage of factual, accurate articles in What's Doing may be the first building blocks in a bridge between the brewery and the discerning customers of the North West. Keep researching and reporting! Bass can and will sell more cask beer, given the opportunity and an inkling of a belief that it may be profitable.

Roger Hall

WHAT'S DOING

THE CITY ARMS, KENNEDY STREET,
IN THE 1920s



BURTON ALE IN MANCHESTER

The City Arms, Kennedy Street, Manchester, now sells Ind Coope's Burton Ale on handpump, not Tetley bitter as given in the city centre list in February's What's Doing. The Tetley bitter had earlier replaced Walkers Warrington Ale, for which the handpump had originally been installed.

DUTTONS

The introduction of Duttons bitter continues, recent new outlets are:

Rose & Crown, Edgeworth

Volunteer, Darwen Road, Bromley Cross

Sportsmans, Darwen Road, Bromley Cross

Cheetham Arms, Blackburn Road, Astley Bridge, Bolton



VOLUNTEER, BROMLEY CROSS

Luckily, none of these pubs have had "The Treatment" like the Knowsley in Bury, of which further information has come to light. The culprits in the "design" of the pub were Paul Shead Studio, who call themselves Bar Fitters, Display Artists and Designers. They reside at 105a Hornby Road, Blackpool. If you've been in the Knowsley and were appalled at the mess, then write and tell them so.

LIQUID LUNCH

Trafford planners have approved a scheme to build a new pub at the corner of Seymour Grove and Talbot Road, Old Trafford - even though the plans fall well short of the Council's normal standards for car parking. The applicants, Bass North West, say the pub is to be built mainly for the lunchtime trade of office workers and most customers would come on foot. The site is next to a six-storey office block. Perhaps the brewery will name it "The Office" to encourage early evening drinkers, who could then phone home and say where they were - without telling lies!

TUDOR TAVERNS

Contrary to the list of Tudor Tavern real ale outlets published last month, the Hare & Hounds, Holcombe Brook and the Printers Arms in Tottington both sell, and have done for over a year, real ale; mild and bitter at the usual up-market prices of course, with little differential.

NOTES FROM LEIGH

The rebirth of Peter Walker seems to have given Tetleys new ideas for modernisation. Take the Pied Bull, for instance, on the edge of the Leigh town centre rehabilitation area. Already, with just two open coal fires installed in the lounge, the place looks much more inviting. New upholstery and carpets are expected and photographs of old Leigh will be hung throughout.

Meanwhile, at the other end of town, the Nevison has just been transformed. The



PIED BULL, LEIGH

living quarters have been moved upstairs, enabling the gents' to be brought indoors and the taproom to be enlarged. The two small lounges have been retained and refurnished and gas lamps have been put over the bar, which itself has been extended. A former South Lancashire Pub of the Month (WD May 1981), the Nevison is well worth a visit.

Work is due to start in the near future at the Railway, Twist Lane (Tetleys) and the Spinners Arms (Bass). The George Shaw windows of the Eagle & Child (Bass, fizz, opposite bus station) have been removed. Has this been done for protective reasons?

During Budget Week, prices at the Ring o' Bells (Tetley) rose by 2p. The following week the Budget increase came into effect and a further 3p was added. This means the bitter has risen from 52p to 57p in a few days - is this a record?

PEDIGREE

The Victoria, Horwich, a fine old Threlfalls house, has tried Castle Eden and Saxon Cross alongside its handpumped Chesters. The latest "guest" beer is Marstons Pedigree.

CELLAR AWARD

The Cornbrook, 256 Chester Road, Hulme (Tetley mild and bitter, handpumps) has received a "Cellar of the Year" Area Award for 1981 for "high standards of beer and cellar management".

BURTONWOOD PUB REOPENS

The Stamford Arms on Stamford Street, Stalybridge, reopened recently after renovations which retain the essential character of the pub. It serves bitter, dark mild and light mild (the only outlet south of Manchester) all on handpump, and is close to both the bus and railway stations, in the centre of Stalybridge.

BETTER BOLTON

Bolton is fast becoming a beer drinkers' paradise, particularly the town centre. Although it is dominated by Greenalls and Tetley, other breweries have a good showing, particularly around the Churchgate area. The maps shows pubs within a mile of the town hall.

1 Duck & Firkin-Hartleys XB, Castle Eden,
Duttons Bitter (H)

2 Alma-Burtonwood bitter, light mild, dark
mild (H)

3 Scamps - disco serving only handpumped
Greenalls in Bolton

4 New Zealand Chief-Greenalls mild and
bitter (E)

Sweet Green Tavern-Walkers Best Bitter
& Tetleys mild (H)

6 York-Burtonwood bitter, light mild, dark
mild (E)

7 Clifton Arms-Tetley Bitter & Mild (H)

8 George-Wilsons mild & bitter (E)

9 Ancient Shepherd-Thwaites bitter and
best mild (H)

10 White Lion- Wilsons bitter & mild (E)

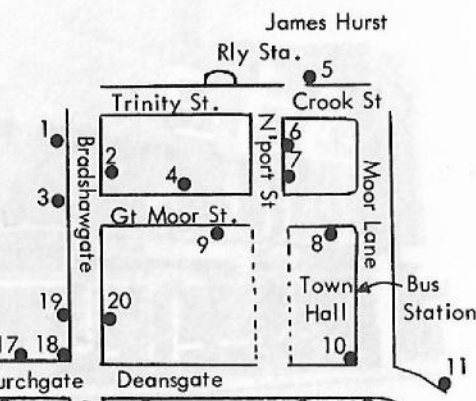
11 Cromptons Mule - bistro serving only
draught Bass in Bolton (H)

12 Gypsies Tent-Tetley mild & bitter (H)

13 Greyhound-Bass 4X mild - no bitter
yet - cask Stones? (E)

14 Old Three Crowns-Wilsons bitter, mild
and DPA (H)

15 Dog and Partridge-Thwaites bitter and
best mild (H)



16 Old Boars Head-Greenalls bitter & mild

17 Old Man & Scythe- Cider house,
Bulmers medium sweet (E)

18 Swan Hotel-Burtonwood dark mild and
bitter (Malt&Hops & Chamber
Pot bars only) (H)

19 Prince William-Boddingtons mild &
bitter (E)

20 The Gaiety-Vaux Samson (H) Only
Samson in Gtr Manchester

UPPERMILL ADDITION

The range of beers at the Church, Uppermill has been extended by the addition of Matthew Brown's John Peel Special. Other real ales are S&N IPA and Youngers No 3. The good news is that these real ales have each replaced a keg beer and the licensee hopes that more fizz dispensers will bite the dust in the future.

MUCKING ABOUT WITH MILD

Rumours are rife concerning John Willie Lees' future plans for mild. The brewer produces two milds, but the ordinary accounts only for 10 barrels per week (1 brew). If demand falls below this level it will be scrapped. The rumours circulating suggest that "rationalisation" of the milds may occur with the appearance of a new mild to replace the present two.

FOURTH SADDLEWORTH BEER FESTIVAL

Full details are now available for this real ale extravaganza, to be held at the Civic Hall, Uppermill, near Oldham. The festival covers the weekend Friday 30th April until Sunday 2nd May. Licensing hours will be 5.30-11.00 Friday, 11.30-3.00 & 5.30-11.00 Saturday and 12.00-2.00 Sunday, with a drinking-up session on Sunday night 7.00 onwards (subject to availability). Admission, (free to current card-carrying CAMRA members) will be 20p lunchtimes and evenings before 7.00pm, and 50p thereafter. Beers from 23 breweries will be available. The "new wave of micro-brewers" will be ably represented by Trough (Bradford), Two Shires (Ramsbottom), Priory (Newark), Smiles (Bristol) and Victoria (Ware, Herts). Amongst the more long established brews on sale will be Wadworths, Felinfoel, Devenish, Ruddles, Everards, Hoskins, Greene King, Hartleys and Castle Eden. Such local favourites as Sam Smiths, Taylors, Lees and Higsons will also be available. Mild beers will come from Taylors, Higsons, Darleys, Hoskins and Felinfoel, whilst "kamikaze" beers from Lees, Taylors, Wadworths, Greene King, Ruddles and Everards will be dispensed with a government health warning!

Traditional farmhouse cider will be from the West Country, and, for the first time at Uppermill, wine will also be on sale - not by the pint as happened at a recent CAMRA beer festival held not a million miles from Bury.

Entertainment will feature at every session, with Trad Jazz at lunchtimes and Big Band Brass in the evenings. Good wholesome food will be on sale throughout the festival in the lower hall, where, in fact, children will be allowed.

No tickets are available, so if you plan a pub outing on Friday or Saturday evening come early to avoid disappointment.

REAL SNOTES

Handpumped, traditional Stones bitter has arrived on this side of the Pennines. The Bridge Inn, Lees Road, Oldham - a one-time tied Bass house, now sells the real stuff alongside the established Toby Light and Bass. The pub is now a free house but sells only Bass products, very confusing! At the time of our intrepid taster's visit, both real and keg Stones were available side-by-side. Guess which he preferred!

YATES & JACKSONS ARRIVES

This half of the "Lancaster Two" has reached Rochdale. The Bowling Green on Spotland Road now sells Y&J together with Duttons bitter. The pub is yet another of Whitbread's tied "free houses". The presence of Peter Cole (ex-J W Lees) as Managing Director of Y&J has led to a push into the free trade by this small Lancaster brewer. Mr Cole informs us that more Whitbread pubs might soon be taking their beers.

MUCKY FOLK

Wednesday 3rd March saw the opening night of a new folk club at the White Swan, Green Street, Fallowfield, a GBG pub since 1975. Steve and Jean Weston had spent the previous month decorating the room, which is now ideal for the club, complete with murals and log fire. The club is run by Annie Morris, whose experience in the folk scene resulted in a wealth of local talent lending their support on the opening night. The combination of artists such as Les Barker and Mrs Ackroyd, Pete Hughes, Old Moat Rapper, Free Style and Gorton Tank, together with the Robinsons mild and bitter and Old Tom on sale downstairs led to a superb evening. The club will be a regular Wednesday feature at 8.00pm and in addition to singers nights and local artists appearing, there will be nationally known performers such as Tony Rose (31 March), Les Barker & Mrs Ackroyd (21st April), Sean Cannon (19 May), John Kirkpatrick (16 June) - all that is needed now is a regular audience.

Contributors: Don Chattwood, Mick Rottenbury, Roger Hall, Ray Kruup, John Slater, Tom Lord, Humphrey Higgins

INNER CITY IMPROVEMENTS (2)

Last month I wrote about a tenant trying to improve the image of his first pub by selling good beer, "doing up" the building and chucking out flea-ridden wines. This month it is worth looking at a pub that has gone well past that stage and is now as respectable an establishment as you'll find anywhere in Town. The Millstone, Thomas Street (Wilsons mild and bitter, handpumps) was once pretty grotty and present tenants Jo and Alison Openshaw can take a lot of credit for the way they have built the pub up. It is a very roomy house and its early potential is certainly being realised. Downstairs there is a cosy smoke room, rather like a traditional living room, with piano, standard lamp and mirror. It makes an ideal meeting room, being free from juke box and with a door to shut it off from the bar - very rare in these days of open plan lounges. The L-shaped lounge is itself comfortably upholstered and an interesting mixture of lampshades, pictures, mirrors and brasses add to the atmosphere. On the other side of the large four-sided bar is a spacious vault (pool, darts, etc) with a clock permanently on 10.50 - ideal Fridays and Saturdays! Telephone, cigarette machine and Space Invaders are nicely out of the way in the corridor at the back of the bar leading to the gents', which boasts a wonderful window with the word "Urinal" decoratively etched in the glass.

Upstairs is a superb function room, well decorated, complete with leaded glass "hanging" bar. The beer is electrically dispensed at present but Jo is soon to fit his own handpumps (he couldn't afford the brewery's estimate for the work!) This room is now regularly used on Fridays by the Folk Club (with Liberation ideals!) and Saturday is jazz night.

The Millstone has also earned a high reputation for its lunchtime meals, with a full and varied menu at reasonable prices. It all goes to show what can be done and it is just 12 months since Jo and Alison left the Bricklayers in Altrincham to try their luck in the City.

Mick Rottenbury

MANCHESTER BREWERIES No.24

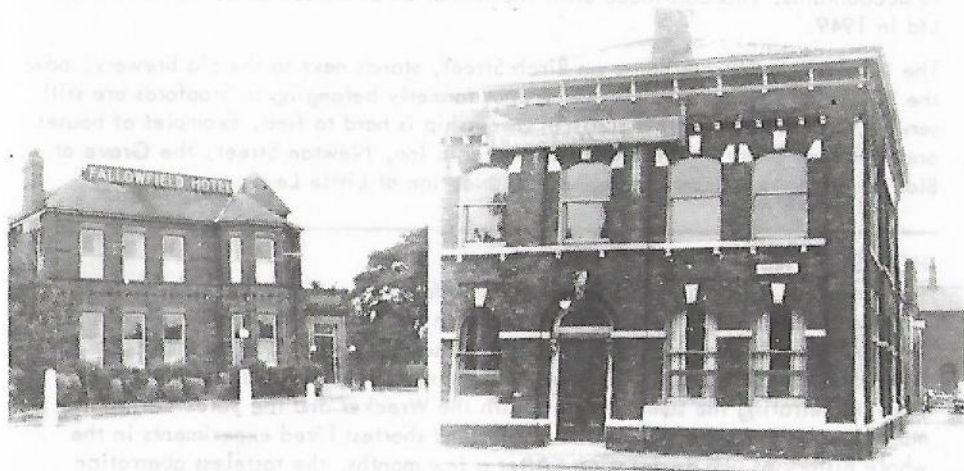
Stopford's Imperial Brewery

Alfred Stopford kept the Neptune Inn on Murray Street, Ancoats in 1852. Like many publicans of that era, he turned his hand to brewing, and was successful enough to continue on a larger scale. By 1857 he had set up a business at the aptly named Neptune Brewery, just over half a mile away from the inn on the corner of Porter Street and Garratt Street, two roads which no longer exist. Garratt Street was a well pubbed thoroughfare at the turn of the century: at No.12 stood a Walkers pub called the Railway, at 23 was the Locomotive (privately owned) and next door to that was the Spinners (John Wagstaffe & Co of Hulme). There was another Peter Walker house at 66 and, close to the Neptune Brewery, was Stopford's Brewers Arms.

The business must have grown very rapidly in the early days since, by 1862, Stopford was also using the Albion Street Brewery in Miles Platting. Again, Albion Street no longer exists. Stopford ran the two breweries together for only about a year. He then left both to be used by others (Neptune by William Wilkinson, Albion Street by William Coop) and moved two miles away to the Imperial Brewery at West Gorton.

Stopford began acquiring pubs in the immediate vicinity of the new brewery. Added to his tied estate were such pubs as the Club House Inn and the Gorton Brook Hotel on Belle Vue Street, and the George Inn on Clowes Street. The number of tied houses eventually reached about 80.

When Alfred Stopford died in 1886, he left a personal estate valued at over £110,000. He bequeathed £20 a week for life to his son Charles and also provided for his wife Sarah, sister Jane, two daughters and his brother Walter. Mr William Milne (an accountant) and Walter Birch of Fairfield were appointed executors. They were instructed to continue the business for a year then offer the brewery, offices and



THE FALLOWFIELD HOTEL AND THE BESSEMER, TWO FORMER STOPFORD PUBS

MANCHESTER BREWERIES No. 24

IMPERIAL BREWERY.
Hide Road.
WEST GORTON,

near

Manchester, Feb 6 1904

Mrs W G Burton

Stopford's Brewery Co Ltd

ALE & PORTER BREWERS, SPIRIT MERCHANTS &c.

All receipts for cash must be given on a printed cheque from a book belonging to this firm. No other form of receipt will be acknowledged.

0 2... lbs. Brew Hds @ 51. ✓ 2 5.

IMPERIAL BREWERY BILLHEAD

buildings, plant and machinery for £30,000 to Charles Stopford and Mr Lees Bamford, Cashier at the brewery. On 4th June 1889, Stopfords Brewery Co Ltd was registered with £120,000 capital to carry into effect an agreement between these parties, in conjunction with John Pugh Bent, who represented the City of Manchester.

In 1927, Walker & Homfrays of Salford bought out Stopfords. The Palatine Bottling Company, which had been formed as a private company by Walker & Homfrays in 1920, then moved into the building. Palatine also took charge of the ex-Stopford pubs but these were later leased back to Walker & Homfrays for reasons best known to accountants. This continued until the formation of Wilson & Walker Breweries Ltd in 1949.

The Imperial, a Wilsons house on Birch Street, stands next to the old brewery, now the "Imperial Trading Estate". Many pubs formerly belonging to Stopfords are still serving but evidence of this previous ownership is hard to find. Examples of houses once selling "Imperial Ales" are the Britannia Inn, Newton Street, the Grove at Blackley and, now a private house, the Nob Inn at Little Lever. Alan Gall

HOLTS NEVADA TAP

The Knowsley on Cheetham Hill Road was a fairly unexceptional pub housed in a grade II listed building until Whitbread, in their infinite wisdom, turned it into the Nevada Bar. They must have given some young marketing executive his head, someone who'd kept his head in the sand during the 70's when Wilsons were perpetrating the same disasters with the Wrecker and the Jules Verne. It must have been one of the most ludicrous and shortest lived experiments in the whole history of pub devastation. After a few months, the tasteless aberration closed and has now been sold to Holts round the corner, who, one hopes, may spend as much money turning it back into a proper pub as Whitbread did to wreck the place.

THE BASS CASK LIST

Listed below are the cask beer outlets in Bass North West as at January 1982. The list indicates that the beers listed were supplied at some point during January, not necessarily all the time and they may now have been withdrawn. An analysis of the list and previous lists makes an interesting comparison:

	30/4/81	30/11/81	30/1/82	%change since 30/4/81
Cask Bitter (B)	215	?	210	-2.3%
Toby Light (TL)	101	102	79	-21.8%
4X Mild (4X)	243	227	194	-20.1%
Draught Bass (Bass)	158	153	151	-4.6%
M&B Mild (MB)	45	38	36	-20.0%
Brew XI (XI)	21	18	20	-4.8%
Worthington Best Bitter (NB)	1	1	1	-
Blackpool Mild (BM)	4	4	4	-
	<u>788</u>	<u>543 +</u>	<u>695</u>	<u>-11.8%</u>
		cask bitter		

A more detailed look at the differences in the outlets shows that there were 3 new 4X mild outlets and 36 losses. For Toby Light, there was just one new outlet and 24 losses. Even the relatively consistent level of draught Bass hides the fact that there were 17 new outlets and 19 losses between November and January.

Is Bass's attitude of having virtually no policy towards cask beer consistent all over the North West? The answer must be no - in Rossendale Bass have 25 outlets, all bar one selling cask bitter and cask 4X mild. In nearby Bolton, where there are 17 outlets, just 2 of them sell cask 4X mild only. In fact, in Bolton you stand a better chance of Bass cask beer in the free trade.

It is also noticeable that the current Bass advertising about the World Cup "Watch Your Score Competition" fails to acknowledge that cask bitter and draught Bass even exist. Snotes and Hemeling get pride of place.

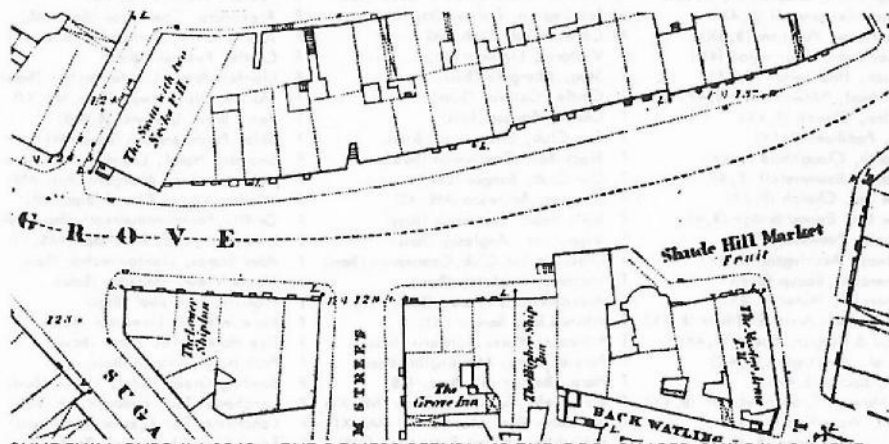
Marra's, Whitehaven (B)	F Dalton Con Club, Cumbria (4X)	F Prince of Wales, Barrow	T
Wansfell Hotel, Seascale (B)	F Miners Arms, Stainton (TL,4X)	F Rams Head, Barrow (TL,4X)	T
Pheasant Hotel, Bassenthwaite (Bass)	F Wellington Inn (4X)	F Regal Hotel, Forshaw St (TL,4X)	T
White Lion, Ambleside (Bass)	F Up & Under Club, Greengate ST (4X)	F Swan Inn, Barrow (TL,4X)	T
Langdales Hotel, Ambleside (Bass)	F Majestic Hotel, Barrow (B,TL,4X)	M Ship Inn, Barrow (TL,4X)	T
Britannia, Cumbria (B)	F Washington Hotel, Barrow (TL,4X)	M Sandgate Hotel, Barrow (B,TL,4X)	T
Kings Arms, Egremont (B)	T Periscope, Barrow (TL,4X)	M Sun Inn, Hawkshead (B)	T
Lowther Arms, James St (B)	T Tally Ho, Barrow (B, 4X)	M Theatre Hotel, Barrow (TL,4X,Bass)	T
High Cross, Cumbria (Bass)	F Brewery Inn, Barrow (TL,4X)	T Vulcan Hotel, Askan-Fu (TL,4X)	T
Queens Hotel, Barrow (4X)	F Bird in Hand, Ulverston (B,4X)	T White Horse, Dalton (TL,4X,Bass)	T
Ship Hotel, Greenodd (4X)	F Bridge Inn, Dalton (TL,4X)	T White Lion, Barrow (TL,4X)	T
Barrow F C (4X)	F Cavendish Arms, Cartmel (Bass)	T White Lion, Barrow (TL,4X)	T
Brit Legion, Ulverston (4X)	F Devonshire, Barrow (TL,4X)	T Wellington, Barrow (TL,4X)	T
Brit WMC, Barrow (4X)	F Devonshire, Dalton (TL,4X)	T Railway, Lindale (TL,4X)	T
St Patricks Club, Barrow (4X)	F Engine Inn, Cartmel (4X,Bass)	T Ambrose, Barrow (TL,4X)	T
Vickerstown CC, Barrow (4X, TL)	F Hartington, Barrow (Bass)	T Fishermans Arms, Baycliffe (B)	T
Swan, Ulverston (B)	F Harbour Hotel, Barrow (B,4X)	T Palatine Wine Bar, M'cambe (B,4X,Bass)	F
BR Staff Assn, Barrow (4X)	F Market Tavern, Barrow (TL,4X)	T Grosvenor, Morcambe (B)	F
		T Fleetwood Brit Legion (BM)	F

Savoy Hydro, Blackpool (Bass)	F	Soldier Dick, Furness Vale (TL)	T	Friendship, Melbourne St (B, TL)	T
N Euston Hotel, Fleetwood (Bass)	F	King William IV, Hyde (TL)	T	Norfolk, Glossop (TL)	T
Plough, Eaves (B)	F	Buxton Inn (TL)	T	Queens Arms, Glossop (TL)	T
Fleetwood WMC (BM)	F	Railway, Woodley (TL)	T	Howard Arms, Glossop (TL, Bass)	T
Gasworkers Union C, Fleetwood (BM)	F	Jolly Sailor, Macclesfield (Bass)	T	Church Inn, Tintwistle (TL)	T
Highbury Sacc & Sac C, F'wood (B, BM)	F	Duke of Sussex, Hyde (TL)	T	Victoria Inn, Hadfield (TL)	T
Bodega 2, Preston (B)	F	Clarence, Rusholme (Bass)	T	Pear Tree, Hadfield (TL)	T
Southport Arts Centre (Bass)	F	Hare & Hounds, Bower Fold (TL, Bass)	T	Royal Oak, Hollingworth (TL)	T
Halfway Inn, Clayton-le-Woods (Bass)	F	Wellington, Shambles, M/cr (TL, Bass)	M	Victoria, Glossop (TL)	T
Saddle, Blackpool (B, 4X, Bass)	M	Cross Keys, Eccles (Bass)	M	Feathers, Stalybridge (TL)	T
Castle Gardens, Poulton (B, 4X)	M	Unicorn, Manchester (TL, 4X, Bass)	M	Commercial, Mossley (TL)	T
Queens, Poulton (B, 4X)	M	Our House, Heywood (4X)	T	Stone Jug, Stalybridge (TL)	T
River Wyre Hotel, Poulton (B, 4X)	T	Starkey Arms, Heywood (4X)	T	Railway, Mossley (TL)	T
Adelphi, Preston (4X, Bass)	T	Tanners Arms, Heywood (4X)	T	Park Hotel, Dukinfield (TL)	T
Rosebud, Preston (B)	T	White Hart, Birch (4X, Bass)	T	Globe, Glossop (TL)	T
Standard Mower, Leigh (B, 4X)	T	Woolpack, Heywood (TL, 4X)	T	Junction, Glossop (TL)	T
Yew Tree, Boothstown	T	Black Bull, Heywood (4X)	T	New Butchers, Mossley (TL)	T
Railway, Liverpool (B)	T	Church, Clayton La, M11 (4X)	T	Sportsmans, Chadderton (TL, 4X)	M
Kings Head, Atherton (4X)	T	Brown Cow, Heywood (4X)	T	Derkar, Oldham, (TL)	M
White Lion, Leigh (B)	T	Gate, Over Winsford (B)	M	Hope & Anchor, Royton (TL, 4X)	T
Spinners, Leigh (4X)	T	Green Dragon, Mill La (B, 4X, Bass)	T	Bulls Head, Grains Bar (B, TL, Bass)	T
Shepherds, Lawton (Bass)	T	Horseshoe, Salford 7 (B, 4X)	T	Sun, Failsworth (4X)	T
Royal, Atherton (Bass)	T	Victoria, Altrincham (4X, Bass)	T	Moorside Hotel, Ripponden (TL)	T
Richmond, Liverpool 1 (Bass)	T	Wheatshaf, Oldham Rd, M/cr (4X)	T	Corporation, Ashton (B, TL)	M
Grosvenor, Blackpool (B, 4X, Bass)	M	Burton Arms, Swan St (M/cr) (4X, Bass)	T	Windmill, Denton (Bass)	M
Little Vic, Blackpool (Bass)	M	Nags Head, Ballington (Bass)	T	Angel, Denton (Bass)	M
Number 3, Blackpool (B, 4X, Bass)	M	Town Hall, Manchester (Bass)	T	Cottage, Denton (B, TL)	T
Rabbit Inn, Southport (B, 4X, Bass)	M	Lord Howard, Rochdale (B)	M	Jolly Hatters, Denton (TL, Bass)	T
Old Toby, Ashurst (B, 4X, Bass)	M	Directors Arms, Castleton (4X)	T	Jolly Carter, Droylsden (4X)	T
Bay Horse, Farmby (4X, Bass)	M	Gale Inn, Castleton (4X)	T	Trafalgar, Ashton (TL)	T
Houghton Arms, Southport (Bass)	M	George & Dragon, Castleton (4X, Bass)	T	Mechanics, Audenshaw (TL)	T
Railway, Leyland (B, Bass)	T	Halfway House, Facit (4X)	T	Ring o Bells, Aston (TL)	T
Ship, Southport (B, 4X)	T	Gallows, Milnrow (B)	T	Corporation, Ashton (TL)	T
Masons Arms, Southport (B, 4X)	T	Huntsman, Littleborough (B, 4X)	T	Robin Hood, Ashton (TL)	T
Silver Birch, Birchwood (Bass)	F	New Inn, Dearnley (B, 4X)	T	Greyhound, Ashton (TL)	T
Bodega, Liverpool 4 (B)	F	Ox & Plough, Dearnley (B, 4X)	T	White Horse, Ashton (B)	T
Saddle, Liverpool (B, 4X, Bass)	M	Rawstrons, Whitworth (4X)	T	Butchers, Droylsden (4X)	T
Lord Seldon, Liverpool 7 (B, Bass)	M	Cock & Magpie, Whitworth (4X)	T	Cambridge, Ashton	T
Triton, Liverpool (B, Bass)	M	Railway, Littleborough (B, 4X, Bass)	T	Waggon & Horses, Ashton (TL)	T
Elm House, Liverpool 6 (B, 4X)	M	Reed, Rochdale (B, 4X, Bass)	T	Warrington Arms, Ashton (TL)	T
Grapes Hotel, Liverpool 6 (B, 4X)	M	Royal Oak, Littleborough (B, 4X)	T	Bowling Green, Ashton (TL)	T
York, Liverpool 6 (Bass)	M	Roys Arms, Spotland (B, 4X)	T	Pineapple, Ashton (TL)	T
Queens, Liverpool 2 (Bass)	M	Royal Exchange, Littleborough (B, 4X)	T	Oxford, Ashton (TL)	T
White Star, Rainford Gdns (B, Bass)	M	Summit, Littleborough (B, 4X)	T	Dugdale, Burnley (B, 4X)	M
Greenhills, Liverpool 18 (Bass)	M	Top House, Castleton (4X)	T	Lane Ends, Burnley (B, 4X)	M
The Courts, Leigh (Bass)	M	Waggon & Horses, Smallbridge (B, 4X)	T	Talbot, Burnley (B, Bass)	M
Woodcroft, Liverpool 15 (4X, Bass)	M	Whitbrook, Middleton (4X)	T	Prairie, Burnley (B)	M
Sefton Arms, Liverpool 15 (B, 4X)	M	Woolpack, Smallbridge (4X)	T	Black Bull, Burnley (B)	M
Railway, Wellington Rd (B, 4X)	M	Woolpack, Rochdale (4X, B, Bass)	T	New Albion, Burnley (B)	T
Cloughfold ConC, Rossendale (4X)	F	Bridge Inn, Norden (4X, Bass)	T	Bridge Inn, Burnley (B)	T
Red Lion, Howarth (B)	F	Bridge Inn, Rochdale (B, 4X)	T	Adelphi Hotel, Burnley (B)	T
Micklehurst Lib C, Mossley (TL)	F	Birches, Broadley (Bass)	T	Alma Inn, Burnley (B, 4X)	T
Cambridge WMC, Colne (B)	F	Burns Tavern, Bamford (B, 4X)	T	Bay Horse, Worsthorne (B)	T
Timperley CC (Bass)	F	Jolly Butcher, Bowlee (B, 4X)	T	Bridge Inn, Clowbridge (B, Bass)	T
Urmston Social Club (4X)	F	Gale Inn, Rochdale (B, 4X)	T	Cattlemarket, Burnley (B)	T
Sale CC (B)	F	Dyers Arms, Littleborough (B)	T	Coach & Horses, Burnley (B)	T
Oughtlington Park CC (Bass)	F	Gale Inn, Littleborough (B, 4X)	T	Coachmakers, Burnley (B)	T
Wharf Tavern, Stalybridge (B)	F	Grapes, Bamford (B, 4X)	T	Coal Clough, Burnley (B)	T
Cross Keys, Chapel Milton (B)	F	Harrow, Rochdale (TL, 4X)	T	Corporation, Burnley (B)	T
Cromptons Mule, Bolton (Bass)	F	Industry, Rochdale (B, 4X)	T	Deerplay, Bacup (B, 4X)	T
Nibblers, Horwich (B)	F	Lark Inn, Rochdale (B, 4X)	T	Fighting Cocks, Burnley (B)	T
Brinsop, Westhoughton, (B, 4X, Bass)	F	Railway, Rochdale (4X)	T	Fleece, Burnley (B)	T
Crumpsall Can Club (B)	F	Commercial, Castleton (4X)	T	Foresters, Burnley (B)	T
Last Hop, Hulme (B)	M	Fleece, Mossley (TL)	T	General Havelock, Burnley (B)	T
Dog, Chapel en le Frith (TL)	T	Grapes, Stalybridge (4X)	T	General Williams, Burnley (B)	T
Lloyds Arms, Chorlton on Medlock (B)	T	New Market, Dukinfield (TL)	T	Gordon Lennox Arms, Cliviger (B)	T
Old King, Stockport (B, 4X)	T	Prince of Wales, Milltown (4X)	T	Gretna Green Hotel (B)	T
Abbey Hey, Gorton (4X)	T	Bulls Head, Glossop (TL)	T	Mitre, Burnley (B)	T

Nelson, Burnley (B)	T Rams Head, Rawtenstall (B,4X)	T Grapes, Maentwrog (Bass)	F
Oxford, Burnley (B)	T Rose & Crown, Haslingden (B,4X)	T Halfway House, Prenton (B)	M
Queens, Burnley (B)	T Wellington, Bacup (B,4X)	T Willows, Upton (B,4X)	M
Reindeer, Burnley (B)	T Wellington, Britannia (B,4X)	T Town Crier, Chester (B,4X, Bass)	M
Stanley, Burnley (B,4X)	T Wellington, Gt Harwood (B,4X)	T Royal Oak, Hoole (B, Bass)	M
Turf, Burnley (B)	T Jolly Sailor, Waterfoot (B,4X)	T Woodlands, Whitby (B,4X)	M
Waterloo, Burnley (B)	T Fountain, Blackburn (4X, Bass)	T Ring o Bells, Christleton (4X, Bass)	T
Wheatheaf, Burnley (B)	T Dog, Blackburn (B,4X)	T Magazine, Wallasey (Bass)	T
Woodman, Burnley (B,4X)	T Market, Bacup (B,4X)	T Red House, Chester (Bass, 4X)	T
Woodtop, Burnley (B,4X)	T Greyhound, Bolton (4X)	T Spital Vaults, Chester (B,4X)	T
Bowling Green, Burnley (B)	T Lord Clyde, Bolton (4X)	T Black Horse, Heswall (B,4X, Bass)	M
Wellington, Burnley (B)	T New Inn, Radcliffe (B, TL, 4X)	T Bee Hive, Hoole (B, 4X)	M
Empress Bar, Burnley (B)	T Oddfellows, Woolfold (B)	T Egerton, Chester (B, 4X)	M
Rose & Crown, Burnley (B)	T Golden Reece, Bury (TL)	T Ermine, Flookers Brook (B, 4X)	M
Harpers Inn, Fence (B)	M Victoria, New Brighton (Bass)	F Golden Eagle, Chester (Bass)	M
Derby, Nelson (B,4X)	M McCullochs, Wallasey (Bass)	F Royal Oak, Chester (Bass)	M
Greyhound, Brierfield (B)	M Mostyn House School, Wirral (Bass)	F Raven, Farndon, Chester (B)	T
Jolly Hatters, Colne (B,4X)	M Foresters, Kelsall (B, 4X, Bass)	F Beeston Castle Chas (B, 4X)	T
Duke of York, Burnley (B,4X)	T Chester Can Club (Bass)	F Royal Oak, Kelsall (B, 4X)	T
General Gordon, Nelson (B)	T Blossoms, Chester (B)	F Blossoms, Birkenhead (B)	T
Crown, Colne (4X, NB)	T Red Lion, Old Hall St. (Bass)	F Glynne Arms, Hawarden (Bass)	M
Commercial, Colne (B,4X)	T County Offices, Chester (Bass)	F Acton Park, Wrexham (B)	M
Bay Horse, Nelson (B)	T Letters Inn, Tattenhall (B)	F Crown Bard, Wrexham (MB, XI)	M
Commercial, Burnley (B)	T Post House, Chester (Bass)	N Golden Lion, Wrexham (4X, Bass)	M
Craven Heifer, Burnley (B)	T Red Lion, Wrexham (Bass)	F Moreton Inn, Ruabon (B)	M
Derby, Colne (B,4X)	T Rising Sun, Nannerch (Bass)	F Royal Oak, Bangor-on-Dee, (Bass)	M
Engineers, Nelson (B,4X)	T White Lion, Glanrafon (Bass, MB)	F Walnut Tree, Wrexham (4X)	M
Hole in Wall, Colne (B,4X)	T FC&ME Kemp Ltd, Clywd, (MB, XI)	F Anchor, Ruthin (Bass, MB)	T
Hole in Wall, Foulridge (B,4X)	T Miners Arms, Flintshire (Bass)	F Bryn Dinas Hotel, St Asaph (MB, XI)	T
Marsden Cross, Brierfield (B)	T Jenny Jones, Llangollen (Bass)	F Dee Inn, Flint (B)	T
New Inn, Nelson (B,4X)	T Bagillt Arms, Clwyd (B, MB)	F Leeswood Inn, Mold (Bass)	T
Old Bridge, Nelson (B,4X)	T Sun Trevor, Llangollen (Bass)	F Loggerheads Inn, Llanferris (B)	T
Old Duke, Burnley (B)	T County Club, Prestatyn (MB, XI)	F New Inn, Rhuddall (MB, XI)	T
Pendle Inn, Burnley (B)	T Pendyffryn Soc C, Prestatyn (XI)	F Railway Hotel, Denbigh (Bass)	T
Railway, Nelson (B)	T Prestatyn Soc Club (XI)	F Caley Arms, Rhos on Sea (MB, XI)	M
Rock, Trawden (B,4X)	T Royal Naval Assoc, Rhyl (MB, XI)	F Central Hotel, Colwyn Bay (Bass, MB)	M
Victoria, Barrowford, (4X, B)	T RAFA Club, Rhyl (MB)	F Glyn y Weddw Arms, Llanbed (Bass)	M
Waggoners, Burnley (B)	T Con Club, Rhyl (MB, XI)	F St Tudno Hotel, Llandudno (Bass, MB)	M
White Bear, Barrowford (B)	T White Horse, Rhyl (Bass)	F Ship, Rhos on Sea (MB, XI)	M
White Walls, Colne (B,4X)	T Holland Arms, Colwyn Bay (Bass)	F Ship, Old Colwyn (MB, XI)	M
Sparrow Hawk, Burnley (B,4X, Bass)	T Waterloo, Gwynedd (Bass)	F Castle, Caernarvon (Bass, MB)	M
North Valley, Colne (B)	T RAFA Club Llandudno (XI)	F Liverpool Arms, Conway (Bass)	M
Kings Head, Colne (B,4X)	T Con Club, Llandudno (Bass, MB)	F Castle, Abergelle (MB)	T
Borough Arms, Blackburn (4X, Bass)	M Gwydr Hotel, Betws-y-Caed (Bass)	F Albion, Llanwrst (B, MB)	T
Queens, Rawtenstall (B,4X)	M Brit Legion, Colwyn Bay (MB)	F Alexandra, Caernarvon (Bass, MB)	T
White Horse, Padiham (B,4X)	M Colwyn Golf Club (MB)	F Australia Inn, Portmadoc (Bass)	T
Pickups Arms, Accrington (4X)	T Victoria, Llanwrst (B)	F Castle, Pwllheli (Bass)	T
Roebuck, Haslingden (B,4X)	T Stag, Abergelle (Bass)	F Llanfair Arms, Llanfairfechan (Bass)	T
Boars Head, Newchurch (B,4X)	T Castle, Conway (Bass)	N Marine, Old Colwyn (Bass, MB, XI)	T
Stag Inn, Church (B,4X)	T Castle, Bangor (Bass)	F Pen y Bryn, Llanwrst (B, MB)	T
Alma, Padiham (B,4X)	T Con Club, Caernarvon (Bass)	F Ship, Penmaenbach (Bass, MB)	T
Ashworth, Cloughfold (B,4X)	T Black Bay, Caernarvon (Bass)	F Snowdon Hotel, Llandudno (Bass)	T
Ashworth, Rawtenstall (B,4X)	T Con Club, Bangor (Bass)	F Valentine Inn, Abergelle (Bass, MB)	T
Bridge Inn, Church (B,4X)	T Douglas, Bethesda (MB, XI)	F Windsor Vaults, Clwyd (Bass, MB)	T
Bridge Inn, Ewood Bridge (B,4X)	T Bulls Head, Beaumaris (Bass)	F Griffin, Penrhynau deudreath (Bass, MB)	T
Britannia, Padiham (B)	T Vigour Inn, Anglesey (Bass)	F Liverpool Arms, Rhyl (Bass, MB, XI)	T
Broadway, Accrington (B,4X)	T Crosville Soc Club, Caernarvon (Bass)	F Aber Stores, Llanfairfechan (Bass)	T
Commercial, Bacup (B,4X)	T Victoria, Anglesey (Bass)	F Mount View, Machdre (Bass)	T
Commercial, Water (B,4X)	T Alexandra, Gwynedd (Bass, MB)	F Higgs, Liverpool (Bass)	T
Free Gardeners Arms, Padiham (B,4X)	T White Lion, Bangor (XI)	F Hole in Wall, Liverpool (Bass)	T
George & Dragon, Bacup (B,4X)	T Prince of Wales Llanberis (Bass)	F Dee Hotel, West Kirby (Bass)	T
Imperial, Accrington (B,4X)	T Parciay Arms, Marianglas (Bass)	F Park Hotel, Wigan (Bass)	T
Irwell, Bacup (B,4X)	T Harp, Bangor (4X, Bass, MB)	F Bowling Green Hotel, Wigan (Bass)	T
New Masons, Crawshawbooth (B,4X)	T Bron Trefor Arms, Talsarnau (MB, XI)	F Lanchester Tav. Roebuck Inn (Bass)	T
Masons, Waterfoot (B,4X)	T Brandon Arms, Llanfrothen (MB, XI)	F Lanchester Tav. Egerton Arms (Bass)	T
New Inn, Cheesden (B,4X)	T Refreshment Rooms, Portmadoc (MB)	F Royal Oak, Charlton-c-Hardy (Bass)	T
Jester, Crawshawbooth (B,4X)	T Oakley Arms, Merioneth (B)	F Seven Oaks, Manchester (Bass)	T
Plane Tree, Edenfield (B,4X)	T Goat Inn, Llanwrda (Bass)	F Slip Inn, Lancaster (Bass)	T

THE ROVERS RETURN AT THE TURN OF THE CENTURY

The Rovers Return, which stood at the bottom of Shudehill, is believed by many authorities to have been one of Manchester's oldest pubs; yet there is no mention of it in either the early recognizances or the first directories. The old building, with half-timbered gable, is thought to have been an outhouse of the home of the Hulme family - Withingreave Hall, which was in existence by the early 17th century. The Hall was occupied as a dwellinghouse until 1763, when the entire property was sold (Whitworth's Manchester Magazine, September 1763).



SHUDEHILL PUBS IN 1848 - THE ROVERS RETURN IS THE ODD-SHAPED BUILDING NEXT DOOR BUT ONE TO THE MOSLEY ARMS

If the origins of the Rovers Return date from this time, some explanation of the pub's omission from early records is required. A possible clue lies in the name of a pub which was demolished only recently to make way for the Arndale Centre - the Lower Ship. Where was the Upper Ship or Higher Ship? Could this have been the former name of the Rovers? In the 1863 street directory the address of the Higher Ship is given as 8 Shudehill and it would seem reasonable to assume that the pub's name changed from the Higher Ship or Old Ship, which did appear in the first directory, to the Rovers Return - a change which would involve little change to the signboard.

On closer examination, however, it becomes clear that the two pubs - the Higher Ship and the Rovers Return were separate buildings. The photograph of the Rovers Return shows clearly that the pub was at No. 12 Shudehill. The shape of the Rovers Return can be readily identified on the 1848 Ordnance Survey map on which all the public houses are shown. Whilst the Higher Ship (No. 8) and the Mosley Arms (No. 16) are clearly marked, there is no indication that No. 12 is a public house. The possibility springs to mind that the Rovers opened as a pub when the Higher Ship was demolished to make way for a warehouse in the 1860s, particularly as the Rovers appears in the 1872 licensing records whilst the Higher Ship does not.

However, a closer study of the 1863 street directory reveals that No. 12

YE OLDE ROVER'S RETURN,

Oldest Beer & Wine House in Great Britain,

12, Shudehill, Manchester.

A.D. 1308.

Proprietor, WILLIAM PEARSON.

*As a bird is known by its note,
So is a man by his conversation.*

Beer and Wines of the Finest Quality.

FREE FROM BREWER.

TABLE.

2 PINTS	..	make	..	1 QUART
4 QUARTS	..	"	..	1 GALLON
2 GALLONS	..	"	..	1 ARGUMENT
1 ARGUMENT	..	"	..	1 FIGHT
1 FIGHT	..	"	..	2 POLICEMEN
1 MAGISTRATE	} 20/- or 14 Days.
2 POLICEMEN	
1 MAGISTRATE'S CLERK	



The Old House where the men who built the "Seven Stars" obtained their Refreshments.

Shudehill was a beerhouse tenanted by Elizabeth Lomas. Far from being "Ye Olde Rovers Return" dating back to the time of Elizabeth and vying with the Seven Stars as the city's oldest pub, the Rovers was merely a beerhouse which could trace its origins back only to the Beerhouse Act of 1830.

R.H.



Sir - With regard to the recent "Pissing in the Hat" correspondence in WD and its traditional origins. I would like to contradict last month's worthy article and suggest that Pissing in the Hat, or Bowler Hat to be exact, dates from around 11.45pm on November 28th 1981, when a none-too-sober group of Snoot Magna members were returning from the Bury Beer Festival. In accordance with tradition the organiser (Humphy Dumpty), who had thoughtfully "borrowed" the Derby Hall's bowler hat, was misheard by the other worthies on the coach, who duly obliged by pissing into the hat, instead of passing the hat round. The bowler took three months to dry out and has now been returned to its rightful owners.

Yours, Tattlecopse

Subscriptions

If you want to be sure of getting What's Doing every month, why not subscribe? It costs £1.60 for six issues, postage paid. Fill in the form below and send it together with a cheque or postal order made out to "What's Doing" to Roger Hall, 123 Hill Lane, Blackley, Manchester

NAME.....

ADDRESS.....

Please send me the next six issues starting with the issue (state month)

Back Numbers

These are available from the above address at 10p a copy. Please send a large s.a.e.

What's Doing COPY DATE for May is Thursday 22 April

What's Doing is edited by Neil Richardson, 375 Chorley Road, Swinton, Manchester M27 2AY, 061 793 5329

JOIN CAMRA

To join CAMRA send £7.00 to: Membership, CAMRA, 34 Alma Road, St Albans, Herts AL1 3EW



I've no earthly wish to appear hostile or critical but have you seen the calibre of the applicants in this year's creeping self-deification stakes? I only wish that I had more time myself to devote to the running of the Campaign, but I'm afraid I've got enough on my plate. Since I was appointed Regional Organiser of the Boringsod's Embroidery League and became a women's darts referee I've had no time to call my own. Last week I was adopted as their mascot by Slumley Gay Dock and I've partially completed an application form for the post of Director of Amnesia International. I was stymied by question 15:- "Do you have nodules?" I've not yet thought of a suitable answer.

But back to our bunch of aspirant boss persons. There's only one bright spot - Mr Trifledan seems to have given up but the rest of them are all there. Apart from intellectual giant Peter Podge, there seems to be a distinct lack of grey matter, judging by the drivel they've dreamed up in their statements. The longest statements are quite rightly made by the most boring candidates, Nellie Tweed and Mr Whitter.

Mr Zimbabwe-Talbot's piece has the merits of brevity but he claims great allegiance to International D.O.G.S.H.I.T., when in fact he's bored to the molars and wisdoms with Mr Hammerstein's ongoing Circus. He also makes out that he's into lots of other wonderful activities whilst in fact he spends all his time name changing and kowtowing to bucolic smarmies. Perhaps Islam Deafwater will be successful this year and be allowed to put his trite self-evident truisms into effect.

Tom Duckfoot omits to mention his prime asset as a potential member of the NE. It is not a widely known fact that Tom is a qualified medical person, being involved in the attempted curing of barmy persons - a talent which come in very handy.

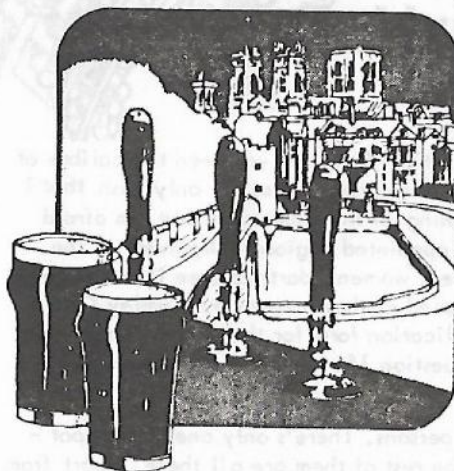
It's noticeable that there are absolutely no candidates from Grotley. The late Boddington's underclaw was the only person to make the boss group from this neck of the woods, and he was a Grotlonian by adoption rather than birthright. Perhaps if Dermatitis got out of his cupboard and Biffo and Bazza forgot their menage à trois we might make some progress. Tish, Fiona, Bunty, Ophelia Hampton and Alistair, Ben Chestnut, Mole Whalebody, Betty Bass and others must seriously reconsider their unwillingness to serve the Campaign - they could spread afar the joy of consuming amber nectar from Drabs and Boringsods and revitalise what's become a surrogate career for failed south persons.

The Third National Pub Preservation Conference

York 1982



**A national forum for
all those concerned
about the future of
Britain's Pubs.**



THE BRITISH PUB AN ENDANGERED SPECIES?

**A two day conference
to be held at the**

**University of York
4-5 April 1982**



**Pub
Preservation
Group**

Britain's pubs are dying off at an estimated rate of five a week. The survivors live under constant threat of indiscriminate change, making the erosion of our national stock of public houses far more than just a question of reduced numbers. Our country is littered with the gutted, ruined interiors of pubs, sacrificed to the gods of quick profits or change-for-change's-sake. Hundreds of our best pubs - cherished locals and irreplaceable historic gems alike - have been the casualties of careless change. The safeguards that exist are inconsistently applied, and the fragmented world of pub operation remains one where the best of our pubs are no less at risk than the worst from threats of extinction, neglect or harmful alteration.

Are these threats irresistible? Is there any hope for greater understanding of the value of our pubs from breweries, licensees, public officials and the community at large? Can Britain sustain a healthy and balanced stock of public houses to suit the varied needs of different communities? Can country pubs survive the Recession, or urban pubs the assaults of redevelopment schemes? How many pubs, and which pubs, should be encouraged to remain? Do any have a long-term future in the face of unfair competition from clubs and supermarkets? Is there any will to conserve the essential character of the British Pub as a unique and precious national institution? And what can be done to command recognition for our truly historic pubs and ensure their preservation and proper care?

This national conference, the third of its kind and the first to be held in the North of England, expects to discover no easy answers. It aims rather to build on the successes of the 1980 and 1981 Oxford conferences by offering a rare opportunity for all those concerned for the future of Britain's pubs - brewery executives and architects, publicans, magistrates, town planners and ordinary drinkers among them - to meet on equal terms, to hear the views of others, and to share their knowledge and perceptions.

FURTHER INFORMATION

Postal enquiries should be addressed to:
Tina David (Conference Secretary)
22 Prospect Terrace, Fulford, York YO1 4PT
Telephone enquiries should be directed to:
CAMRA Head Office - St. Albans (0727) 67201



Branch Diary

NORTH MANCHESTER

Weds 5th May Pub crawl of Pendlebury. 7.00 Golden Lion (Duttons bitter), Lord Nelson 8.00
Weds 12 May Social/Committee meeting, Union, Liverpool Street, Salford 8.00
Weds 19 May Branch Meeting, White Swan, Swinton
Contact Roger Hall, 740 7937

TRAFFORD & HULME

Thurs 15 April 8pm Branch Meeting, Church, 84 Cambridge Street, Hulme
Thurs 22 April 8pm, Pub of the Month, Melville, Barton Road, Stretford
Thurs 29 April Coach trip for Ormskirk pub crawl
Thurs 6 May 7.30pm Committee/Social, Crown, Deansgate
Thurs 20 May 8pm, Branch Meeting, Malt Shovels, Altrincham
Contact Mick Rottenbury 969 7013 (h)

BOLTON

Wed 14 April Dog & Partridge (Thwaites) Manor Street, Bolton 8.30pm
Fri 23 April Crawl of Manchester centre. Dome Bar, Victoria Station 7.00, Burton Arms, Swan St 8.00pm
Fri 30 April Crawl of Halliwell Road. Ainsworth Arms 7.30pm
Contact James Hurst Tottington 3532

ROCHDALE, OLDHAM & BURY

Tues 13 April Branch Meeting, Cotton Tree (Lees), Baarshaw Rd, Middleton 8.00
Tues 20 April Committee/Social, Dog & Partridge (OB), Middleton 8.00
Wed 28 April - Sun 1st May Saddleworth Beer Festival
Tues 11 May Branch Meeting, Welcome (Holts) Bury Old Road, Prestwich
Contact Steve Lawton 061 620 9239 (h) 061 236 4411 ext 7237 (w)

HIGH PEAK & NORTH EAST CHESHIRE

Weds 14 April Branch AGM, Jolly Sailor, Marple
Sat 24 April Coach Trip to York and Keighley. Information from Stuart Jamieson 061 427 2463
Contact Tom Lord 061 427 7099

SOUTH MANCHESTER

Thurs April 8, Branch AGM, Gateway, Wilmslow Road, 8.00
Thurs 22 April Pub of The Month - Melville, Stretford, with Trafford & Hulme

WHAT'S DOING ADVERTISING RATES

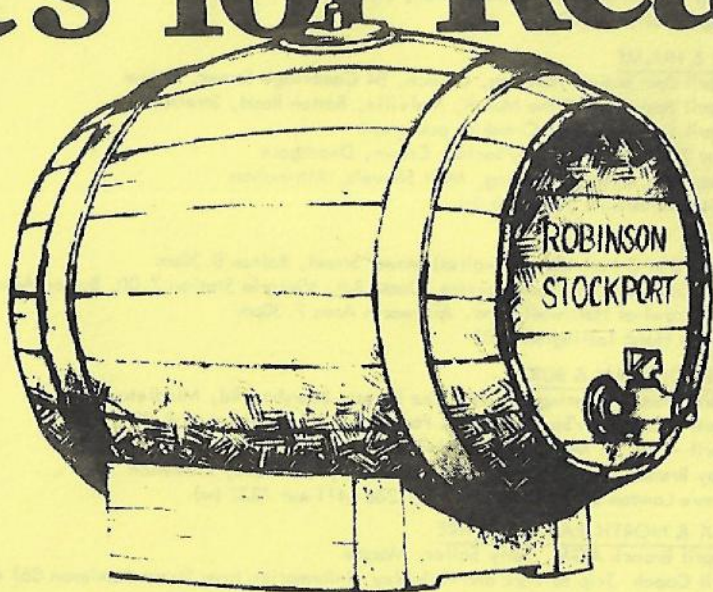
	1 MONTH	6 MONTHS
1/4 PAGE	£7.50	£6.00
1/2 PAGE	£15.00	£12.00
3/4 PAGE	£20.00	£16.00
1 PAGE	£25.00	£20.00

Please address all advertising queries to D G Eckett, 82 Beverley Road, Ladybarn,
Manchester M14 6TH

SUNDAY OPENING

The Castlewood, Bridge Street Brow, off Great Underbank, Stockport, is now open Sunday lunchtimes and is serving traditional 3-course Sunday lunches to go with the excellent Wilsons mild and bitter.

It's for Real



We at Robinson's think that what matters most about beer is its flavour. That's why we are still brewing beer the same way that we did a hundred years ago. Natural ingredients, the same time-honoured brewing ways, even on the same site - not many can say that!

And you can buy at least one, usually two and sometimes more of the traditional ales listed here in any Robinson's pub within 100 miles of Stockport. Not many can make that sort of claim either.

Now you can have Real Ale at home for parties or just for your own enjoyment. Available in Firkins and Pins*, complete with tap, stillage and detailed instructions. You can order from any Robinson's On or Off-Licence or Unicorn Wine Shops.

Old Tom Ale
Best Bitter Ale
Best Mild Ale



Always available from Unicorn Wine, Lower Hillgate, Stockport, (just by the Brewery) 061-480 6571. And it's the cheapest way of buying beer. A little more trouble perhaps but we think you will agree with us that it is worth it.

There are deposits on the casks, stillages and taps, returnable in full when you bring them back. You can borrow glasses, paying only for those you break or fail to return providing you also make appropriate purchases of items to fill them.

We strongly recommend that you place your order as soon as possible for Christmas or New Year use.

It's Robinson's . . . for Real.

**When you buy any of these Robinson's Ales,
you are buying Traditional Draught Beer
~at its very best.**